

Data Path : Z:\pestpcbsrv\HPCHEM1\ECD\_D\Data\PD071125\  
 Data File : PD089463.D  
 Signal(s) : Signal #1: ECD1A.ch Signal #2: ECD2B.ch  
 Acq On : 11 Jul 2025 15:17  
 Operator : AR\AJ  
 Sample : PSTDCCC050  
 Misc :  
 ALS Vial : 4 Sample Multiplier: 1

Instrument :  
 ECD\_D  
 ClientSampleId :

Integration File signal 1: autoint1.e  
 Integration File signal 2: autoint2.e  
 Quant Time: Jul 11 22:53:30 2025  
 Quant Method : Z:\pestpcbsrv\HPCHEM1\ECD\_D\Method\PD061825.M  
 Quant Title : GC Extractables  
 QLast Update : Wed Jun 18 05:39:05 2025  
 Response via : Initial Calibration  
 Integrator: ChemStation

Volume Inj. : 1 µl  
 Signal #1 Phase : ZB-MR2 Signal #2 Phase: ZB-MR2  
 Signal #1 Info : 30M x 0.32mm x0.5 Signal #2 Info : 30M x 0.32mm x 0.25µm

	Compound	RT#1	RT#2	Resp#1	Resp#2	ng/ml	ng/ml
-----							
System Monitoring Compounds							
1)	SA Tetrachlo...	3.550	2.881	148.0E6	939.8E6	51.862	55.436
28)	SA Decachlor...	9.071	8.070	178.9E6	861.4E6	45.558	43.570
Target Compounds							
2)	A alpha-BHC	3.999	3.392	304.2E6	1449.8E6	52.185	54.103
3)	MA gamma-BHC...	4.329	3.729	287.1E6	1301.9E6	51.438	52.587
4)	MA Heptachlor	4.928	4.081	272.7E6	1294.7E6	50.013	51.709
5)	MB Aldrin	5.270	4.367	269.0E6	1292.5E6	50.640	53.370
6)	B beta-BHC	4.515	4.024	109.1E6	562.4E6	49.426	52.332
7)	B delta-BHC	4.764	4.261	276.0E6	1328.3E6	53.774	53.401
8)	Heptachlo...	5.689	4.871	240.1E6	1232.7E6	49.768	56.291
9)	A Endosulfan I	6.073	5.245	218.4E6	1061.1E6	48.452	50.910
10)	B gamma-Chl...	5.945	5.124	233.3E6	1296.7E6	48.718	54.202
11)	B alpha-Chl...	6.026	5.188	233.8E6	1198.2E6	48.329	52.328
12)	B 4,4'-DDE	6.194	5.373	207.7E6	1185.1E6	47.617	51.714
13)	MA Dieldrin	6.346	5.511	232.6E6	1168.5E6	48.490	50.346
14)	MA Endrin	6.573	5.788	194.0E6	1153.1E6	47.029	53.106
15)	B Endosulfa...	6.785	6.078	194.8E6	1002.1E6	48.270	49.618
16)	A 4,4'-DDD	6.704	5.928	168.4E6	964.0E6	49.080	50.394
17)	MA 4,4'-DDT	7.019	6.181	171.4E6	954.0E6	45.259	47.042
18)	B Endrin al...	6.914	6.256	142.4E6	729.4E6	46.481	47.637
19)	B Endosulfa...	7.148	6.480	178.3E6	955.3E6	46.453	48.687
20)	A Methoxychlor	7.492	6.752	83792400	472.8E6	41.469	43.909
21)	B Endrin ke...	7.629	6.989	184.2E6	995.0E6	45.216	46.060
22)	Mirex	8.112	7.183	130.5E6	733.3E6	42.926	43.969
23)	Chlordane-1	0.000	3.900	0	439054	N.D.	0.471 #
24)	Chlordane-2	5.270f	4.505	269.0E6	41865720	1232.395	43.994 #
25)	Chlordane-3	5.945	5.124	233.3E6	1296.7E6	270.461	436.556 #
26)	Chlordane-4	6.026	5.188	233.8E6	1198.2E6	222.555	477.977 #
27)	Chlordane-5	0.000	6.078	0	1002.1E6	N.D.	885.521 #

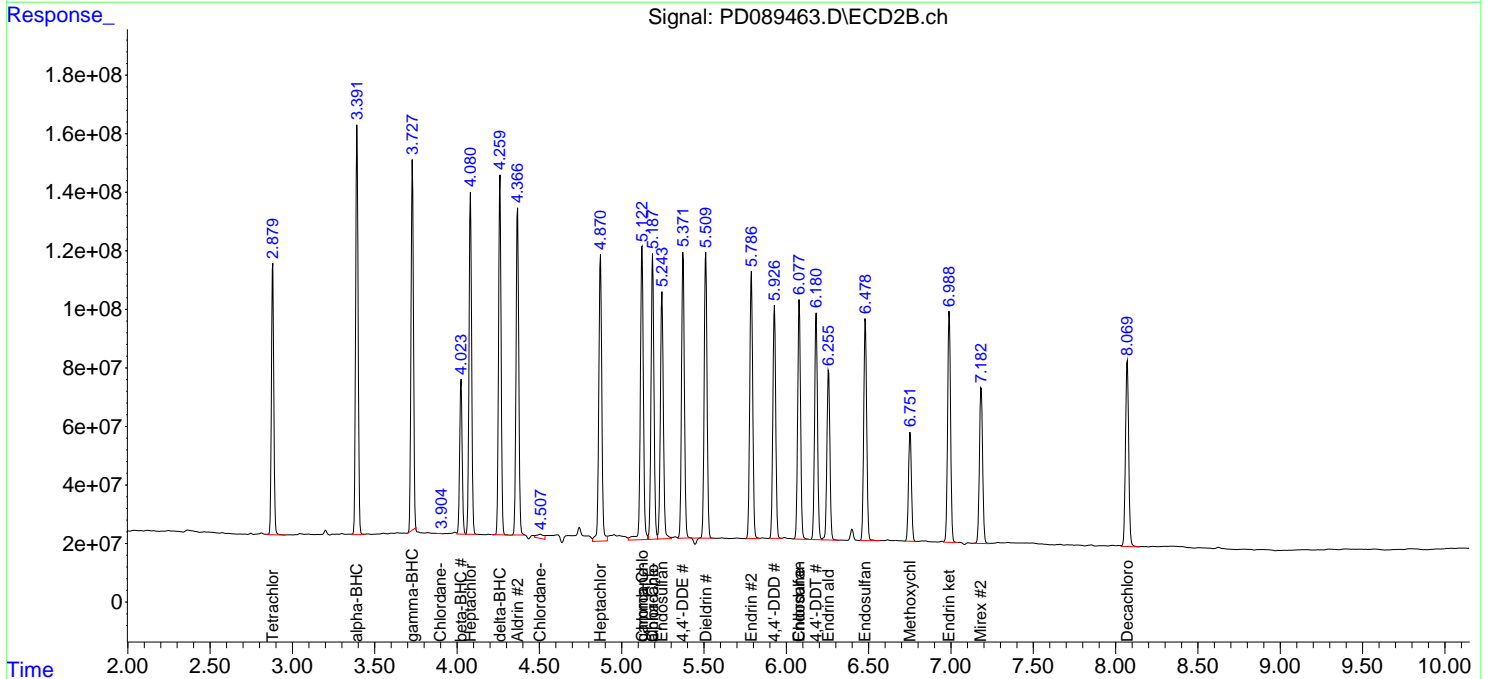
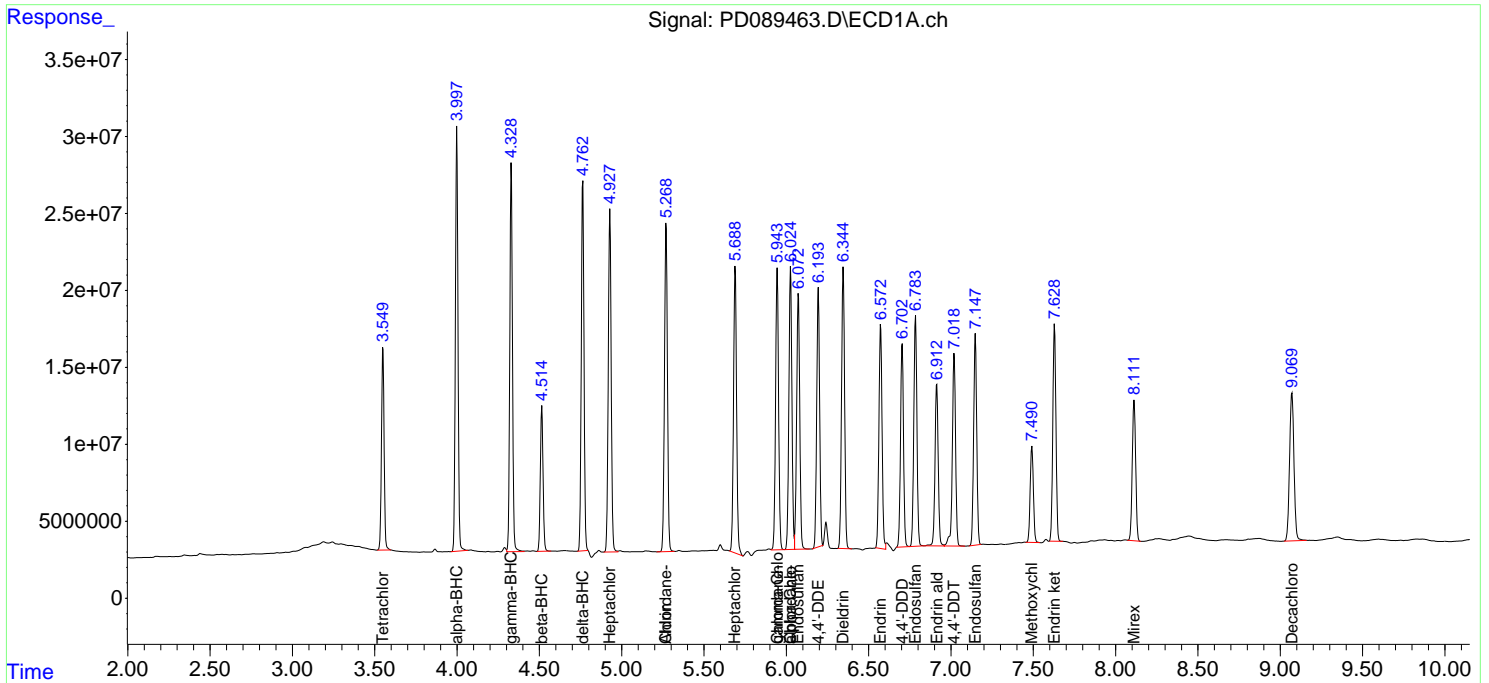
(f)=RT Delta > 1/2 Window (#)=Amounts differ by > 25% (m)=manual int.

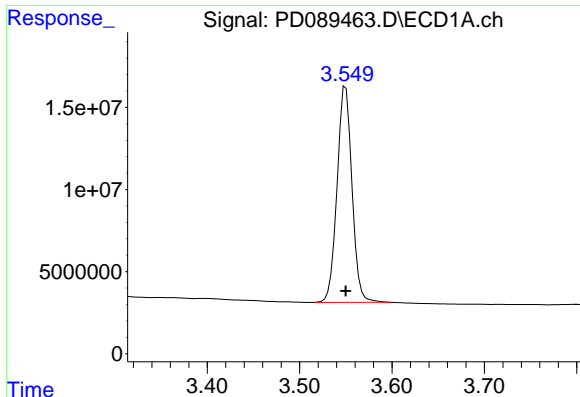
Data Path : Z:\pestpcbsrv\HPCHEM1\ECD\_D\Data\PD071125\  
 Data File : PD089463.D  
 Signal(s) : Signal #1: ECD1A.ch Signal #2: ECD2B.ch  
 Acq On : 11 Jul 2025 15:17  
 Operator : AR\AJ  
 Sample : PSTDCCC050  
 Misc :  
 ALS Vial : 4 Sample Multiplier: 1

Instrument :  
 ECD\_D  
 ClientSampleId :

Integration File signal 1: autoint1.e  
 Integration File signal 2: autoint2.e  
 Quant Time: Jul 11 22:53:30 2025  
 Quant Method : Z:\pestpcbsrv\HPCHEM1\ECD\_D\Method\PD061825.M  
 Quant Title : GC Extractables  
 QLast Update : Wed Jun 18 05:39:05 2025  
 Response via : Initial Calibration  
 Integrator: ChemStation

Volume Inj. : 1 µl  
 Signal #1 Phase : ZB-MR1 Signal #2 Phase: ZB-MR2  
 Signal #1 Info : 30M x 0.32mm x0.5 Signal #2 Info : 30M x 0.32mm x 0.25µm

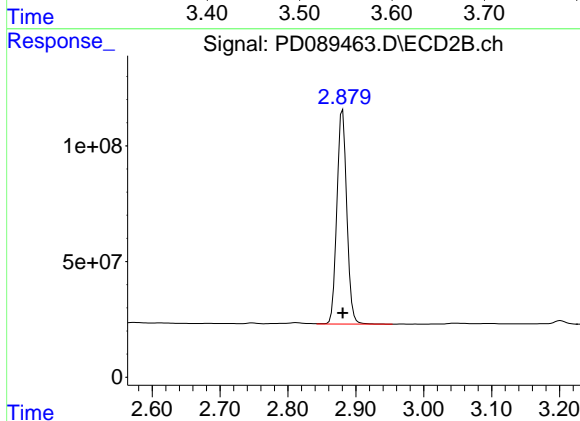




#1 Tetrachloro-m-xylene

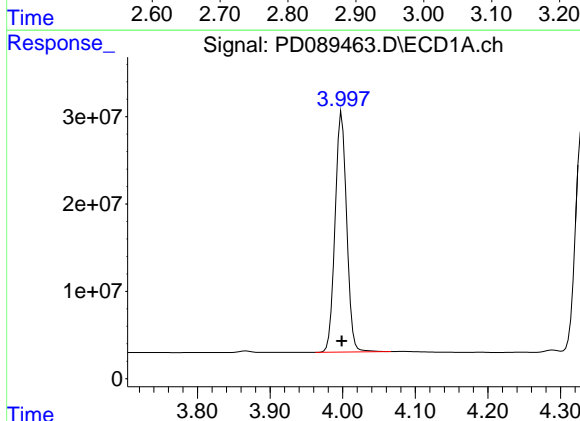
R.T.: 3.550 min  
 Delta R.T.: 0.000 min  
 Response: 147968170  
 Conc: 51.86 ng/ml

Instrument :  
 ECD\_D  
 ClientSampleId :



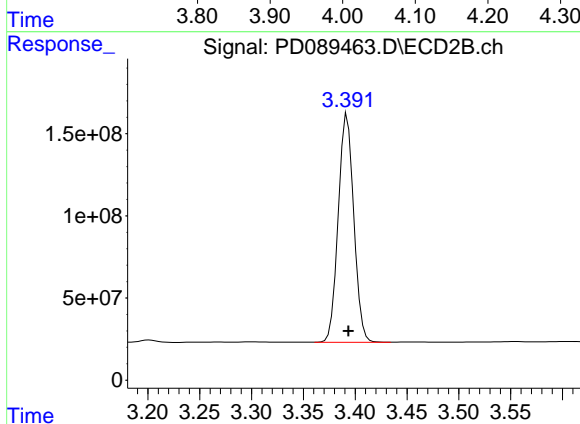
#1 Tetrachloro-m-xylene

R.T.: 2.881 min  
 Delta R.T.: 0.000 min  
 Response: 939816648  
 Conc: 55.44 ng/ml



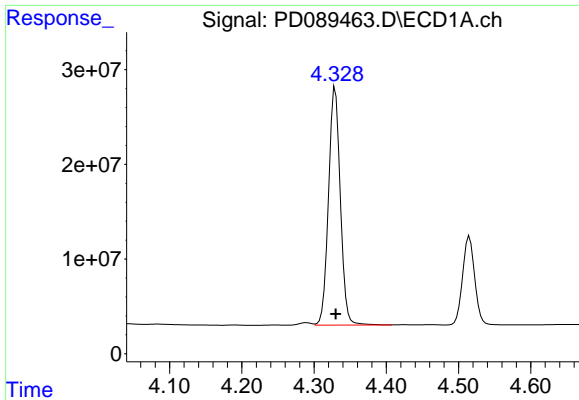
#2 alpha-BHC

R.T.: 3.999 min  
 Delta R.T.: 0.000 min  
 Response: 304192897  
 Conc: 52.19 ng/ml



#2 alpha-BHC

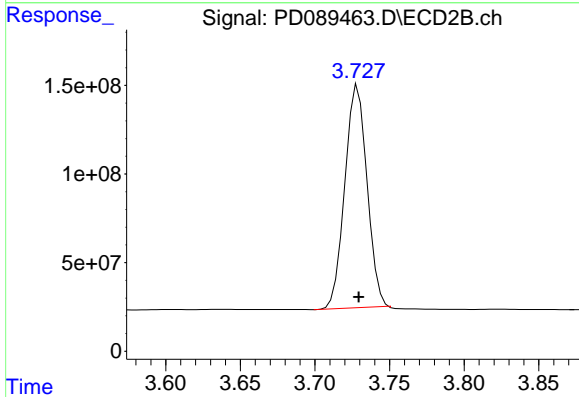
R.T.: 3.392 min  
 Delta R.T.: 0.000 min  
 Response: 1449791528  
 Conc: 54.10 ng/ml



#3 gamma-BHC (Lindane)

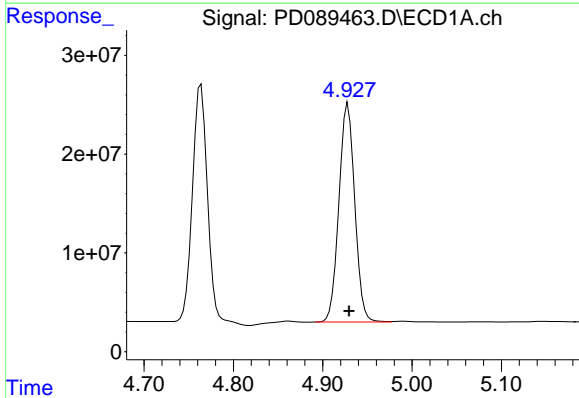
R.T.: 4.329 min  
 Delta R.T.: 0.000 min  
 Response: 287113227  
 Conc: 51.44 ng/ml

Instrument :  
 ECD\_D  
 ClientSampleId :



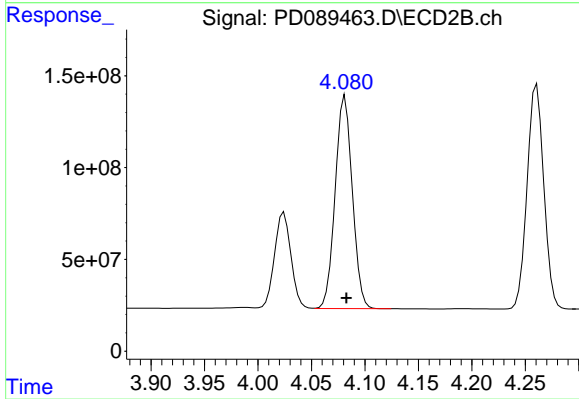
#3 gamma-BHC (Lindane)

R.T.: 3.729 min  
 Delta R.T.: 0.000 min  
 Response: 1301903750  
 Conc: 52.59 ng/ml



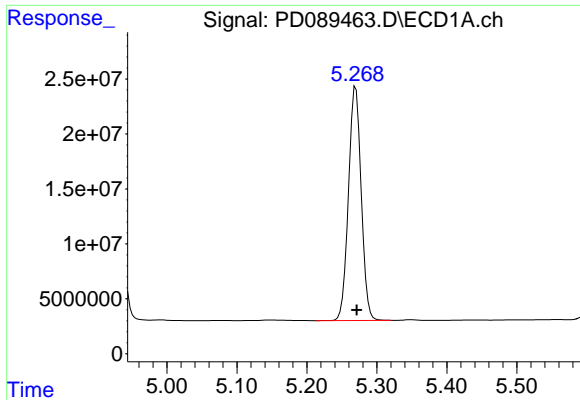
#4 Heptachlor

R.T.: 4.928 min  
 Delta R.T.: -0.001 min  
 Response: 272666654  
 Conc: 50.01 ng/ml



#4 Heptachlor

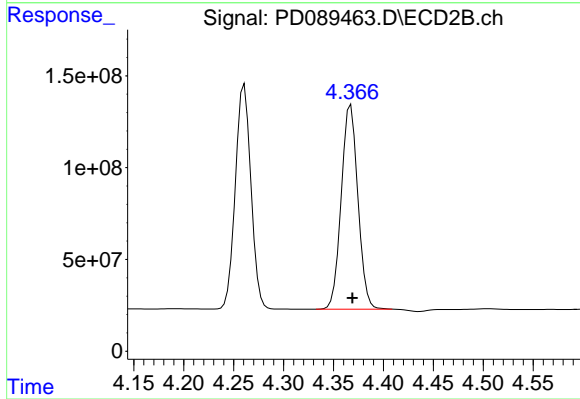
R.T.: 4.081 min  
 Delta R.T.: -0.001 min  
 Response: 1294702074  
 Conc: 51.71 ng/ml



#5 Aldrin

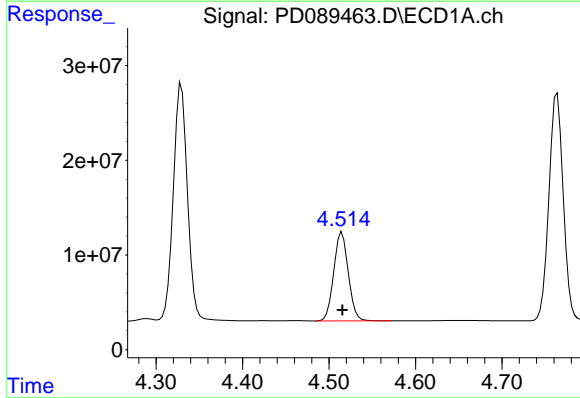
R.T.: 5.270 min  
 Delta R.T.: -0.001 min  
 Response: 269048768  
 Conc: 50.64 ng/ml

Instrument :  
 ECD\_D  
 ClientSampleId :



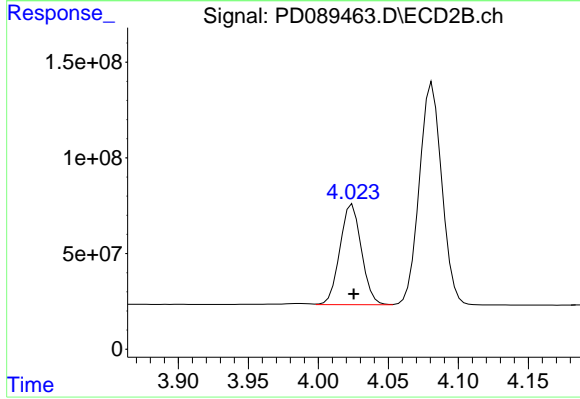
#5 Aldrin

R.T.: 4.367 min  
 Delta R.T.: -0.001 min  
 Response: 1292477412  
 Conc: 53.37 ng/ml



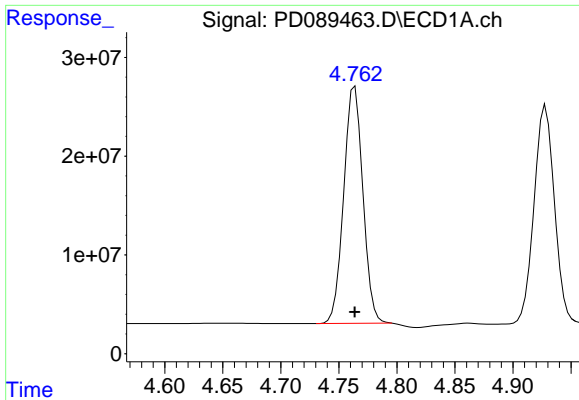
#6 beta-BHC

R.T.: 4.515 min  
 Delta R.T.: 0.000 min  
 Response: 109090634  
 Conc: 49.43 ng/ml



#6 beta-BHC

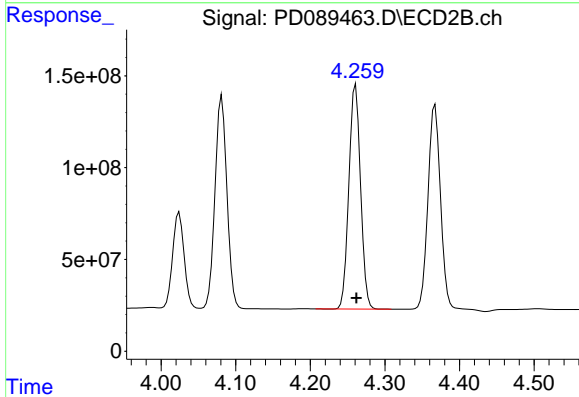
R.T.: 4.024 min  
 Delta R.T.: 0.000 min  
 Response: 562372417  
 Conc: 52.33 ng/ml



#7 delta-BHC

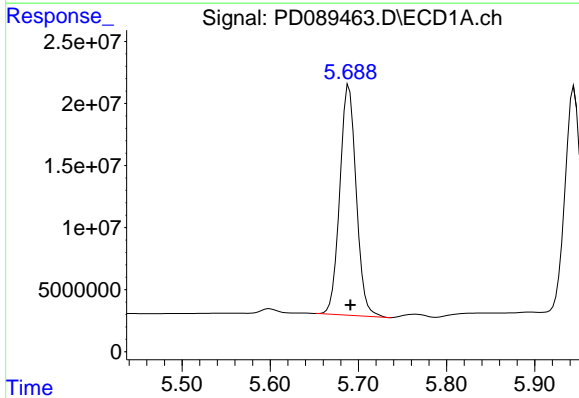
R.T.: 4.764 min  
 Delta R.T.: 0.000 min  
 Response: 276016019  
 Conc: 53.77 ng/ml

Instrument :  
 ECD\_D  
 ClientSampleId :



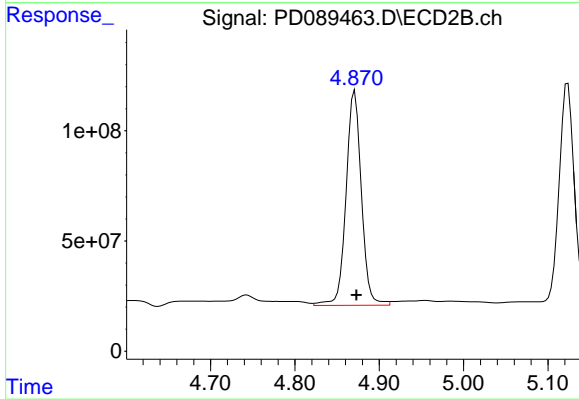
#7 delta-BHC

R.T.: 4.261 min  
 Delta R.T.: -0.001 min  
 Response: 1328265827  
 Conc: 53.40 ng/ml



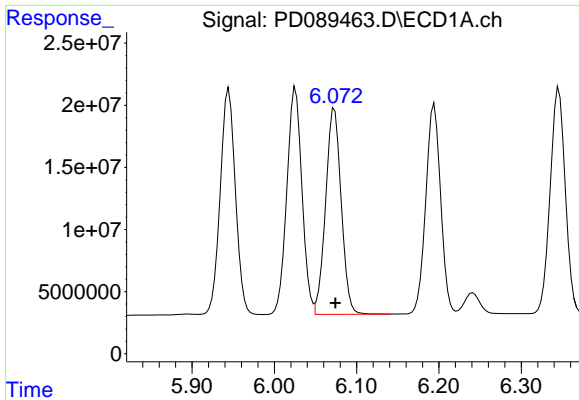
#8 Heptachlor epoxide

R.T.: 5.689 min  
 Delta R.T.: -0.001 min  
 Response: 240075429  
 Conc: 49.77 ng/ml



#8 Heptachlor epoxide

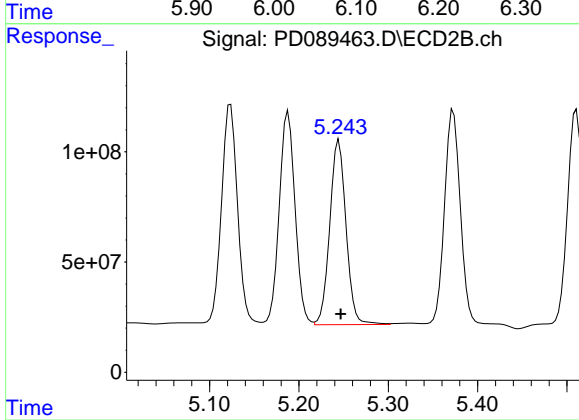
R.T.: 4.871 min  
 Delta R.T.: -0.002 min  
 Response: 1232654489  
 Conc: 56.29 ng/ml



#9 Endosulfan I

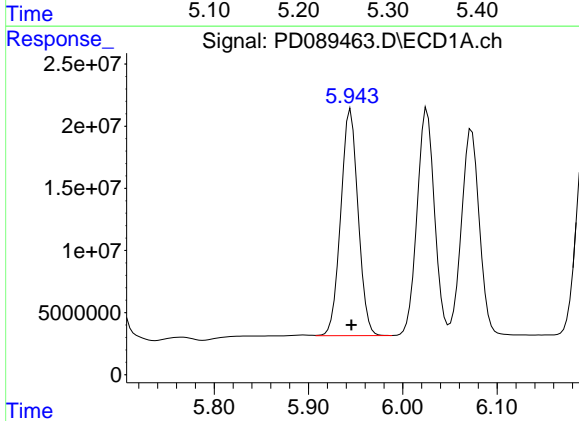
R.T.: 6.073 min  
 Delta R.T.: -0.001 min  
 Response: 218396827  
 Conc: 48.45 ng/ml

Instrument :  
 ECD\_D  
 ClientSampleId :



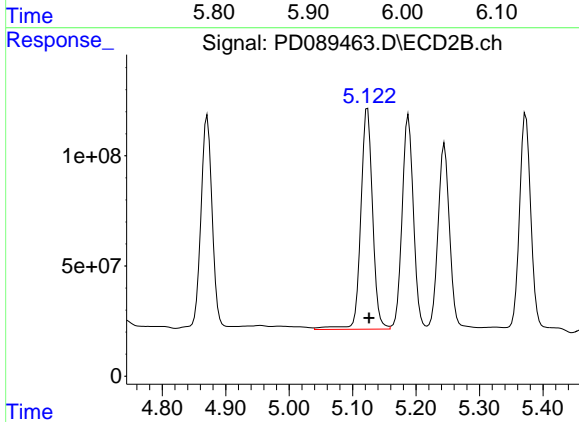
#9 Endosulfan I

R.T.: 5.245 min  
 Delta R.T.: -0.002 min  
 Response: 1061089304  
 Conc: 50.91 ng/ml



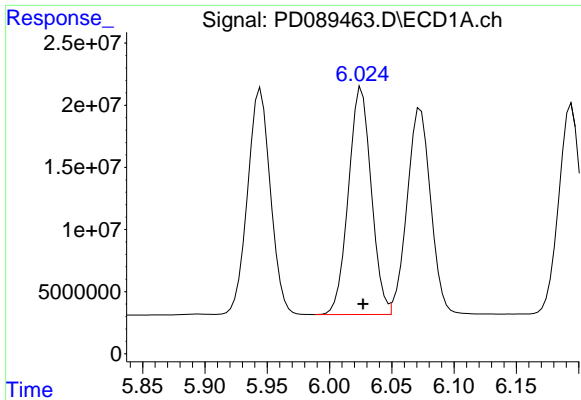
#10 gamma-Chlordane

R.T.: 5.945 min  
 Delta R.T.: 0.000 min  
 Response: 233267748  
 Conc: 48.72 ng/ml



#10 gamma-Chlordane

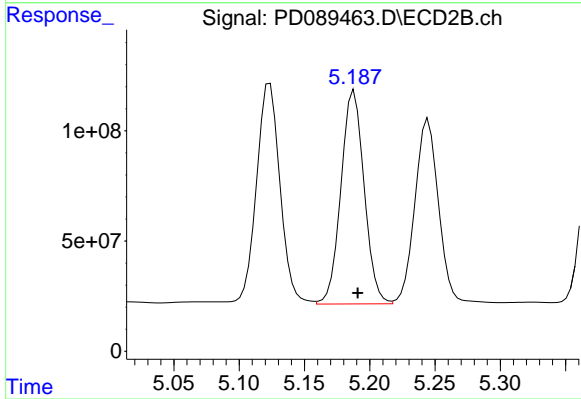
R.T.: 5.124 min  
 Delta R.T.: -0.002 min  
 Response: 1296658099  
 Conc: 54.20 ng/ml



#11 alpha-Chlordane

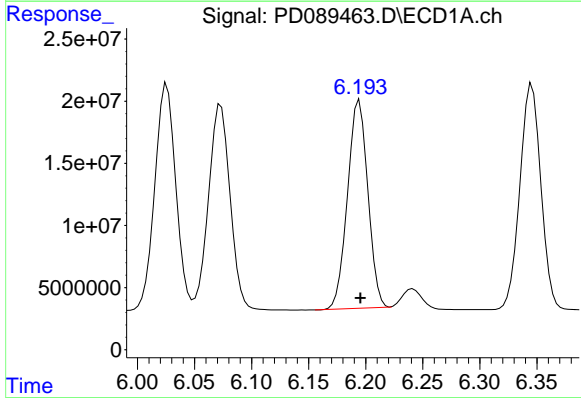
R.T.: 6.026 min  
 Delta R.T.: -0.001 min  
 Response: 233840521  
 Conc: 48.33 ng/ml

Instrument :  
 ECD\_D  
 ClientSampleId :



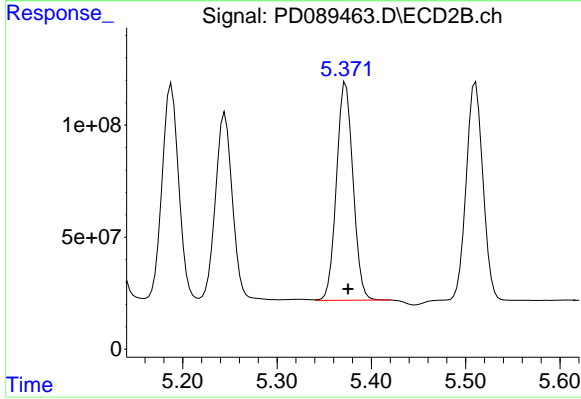
#11 alpha-Chlordane

R.T.: 5.188 min  
 Delta R.T.: -0.003 min  
 Response: 1198154633  
 Conc: 52.33 ng/ml



#12 4,4'-DDE

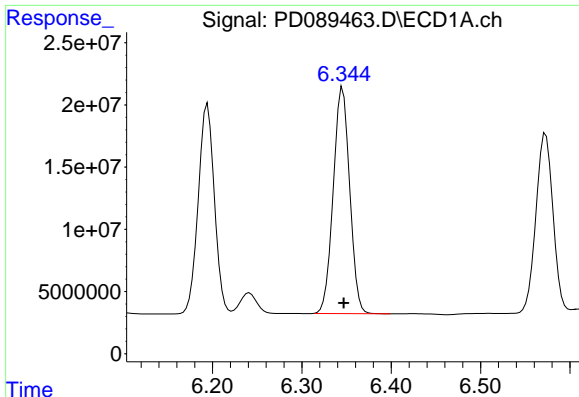
R.T.: 6.194 min  
 Delta R.T.: 0.000 min  
 Response: 207660980  
 Conc: 47.62 ng/ml



#12 4,4'-DDE

R.T.: 5.373 min  
 Delta R.T.: -0.002 min  
 Response: 1185083266  
 Conc: 51.71 ng/ml

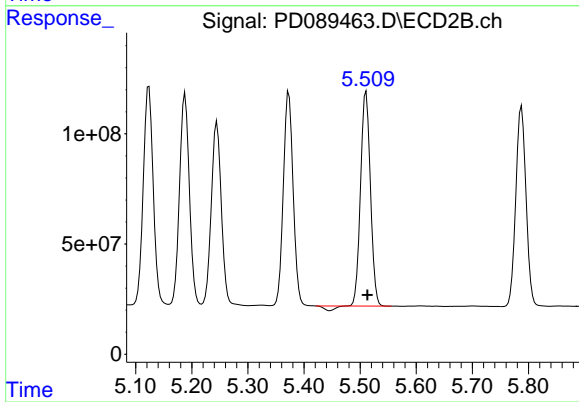




#13 Dieldrin

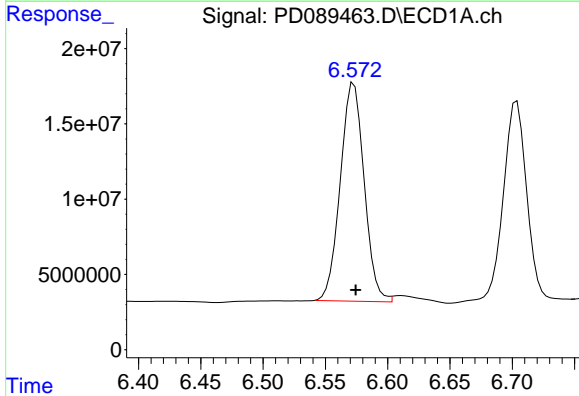
R.T.: 6.346 min  
 Delta R.T.: -0.001 min  
 Response: 232627483  
 Conc: 48.49 ng/ml

Instrument :  
 ECD\_D  
 ClientSampleId :



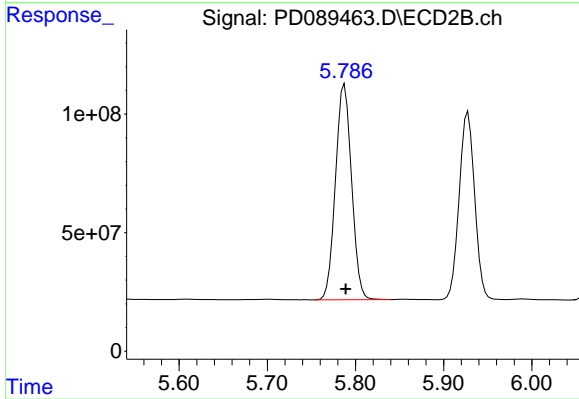
#13 Dieldrin

R.T.: 5.511 min  
 Delta R.T.: -0.002 min  
 Response: 1168456525  
 Conc: 50.35 ng/ml



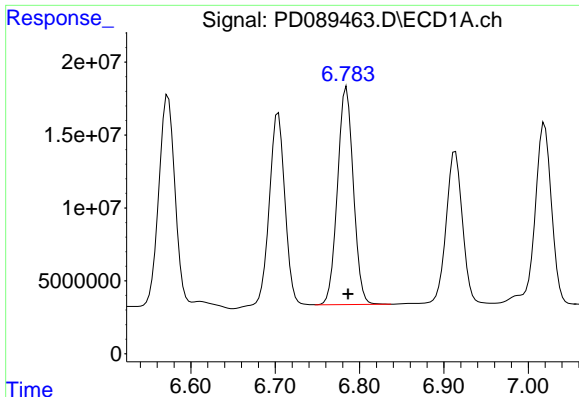
#14 Endrin

R.T.: 6.573 min  
 Delta R.T.: -0.001 min  
 Response: 194020952  
 Conc: 47.03 ng/ml



#14 Endrin

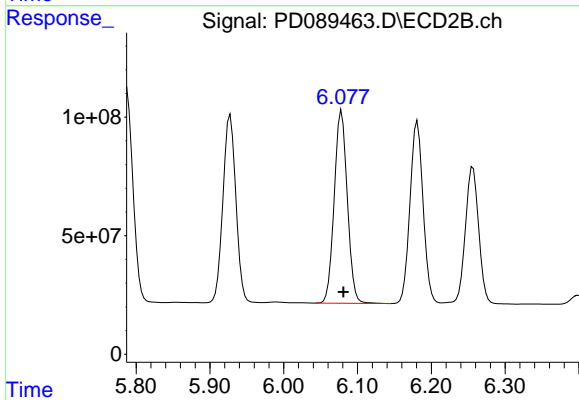
R.T.: 5.788 min  
 Delta R.T.: -0.001 min  
 Response: 1153144335  
 Conc: 53.11 ng/ml



#15 Endosulfan II

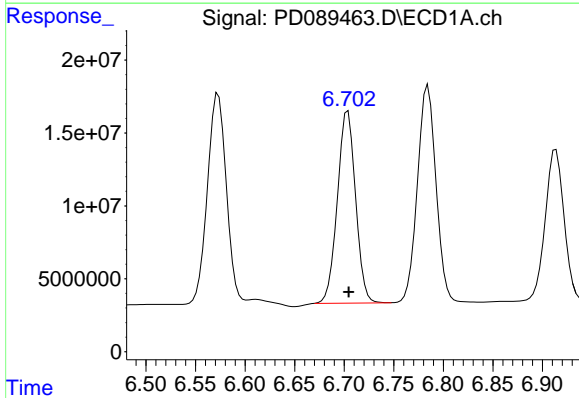
R.T.: 6.785 min  
 Delta R.T.: -0.002 min  
 Response: 194846598  
 Conc: 48.27 ng/ml

Instrument :  
 ECD\_D  
 ClientSampleId :



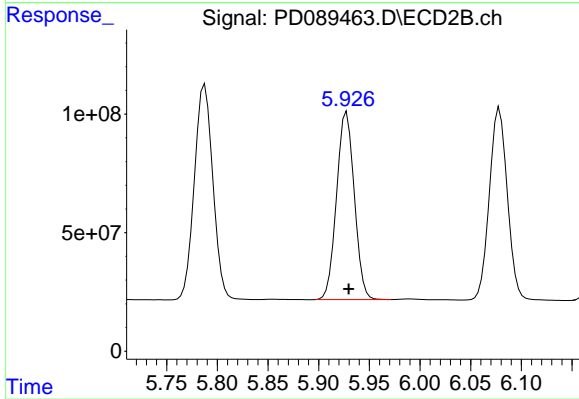
#15 Endosulfan II

R.T.: 6.078 min  
 Delta R.T.: -0.003 min  
 Response: 1002109512  
 Conc: 49.62 ng/ml



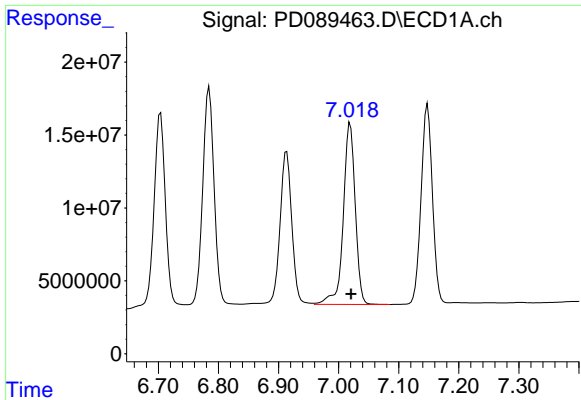
#16 4,4'-DDD

R.T.: 6.704 min  
 Delta R.T.: 0.000 min  
 Response: 168446420  
 Conc: 49.08 ng/ml



#16 4,4'-DDD

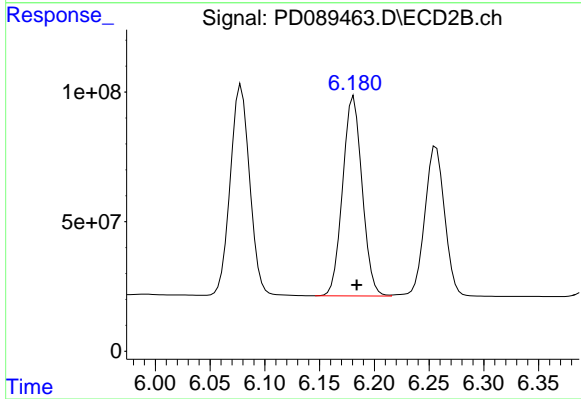
R.T.: 5.928 min  
 Delta R.T.: -0.002 min  
 Response: 964007925  
 Conc: 50.39 ng/ml



#17 4,4'-DDT

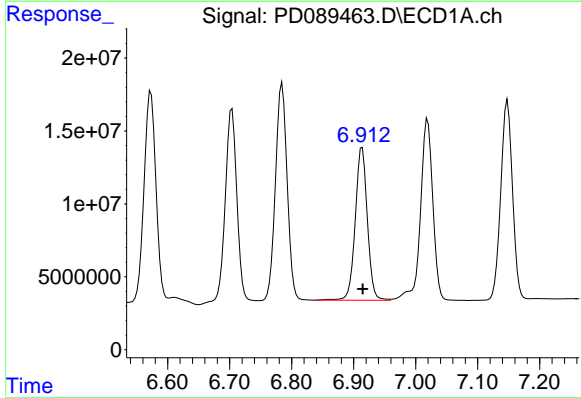
R.T.: 7.019 min  
 Delta R.T.: -0.001 min  
 Response: 171449544  
 Conc: 45.26 ng/ml

Instrument :  
 ECD\_D  
 ClientSampleId :



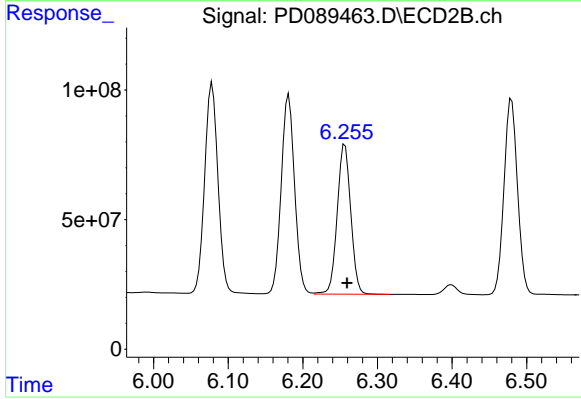
#17 4,4'-DDT

R.T.: 6.181 min  
 Delta R.T.: -0.003 min  
 Response: 953971563  
 Conc: 47.04 ng/ml



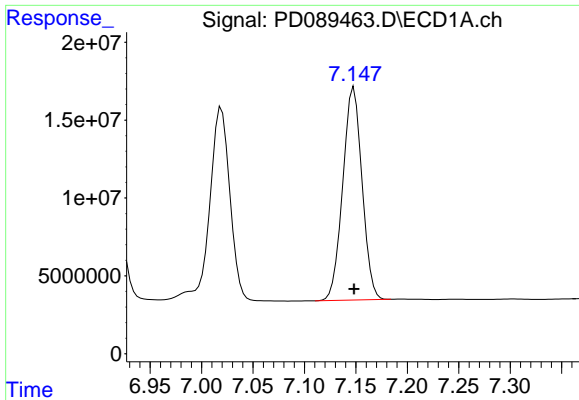
#18 Endrin aldehyde

R.T.: 6.914 min  
 Delta R.T.: -0.001 min  
 Response: 142415878  
 Conc: 46.48 ng/ml



#18 Endrin aldehyde

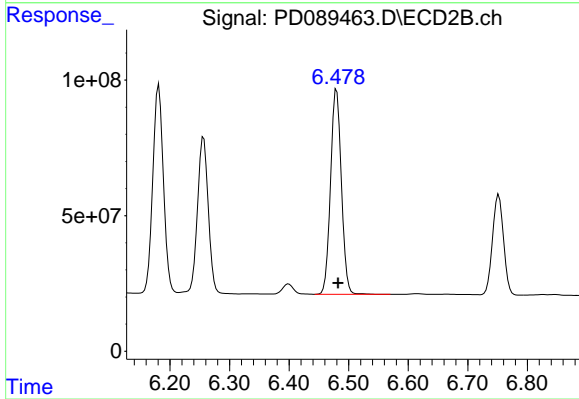
R.T.: 6.256 min  
 Delta R.T.: -0.003 min  
 Response: 729382715  
 Conc: 47.64 ng/ml



#19 Endosulfan Sulfate

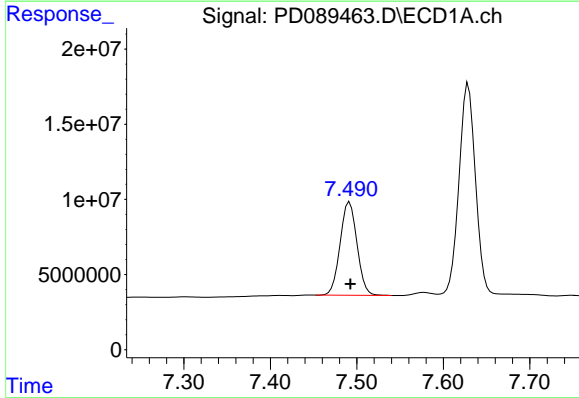
R.T.: 7.148 min  
Delta R.T.: 0.000 min  
Response: 178250109  
Conc: 46.45 ng/ml

Instrument :  
ECD\_D  
ClientSampleId :



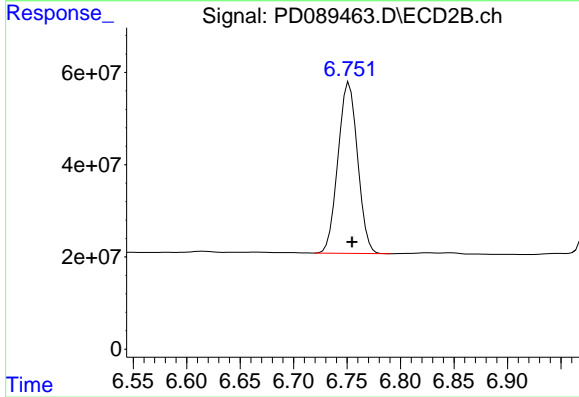
#19 Endosulfan Sulfate

R.T.: 6.480 min  
Delta R.T.: -0.003 min  
Response: 955294533  
Conc: 48.69 ng/ml



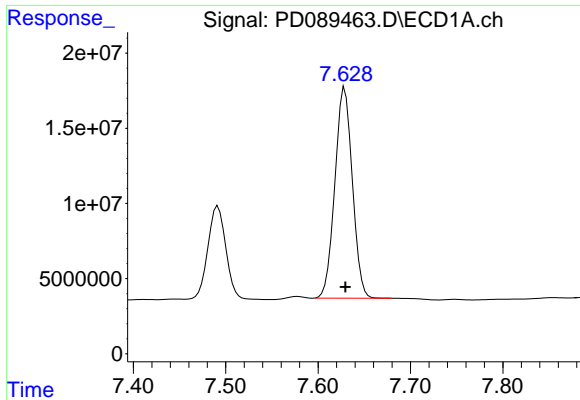
#20 Methoxychlor

R.T.: 7.492 min  
Delta R.T.: -0.001 min  
Response: 83792400  
Conc: 41.47 ng/ml



#20 Methoxychlor

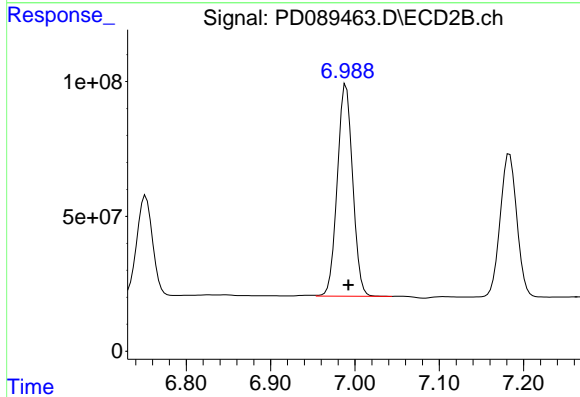
R.T.: 6.752 min  
Delta R.T.: -0.003 min  
Response: 472815496  
Conc: 43.91 ng/ml



#21 Endrin ketone

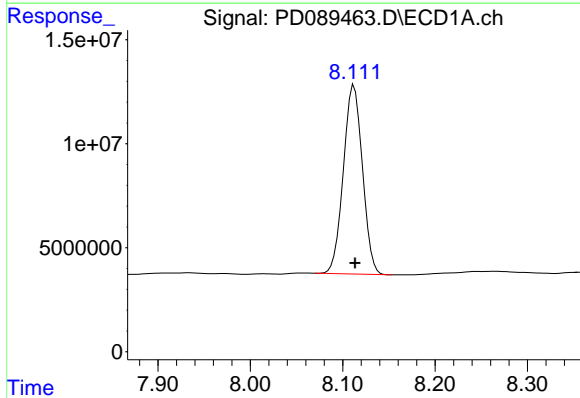
R.T.: 7.629 min  
 Delta R.T.: 0.000 min  
 Response: 184166850  
 Conc: 45.22 ng/ml

Instrument :  
 ECD\_D  
 ClientSampleId :



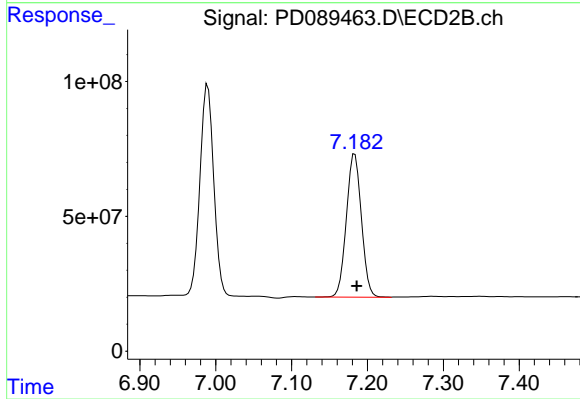
#21 Endrin ketone

R.T.: 6.989 min  
 Delta R.T.: -0.003 min  
 Response: 994985950  
 Conc: 46.06 ng/ml



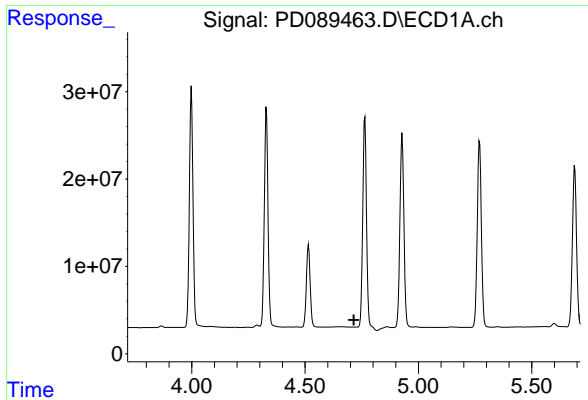
#22 Mirex

R.T.: 8.112 min  
 Delta R.T.: -0.001 min  
 Response: 130502384  
 Conc: 42.93 ng/ml



#22 Mirex

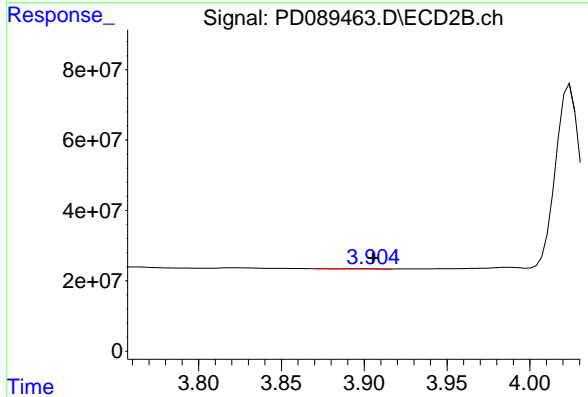
R.T.: 7.183 min  
 Delta R.T.: -0.002 min  
 Response: 733326756  
 Conc: 43.97 ng/ml



#23 Chlordane-1

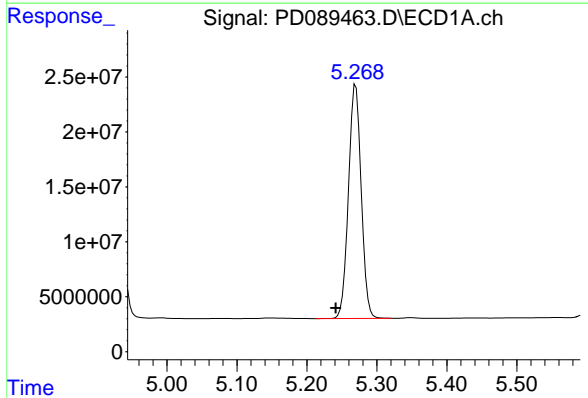
R.T.: 0.000 min  
 Exp R.T.: 4.715 min  
 Response: 0  
 Conc: N.D.

Instrument :  
 ECD\_D  
 ClientSampleId :



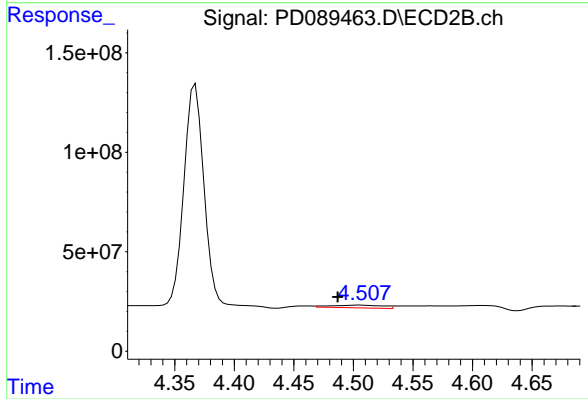
#23 Chlordane-1

R.T.: 3.900 min  
 Delta R.T.: -0.006 min  
 Response: 439054  
 Conc: 0.47 ng/ml



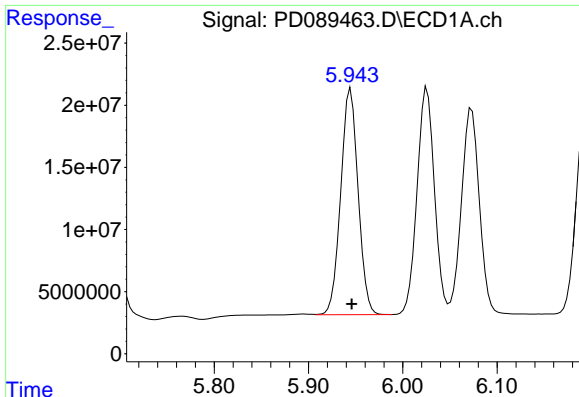
#24 Chlordane-2

R.T.: 5.270 min  
 Delta R.T.: 0.029 min  
 Response: 269048768  
 Conc: 1232.40 ng/ml



#24 Chlordane-2

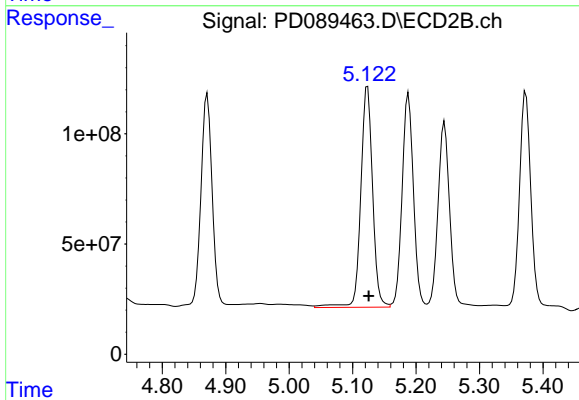
R.T.: 4.505 min  
 Delta R.T.: 0.018 min  
 Response: 41865720  
 Conc: 43.99 ng/ml



#25 Chlordane-3

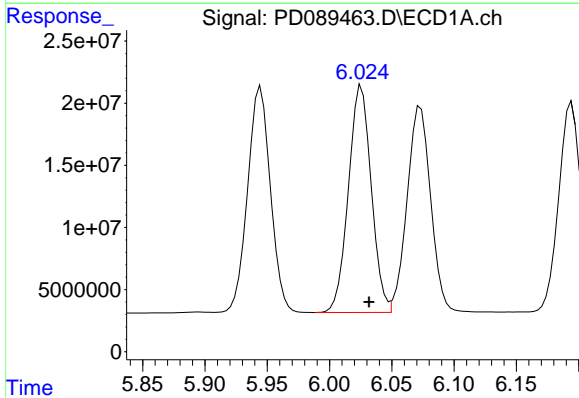
R.T.: 5.945 min  
 Delta R.T.: -0.001 min  
 Response: 233267748  
 Conc: 270.46 ng/ml

Instrument :  
 ECD\_D  
 ClientSampleId :



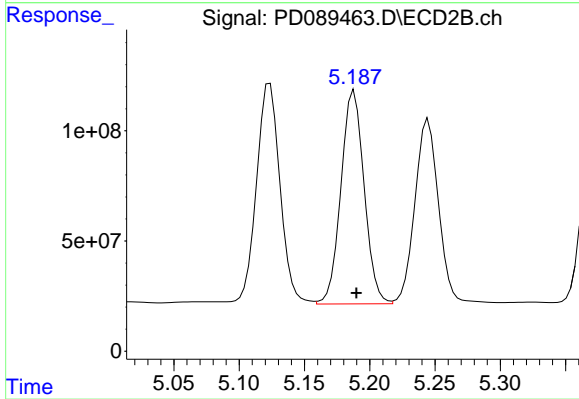
#25 Chlordane-3

R.T.: 5.124 min  
 Delta R.T.: -0.002 min  
 Response: 1296658099  
 Conc: 436.56 ng/ml



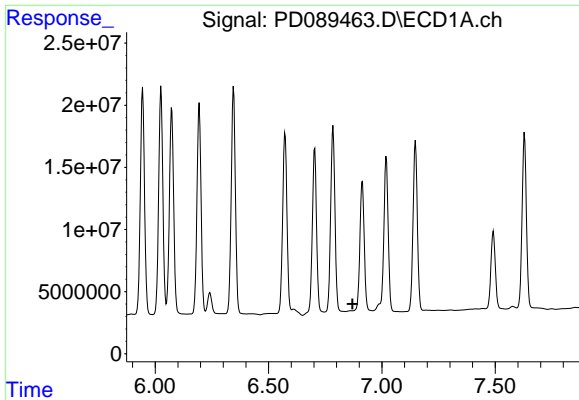
#26 Chlordane-4

R.T.: 6.026 min  
 Delta R.T.: -0.006 min  
 Response: 233840521  
 Conc: 222.56 ng/ml



#26 Chlordane-4

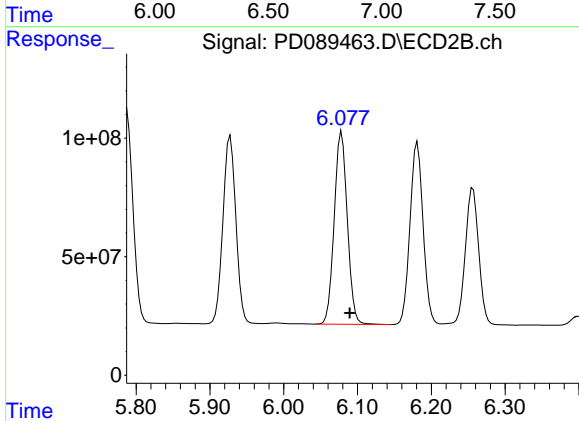
R.T.: 5.188 min  
 Delta R.T.: -0.002 min  
 Response: 1198154633  
 Conc: 477.98 ng/ml



#27 Chlordane-5

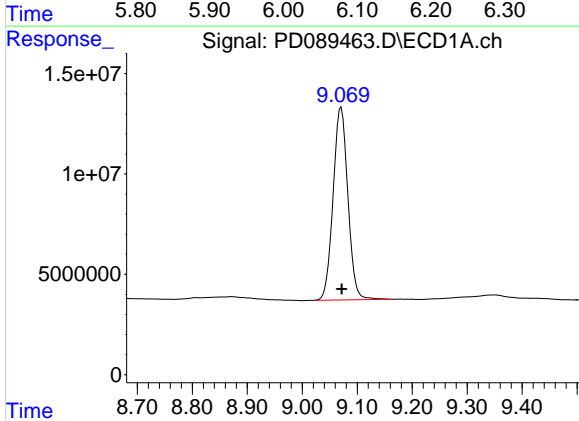
R.T.: 0.000 min  
 Exp R.T.: 6.871 min  
 Response: 0  
 Conc: N.D.

Instrument :  
 ECD\_D  
 ClientSampleId :



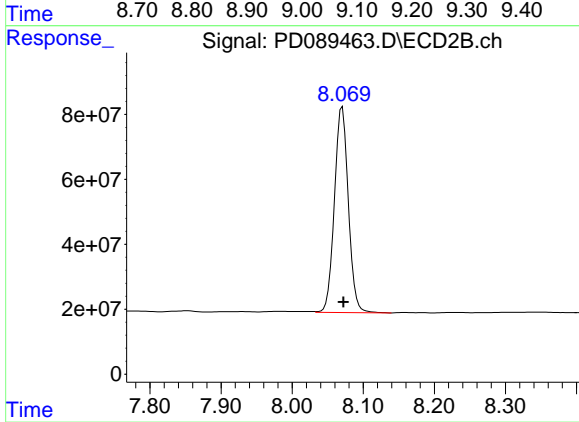
#27 Chlordane-5

R.T.: 6.078 min  
 Delta R.T.: -0.011 min  
 Response: 1002109512  
 Conc: 885.52 ng/ml



#28 Decachlorobiphenyl

R.T.: 9.071 min  
 Delta R.T.: -0.001 min  
 Response: 178936691  
 Conc: 45.56 ng/ml



#28 Decachlorobiphenyl

R.T.: 8.070 min  
 Delta R.T.: -0.002 min  
 Response: 861370503  
 Conc: 43.57 ng/ml