

Data Path : Z:\pestpcbsrv\HPCHEM1\ECD_D\Data\PD071125\
 Data File : PD089465.D
 Signal(s) : Signal #1: ECD1A.ch Signal #2: ECD2B.ch
 Acq On : 11 Jul 2025 15:45
 Operator : AR\AJ
 Sample : Q2565-04
 Misc :
 ALS Vial : 15 Sample Multiplier: 1

Instrument :
 ECD_D
 ClientSampleId :

Integration File signal 1: autoint1.e
 Integration File signal 2: autoint2.e
 Quant Time: Jul 11 22:54:10 2025
 Quant Method : Z:\pestpcbsrv\HPCHEM1\ECD_D\Method\PD061825.M
 Quant Title : GC Extractables
 QLast Update : Wed Jun 18 05:39:05 2025
 Response via : Initial Calibration
 Integrator: ChemStation

Volume Inj. : 1 µl
 Signal #1 Phase : ZB-MR2 Signal #2 Phase: ZB-MR2
 Signal #1 Info : 30M x 0.32mm x0.5 Signal #2 Info : 30M x 0.32mm x 0.25µm

	Compound	RT#1	RT#2	Resp#1	Resp#2	ng/ml	ng/ml

System Monitoring Compounds							
1)	SA Tetrachlo...	3.550	2.881	13498023	123.8E6	4.731	7.300 #
28)	SA Decachlor...	9.071	8.070	31981698	133.3E6	8.143	6.744
Target Compounds							
2)	A alpha-BHC	3.988	3.412f	1880400	30132449	0.323	1.124 #
4)	MA Heptachlor	4.936	4.096	277944	10773561	0.051	0.430 #
5)	MB Aldrin	5.290f	4.371	557357	4486250	0.105	0.185 #
6)	B beta-BHC	4.522	4.038	245057	10241410	0.111	0.953 #
7)	B delta-BHC	4.776	4.287f	1407848	158356	0.274	0.006 #
8)	B Heptachlo...	5.684	4.869	1079930	10891068	0.224	0.497 #
9)	A Endosulfan I	6.060	5.240	201297	2641239	0.045	0.127 #
10)	B gamma-Chl...	5.967f	5.151f	775520	24082956	0.162	1.007 #
11)	B alpha-Chl...	6.028	5.213f	451476	2368975	0.093	0.103
12)	B 4,4'-DDE	6.193	5.368	1490891	1677925	0.342	0.073 #
13)	MA Dieldrin	6.345	5.508	94802	27674995	0.020	1.192 #
14)	MA Endrin	6.574	5.790	1840929	5073450	0.446	0.234 #
16)	A 4,4'-DDD	6.724f	5.928	566172	-1256718	0.165	N.D. #
17)	MA 4,4'-DDT	6.996f	6.178	3553435	17751423	0.938	0.875
18)	B Endrin al...	6.937f	6.284f	-1487103	17485650	N.D.	1.142
19)	B Endosulfa...	0.000	6.483	0	2621247	N.D.	0.134 #
20)	A Methoxychlor	0.000	6.766	0	723640	N.D.	0.067 #
21)	B Endrin ke...	0.000	6.978	0	876394	N.D.	0.041 #
22)	Mirex	0.000	7.185	0	3424055	N.D.	0.205 #
23)	Chlordane-1	0.000	3.912	0	4121185	N.D.	4.421 #
24)	Chlordane-2	5.234	4.478	400039	4942283	1.832	5.194 #
25)	Chlordane-3	5.967	5.151f	775520	24082956	0.899	8.108 #
26)	Chlordane-4	6.028	5.213f	451476	2368975	0.430	0.945 #

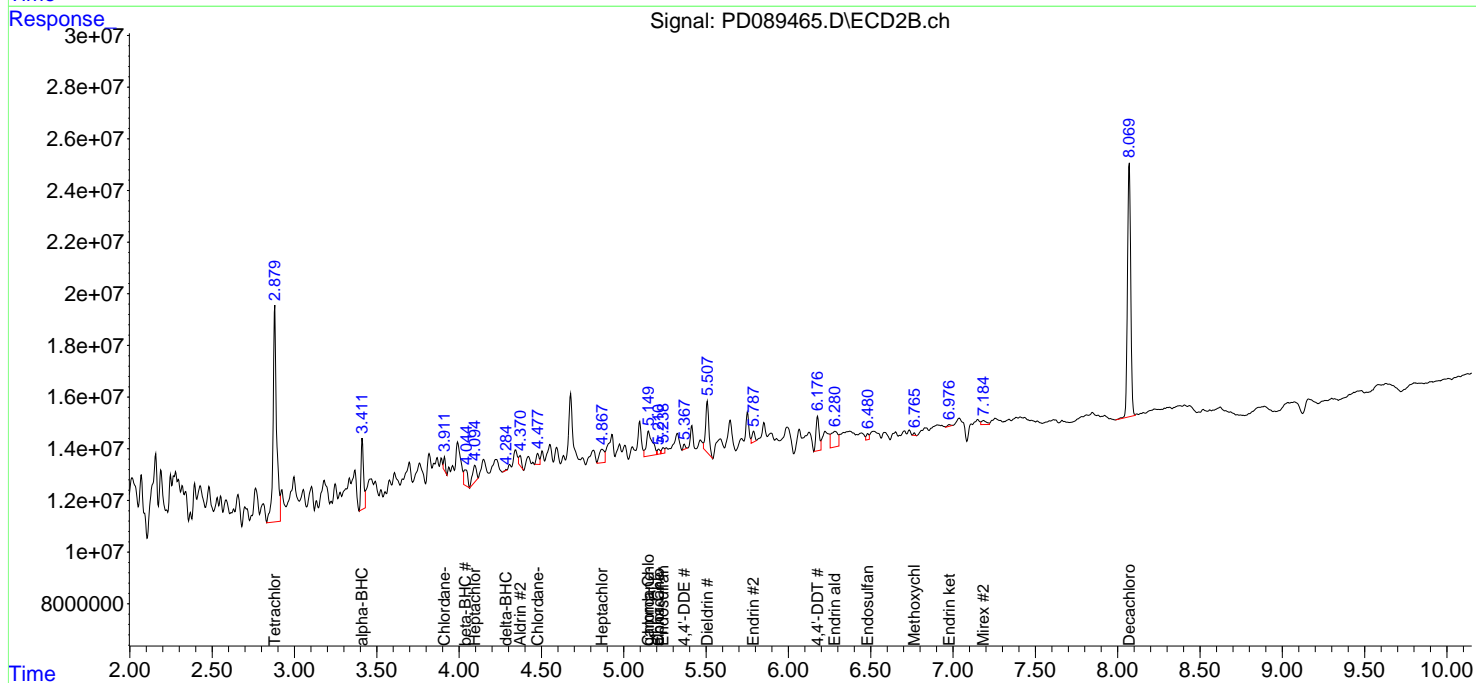
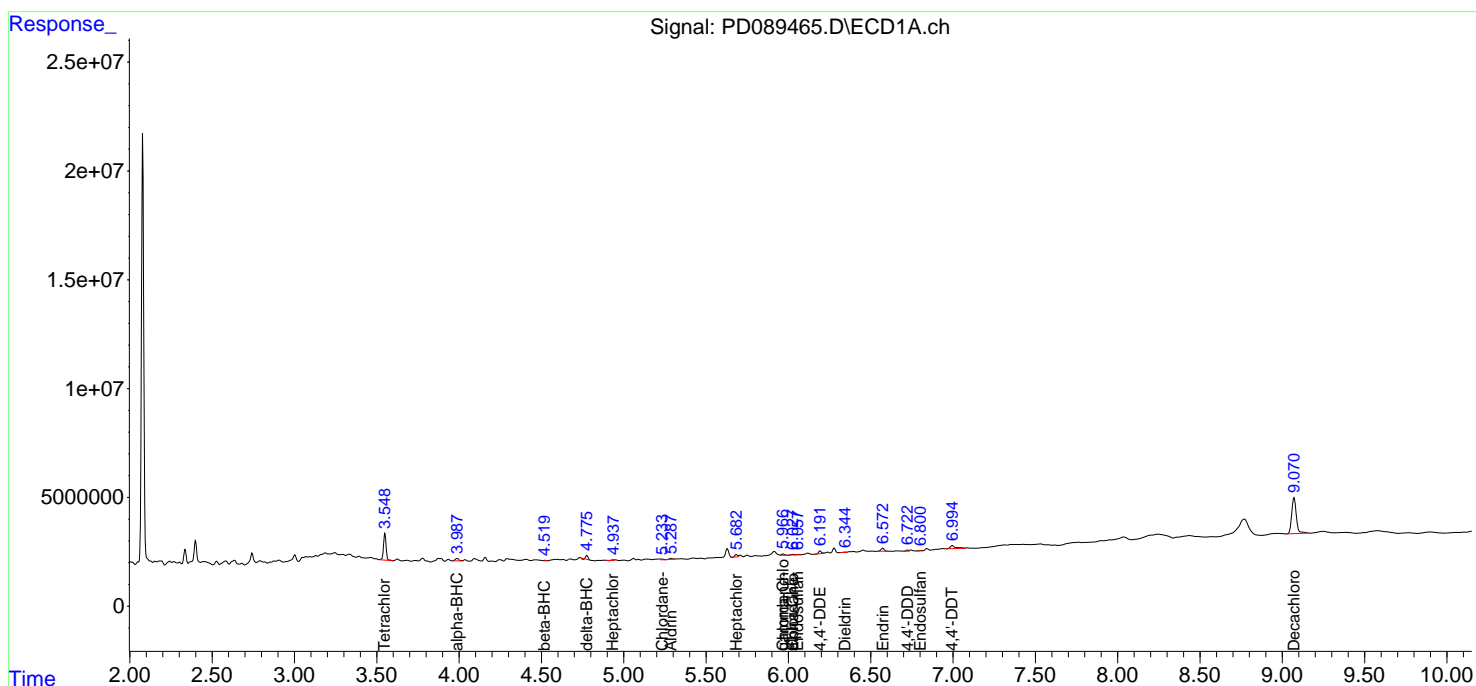
(f)=RT Delta > 1/2 Window (#)=Amounts differ by > 25% (m)=manual int.

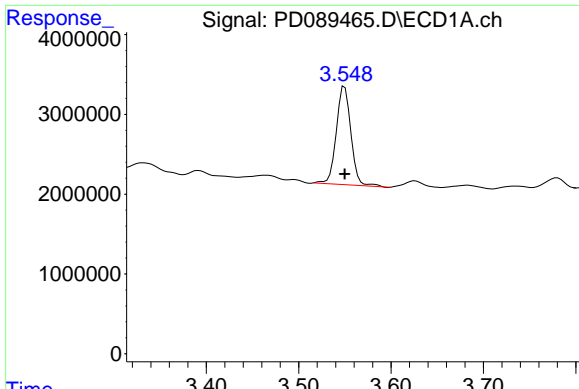
Data Path : Z:\pestpcbsrv\HPCHEM1\ECD_D\Data\PD071125\
 Data File : PD089465.D
 Signal(s) : Signal #1: ECD1A.ch Signal #2: ECD2B.ch
 Acq On : 11 Jul 2025 15:45
 Operator : AR\AJ
 Sample : Q2565-04
 Misc :
 ALS Vial : 15 Sample Multiplier: 1

Instrument :
 ECD_D
 ClientSampleId :

Integration File signal 1: autoint1.e
 Integration File signal 2: autoint2.e
 Quant Time: Jul 11 22:54:10 2025
 Quant Method : Z:\pestpcbsrv\HPCHEM1\ECD_D\Method\PD061825.M
 Quant Title : GC Extractables
 QLast Update : Wed Jun 18 05:39:05 2025
 Response via : Initial Calibration
 Integrator: ChemStation

Volume Inj. : 1 µl
 Signal #1 Phase : ZB-MR1 Signal #2 Phase: ZB-MR2
 Signal #1 Info : 30M x 0.32mm x0.5 Signal #2 Info : 30M x 0.32mm x 0.25µm

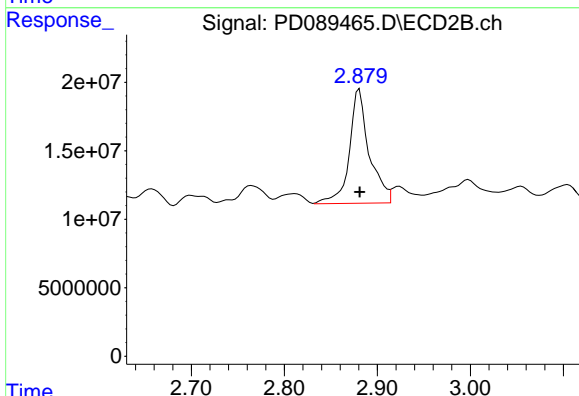




#1 Tetrachloro-m-xylene

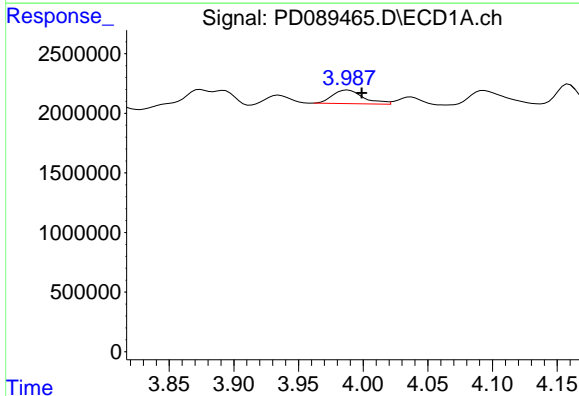
R.T.: 3.550 min
 Delta R.T.: 0.000 min
 Response: 13498023
 Conc: 4.73 ng/ml

Instrument :
 ECD_D
 ClientSampleId :



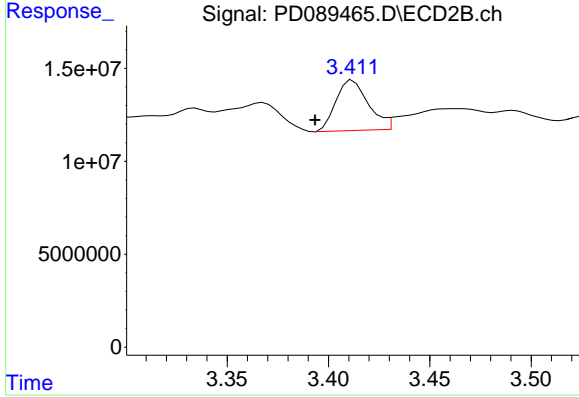
#1 Tetrachloro-m-xylene

R.T.: 2.881 min
 Delta R.T.: 0.000 min
 Response: 123751178
 Conc: 7.30 ng/ml



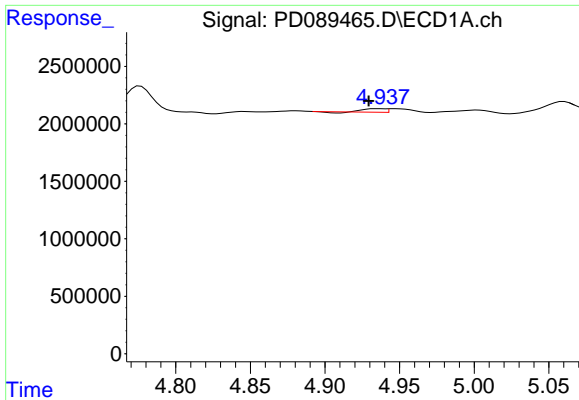
#2 alpha-BHC

R.T.: 3.988 min
 Delta R.T.: -0.011 min
 Response: 1880400
 Conc: 0.32 ng/ml



#2 alpha-BHC

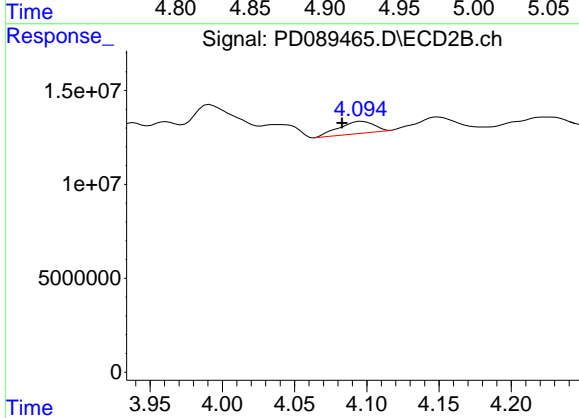
R.T.: 3.412 min
 Delta R.T.: 0.019 min
 Response: 30132449
 Conc: 1.12 ng/ml



#4 Heptachlor

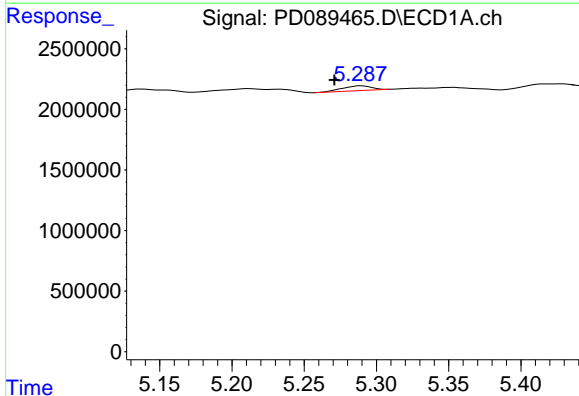
R.T.: 4.936 min
 Delta R.T.: 0.007 min
 Response: 277944
 Conc: 0.05 ng/ml

Instrument :
 ECD_D
 ClientSampleId :



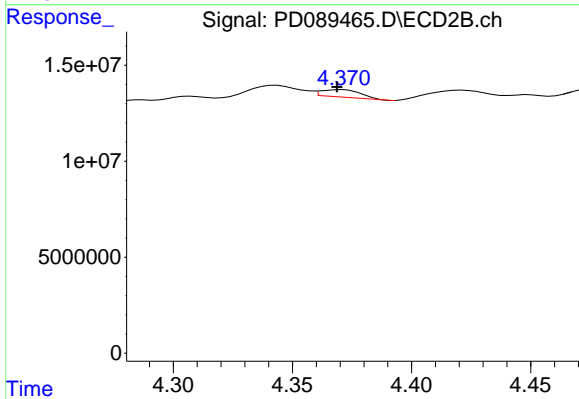
#4 Heptachlor

R.T.: 4.096 min
 Delta R.T.: 0.014 min
 Response: 10773561
 Conc: 0.43 ng/ml



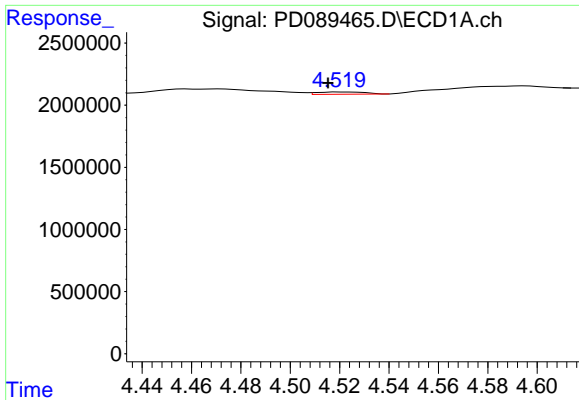
#5 Aldrin

R.T.: 5.290 min
 Delta R.T.: 0.019 min
 Response: 557357
 Conc: 0.10 ng/ml



#5 Aldrin

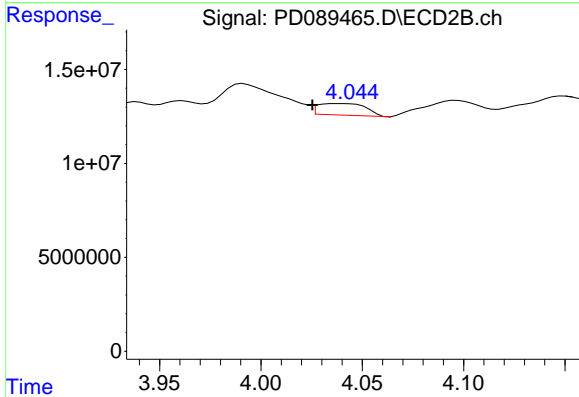
R.T.: 4.371 min
 Delta R.T.: 0.002 min
 Response: 4486250
 Conc: 0.19 ng/ml



#6 beta-BHC

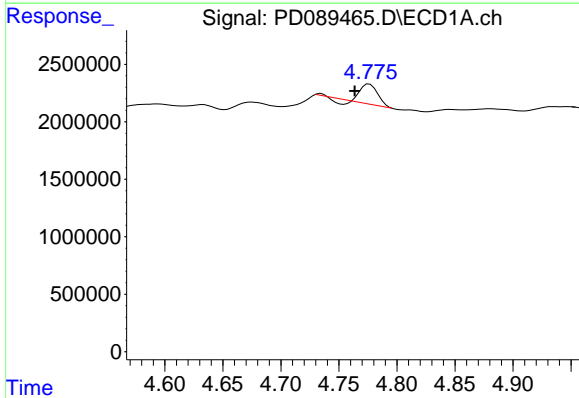
R.T.: 4.522 min
 Delta R.T.: 0.006 min
 Response: 245057
 Conc: 0.11 ng/ml

Instrument :
 ECD_D
 ClientSampleId :



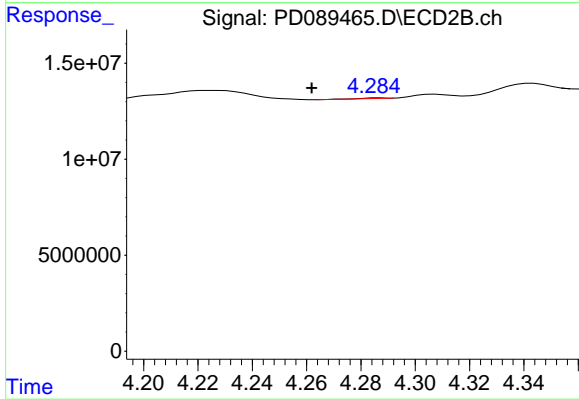
#6 beta-BHC

R.T.: 4.038 min
 Delta R.T.: 0.013 min
 Response: 10241410
 Conc: 0.95 ng/ml



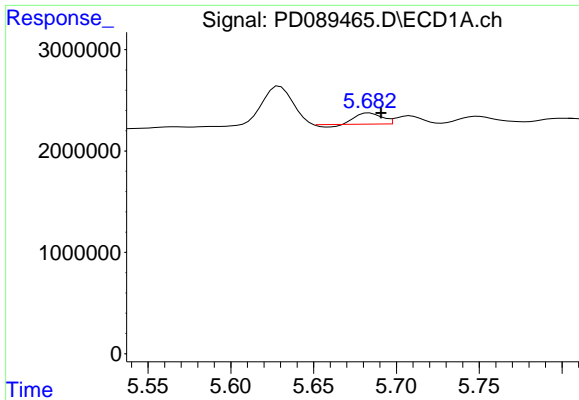
#7 delta-BHC

R.T.: 4.776 min
 Delta R.T.: 0.013 min
 Response: 1407848
 Conc: 0.27 ng/ml



#7 delta-BHC

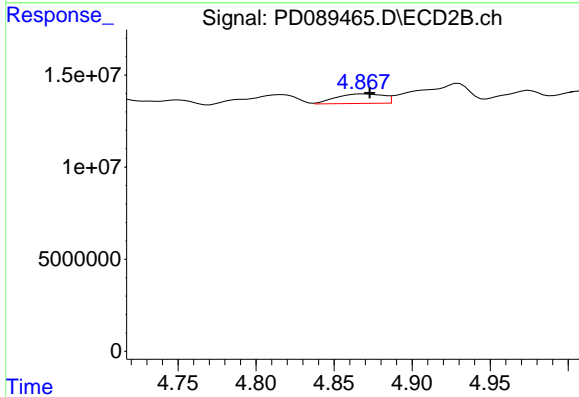
R.T.: 4.287 min
 Delta R.T.: 0.025 min
 Response: 158356
 Conc: 0.01 ng/ml



#8 Heptachlor epoxide

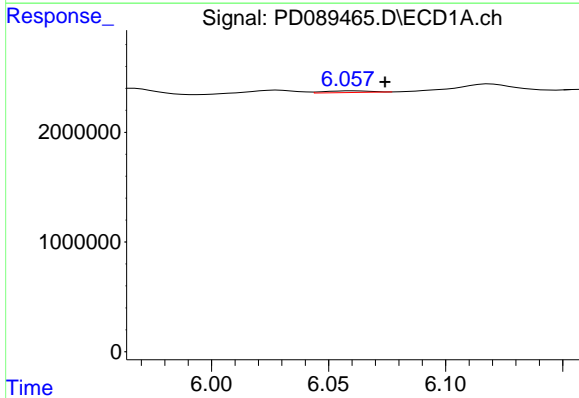
R.T.: 5.684 min
 Delta R.T.: -0.007 min
 Response: 1079930
 Conc: 0.22 ng/ml

Instrument :
 ECD_D
 ClientSampleId :



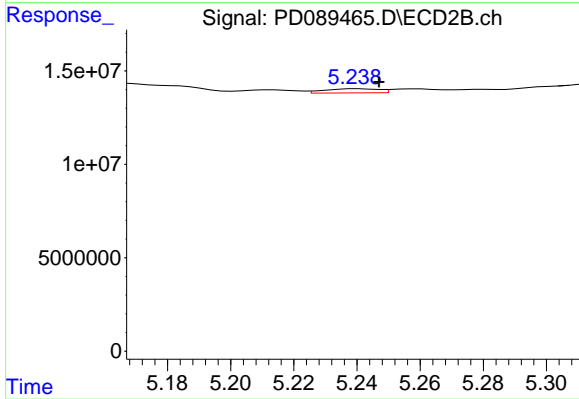
#8 Heptachlor epoxide

R.T.: 4.869 min
 Delta R.T.: -0.004 min
 Response: 10891068
 Conc: 0.50 ng/ml



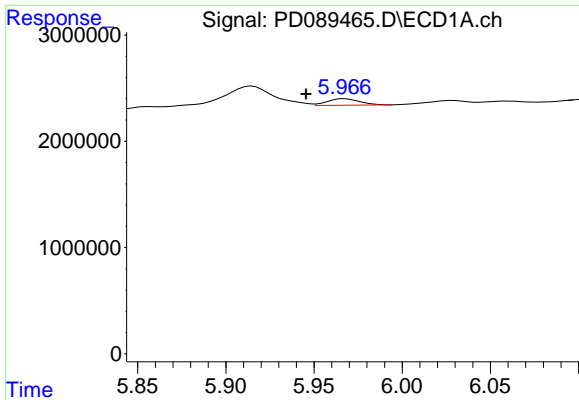
#9 Endosulfan I

R.T.: 6.060 min
 Delta R.T.: -0.014 min
 Response: 201297
 Conc: 0.04 ng/ml



#9 Endosulfan I

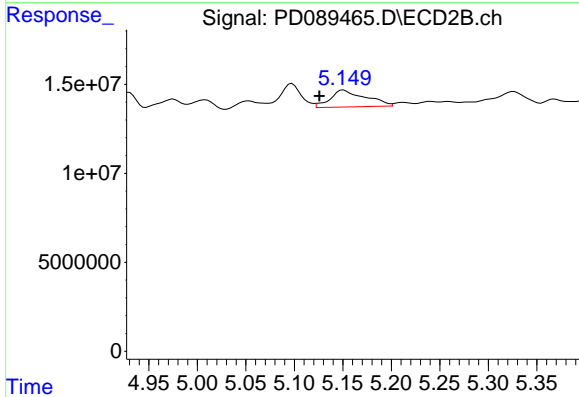
R.T.: 5.240 min
 Delta R.T.: -0.007 min
 Response: 2641239
 Conc: 0.13 ng/ml



#10 gamma-Chlordane

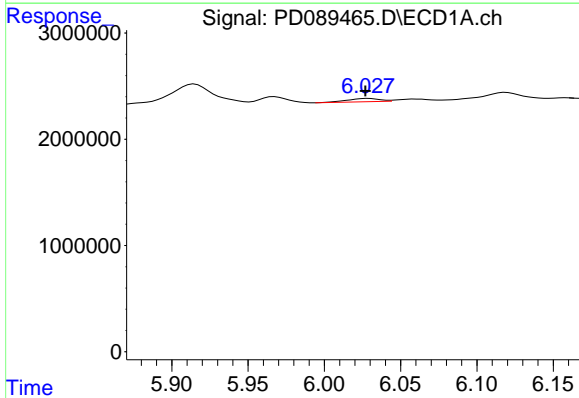
R.T.: 5.967 min
 Delta R.T.: 0.022 min
 Response: 775520
 Conc: 0.16 ng/ml

Instrument :
 ECD_D
 ClientSampleId :



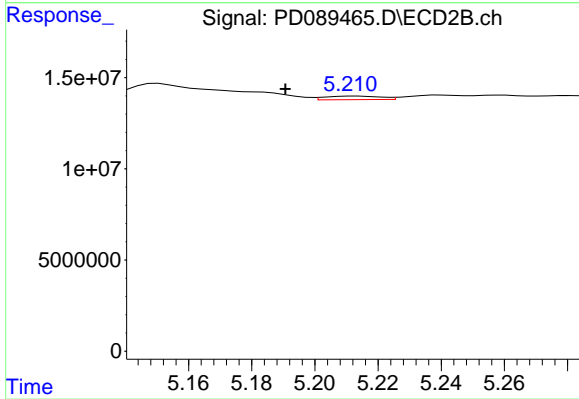
#10 gamma-Chlordane

R.T.: 5.151 min
 Delta R.T.: 0.025 min
 Response: 24082956
 Conc: 1.01 ng/ml



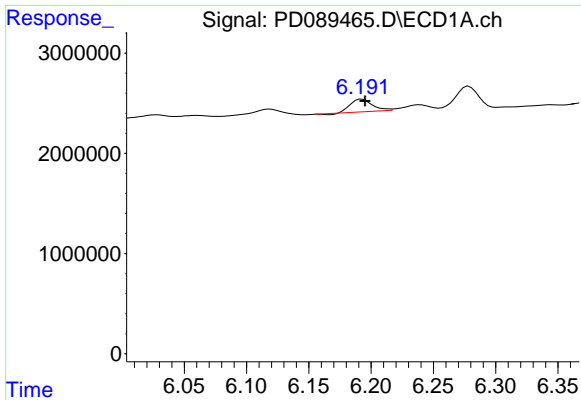
#11 alpha-Chlordane

R.T.: 6.028 min
 Delta R.T.: 0.002 min
 Response: 451476
 Conc: 0.09 ng/ml



#11 alpha-Chlordane

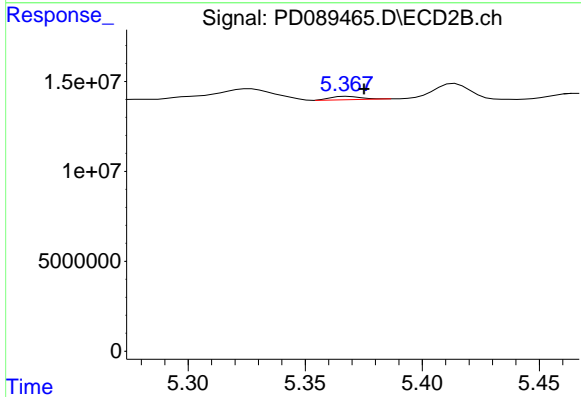
R.T.: 5.213 min
 Delta R.T.: 0.022 min
 Response: 2368975
 Conc: 0.10 ng/ml



#12 4,4'-DDE

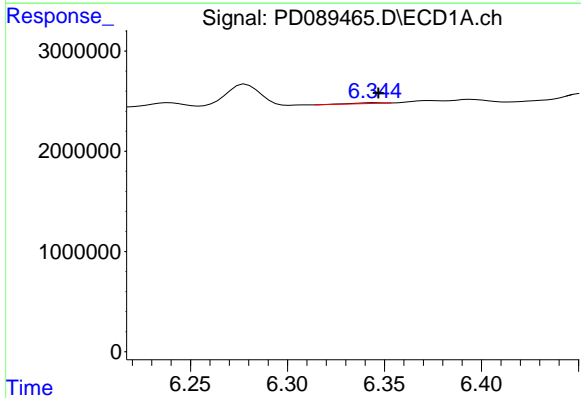
R.T.: 6.193 min
 Delta R.T.: -0.003 min
 Response: 1490891
 Conc: 0.34 ng/ml

Instrument :
 ECD_D
 ClientSampleId :



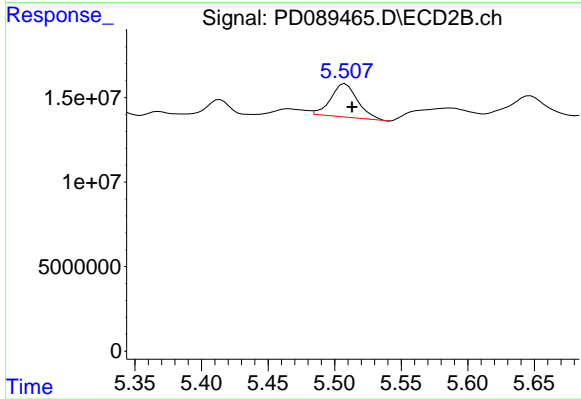
#12 4,4'-DDE

R.T.: 5.368 min
 Delta R.T.: -0.007 min
 Response: 1677925
 Conc: 0.07 ng/ml



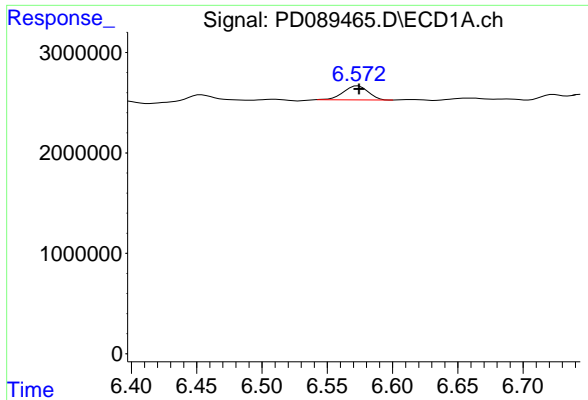
#13 Dieldrin

R.T.: 6.345 min
 Delta R.T.: -0.002 min
 Response: 94802
 Conc: 0.02 ng/ml



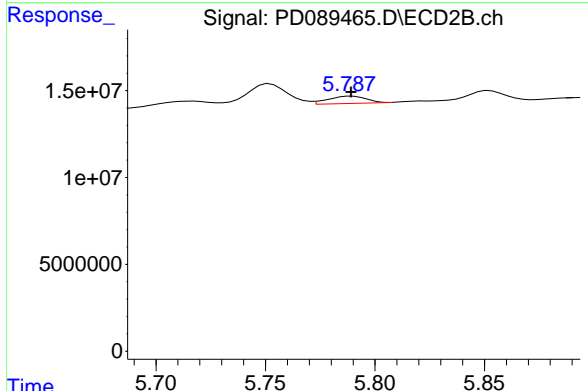
#13 Dieldrin

R.T.: 5.508 min
 Delta R.T.: -0.005 min
 Response: 27674995
 Conc: 1.19 ng/ml

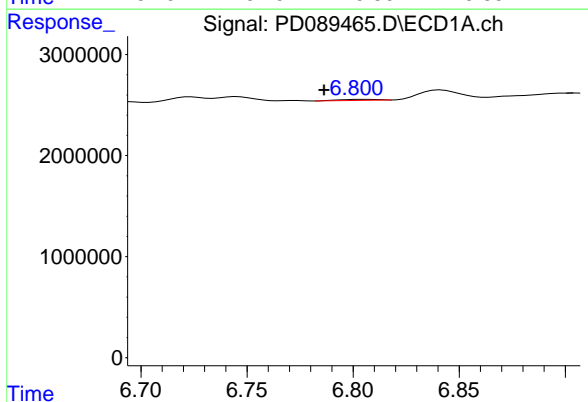


#14 Endrin
 R.T.: 6.574 min
 Delta R.T.: 0.000 min
 Response: 1840929
 Conc: 0.45 ng/ml

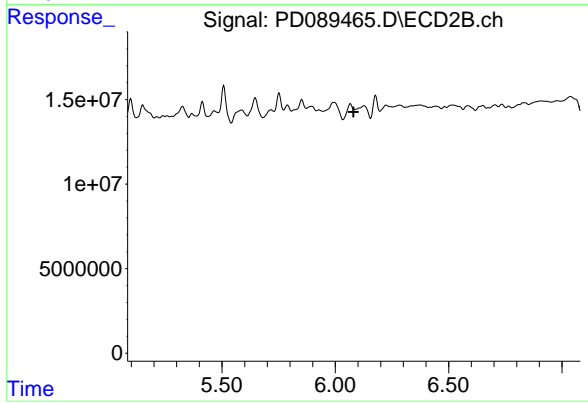
Instrument :
 ECD_D
 ClientSampleId :



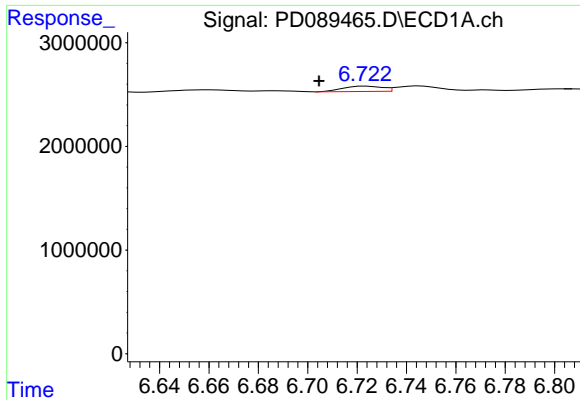
#14 Endrin
 R.T.: 5.790 min
 Delta R.T.: 0.000 min
 Response: 5073450
 Conc: 0.23 ng/ml



#15 Endosulfan II
 R.T.: 6.805 min
 Delta R.T.: 0.019 min
 Response: 119306
 Conc: 0.03 ng/ml

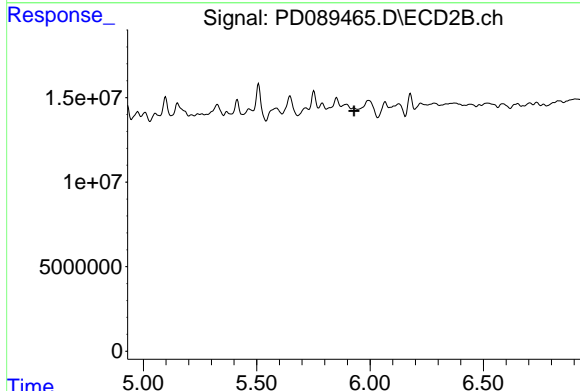


#15 Endosulfan II
 R.T.: 6.067 min
 Delta R.T.: -0.014 min
 Response: -5950718
 Conc: N.D.

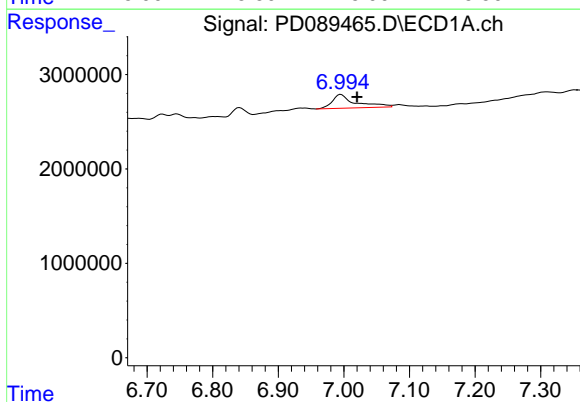


#16 4,4'-DDD
 R.T.: 6.724 min
 Delta R.T.: 0.019 min
 Response: 566172
 Conc: 0.16 ng/ml

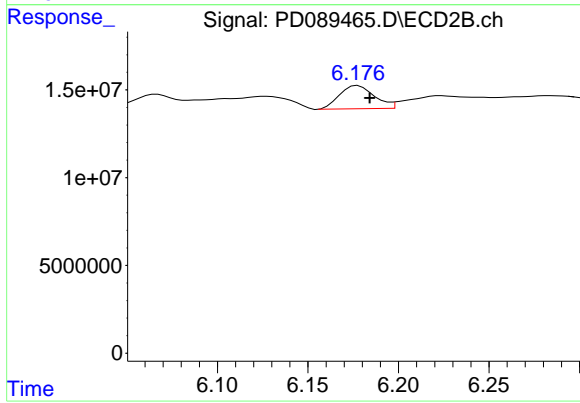
Instrument :
 ECD_D
 ClientSampleId :



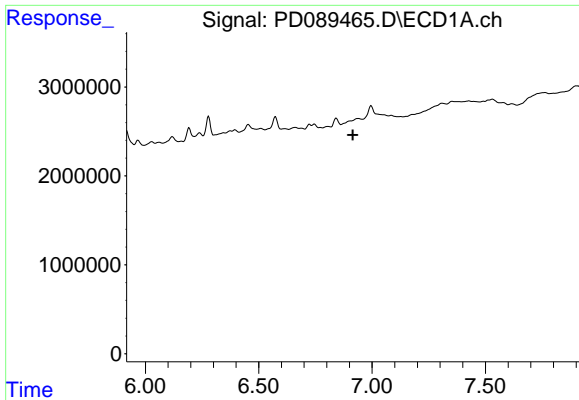
#16 4,4'-DDD
 R.T.: 5.928 min
 Delta R.T.: -0.002 min
 Response: -1256718
 Conc: N.D.



#17 4,4'-DDT
 R.T.: 6.996 min
 Delta R.T.: -0.025 min
 Response: 3553435
 Conc: 0.94 ng/ml



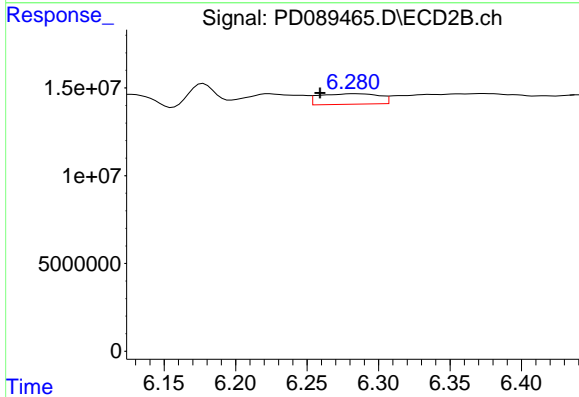
#17 4,4'-DDT
 R.T.: 6.178 min
 Delta R.T.: -0.006 min
 Response: 17751423
 Conc: 0.88 ng/ml



#18 Endrin aldehyde

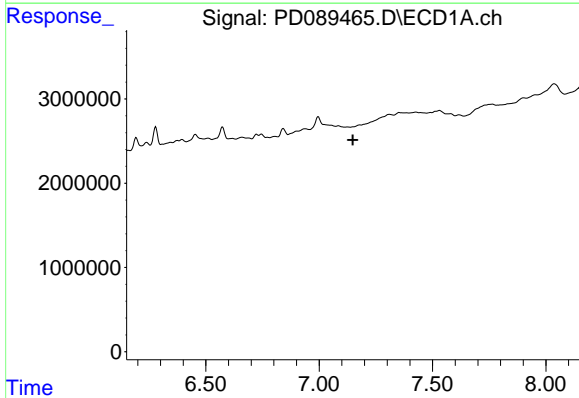
R.T.: 6.937 min
 Delta R.T.: 0.022 min
 Response: -1487103
 Conc: N.D.

Instrument :
 ECD_D
 ClientSampleId :



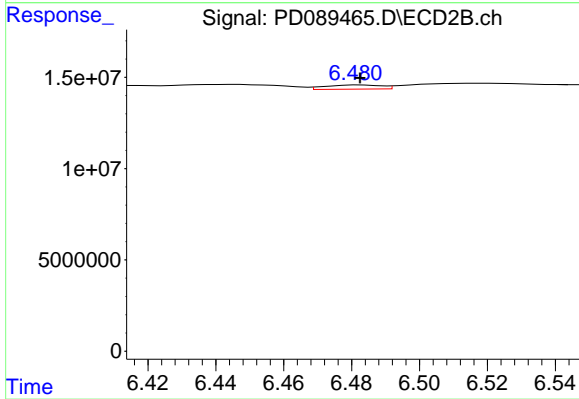
#18 Endrin aldehyde

R.T.: 6.284 min
 Delta R.T.: 0.024 min
 Response: 17485650
 Conc: 1.14 ng/ml



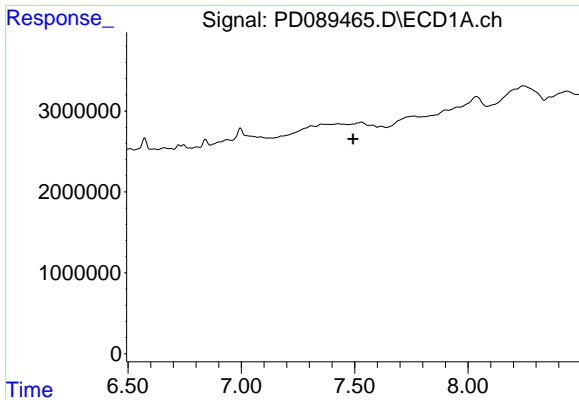
#19 Endosulfan Sulfate

R.T.: 0.000 min
 Exp R.T. : 7.148 min
 Response: 0
 Conc: N.D.



#19 Endosulfan Sulfate

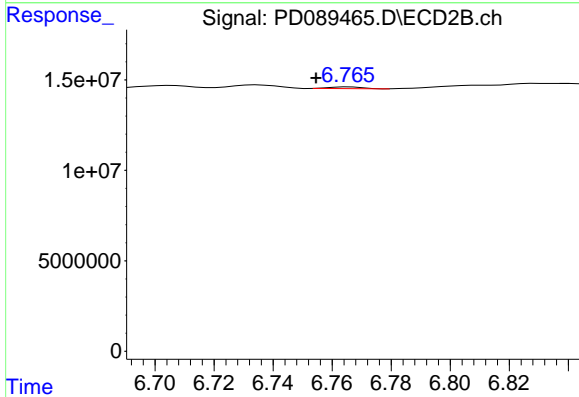
R.T.: 6.483 min
 Delta R.T.: 0.000 min
 Response: 2621247
 Conc: 0.13 ng/ml



#20 Methoxychlor

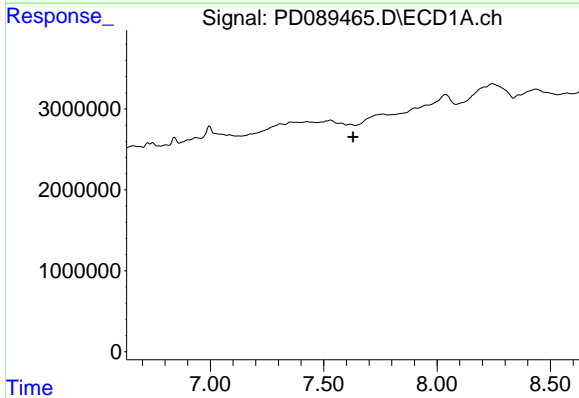
R.T.: 0.000 min
 Exp R.T.: 7.493 min
 Response: 0
 Conc: N.D.

Instrument :
 ECD_D
 ClientSampleId :



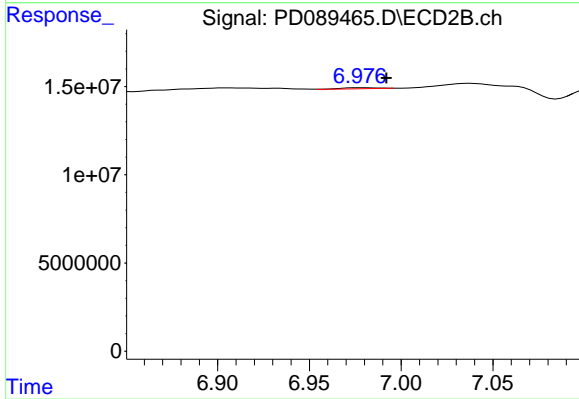
#20 Methoxychlor

R.T.: 6.766 min
 Delta R.T.: 0.011 min
 Response: 723640
 Conc: 0.07 ng/ml



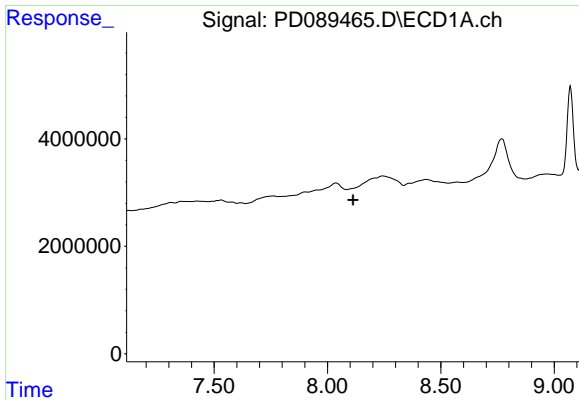
#21 Endrin ketone

R.T.: 0.000 min
 Exp R.T.: 7.629 min
 Response: 0
 Conc: N.D.



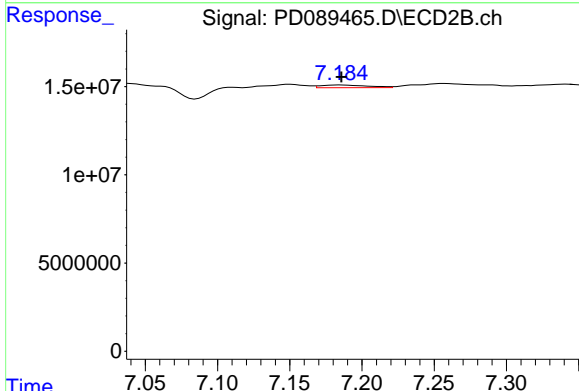
#21 Endrin ketone

R.T.: 6.978 min
 Delta R.T.: -0.014 min
 Response: 876394
 Conc: 0.04 ng/ml

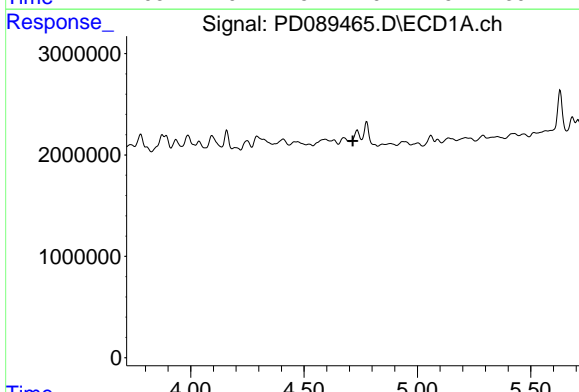


#22 Mirex
 R.T.: 0.000 min
 Exp R.T.: 8.113 min
 Response: 0
 Conc: N.D.

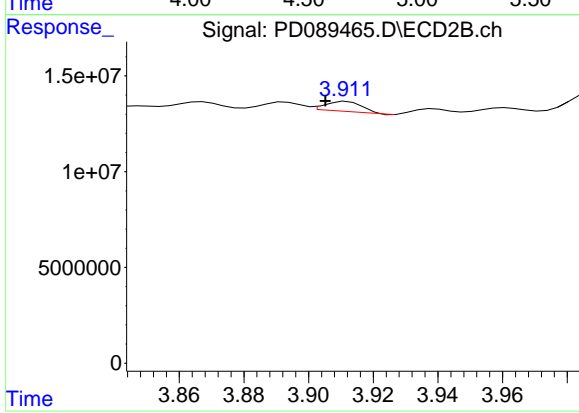
Instrument :
 ECD_D
 ClientSampleId :



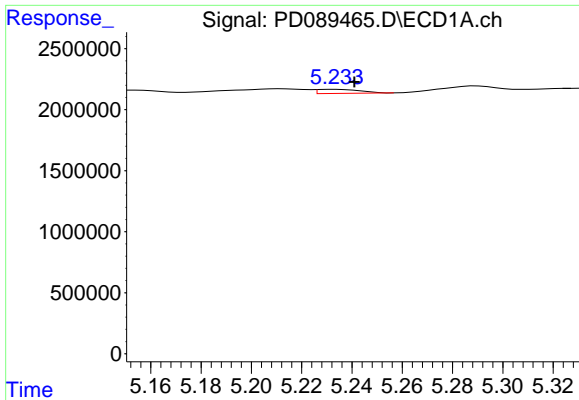
#22 Mirex
 R.T.: 7.185 min
 Delta R.T.: 0.000 min
 Response: 3424055
 Conc: 0.21 ng/ml



#23 Chlordane-1
 R.T.: 0.000 min
 Exp R.T.: 4.715 min
 Response: 0
 Conc: N.D.



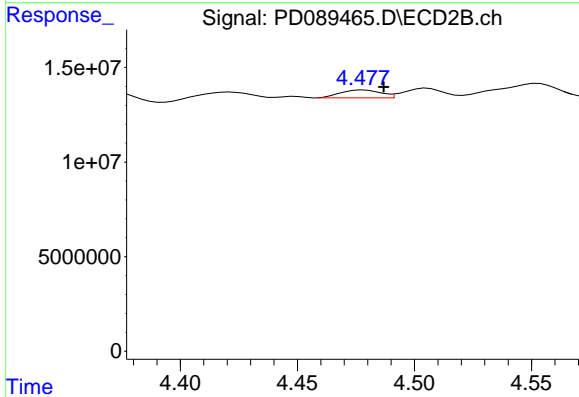
#23 Chlordane-1
 R.T.: 3.912 min
 Delta R.T.: 0.007 min
 Response: 4121185
 Conc: 4.42 ng/ml



#24 Chlordane-2

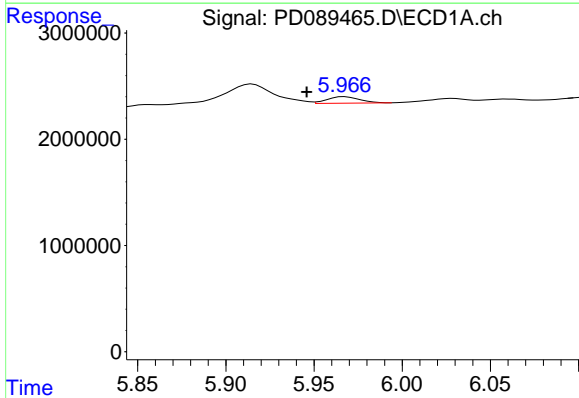
R.T.: 5.234 min
 Delta R.T.: -0.007 min
 Response: 400039
 Conc: 1.83 ng/ml

Instrument : ECD_D
 ClientSampleId :



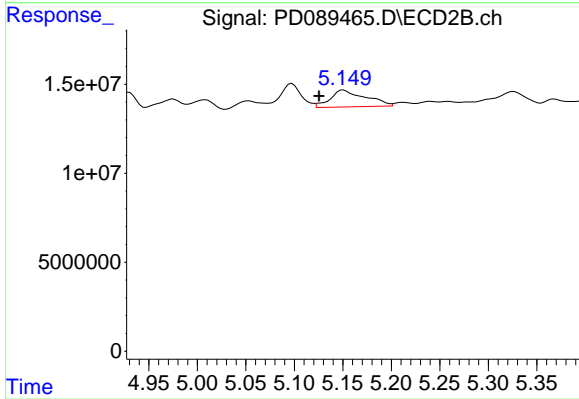
#24 Chlordane-2

R.T.: 4.478 min
 Delta R.T.: -0.009 min
 Response: 4942283
 Conc: 5.19 ng/ml



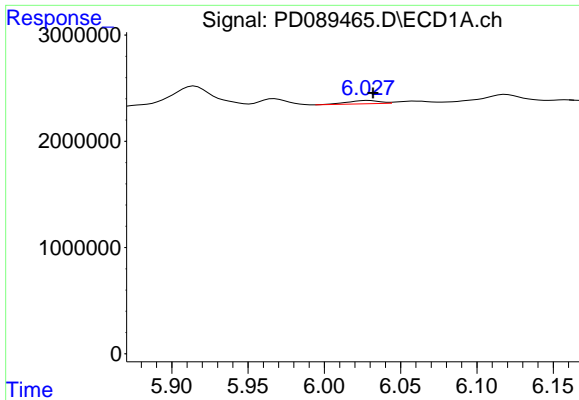
#25 Chlordane-3

R.T.: 5.967 min
 Delta R.T.: 0.021 min
 Response: 775520
 Conc: 0.90 ng/ml



#25 Chlordane-3

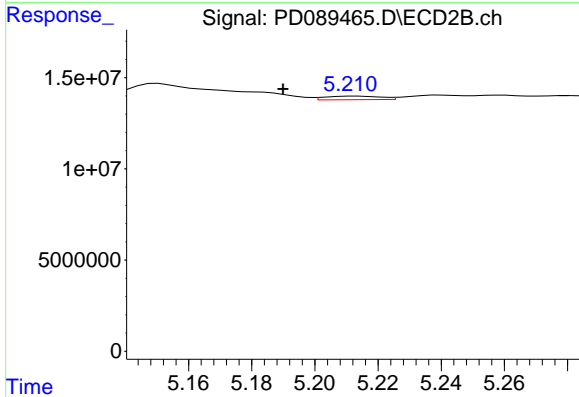
R.T.: 5.151 min
 Delta R.T.: 0.025 min
 Response: 24082956
 Conc: 8.11 ng/ml



#26 Chlordane-4

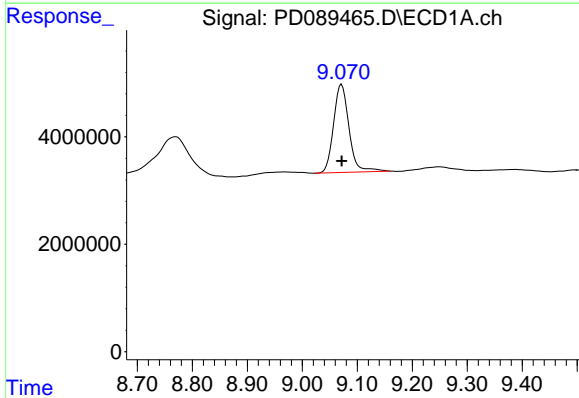
R.T.: 6.028 min
 Delta R.T.: -0.003 min
 Response: 451476
 Conc: 0.43 ng/ml

Instrument :
 ECD_D
 ClientSampleId :



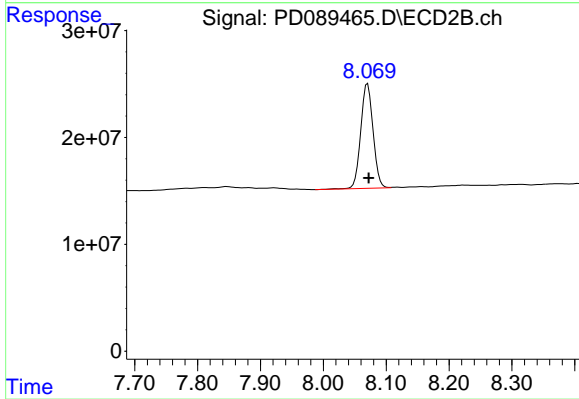
#26 Chlordane-4

R.T.: 5.213 min
 Delta R.T.: 0.023 min
 Response: 2368975
 Conc: 0.95 ng/ml



#28 Decachlorobiphenyl

R.T.: 9.071 min
 Delta R.T.: 0.000 min
 Response: 31981698
 Conc: 8.14 ng/ml



#28 Decachlorobiphenyl

R.T.: 8.070 min
 Delta R.T.: -0.002 min
 Response: 133336371
 Conc: 6.74 ng/ml