

Data Path : Z:\pestpcbsrv\HPCHEM1\ECD_D\Data\PD071125\
 Data File : PD089466.D
 Signal(s) : Signal #1: ECD1A.ch Signal #2: ECD2B.ch
 Acq On : 11 Jul 2025 15:58
 Operator : AR\AJ
 Sample : Q2565-05
 Misc :
 ALS Vial : 16 Sample Multiplier: 1

Instrument :
 ECD_D
 ClientSampleId :

Integration File signal 1: autoint1.e
 Integration File signal 2: autoint2.e
 Quant Time: Jul 11 22:54:28 2025
 Quant Method : Z:\pestpcbsrv\HPCHEM1\ECD_D\Method\PD061825.M
 Quant Title : GC Extractables
 QLast Update : Wed Jun 18 05:39:05 2025
 Response via : Initial Calibration
 Integrator: ChemStation

Volume Inj. : 1 µl
 Signal #1 Phase : ZB-MR2 Signal #2 Phase: ZB-MR2
 Signal #1 Info : 30M x 0.32mm x0.5 Signal #2 Info : 30M x 0.32mm x 0.25µm

| | Compound | RT#1 | RT#2 | Resp#1 | Resp#2 | ng/ml | ng/ml |
|-----------------------------|-----------------|--------|--------|----------|----------|--------|-----------|
| ----- | | | | | | | |
| System Monitoring Compounds | | | | | | | |
| 1) | SA Tetrachlo... | 3.549 | 2.897 | 34117090 | 6858.7E6 | 11.958 | 404.568 # |
| 2) | SA Decachlor... | 9.070 | 8.071 | 33007427 | 149.4E6 | 8.404 | 7.556 |
| Target Compounds | | | | | | | |
| 2) | A alpha-BHC | 3.982f | 3.386 | 16095033 | 36841066 | 2.761 | 1.375 # |
| 3) | MA gamma-BHC... | 4.336 | 3.746f | 2758284 | 271044 | 0.494 | 0.011 # |
| 4) | MA Heptachlor | 4.956f | 4.079 | 4771928 | 2649930 | 0.875 | 0.106 # |
| 5) | MB Aldrin | 5.268 | 4.367 | 2337275 | 52469840 | 0.440 | 2.167 # |
| 6) | B beta-BHC | 4.520 | 4.023 | 1251290 | 104.1E6 | 0.567 | 9.691 # |
| 7) | B delta-BHC | 4.784f | 4.257 | 2305722 | 21414557 | 0.449 | 0.861 # |
| 8) | B Heptachlo... | 5.688 | 4.877 | 1839106 | 23224096 | 0.381 | 1.061 # |
| 9) | A Endosulfan I | 0.000 | 5.243 | 0 | 3461346 | N.D. | 0.166 # |
| 10) | B gamma-Chl... | 5.969f | 5.112 | 3981131 | 11101981 | 0.831 | 0.464 # |
| 11) | B alpha-Chl... | 6.036 | 5.194 | 5928283 | 25369948 | 1.225 | 1.108 |
| 12) | B 4,4'-DDE | 6.180f | 5.401f | 28682 | 829.8E6 | 0.007 | 36.212 # |
| 13) | MA Dieldrin | 6.334 | 5.496f | 2429575 | 189.2E6 | 0.506 | 8.154 # |
| 14) | MA Endrin | 6.551f | 5.781 | 893745 | 28998094 | 0.217 | 1.335 # |
| 15) | B Endosulfa... | 6.798 | 6.111f | 1303868 | 187.4E6 | 0.323 | 9.278 # |
| 16) | A 4,4'-DDD | 6.695 | 0.000 | 51459761 | 0 | 14.994 | N.D. # |
| 17) | MA 4,4'-DDT | 7.046f | 6.176 | 18159078 | 72887753 | 4.794 | 3.594 # |
| 19) | B Endosulfa... | 7.132f | 6.487 | 6856996 | 19870874 | 1.787 | 1.013 # |
| 20) | A Methoxychlor | 7.482 | 6.737f | 5806723 | 158.1E6 | 2.874 | 14.685 # |
| 21) | B Endrin ke... | 7.626 | 6.967f | 1713213 | 26597290 | 0.421 | 1.231 # |
| 23) | Chlordane-1 | 4.701 | 3.889 | 7056096 | 10169069 | 32.969 | 10.908 # |
| 24) | Chlordane-2 | 5.219f | 4.498 | 1870353 | 20521306 | 8.567 | 21.565 # |
| 25) | Chlordane-3 | 5.969f | 5.112 | 3981131 | 11101981 | 4.616 | 3.738 |
| 26) | Chlordane-4 | 6.036 | 5.194 | 5928283 | 25369948 | 5.642 | 10.121 # |
| 27) | Chlordane-5 | 0.000 | 6.111f | 0 | 187.4E6 | N.D. | 165.582 # |

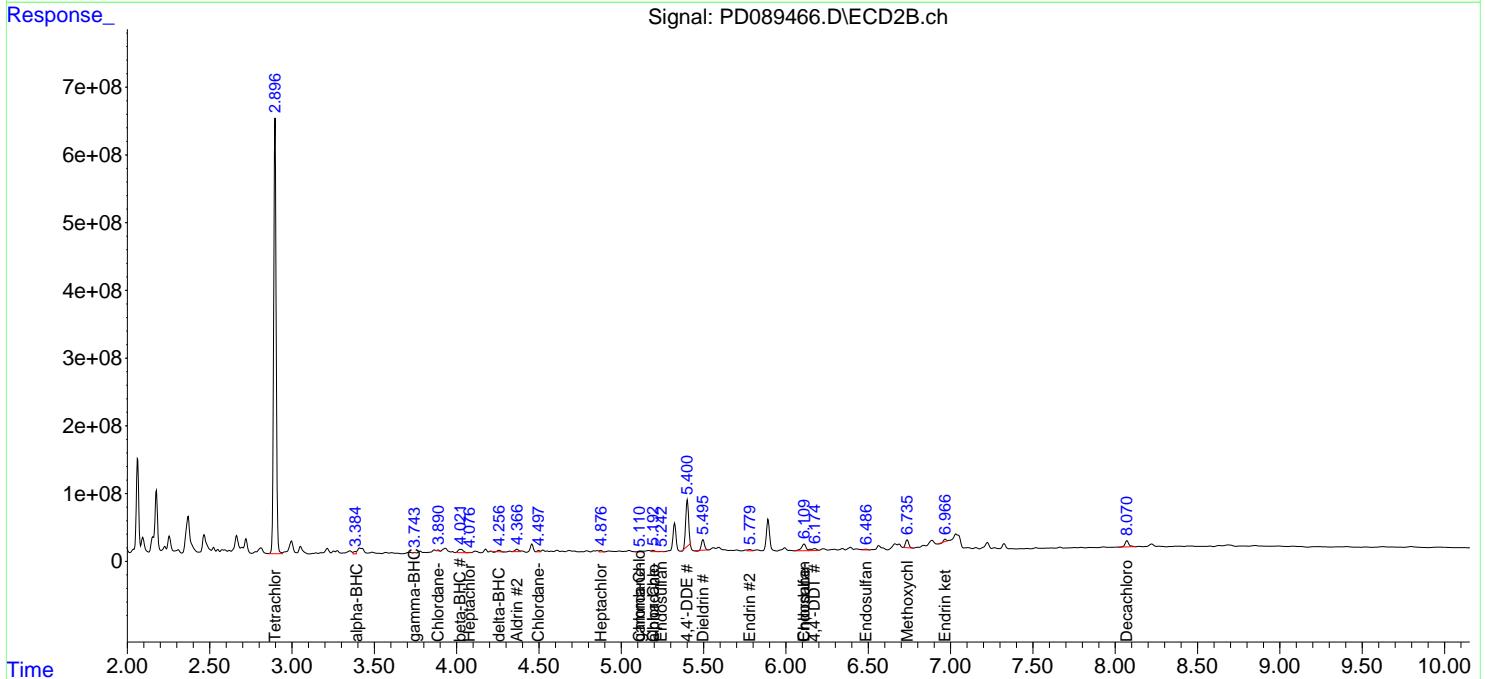
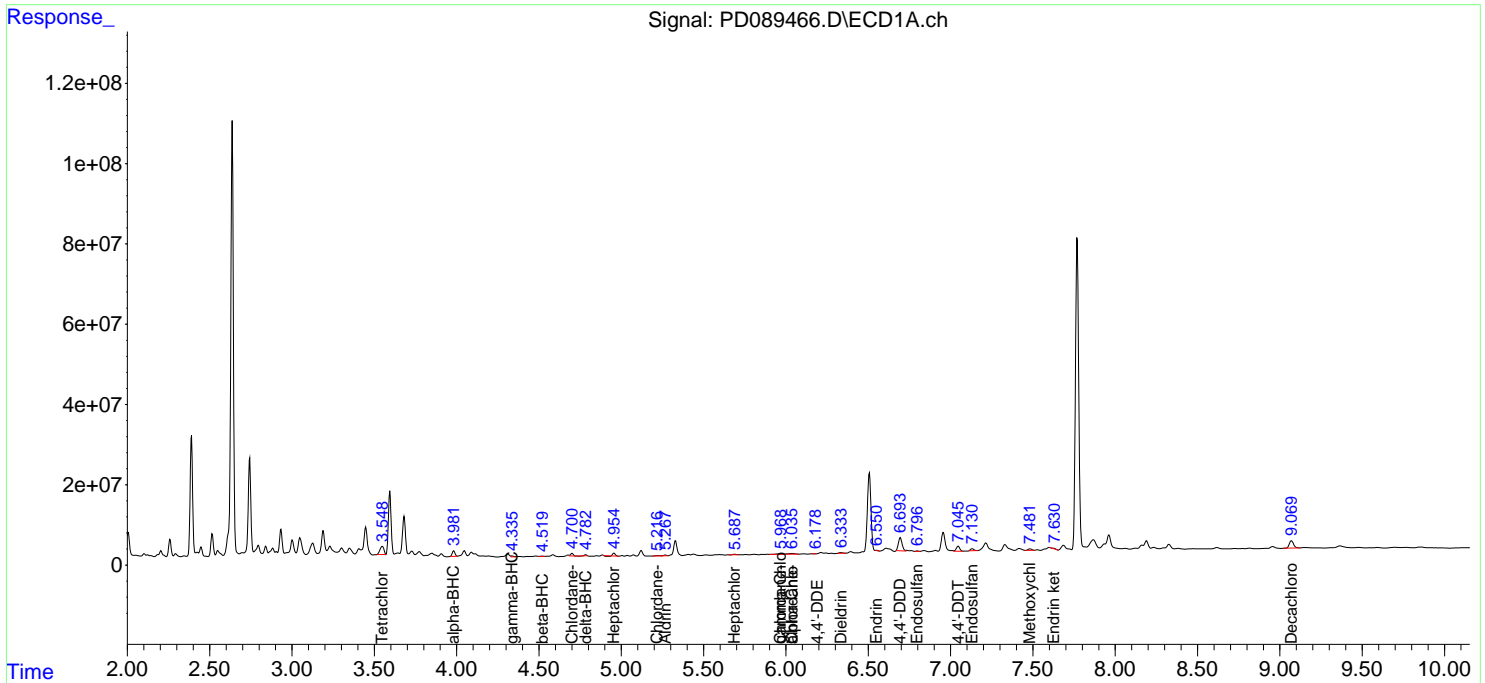
(f)=RT Delta > 1/2 Window (#)=Amounts differ by > 25% (m)=manual int.

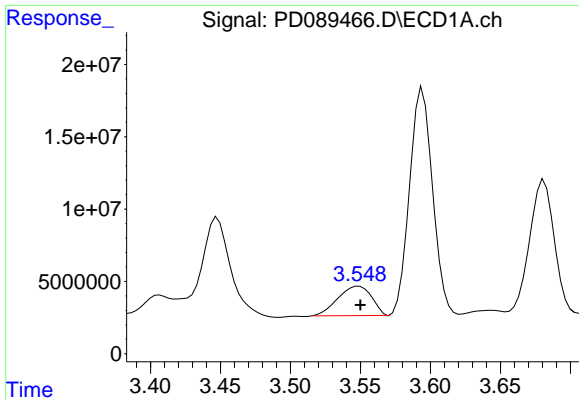
Data Path : Z:\pestpcbsrv\HPCHEM1\ECD_D\Data\PD071125\
 Data File : PD089466.D
 Signal(s) : Signal #1: ECD1A.ch Signal #2: ECD2B.ch
 Acq On : 11 Jul 2025 15:58
 Operator : AR\AJ
 Sample : Q2565-05
 Misc :
 ALS Vial : 16 Sample Multiplier: 1

Instrument :
 ECD_D
 ClientSampleId :

Integration File signal 1: autoint1.e
 Integration File signal 2: autoint2.e
 Quant Time: Jul 11 22:54:28 2025
 Quant Method : Z:\pestpcbsrv\HPCHEM1\ECD_D\Method\PD061825.M
 Quant Title : GC Extractables
 QLast Update : Wed Jun 18 05:39:05 2025
 Response via : Initial Calibration
 Integrator: ChemStation

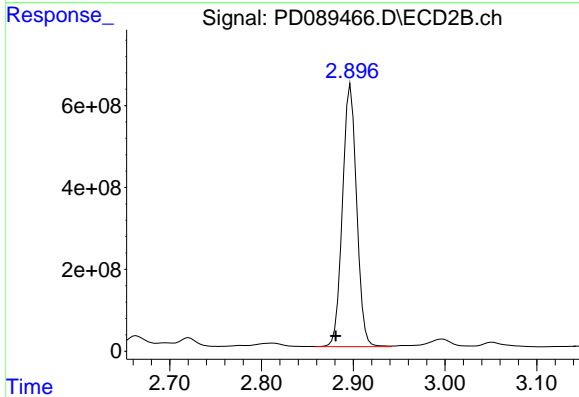
Volume Inj. : 1 µl
 Signal #1 Phase : ZB-MR1 Signal #2 Phase: ZB-MR2
 Signal #1 Info : 30M x 0.32mm x0.5 Signal #2 Info : 30M x 0.32mm x 0.25µm



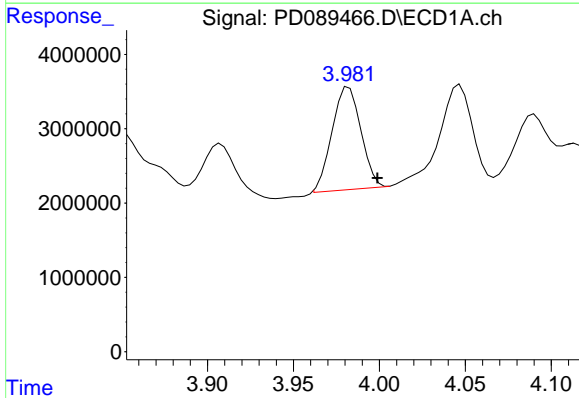


#1 Tetrachloro-m-xylene
 R.T.: 3.549 min
 Delta R.T.: -0.001 min
 Response: 34117090
 Conc: 11.96 ng/ml

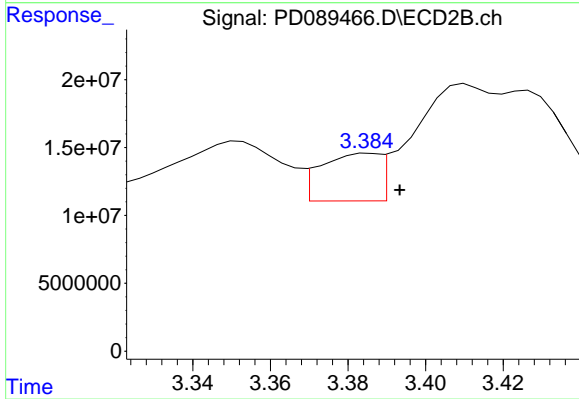
Instrument :
 ECD_D
 ClientSampleId :



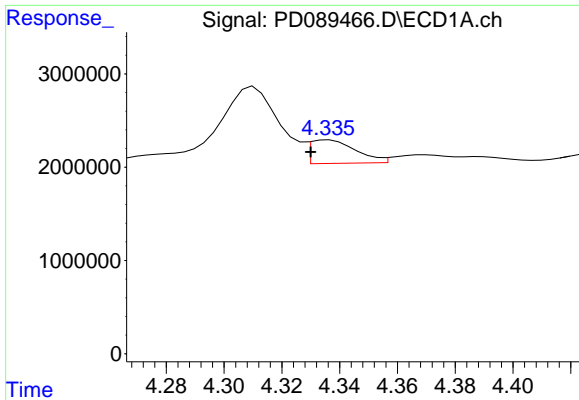
#1 Tetrachloro-m-xylene
 R.T.: 2.897 min
 Delta R.T.: 0.016 min
 Response: 6858718491
 Conc: 404.57 ng/ml



#2 alpha-BHC
 R.T.: 3.982 min
 Delta R.T.: -0.017 min
 Response: 16095033
 Conc: 2.76 ng/ml

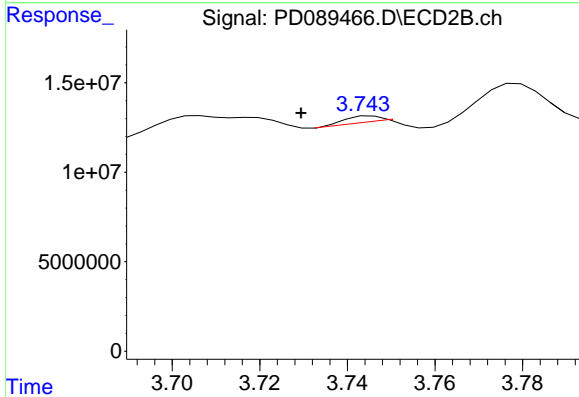


#2 alpha-BHC
 R.T.: 3.386 min
 Delta R.T.: -0.007 min
 Response: 36841066
 Conc: 1.37 ng/ml

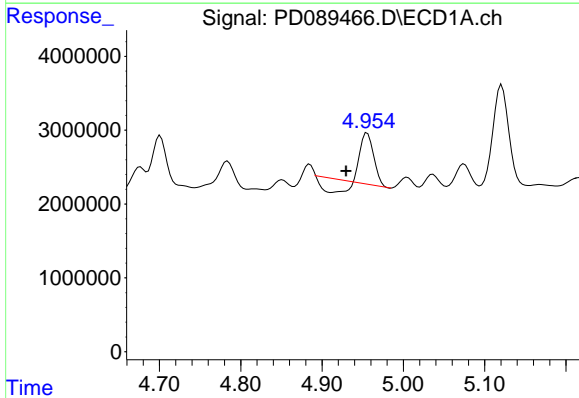


#3 gamma-BHC (Lindane)
 R.T.: 4.336 min
 Delta R.T.: 0.006 min
 Response: 2758284
 Conc: 0.49 ng/ml

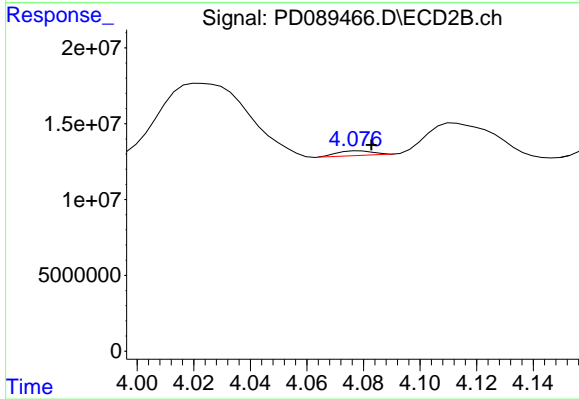
Instrument :
 ECD_D
 ClientSampleId :



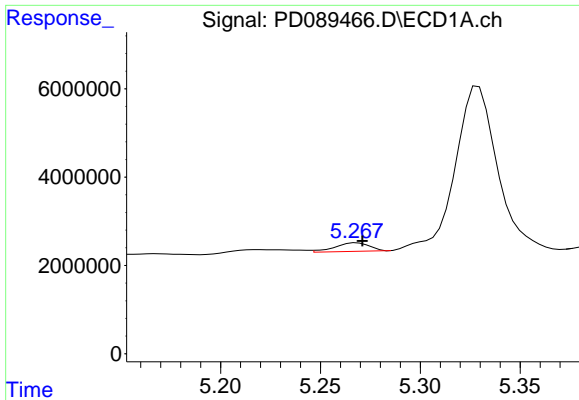
#3 gamma-BHC (Lindane)
 R.T.: 3.746 min
 Delta R.T.: 0.016 min
 Response: 271044
 Conc: 0.01 ng/ml



#4 Heptachlor
 R.T.: 4.956 min
 Delta R.T.: 0.026 min
 Response: 4771928
 Conc: 0.88 ng/ml

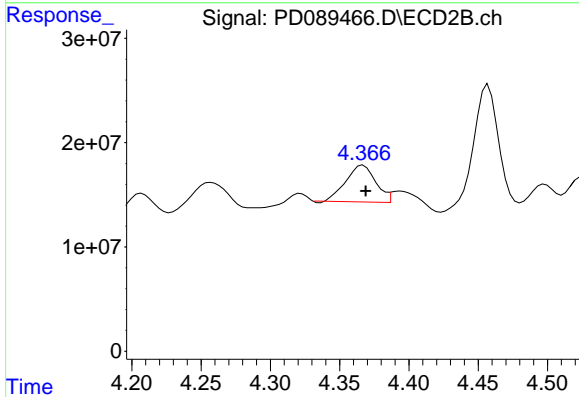


#4 Heptachlor
 R.T.: 4.079 min
 Delta R.T.: -0.004 min
 Response: 2649930
 Conc: 0.11 ng/ml

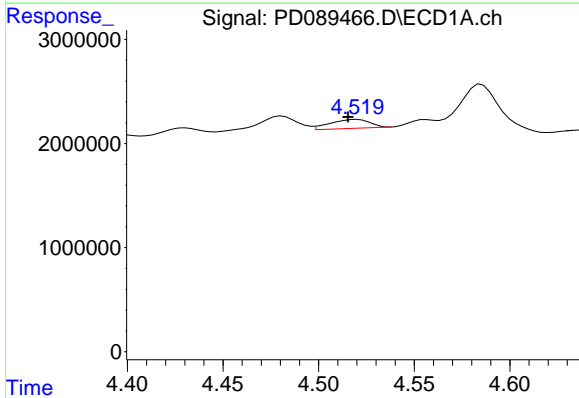


#5 Aldrin
 R.T.: 5.268 min
 Delta R.T.: -0.003 min
 Response: 2337275
 Conc: 0.44 ng/ml

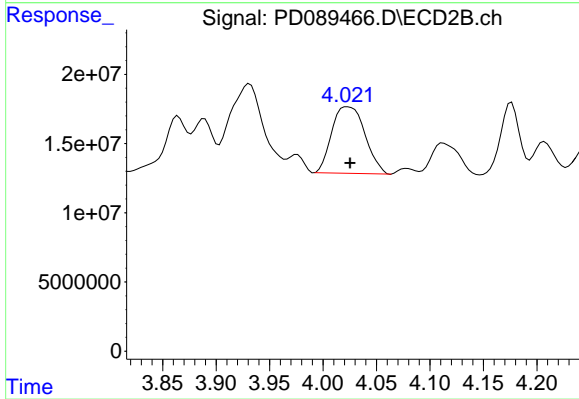
Instrument :
 ECD_D
 ClientSampleId :



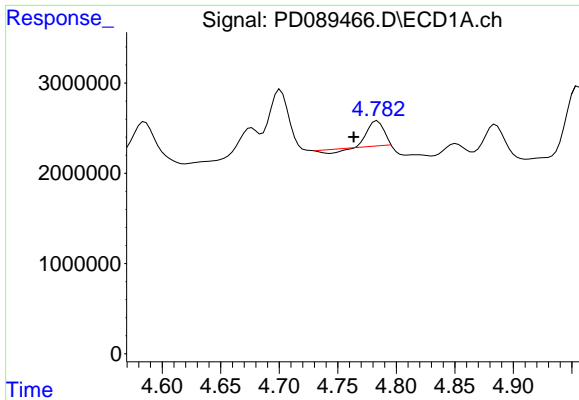
#5 Aldrin
 R.T.: 4.367 min
 Delta R.T.: -0.002 min
 Response: 52469840
 Conc: 2.17 ng/ml



#6 beta-BHC
 R.T.: 4.520 min
 Delta R.T.: 0.005 min
 Response: 1251290
 Conc: 0.57 ng/ml



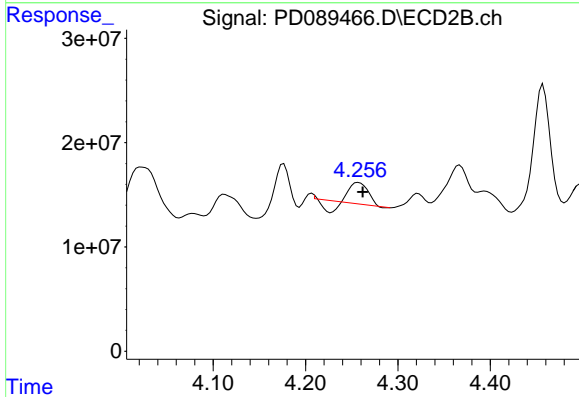
#6 beta-BHC
 R.T.: 4.023 min
 Delta R.T.: -0.002 min
 Response: 104139795
 Conc: 9.69 ng/ml



#7 delta-BHC

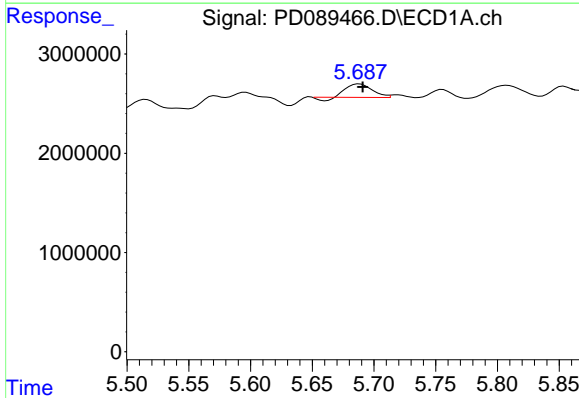
R.T.: 4.784 min
 Delta R.T.: 0.020 min
 Response: 2305722
 Conc: 0.45 ng/ml

Instrument :
 ECD_D
 ClientSampleId :



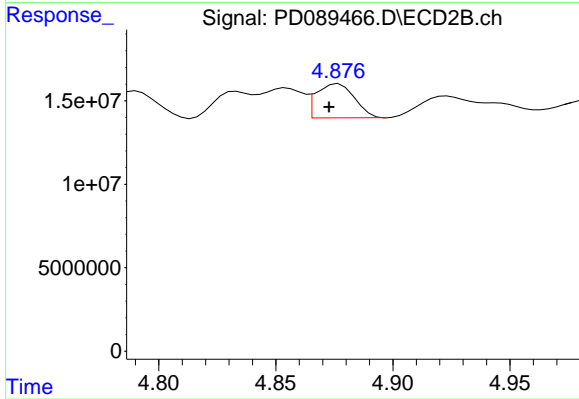
#7 delta-BHC

R.T.: 4.257 min
 Delta R.T.: -0.005 min
 Response: 21414557
 Conc: 0.86 ng/ml



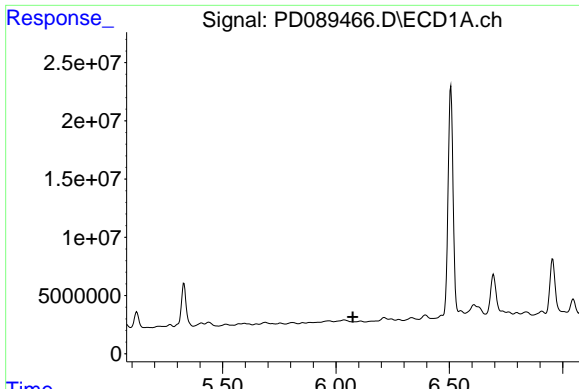
#8 Heptachlor epoxide

R.T.: 5.688 min
 Delta R.T.: -0.002 min
 Response: 1839106
 Conc: 0.38 ng/ml



#8 Heptachlor epoxide

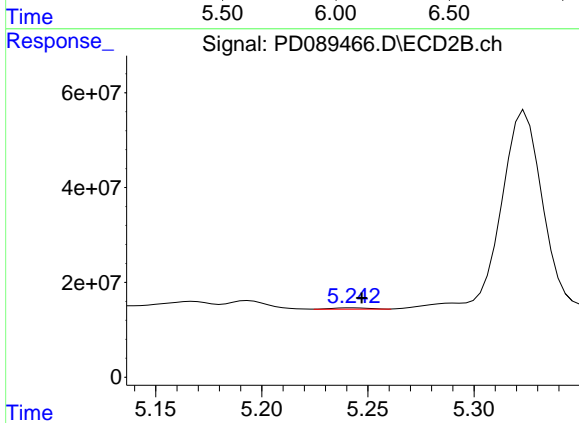
R.T.: 4.877 min
 Delta R.T.: 0.004 min
 Response: 23224096
 Conc: 1.06 ng/ml



#9 Endosulfan I

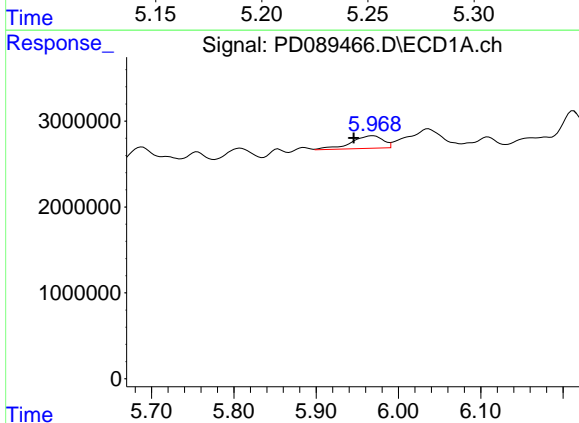
R.T.: 0.000 min
 Exp R.T.: 6.074 min
 Response: 0
 Conc: N.D.

Instrument :
 ECD_D
 ClientSampleId :



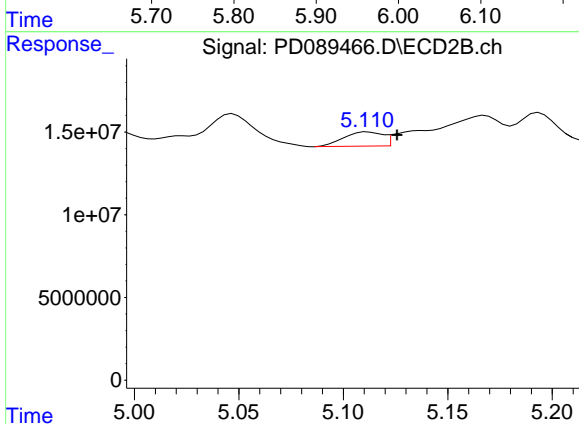
#9 Endosulfan I

R.T.: 5.243 min
 Delta R.T.: -0.004 min
 Response: 3461346
 Conc: 0.17 ng/ml



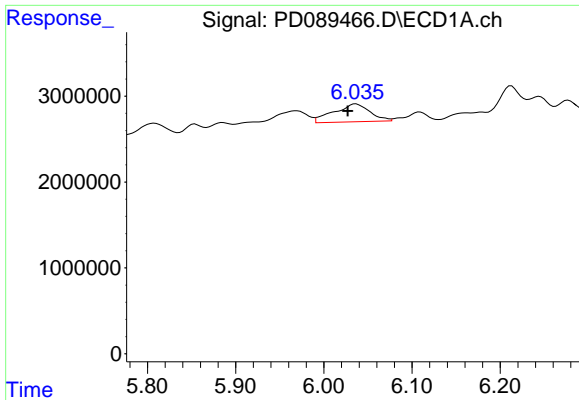
#10 gamma-Chlordane

R.T.: 5.969 min
 Delta R.T.: 0.024 min
 Response: 3981131
 Conc: 0.83 ng/ml



#10 gamma-Chlordane

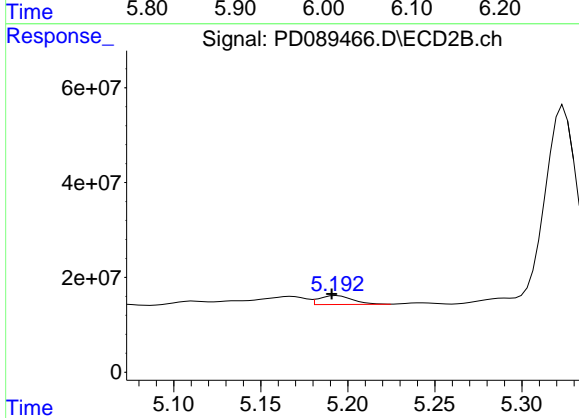
R.T.: 5.112 min
 Delta R.T.: -0.014 min
 Response: 11101981
 Conc: 0.46 ng/ml



#11 alpha-Chlordane

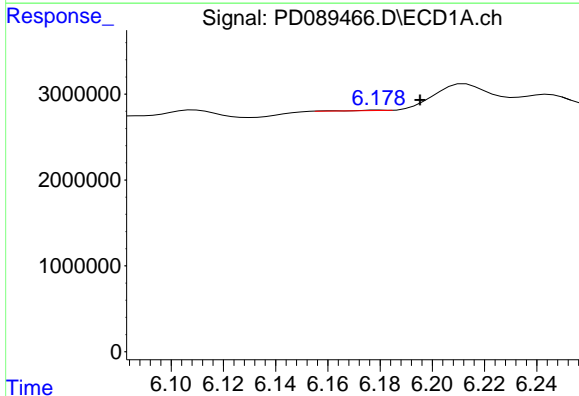
R.T.: 6.036 min
 Delta R.T.: 0.010 min
 Response: 5928283
 Conc: 1.23 ng/ml

Instrument :
 ECD_D
 ClientSampleId :



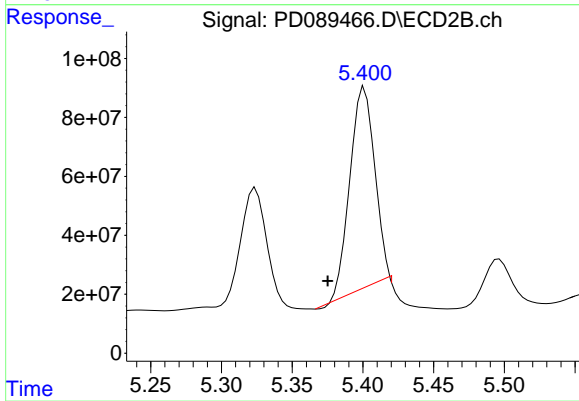
#11 alpha-Chlordane

R.T.: 5.194 min
 Delta R.T.: 0.003 min
 Response: 25369948
 Conc: 1.11 ng/ml



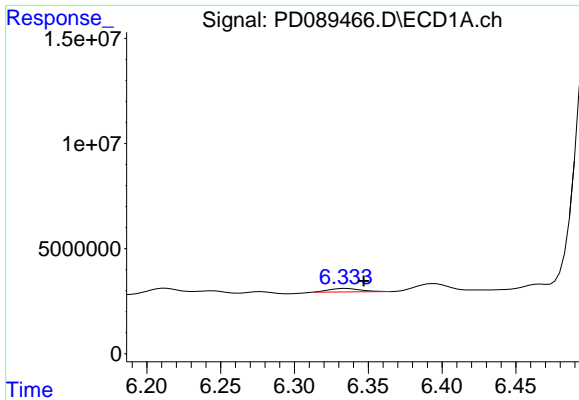
#12 4,4'-DDE

R.T.: 6.180 min
 Delta R.T.: -0.015 min
 Response: 28682
 Conc: 0.01 ng/ml



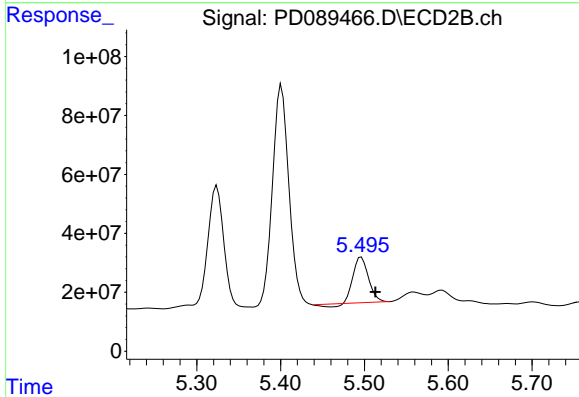
#12 4,4'-DDE

R.T.: 5.401 min
 Delta R.T.: 0.026 min
 Response: 829831393
 Conc: 36.21 ng/ml

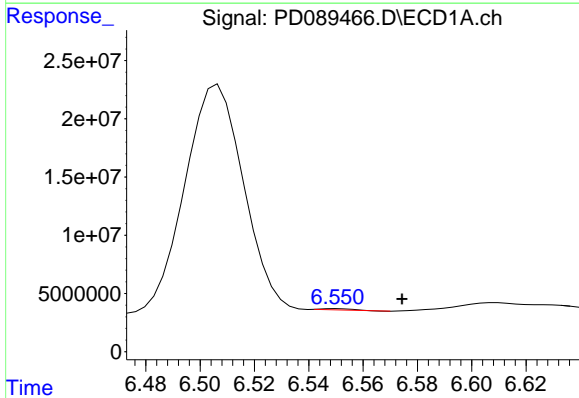


#13 Dieldrin
 R.T.: 6.334 min
 Delta R.T.: -0.012 min
 Response: 2429575
 Conc: 0.51 ng/ml

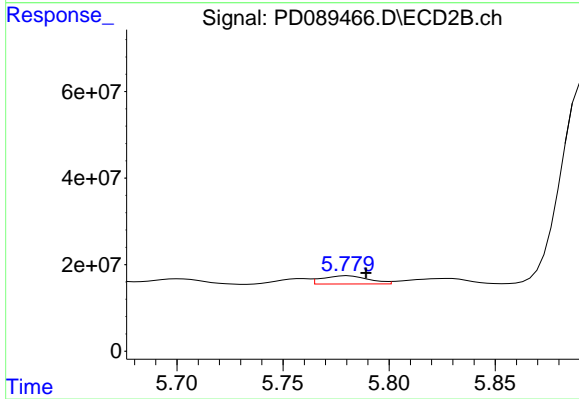
Instrument :
 ECD_D
 ClientSampleId :



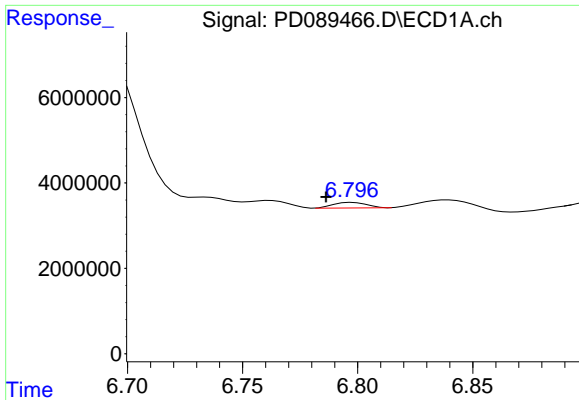
#13 Dieldrin
 R.T.: 5.496 min
 Delta R.T.: -0.017 min
 Response: 189248939
 Conc: 8.15 ng/ml



#14 Endrin
 R.T.: 6.551 min
 Delta R.T.: -0.024 min
 Response: 893745
 Conc: 0.22 ng/ml



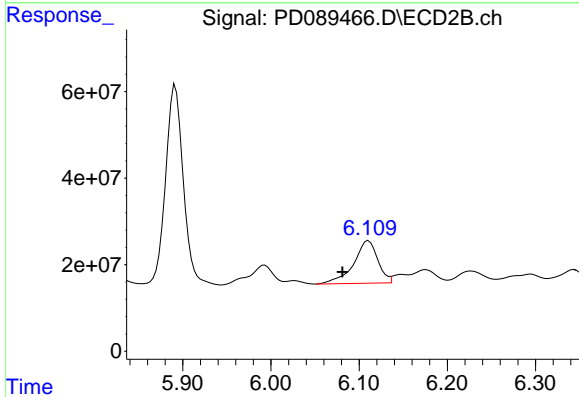
#14 Endrin
 R.T.: 5.781 min
 Delta R.T.: -0.008 min
 Response: 28998094
 Conc: 1.34 ng/ml



#15 Endosulfan II

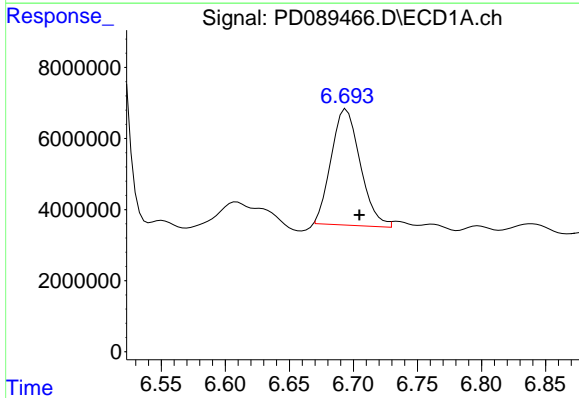
R.T.: 6.798 min
 Delta R.T.: 0.012 min
 Response: 1303868
 Conc: 0.32 ng/ml

Instrument :
 ECD_D
 ClientSampleId :



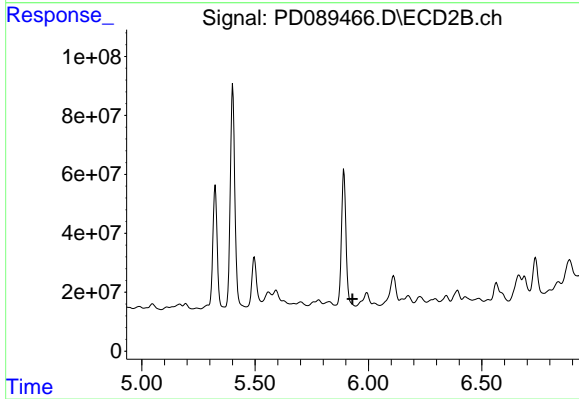
#15 Endosulfan II

R.T.: 6.111 min
 Delta R.T.: 0.030 min
 Response: 187382221
 Conc: 9.28 ng/ml



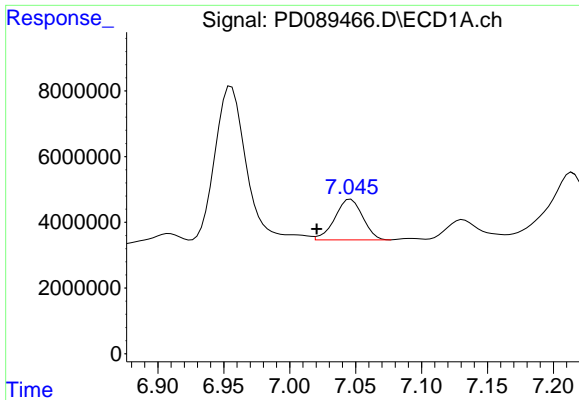
#16 4,4'-DDD

R.T.: 6.695 min
 Delta R.T.: -0.010 min
 Response: 51459761
 Conc: 14.99 ng/ml



#16 4,4'-DDD

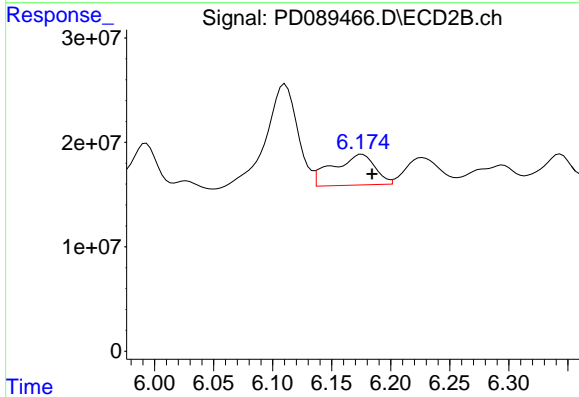
R.T.: 0.000 min
 Exp R.T. : 5.930 min
 Response: 0
 Conc: N.D.



#17 4,4'-DDT

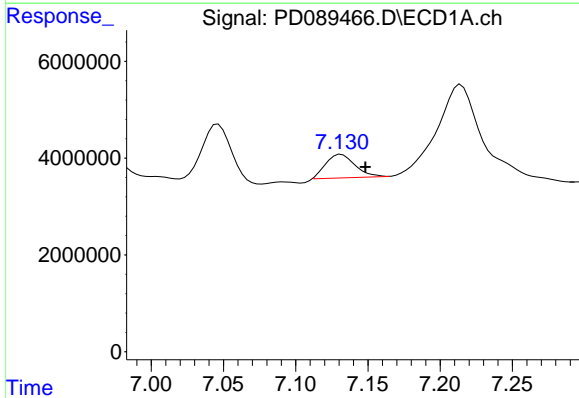
R.T.: 7.046 min
 Delta R.T.: 0.026 min
 Response: 18159078
 Conc: 4.79 ng/ml

Instrument :
 ECD_D
 ClientSampleId :



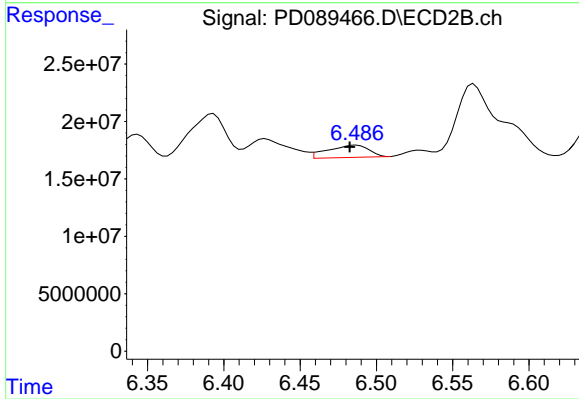
#17 4,4'-DDT

R.T.: 6.176 min
 Delta R.T.: -0.008 min
 Response: 72887753
 Conc: 3.59 ng/ml



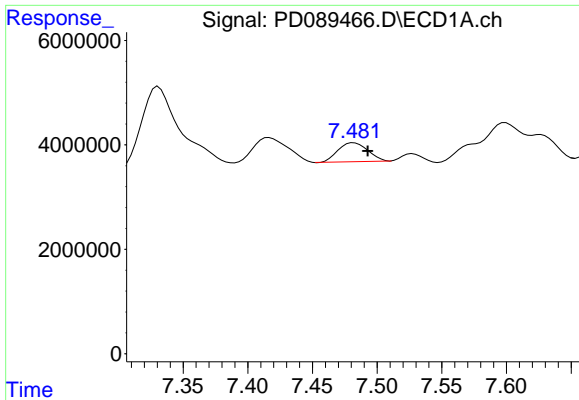
#19 Endosulfan Sulfate

R.T.: 7.132 min
 Delta R.T.: -0.017 min
 Response: 6856996
 Conc: 1.79 ng/ml



#19 Endosulfan Sulfate

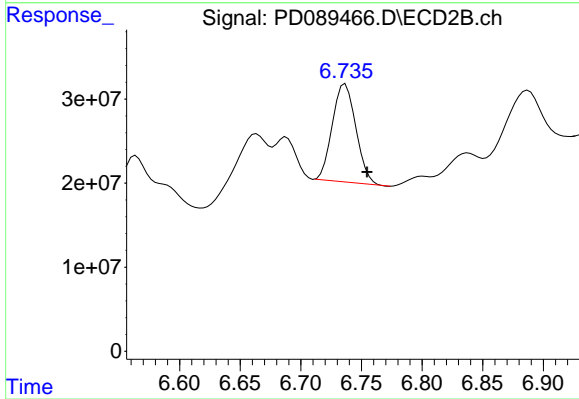
R.T.: 6.487 min
 Delta R.T.: 0.004 min
 Response: 19870874
 Conc: 1.01 ng/ml



#20 Methoxychlor

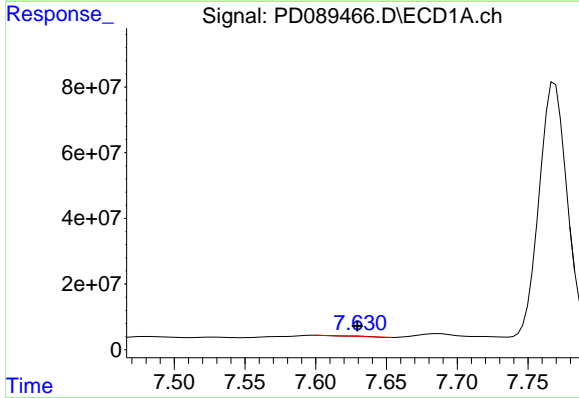
R.T.: 7.482 min
 Delta R.T.: -0.011 min
 Response: 5806723
 Conc: 2.87 ng/ml

Instrument :
 ECD_D
 ClientSampleId :



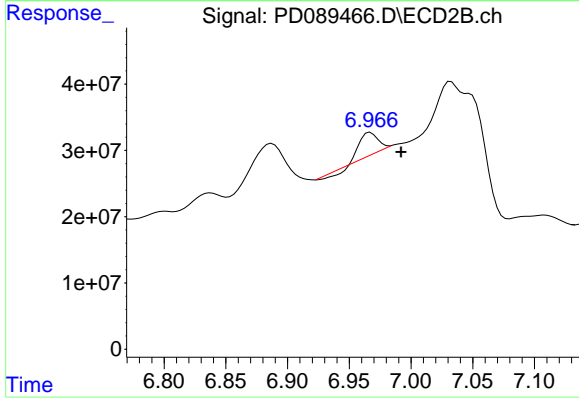
#20 Methoxychlor

R.T.: 6.737 min
 Delta R.T.: -0.018 min
 Response: 158125417
 Conc: 14.68 ng/ml



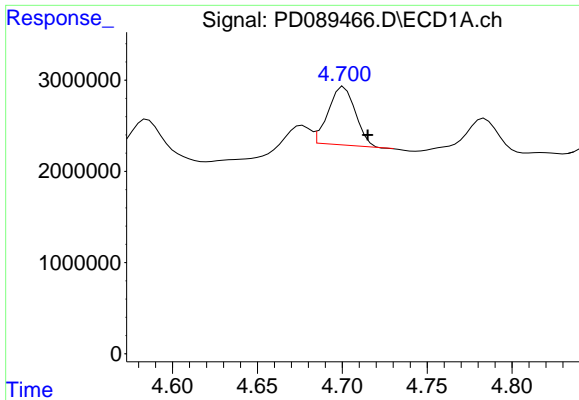
#21 Endrin ketone

R.T.: 7.626 min
 Delta R.T.: -0.003 min
 Response: 1713213
 Conc: 0.42 ng/ml



#21 Endrin ketone

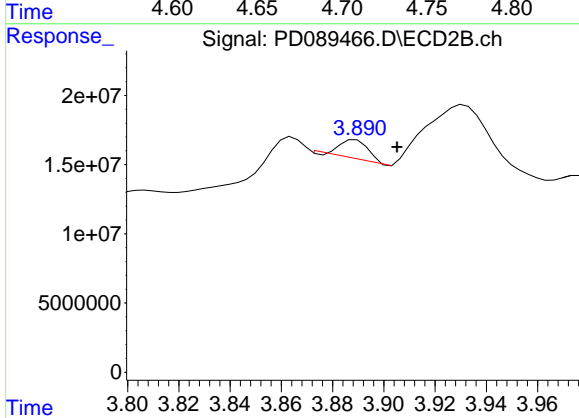
R.T.: 6.967 min
 Delta R.T.: -0.025 min
 Response: 26597290
 Conc: 1.23 ng/ml



#23 Chlordane-1

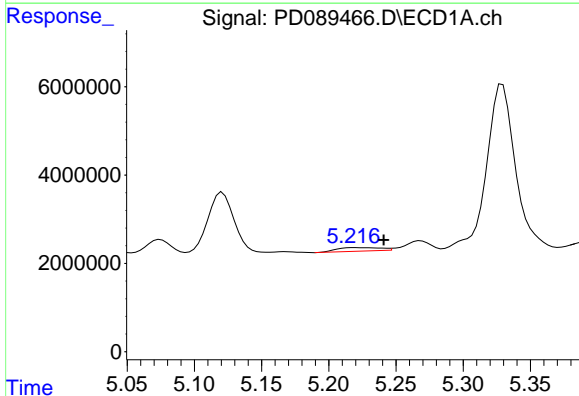
R.T.: 4.701 min
 Delta R.T.: -0.014 min
 Response: 7056096
 Conc: 32.97 ng/ml

Instrument :
 ECD_D
 ClientSampleId :



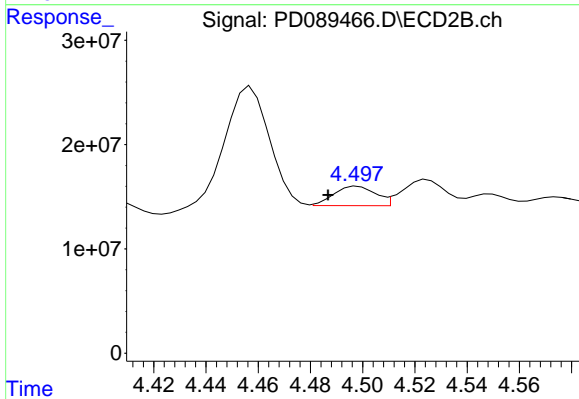
#23 Chlordane-1

R.T.: 3.889 min
 Delta R.T.: -0.016 min
 Response: 10169069
 Conc: 10.91 ng/ml



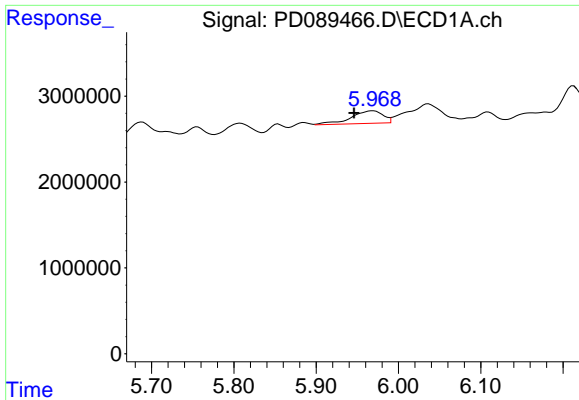
#24 Chlordane-2

R.T.: 5.219 min
 Delta R.T.: -0.022 min
 Response: 1870353
 Conc: 8.57 ng/ml



#24 Chlordane-2

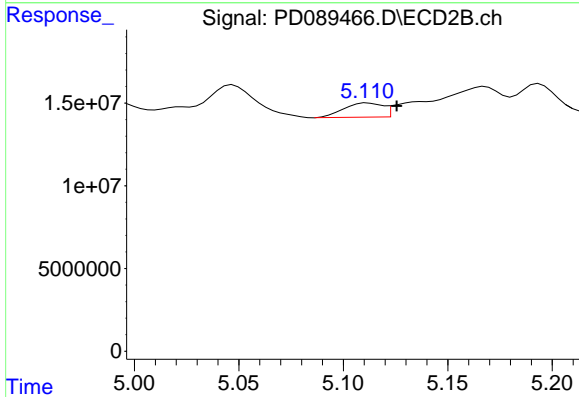
R.T.: 4.498 min
 Delta R.T.: 0.011 min
 Response: 20521306
 Conc: 21.56 ng/ml



#25 Chlordane-3

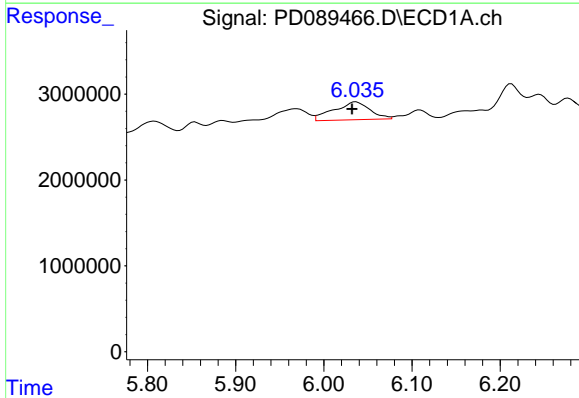
R.T.: 5.969 min
 Delta R.T.: 0.023 min
 Response: 3981131
 Conc: 4.62 ng/ml

Instrument :
 ECD_D
 ClientSampleId :



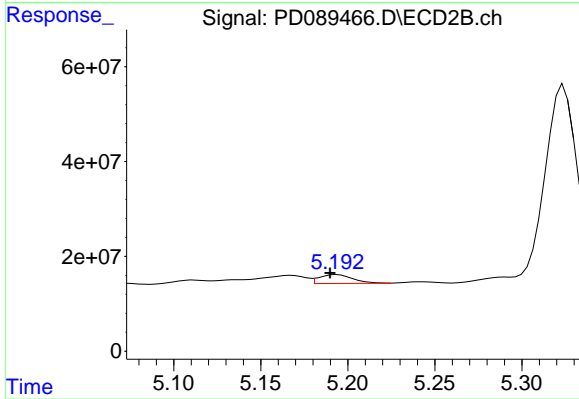
#25 Chlordane-3

R.T.: 5.112 min
 Delta R.T.: -0.014 min
 Response: 11101981
 Conc: 3.74 ng/ml



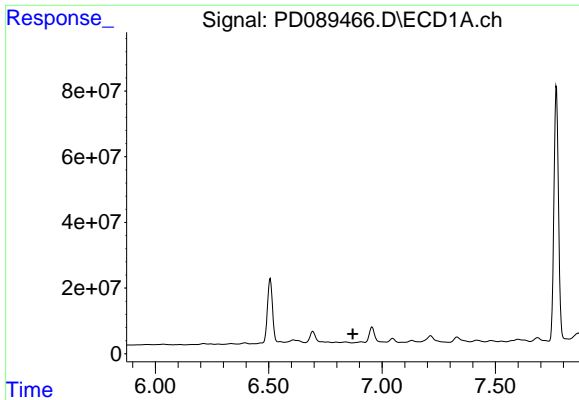
#26 Chlordane-4

R.T.: 6.036 min
 Delta R.T.: 0.005 min
 Response: 5928283
 Conc: 5.64 ng/ml



#26 Chlordane-4

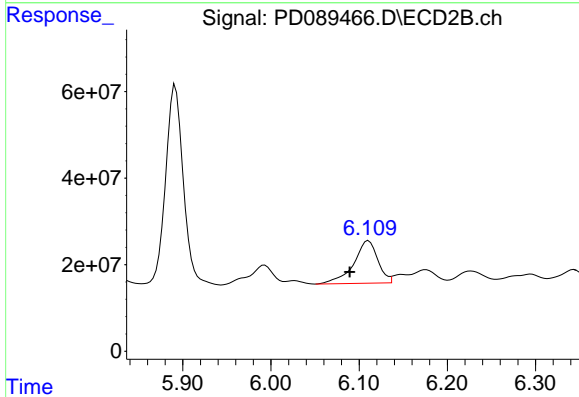
R.T.: 5.194 min
 Delta R.T.: 0.004 min
 Response: 25369948
 Conc: 10.12 ng/ml



#27 Chlordane-5

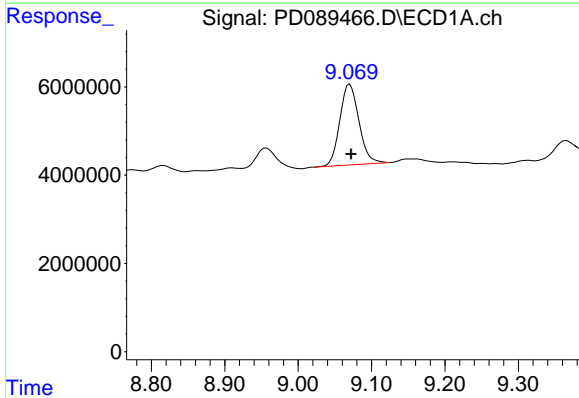
R.T.: 0.000 min
 Exp R.T.: 6.871 min
 Response: 0
 Conc: N.D.

Instrument :
 ECD_D
 ClientSampleId :



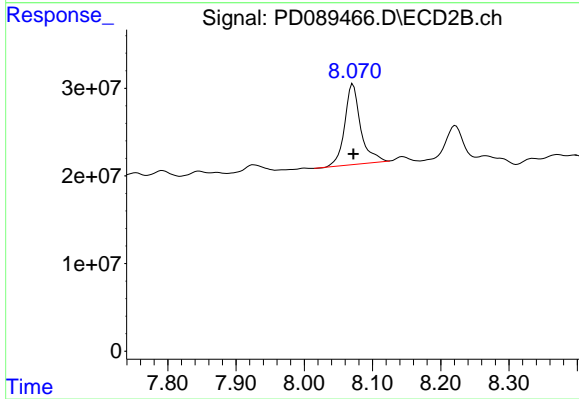
#27 Chlordane-5

R.T.: 6.111 min
 Delta R.T.: 0.021 min
 Response: 187382221
 Conc: 165.58 ng/ml



#28 Decachlorobiphenyl

R.T.: 9.070 min
 Delta R.T.: -0.002 min
 Response: 33007427
 Conc: 8.40 ng/ml



#28 Decachlorobiphenyl

R.T.: 8.071 min
 Delta R.T.: 0.000 min
 Response: 149377629
 Conc: 7.56 ng/ml