

Data Path : Z:\pestpcbsrv\HPCHEM1\ECD_D\Data\PD071125\
 Data File : PD089466.D
 Signal(s) : Signal #1: ECD1A.ch Signal #2: ECD2B.ch
 Acq On : 11 Jul 2025 15:58
 Operator : AR\AJ
 Sample : Q2565-05
 Misc :
 ALS Vial : 16 Sample Multiplier: 1

Instrument :
 ECD_D
 ClientSampleId :
 MOO-25-0180

Integration File signal 1: autoint1.e
 Integration File signal 2: autoint2.e
 Quant Time: Jul 11 22:54:28 2025
 Quant Method : Z:\pestpcbsrv\HPCHEM1\ECD_D\Method\PD061825.M
 Quant Title : GC Extractables
 QLast Update : Wed Jun 18 05:39:05 2025
 Response via : Initial Calibration
 Integrator: ChemStation

Volume Inj. : 1 µl
 Signal #1 Phase : ZB-MR2 Signal #2 Phase: ZB-MR2
 Signal #1 Info : 30M x 0.32mm x0.5 Signal #2 Info : 30M x 0.32mm x 0.25µm

	Compound	RT#1	RT#2	Resp#1	Resp#2	ng/ml	ng/ml

System Monitoring Compounds							
1)	SA Tetrachlo...	3.549	2.897	34117090	6858.7E6	11.958	404.568 #
2)	SA Decachlor...	9.070	8.071	33007427	149.4E6	8.404	7.556
Target Compounds							
2)	A alpha-BHC	3.982f	3.386	16095033	36841066	2.761	1.375 #
3)	MA gamma-BHC...	4.336	3.746f	2758284	271044	0.494	0.011 #
4)	MA Heptachlor	4.956f	4.079	4771928	2649930	0.875	0.106 #
5)	MB Aldrin	5.268	4.367	2337275	52469840	0.440	2.167 #
6)	B beta-BHC	4.520	4.023	1251290	104.1E6	0.567	9.691 #
7)	B delta-BHC	4.784f	4.257	2305722	21414557	0.449	0.861 #
8)	B Heptachlo...	5.688	4.877	1839106	23224096	0.381	1.061 #
9)	A Endosulfan I	0.000	5.243	0	3461346	N.D.	0.166 #
10)	B gamma-Chl...	5.969f	5.112	3981131	11101981	0.831	0.464 #
11)	B alpha-Chl...	6.036	5.194	5928283	25369948	1.225	1.108
12)	B 4,4'-DDE	6.180f	5.401f	28682	829.8E6	0.007	36.212 #
13)	MA Dieldrin	6.334	5.496f	2429575	189.2E6	0.506	8.154 #
14)	MA Endrin	6.551f	5.781	893745	28998094	0.217	1.335 #
15)	B Endosulfa...	6.798	6.111f	1303868	187.4E6	0.323	9.278 #
16)	A 4,4'-DDD	6.695	0.000	51459761	0	14.994	N.D. #
17)	MA 4,4'-DDT	7.046f	6.176	18159078	72887753	4.794	3.594 #
19)	B Endosulfa...	7.132f	6.487	6856996	19870874	1.787	1.013 #
20)	A Methoxychlor	7.482	6.737f	5806723	158.1E6	2.874	14.685 #
21)	B Endrin ke...	7.626	6.967f	1713213	26597290	0.421	1.231 #
23)	Chlordane-1	4.701	3.889	7056096	10169069	32.969	10.908 #
24)	Chlordane-2	5.219f	4.498	1870353	20521306	8.567	21.565 #
25)	Chlordane-3	5.969f	5.112	3981131	11101981	4.616	3.738
26)	Chlordane-4	6.036	5.194	5928283	25369948	5.642	10.121 #
27)	Chlordane-5	0.000	6.111f	0	187.4E6	N.D.	165.582 #

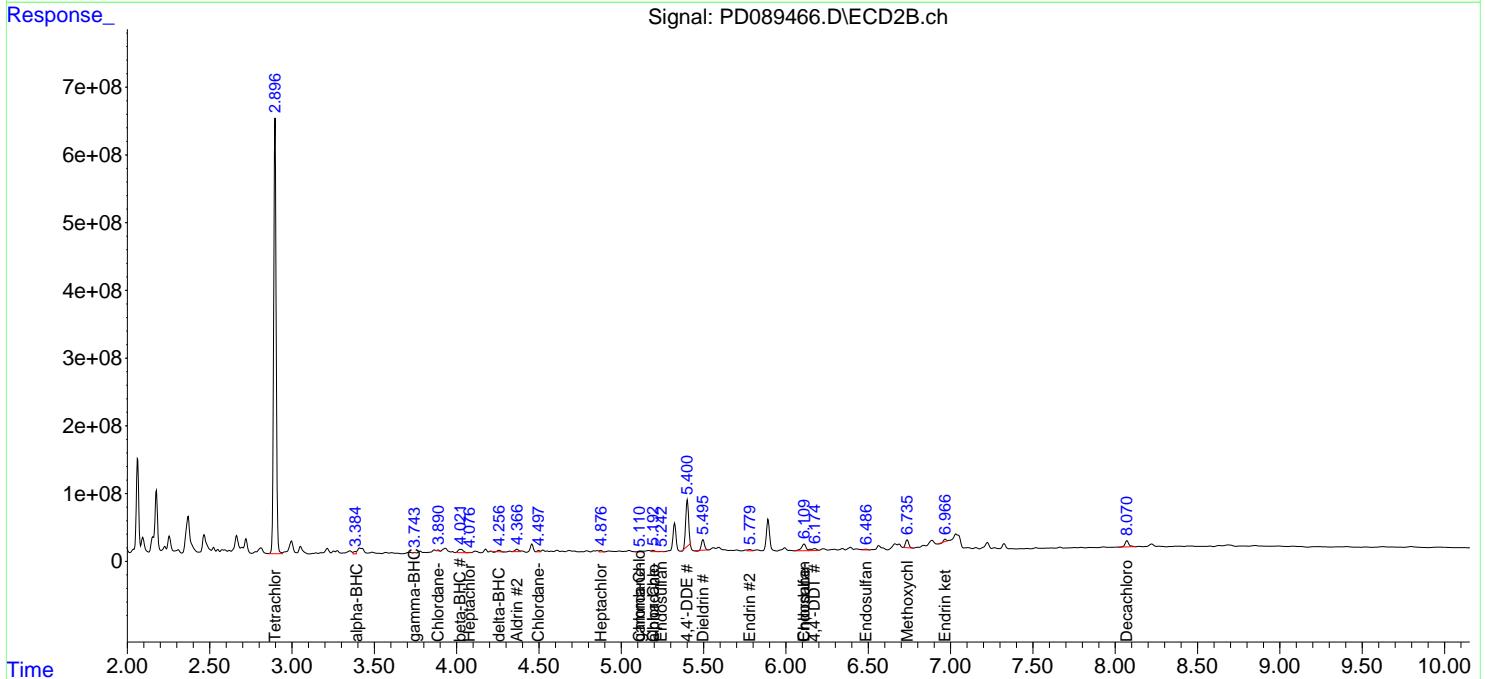
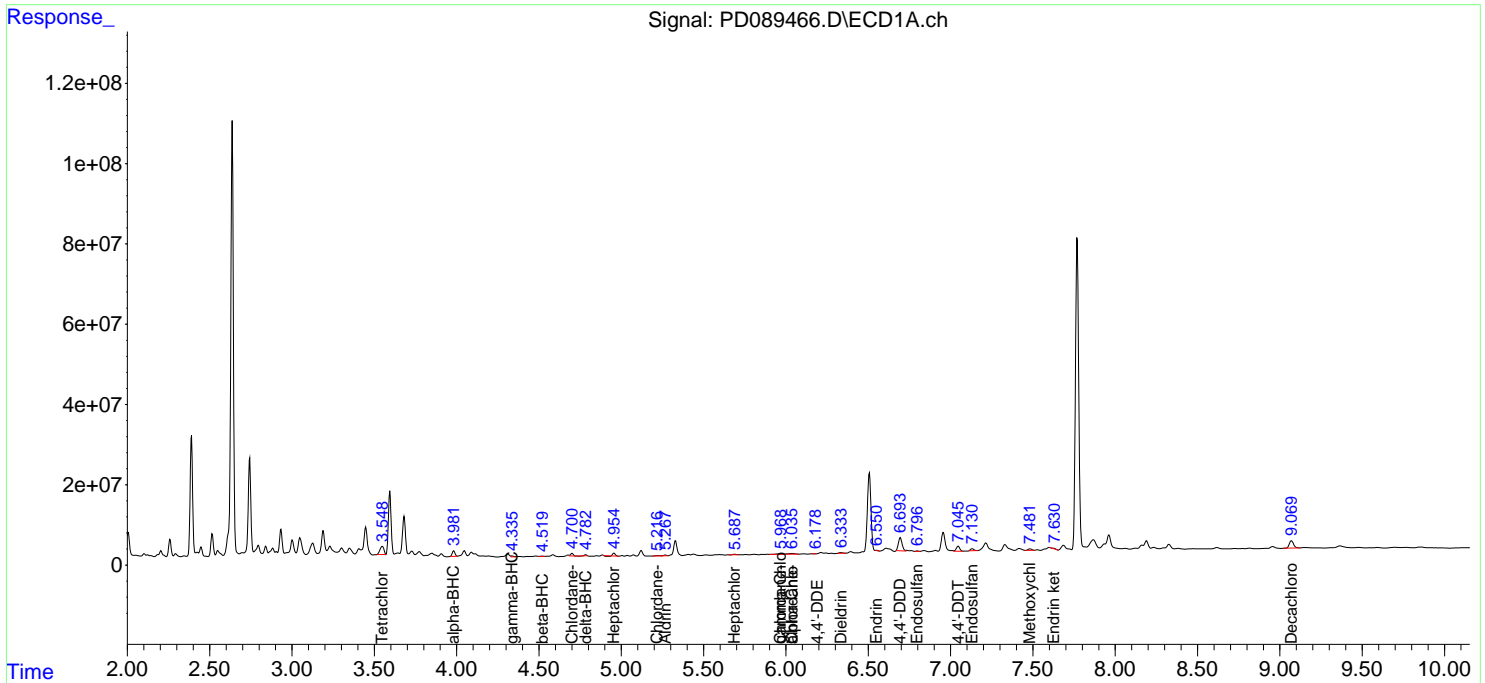
(f)=RT Delta > 1/2 Window (#)=Amounts differ by > 25% (m)=manual int.

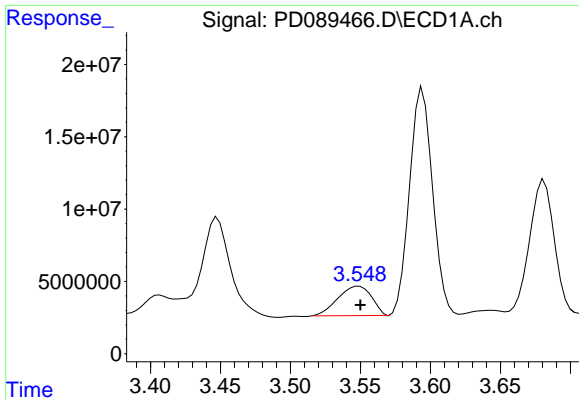
Data Path : Z:\pestpcbsrv\HPCHEM1\ECD_D\Data\PD071125\
 Data File : PD089466.D
 Signal(s) : Signal #1: ECD1A.ch Signal #2: ECD2B.ch
 Acq On : 11 Jul 2025 15:58
 Operator : AR\AJ
 Sample : Q2565-05
 Misc :
 ALS Vial : 16 Sample Multiplier: 1

Instrument :
 ECD_D
ClientSampleId :
 MOO-25-0180

Integration File signal 1: autoint1.e
 Integration File signal 2: autoint2.e
 Quant Time: Jul 11 22:54:28 2025
 Quant Method : Z:\pestpcbsrv\HPCHEM1\ECD_D\Method\PD061825.M
 Quant Title : GC Extractables
 QLast Update : Wed Jun 18 05:39:05 2025
 Response via : Initial Calibration
 Integrator: ChemStation

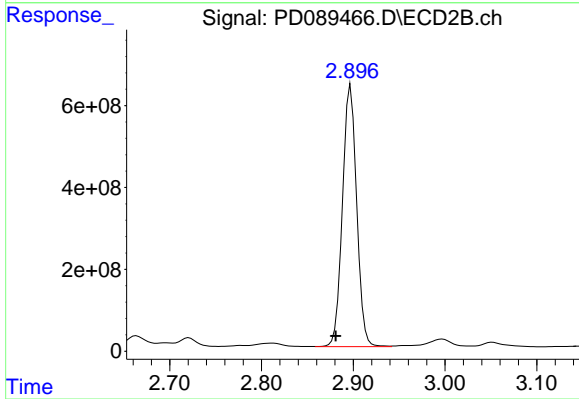
Volume Inj. : 1 µl
 Signal #1 Phase : ZB-MR1 Signal #2 Phase: ZB-MR2
 Signal #1 Info : 30M x 0.32mm x0.5 Signal #2 Info : 30M x 0.32mm x 0.25µm



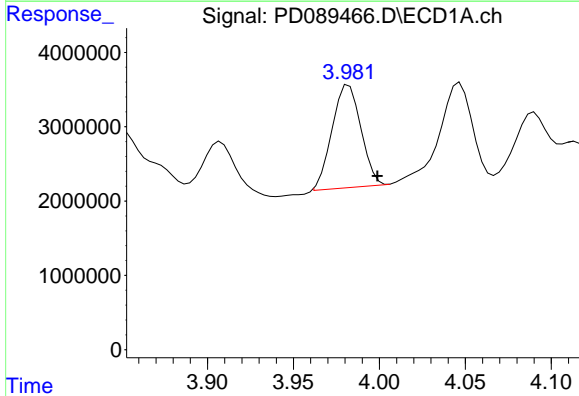


#1 Tetrachloro-m-xylene
 R.T.: 3.549 min
 Delta R.T.: -0.001 min
 Response: 34117090
 Conc: 11.96 ng/ml

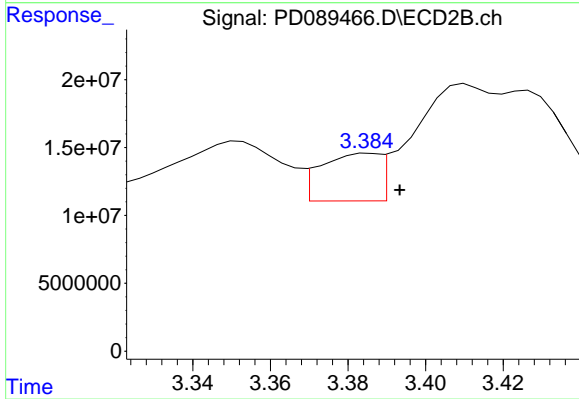
Instrument :
 ECD_D
 ClientSampleId :
 MOO-25-0180



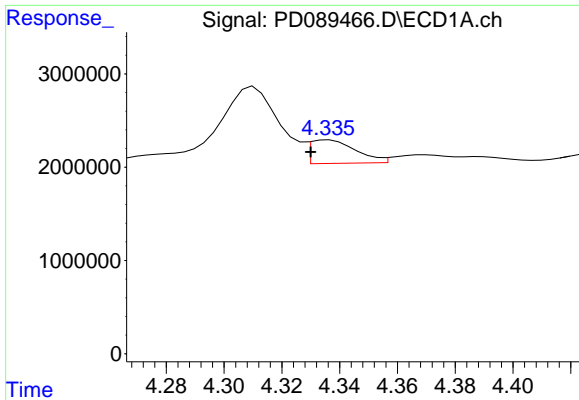
#1 Tetrachloro-m-xylene
 R.T.: 2.897 min
 Delta R.T.: 0.016 min
 Response: 6858718491
 Conc: 404.57 ng/ml



#2 alpha-BHC
 R.T.: 3.982 min
 Delta R.T.: -0.017 min
 Response: 16095033
 Conc: 2.76 ng/ml



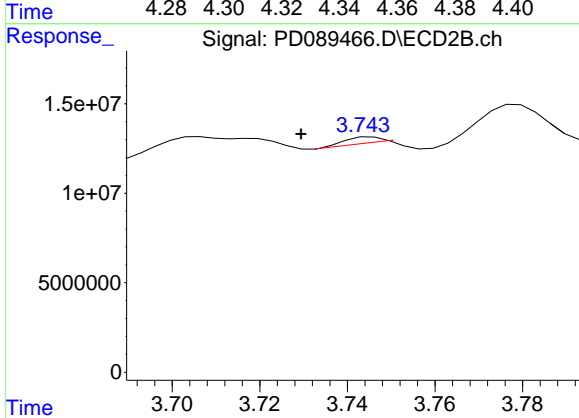
#2 alpha-BHC
 R.T.: 3.386 min
 Delta R.T.: -0.007 min
 Response: 36841066
 Conc: 1.37 ng/ml



#3 gamma-BHC (Lindane)

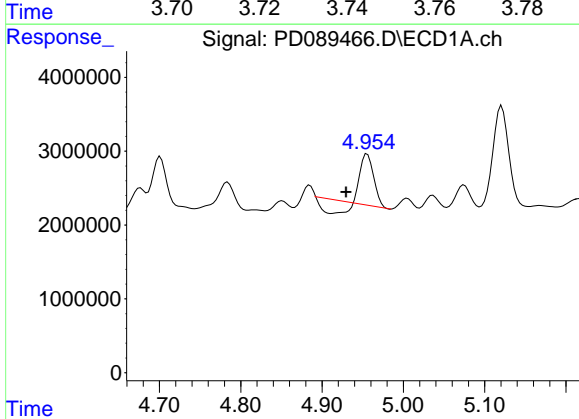
R.T.: 4.336 min
 Delta R.T.: 0.006 min
 Response: 2758284
 Conc: 0.49 ng/ml

Instrument :
 ECD_D
 ClientSampleId :
 MOO-25-0180



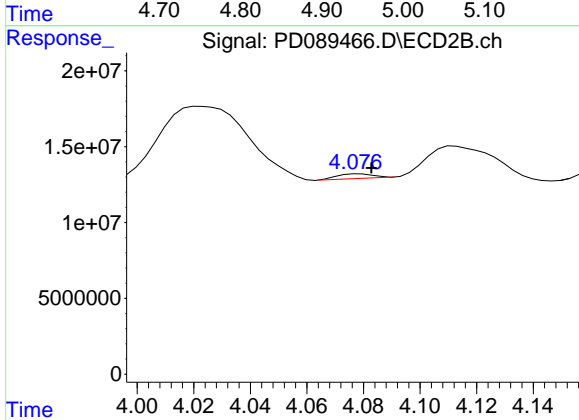
#3 gamma-BHC (Lindane)

R.T.: 3.746 min
 Delta R.T.: 0.016 min
 Response: 271044
 Conc: 0.01 ng/ml



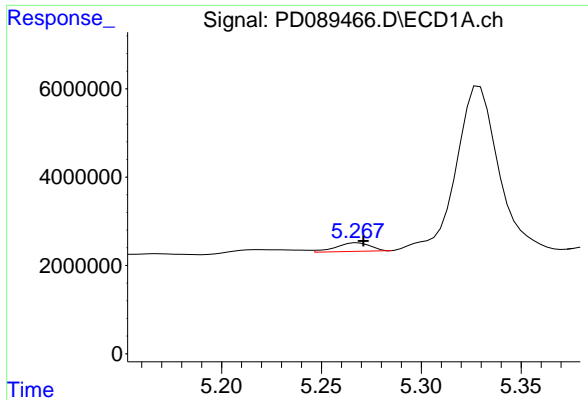
#4 Heptachlor

R.T.: 4.956 min
 Delta R.T.: 0.026 min
 Response: 4771928
 Conc: 0.88 ng/ml



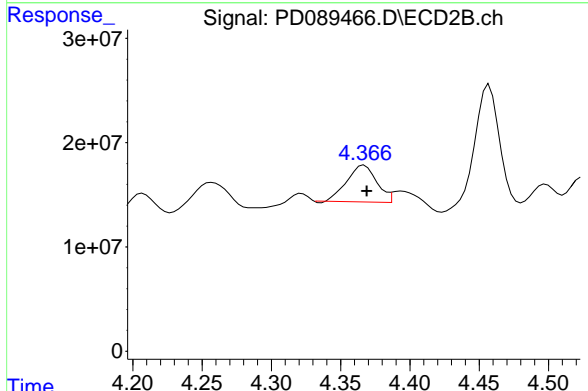
#4 Heptachlor

R.T.: 4.079 min
 Delta R.T.: -0.004 min
 Response: 2649930
 Conc: 0.11 ng/ml

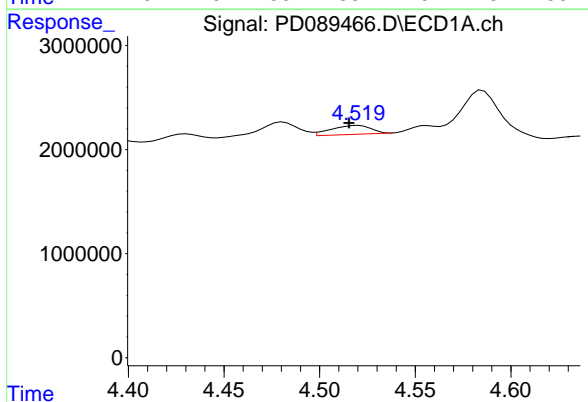


#5 Aldrin
 R.T.: 5.268 min
 Delta R.T.: -0.003 min
 Response: 2337275
 Conc: 0.44 ng/ml

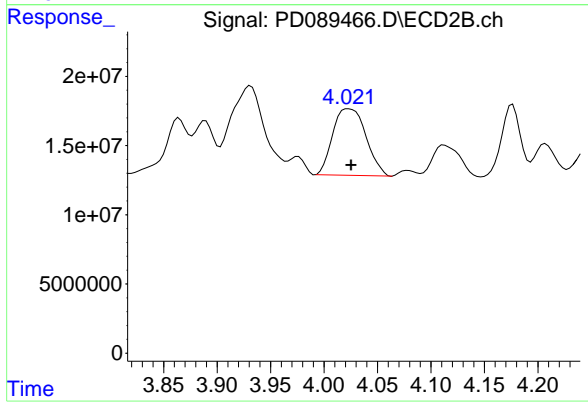
Instrument :
 ECD_D
 ClientSampleId :
 MOO-25-0180



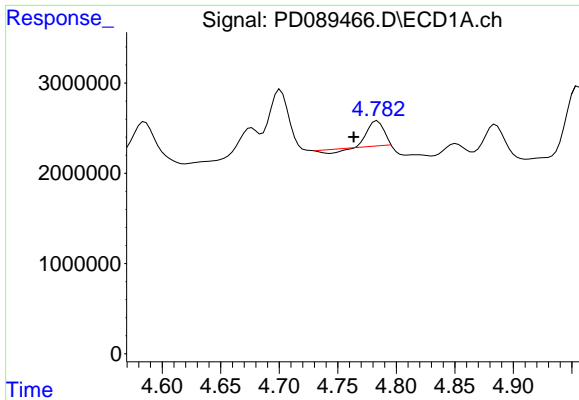
#5 Aldrin
 R.T.: 4.367 min
 Delta R.T.: -0.002 min
 Response: 52469840
 Conc: 2.17 ng/ml



#6 beta-BHC
 R.T.: 4.520 min
 Delta R.T.: 0.005 min
 Response: 1251290
 Conc: 0.57 ng/ml



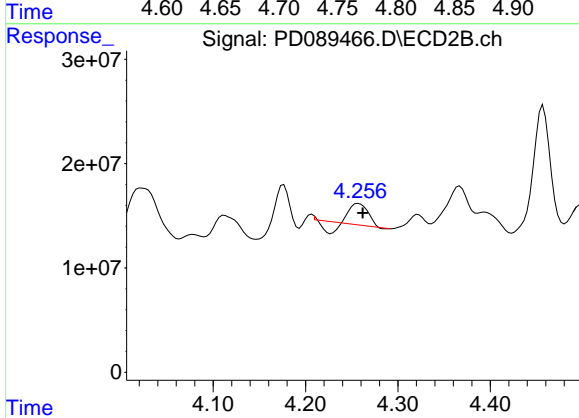
#6 beta-BHC
 R.T.: 4.023 min
 Delta R.T.: -0.002 min
 Response: 104139795
 Conc: 9.69 ng/ml



#7 delta-BHC

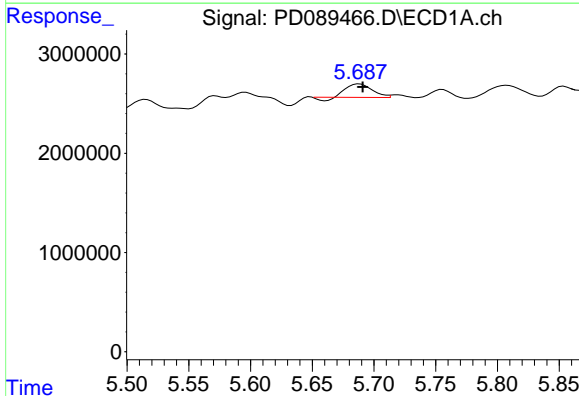
R.T.: 4.784 min
 Delta R.T.: 0.020 min
 Response: 2305722
 Conc: 0.45 ng/ml

Instrument :
 ECD_D
 ClientSampleId :
 MOO-25-0180



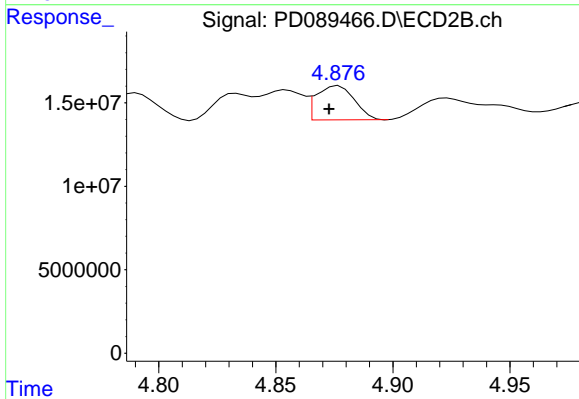
#7 delta-BHC

R.T.: 4.257 min
 Delta R.T.: -0.005 min
 Response: 21414557
 Conc: 0.86 ng/ml



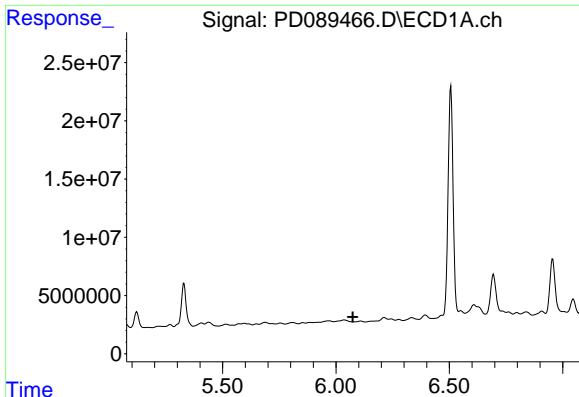
#8 Heptachlor epoxide

R.T.: 5.688 min
 Delta R.T.: -0.002 min
 Response: 1839106
 Conc: 0.38 ng/ml



#8 Heptachlor epoxide

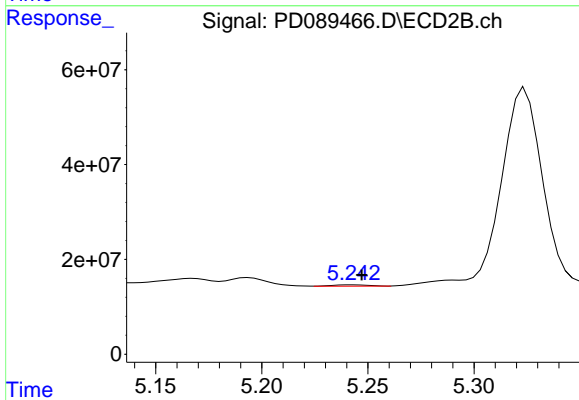
R.T.: 4.877 min
 Delta R.T.: 0.004 min
 Response: 23224096
 Conc: 1.06 ng/ml



#9 Endosulfan I

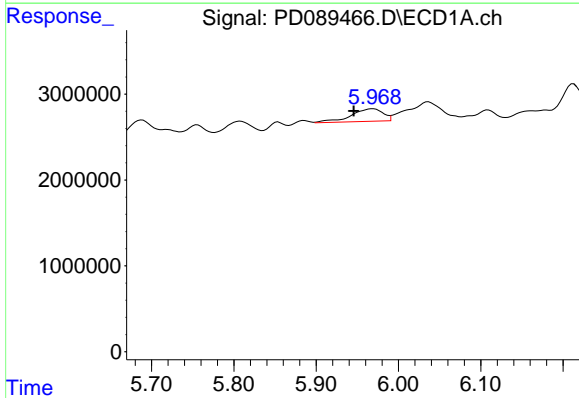
R.T.: 0.000 min
 Exp R.T.: 6.074 min
 Response: 0
 Conc: N.D.

Instrument :
 ECD_D
 ClientSampleId :
 MOO-25-0180



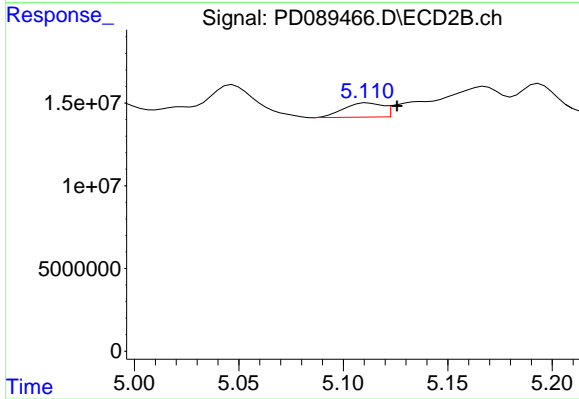
#9 Endosulfan I

R.T.: 5.243 min
 Delta R.T.: -0.004 min
 Response: 3461346
 Conc: 0.17 ng/ml



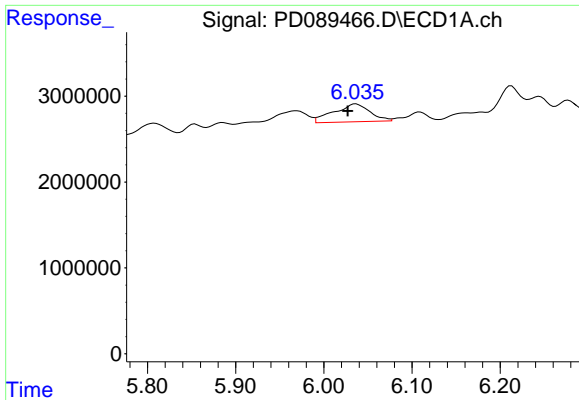
#10 gamma-Chlordane

R.T.: 5.969 min
 Delta R.T.: 0.024 min
 Response: 3981131
 Conc: 0.83 ng/ml



#10 gamma-Chlordane

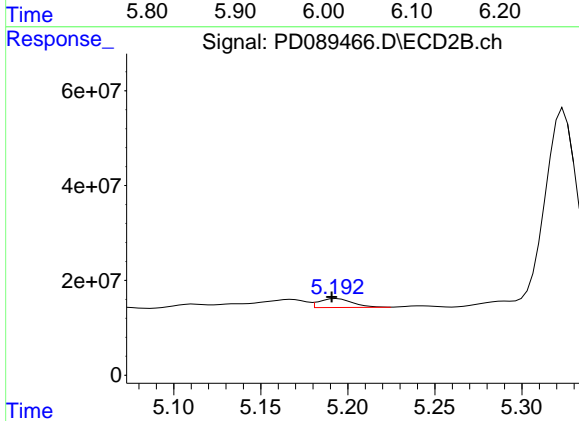
R.T.: 5.112 min
 Delta R.T.: -0.014 min
 Response: 11101981
 Conc: 0.46 ng/ml



#11 alpha-Chlordane

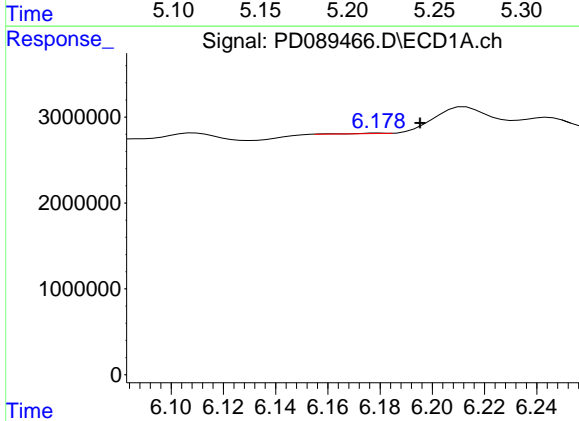
R.T.: 6.036 min
 Delta R.T.: 0.010 min
 Response: 5928283
 Conc: 1.23 ng/ml

Instrument : ECD_D
 ClientSampleId : MOO-25-0180



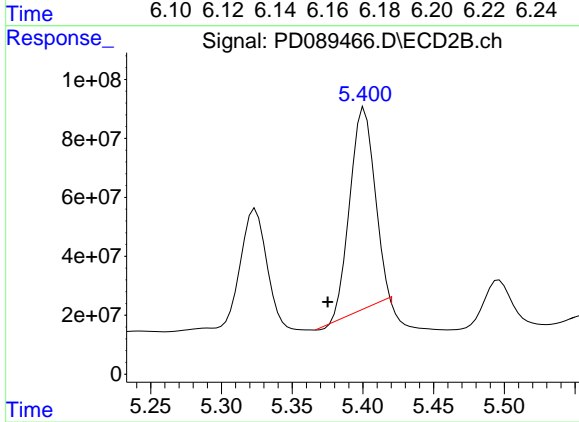
#11 alpha-Chlordane

R.T.: 5.194 min
 Delta R.T.: 0.003 min
 Response: 25369948
 Conc: 1.11 ng/ml



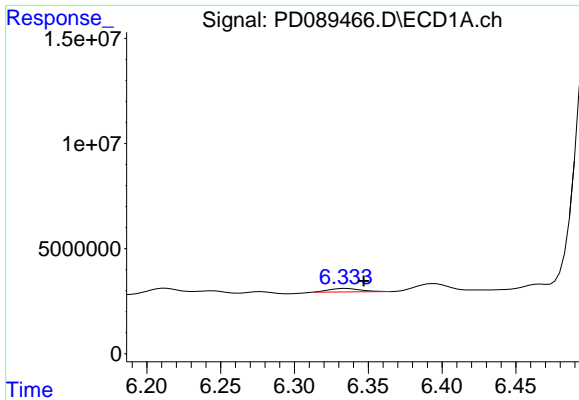
#12 4,4'-DDE

R.T.: 6.180 min
 Delta R.T.: -0.015 min
 Response: 28682
 Conc: 0.01 ng/ml



#12 4,4'-DDE

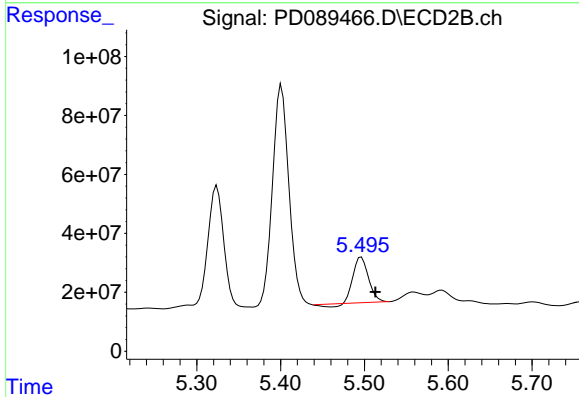
R.T.: 5.401 min
 Delta R.T.: 0.026 min
 Response: 829831393
 Conc: 36.21 ng/ml



#13 Dieldrin

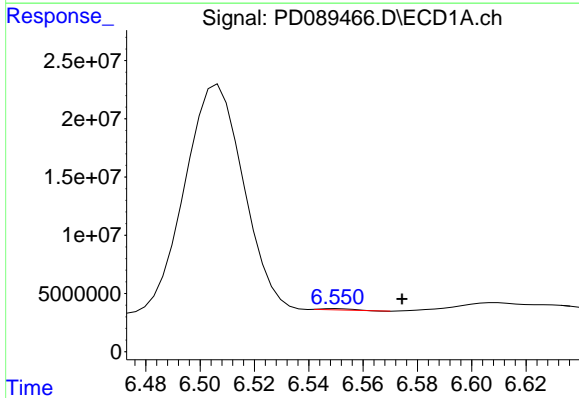
R.T.: 6.334 min
 Delta R.T.: -0.012 min
 Response: 2429575
 Conc: 0.51 ng/ml

Instrument : ECD_D
 ClientSampleId : MOO-25-0180



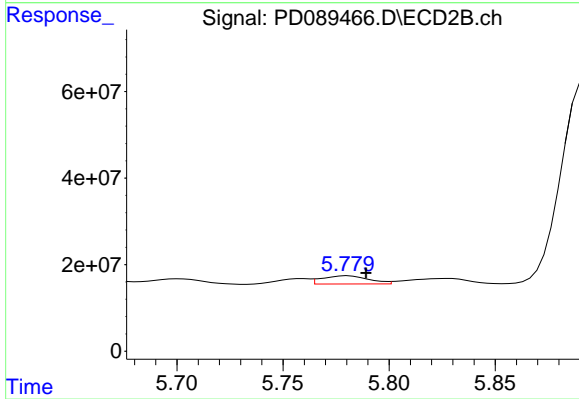
#13 Dieldrin

R.T.: 5.496 min
 Delta R.T.: -0.017 min
 Response: 189248939
 Conc: 8.15 ng/ml



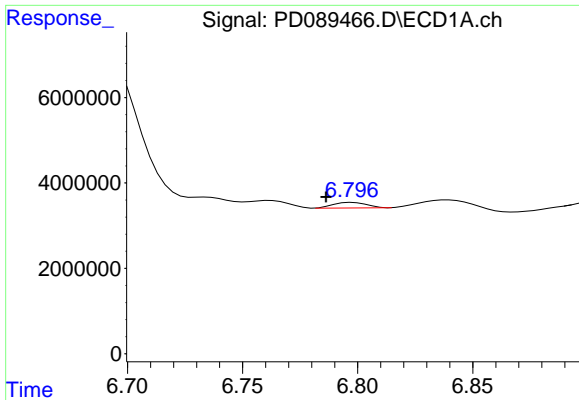
#14 Endrin

R.T.: 6.551 min
 Delta R.T.: -0.024 min
 Response: 893745
 Conc: 0.22 ng/ml



#14 Endrin

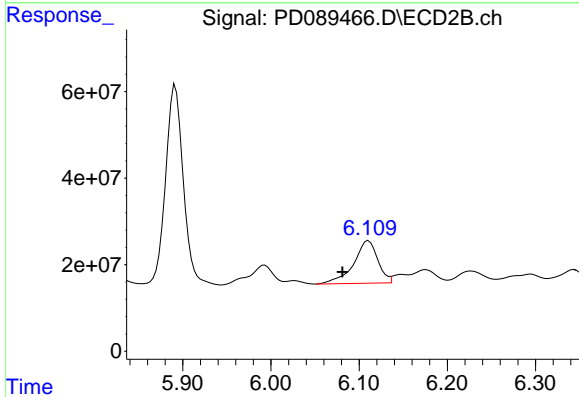
R.T.: 5.781 min
 Delta R.T.: -0.008 min
 Response: 28998094
 Conc: 1.34 ng/ml



#15 Endosulfan II

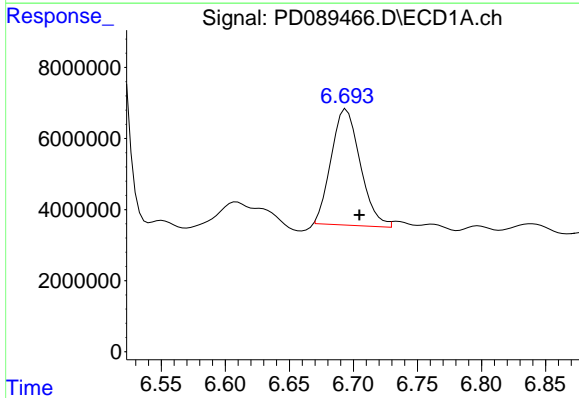
R.T.: 6.798 min
 Delta R.T.: 0.012 min
 Response: 1303868
 Conc: 0.32 ng/ml

Instrument :
 ECD_D
 ClientSampleId :
 MOO-25-0180



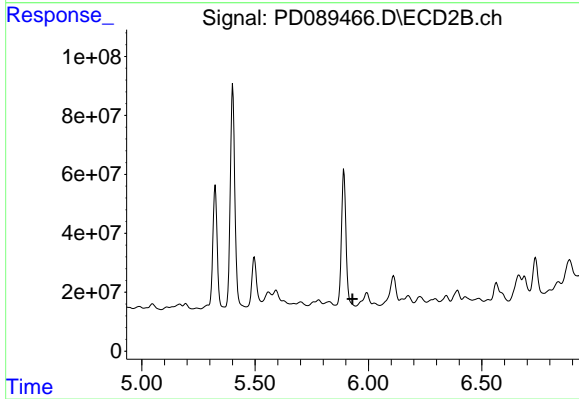
#15 Endosulfan II

R.T.: 6.111 min
 Delta R.T.: 0.030 min
 Response: 187382221
 Conc: 9.28 ng/ml



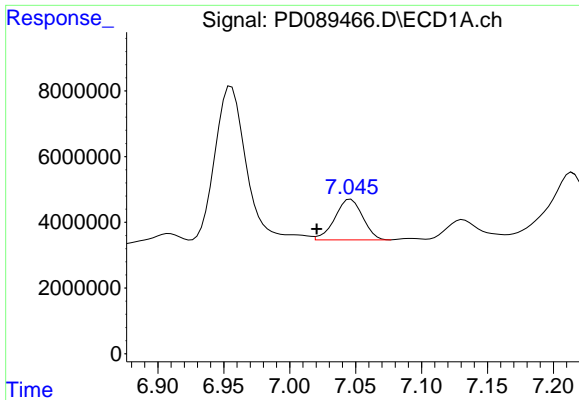
#16 4,4'-DDD

R.T.: 6.695 min
 Delta R.T.: -0.010 min
 Response: 51459761
 Conc: 14.99 ng/ml



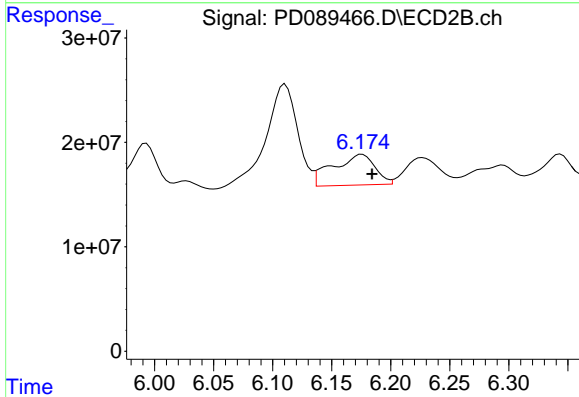
#16 4,4'-DDD

R.T.: 0.000 min
 Exp R.T.: 5.930 min
 Response: 0
 Conc: N.D.

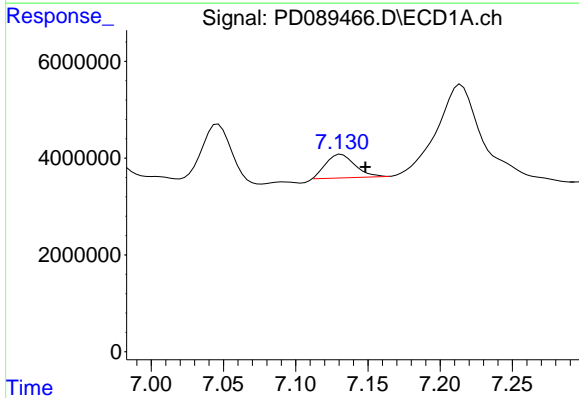


#17 4,4'-DDT
 R.T.: 7.046 min
 Delta R.T.: 0.026 min
 Response: 18159078
 Conc: 4.79 ng/ml

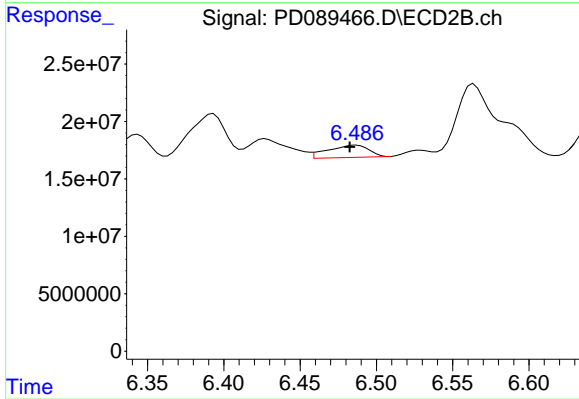
Instrument :
 ECD_D
 ClientSampleId :
 MOO-25-0180



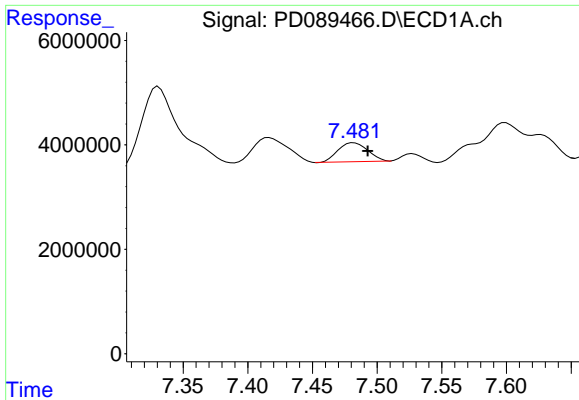
#17 4,4'-DDT
 R.T.: 6.176 min
 Delta R.T.: -0.008 min
 Response: 72887753
 Conc: 3.59 ng/ml



#19 Endosulfan Sulfate
 R.T.: 7.132 min
 Delta R.T.: -0.017 min
 Response: 6856996
 Conc: 1.79 ng/ml



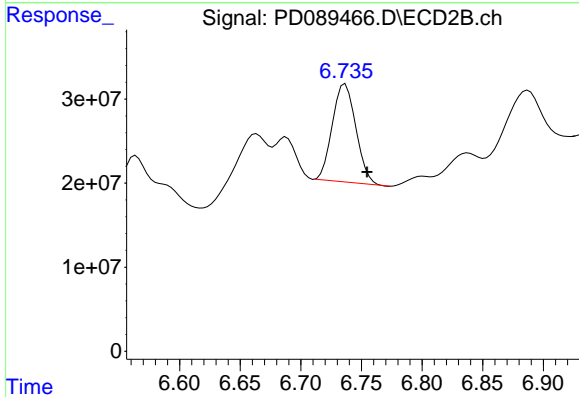
#19 Endosulfan Sulfate
 R.T.: 6.487 min
 Delta R.T.: 0.004 min
 Response: 19870874
 Conc: 1.01 ng/ml



#20 Methoxychlor

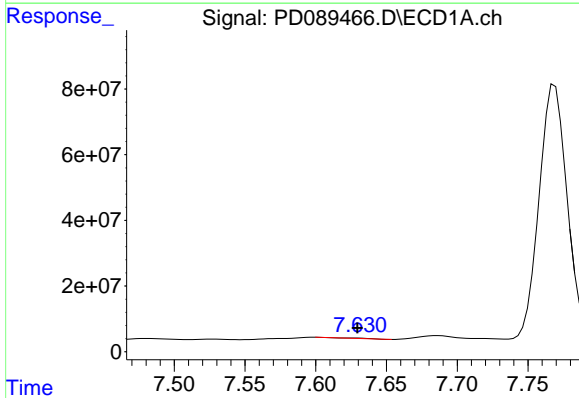
R.T.: 7.482 min
 Delta R.T.: -0.011 min
 Response: 5806723
 Conc: 2.87 ng/ml

Instrument :
 ECD_D
 ClientSampleId :
 MOO-25-0180



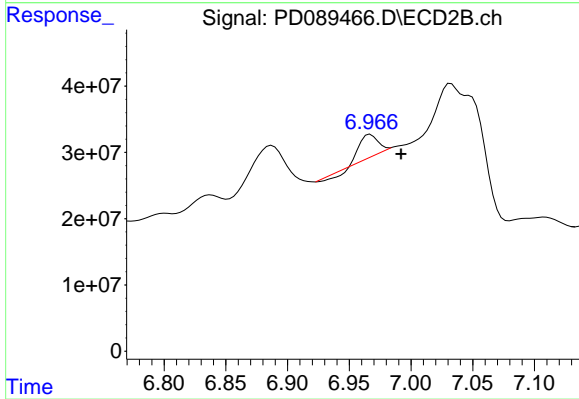
#20 Methoxychlor

R.T.: 6.737 min
 Delta R.T.: -0.018 min
 Response: 158125417
 Conc: 14.68 ng/ml



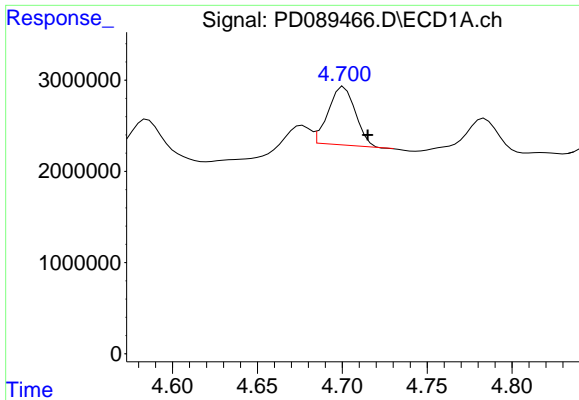
#21 Endrin ketone

R.T.: 7.626 min
 Delta R.T.: -0.003 min
 Response: 1713213
 Conc: 0.42 ng/ml



#21 Endrin ketone

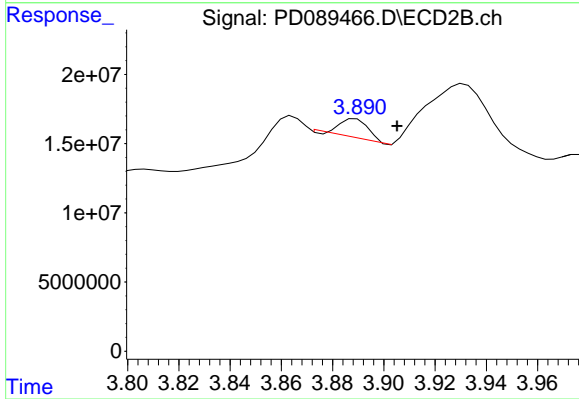
R.T.: 6.967 min
 Delta R.T.: -0.025 min
 Response: 26597290
 Conc: 1.23 ng/ml



#23 Chlordane-1

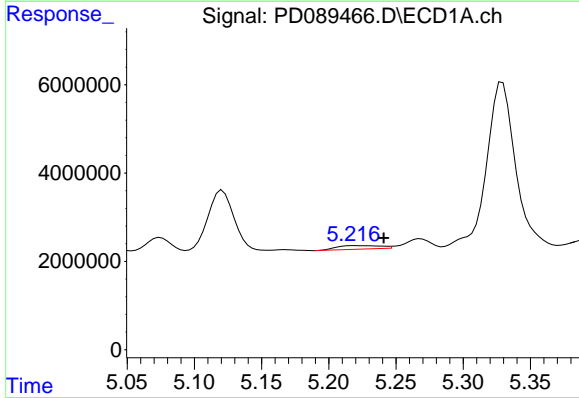
R.T.: 4.701 min
 Delta R.T.: -0.014 min
 Response: 7056096
 Conc: 32.97 ng/ml

Instrument :
 ECD_D
 ClientSampleId :
 MOO-25-0180



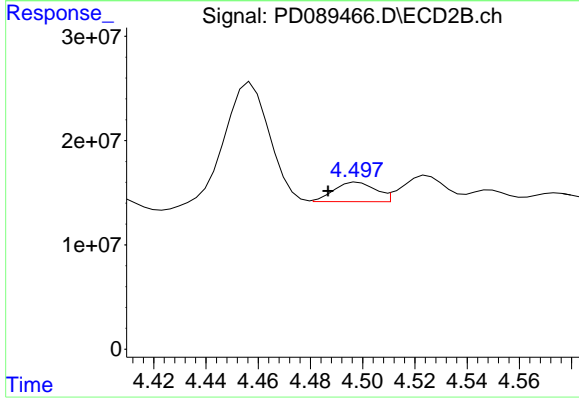
#23 Chlordane-1

R.T.: 3.889 min
 Delta R.T.: -0.016 min
 Response: 10169069
 Conc: 10.91 ng/ml



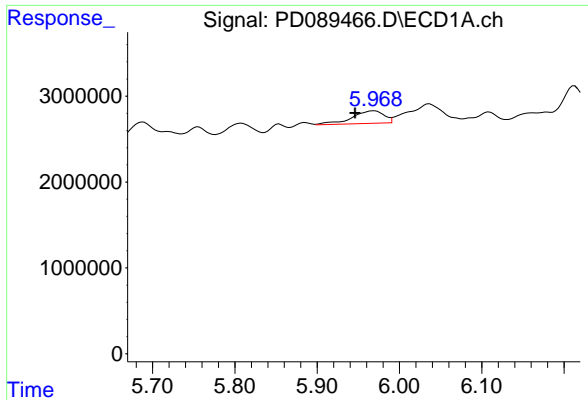
#24 Chlordane-2

R.T.: 5.219 min
 Delta R.T.: -0.022 min
 Response: 1870353
 Conc: 8.57 ng/ml



#24 Chlordane-2

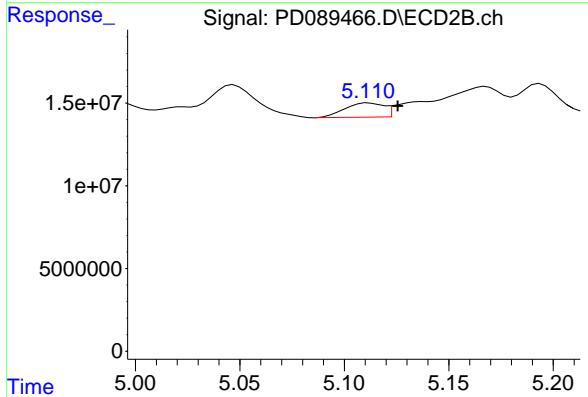
R.T.: 4.498 min
 Delta R.T.: 0.011 min
 Response: 20521306
 Conc: 21.56 ng/ml



#25 Chlordane-3

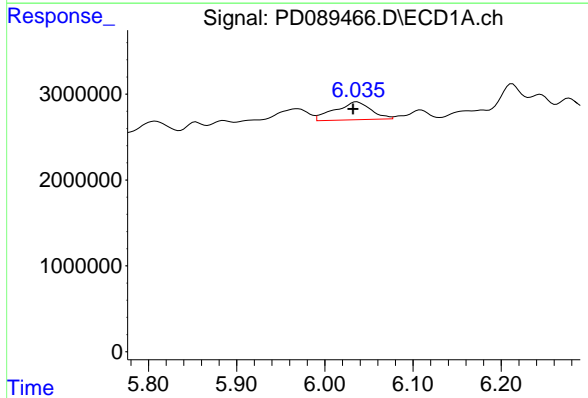
R.T.: 5.969 min
 Delta R.T.: 0.023 min
 Response: 3981131
 Conc: 4.62 ng/ml

Instrument : ECD_D
 ClientSampleId : MOO-25-0180



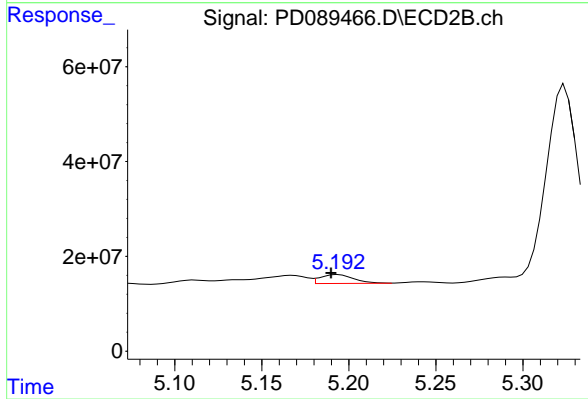
#25 Chlordane-3

R.T.: 5.112 min
 Delta R.T.: -0.014 min
 Response: 11101981
 Conc: 3.74 ng/ml



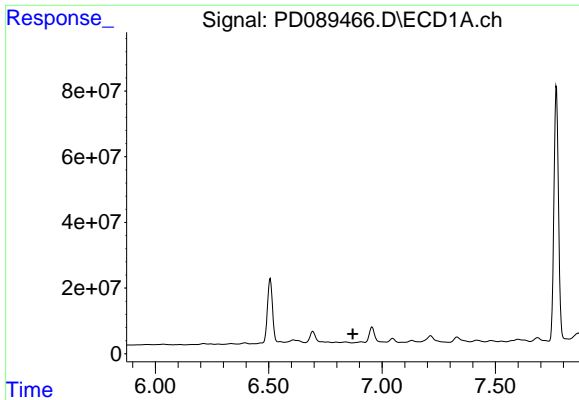
#26 Chlordane-4

R.T.: 6.036 min
 Delta R.T.: 0.005 min
 Response: 5928283
 Conc: 5.64 ng/ml



#26 Chlordane-4

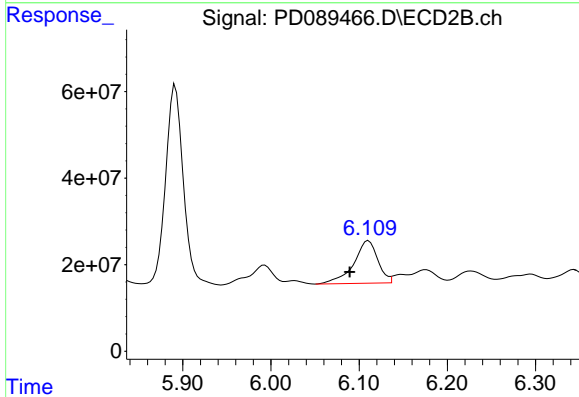
R.T.: 5.194 min
 Delta R.T.: 0.004 min
 Response: 25369948
 Conc: 10.12 ng/ml



#27 Chlordane-5

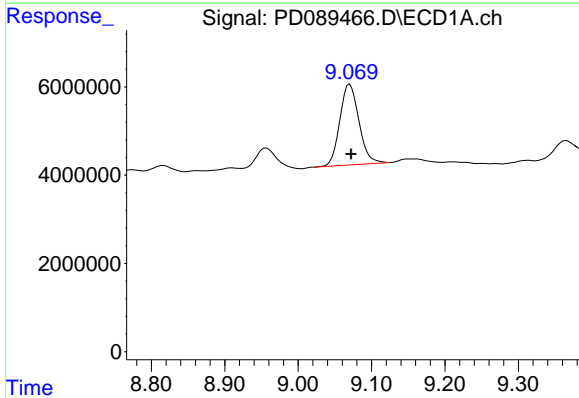
R.T.: 0.000 min
 Exp R.T.: 6.871 min
 Response: 0
 Conc: N.D.

Instrument :
 ECD_D
 ClientSampleId :
 MOO-25-0180



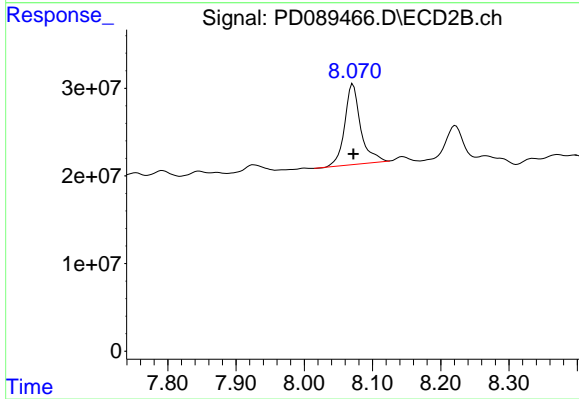
#27 Chlordane-5

R.T.: 6.111 min
 Delta R.T.: 0.021 min
 Response: 187382221
 Conc: 165.58 ng/ml



#28 Decachlorobiphenyl

R.T.: 9.070 min
 Delta R.T.: -0.002 min
 Response: 33007427
 Conc: 8.40 ng/ml



#28 Decachlorobiphenyl

R.T.: 8.071 min
 Delta R.T.: 0.000 min
 Response: 149377629
 Conc: 7.56 ng/ml