

Data Path : Z:\pestpcbsrv\HPCHEM1\ECD_D\Data\PD071125\
 Data File : PD089467.D
 Signal(s) : Signal #1: ECD1A.ch Signal #2: ECD2B.ch
 Acq On : 11 Jul 2025 16:12
 Operator : AR\AJ
 Sample : Q2566-03
 Misc :
 ALS Vial : 17 Sample Multiplier: 1

Instrument :
 ECD_D
 ClientSampleId :

Integration File signal 1: autoint1.e
 Integration File signal 2: autoint2.e
 Quant Time: Jul 11 22:54:46 2025
 Quant Method : Z:\pestpcbsrv\HPCHEM1\ECD_D\Method\PD061825.M
 Quant Title : GC Extractables
 QLast Update : Wed Jun 18 05:39:05 2025
 Response via : Initial Calibration
 Integrator: ChemStation

Volume Inj. : 1 µl
 Signal #1 Phase : ZB-MR2 Signal #2 Phase: ZB-MR2
 Signal #1 Info : 30M x 0.32mm x0.5 Signal #2 Info : 30M x 0.32mm x 0.25µm

Compound	RT#1	RT#2	Resp#1	Resp#2	ng/ml	ng/ml

System Monitoring Compounds						
1) SA Tetrachlo...	3.550	2.881	32297067	240.8E6	11.320	14.206 #
28) SA Decachlor...	9.071	8.070	48656119	224.0E6	12.388	11.333
Target Compounds						
2) A alpha-BHC	0.000	3.380	0	24474178	N.D.	0.913 #
3) MA gamma-BHC...	0.000	3.727	0	1992274	N.D.	0.080 #
4) MA Heptachlor	4.918	4.094	637099	43052910	0.117	1.719 #
5) MB Aldrin	5.260	4.387f	478223	15517991	0.090	0.641 #
6) B beta-BHC	4.522	0.000	3065412	0	1.389	N.D. #
7) B delta-BHC	4.777	4.237f	3175284	1900540	0.619	0.076 #
8) B Heptachlo...	5.707f	4.878	26864	44675604	0.006	2.040 #
9) A Endosulfan I	6.053f	5.239	1792837	10133546	0.398	0.486
10) B gamma-Chl...	5.939	5.101f	686438	17812197	0.143	0.745 #
11) B alpha-Chl...	6.053f	5.197	1792837	11448847	0.371	0.500 #
12) B 4,4'-DDE	6.186	5.384	145296	6975794	0.033	0.304 #
13) MA Dieldrin	6.354	5.508	1299457	4972874	0.271	0.214
14) MA Endrin	6.574	5.794	189944	65962275	0.046	3.038 #
15) B Endosulfa...	6.773	6.068	480531	10130409	0.119	0.502 #
16) A 4,4'-DDD	6.706	5.930	339665	3666772	0.099	0.192 #
17) MA 4,4'-DDT	7.004f	6.170	823028	26745213	0.217	1.319 #
18) B Endrin al...	6.913	6.270	49696	62675695	0.016	4.093 #
20) A Methoxychlor	7.498	6.742	1592700	7361744	0.788	0.684
21) B Endrin ke...	0.000	7.004	0	6097251	N.D.	0.282 #
22) Mirex	0.000	7.161f	0	15533878	N.D.	0.931 #
23) Chlordane-1	4.694f	3.911	221034	9897196	1.033	10.616 #
24) Chlordane-2	5.233	4.474	1523715	41905861	6.979	44.037 #
25) Chlordane-3	5.939	5.101f	686438	17812197	0.796	5.997 #
26) Chlordane-4	6.053	5.197	1792837	11448847	1.706	4.567 #
27) Chlordane-5	0.000	6.068f	0	10130409	N.D.	8.952 #

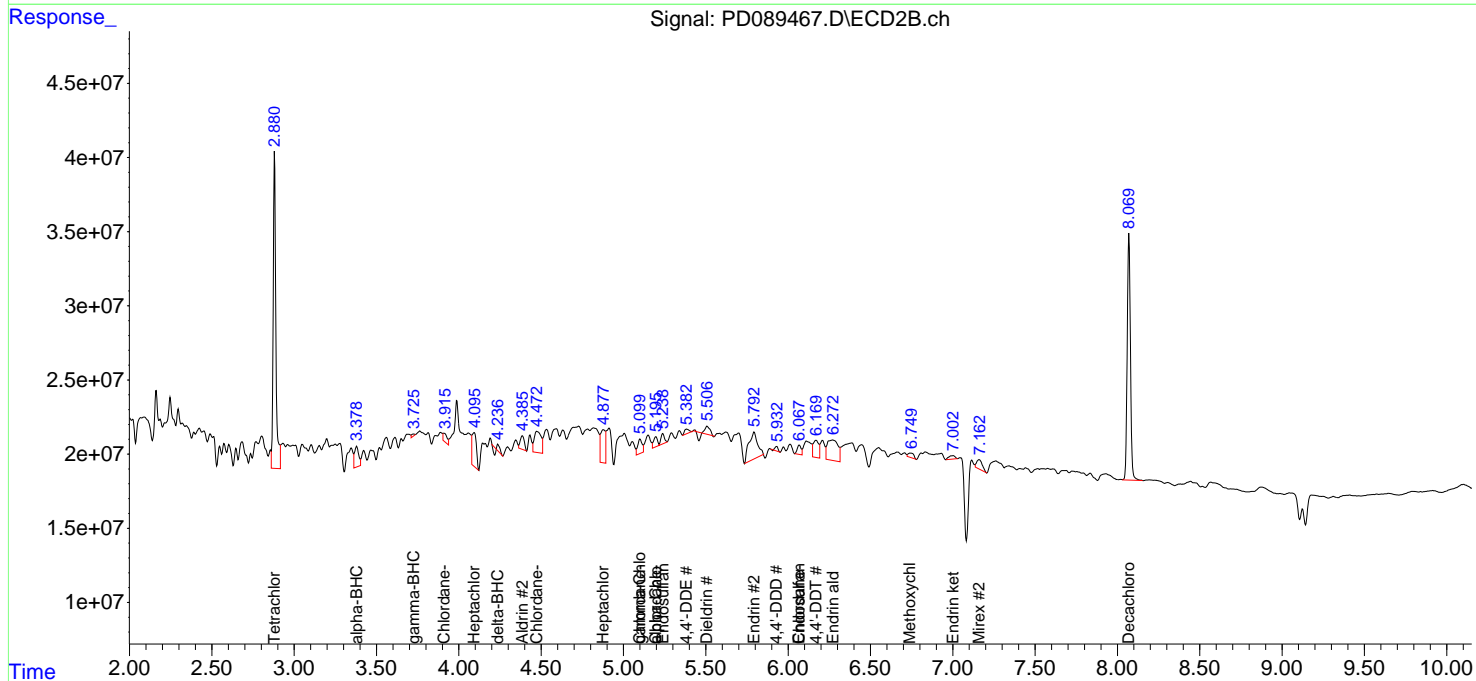
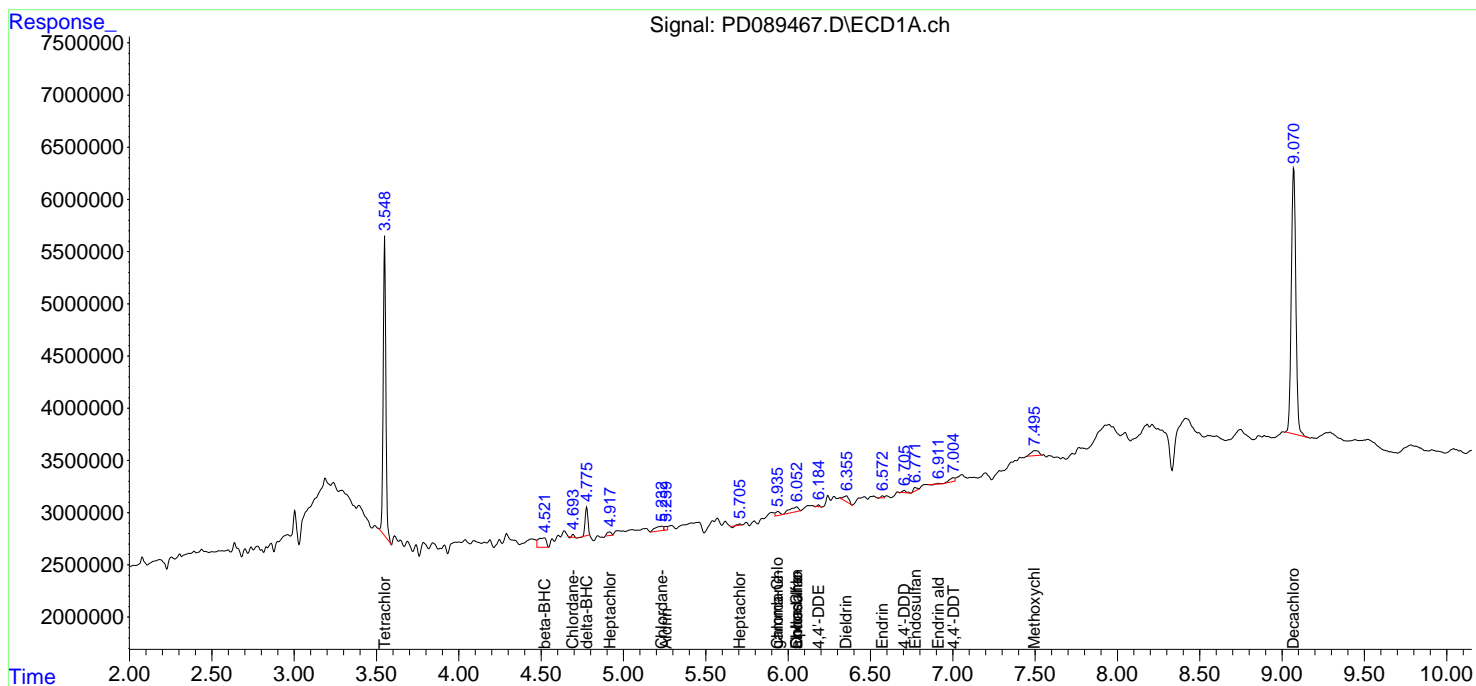
(f)=RT Delta > 1/2 Window (#)=Amounts differ by > 25% (m)=manual int.

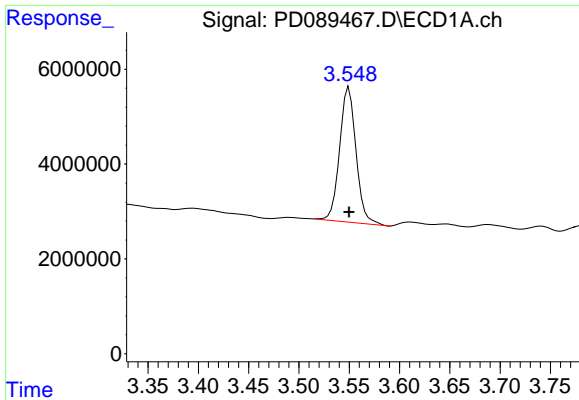
Data Path : Z:\pestpcbsrv\HPCHEM1\ECD_D\Data\PD071125\
 Data File : PD089467.D
 Signal(s) : Signal #1: ECD1A.ch Signal #2: ECD2B.ch
 Acq On : 11 Jul 2025 16:12
 Operator : AR\AJ
 Sample : Q2566-03
 Misc :
 ALS Vial : 17 Sample Multiplier: 1

Instrument :
 ECD_D
 ClientSampleId :

Integration File signal 1: autoint1.e
 Integration File signal 2: autoint2.e
 Quant Time: Jul 11 22:54:46 2025
 Quant Method : Z:\pestpcbsrv\HPCHEM1\ECD_D\Method\PD061825.M
 Quant Title : GC Extractables
 QLast Update : Wed Jun 18 05:39:05 2025
 Response via : Initial Calibration
 Integrator: ChemStation

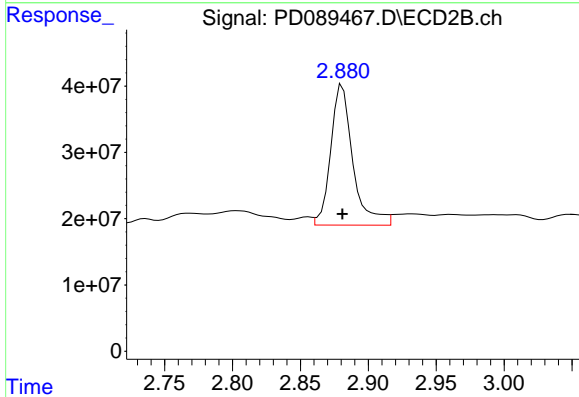
Volume Inj. : 1 µl
 Signal #1 Phase : ZB-MR1 Signal #2 Phase: ZB-MR2
 Signal #1 Info : 30M x 0.32mm x0.5 Signal #2 Info : 30M x 0.32mm x 0.25µm



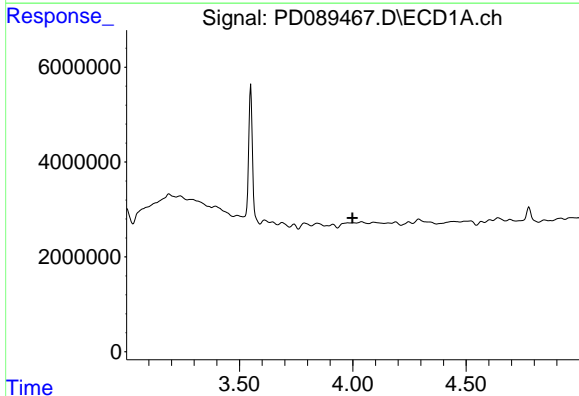


#1 Tetrachloro-m-xylene
R.T.: 3.550 min
Delta R.T.: 0.000 min
Response: 32297067
Conc: 11.32 ng/ml

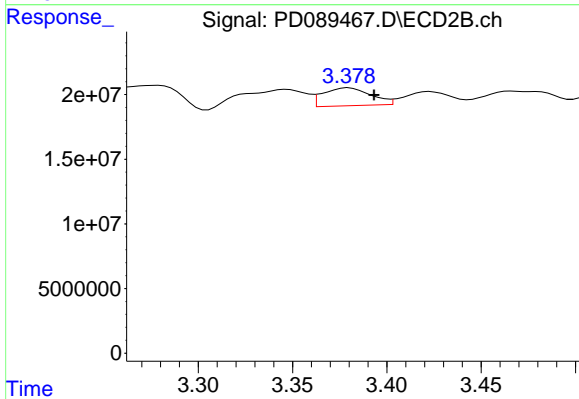
Instrument :
ECD_D
ClientSampleId :



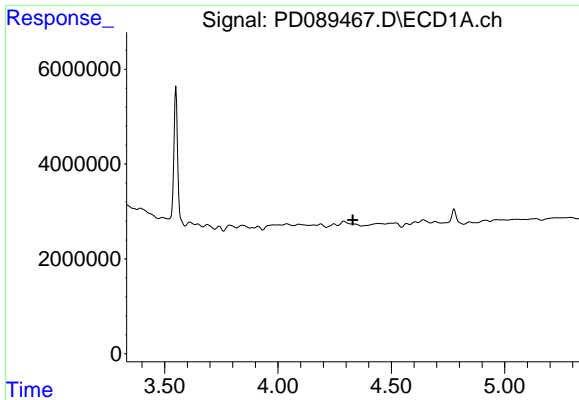
#1 Tetrachloro-m-xylene
R.T.: 2.881 min
Delta R.T.: 0.000 min
Response: 240837488
Conc: 14.21 ng/ml



#2 alpha-BHC
R.T.: 0.000 min
Exp R.T. : 3.999 min
Response: 0
Conc: N.D.



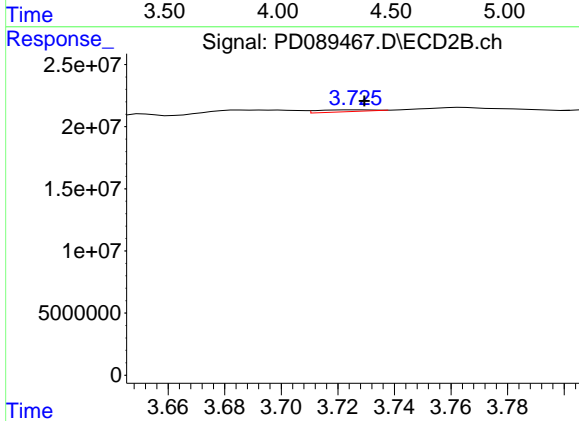
#2 alpha-BHC
R.T.: 3.380 min
Delta R.T.: -0.014 min
Response: 24474178
Conc: 0.91 ng/ml



#3 gamma-BHC (Lindane)

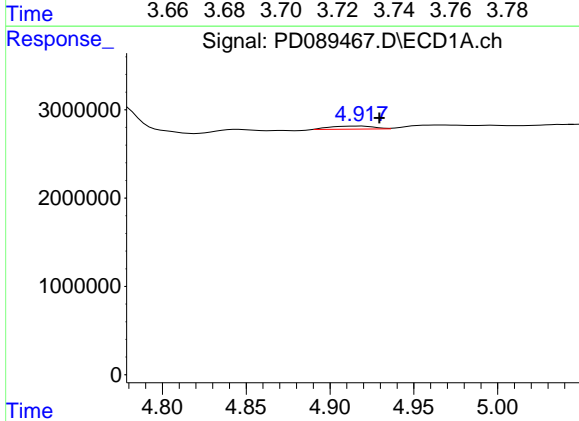
R.T.: 0.000 min
 Exp R.T.: 4.330 min
 Response: 0
 Conc: N.D.

Instrument :
 ECD_D
 ClientSampleId :



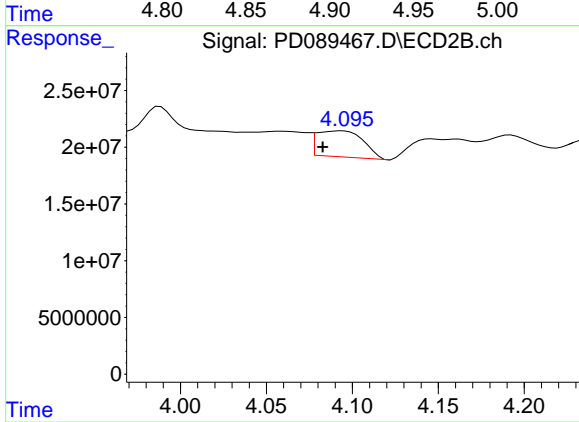
#3 gamma-BHC (Lindane)

R.T.: 3.727 min
 Delta R.T.: -0.002 min
 Response: 1992274
 Conc: 0.08 ng/ml



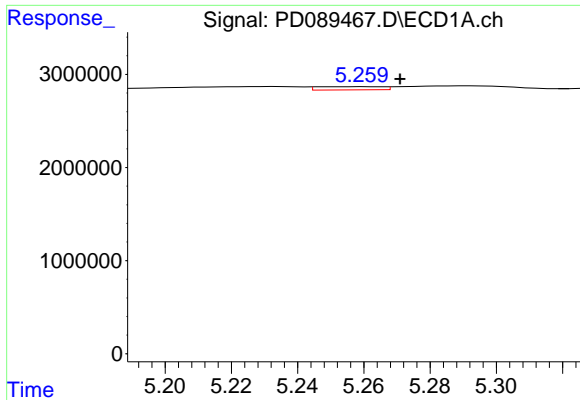
#4 Heptachlor

R.T.: 4.918 min
 Delta R.T.: -0.012 min
 Response: 637099
 Conc: 0.12 ng/ml



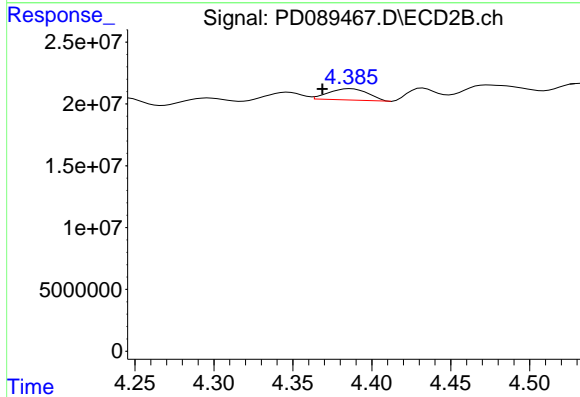
#4 Heptachlor

R.T.: 4.094 min
 Delta R.T.: 0.011 min
 Response: 43052910
 Conc: 1.72 ng/ml

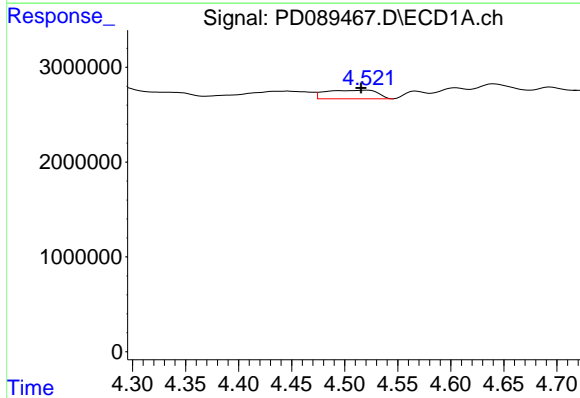


#5 Aldrin
 R.T.: 5.260 min
 Delta R.T.: -0.011 min
 Response: 478223
 Conc: 0.09 ng/ml

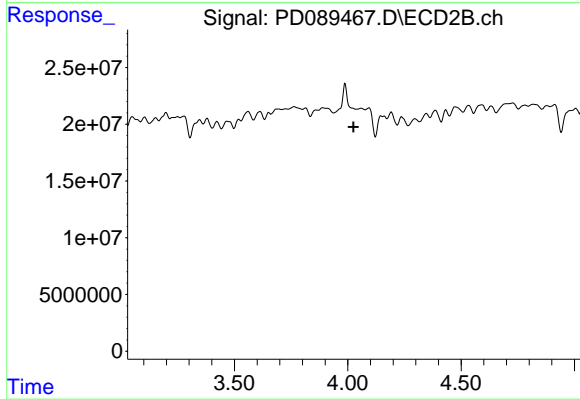
Instrument :
 ECD_D
 ClientSampleId :



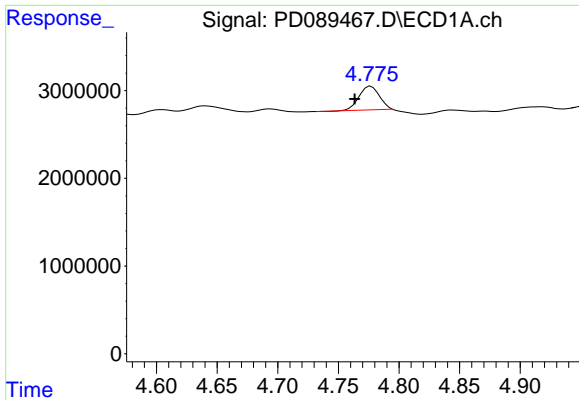
#5 Aldrin
 R.T.: 4.387 min
 Delta R.T.: 0.018 min
 Response: 15517991
 Conc: 0.64 ng/ml



#6 beta-BHC
 R.T.: 4.522 min
 Delta R.T.: 0.006 min
 Response: 3065412
 Conc: 1.39 ng/ml



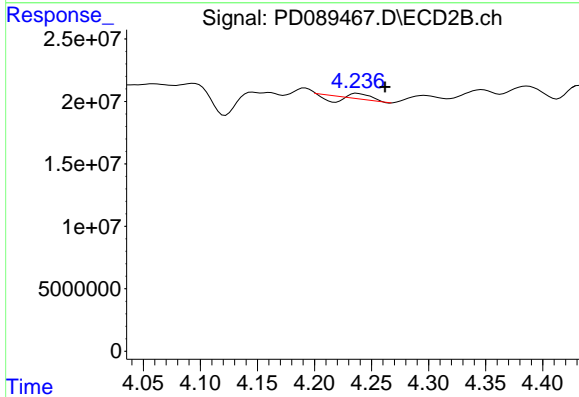
#6 beta-BHC
 R.T.: 0.000 min
 Exp R.T. : 4.025 min
 Response: 0
 Conc: N.D.



#7 delta-BHC

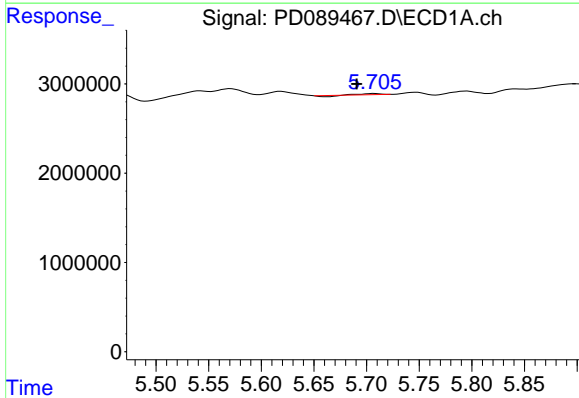
R.T.: 4.777 min
 Delta R.T.: 0.013 min
 Response: 3175284
 Conc: 0.62 ng/ml

Instrument :
 ECD_D
 ClientSampleId :



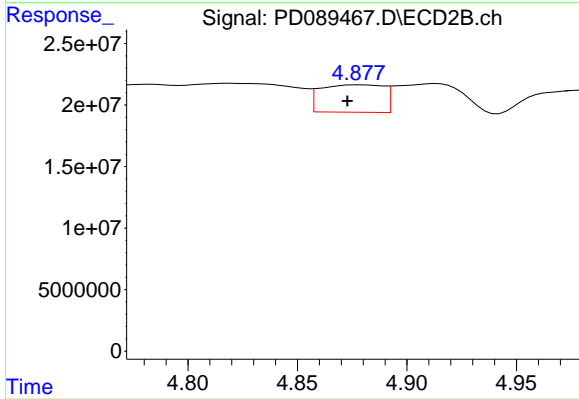
#7 delta-BHC

R.T.: 4.237 min
 Delta R.T.: -0.025 min
 Response: 1900540
 Conc: 0.08 ng/ml



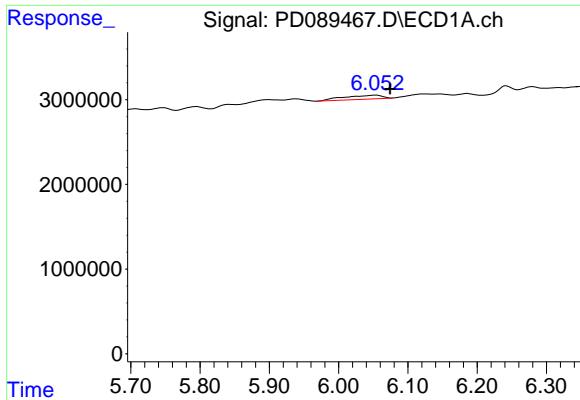
#8 Heptachlor epoxide

R.T.: 5.707 min
 Delta R.T.: 0.016 min
 Response: 26864
 Conc: 0.01 ng/ml



#8 Heptachlor epoxide

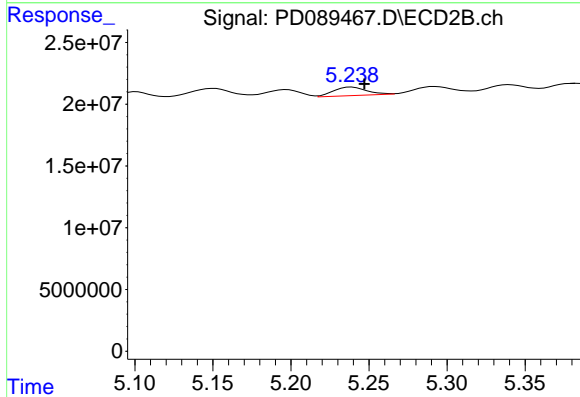
R.T.: 4.878 min
 Delta R.T.: 0.006 min
 Response: 44675604
 Conc: 2.04 ng/ml



#9 Endosulfan I

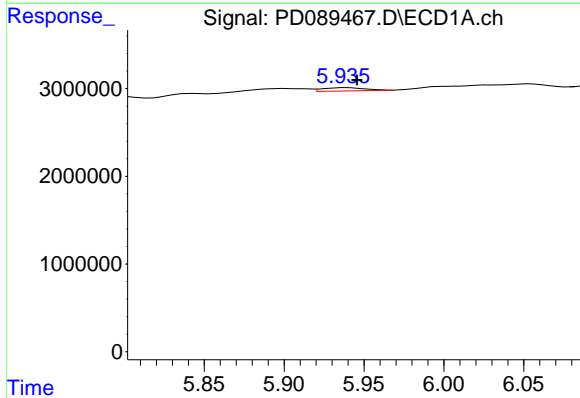
R.T.: 6.053 min
 Delta R.T.: -0.021 min
 Response: 1792837
 Conc: 0.40 ng/ml

Instrument :
 ECD_D
 ClientSampleId :



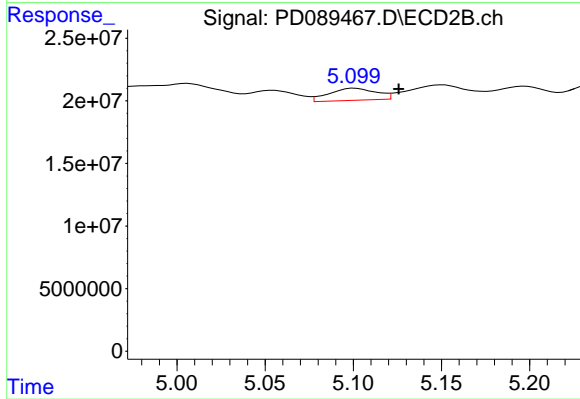
#9 Endosulfan I

R.T.: 5.239 min
 Delta R.T.: -0.008 min
 Response: 10133546
 Conc: 0.49 ng/ml



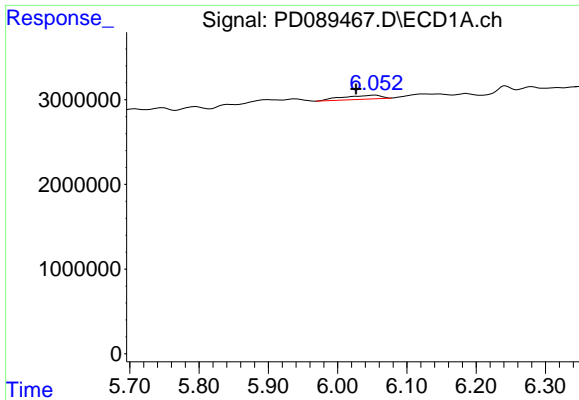
#10 gamma-Chlordane

R.T.: 5.939 min
 Delta R.T.: -0.007 min
 Response: 686438
 Conc: 0.14 ng/ml



#10 gamma-Chlordane

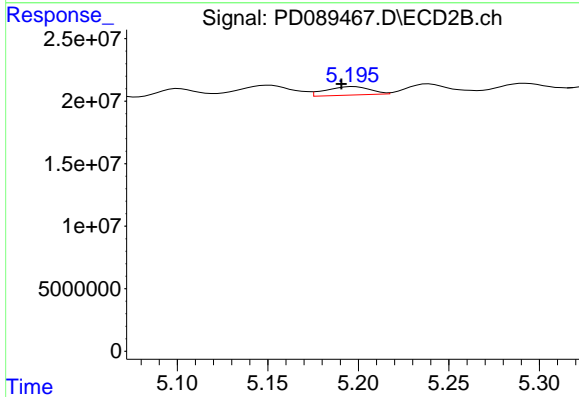
R.T.: 5.101 min
 Delta R.T.: -0.025 min
 Response: 17812197
 Conc: 0.74 ng/ml



#11 alpha-Chlordane

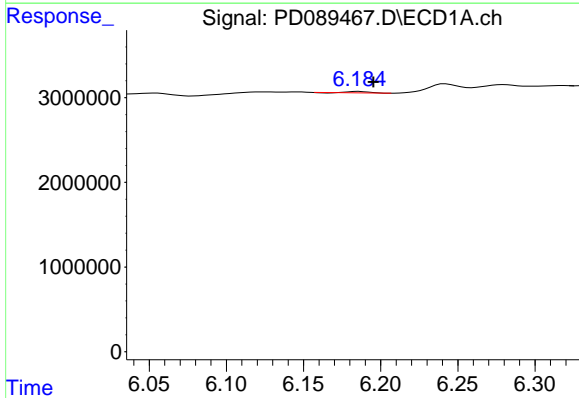
R.T.: 6.053 min
 Delta R.T.: 0.026 min
 Response: 1792837
 Conc: 0.37 ng/ml

Instrument :
 ECD_D
 ClientSampleId :



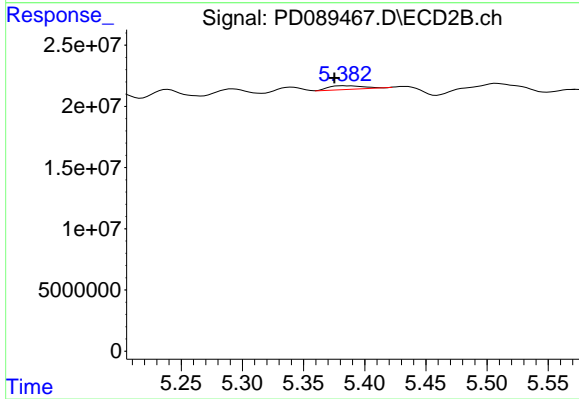
#11 alpha-Chlordane

R.T.: 5.197 min
 Delta R.T.: 0.007 min
 Response: 11448847
 Conc: 0.50 ng/ml



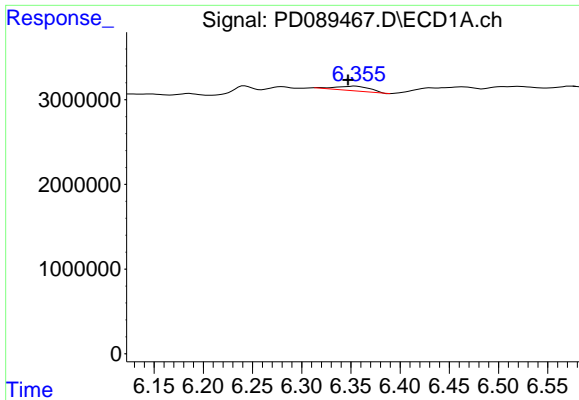
#12 4,4'-DDE

R.T.: 6.186 min
 Delta R.T.: -0.010 min
 Response: 145296
 Conc: 0.03 ng/ml



#12 4,4'-DDE

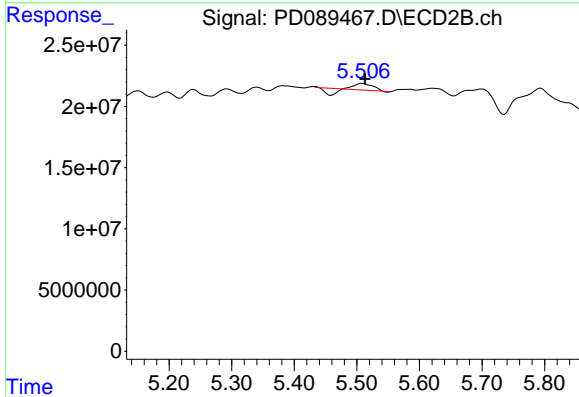
R.T.: 5.384 min
 Delta R.T.: 0.008 min
 Response: 6975794
 Conc: 0.30 ng/ml



#13 Dieldrin

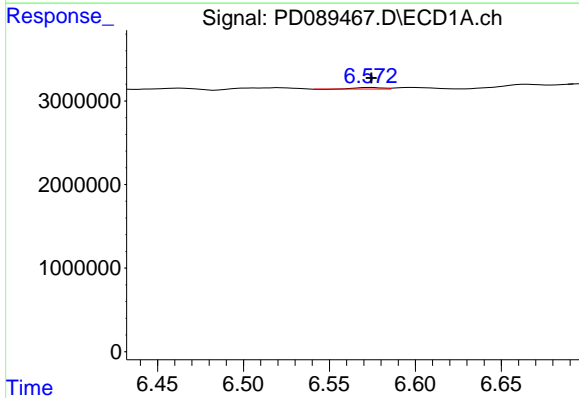
R.T.: 6.354 min
 Delta R.T.: 0.007 min
 Response: 1299457
 Conc: 0.27 ng/ml

Instrument : ECD_D
 ClientSampleId :



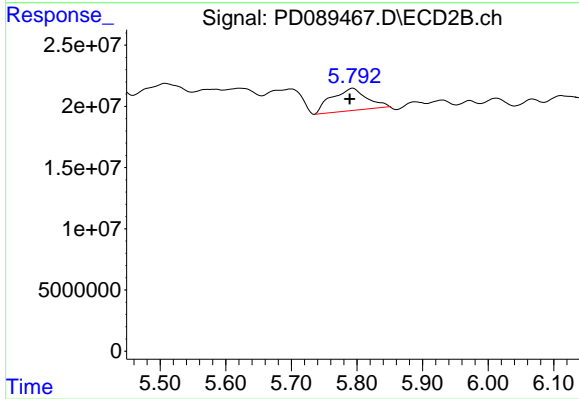
#13 Dieldrin

R.T.: 5.508 min
 Delta R.T.: -0.005 min
 Response: 4972874
 Conc: 0.21 ng/ml



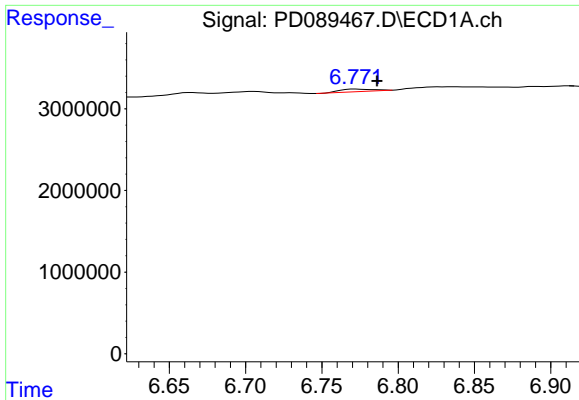
#14 Endrin

R.T.: 6.574 min
 Delta R.T.: 0.000 min
 Response: 189944
 Conc: 0.05 ng/ml



#14 Endrin

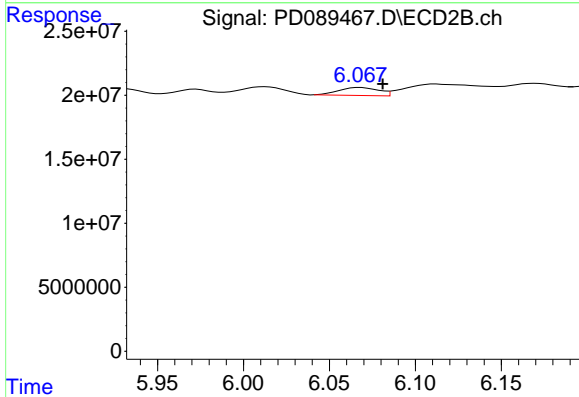
R.T.: 5.794 min
 Delta R.T.: 0.005 min
 Response: 65962275
 Conc: 3.04 ng/ml



#15 Endosulfan II

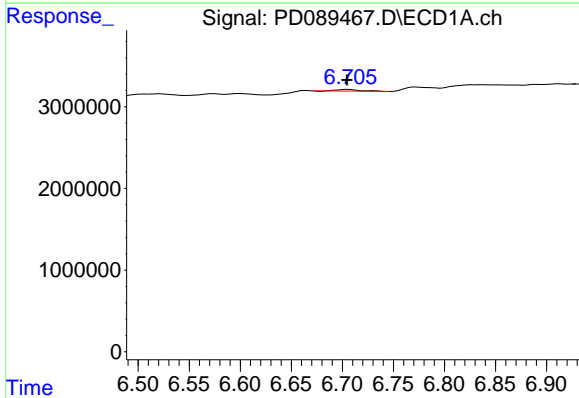
R.T.: 6.773 min
 Delta R.T.: -0.014 min
 Response: 480531
 Conc: 0.12 ng/ml

Instrument :
 ECD_D
 ClientSampleId :



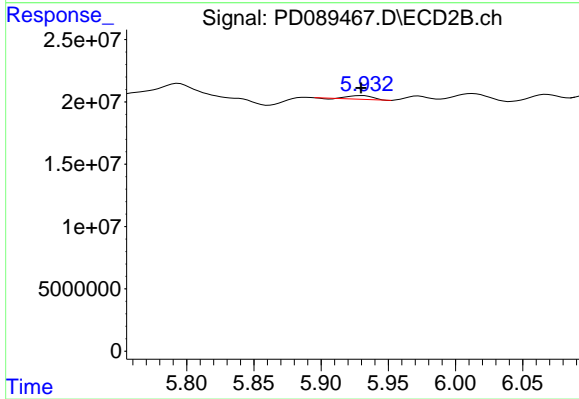
#15 Endosulfan II

R.T.: 6.068 min
 Delta R.T.: -0.013 min
 Response: 10130409
 Conc: 0.50 ng/ml



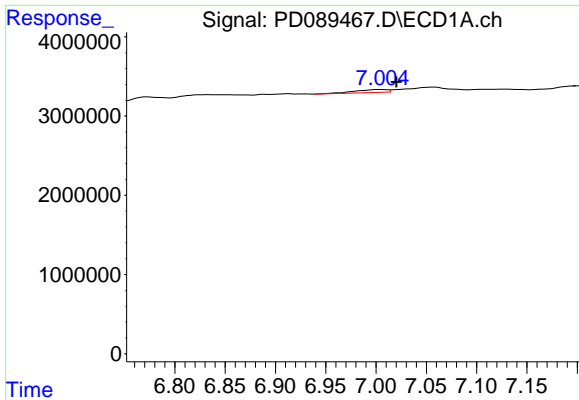
#16 4,4'-DDD

R.T.: 6.706 min
 Delta R.T.: 0.001 min
 Response: 339665
 Conc: 0.10 ng/ml



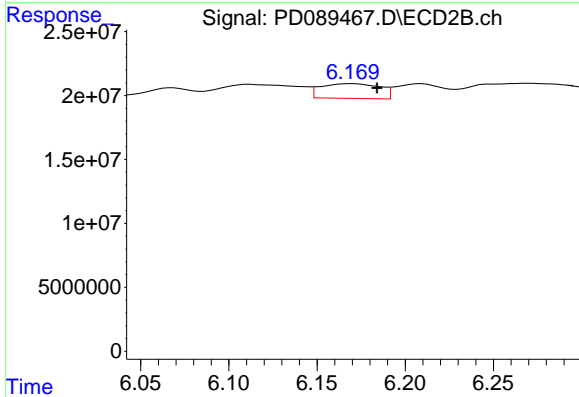
#16 4,4'-DDD

R.T.: 5.930 min
 Delta R.T.: 0.000 min
 Response: 3666772
 Conc: 0.19 ng/ml

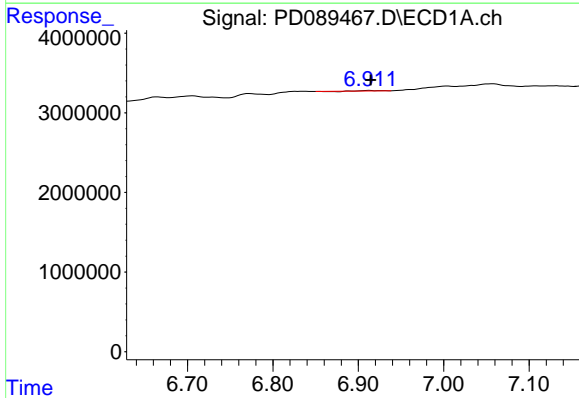


#17 4,4'-DDT
 R.T.: 7.004 min
 Delta R.T.: -0.016 min
 Response: 823028
 Conc: 0.22 ng/ml

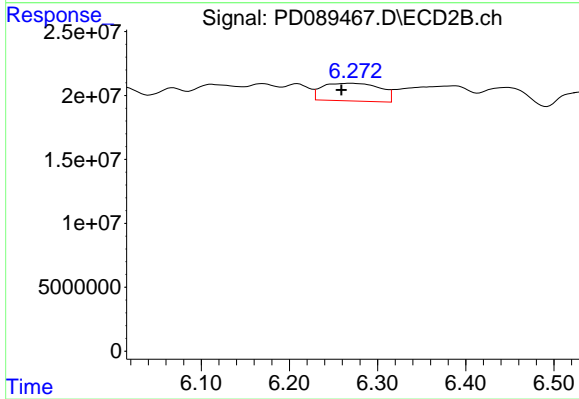
Instrument :
 ECD_D
 ClientSampleId :



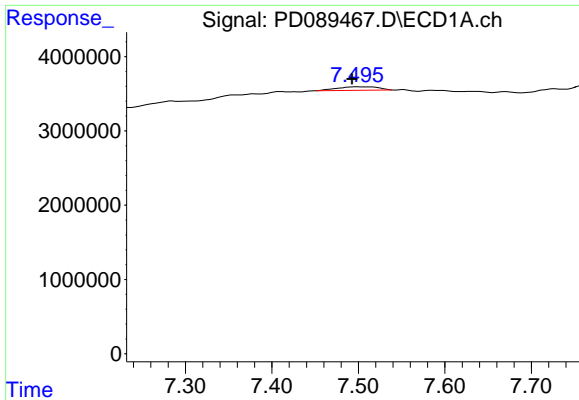
#17 4,4'-DDT
 R.T.: 6.170 min
 Delta R.T.: -0.014 min
 Response: 26745213
 Conc: 1.32 ng/ml



#18 Endrin aldehyde
 R.T.: 6.913 min
 Delta R.T.: -0.002 min
 Response: 49696
 Conc: 0.02 ng/ml



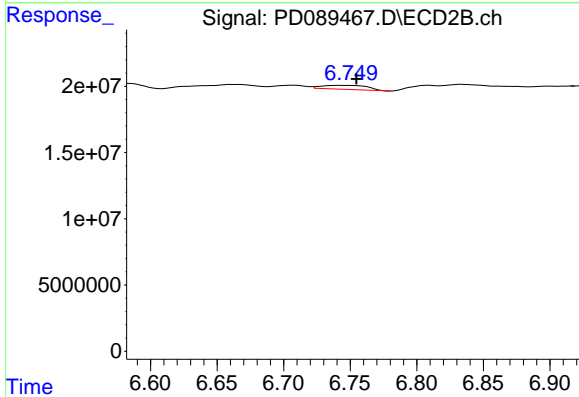
#18 Endrin aldehyde
 R.T.: 6.270 min
 Delta R.T.: 0.011 min
 Response: 62675695
 Conc: 4.09 ng/ml



#20 Methoxychlor

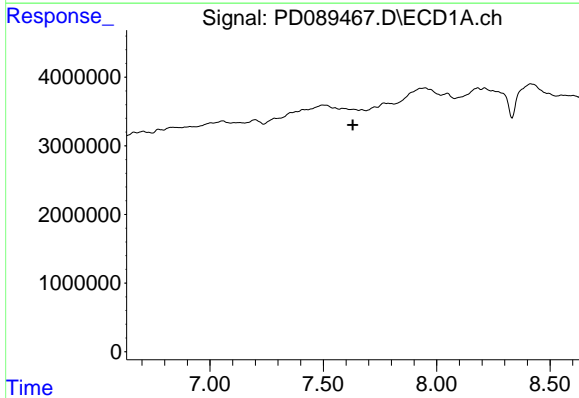
R.T.: 7.498 min
 Delta R.T.: 0.005 min
 Response: 1592700
 Conc: 0.79 ng/ml

Instrument :
 ECD_D
 ClientSampleId :



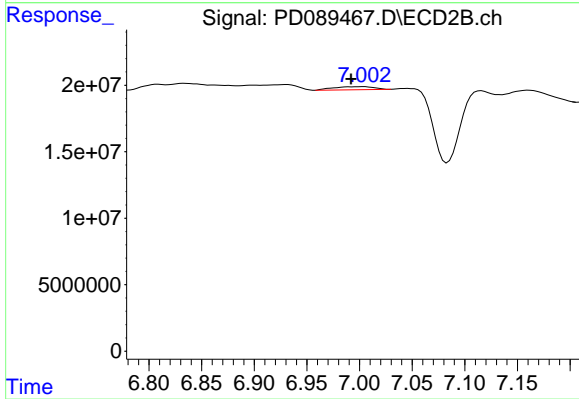
#20 Methoxychlor

R.T.: 6.742 min
 Delta R.T.: -0.013 min
 Response: 7361744
 Conc: 0.68 ng/ml



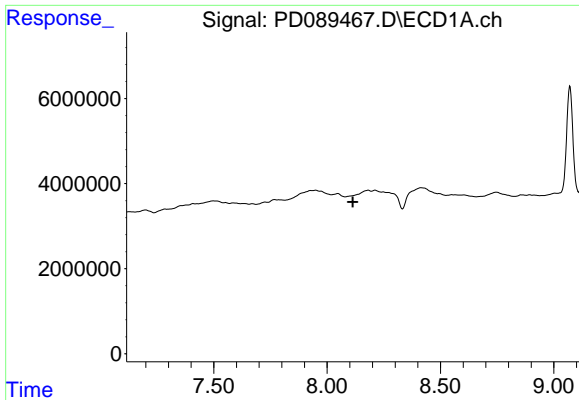
#21 Endrin ketone

R.T.: 0.000 min
 Exp R.T. : 7.629 min
 Response: 0
 Conc: N.D.



#21 Endrin ketone

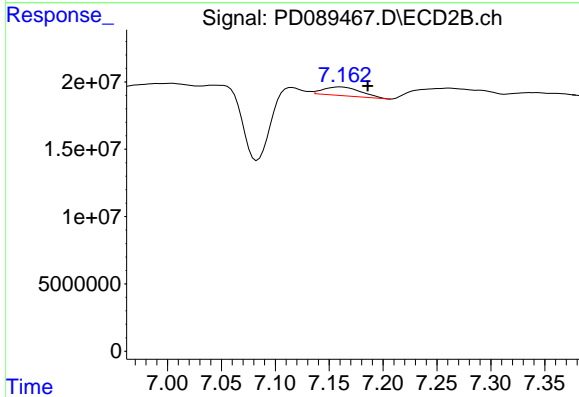
R.T.: 7.004 min
 Delta R.T.: 0.012 min
 Response: 6097251
 Conc: 0.28 ng/ml



#22 Mirex

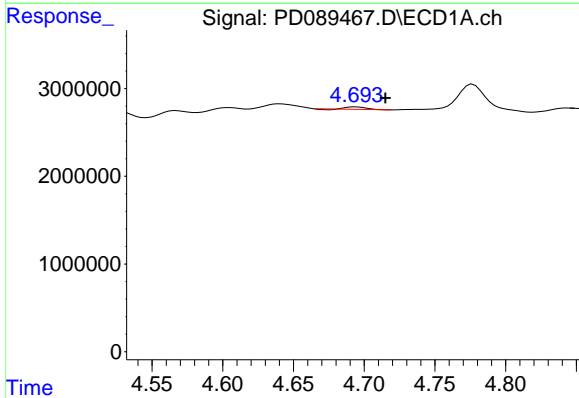
R.T.: 0.000 min
 Exp R.T.: 8.113 min
 Response: 0
 Conc: N.D.

Instrument :
 ECD_D
 ClientSampleId :



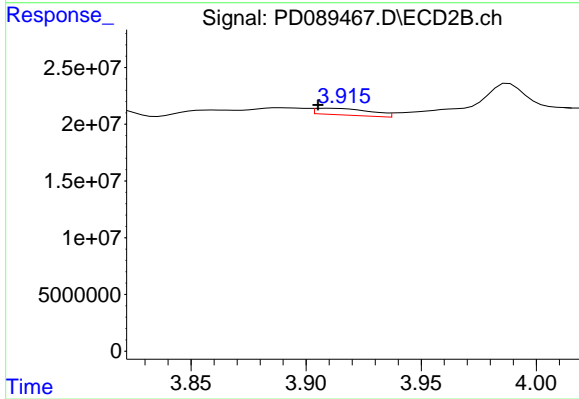
#22 Mirex

R.T.: 7.161 min
 Delta R.T.: -0.025 min
 Response: 15533878
 Conc: 0.93 ng/ml



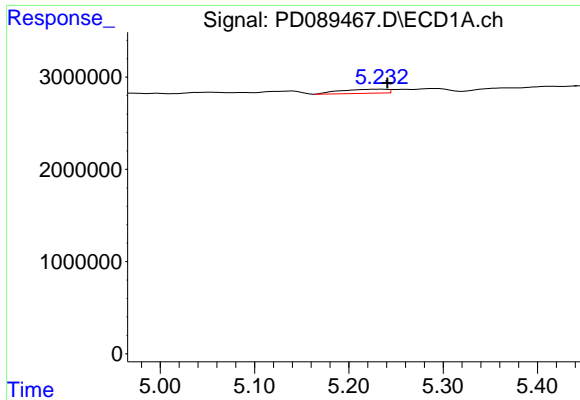
#23 Chlordane-1

R.T.: 4.694 min
 Delta R.T.: -0.021 min
 Response: 221034
 Conc: 1.03 ng/ml



#23 Chlordane-1

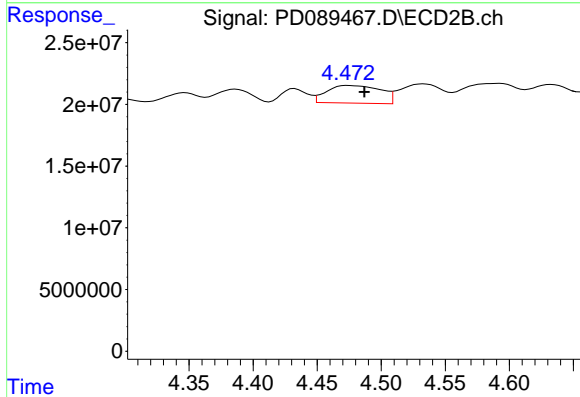
R.T.: 3.911 min
 Delta R.T.: 0.006 min
 Response: 9897196
 Conc: 10.62 ng/ml



#24 Chlordane-2

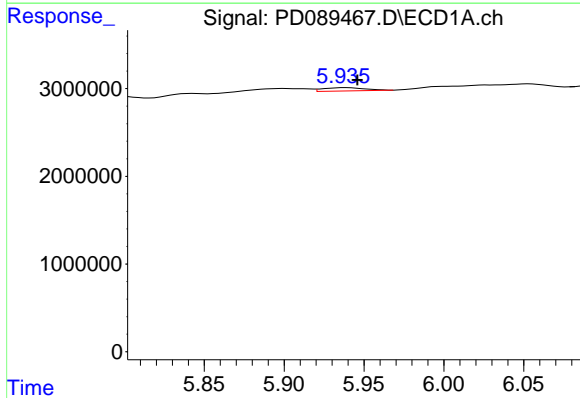
R.T.: 5.233 min
 Delta R.T.: -0.008 min
 Response: 1523715
 Conc: 6.98 ng/ml

Instrument :
 ECD_D
 ClientSampleId :



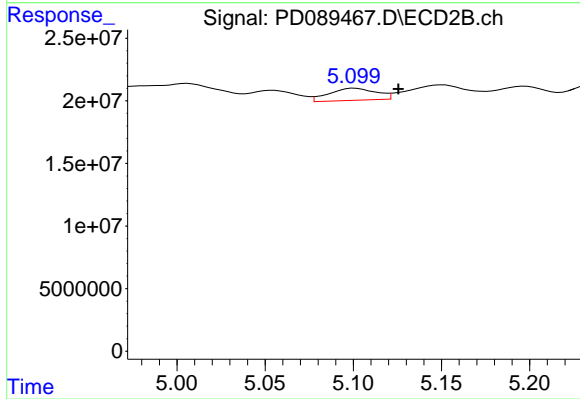
#24 Chlordane-2

R.T.: 4.474 min
 Delta R.T.: -0.013 min
 Response: 41905861
 Conc: 44.04 ng/ml



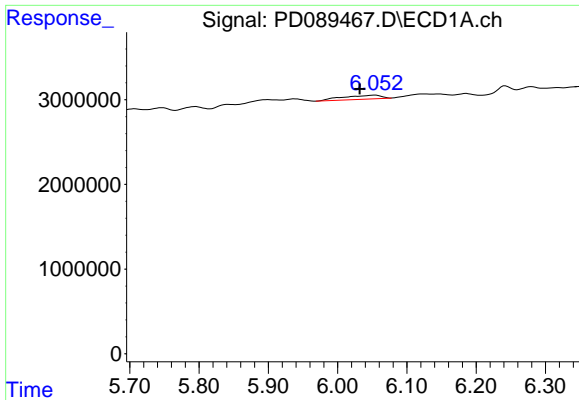
#25 Chlordane-3

R.T.: 5.939 min
 Delta R.T.: -0.007 min
 Response: 686438
 Conc: 0.80 ng/ml



#25 Chlordane-3

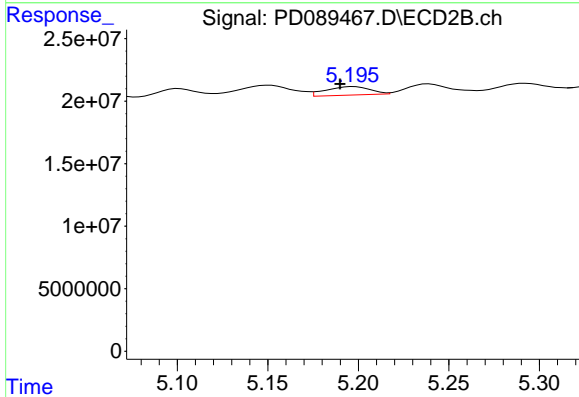
R.T.: 5.101 min
 Delta R.T.: -0.025 min
 Response: 17812197
 Conc: 6.00 ng/ml



#26 Chlordane-4

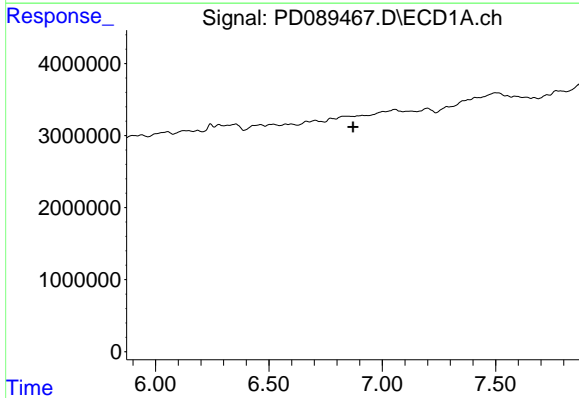
R.T.: 6.053 min
 Delta R.T.: 0.021 min
 Response: 1792837
 Conc: 1.71 ng/ml

Instrument :
 ECD_D
 ClientSampleId :



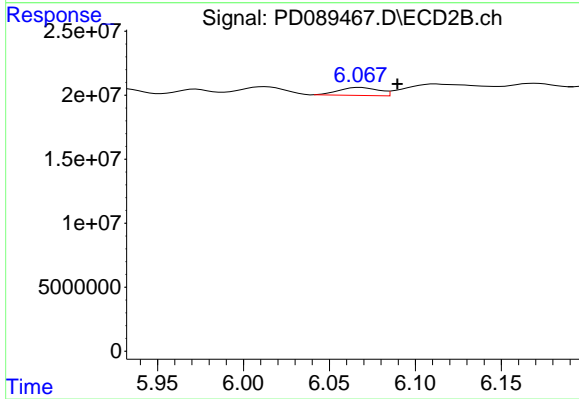
#26 Chlordane-4

R.T.: 5.197 min
 Delta R.T.: 0.007 min
 Response: 11448847
 Conc: 4.57 ng/ml



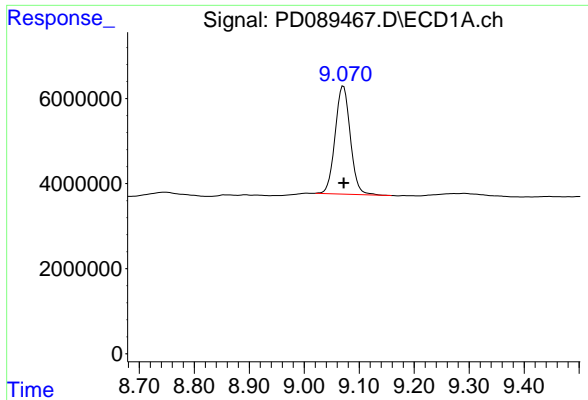
#27 Chlordane-5

R.T.: 0.000 min
 Exp R.T. : 6.871 min
 Response: 0
 Conc: N.D.



#27 Chlordane-5

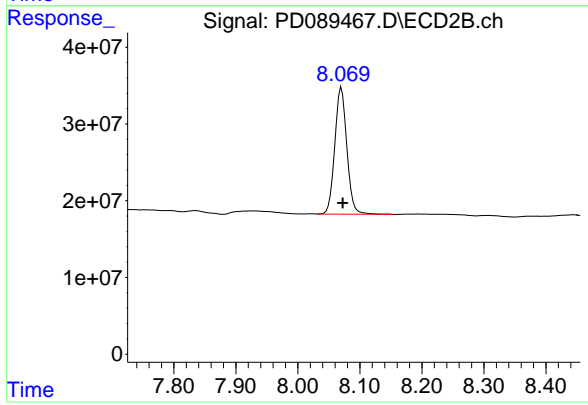
R.T.: 6.068 min
 Delta R.T.: -0.021 min
 Response: 10130409
 Conc: 8.95 ng/ml



#28 Decachlorobiphenyl

R.T.: 9.071 min
 Delta R.T.: 0.000 min
 Response: 48656119
 Conc: 12.39 ng/ml

Instrument :
 ECD_D
 ClientSampleId :



#28 Decachlorobiphenyl

R.T.: 8.070 min
 Delta R.T.: -0.002 min
 Response: 224046131
 Conc: 11.33 ng/ml