

Data Path : Z:\pestpcbsrv\HPCHEM1\ECD\_D\Data\PD071125\  
 Data File : PD089469.D  
 Signal(s) : Signal #1: ECD1A.ch Signal #2: ECD2B.ch  
 Acq On : 11 Jul 2025 16:40  
 Operator : AR\AJ  
 Sample : Q2571-05  
 Misc :  
 ALS Vial : 19 Sample Multiplier: 1

Instrument :  
 ECD\_D  
 ClientSampleId :  
 TP-17

Integration File signal 1: autoint1.e  
 Integration File signal 2: autoint2.e  
 Quant Time: Jul 11 22:55:23 2025  
 Quant Method : Z:\pestpcbsrv\HPCHEM1\ECD\_D\Method\PD061825.M  
 Quant Title : GC Extractables  
 QLast Update : Wed Jun 18 05:39:05 2025  
 Response via : Initial Calibration  
 Integrator: ChemStation

Volume Inj. : 1 µl  
 Signal #1 Phase : ZB-MR2 Signal #2 Phase: ZB-MR2  
 Signal #1 Info : 30M x 0.32mm x0.5 Signal #2 Info : 30M x 0.32mm x 0.25µm

Compound	RT#1	RT#2	Resp#1	Resp#2	ng/ml	ng/ml
System Monitoring Compounds						
1) SA Tetrachlo...	3.550	2.881	48727714	725.6E6	17.079	42.802 #
28) SA Decachlor...	9.071	8.070	52049080	263.7E6	13.252	13.337
Target Compounds						
2) A alpha-BHC	0.000	3.383	0	108.5E6	N.D.	4.049 #
3) MA gamma-BHC...	4.331	0.000	779746	0	0.140	N.D. #
4) MA Heptachlor	4.945f	4.088	696398	1024982	0.128	0.041 #
6) B beta-BHC	4.516	4.038	808728	5851691	0.366	0.545 #
7) B delta-BHC	4.777	4.258	2308082	1852315	0.450	0.074 #
8) B Heptachlo...	5.705	4.857f	1334054	68195115	0.277	3.114 #
9) A Endosulfan I	6.098f	5.267f	4008736	49546563	0.889	2.377 #
10) B gamma-Chl...	0.000	5.122	0	35258273	N.D.	1.474 #
11) B alpha-Chl...	6.032	5.207f	2866349	30474675	0.592	1.331 #
12) B 4,4'-DDE	0.000	5.396f	0	8037867	N.D.	0.351 #
13) MA Dieldrin	6.352	5.511	366012	33915577	0.076	1.461 #
14) MA Endrin	6.576	5.785	753072	349.8E6	0.183	16.108 #
15) B Endosulfa...	0.000	6.077	0	16471016	N.D.	0.816 #
16) A 4,4'-DDD	6.690	0.000	5785038	0	1.686	N.D. #
17) MA 4,4'-DDT	7.027	6.185	343967	10408357	0.091	0.513 #
18) B Endrin al...	6.920	6.268	1130295	12908011	0.369	0.843 #
19) B Endosulfa...	0.000	6.496	0	5435829	N.D.	0.277 #
22) Mirex	8.098f	0.000	1079377	0	0.355	N.D. #
23) Chlordane-1	0.000	3.909	0	8237147	N.D.	8.836 #
24) Chlordane-2	5.256	4.453f	213634	43172662	0.979	45.368 #
25) Chlordane-3	0.000	5.122	0	35258273	N.D.	11.871 #
26) Chlordane-4	6.032	5.207	2866349	30474675	2.728	12.157 #
27) Chlordane-5	6.870	6.077	823828	16471016	4.508	14.555 #

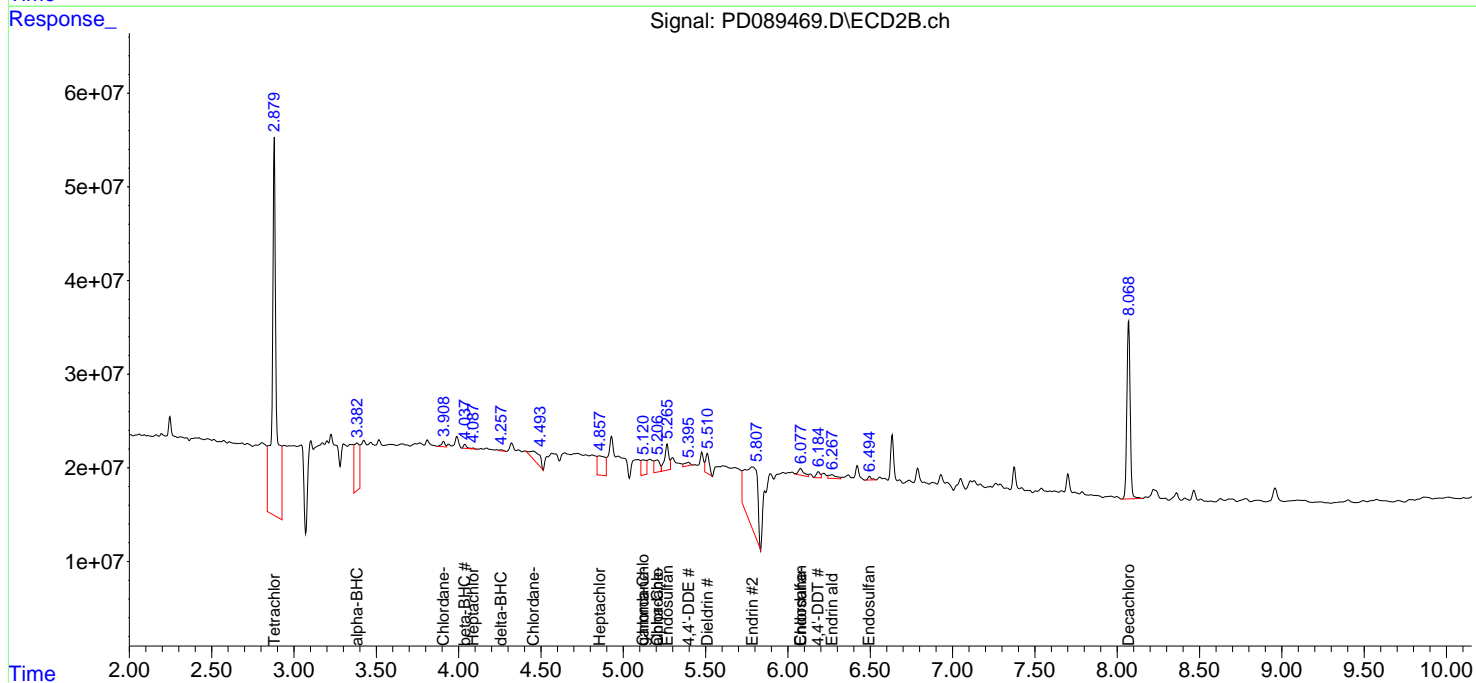
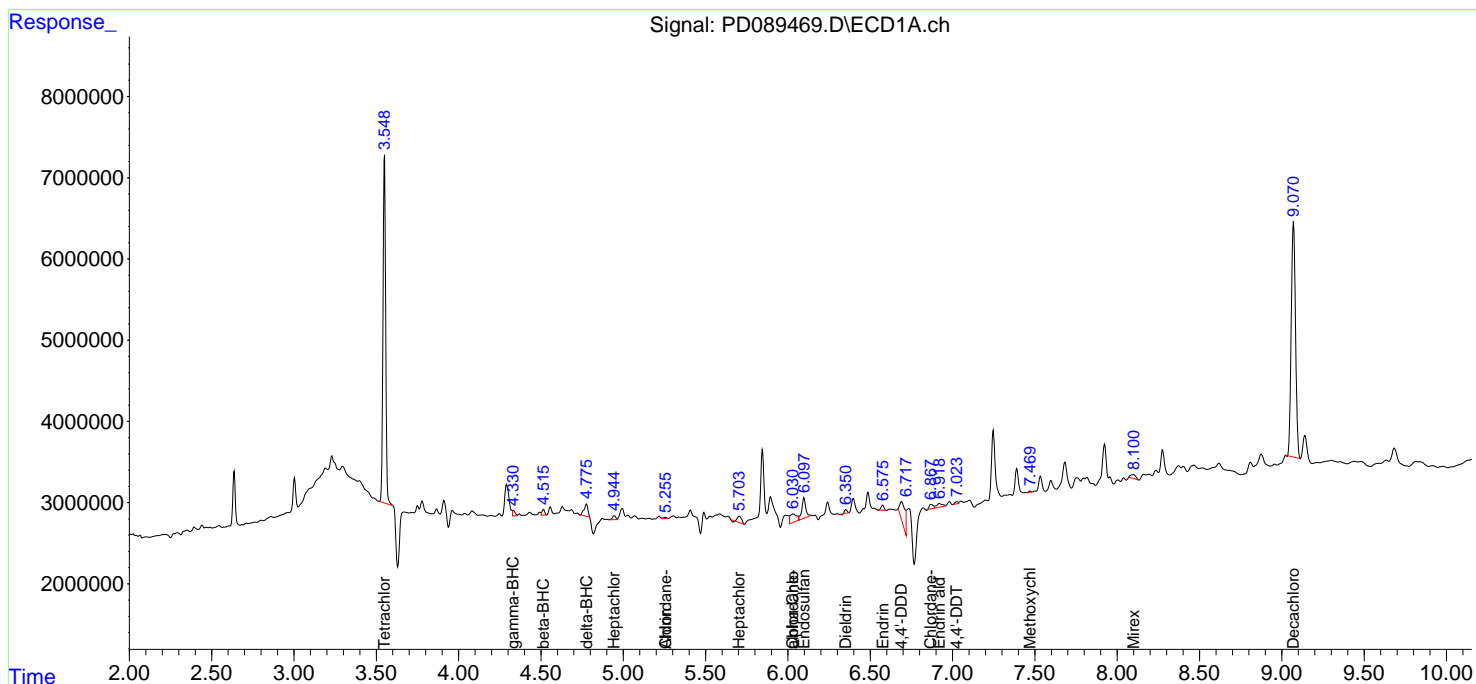
(f)=RT Delta > 1/2 Window (#)=Amounts differ by > 25% (m)=manual int.

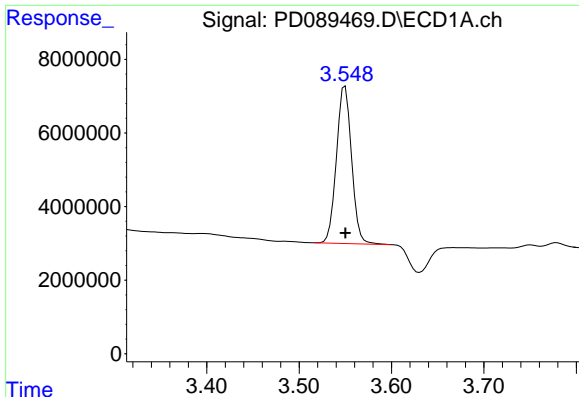
Data Path : Z:\pestpcbsrv\HPCHEM1\ECD\_D\Data\PD071125\  
 Data File : PD089469.D  
 Signal(s) : Signal #1: ECD1A.ch Signal #2: ECD2B.ch  
 Acq On : 11 Jul 2025 16:40  
 Operator : AR\AJ  
 Sample : Q2571-05  
 Misc :  
 ALS Vial : 19 Sample Multiplier: 1

Instrument :  
 ECD\_D  
 ClientSampleId :  
 TP-17

Integration File signal 1: autoint1.e  
 Integration File signal 2: autoint2.e  
 Quant Time: Jul 11 22:55:23 2025  
 Quant Method : Z:\pestpcbsrv\HPCHEM1\ECD\_D\Method\PD061825.M  
 Quant Title : GC Extractables  
 QLast Update : Wed Jun 18 05:39:05 2025  
 Response via : Initial Calibration  
 Integrator: ChemStation

Volume Inj. : 1 µl  
 Signal #1 Phase : ZB-MR1 Signal #2 Phase: ZB-MR2  
 Signal #1 Info : 30M x 0.32mm x0.5 Signal #2 Info : 30M x 0.32mm x 0.25µm

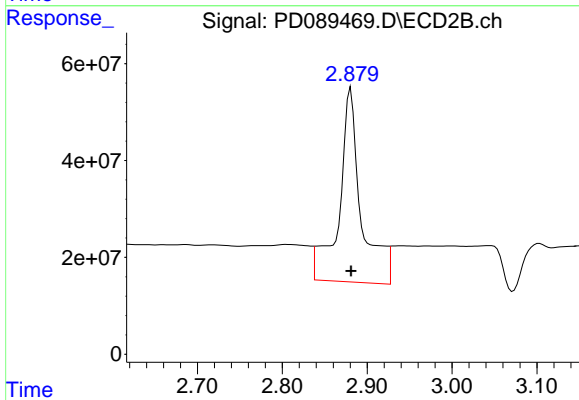




#1 Tetrachloro-m-xylene

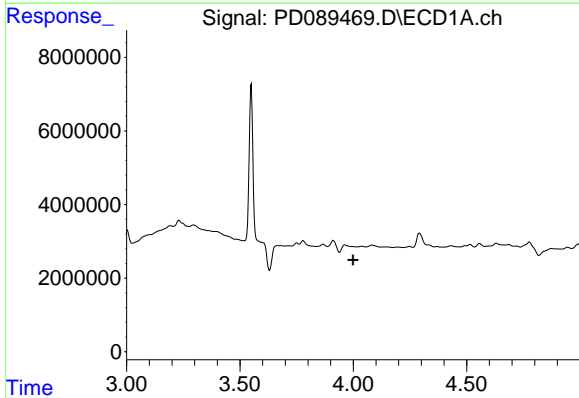
R.T.: 3.550 min  
 Delta R.T.: 0.000 min  
 Response: 48727714  
 Conc: 17.08 ng/ml

Instrument :  
 ECD\_D  
 ClientSampleId :  
 TP-17



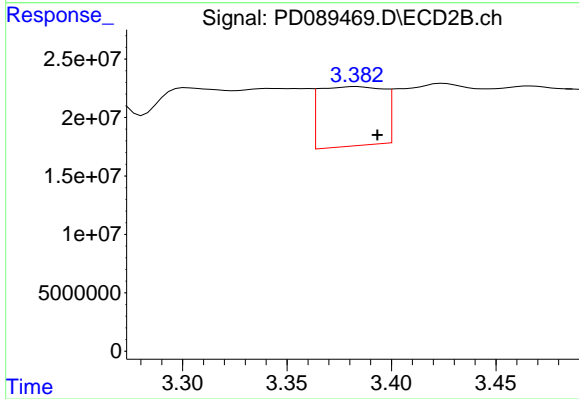
#1 Tetrachloro-m-xylene

R.T.: 2.881 min  
 Delta R.T.: 0.000 min  
 Response: 725630918  
 Conc: 42.80 ng/ml



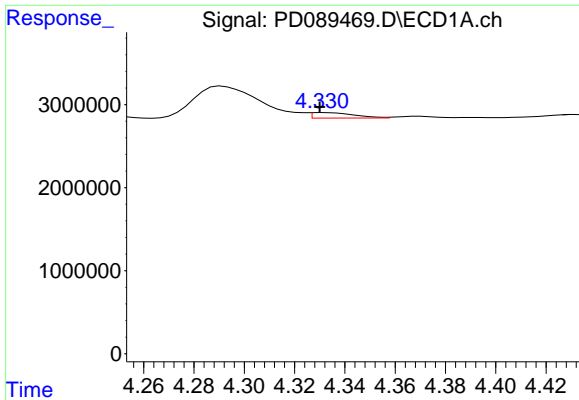
#2 alpha-BHC

R.T.: 0.000 min  
 Exp R.T. : 3.999 min  
 Response: 0  
 Conc: N.D.



#2 alpha-BHC

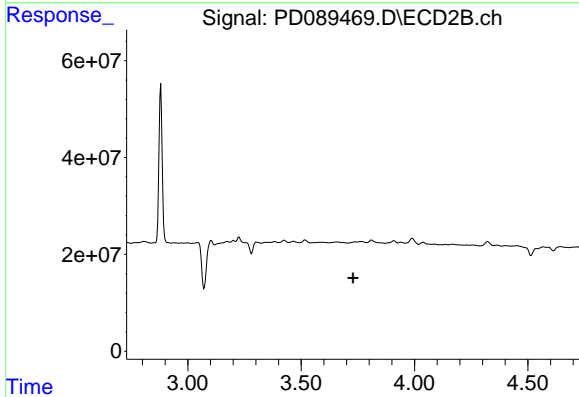
R.T.: 3.383 min  
 Delta R.T.: -0.010 min  
 Response: 108512464  
 Conc: 4.05 ng/ml



#3 gamma-BHC (Lindane)

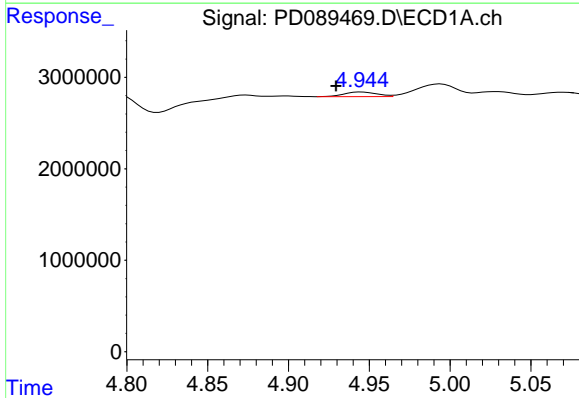
R.T.: 4.331 min  
 Delta R.T.: 0.001 min  
 Response: 779746  
 Conc: 0.14 ng/ml

Instrument :  
 ECD\_D  
 ClientSampleId :  
 TP-17



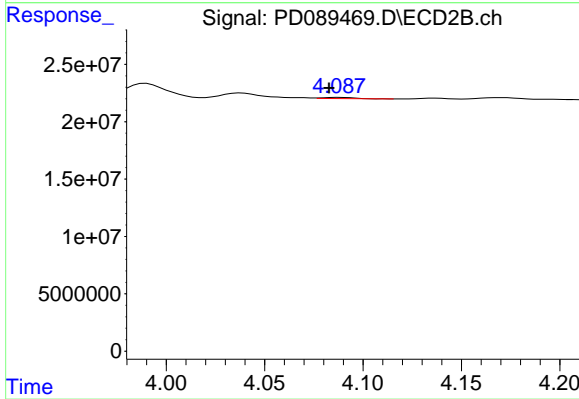
#3 gamma-BHC (Lindane)

R.T.: 0.000 min  
 Exp R.T. : 3.729 min  
 Response: 0  
 Conc: N.D.



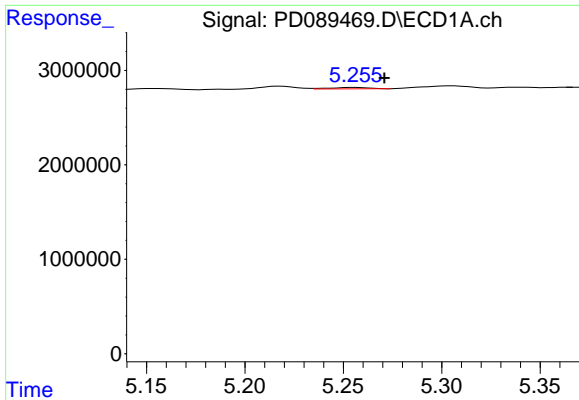
#4 Heptachlor

R.T.: 4.945 min  
 Delta R.T.: 0.016 min  
 Response: 696398  
 Conc: 0.13 ng/ml



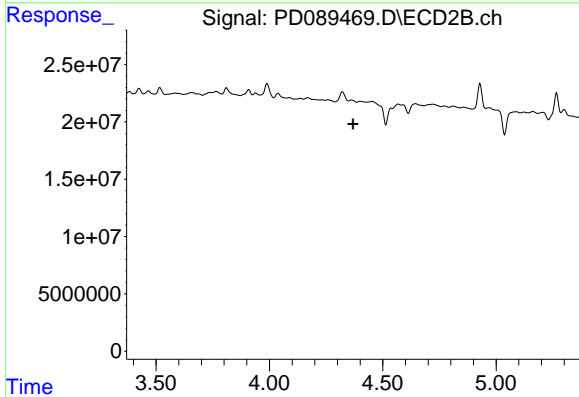
#4 Heptachlor

R.T.: 4.088 min  
 Delta R.T.: 0.005 min  
 Response: 1024982  
 Conc: 0.04 ng/ml

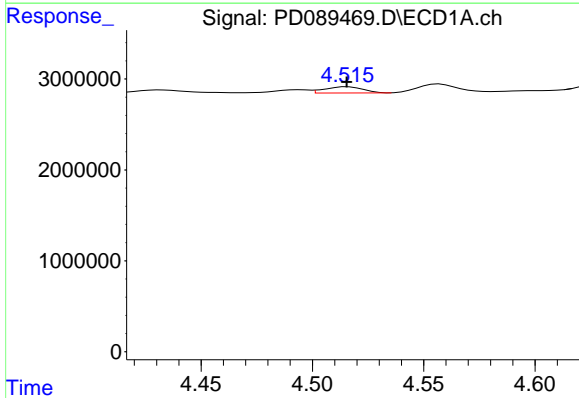


#5 Aldrin  
 R.T.: 5.256 min  
 Delta R.T.: -0.015 min  
 Response: 213634  
 Conc: 0.04 ng/ml

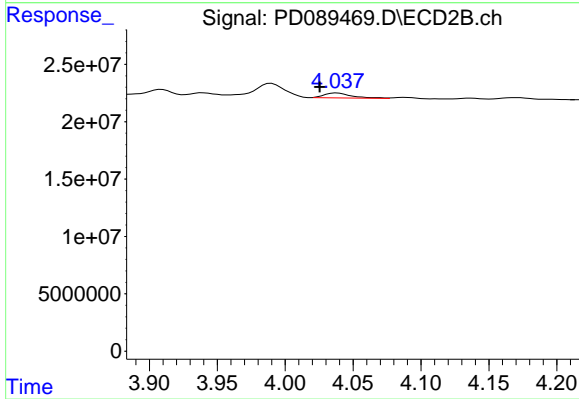
Instrument :  
 ECD\_D  
 ClientSampleId :  
 TP-17



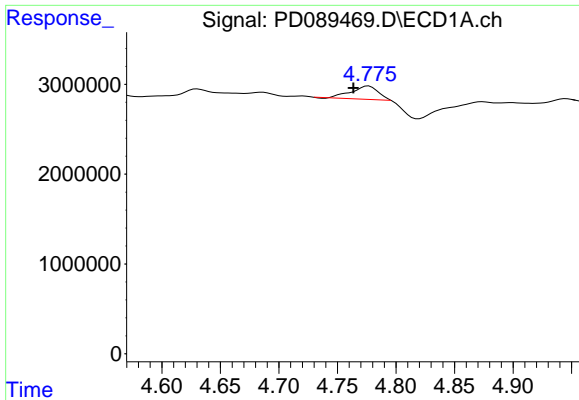
#5 Aldrin  
 R.T.: 4.364 min  
 Delta R.T.: -0.005 min  
 Response: -1116332  
 Conc: N.D.



#6 beta-BHC  
 R.T.: 4.516 min  
 Delta R.T.: 0.000 min  
 Response: 808728  
 Conc: 0.37 ng/ml



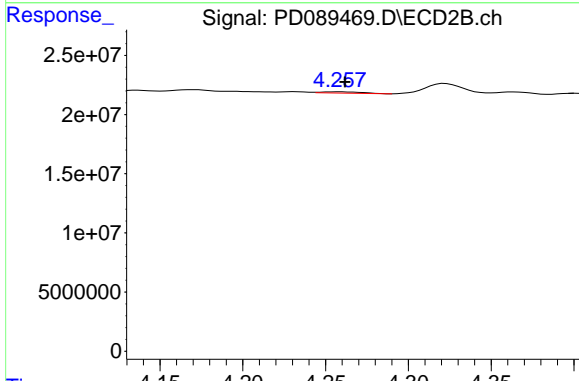
#6 beta-BHC  
 R.T.: 4.038 min  
 Delta R.T.: 0.013 min  
 Response: 5851691  
 Conc: 0.54 ng/ml



#7 delta-BHC

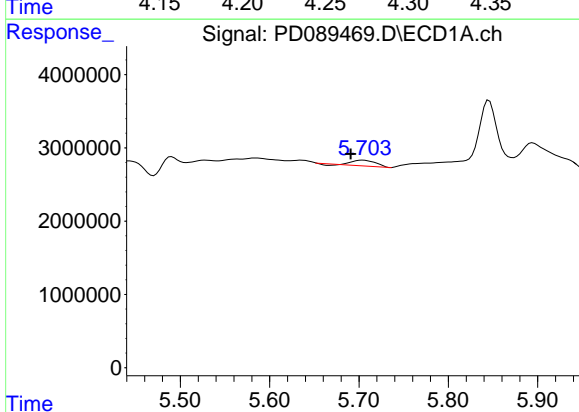
R.T.: 4.777 min  
 Delta R.T.: 0.013 min  
 Response: 2308082  
 Conc: 0.45 ng/ml

Instrument :  
 ECD\_D  
 ClientSampleId :  
 TP-17



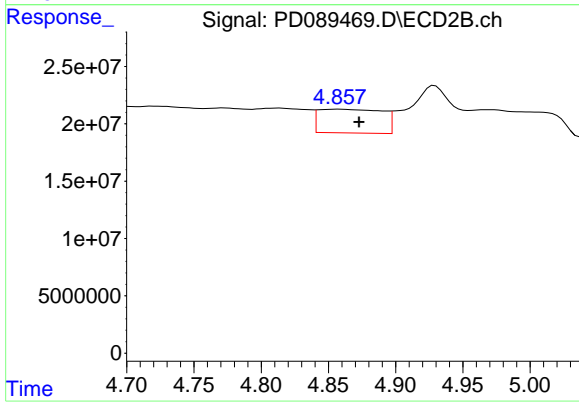
#7 delta-BHC

R.T.: 4.258 min  
 Delta R.T.: -0.004 min  
 Response: 1852315  
 Conc: 0.07 ng/ml



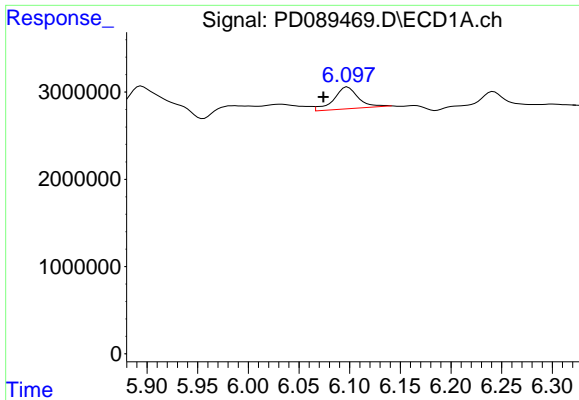
#8 Heptachlor epoxide

R.T.: 5.705 min  
 Delta R.T.: 0.014 min  
 Response: 1334054  
 Conc: 0.28 ng/ml



#8 Heptachlor epoxide

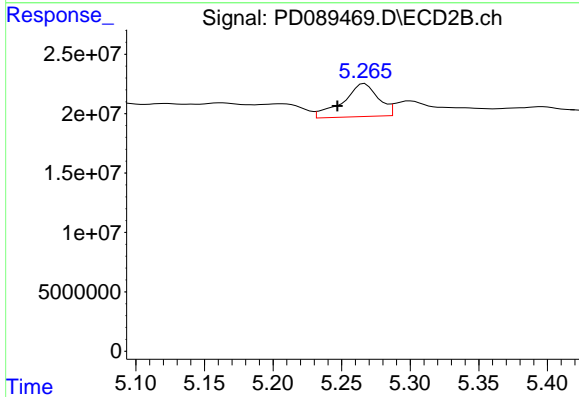
R.T.: 4.857 min  
 Delta R.T.: -0.016 min  
 Response: 68195115  
 Conc: 3.11 ng/ml



#9 Endosulfan I

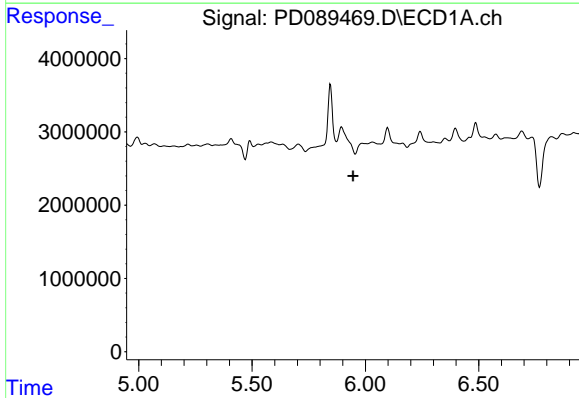
R.T.: 6.098 min  
 Delta R.T.: 0.024 min  
 Response: 4008736  
 Conc: 0.89 ng/ml

Instrument :  
 ECD\_D  
 ClientSampleId :  
 TP-17



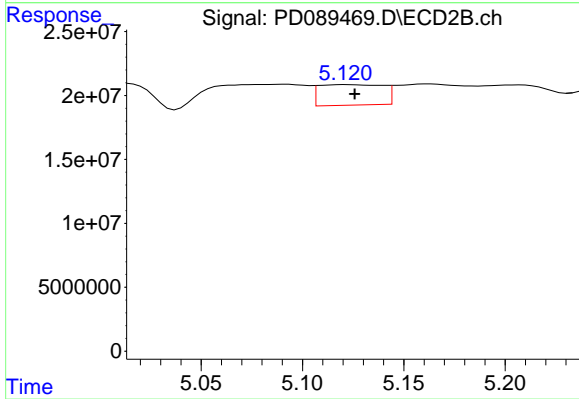
#9 Endosulfan I

R.T.: 5.267 min  
 Delta R.T.: 0.020 min  
 Response: 49546563  
 Conc: 2.38 ng/ml



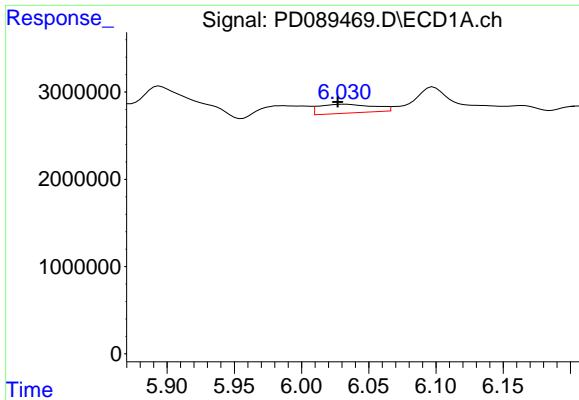
#10 gamma-Chlordane

R.T.: 0.000 min  
 Exp R.T. : 5.946 min  
 Response: 0  
 Conc: N.D.



#10 gamma-Chlordane

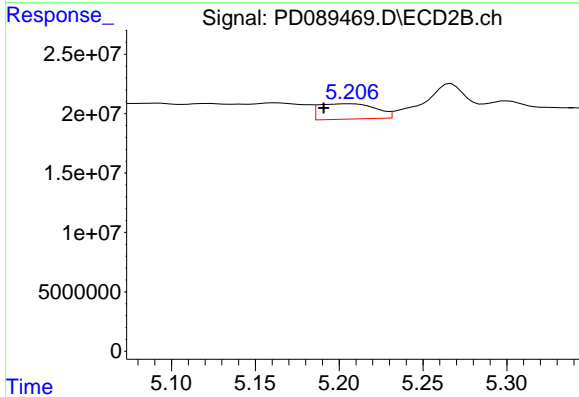
R.T.: 5.122 min  
 Delta R.T.: -0.004 min  
 Response: 35258273  
 Conc: 1.47 ng/ml



#11 alpha-Chlordane

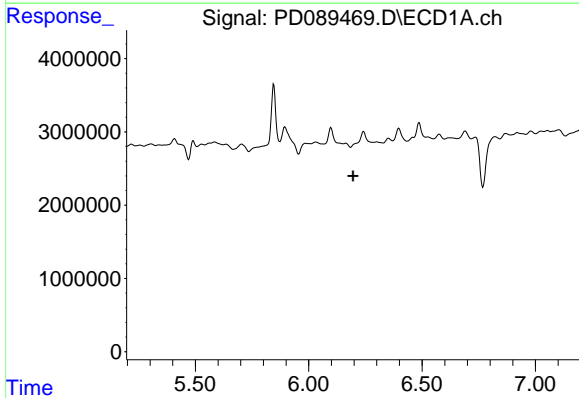
R.T.: 6.032 min  
 Delta R.T.: 0.005 min  
 Response: 2866349  
 Conc: 0.59 ng/ml

Instrument :  
 ECD\_D  
 ClientSampleId :  
 TP-17



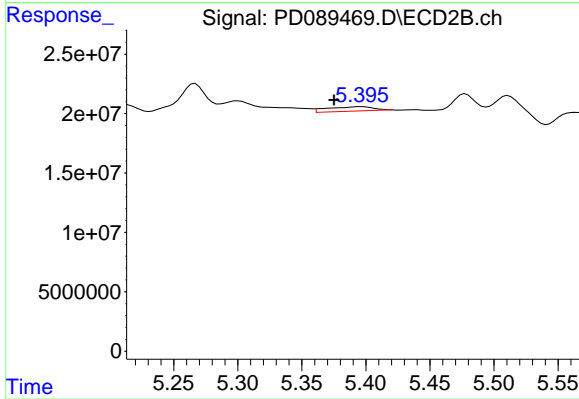
#11 alpha-Chlordane

R.T.: 5.207 min  
 Delta R.T.: 0.016 min  
 Response: 30474675  
 Conc: 1.33 ng/ml



#12 4,4'-DDE

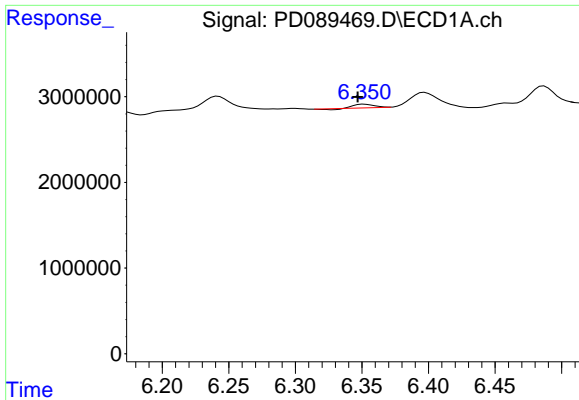
R.T.: 0.000 min  
 Exp R.T. : 6.195 min  
 Response: 0  
 Conc: N.D.



#12 4,4'-DDE

R.T.: 5.396 min  
 Delta R.T.: 0.021 min  
 Response: 8037867  
 Conc: 0.35 ng/ml

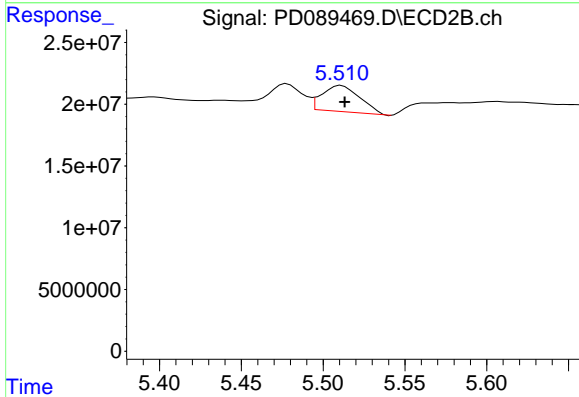




#13 Dieldrin

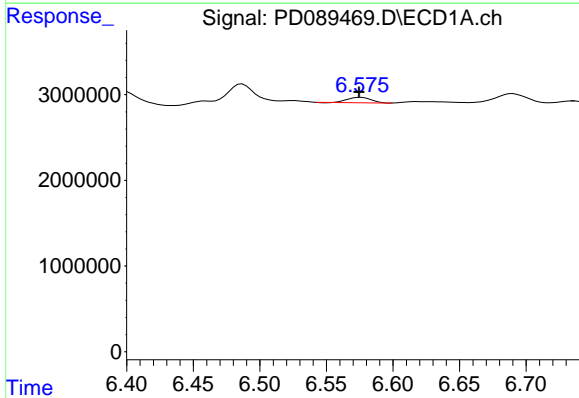
R.T.: 6.352 min  
 Delta R.T.: 0.005 min  
 Response: 366012  
 Conc: 0.08 ng/ml

Instrument : ECD\_D  
 ClientSampleId : TP-17



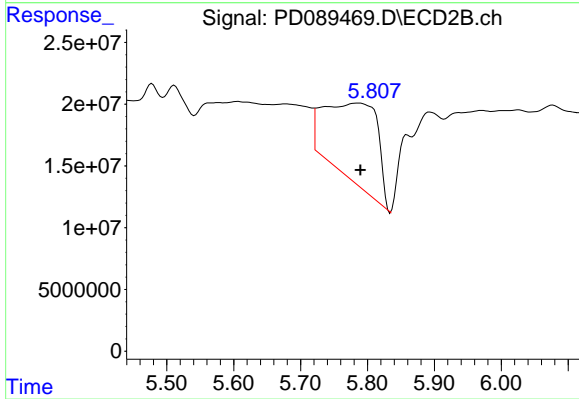
#13 Dieldrin

R.T.: 5.511 min  
 Delta R.T.: -0.002 min  
 Response: 33915577  
 Conc: 1.46 ng/ml



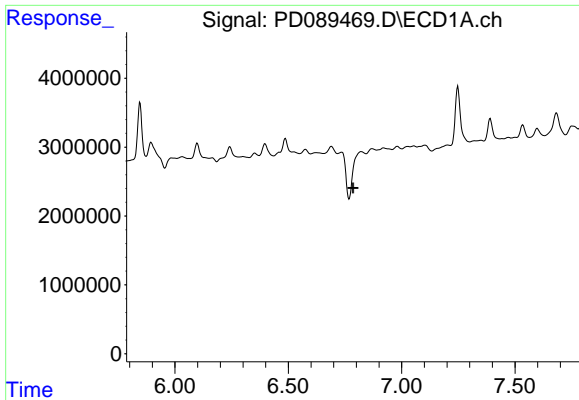
#14 Endrin

R.T.: 6.576 min  
 Delta R.T.: 0.002 min  
 Response: 753072  
 Conc: 0.18 ng/ml



#14 Endrin

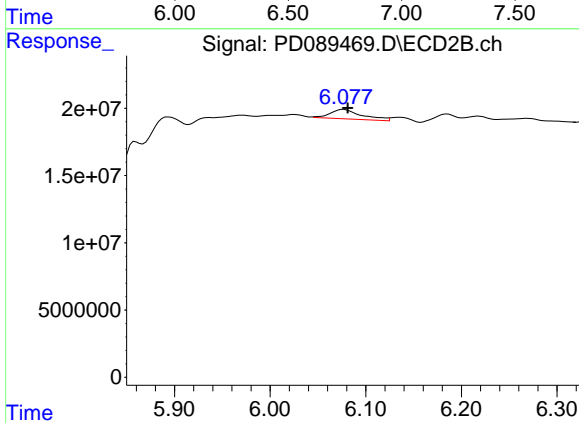
R.T.: 5.785 min  
 Delta R.T.: -0.004 min  
 Response: 349777491  
 Conc: 16.11 ng/ml



#15 Endosulfan II

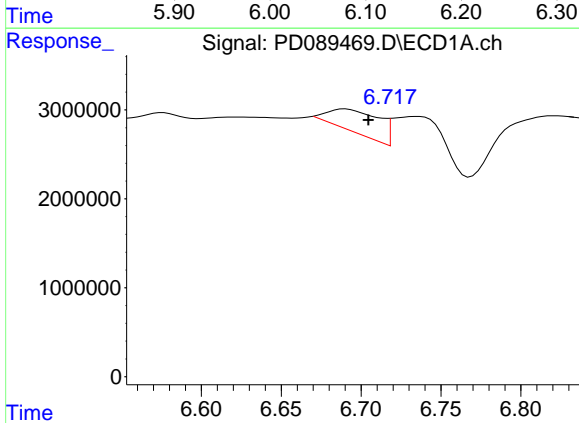
R.T.: 0.000 min  
 Exp R.T.: 6.786 min  
 Response: 0  
 Conc: N.D.

Instrument :  
 ECD\_D  
 ClientSampleId :  
 TP-17



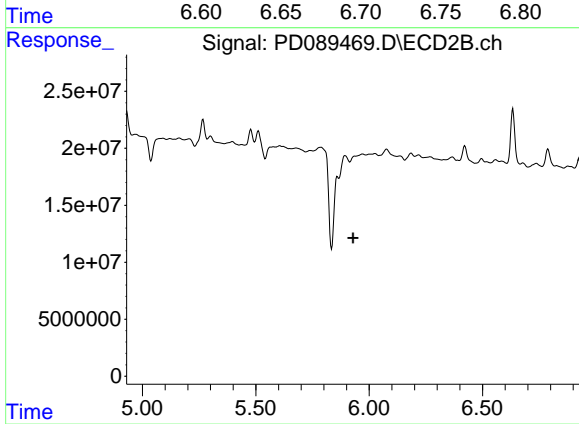
#15 Endosulfan II

R.T.: 6.077 min  
 Delta R.T.: -0.004 min  
 Response: 16471016  
 Conc: 0.82 ng/ml



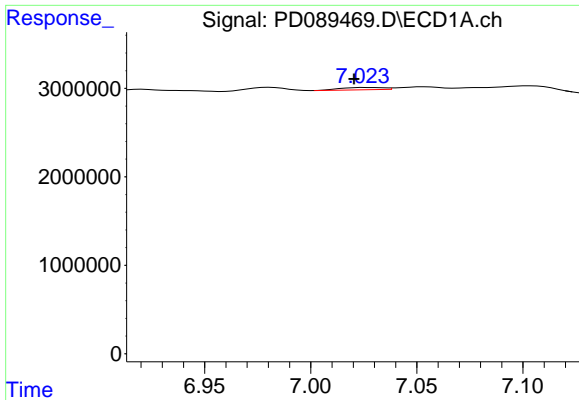
#16 4,4'-DDD

R.T.: 6.690 min  
 Delta R.T.: -0.015 min  
 Response: 5785038  
 Conc: 1.69 ng/ml



#16 4,4'-DDD

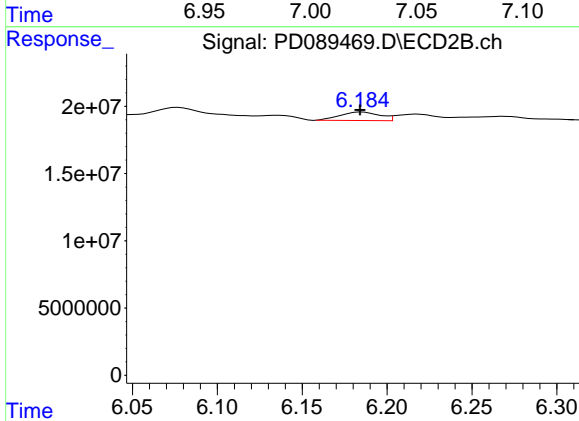
R.T.: 0.000 min  
 Exp R.T.: 5.930 min  
 Response: 0  
 Conc: N.D.



#17 4,4'-DDT

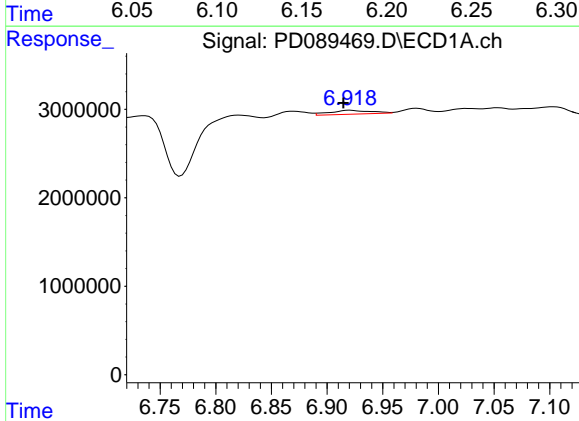
R.T.: 7.027 min  
 Delta R.T.: 0.006 min  
 Response: 343967  
 Conc: 0.09 ng/ml

Instrument :  
 ECD\_D  
 ClientSampleId :  
 TP-17



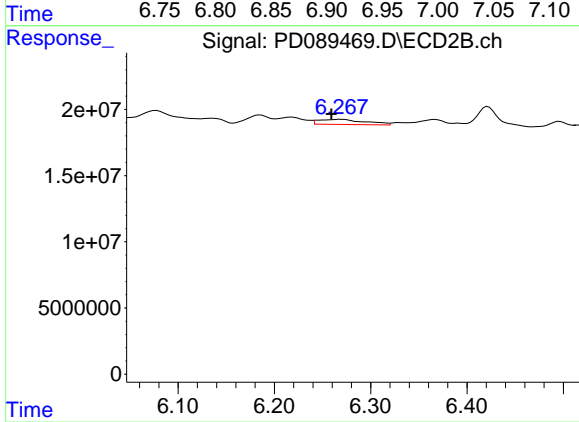
#17 4,4'-DDT

R.T.: 6.185 min  
 Delta R.T.: 0.001 min  
 Response: 10408357  
 Conc: 0.51 ng/ml



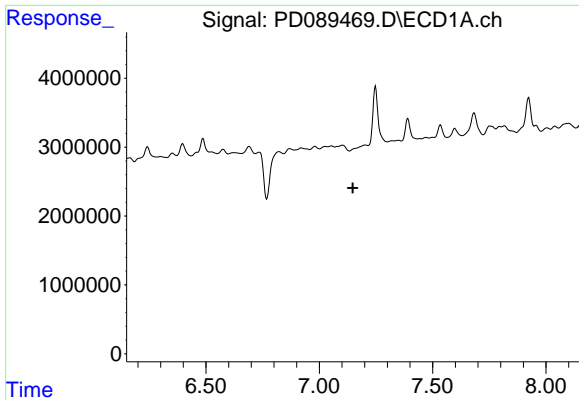
#18 Endrin aldehyde

R.T.: 6.920 min  
 Delta R.T.: 0.006 min  
 Response: 1130295  
 Conc: 0.37 ng/ml



#18 Endrin aldehyde

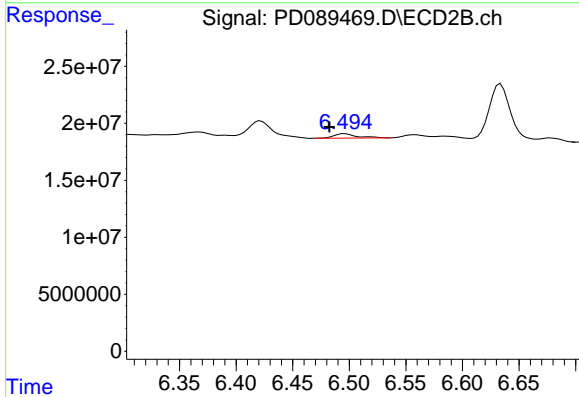
R.T.: 6.268 min  
 Delta R.T.: 0.009 min  
 Response: 12908011  
 Conc: 0.84 ng/ml



#19 Endosulfan Sulfate

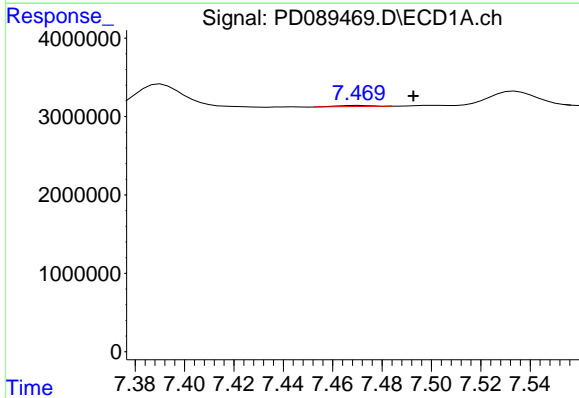
R.T.: 0.000 min  
 Exp R.T.: 7.148 min  
 Response: 0  
 Conc: N.D.

Instrument :  
 ECD\_D  
 ClientSampleId :  
 TP-17



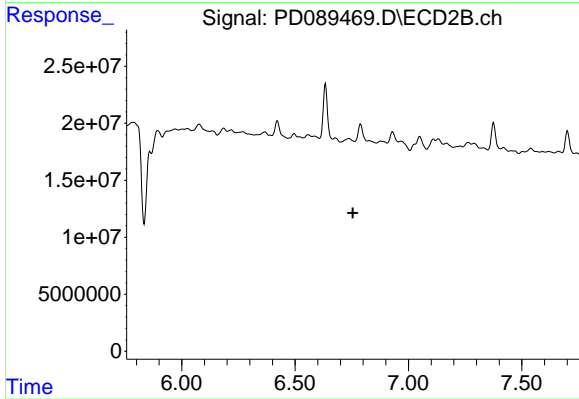
#19 Endosulfan Sulfate

R.T.: 6.496 min  
 Delta R.T.: 0.014 min  
 Response: 5435829  
 Conc: 0.28 ng/ml



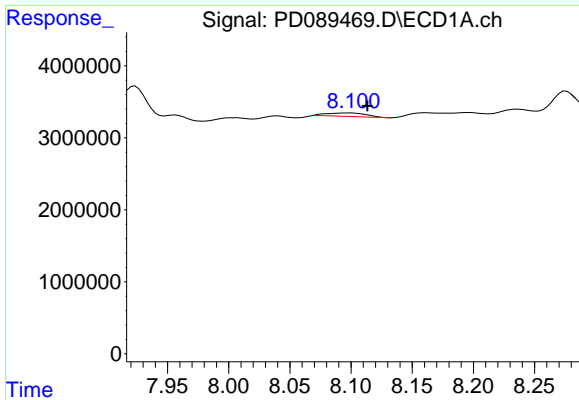
#20 Methoxychlor

R.T.: 7.471 min  
 Delta R.T.: -0.022 min  
 Response: 140916  
 Conc: 0.07 ng/ml



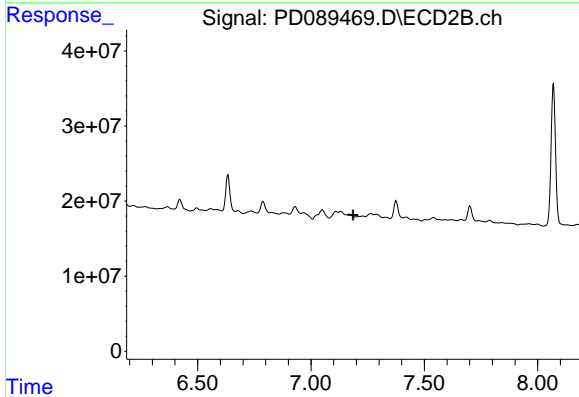
#20 Methoxychlor

R.T.: 6.737 min  
 Delta R.T.: -0.018 min  
 Response: -1187637  
 Conc: N.D.

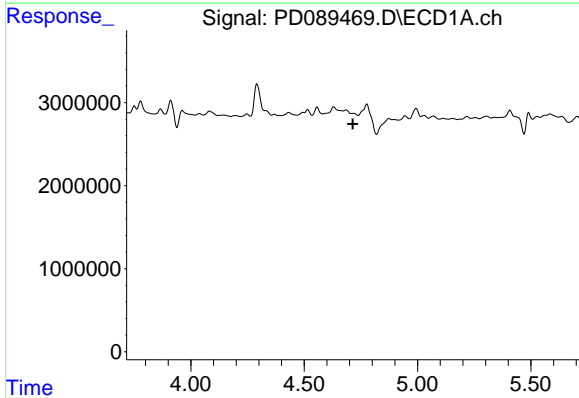


#22 Mirex  
 R.T.: 8.098 min  
 Delta R.T.: -0.016 min  
 Response: 1079377  
 Conc: 0.36 ng/ml

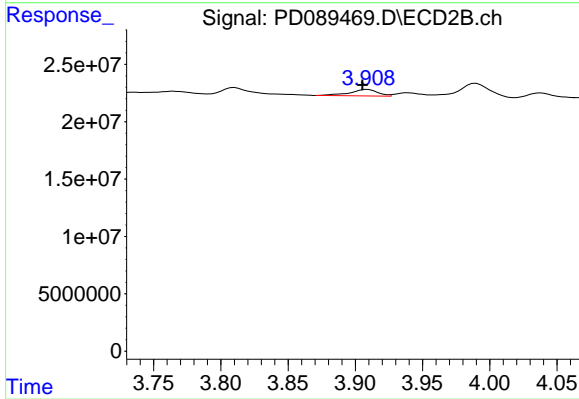
Instrument :  
 ECD\_D  
 ClientSampleId :  
 TP-17



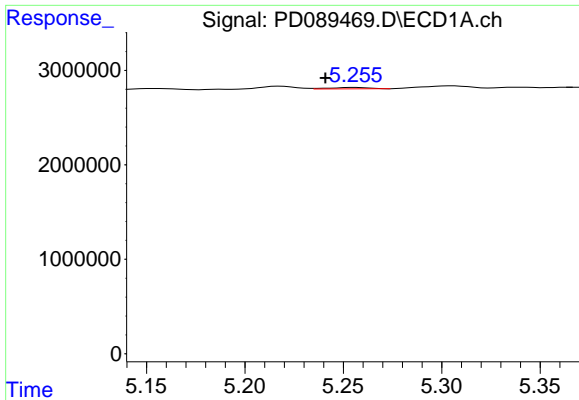
#22 Mirex  
 R.T.: 0.000 min  
 Exp R.T. : 7.186 min  
 Response: 0  
 Conc: N.D.



#23 Chlordane-1  
 R.T.: 0.000 min  
 Exp R.T. : 4.715 min  
 Response: 0  
 Conc: N.D.



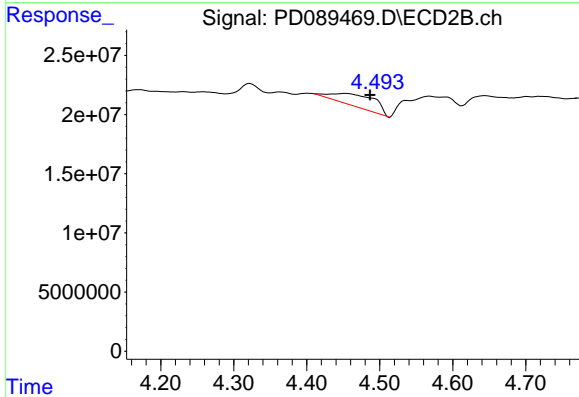
#23 Chlordane-1  
 R.T.: 3.909 min  
 Delta R.T.: 0.004 min  
 Response: 8237147  
 Conc: 8.84 ng/ml



#24 Chlordane-2

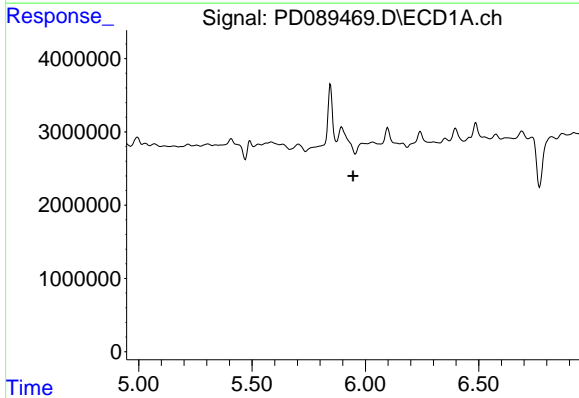
R.T.: 5.256 min  
 Delta R.T.: 0.015 min  
 Response: 213634  
 Conc: 0.98 ng/ml

Instrument :  
 ECD\_D  
 ClientSampleId :  
 TP-17



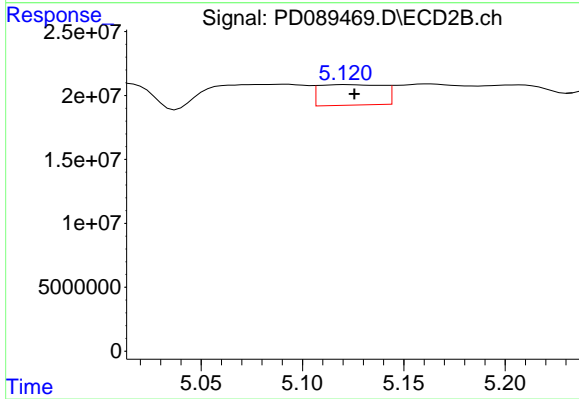
#24 Chlordane-2

R.T.: 4.453 min  
 Delta R.T.: -0.033 min  
 Response: 43172662  
 Conc: 45.37 ng/ml



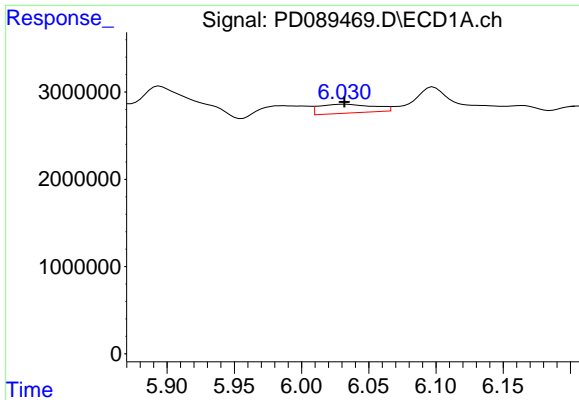
#25 Chlordane-3

R.T.: 0.000 min  
 Exp R.T. : 5.946 min  
 Response: 0  
 Conc: N.D.



#25 Chlordane-3

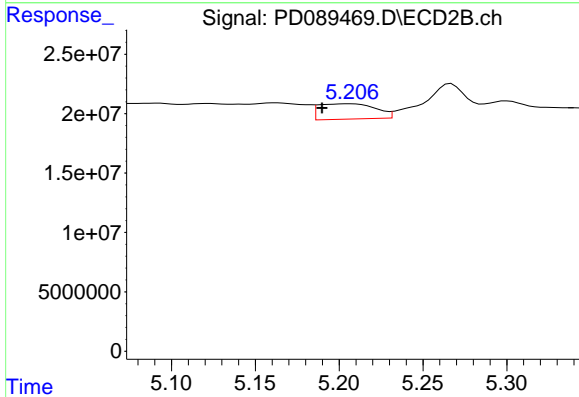
R.T.: 5.122 min  
 Delta R.T.: -0.004 min  
 Response: 35258273  
 Conc: 11.87 ng/ml



#26 Chlordane-4

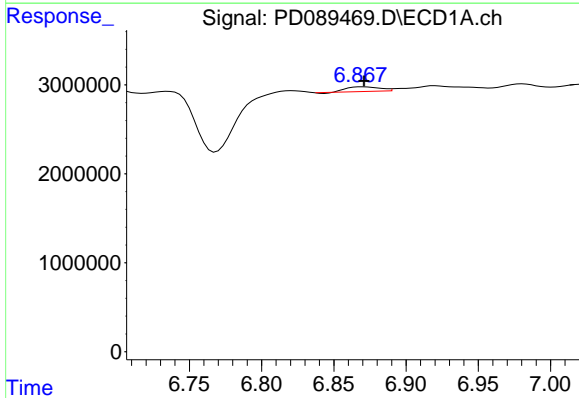
R.T.: 6.032 min  
 Delta R.T.: 0.000 min  
 Response: 2866349  
 Conc: 2.73 ng/ml

Instrument :  
 ECD\_D  
 ClientSampleId :  
 TP-17



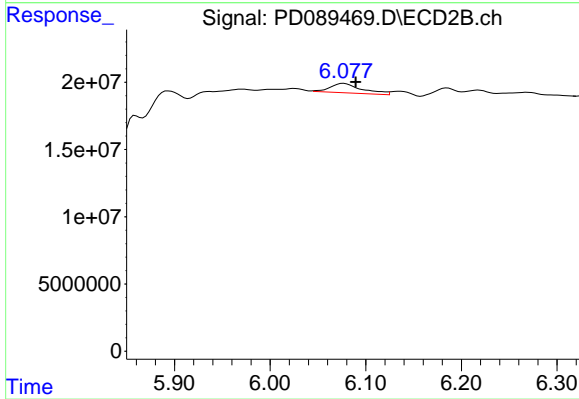
#26 Chlordane-4

R.T.: 5.207 min  
 Delta R.T.: 0.017 min  
 Response: 30474675  
 Conc: 12.16 ng/ml



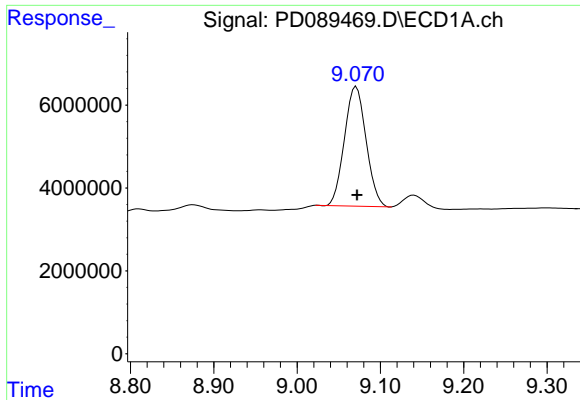
#27 Chlordane-5

R.T.: 6.870 min  
 Delta R.T.: -0.001 min  
 Response: 823828  
 Conc: 4.51 ng/ml



#27 Chlordane-5

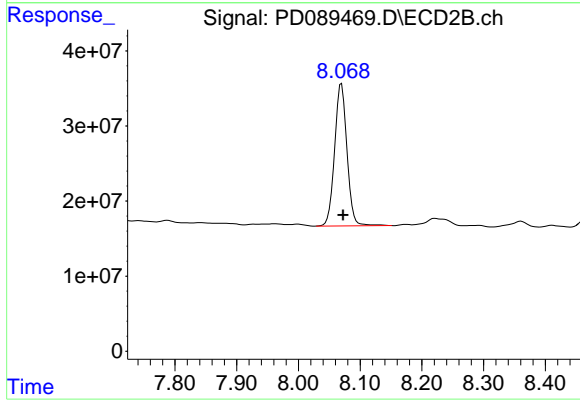
R.T.: 6.077 min  
 Delta R.T.: -0.012 min  
 Response: 16471016  
 Conc: 14.55 ng/ml



#28 Decachlorobiphenyl

R.T.: 9.071 min  
Delta R.T.: 0.000 min  
Response: 52049080  
Conc: 13.25 ng/ml

Instrument :  
ECD\_D  
ClientSampleId :  
TP-17



#28 Decachlorobiphenyl

R.T.: 8.070 min  
Delta R.T.: -0.002 min  
Response: 263667766  
Conc: 13.34 ng/ml