

Data Path : Z:\pestpcbsrv\HPCHEM1\ECD_D\Data\PD071125\
 Data File : PD089470.D
 Signal(s) : Signal #1: ECD1A.ch Signal #2: ECD2B.ch
 Acq On : 11 Jul 2025 16:53
 Operator : AR\AJ
 Sample : I.BLK
 Misc :
 ALS Vial : 2 Sample Multiplier: 1

Instrument :
 ECD_D
 ClientSampleId :

Integration File signal 1: autoint1.e
 Integration File signal 2: autoint2.e
 Quant Time: Jul 11 22:55:42 2025
 Quant Method : Z:\pestpcbsrv\HPCHEM1\ECD_D\Method\PD061825.M
 Quant Title : GC Extractables
 QLast Update : Wed Jun 18 05:39:05 2025
 Response via : Initial Calibration
 Integrator: ChemStation

Volume Inj. : 1 µl
 Signal #1 Phase : ZB-MR2 Signal #2 Phase: ZB-MR2
 Signal #1 Info : 30M x 0.32mm x0.5 Signal #2 Info : 30M x 0.32mm x 0.25µm

	Compound	RT#1	RT#2	Resp#1	Resp#2	ng/ml	ng/ml

System Monitoring Compounds							
1)	SA Tetrachlo...	3.550	2.880	56086980	388.4E6	19.658	22.908
28)	SA Decachlor...	9.071	8.069	76083022	366.7E6	19.371	18.550
Target Compounds							
2)	A alpha-BHC	0.000	3.383	0	7480832	N.D.	0.279 #
3)	MA gamma-BHC...	0.000	3.718	0	191812	N.D.	0.008 #
4)	MA Heptachlor	4.922	4.089	222315	817520	0.041	0.033
5)	MB Aldrin	5.279	4.381	14824	527763	0.003	0.022 #
6)	B beta-BHC	0.000	4.038	0	1325669	N.D.	0.123 #
7)	B delta-BHC	4.778	4.250	3160157	1051459	0.616	0.042 #
8)	Heptachlo...	5.683	4.866	1668873	56980043	0.346	2.602 #
9)	A Endosulfan I	6.059	5.229f	276753	10254194	0.061	0.492 #
10)	B gamma-Chl...	0.000	5.123	0	40129520	N.D.	1.677 #
11)	B alpha-Chl...	6.030	5.180	273699	30235343	0.057	1.321 #
12)	B 4,4'-DDE	0.000	5.367	0	5486714	N.D.	0.239 #
14)	MA Endrin	0.000	5.793	0	100.1E6	N.D.	4.610 #
15)	B Endosulfa...	6.769f	6.088	1291877	1648994	0.320	0.082 #
16)	A 4,4'-DDD	6.705	5.934	578022	-1447296	0.168	N.D. #
17)	MA 4,4'-DDT	7.021	6.170	1233673	2102036	0.326	0.104 #
18)	B Endrin al...	6.920	6.256	693409	3961182	0.226	0.259
19)	B Endosulfa...	0.000	6.481	0	662300	N.D.	0.034 #
20)	A Methoxychlor	7.523f	6.747	619450	602374	0.307	0.056 #
22)	Mirex	8.112	7.179	521575	3489311	0.172	0.209
23)	Chlordane-1	0.000	3.941f	0	1460353	N.D.	1.566 #
24)	Chlordane-2	5.257	4.504	223224	36352263	1.022	38.201 #
25)	Chlordane-3	0.000	5.123	0	40129520	N.D.	13.511 #
26)	Chlordane-4	6.030	5.180	273699	30235343	0.260	12.062 #
27)	Chlordane-5	6.881	6.088	298788	1648994	1.635	1.457

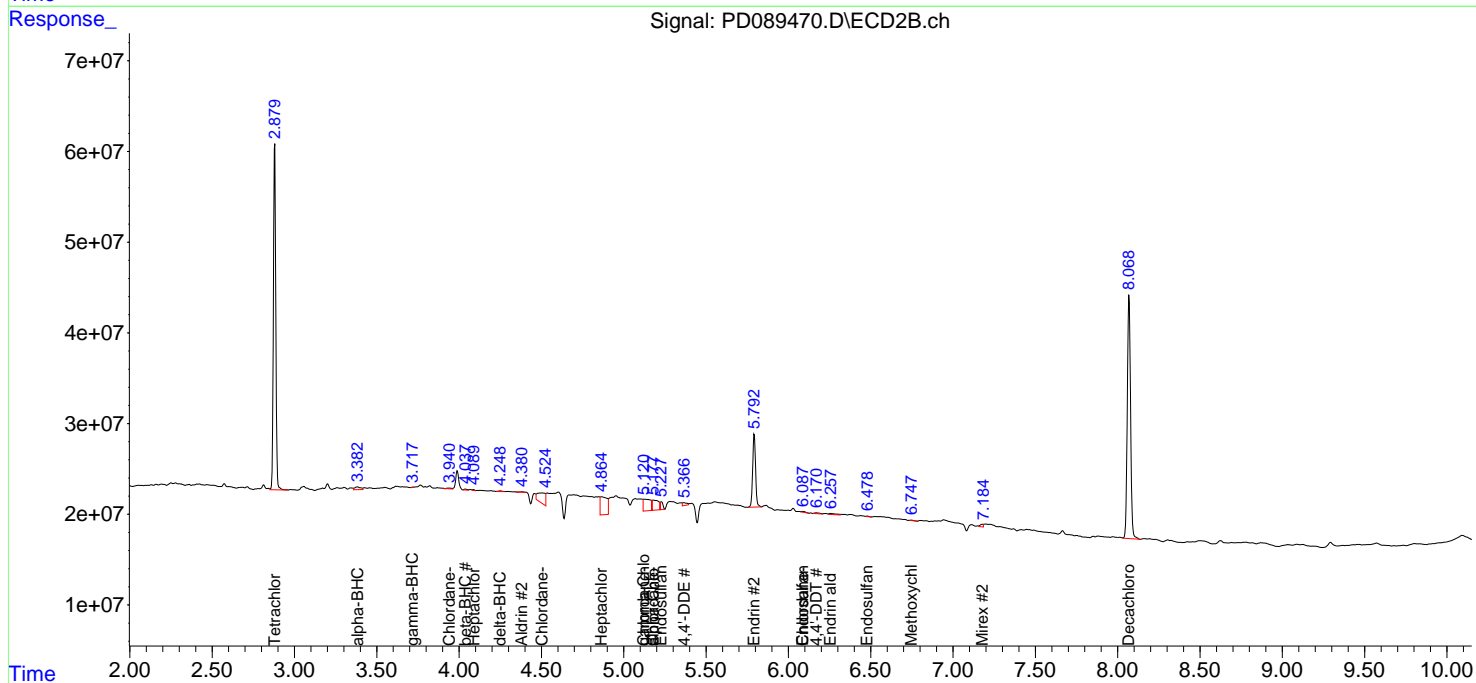
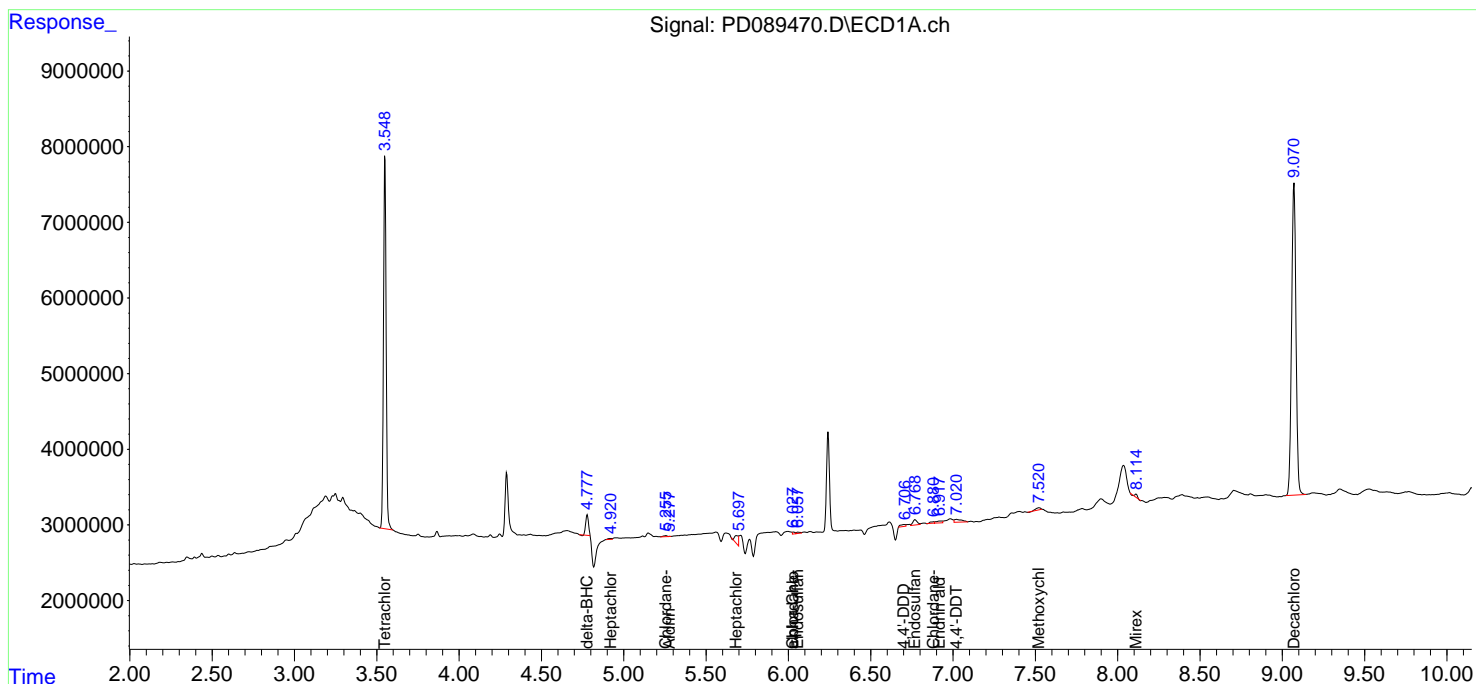
(f)=RT Delta > 1/2 Window (#)=Amounts differ by > 25% (m)=manual int.

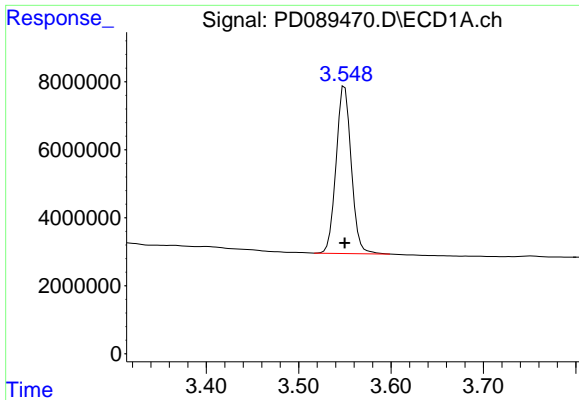
Data Path : Z:\pestpcbsrv\HPCHEM1\ECD_D\Data\PD071125\
 Data File : PD089470.D
 Signal(s) : Signal #1: ECD1A.ch Signal #2: ECD2B.ch
 Acq On : 11 Jul 2025 16:53
 Operator : AR\AJ
 Sample : I.BLK
 Misc :
 ALS Vial : 2 Sample Multiplier: 1

Instrument :
 ECD_D
 ClientSampleId :

Integration File signal 1: autoint1.e
 Integration File signal 2: autoint2.e
 Quant Time: Jul 11 22:55:42 2025
 Quant Method : Z:\pestpcbsrv\HPCHEM1\ECD_D\Method\PD061825.M
 Quant Title : GC Extractables
 QLast Update : Wed Jun 18 05:39:05 2025
 Response via : Initial Calibration
 Integrator: ChemStation

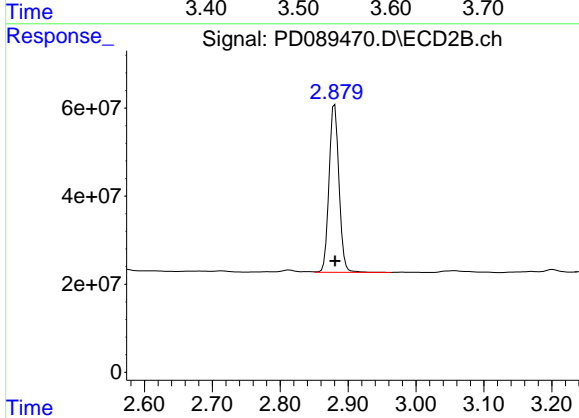
Volume Inj. : 1 µl
 Signal #1 Phase : ZB-MR1 Signal #2 Phase: ZB-MR2
 Signal #1 Info : 30M x 0.32mm x0.5 Signal #2 Info : 30M x 0.32mm x 0.25µm



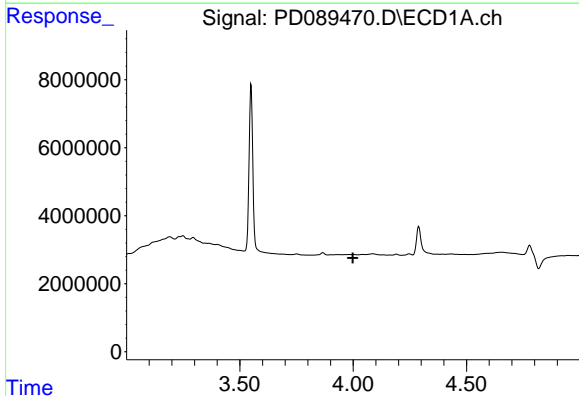


#1 Tetrachloro-m-xylene
 R.T.: 3.550 min
 Delta R.T.: 0.000 min
 Response: 56086980
 Conc: 19.66 ng/ml

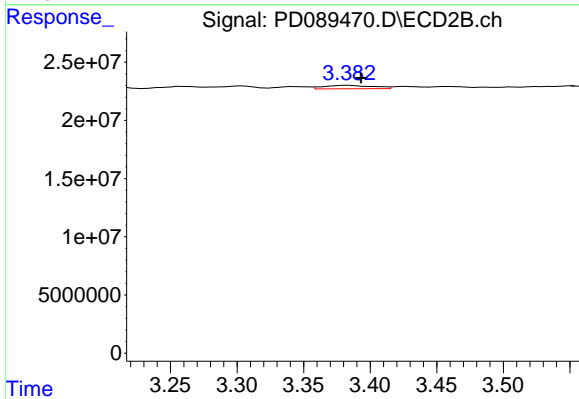
Instrument :
 ECD_D
 ClientSampleId :



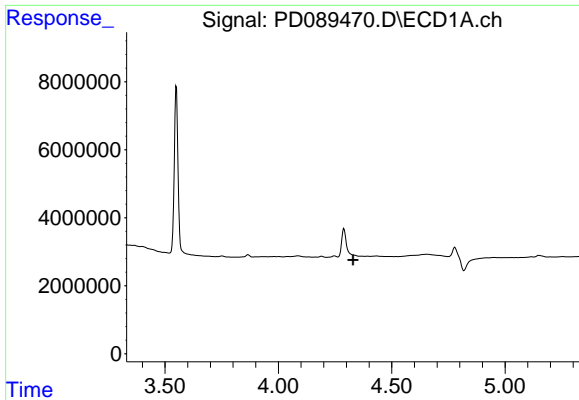
#1 Tetrachloro-m-xylene
 R.T.: 2.880 min
 Delta R.T.: 0.000 min
 Response: 388358248
 Conc: 22.91 ng/ml



#2 alpha-BHC
 R.T.: 0.000 min
 Exp R.T. : 3.999 min
 Response: 0
 Conc: N.D.



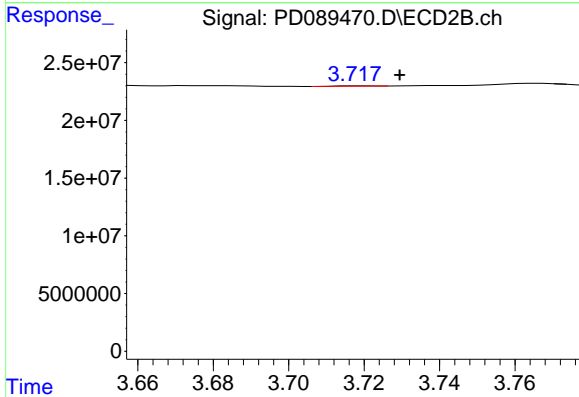
#2 alpha-BHC
 R.T.: 3.383 min
 Delta R.T.: -0.010 min
 Response: 7480832
 Conc: 0.28 ng/ml



#3 gamma-BHC (Lindane)

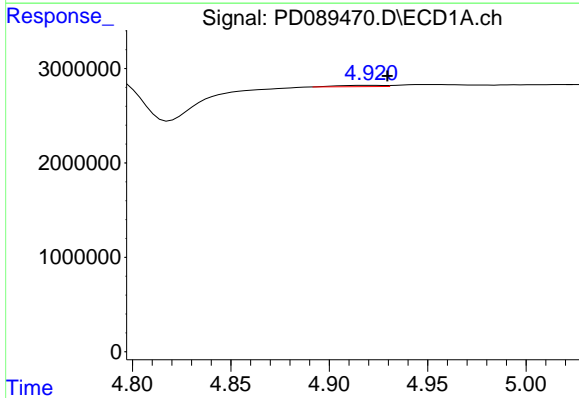
R.T.: 0.000 min
 Exp R.T.: 4.330 min
 Response: 0
 Conc: N.D.

Instrument :
 ECD_D
 ClientSampleId :



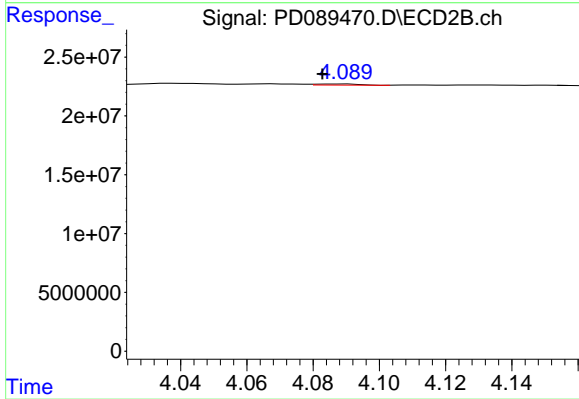
#3 gamma-BHC (Lindane)

R.T.: 3.718 min
 Delta R.T.: -0.011 min
 Response: 191812
 Conc: 0.01 ng/ml



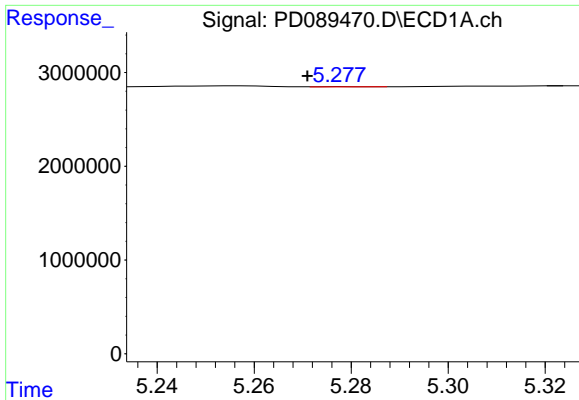
#4 Heptachlor

R.T.: 4.922 min
 Delta R.T.: -0.008 min
 Response: 222315
 Conc: 0.04 ng/ml



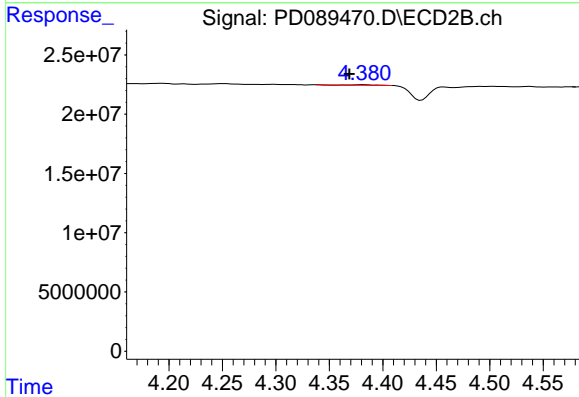
#4 Heptachlor

R.T.: 4.089 min
 Delta R.T.: 0.007 min
 Response: 817520
 Conc: 0.03 ng/ml

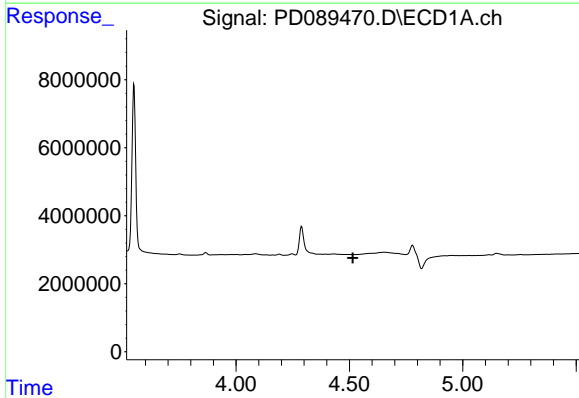


#5 Aldrin
 R.T.: 5.279 min
 Delta R.T.: 0.008 min
 Response: 14824
 Conc: 0.00 ng/ml

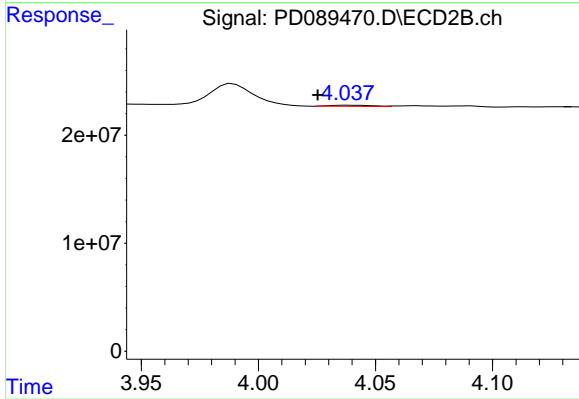
Instrument :
 ECD_D
 ClientSampleId :



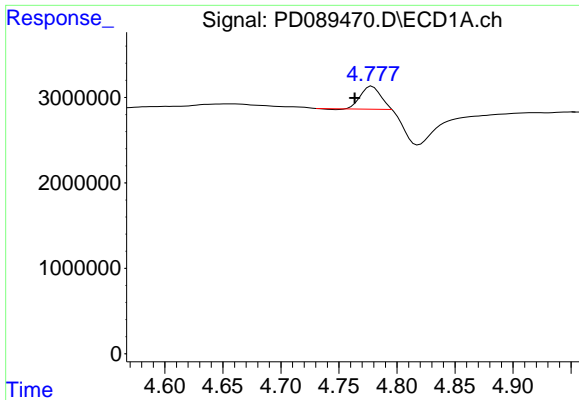
#5 Aldrin
 R.T.: 4.381 min
 Delta R.T.: 0.013 min
 Response: 527763
 Conc: 0.02 ng/ml



#6 beta-BHC
 R.T.: 0.000 min
 Exp R.T. : 4.515 min
 Response: 0
 Conc: N.D.



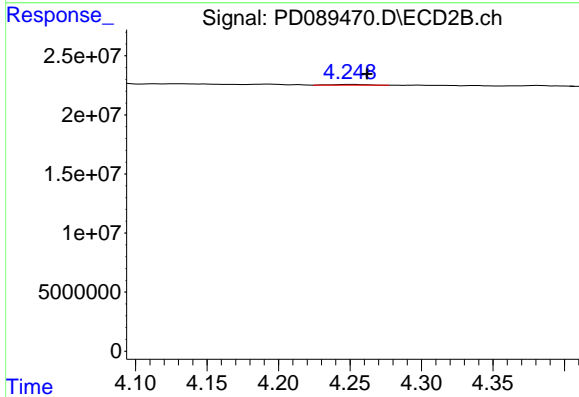
#6 beta-BHC
 R.T.: 4.038 min
 Delta R.T.: 0.013 min
 Response: 1325669
 Conc: 0.12 ng/ml



#7 delta-BHC

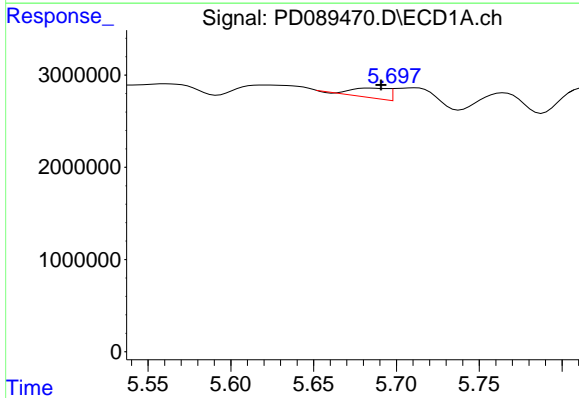
R.T.: 4.778 min
 Delta R.T.: 0.015 min
 Response: 3160157
 Conc: 0.62 ng/ml

Instrument :
 ECD_D
 ClientSampleId :



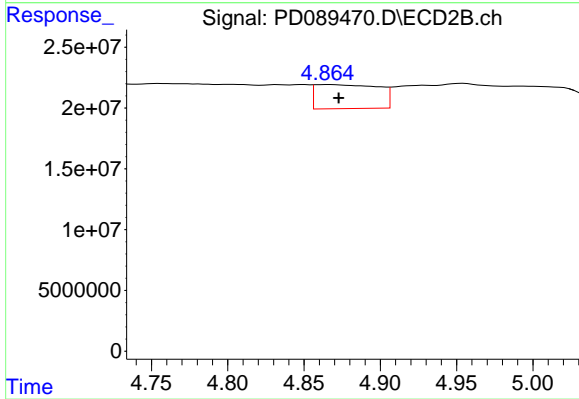
#7 delta-BHC

R.T.: 4.250 min
 Delta R.T.: -0.012 min
 Response: 1051459
 Conc: 0.04 ng/ml



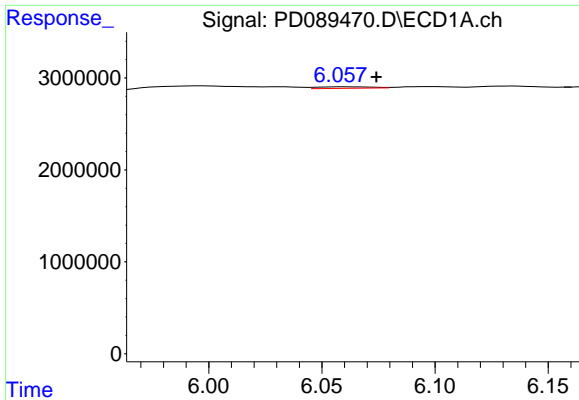
#8 Heptachlor epoxide

R.T.: 5.683 min
 Delta R.T.: -0.007 min
 Response: 1668873
 Conc: 0.35 ng/ml



#8 Heptachlor epoxide

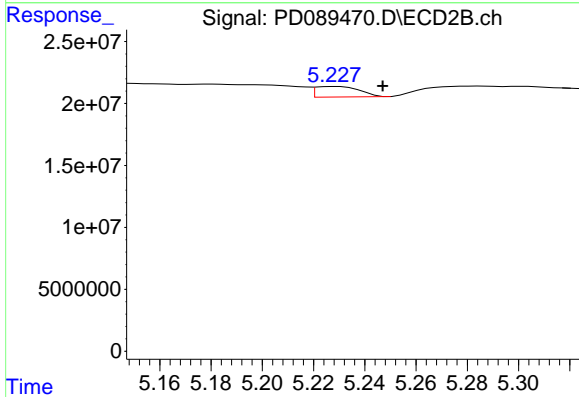
R.T.: 4.866 min
 Delta R.T.: -0.007 min
 Response: 56980043
 Conc: 2.60 ng/ml



#9 Endosulfan I

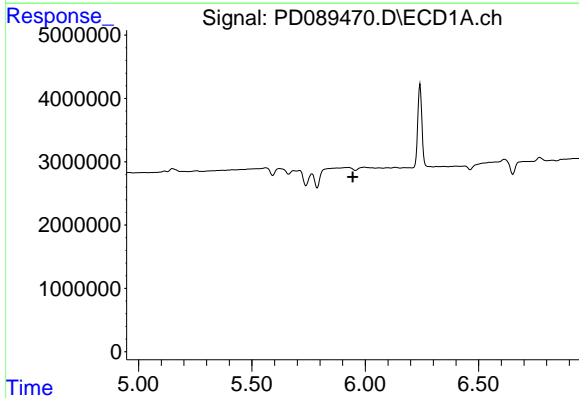
R.T.: 6.059 min
 Delta R.T.: -0.015 min
 Response: 276753
 Conc: 0.06 ng/ml

Instrument :
 ECD_D
 ClientSampleId :



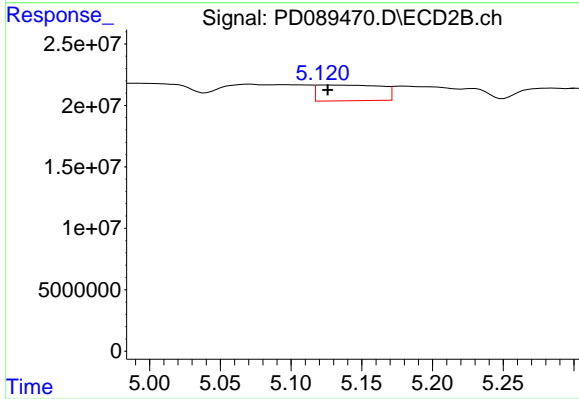
#9 Endosulfan I

R.T.: 5.229 min
 Delta R.T.: -0.018 min
 Response: 10254194
 Conc: 0.49 ng/ml



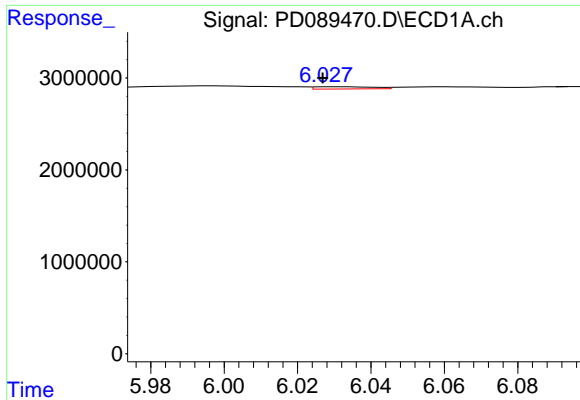
#10 gamma-Chlordane

R.T.: 0.000 min
 Exp R.T. : 5.946 min
 Response: 0
 Conc: N.D.



#10 gamma-Chlordane

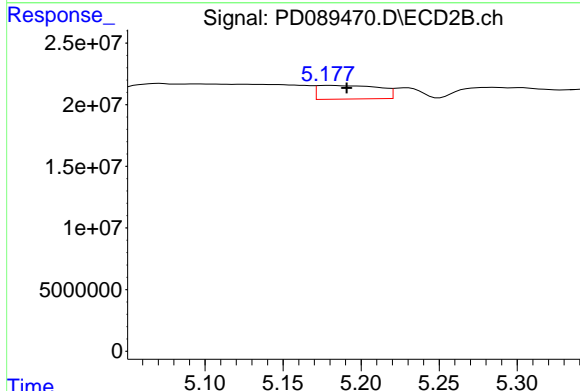
R.T.: 5.123 min
 Delta R.T.: -0.003 min
 Response: 40129520
 Conc: 1.68 ng/ml



#11 alpha-Chlordane

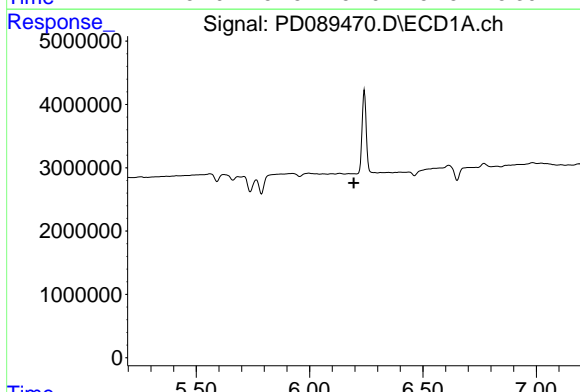
R.T.: 6.030 min
 Delta R.T.: 0.003 min
 Response: 273699
 Conc: 0.06 ng/ml

Instrument :
 ECD_D
 ClientSampleId :



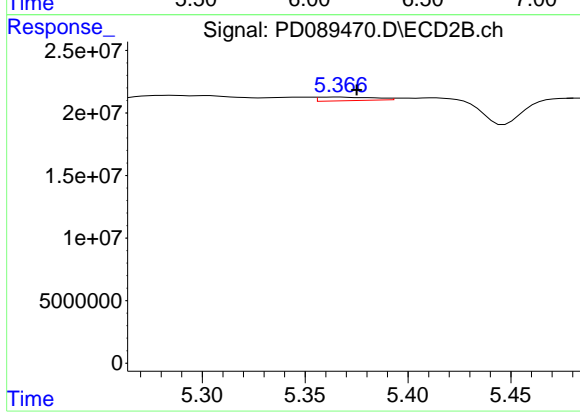
#11 alpha-Chlordane

R.T.: 5.180 min
 Delta R.T.: -0.011 min
 Response: 30235343
 Conc: 1.32 ng/ml



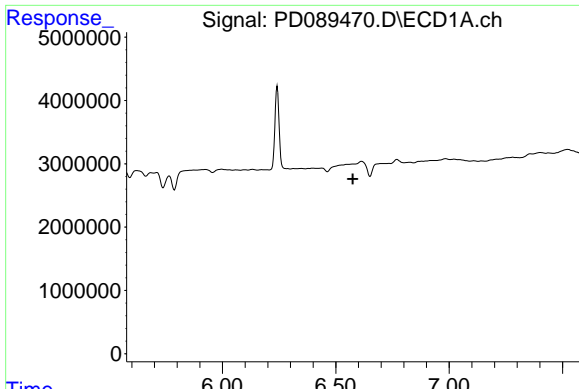
#12 4,4'-DDE

R.T.: 0.000 min
 Exp R.T. : 6.195 min
 Response: 0
 Conc: N.D.



#12 4,4'-DDE

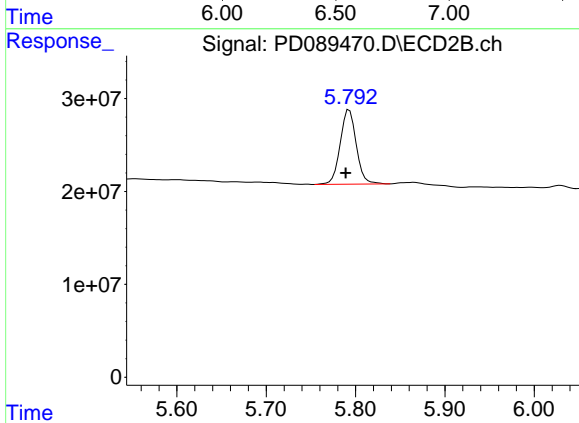
R.T.: 5.367 min
 Delta R.T.: -0.008 min
 Response: 5486714
 Conc: 0.24 ng/ml



#14 Endrin

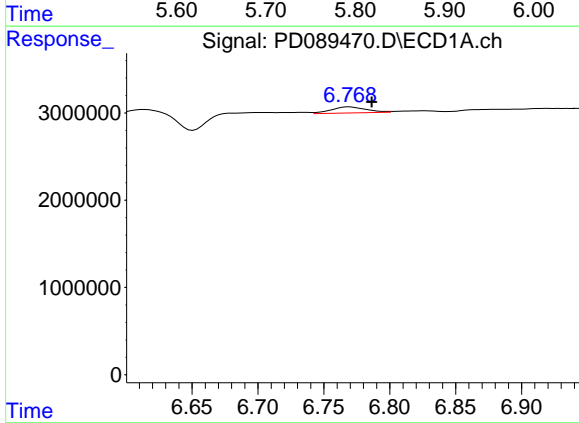
R.T.: 0.000 min
 Exp R.T.: 6.574 min
 Response: 0
 Conc: N.D.

Instrument :
 ECD_D
 ClientSampleId :



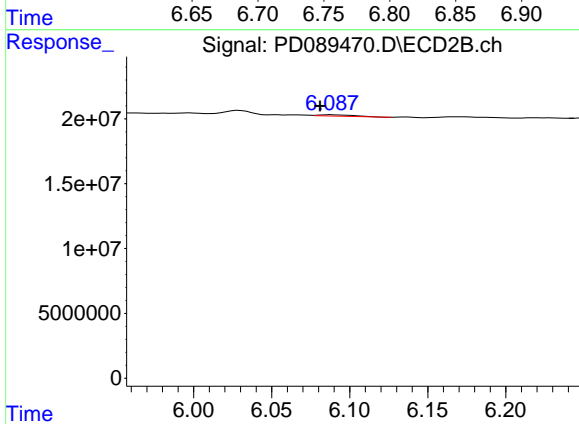
#14 Endrin

R.T.: 5.793 min
 Delta R.T.: 0.004 min
 Response: 100107099
 Conc: 4.61 ng/ml



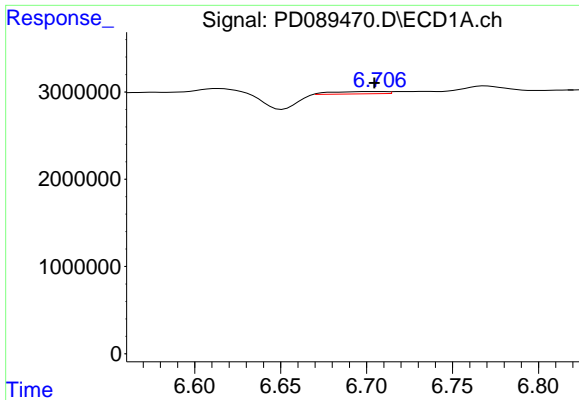
#15 Endosulfan II

R.T.: 6.769 min
 Delta R.T.: -0.017 min
 Response: 1291877
 Conc: 0.32 ng/ml



#15 Endosulfan II

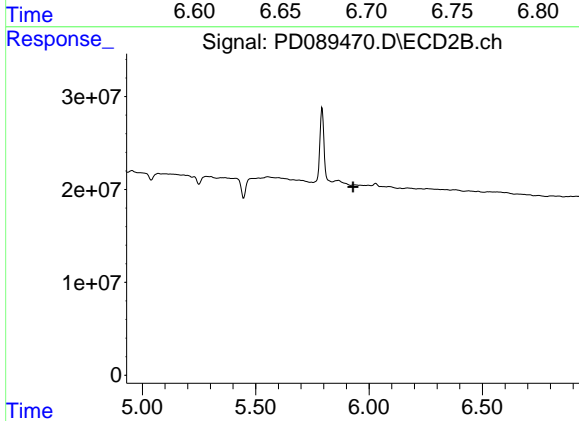
R.T.: 6.088 min
 Delta R.T.: 0.007 min
 Response: 1648994
 Conc: 0.08 ng/ml



#16 4,4'-DDD

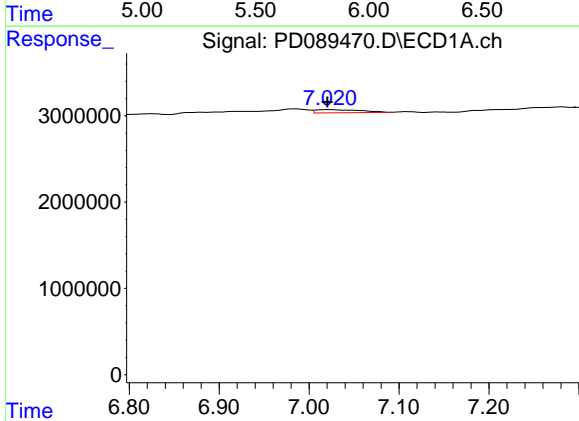
R.T.: 6.705 min
 Delta R.T.: 0.000 min
 Response: 578022
 Conc: 0.17 ng/ml

Instrument :
 ECD_D
 ClientSampleId :



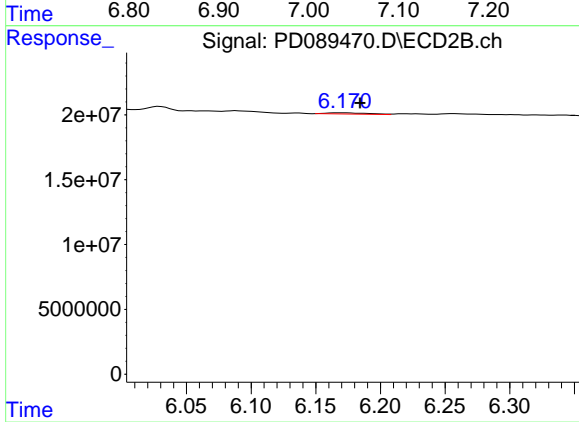
#16 4,4'-DDD

R.T.: 5.934 min
 Delta R.T.: 0.004 min
 Response: -1447296
 Conc: N.D.



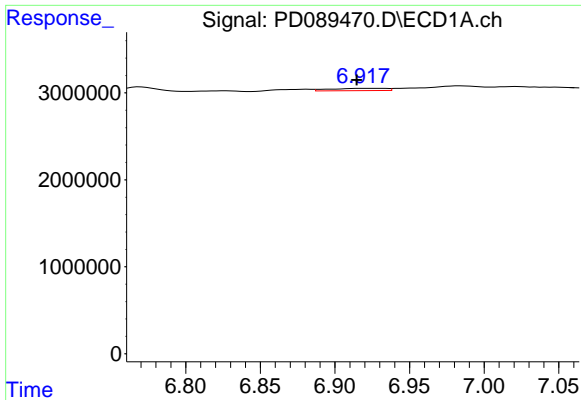
#17 4,4'-DDT

R.T.: 7.021 min
 Delta R.T.: 0.000 min
 Response: 1233673
 Conc: 0.33 ng/ml



#17 4,4'-DDT

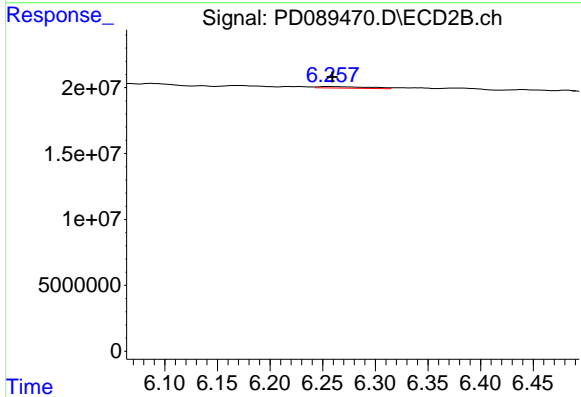
R.T.: 6.170 min
 Delta R.T.: -0.014 min
 Response: 2102036
 Conc: 0.10 ng/ml



#18 Endrin aldehyde

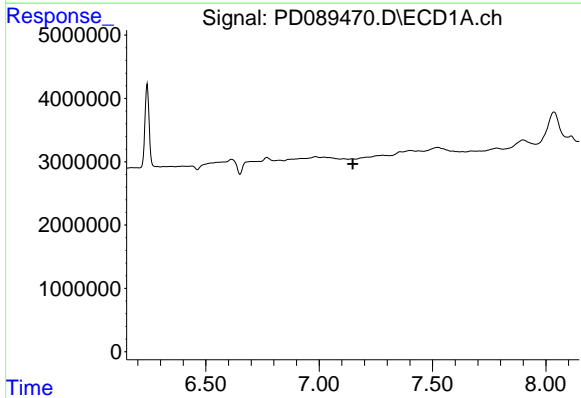
R.T.: 6.920 min
 Delta R.T.: 0.005 min
 Response: 693409
 Conc: 0.23 ng/ml

Instrument :
 ECD_D
 ClientSampleId :



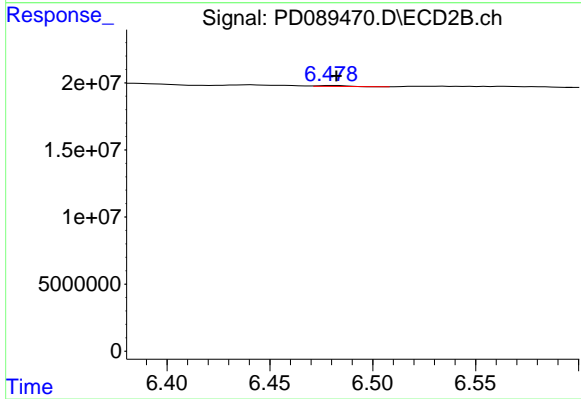
#18 Endrin aldehyde

R.T.: 6.256 min
 Delta R.T.: -0.003 min
 Response: 3961182
 Conc: 0.26 ng/ml



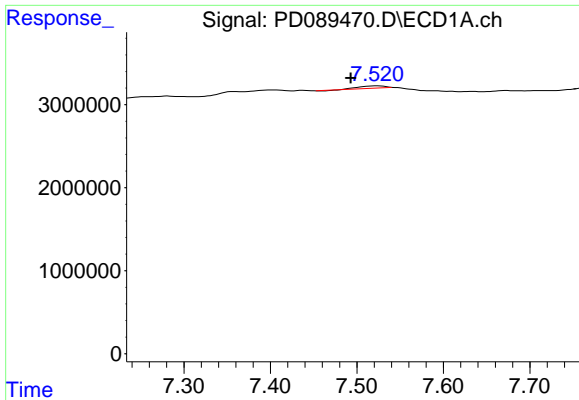
#19 Endosulfan Sulfate

R.T.: 0.000 min
 Exp R.T. : 7.148 min
 Response: 0
 Conc: N.D.



#19 Endosulfan Sulfate

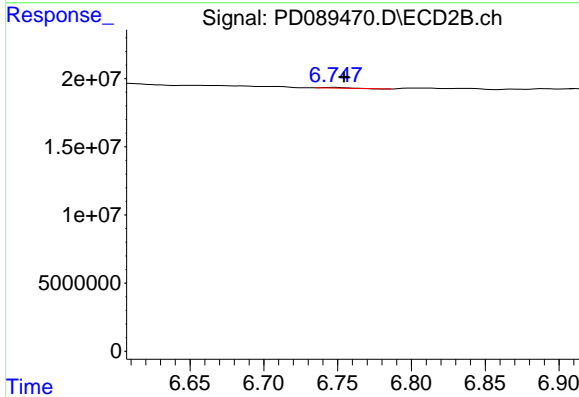
R.T.: 6.481 min
 Delta R.T.: -0.001 min
 Response: 662300
 Conc: 0.03 ng/ml



#20 Methoxychlor

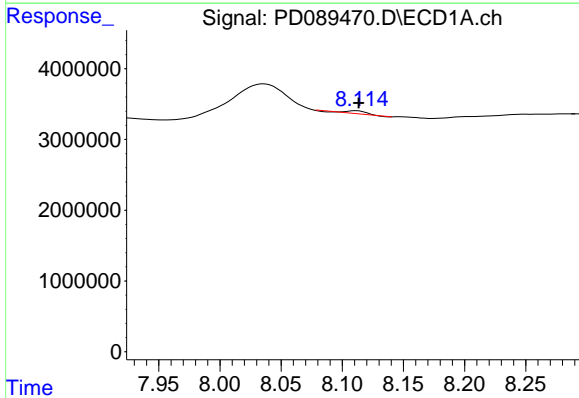
R.T.: 7.523 min
 Delta R.T.: 0.030 min
 Response: 619450
 Conc: 0.31 ng/ml

Instrument :
 ECD_D
 ClientSampleId :



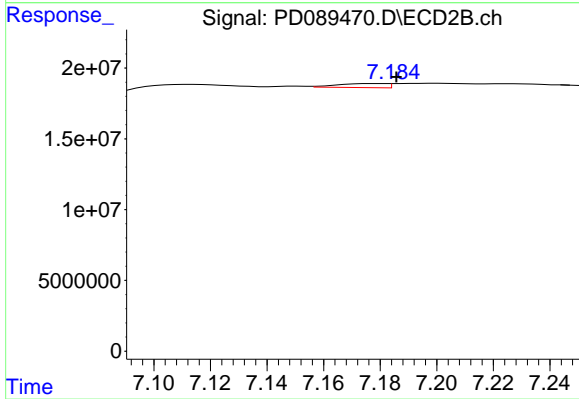
#20 Methoxychlor

R.T.: 6.747 min
 Delta R.T.: -0.007 min
 Response: 602374
 Conc: 0.06 ng/ml



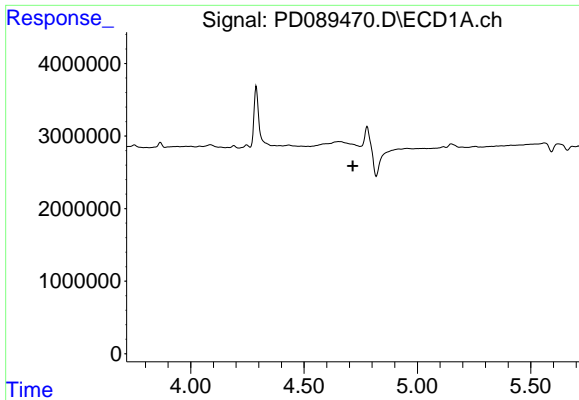
#22 Mirex

R.T.: 8.112 min
 Delta R.T.: -0.002 min
 Response: 521575
 Conc: 0.17 ng/ml



#22 Mirex

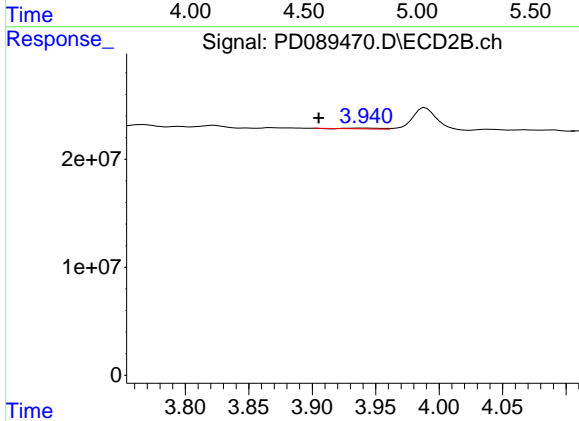
R.T.: 7.179 min
 Delta R.T.: -0.007 min
 Response: 3489311
 Conc: 0.21 ng/ml



#23 Chlordane-1

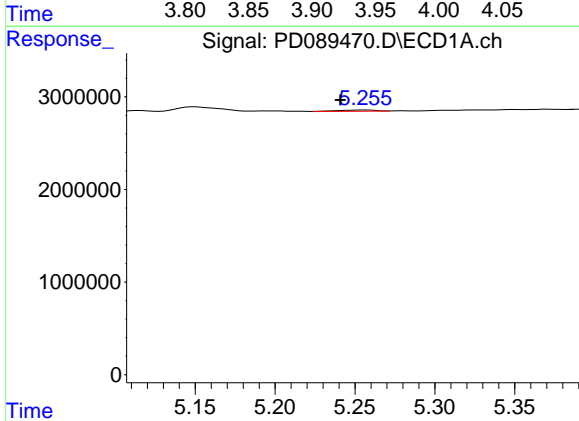
R.T.: 0.000 min
 Exp R.T.: 4.715 min
 Response: 0
 Conc: N.D.

Instrument :
 ECD_D
 ClientSampleId :



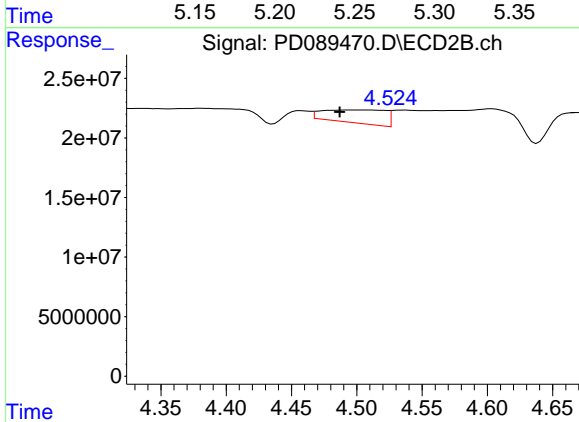
#23 Chlordane-1

R.T.: 3.941 min
 Delta R.T.: 0.036 min
 Response: 1460353
 Conc: 1.57 ng/ml



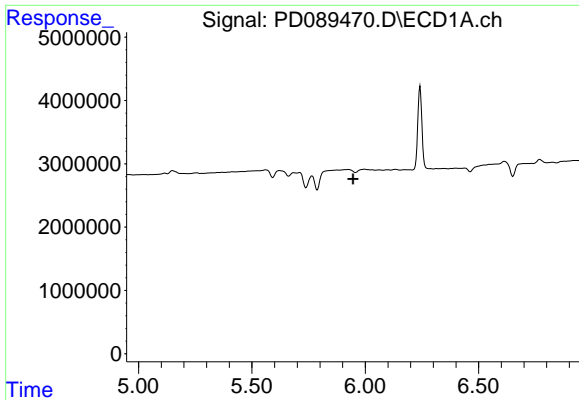
#24 Chlordane-2

R.T.: 5.257 min
 Delta R.T.: 0.016 min
 Response: 223224
 Conc: 1.02 ng/ml



#24 Chlordane-2

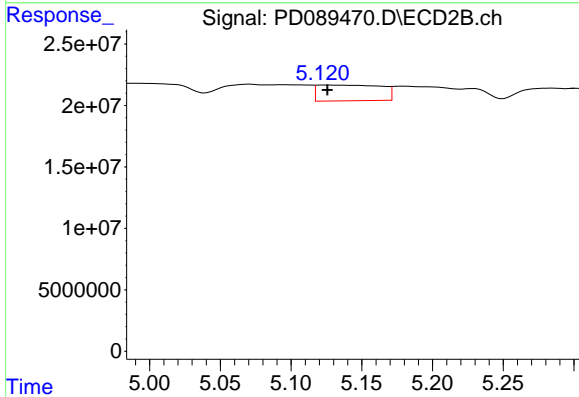
R.T.: 4.504 min
 Delta R.T.: 0.017 min
 Response: 36352263
 Conc: 38.20 ng/ml



#25 Chlordane-3

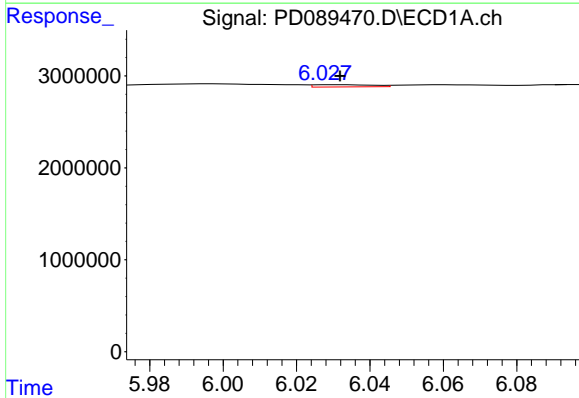
R.T.: 0.000 min
 Exp R.T.: 5.946 min
 Response: 0
 Conc: N.D.

Instrument :
 ECD_D
 ClientSampleId :



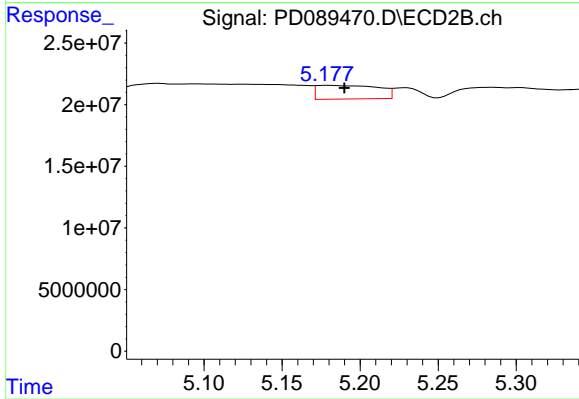
#25 Chlordane-3

R.T.: 5.123 min
 Delta R.T.: -0.003 min
 Response: 40129520
 Conc: 13.51 ng/ml



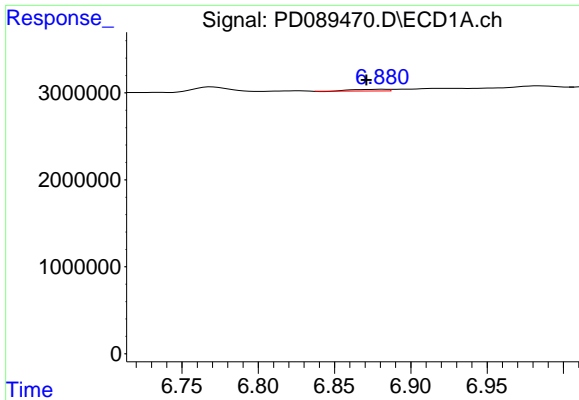
#26 Chlordane-4

R.T.: 6.030 min
 Delta R.T.: -0.002 min
 Response: 273699
 Conc: 0.26 ng/ml



#26 Chlordane-4

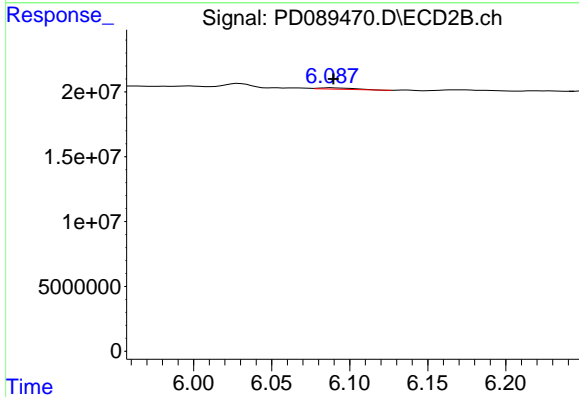
R.T.: 5.180 min
 Delta R.T.: -0.010 min
 Response: 30235343
 Conc: 12.06 ng/ml



#27 Chlordane-5

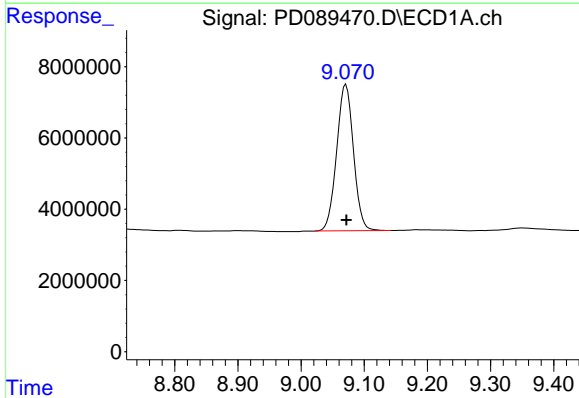
R.T.: 6.881 min
 Delta R.T.: 0.010 min
 Response: 298788
 Conc: 1.63 ng/ml

Instrument :
 ECD_D
 ClientSampleId :



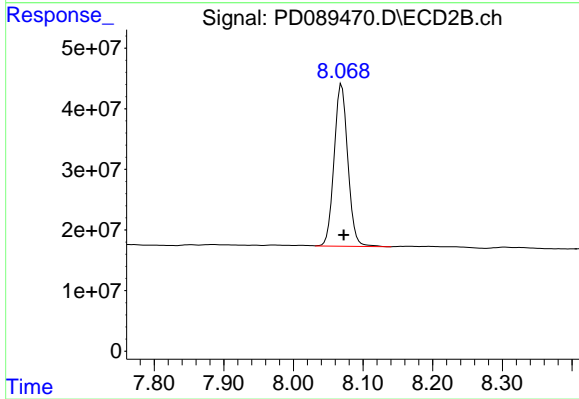
#27 Chlordane-5

R.T.: 6.088 min
 Delta R.T.: -0.001 min
 Response: 1648994
 Conc: 1.46 ng/ml



#28 Decachlorobiphenyl

R.T.: 9.071 min
 Delta R.T.: 0.000 min
 Response: 76083022
 Conc: 19.37 ng/ml



#28 Decachlorobiphenyl

R.T.: 8.069 min
 Delta R.T.: -0.003 min
 Response: 366731225
 Conc: 18.55 ng/ml