

Data Path : Z:\pestpcbsrv\HPCHEM1\ECD_D\Data\PD071125\
 Data File : PD089471.D
 Signal(s) : Signal #1: ECD1A.ch Signal #2: ECD2B.ch
 Acq On : 11 Jul 2025 17:07
 Operator : AR\AJ
 Sample : PSTDCCC050
 Misc :
 ALS Vial : 4 Sample Multiplier: 1

Instrument :
 ECD_D
 ClientSampleId :

Integration File signal 1: autoint1.e
 Integration File signal 2: autoint2.e
 Quant Time: Jul 11 22:55:59 2025
 Quant Method : Z:\pestpcbsrv\HPCHEM1\ECD_D\Method\PD061825.M
 Quant Title : GC Extractables
 QLast Update : Wed Jun 18 05:39:05 2025
 Response via : Initial Calibration
 Integrator: ChemStation

Volume Inj. : 1 µl
 Signal #1 Phase : ZB-MR2 Signal #2 Phase: ZB-MR2
 Signal #1 Info : 30M x 0.32mm x0.5 Signal #2 Info : 30M x 0.32mm x 0.25µm

| | Compound | RT#1 | RT#2 | Resp#1 | Resp#2 | ng/ml | ng/ml |
|-----------------------------|-----------------|--------|-------|----------|----------|----------|-----------|
| ----- | | | | | | | |
| System Monitoring Compounds | | | | | | | |
| 1) | SA Tetrachlo... | 3.550 | 2.881 | 148.9E6 | 951.9E6 | 52.172 | 56.151 |
| 28) | SA Decachlor... | 9.071 | 8.070 | 170.3E6 | 845.0E6 | 43.355 | 42.743 |
| Target Compounds | | | | | | | |
| 2) | A alpha-BHC | 3.999 | 3.393 | 304.7E6 | 1469.2E6 | 52.265 | 54.825 |
| 3) | MA gamma-BHC... | 4.329 | 3.729 | 286.9E6 | 1321.0E6 | 51.403 | 53.361 |
| 4) | MA Heptachlor | 4.928 | 4.082 | 268.3E6 | 1290.8E6 | 49.218 | 51.554 |
| 5) | MB Aldrin | 5.270 | 4.368 | 269.5E6 | 1308.7E6 | 50.730 | 54.040 |
| 6) | B beta-BHC | 4.515 | 4.025 | 109.2E6 | 567.2E6 | 49.456 | 52.782 |
| 7) | B delta-BHC | 4.763 | 4.261 | 274.4E6 | 1336.3E6 | 53.455 | 53.723 |
| 8) | B Heptachlo... | 5.690 | 4.871 | 231.0E6 | 1259.5E6 | 47.877 | 57.518 |
| 9) | A Endosulfan I | 6.073 | 5.246 | 218.6E6 | 1079.6E6 | 48.502 | 51.797 |
| 10) | B gamma-Chl... | 5.945 | 5.124 | 235.4E6 | 1293.4E6 | 49.154 | 54.066 |
| 11) | B alpha-Chl... | 6.025 | 5.189 | 234.0E6 | 1215.0E6 | 48.372 | 53.064 |
| 12) | B 4,4'-DDE | 6.195 | 5.374 | 207.2E6 | 1204.8E6 | 47.508 | 52.574 |
| 13) | MA Dieldrin | 6.346 | 5.512 | 231.2E6 | 1192.0E6 | 48.188 | 51.360 |
| 14) | MA Endrin | 6.573 | 5.788 | 187.9E6 | 1140.4E6 | 45.556 | 52.517 |
| 15) | B Endosulfa... | 6.785 | 6.079 | 192.9E6 | 1004.6E6 | 47.798 | 49.742 |
| 16) | A 4,4'-DDD | 6.704 | 5.928 | 168.1E6 | 978.8E6 | 48.989 | 51.169 |
| 17) | MA 4,4'-DDT | 7.020 | 6.182 | 154.8E6 | 895.8E6 | 40.877 | 44.175 |
| 18) | B Endrin al... | 6.914 | 6.257 | 132.3E6 | 705.5E6 | 43.177 | 46.076 |
| 19) | B Endosulfa... | 7.148 | 6.481 | 176.8E6 | 959.1E6 | 46.067 | 48.882 |
| 20) | A Methoxychlor | 7.492 | 6.752 | 74826961 | 447.9E6 | 37.032 | 41.597 |
| 21) | B Endrin ke... | 7.629 | 6.990 | 183.4E6 | 1006.1E6 | 45.031 | 46.576 |
| 22) | Mirex | 8.112 | 7.184 | 130.1E6 | 742.9E6 | 42.807 | 44.540 |
| 23) | Chlordane-1 | 0.000 | 3.905 | 0 | 951573 | N.D. | 1.021 # |
| 24) | Chlordane-2 | 5.270f | 4.506 | 269.5E6 | 63744682 | 1234.595 | 66.986 # |
| 25) | Chlordane-3 | 5.945 | 5.124 | 235.4E6 | 1293.4E6 | 272.880 | 435.461 # |
| 26) | Chlordane-4 | 6.025 | 5.189 | 234.0E6 | 1215.0E6 | 222.753 | 484.696 # |
| 27) | Chlordane-5 | 6.867 | 6.079 | -447 | 1004.6E6 | N.D. | 887.742 |
| ----- | | | | | | | |

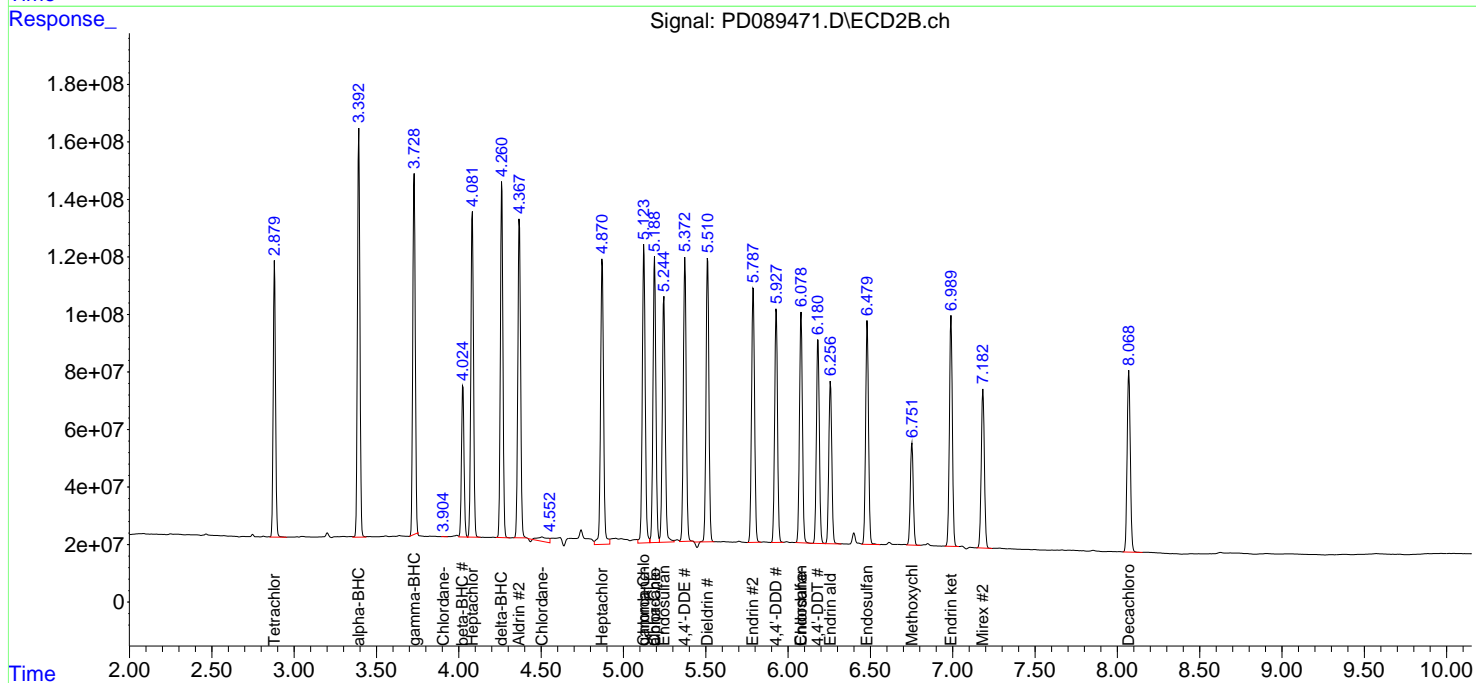
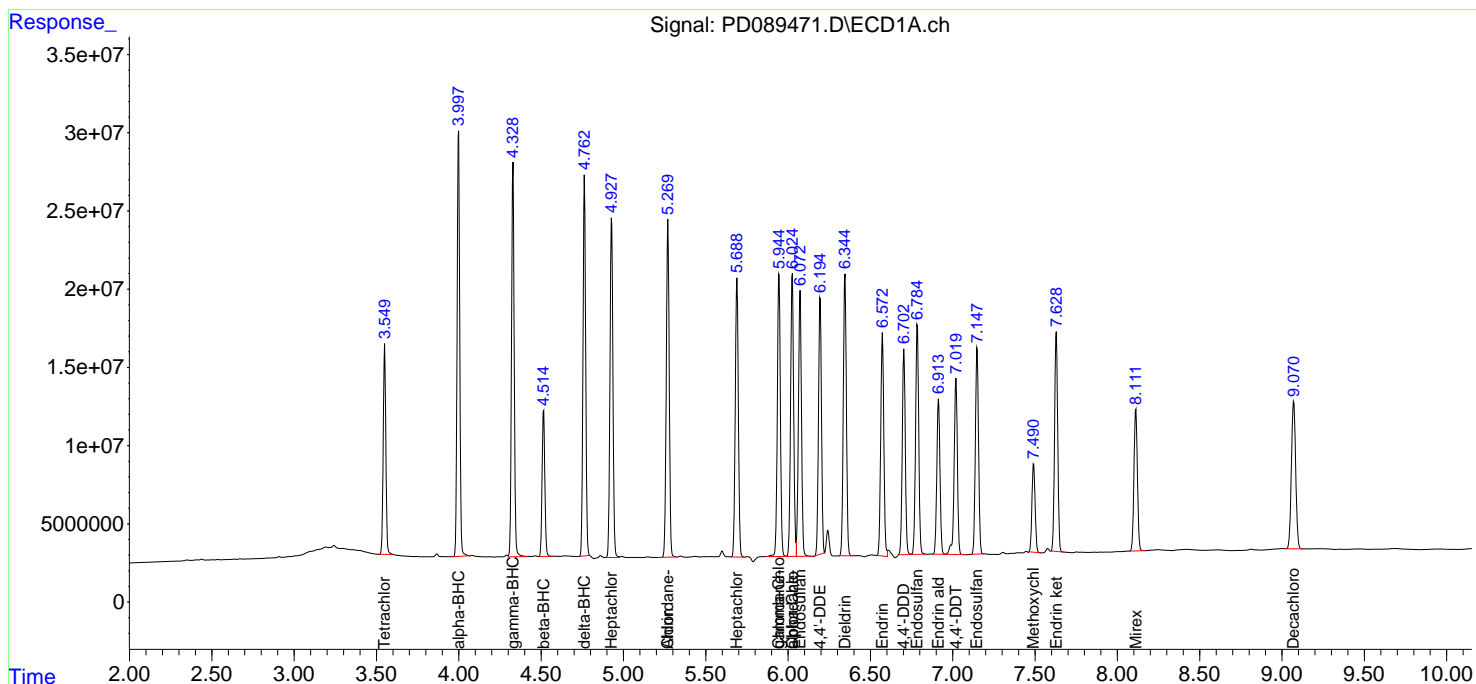
(f)=RT Delta > 1/2 Window (#)=Amounts differ by > 25% (m)=manual int.

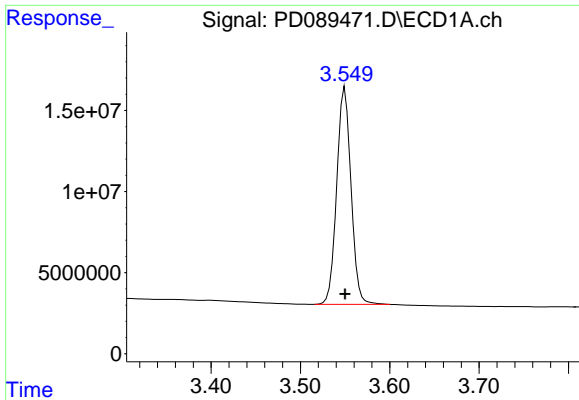
Data Path : Z:\pestpcbsrv\HPCHEM1\ECD_D\Data\PD071125\
 Data File : PD089471.D
 Signal(s) : Signal #1: ECD1A.ch Signal #2: ECD2B.ch
 Acq On : 11 Jul 2025 17:07
 Operator : AR\AJ
 Sample : PSTDCCC050
 Misc :
 ALS Vial : 4 Sample Multiplier: 1

Instrument :
 ECD_D
 ClientSampleId :

Integration File signal 1: autoint1.e
 Integration File signal 2: autoint2.e
 Quant Time: Jul 11 22:55:59 2025
 Quant Method : Z:\pestpcbsrv\HPCHEM1\ECD_D\Method\PD061825.M
 Quant Title : GC Extractables
 QLast Update : Wed Jun 18 05:39:05 2025
 Response via : Initial Calibration
 Integrator: ChemStation

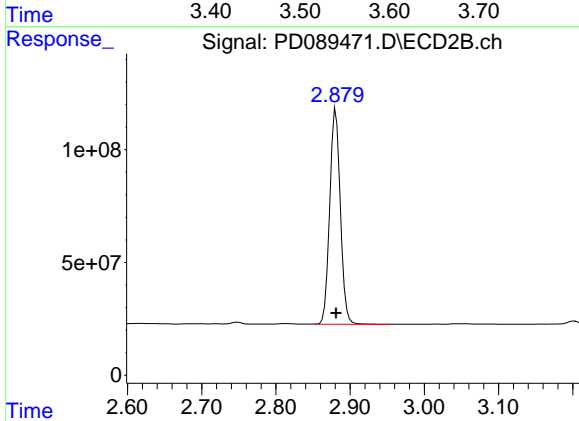
Volume Inj. : 1 µl
 Signal #1 Phase : ZB-MR1 Signal #2 Phase: ZB-MR2
 Signal #1 Info : 30M x 0.32mm x0.5 Signal #2 Info : 30M x 0.32mm x 0.25µm



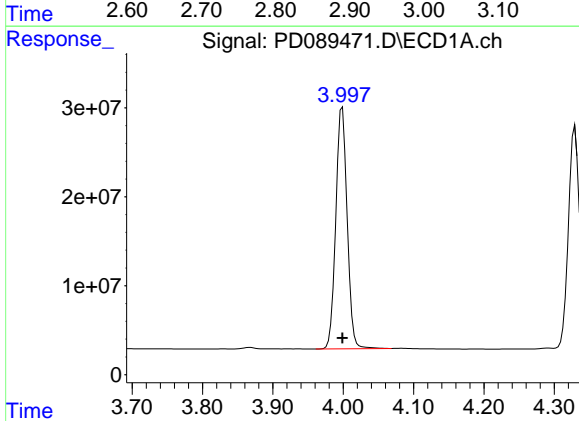


#1 Tetrachloro-m-xylene
 R.T.: 3.550 min
 Delta R.T.: 0.000 min
 Response: 148852190
 Conc: 52.17 ng/ml

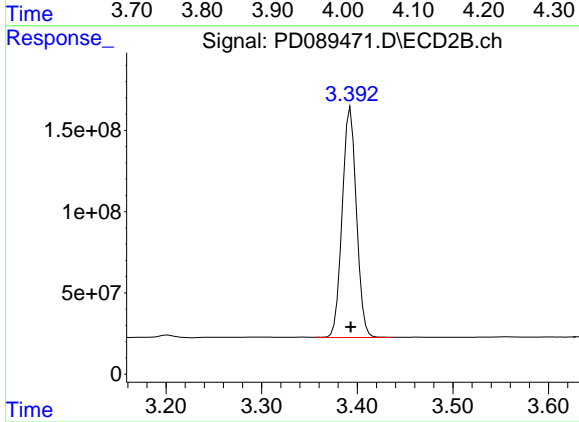
Instrument :
 ECD_D
 ClientSampleId :



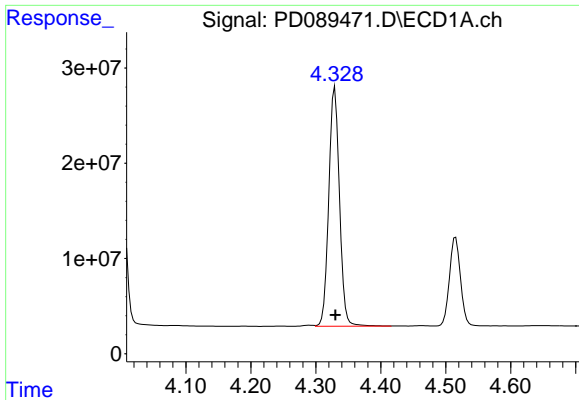
#1 Tetrachloro-m-xylene
 R.T.: 2.881 min
 Delta R.T.: 0.000 min
 Response: 951937081
 Conc: 56.15 ng/ml



#2 alpha-BHC
 R.T.: 3.999 min
 Delta R.T.: 0.000 min
 Response: 304657104
 Conc: 52.27 ng/ml



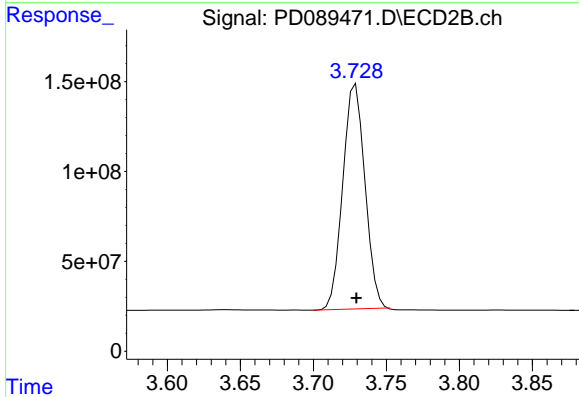
#2 alpha-BHC
 R.T.: 3.393 min
 Delta R.T.: 0.000 min
 Response: 1469160833
 Conc: 54.83 ng/ml



#3 gamma-BHC (Lindane)

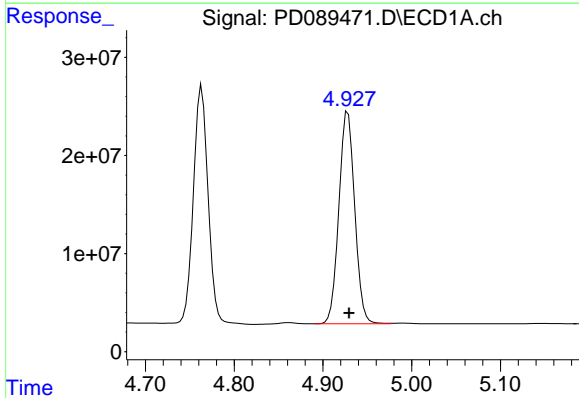
R.T.: 4.329 min
 Delta R.T.: 0.000 min
 Response: 286915597
 Conc: 51.40 ng/ml

Instrument :
 ECD_D
 ClientSampleId :



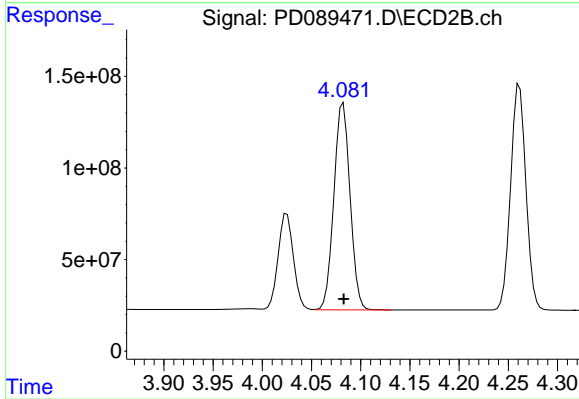
#3 gamma-BHC (Lindane)

R.T.: 3.729 min
 Delta R.T.: 0.000 min
 Response: 1321043398
 Conc: 53.36 ng/ml



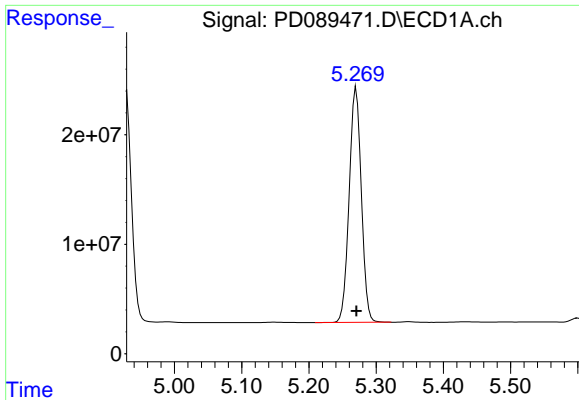
#4 Heptachlor

R.T.: 4.928 min
 Delta R.T.: -0.001 min
 Response: 268336395
 Conc: 49.22 ng/ml



#4 Heptachlor

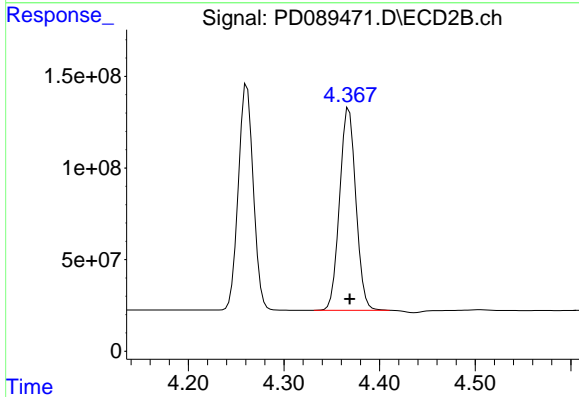
R.T.: 4.082 min
 Delta R.T.: 0.000 min
 Response: 1290819966
 Conc: 51.55 ng/ml



#5 Aldrin

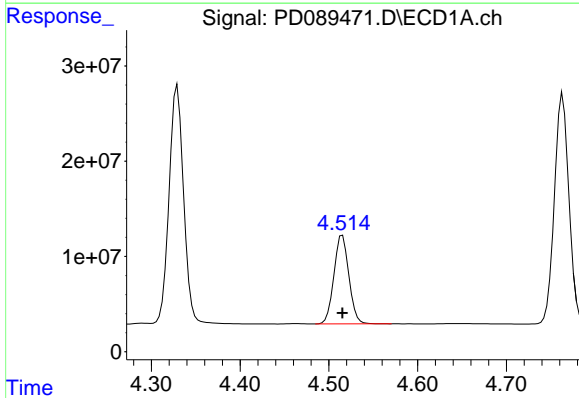
R.T.: 5.270 min
 Delta R.T.: 0.000 min
 Response: 269529019
 Conc: 50.73 ng/ml

Instrument :
 ECD_D
 ClientSampleId :



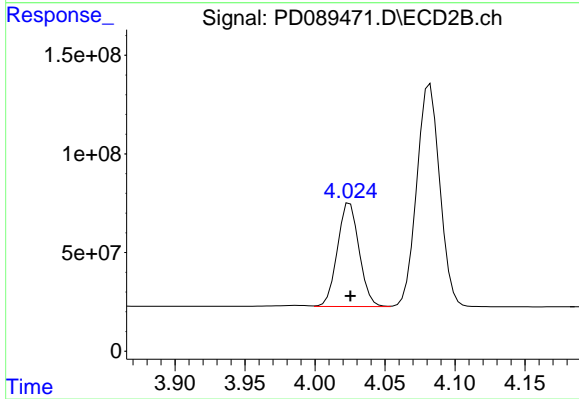
#5 Aldrin

R.T.: 4.368 min
 Delta R.T.: 0.000 min
 Response: 1308699297
 Conc: 54.04 ng/ml



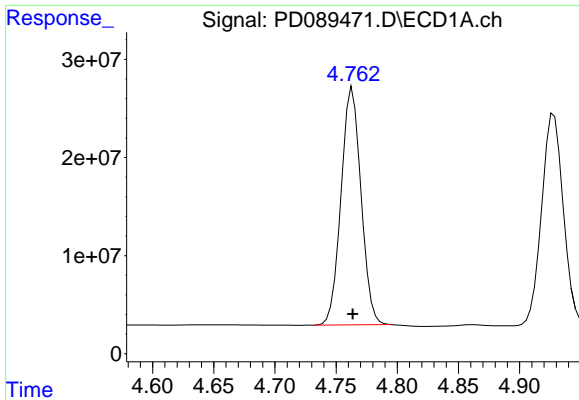
#6 beta-BHC

R.T.: 4.515 min
 Delta R.T.: 0.000 min
 Response: 109156266
 Conc: 49.46 ng/ml



#6 beta-BHC

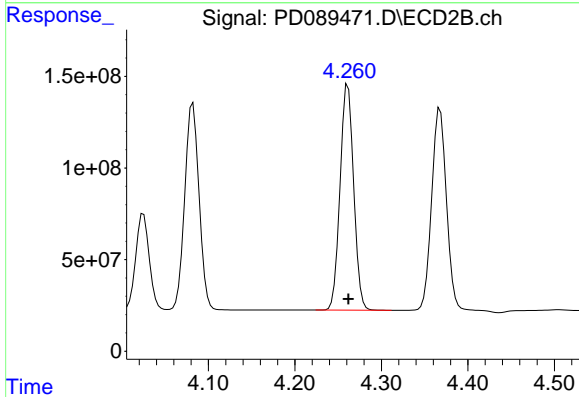
R.T.: 4.025 min
 Delta R.T.: 0.000 min
 Response: 567211162
 Conc: 52.78 ng/ml



#7 delta-BHC

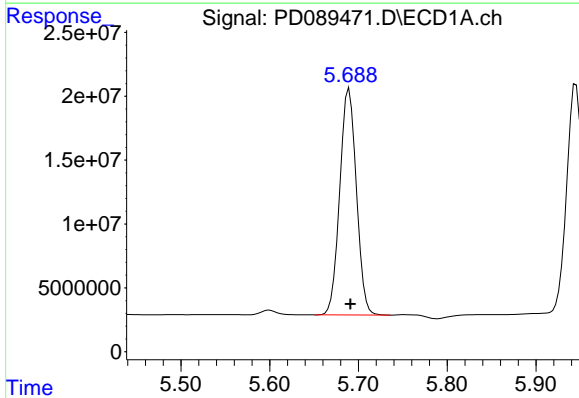
R.T.: 4.763 min
 Delta R.T.: 0.000 min
 Response: 274380115
 Conc: 53.46 ng/ml

Instrument :
 ECD_D
 ClientSampleId :



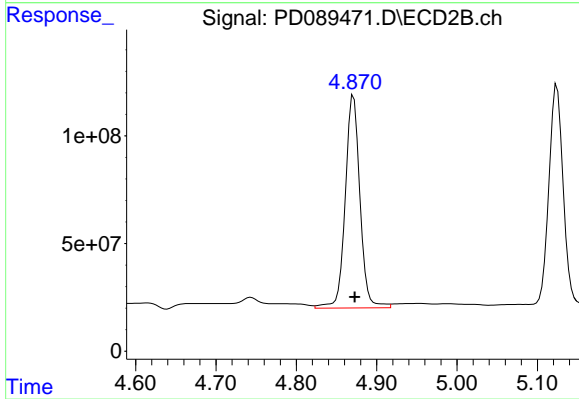
#7 delta-BHC

R.T.: 4.261 min
 Delta R.T.: 0.000 min
 Response: 1336285178
 Conc: 53.72 ng/ml



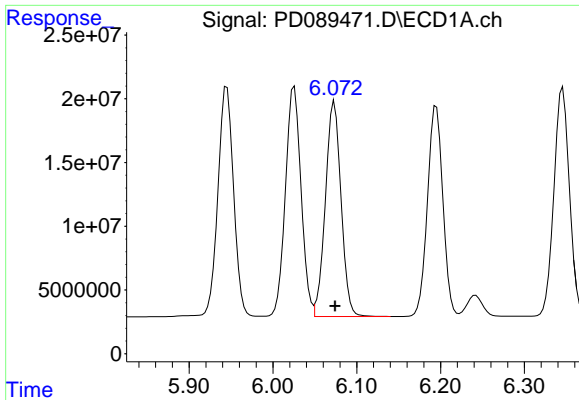
#8 Heptachlor epoxide

R.T.: 5.690 min
 Delta R.T.: -0.001 min
 Response: 230957728
 Conc: 47.88 ng/ml



#8 Heptachlor epoxide

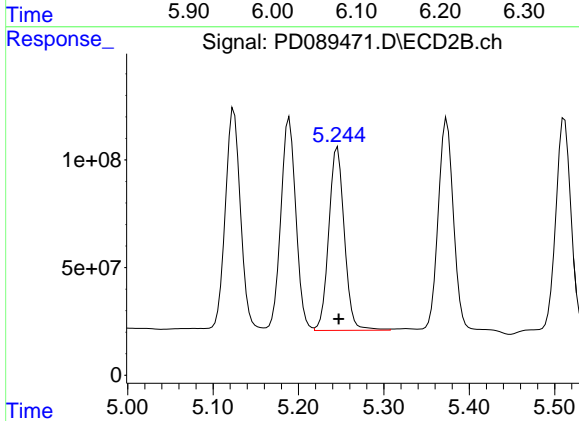
R.T.: 4.871 min
 Delta R.T.: -0.001 min
 Response: 1259529163
 Conc: 57.52 ng/ml



#9 Endosulfan I

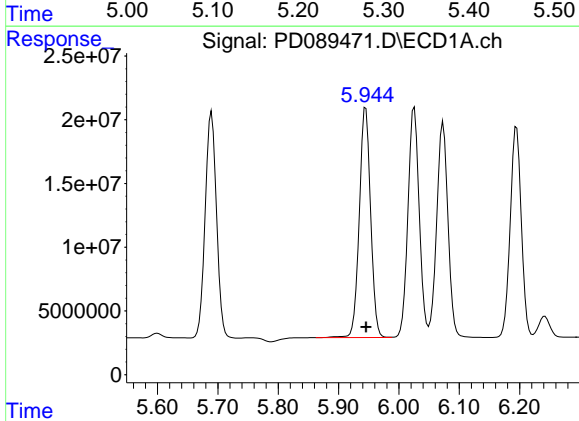
R.T.: 6.073 min
 Delta R.T.: 0.000 min
 Response: 218619395
 Conc: 48.50 ng/ml

Instrument :
 ECD_D
 ClientSampleId :



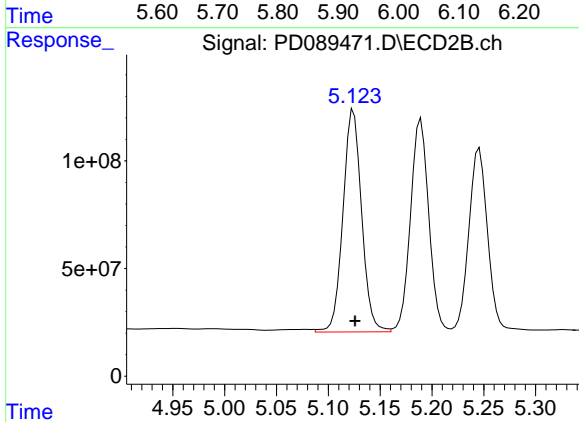
#9 Endosulfan I

R.T.: 5.246 min
 Delta R.T.: -0.001 min
 Response: 1079567490
 Conc: 51.80 ng/ml



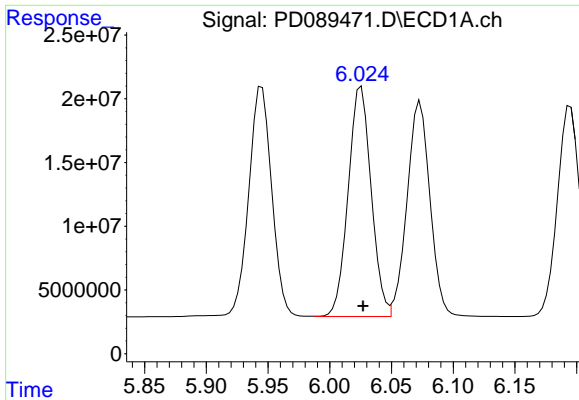
#10 gamma-Chlordane

R.T.: 5.945 min
 Delta R.T.: 0.000 min
 Response: 235354509
 Conc: 49.15 ng/ml



#10 gamma-Chlordane

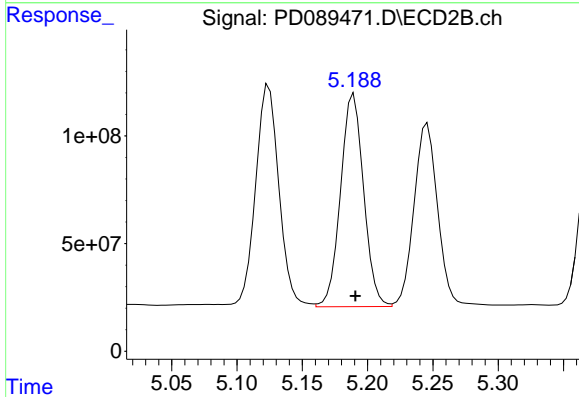
R.T.: 5.124 min
 Delta R.T.: -0.001 min
 Response: 1293404625
 Conc: 54.07 ng/ml



#11 alpha-Chlordane

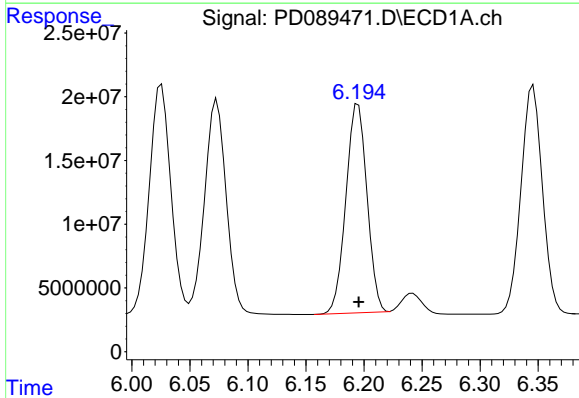
R.T.: 6.025 min
 Delta R.T.: -0.001 min
 Response: 234048047
 Conc: 48.37 ng/ml

Instrument :
 ECD_D
 ClientSampleId :



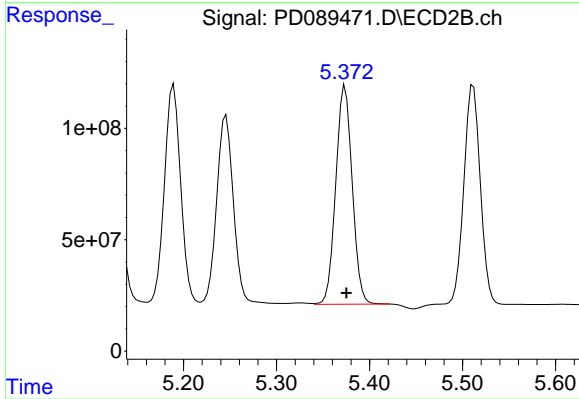
#11 alpha-Chlordane

R.T.: 5.189 min
 Delta R.T.: -0.001 min
 Response: 1214998020
 Conc: 53.06 ng/ml



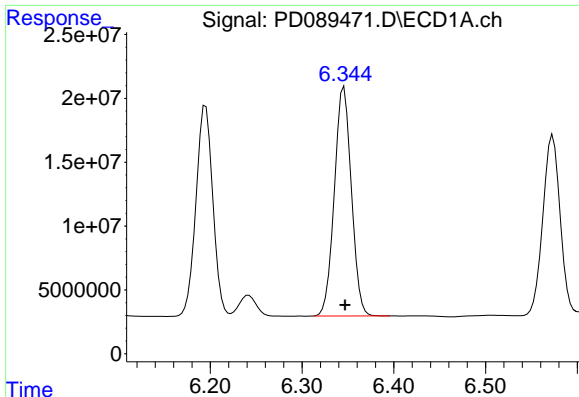
#12 4,4'-DDE

R.T.: 6.195 min
 Delta R.T.: 0.000 min
 Response: 207184802
 Conc: 47.51 ng/ml



#12 4,4'-DDE

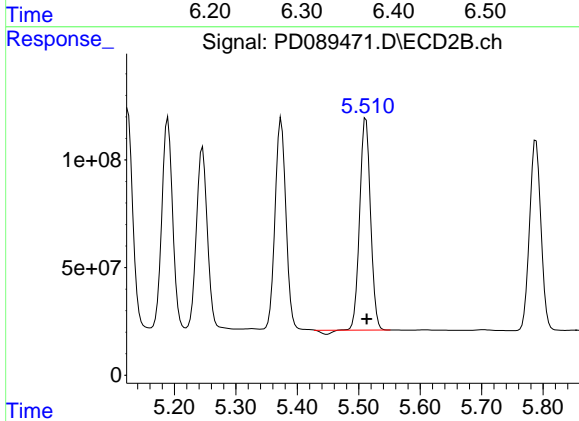
R.T.: 5.374 min
 Delta R.T.: -0.001 min
 Response: 1204780846
 Conc: 52.57 ng/ml



#13 Dieldrin

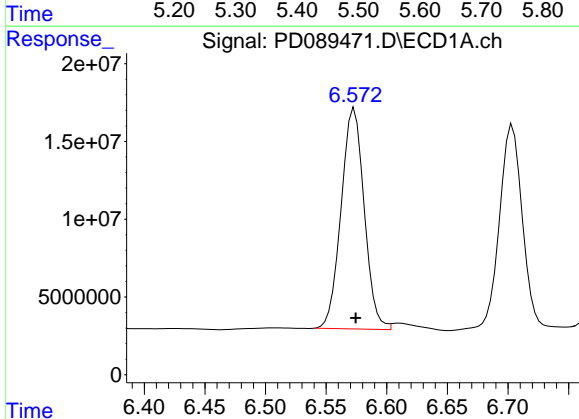
R.T.: 6.346 min
 Delta R.T.: -0.001 min
 Response: 231181050
 Conc: 48.19 ng/ml

Instrument :
 ECD_D
 ClientSampleId :



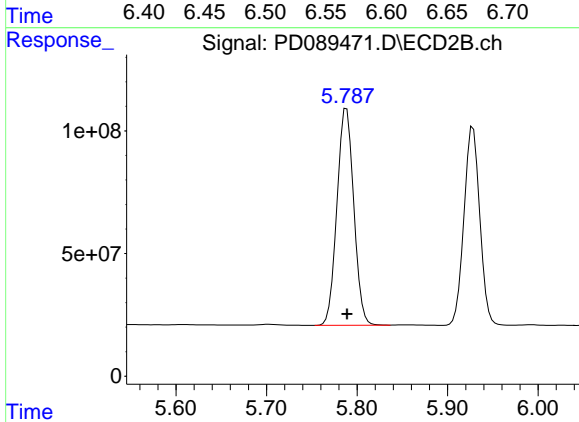
#13 Dieldrin

R.T.: 5.512 min
 Delta R.T.: -0.002 min
 Response: 1191991645
 Conc: 51.36 ng/ml



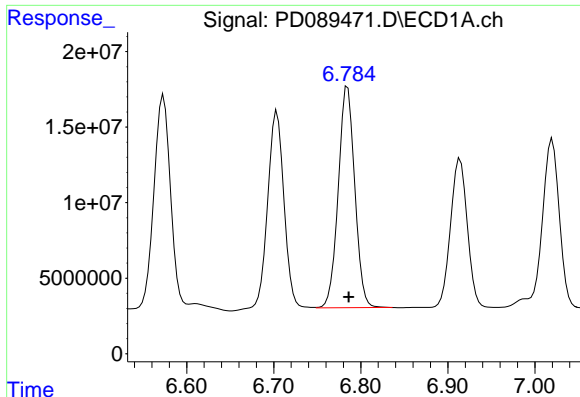
#14 Endrin

R.T.: 6.573 min
 Delta R.T.: 0.000 min
 Response: 187944644
 Conc: 45.56 ng/ml



#14 Endrin

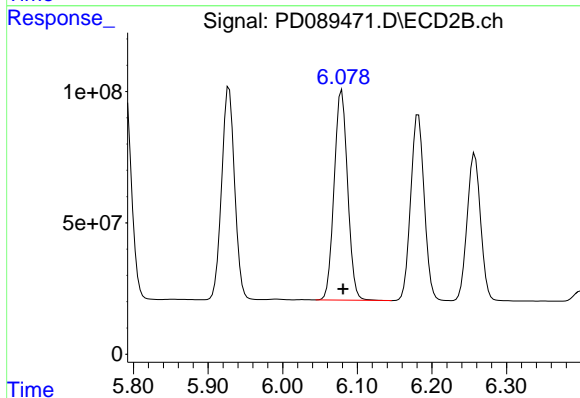
R.T.: 5.788 min
 Delta R.T.: 0.000 min
 Response: 1140360543
 Conc: 52.52 ng/ml



#15 Endosulfan II

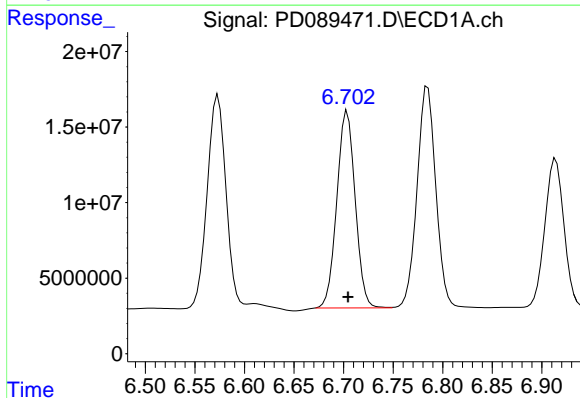
R.T.: 6.785 min
Delta R.T.: -0.001 min
Response: 192942573
Conc: 47.80 ng/ml

Instrument :
ECD_D
ClientSampleId :



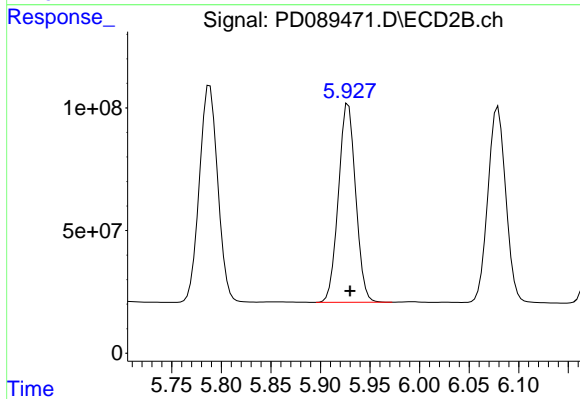
#15 Endosulfan II

R.T.: 6.079 min
Delta R.T.: -0.002 min
Response: 1004622488
Conc: 49.74 ng/ml



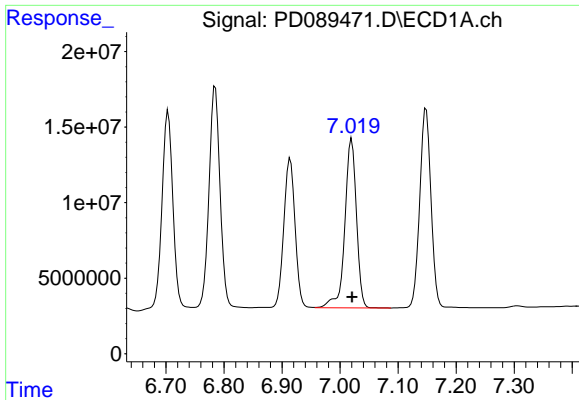
#16 4,4'-DDD

R.T.: 6.704 min
Delta R.T.: 0.000 min
Response: 168133982
Conc: 48.99 ng/ml



#16 4,4'-DDD

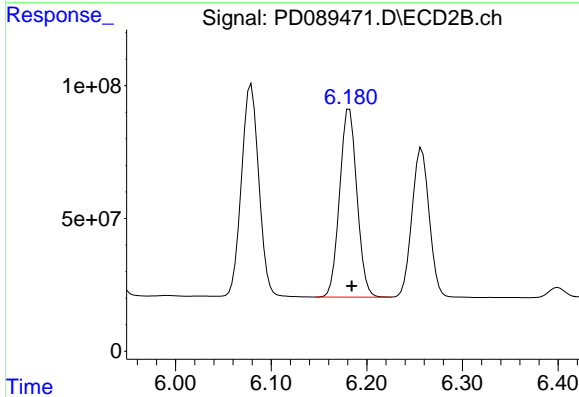
R.T.: 5.928 min
Delta R.T.: -0.002 min
Response: 978828836
Conc: 51.17 ng/ml



#17 4,4'-DDT

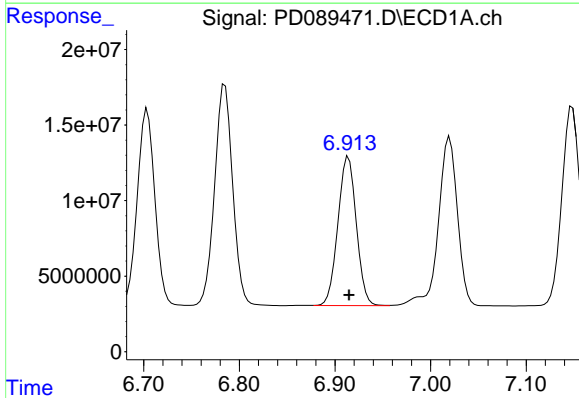
R.T.: 7.020 min
 Delta R.T.: 0.000 min
 Response: 154849991
 Conc: 40.88 ng/ml

Instrument :
 ECD_D
 ClientSampleId :



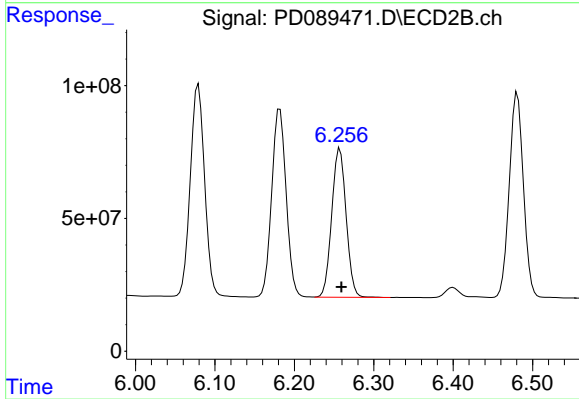
#17 4,4'-DDT

R.T.: 6.182 min
 Delta R.T.: -0.002 min
 Response: 895844585
 Conc: 44.18 ng/ml



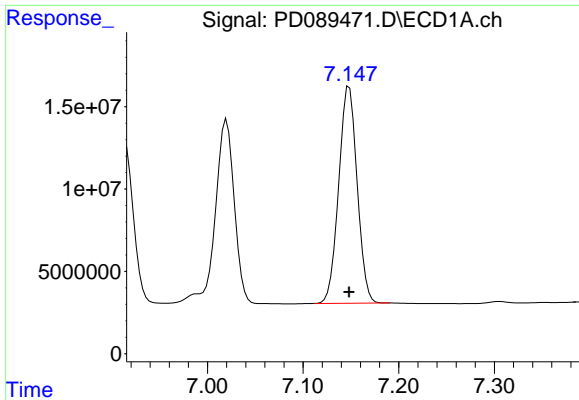
#18 Endrin aldehyde

R.T.: 6.914 min
 Delta R.T.: 0.000 min
 Response: 132291676
 Conc: 43.18 ng/ml



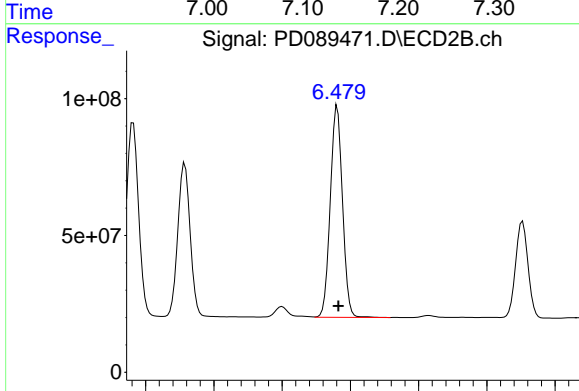
#18 Endrin aldehyde

R.T.: 6.257 min
 Delta R.T.: -0.002 min
 Response: 705479064
 Conc: 46.08 ng/ml

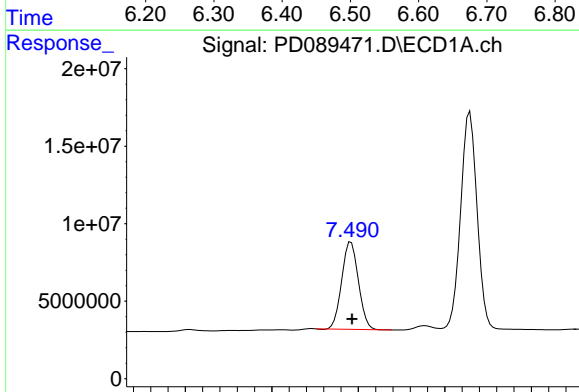


#19 Endosulfan Sulfate
 R.T.: 7.148 min
 Delta R.T.: 0.000 min
 Response: 176767821
 Conc: 46.07 ng/ml

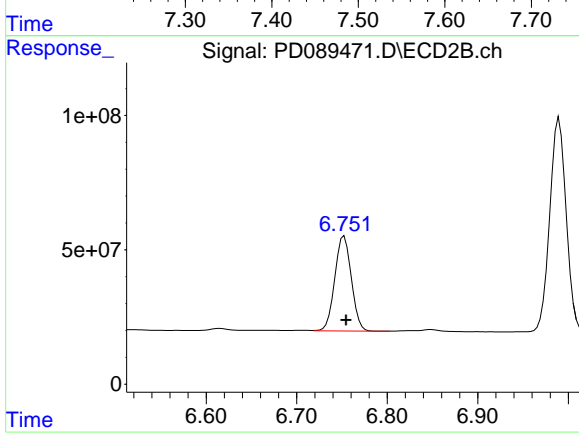
Instrument :
 ECD_D
 ClientSampleId :



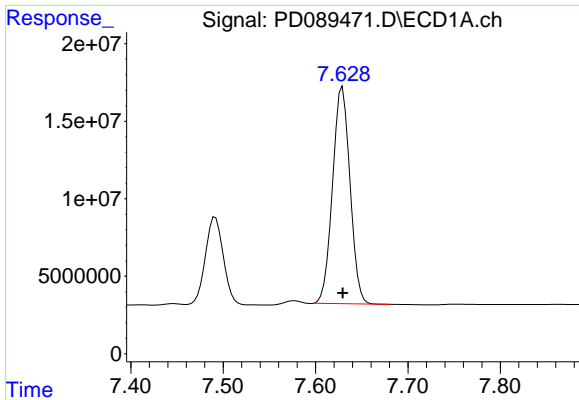
#19 Endosulfan Sulfate
 R.T.: 6.481 min
 Delta R.T.: -0.002 min
 Response: 959126329
 Conc: 48.88 ng/ml



#20 Methoxychlor
 R.T.: 7.492 min
 Delta R.T.: -0.001 min
 Response: 74826961
 Conc: 37.03 ng/ml



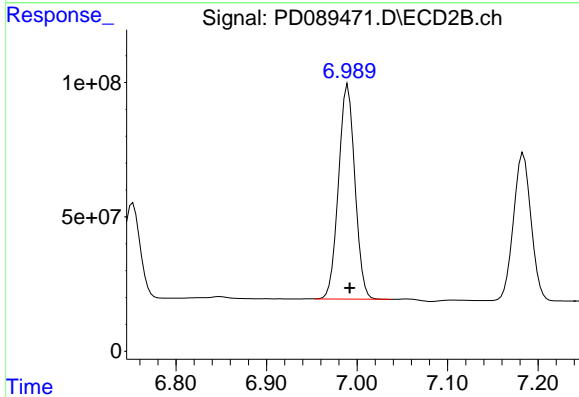
#20 Methoxychlor
 R.T.: 6.752 min
 Delta R.T.: -0.002 min
 Response: 447918771
 Conc: 41.60 ng/ml



#21 Endrin ketone

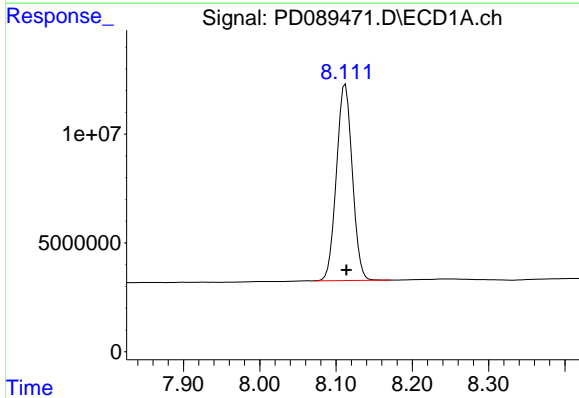
R.T.: 7.629 min
 Delta R.T.: 0.000 min
 Response: 183414868
 Conc: 45.03 ng/ml

Instrument :
 ECD_D
 ClientSampleId :



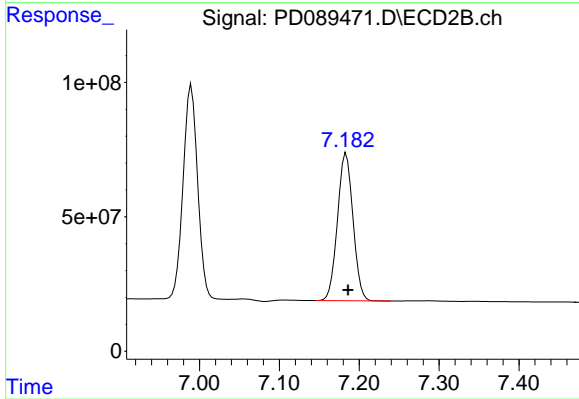
#21 Endrin ketone

R.T.: 6.990 min
 Delta R.T.: -0.002 min
 Response: 1006127667
 Conc: 46.58 ng/ml



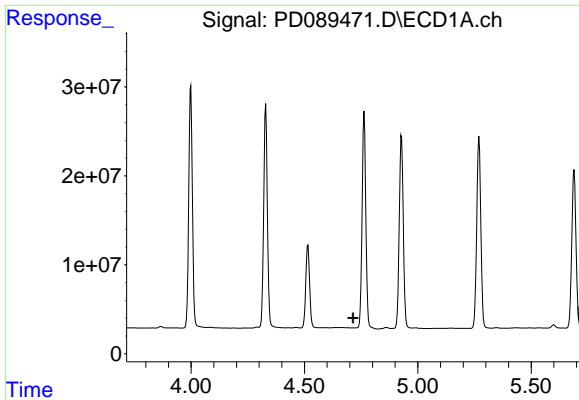
#22 Mirex

R.T.: 8.112 min
 Delta R.T.: -0.001 min
 Response: 130138920
 Conc: 42.81 ng/ml



#22 Mirex

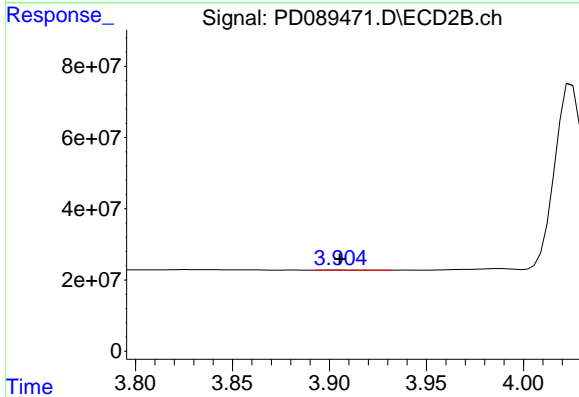
R.T.: 7.184 min
 Delta R.T.: -0.002 min
 Response: 742851132
 Conc: 44.54 ng/ml



#23 Chlordane-1

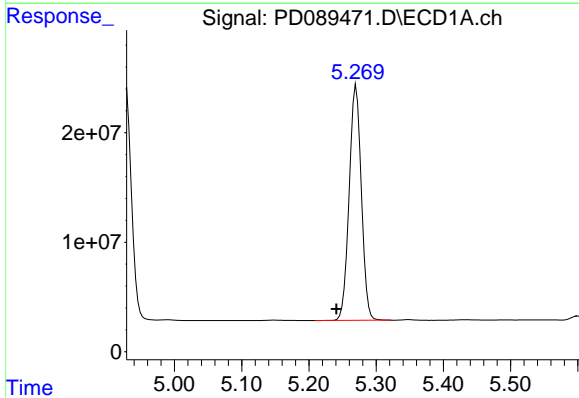
R.T.: 0.000 min
 Exp R.T.: 4.715 min
 Response: 0
 Conc: N.D.

Instrument :
 ECD_D
 ClientSampleId :



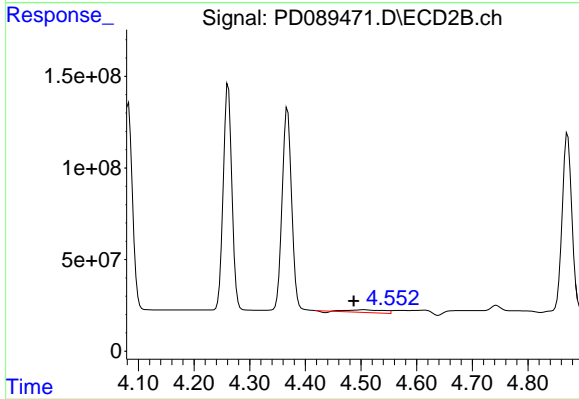
#23 Chlordane-1

R.T.: 3.905 min
 Delta R.T.: 0.000 min
 Response: 951573
 Conc: 1.02 ng/ml



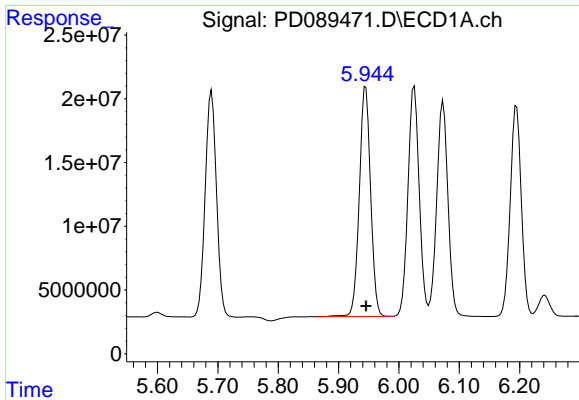
#24 Chlordane-2

R.T.: 5.270 min
 Delta R.T.: 0.029 min
 Response: 269529019
 Conc: 1234.59 ng/ml



#24 Chlordane-2

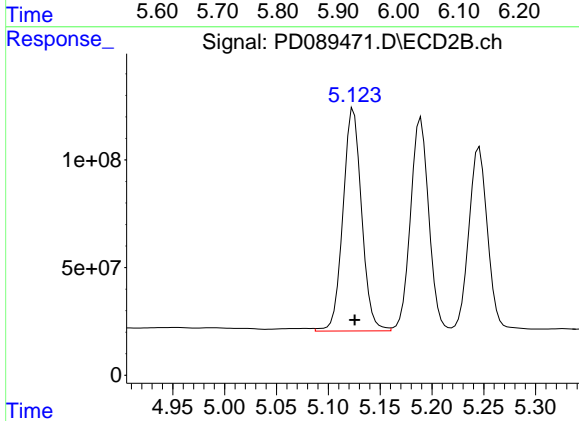
R.T.: 4.506 min
 Delta R.T.: 0.019 min
 Response: 63744682
 Conc: 66.99 ng/ml



#25 Chlordane-3

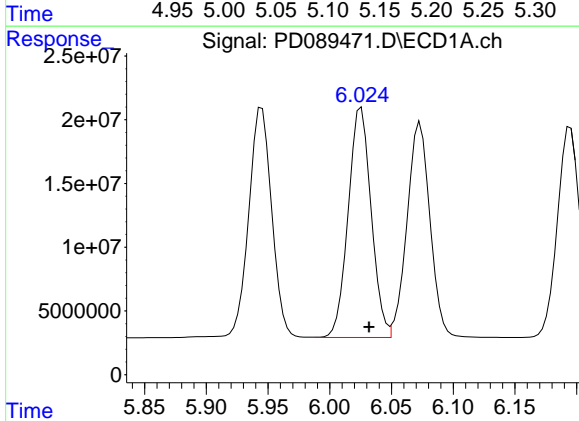
R.T.: 5.945 min
 Delta R.T.: 0.000 min
 Response: 235354509
 Conc: 272.88 ng/ml

Instrument :
 ECD_D
 ClientSampleId :



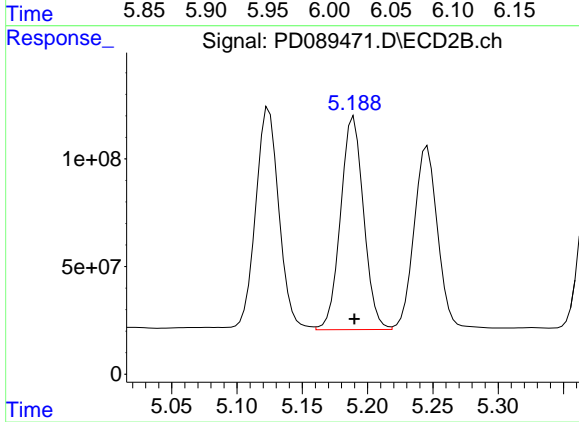
#25 Chlordane-3

R.T.: 5.124 min
 Delta R.T.: -0.001 min
 Response: 1293404625
 Conc: 435.46 ng/ml



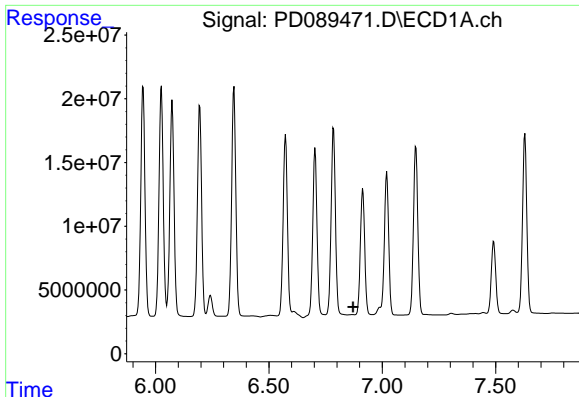
#26 Chlordane-4

R.T.: 6.025 min
 Delta R.T.: -0.006 min
 Response: 234048047
 Conc: 222.75 ng/ml



#26 Chlordane-4

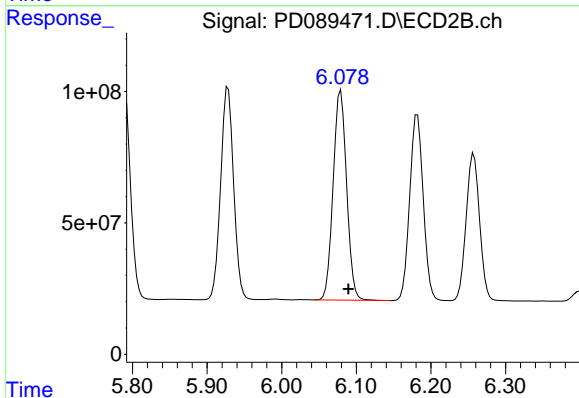
R.T.: 5.189 min
 Delta R.T.: 0.000 min
 Response: 1214998020
 Conc: 484.70 ng/ml



#27 Chlordane-5

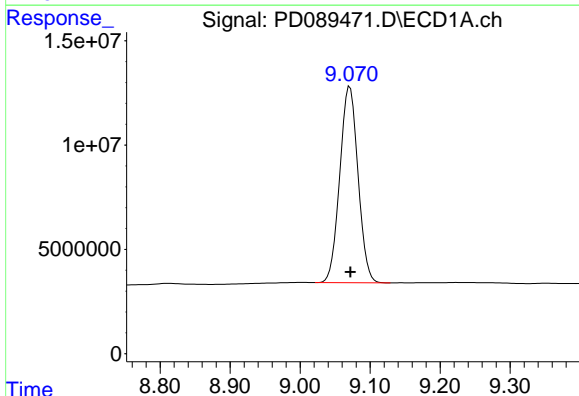
R.T.: 6.867 min
 Delta R.T.: -0.004 min
 Response: -447
 Conc: N.D.

Instrument :
 ECD_D
 ClientSampleId :



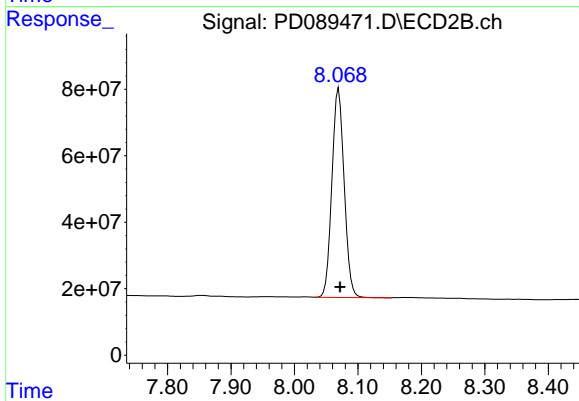
#27 Chlordane-5

R.T.: 6.079 min
 Delta R.T.: -0.010 min
 Response: 1004622488
 Conc: 887.74 ng/ml



#28 Decachlorobiphenyl

R.T.: 9.071 min
 Delta R.T.: 0.000 min
 Response: 170280476
 Conc: 43.35 ng/ml



#28 Decachlorobiphenyl

R.T.: 8.070 min
 Delta R.T.: -0.003 min
 Response: 845033307
 Conc: 42.74 ng/ml