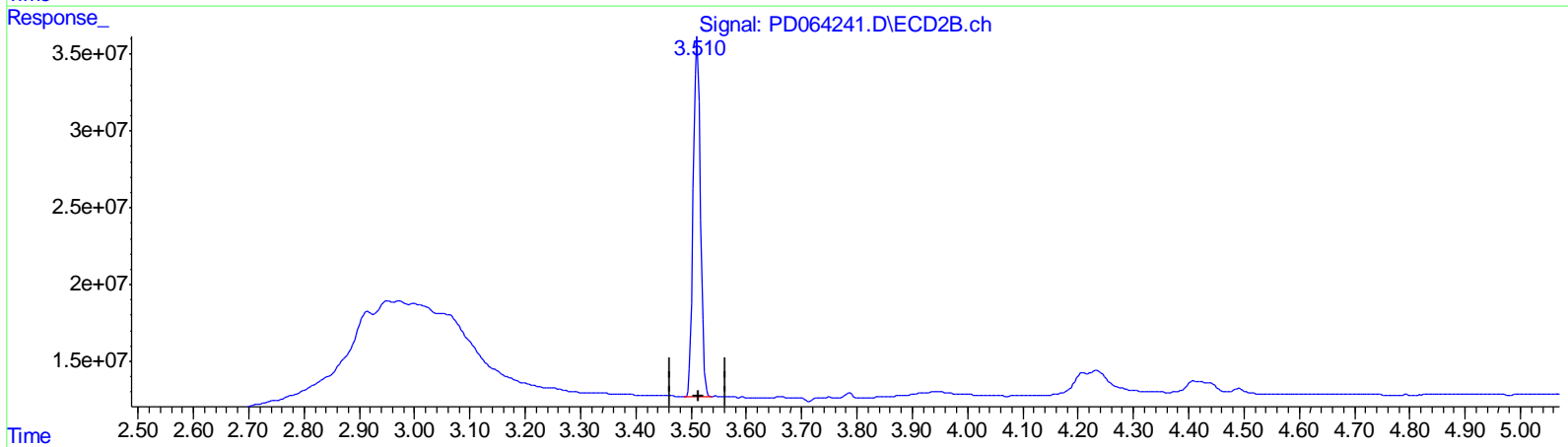
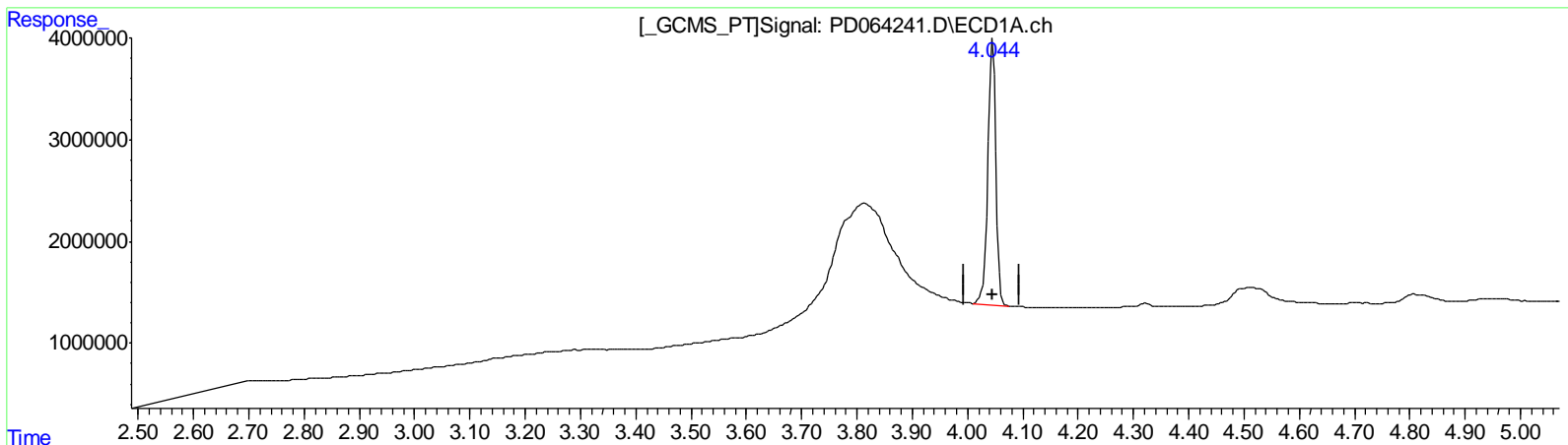


Data Path : Z:\pestpcbsrv\HPCHEM1\ECD_D\Data\PD071321\
 Data File : PD064241.D
 Signal(s) : Signal #1: ECD1A.ch Signal #2: ECD2B.ch
 Acq On : 13 Jul 2021 08:58
 Operator : AR\AJ
 Sample : PIBLK05
 Misc :
 ALS Vial : 2 Sample Multiplier: 1

Integration File signal 1: autoint1.e
 Integration File signal 2: autoint2.e
 Quant Time: Jul 14 01:35:44 2021
 Quant Method : Z:\pestpcbsrv\HPCHEM1\ECD_D\Method\PD070921CLP.M
 Quant Title : GC Extractables
 QLast Update : Sat Jul 10 02:02:54 2021
 Response via : Initial Calibration
 Integrator: ChemStation

Volume Inj. : 1 µl
 Signal #1 Phase : ZB-MR2 Signal #2 Phase: ZB-MR1
 Signal #1 Info : 30M x 0.32mm x0.2 Signal #2 Info : 30M x 0.32mm x 0.50µm



QEdit

(1) Tetrachloro-m-xylene (SA)

4.044min 20.509 ng/ml m

response 26620222

(1) Tetrachloro-m-xylene #2 (SA)

3.512min 21.462 ng/ml

response 208170816

(+) = Expected Retention Time