

Data Path : Z:\pestpcbsrv\HPCHEM1\ECD_D\Data\PD071420\
 Data File : PD058606.D
 Signal(s) : Signal #1: ECD1A.ch Signal #2: ECD2B.ch
 Acq On : 14 Jul 2020 10:42
 Operator : AJ\MA
 Sample : L3273-12
 Misc :
 ALS Vial : 7 Sample Multiplier: 1

Instrument :
 ECD_D
ClientSampleId :
 PEST-GPC2-BLANK-SPIKE

Integration File signal 1: autoint1.e
 Integration File signal 2: autoint2.e
 Quant Time: Jul 15 01:36:42 2020
 Quant Method : Z:\pestpcbsrv\HPCHEM1\ECD_D\Method\PD070220CLP.M
 Quant Title : GC Extractables
 QLast Update : Thu Jul 02 16:12:43 2020
 Response via : Initial Calibration
 Integrator: ChemStation

Volume Inj. : 1 µl
 Signal #1 Phase : ZB-MR2 Signal #2 Phase: ZB-MR1
 Signal #1 Info : 30M x 0.32mm x0.2 Signal #2 Info : 30M x 0.32mm x 0.50µm

Compound	RT#1	RT#2	Resp#1	Resp#2	ng/ml	ng/ml

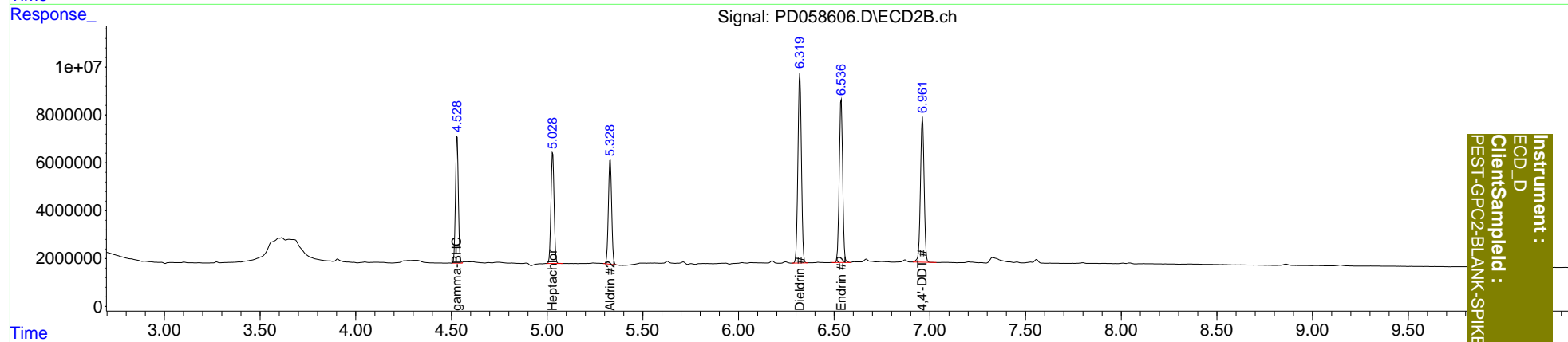
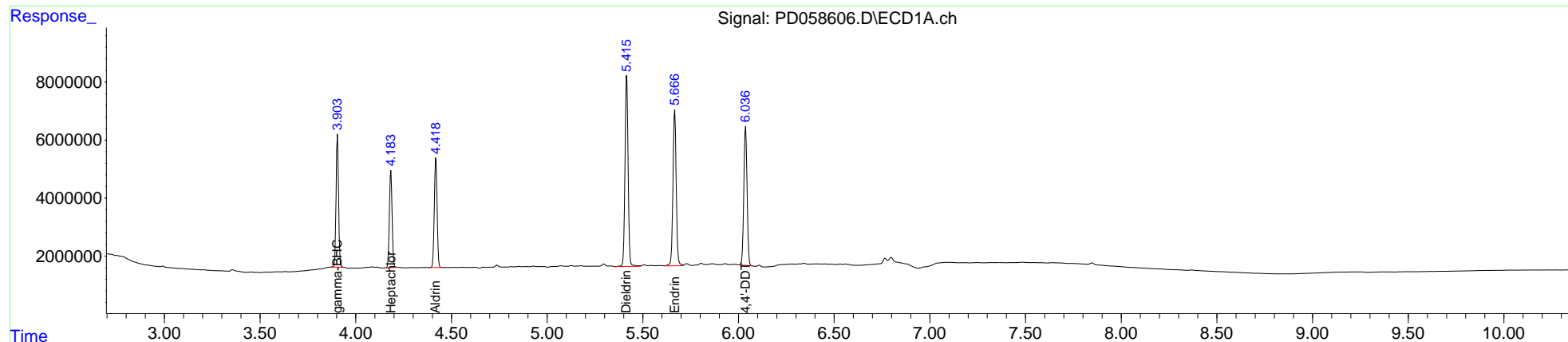
System Monitoring Compounds						
Target Compounds						
3) MA gamma-BHC...	3.905	4.530	41222928	55131761	17.678	17.787
4) MA Heptachlor	4.184	5.030	33092952	53073846	20.905	18.258
5) MB Aldrin	4.419	5.330	38351593	52056434	17.952	18.758
13) MA Dieldrin	5.416	6.321	74207707	100.7E6	43.031	36.978
14) MA Endrin	5.667	6.537	63657156	85324037	43.093	37.356
17) MA 4,4'-DDT	6.037	6.962	56343616	80966114	39.699	35.913

(f)=RT Delta > 1/2 Window (#)=Amounts differ by > 25% (m)=manual int.

Data Path : Z:\pestpcbsrv\HPCHEM1\ECD_D\Data\PD071420\
 Data File : PD058606.D
 Signal(s) : Signal #1: ECD1A.ch Signal #2: ECD2B.ch
 Acq On : 14 Jul 2020 10:42
 Operator : AJ\MA
 Sample : L3273-12
 Misc :
 ALS Vial : 7 Sample Multiplier: 1

Integration File signal 1: autoint1.e
 Integration File signal 2: autoint2.e
 Quant Time: Jul 15 01:36:42 2020
 Quant Method : Z:\pestpcbsrv\HPCHEM1\ECD_D\Method\PD070220CLP.M
 Quant Title : GC Extractables
 QLast Update : Thu Jul 02 16:12:43 2020
 Response via : Initial Calibration
 Integrator: ChemStation

Volume Inj. : 1 µl
 Signal #1 Phase : ZB-MR2 Signal #2 Phase: ZB-MR1
 Signal #1 Info : 30M x 0.32mm x0.2 Signal #2 Info : 30M x 0.32mm x 0.50µm



Instrument :
 ECD_D
 ClientSampleId :
 PEST-GPC2-BLANK-SPIKE