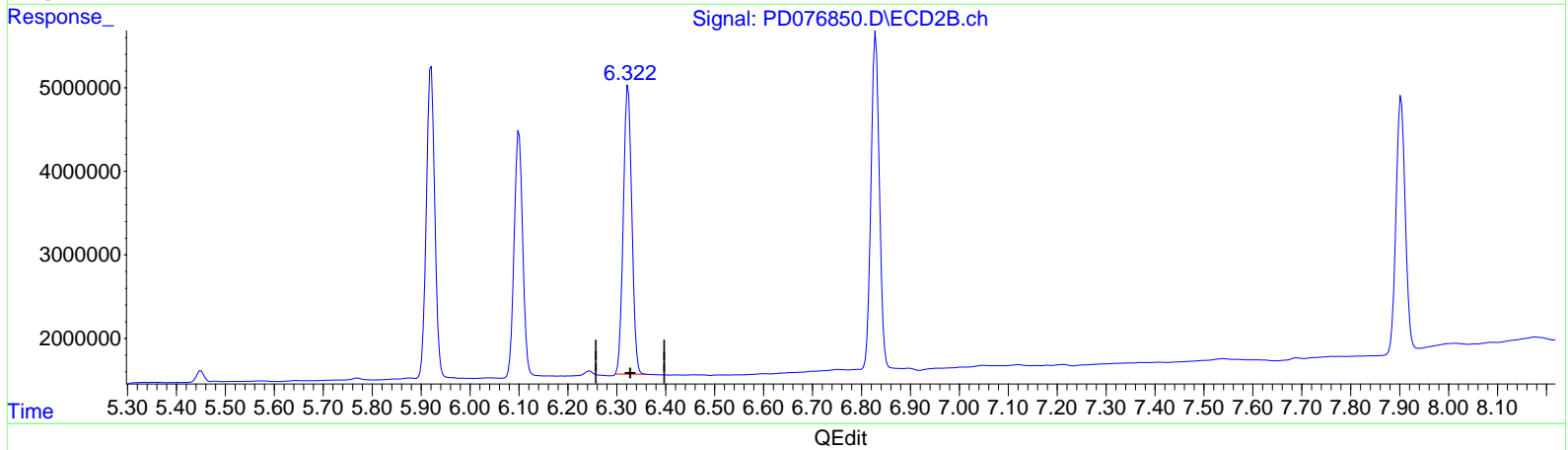
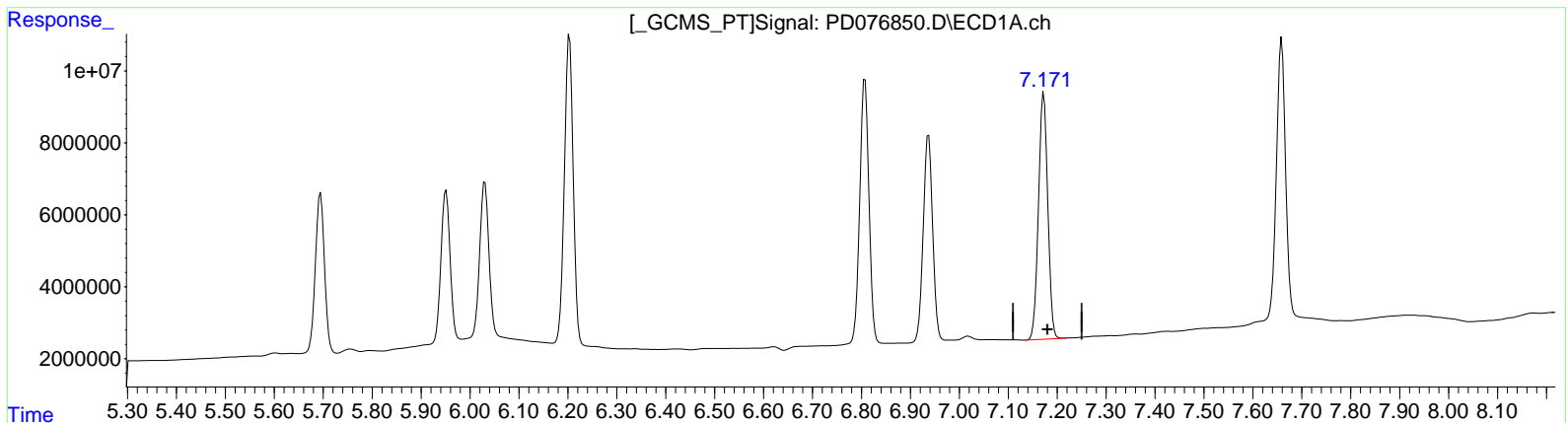


Data Path : Z:\pestpcbsrv\HPCHEM1\ECD_D\Data\PD071723\
 Data File : PD076850.D
 Signal(s) : Signal #1: ECD1A.ch Signal #2: ECD2B.ch
 Acq On : 17 Jul 2023 21:05
 Operator : AR\AJ
 Sample : INDB451
 Misc :
 ALS Vial : 20 Sample Multiplier: 1

Integration File signal 1: autoint1.e
 Integration File signal 2: autoint2.e
 Quant Time: Jul 18 13:22:42 2023
 Quant Method : Z:\pestpcbsrv\HPCHEM1\ECD_D\Method\PD071423CLP.M
 Quant Title : GC Extractables
 QLast Update : Fri Jul 14 14:58:34 2023
 Response via : Initial Calibration
 Integrator: ChemStation

Volume Inj. : 1 µl
 Signal #1 Phase : ZB-MR1 Signal #2 Phase: ZB-MR2
 Signal #1 Info : 30M x 0.32mm x0.5 Signal #2 Info : 30M x 0.32mm x 0.25µm



(19) Endosulfan Sulfate (B)
 7.173min 36.176 ng/ml
 response 90343655

(19) Endosulfan Sulfate #2 (B)
 6.323min 37.501 ng/ml
 response 41839881