

Data Path : Z:\pestpcbsrv\HPCHEM1\ECD_D\Data\PD071423\
 Data File : PD076715.D
 Signal(s) : Signal #1: ECD1A.ch Signal #2: ECD2B.ch
 Acq On : 15 Jul 2023 01:10
 Operator : AR\AJ
 Sample : 03437-11MS
 Misc :
 ALS Vial : 56 Sample Multiplier: 1

Instrument :
 ECD_D
ClientSampleId :
 A46K7MS

Manual Integrations
APPROVED

Reviewed By :Abdul Mirza 07/17/2023
 Supervised By :Ankita Jodhani 07/17/2023

Integration File signal 1: autoint1.e
 Integration File signal 2: autoint2.e
 Quant Time: Jul 15 06:46:41 2023
 Quant Method : Z:\pestpcbsrv\HPCHEM1\ECD_D\Method\PD071423CLP.M
 Quant Title : GC Extractables
 QLast Update : Fri Jul 14 14:58:34 2023
 Response via : Initial Calibration
 Integrator: ChemStation

Volume Inj. : 1 µl
 Signal #1 Phase : ZB-MR1 Signal #2 Phase: ZB-MR2
 Signal #1 Info : 30M x 0.32mm x0.5 Signal #2 Info : 30M x 0.32mm x 0.25µm

Compound	RT#1	RT#2	Resp#1	Resp#2	ng/ml	ng/ml

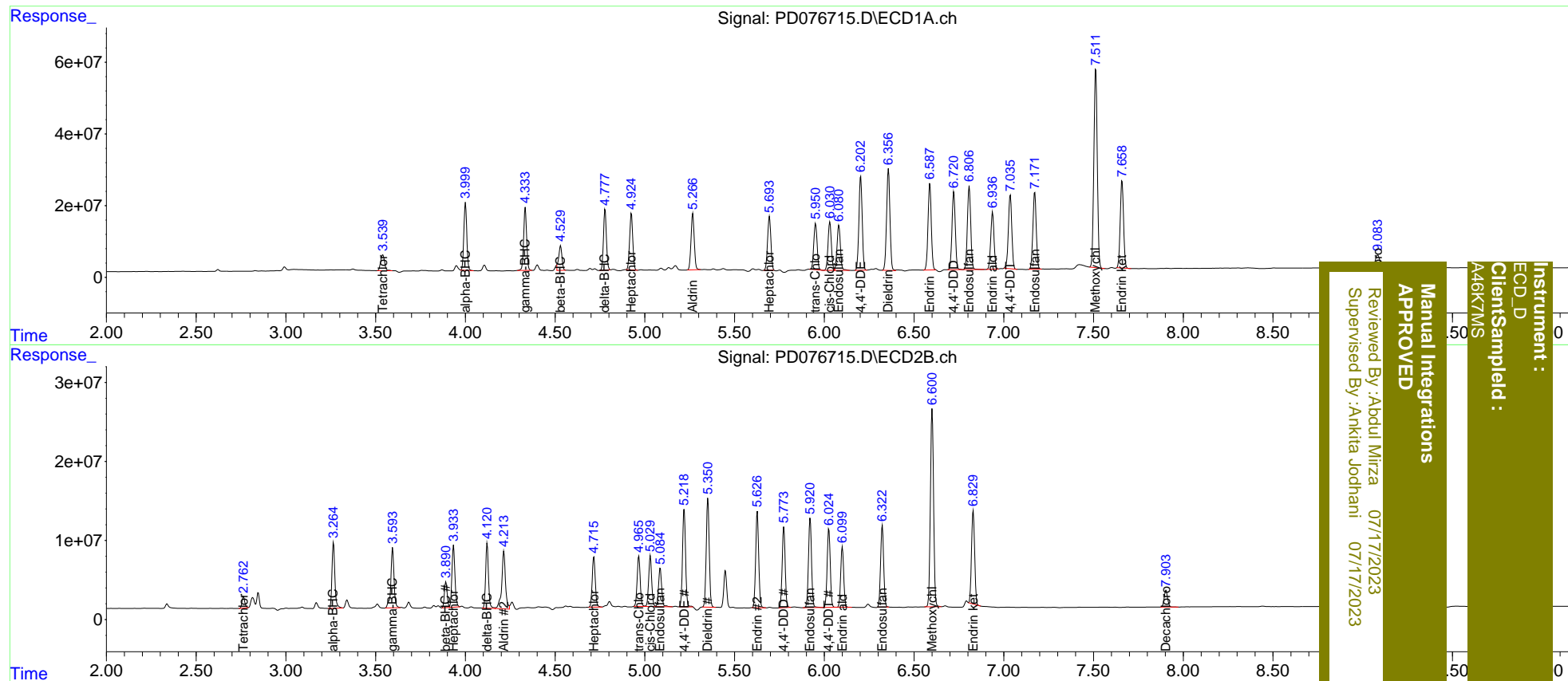
System Monitoring Compounds						
1) SA Tetrachlo...	3.539	2.764	68363169	15496602	32.135m	14.518 #
2) SA Decachlor...	9.084	7.904	64371255	28283098	26.496	26.384
Target Compounds						
2) A alpha-BHC	3.999	3.265	214.7E6	91941303	60.565m	58.104
3) MA gamma-BHC...	4.333	3.593	203.6E6	92878493	61.384m	61.996m
4) MA Heptachlor	4.925	3.934	192.1E6	89993562	55.251	60.188
5) MB Aldrin	5.267	4.215	195.4E6	104.6E6	57.131	69.529
6) B beta-BHC	4.529	3.892	87397588	34762306	57.500m	48.525
7) B delta-BHC	4.779	4.122	192.2E6	89823783	57.322	58.850
8) B Heptachlo...	5.694	4.716	191.1E6	76273858	63.770	54.215
9) A Endosulfan I	6.081	5.086	163.9E6	59199267	57.556	47.780
10) B trans-Chl...	5.952	4.967	166.9E6	74293270	54.286	54.941
11) B cis-Chlor...	6.031	5.031	174.3E6	74799085	54.980	53.018
12) B 4,4'-DDE	6.203	5.219	334.0E6	145.5E6	114.643	120.357
13) MA Dieldrin	6.358	5.351	367.3E6	161.0E6	116.422	115.485
14) MA Endrin	6.588	5.627	304.1E6	143.0E6	117.962	115.644
15) B Endosulfa...	6.808	5.922	299.8E6	134.1E6	112.744	111.524
16) A 4,4'-DDD	6.722	5.775	277.4E6	117.7E6	122.780	124.196
17) MA 4,4'-DDT	7.037	6.026	273.1E6	120.0E6	122.324	128.093
18) B Endrin al...	6.938	6.101	201.3E6	89117315	107.642	106.243
19) B Endosulfa...	7.173	6.323	277.2E6	123.5E6	111.016	110.709
20) A Methoxychlor	7.513	6.600	735.0E6	308.2E6	555.275	577.553m
21) B Endrin ke...	7.659	6.829	313.0E6	143.0E6	113.029	111.778m

(f)=RT Delta > 1/2 Window (#)=Amounts differ by > 25% (m)=manual int.

Data Path : Z:\pestpcbsrv\HPCHEM1\ECD_D\Data\PD071423\
 Data File : PD076715.D
 Signal(s) : Signal #1: ECD1A.ch Signal #2: ECD2B.ch
 Acq On : 15 Jul 2023 01:10
 Operator : AR\AJ
 Sample : 03437-11MS
 Misc :
 ALS Vial : 56 Sample Multiplier: 1

Integration File signal 1: autoint1.e
 Integration File signal 2: autoint2.e
 Quant Time: Jul 15 06:46:41 2023
 Quant Method : Z:\pestpcbsrv\HPCHEM1\ECD_D\Method\PD071423CLP.M
 Quant Title : GC Extractables
 QLast Update : Fri Jul 14 14:58:34 2023
 Response via : Initial Calibration
 Integrator: ChemStation

Volume Inj. : 1 µl
 Signal #1 Phase : ZB-MR1 Signal #2 Phase: ZB-MR2
 Signal #1 Info : 30M x 0.32mm x0.5 Signal #2 Info : 30M x 0.32mm x 0.25µm



Instrument : ECD_D
 Client/Sampled : A46KTMS
 Manual Integrations APPROVED
 Reviewed By : Aboul Mirza 07/17/2023
 Supervised By : Ankita Jodhani 07/17/2023