

Data Path : Z:\pestpcbsrv\HPCHEM1\ECD\_D\Data\PD071521\  
 Data File : PD064275.D  
 Signal(s) : Signal #1: ECD1A.ch Signal #2: ECD2B.ch  
 Acq On : 15 Jul 2021 14:58  
 Operator : AR\AJ  
 Sample : M2970-15  
 Misc :  
 ALS Vial : 12 Sample Multiplier: 1

Instrument :  
 ECD\_D  
 ClientSampled :

Integration File signal 1: autoint1.e  
 Integration File signal 2: autoint2.e  
 Quant Time: Jul 16 05:29:45 2021  
 Quant Method : Z:\pestpcbsrv\HPCHEM1\ECD\_D\Method\PD070921CLP.M  
 Quant Title : GC Extractables  
 QLast Update : Wed Jul 14 06:42:28 2021  
 Response via : Initial Calibration  
 Integrator: ChemStation

Volume Inj. : 1 µl  
 Signal #1 Phase : ZB-MR2 Signal #2 Phase: ZB-MR1  
 Signal #1 Info : 30M x 0.32mm x0.2 Signal #2 Info : 30M x 0.32mm x 0.50µm

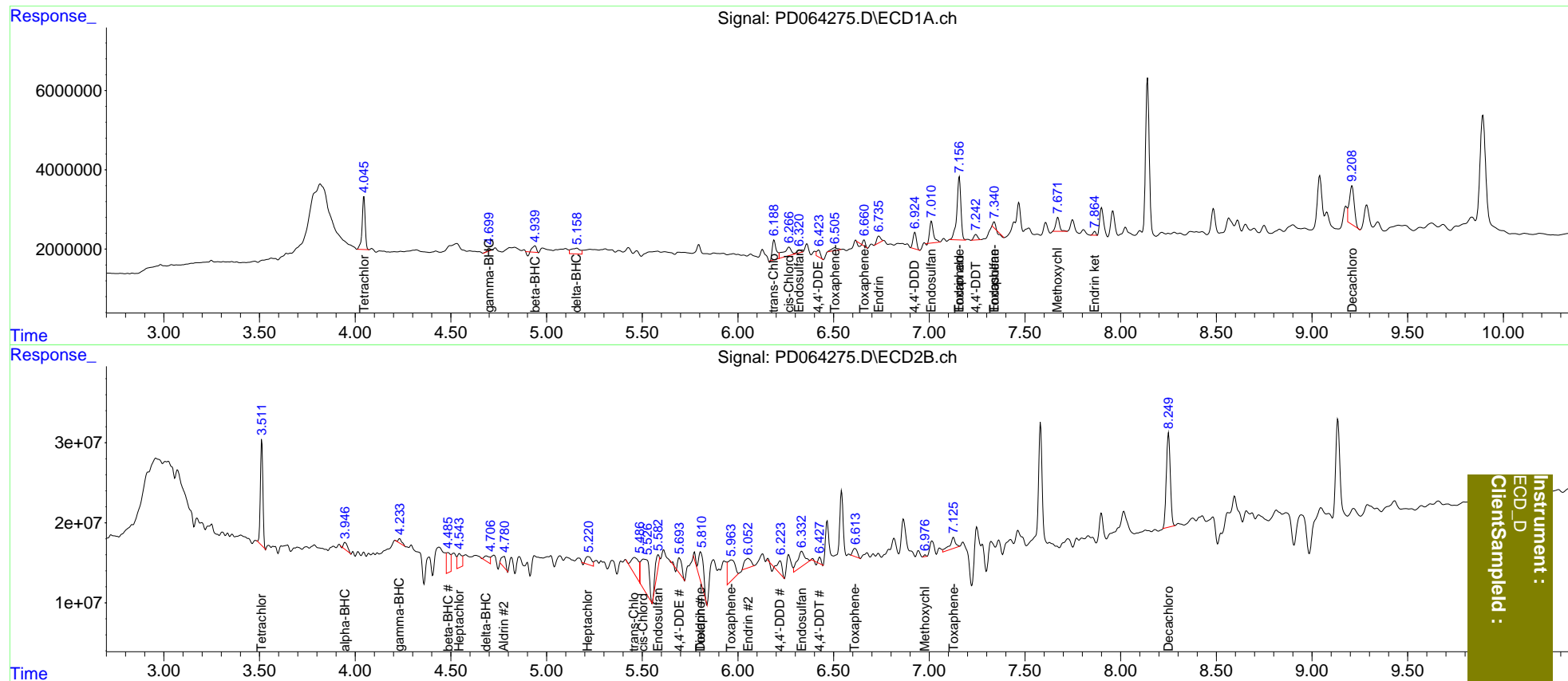
Compound	RT#1	RT#2	Resp#1	Resp#2	ng/ml	ng/ml
System Monitoring Compounds						
1) SA Tetrachlo...	4.046	3.512	14639574	120.1E6	10.942	12.024
27) SA Decachlor...	9.209	8.251	17482411	172.1E6	16.301	32.950 #
Target Compounds						
2) A alpha-BHC	0.000	3.947	0	11566066	N.D.	0.865
3) MA gamma-BHC...	4.700f	4.233	706496	6943555	0.397	0.571 #
4) MA Heptachlor	0.000	4.545	0	28111801	N.D.	2.466
5) MB Aldrin	0.000	4.778	0	21338027	N.D.	2.060
6) B beta-BHC	4.940	4.486	1723323	35886199	2.054	6.603 #
7) B delta-BHC	5.159	4.685	4734544	13794499	2.772	1.255 #
8) B Heptachlo...	0.000	5.216	0	20344578	N.D.	2.227
9) A Endosulfan I	6.321	5.584	1112614	27053944	0.805	3.200 #
10) B trans-Chl...	6.189	5.460	7044796	60479156	4.457	6.501 #
11) B cis-Chlor...	6.267	5.507	6339891	123.4E6	4.043	13.632 #
12) B 4,4'-DDE	6.423	5.694	2284030	31331900	1.649	3.739 #
13) MA Dieldrin	0.000	5.805	0	76868004	N.D.	8.992
14) MA Endrin	6.737f	6.054	2355849	28223584	1.995	3.872 #
15) B Endosulfa...	7.011	6.333	7462811	51537466	6.175	7.922 #
16) A 4,4'-DDD	6.925	6.221f	5174769	22760584	4.545	3.384 #
17) MA 4,4'-DDT	7.244	6.428	1895363	6368576	1.642	0.910 #
18) B Endrin al...	7.157	6.542f	23504323	-49190531	22.833	N.D. #
19) B Endosulfa...	7.339	6.708	820939	-2480815	0.667	N.D. #
20) A Methoxychlor	7.672	6.979	4791118	1532089	7.467	0.496 #
21) B Endrin ke...	7.865	0.000	922035	0	0.694	N.D. #
22) Toxaphene-1	6.506	5.805	1707940	76868004	235.572	1450.226 #
23) Toxaphene-2	6.660	5.966	612509	68985908	52.374	742.267 #
24) Toxaphene-3	7.157	6.542	23504323	-49190531	2102.871	N.D. #
25) Toxaphene-4	7.339	6.612	820939	17451225	36.795	135.848 #
26) Toxaphene-5	7.806	7.126	-1937044	28815694	N.D.	231.537

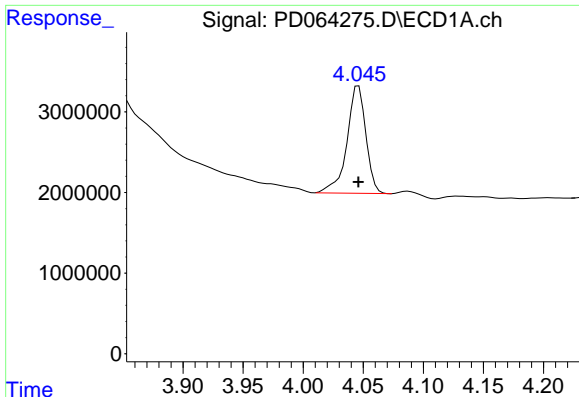
(f)=RT Delta > 1/2 Window (#)=Amounts differ by > 25% (m)=manual int.

Data Path : Z:\pestpcbsrv\HPCHEM1\ECD\_D\Data\PD071521\  
 Data File : PD064275.D  
 Signal(s) : Signal #1: ECD1A.ch Signal #2: ECD2B.ch  
 Acq On : 15 Jul 2021 14:58  
 Operator : AR\AJ  
 Sample : M2970-15  
 Misc :  
 ALS Vial : 12 Sample Multiplier: 1

Integration File signal 1: autoint1.e  
 Integration File signal 2: autoint2.e  
 Quant Time: Jul 16 05:29:45 2021  
 Quant Method : Z:\pestpcbsrv\HPCHEM1\ECD\_D\Method\PD070921CLP.M  
 Quant Title : GC Extractables  
 QLast Update : Wed Jul 14 06:42:28 2021  
 Response via : Initial Calibration  
 Integrator: ChemStation

Volume Inj. : 1 µl  
 Signal #1 Phase : ZB-MR2 Signal #2 Phase: ZB-MR1  
 Signal #1 Info : 30M x 0.32mm x0.2 Signal #2 Info : 30M x 0.32mm x 0.50µm

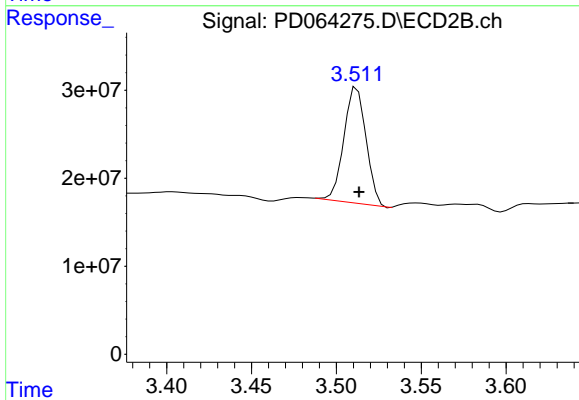




#1 Tetrachloro-m-xylene

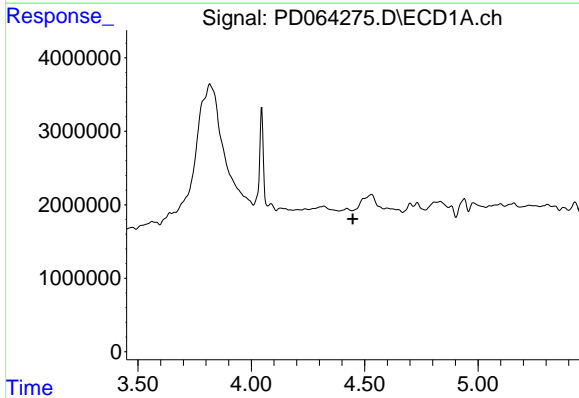
R.T.: 4.046 min  
 Delta R.T.: 0.000 min  
 Response: 14639574  
 Conc: 10.94 ng/ml

Instrument :  
 ECD\_D  
 ClientSampled :



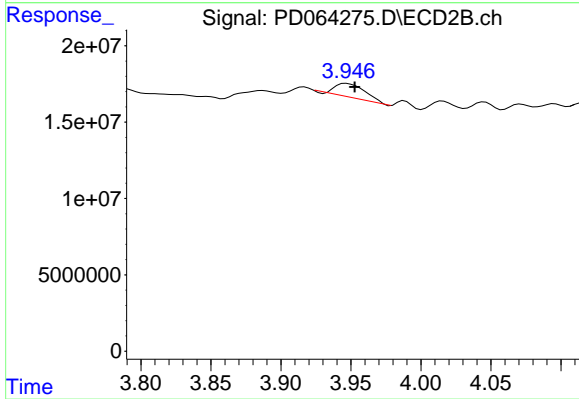
#1 Tetrachloro-m-xylene

R.T.: 3.512 min  
 Delta R.T.: -0.001 min  
 Response: 120132257  
 Conc: 12.02 ng/ml



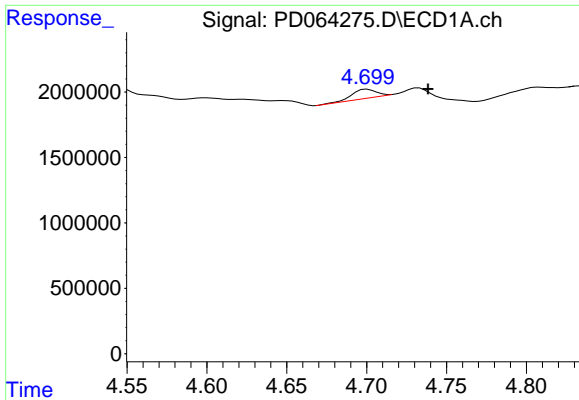
#2 alpha-BHC

R.T.: 0.000 min  
 Exp R.T. : 4.447 min  
 Response: 0  
 Conc: N.D.



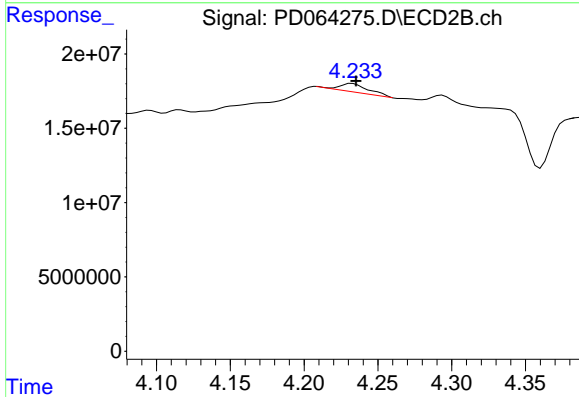
#2 alpha-BHC

R.T.: 3.947 min  
 Delta R.T.: -0.006 min  
 Response: 11566066  
 Conc: 0.86 ng/ml

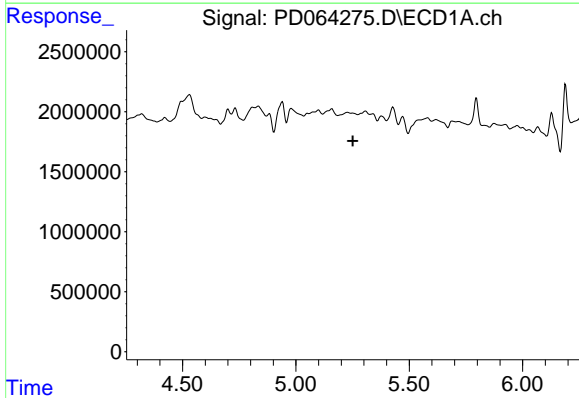


#3 gamma-BHC (Lindane)  
 R.T.: 4.700 min  
 Delta R.T.: -0.038 min  
 Response: 706496  
 Conc: 0.40 ng/ml

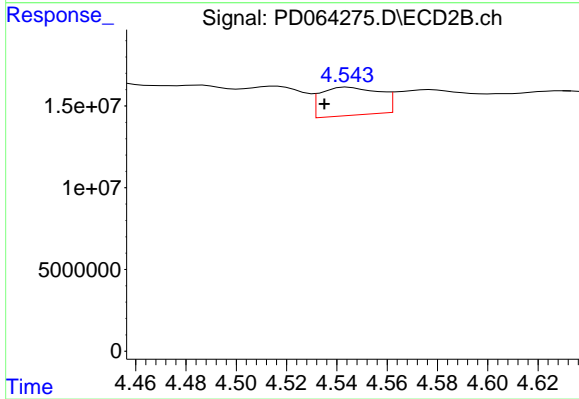
Instrument :  
 ECD\_D  
 ClientSampled :



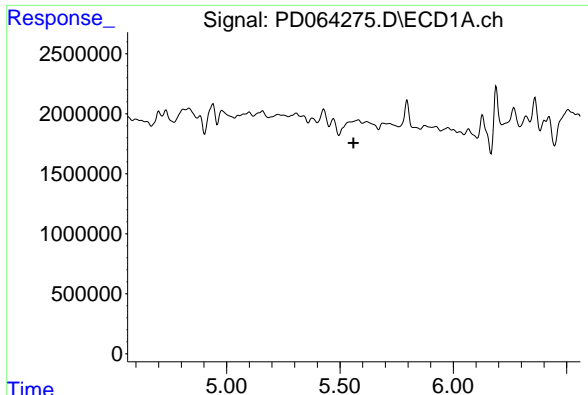
#3 gamma-BHC (Lindane)  
 R.T.: 4.233 min  
 Delta R.T.: -0.003 min  
 Response: 6943555  
 Conc: 0.57 ng/ml



#4 Heptachlor  
 R.T.: 0.000 min  
 Exp R.T. : 5.251 min  
 Response: 0  
 Conc: N.D.

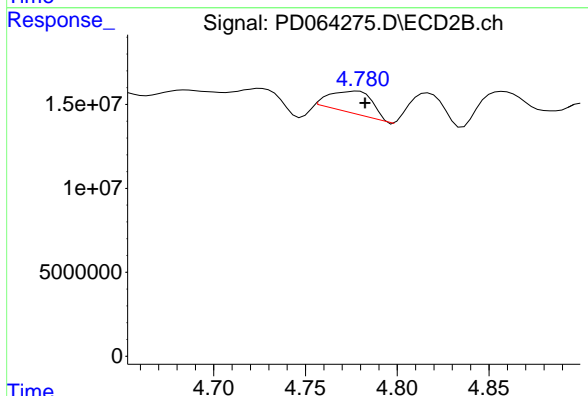


#4 Heptachlor  
 R.T.: 4.545 min  
 Delta R.T.: 0.009 min  
 Response: 28111801  
 Conc: 2.47 ng/ml

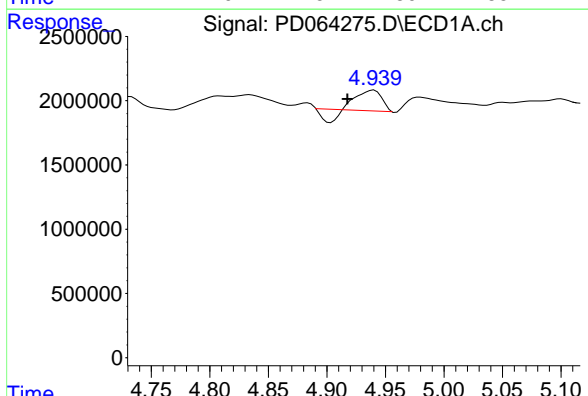


#5 Aldrin  
 R.T.: 0.000 min  
 Exp R.T.: 5.560 min  
 Response: 0  
 Conc: N.D.

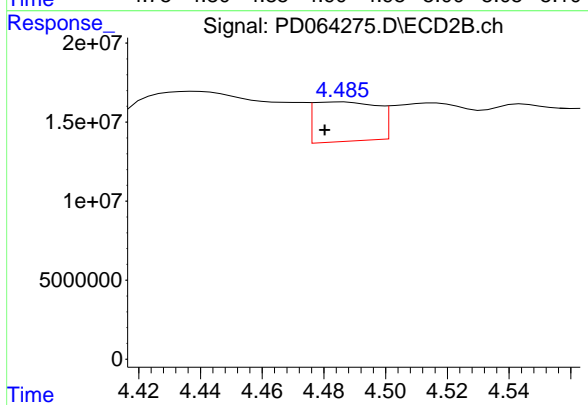
Instrument :  
 ECD\_D  
 ClientSampled :



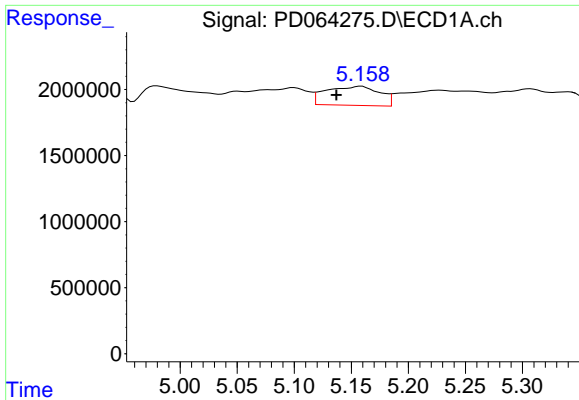
#5 Aldrin  
 R.T.: 4.778 min  
 Delta R.T.: -0.004 min  
 Response: 21338027  
 Conc: 2.06 ng/ml



#6 beta-BHC  
 R.T.: 4.940 min  
 Delta R.T.: 0.023 min  
 Response: 1723323  
 Conc: 2.05 ng/ml

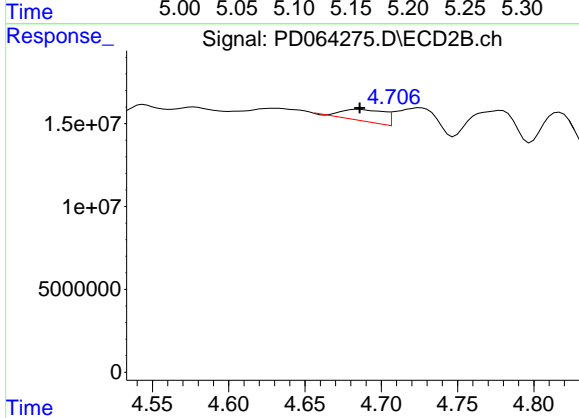


#6 beta-BHC  
 R.T.: 4.486 min  
 Delta R.T.: 0.006 min  
 Response: 35886199  
 Conc: 6.60 ng/ml

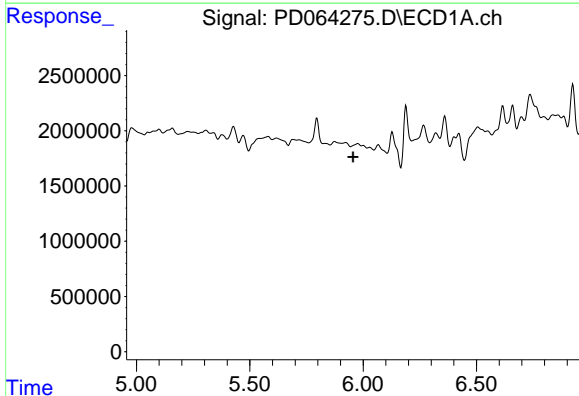


#7 delta-BHC  
 R.T.: 5.159 min  
 Delta R.T.: 0.022 min  
 Response: 4734544  
 Conc: 2.77 ng/ml

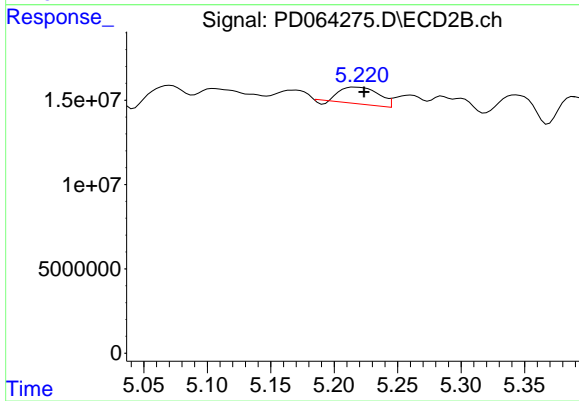
Instrument :  
 ECD\_D  
 ClientSampled :



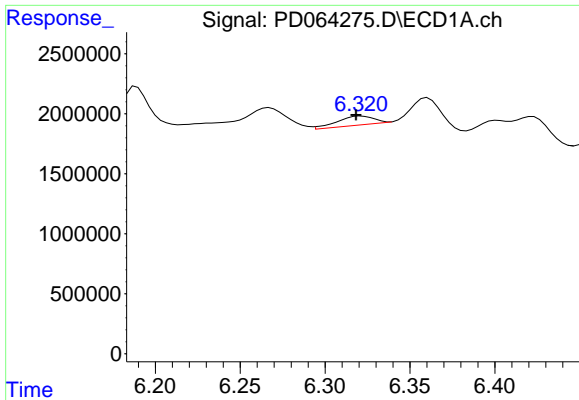
#7 delta-BHC  
 R.T.: 4.685 min  
 Delta R.T.: 0.000 min  
 Response: 13794499  
 Conc: 1.25 ng/ml



#8 Heptachlor epoxide  
 R.T.: 0.000 min  
 Exp R.T. : 5.955 min  
 Response: 0  
 Conc: N.D.

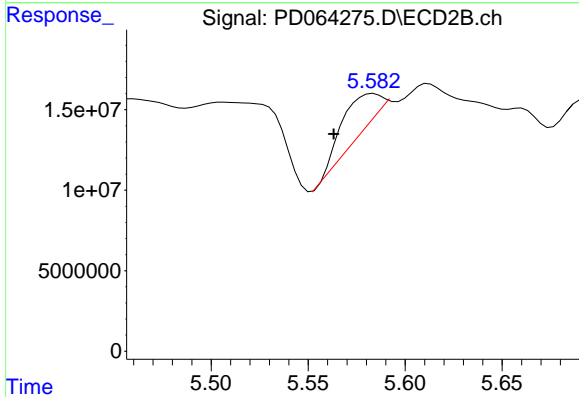


#8 Heptachlor epoxide  
 R.T.: 5.216 min  
 Delta R.T.: -0.007 min  
 Response: 20344578  
 Conc: 2.23 ng/ml

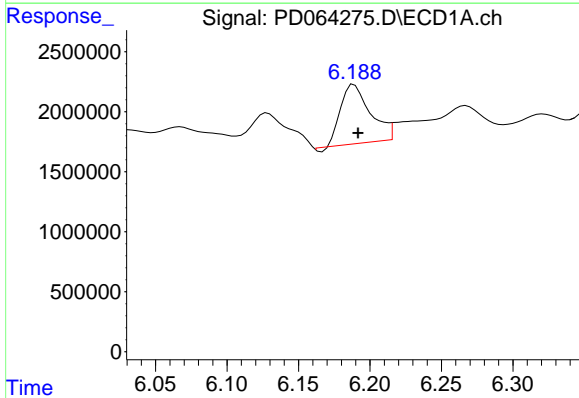


#9 Endosulfan I  
 R.T.: 6.321 min  
 Delta R.T.: 0.003 min  
 Response: 1112614  
 Conc: 0.81 ng/ml

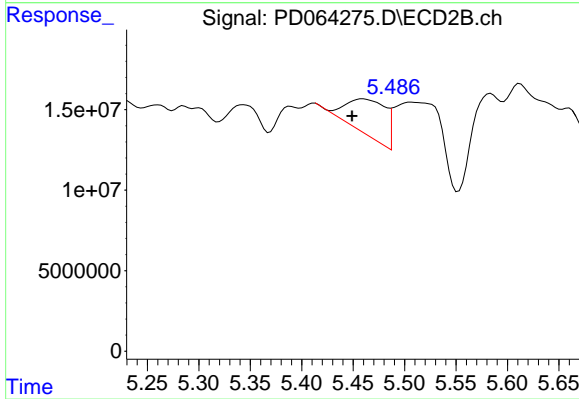
Instrument :  
 ECD\_D  
 ClientSampleId :



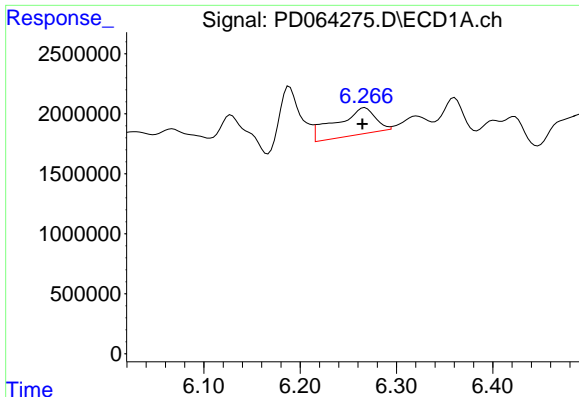
#9 Endosulfan I  
 R.T.: 5.584 min  
 Delta R.T.: 0.021 min  
 Response: 27053944  
 Conc: 3.20 ng/ml



#10 trans-Chlordane  
 R.T.: 6.189 min  
 Delta R.T.: -0.003 min  
 Response: 7044796  
 Conc: 4.46 ng/ml



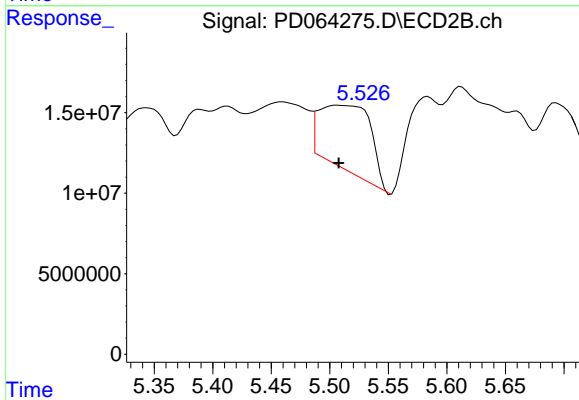
#10 trans-Chlordane  
 R.T.: 5.460 min  
 Delta R.T.: 0.011 min  
 Response: 60479156  
 Conc: 6.50 ng/ml



#11 cis-Chlordane

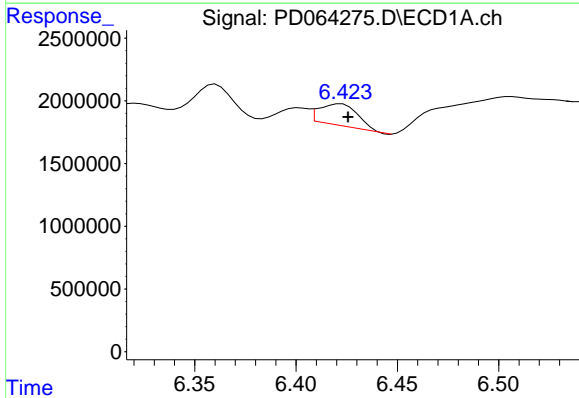
R.T.: 6.267 min  
Delta R.T.: 0.003 min  
Response: 6339891  
Conc: 4.04 ng/ml

Instrument :  
ECD\_D  
ClientSampleId :



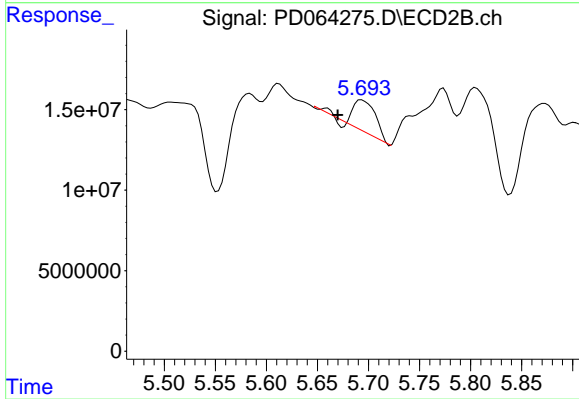
#11 cis-Chlordane

R.T.: 5.507 min  
Delta R.T.: 0.000 min  
Response: 123427492  
Conc: 13.63 ng/ml



#12 4,4'-DDE

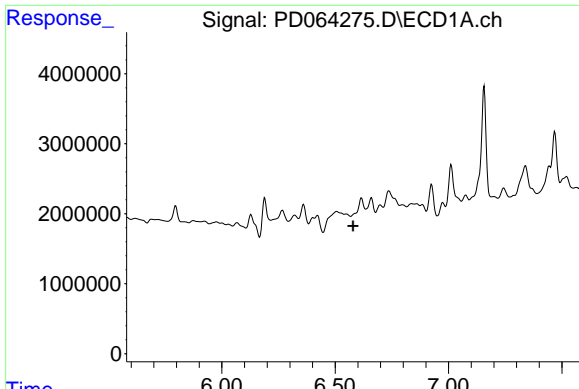
R.T.: 6.423 min  
Delta R.T.: -0.003 min  
Response: 2284030  
Conc: 1.65 ng/ml



#12 4,4'-DDE

R.T.: 5.694 min  
Delta R.T.: 0.024 min  
Response: 31331900  
Conc: 3.74 ng/ml

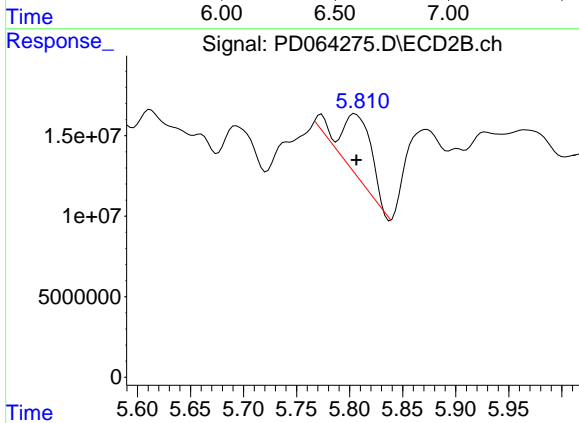




#13 Dieldrin

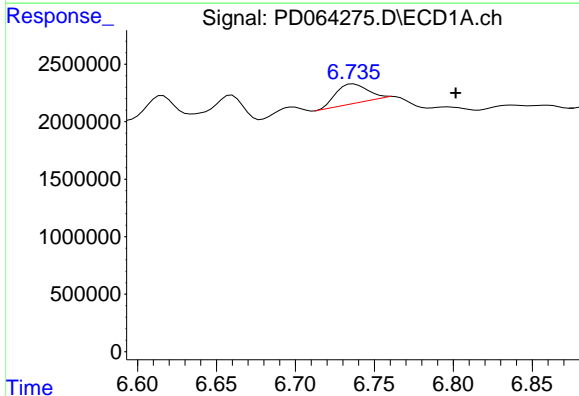
R.T.: 0.000 min  
 Exp R.T.: 6.580 min  
 Response: 0  
 Conc: N.D.

Instrument :  
 ECD\_D  
 ClientSampled :



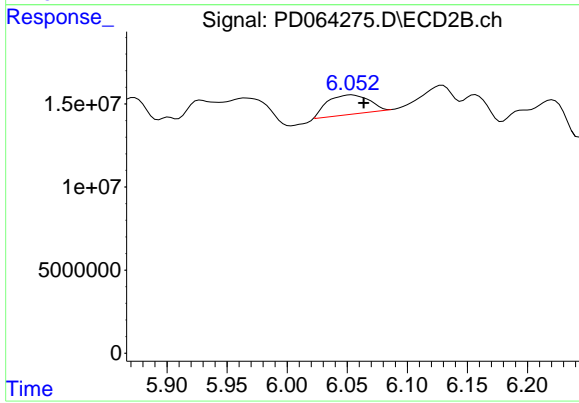
#13 Dieldrin

R.T.: 5.805 min  
 Delta R.T.: 0.000 min  
 Response: 76868004  
 Conc: 8.99 ng/ml



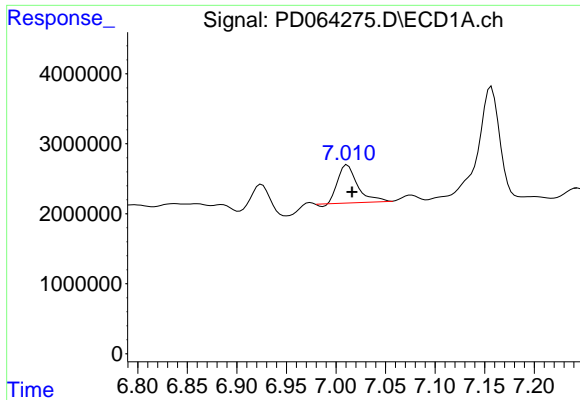
#14 Endrin

R.T.: 6.737 min  
 Delta R.T.: -0.065 min  
 Response: 2355849  
 Conc: 2.00 ng/ml



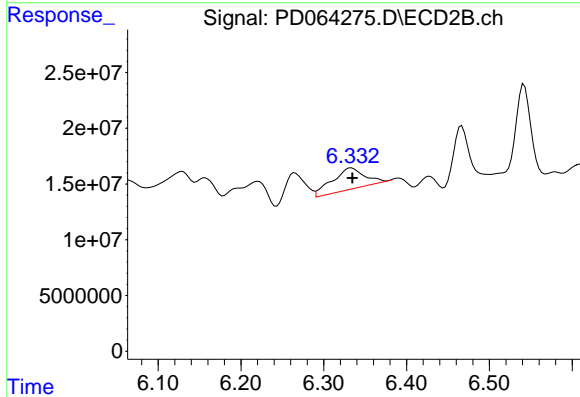
#14 Endrin

R.T.: 6.054 min  
 Delta R.T.: -0.010 min  
 Response: 28223584  
 Conc: 3.87 ng/ml

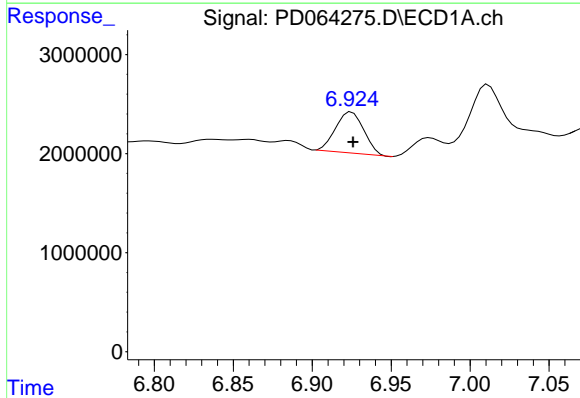


#15 Endosulfan II  
 R.T.: 7.011 min  
 Delta R.T.: -0.005 min  
 Response: 7462811  
 Conc: 6.17 ng/ml

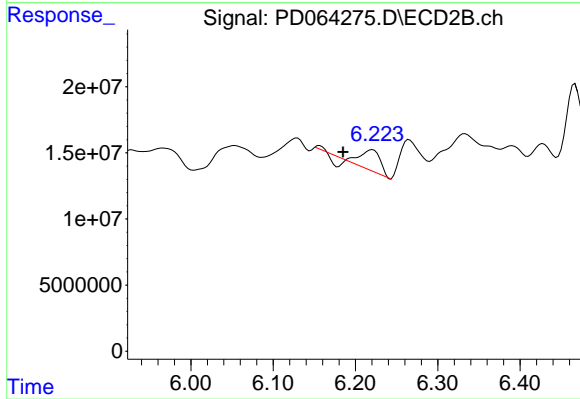
Instrument :  
 ECD\_D  
 ClientSampleId :



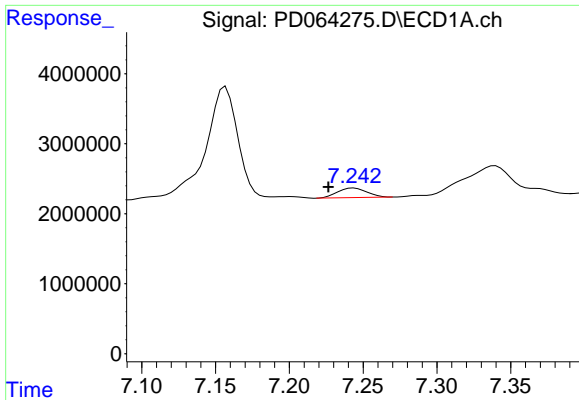
#15 Endosulfan II  
 R.T.: 6.333 min  
 Delta R.T.: -0.001 min  
 Response: 51537466  
 Conc: 7.92 ng/ml



#16 4,4'-DDD  
 R.T.: 6.925 min  
 Delta R.T.: 0.000 min  
 Response: 5174769  
 Conc: 4.54 ng/ml

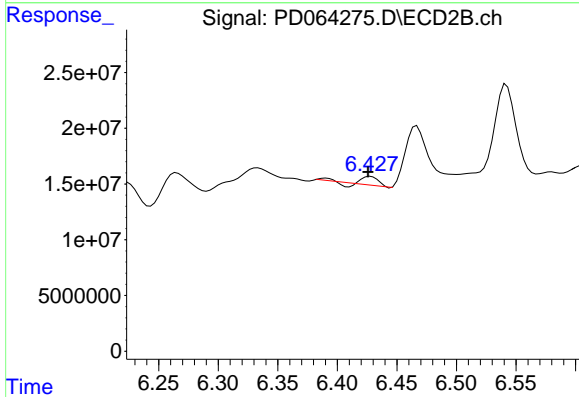


#16 4,4'-DDD  
 R.T.: 6.221 min  
 Delta R.T.: 0.035 min  
 Response: 22760584  
 Conc: 3.38 ng/ml

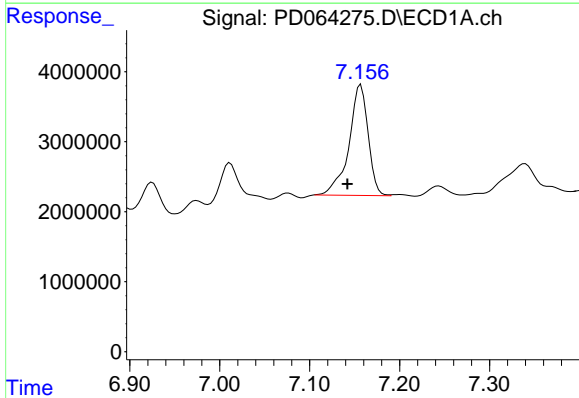


#17 4,4'-DDT  
 R.T.: 7.244 min  
 Delta R.T.: 0.017 min  
 Response: 1895363  
 Conc: 1.64 ng/ml

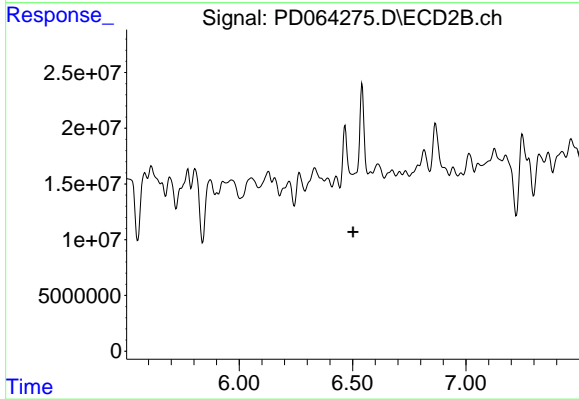
Instrument :  
 ECD\_D  
 ClientSampleId :



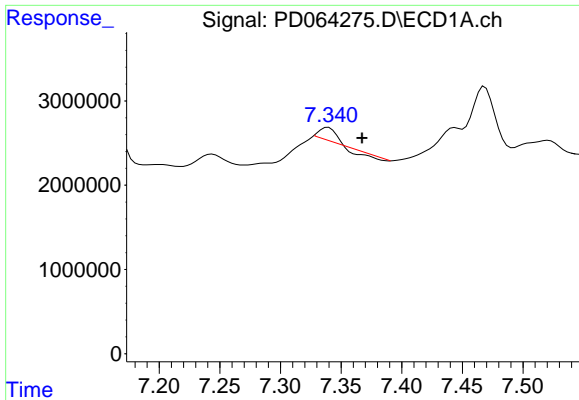
#17 4,4'-DDT  
 R.T.: 6.428 min  
 Delta R.T.: 0.002 min  
 Response: 6368576  
 Conc: 0.91 ng/ml



#18 Endrin aldehyde  
 R.T.: 7.157 min  
 Delta R.T.: 0.015 min  
 Response: 23504323  
 Conc: 22.83 ng/ml

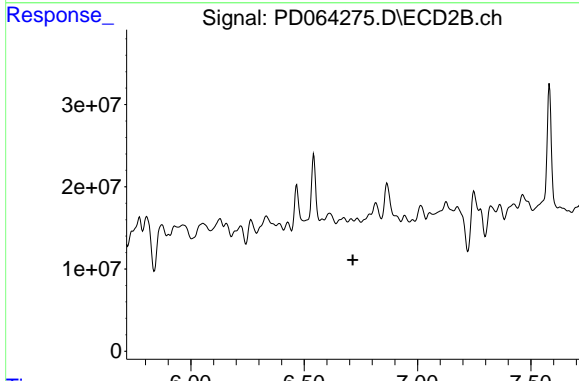


#18 Endrin aldehyde  
 R.T.: 6.542 min  
 Delta R.T.: 0.039 min  
 Response: -49190531  
 Conc: N.D.

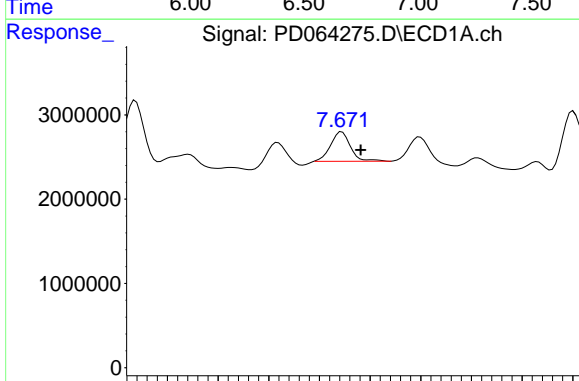


#19 Endosulfan Sulfate  
 R.T.: 7.339 min  
 Delta R.T.: -0.028 min  
 Response: 820939  
 Conc: 0.67 ng/ml

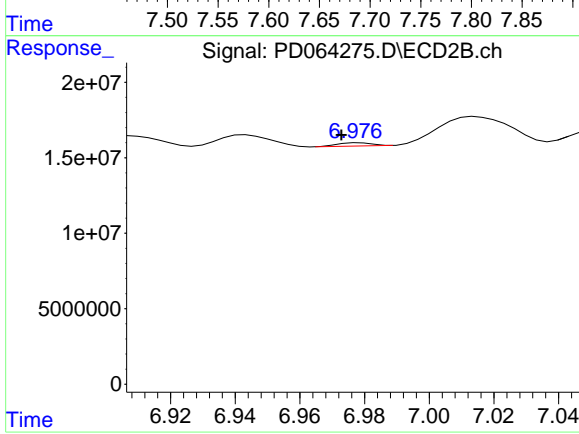
Instrument :  
 ECD\_D  
 ClientSampled :



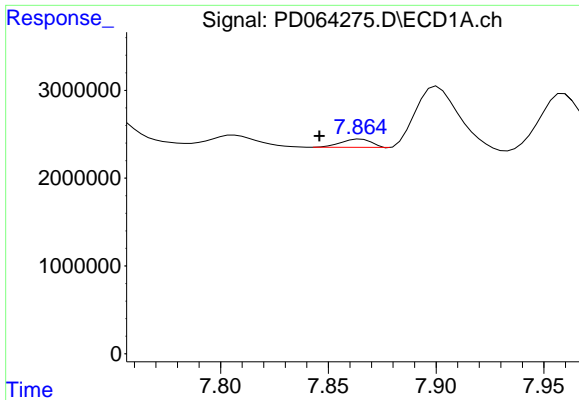
#19 Endosulfan Sulfate  
 R.T.: 6.708 min  
 Delta R.T.: -0.007 min  
 Response: -2480815  
 Conc: N.D.



#20 Methoxychlor  
 R.T.: 7.672 min  
 Delta R.T.: -0.019 min  
 Response: 4791118  
 Conc: 7.47 ng/ml

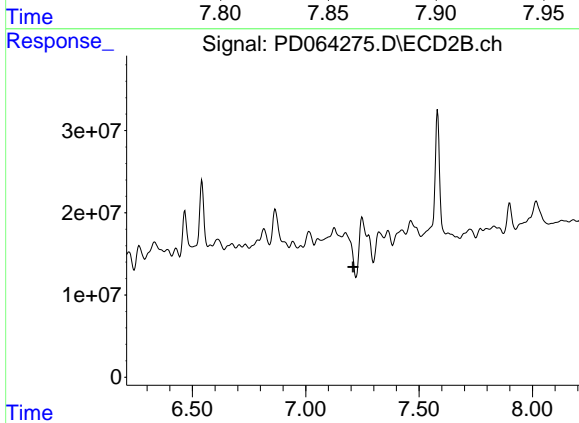


#20 Methoxychlor  
 R.T.: 6.979 min  
 Delta R.T.: 0.006 min  
 Response: 1532089  
 Conc: 0.50 ng/ml

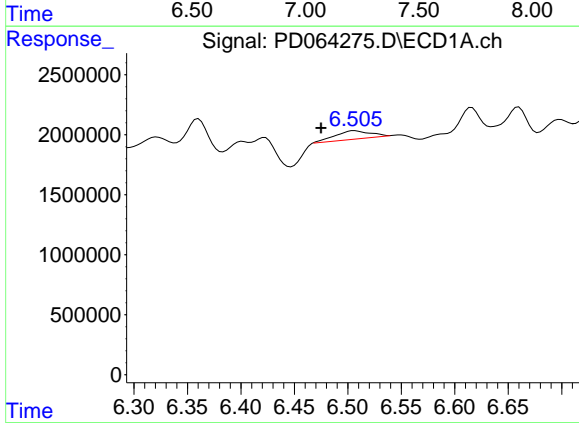


#21 Endrin ketone  
 R.T.: 7.865 min  
 Delta R.T.: 0.019 min  
 Response: 922035  
 Conc: 0.69 ng/ml

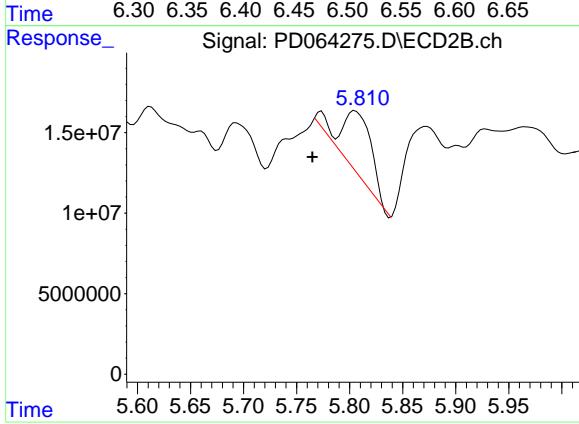
Instrument :  
 ECD\_D  
 ClientSampled :



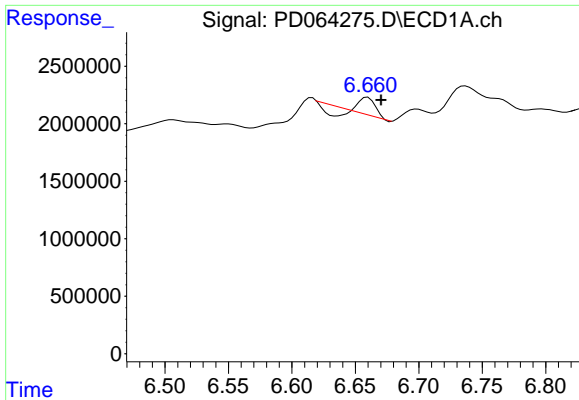
#21 Endrin ketone  
 R.T.: 0.000 min  
 Exp R.T. : 7.209 min  
 Response: 0  
 Conc: N.D.



#22 Toxaphene-1  
 R.T.: 6.506 min  
 Delta R.T.: 0.031 min  
 Response: 1707940  
 Conc: 235.57 ng/ml

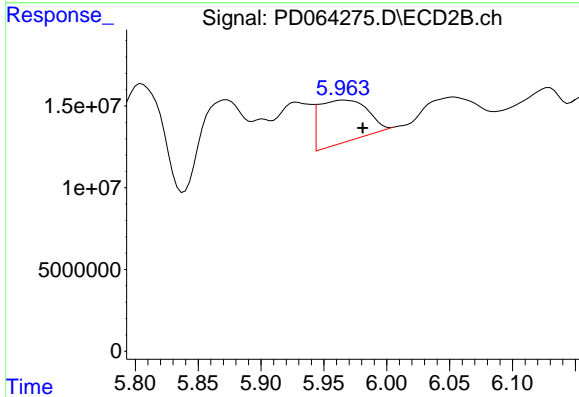


#22 Toxaphene-1  
 R.T.: 5.805 min  
 Delta R.T.: 0.040 min  
 Response: 76868004  
 Conc: 1450.23 ng/ml

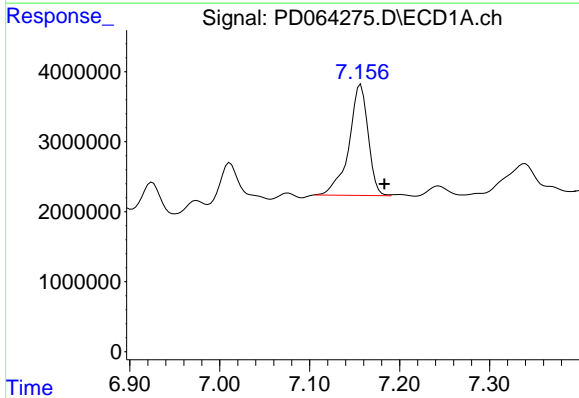


#23 Toxaphene-2  
 R.T.: 6.660 min  
 Delta R.T.: -0.011 min  
 Response: 612509  
 Conc: 52.37 ng/ml

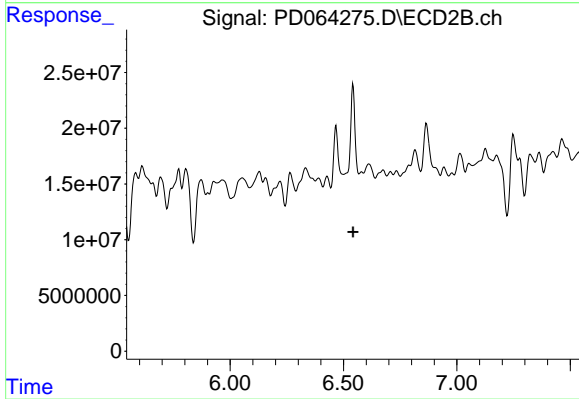
Instrument :  
 ECD\_D  
 ClientSampleId :



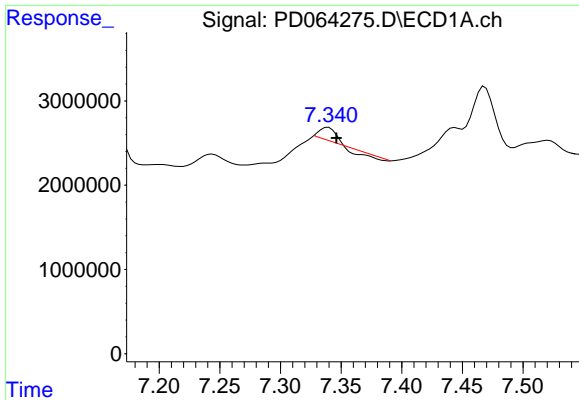
#23 Toxaphene-2  
 R.T.: 5.966 min  
 Delta R.T.: -0.015 min  
 Response: 68985908  
 Conc: 742.27 ng/ml



#24 Toxaphene-3  
 R.T.: 7.157 min  
 Delta R.T.: -0.026 min  
 Response: 23504323  
 Conc: 2102.87 ng/ml

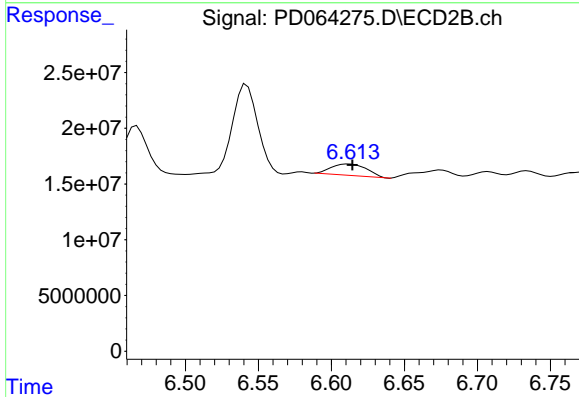


#24 Toxaphene-3  
 R.T.: 6.542 min  
 Delta R.T.: 0.000 min  
 Response: -49190531  
 Conc: N.D.

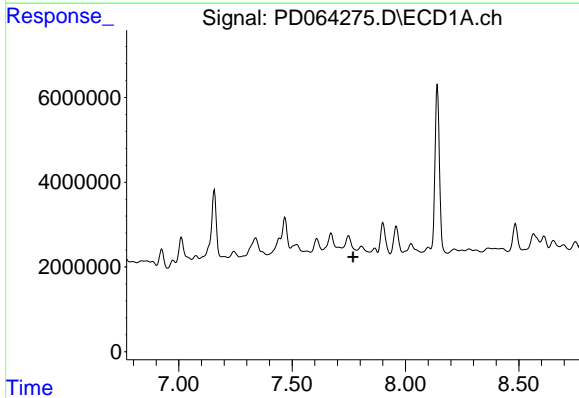


#25 Toxaphene-4  
 R.T.: 7.339 min  
 Delta R.T.: -0.007 min  
 Response: 820939  
 Conc: 36.80 ng/ml

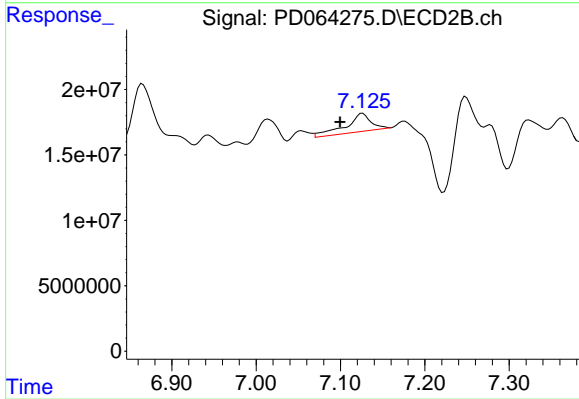
Instrument :  
 ECD\_D  
 ClientSampleId :



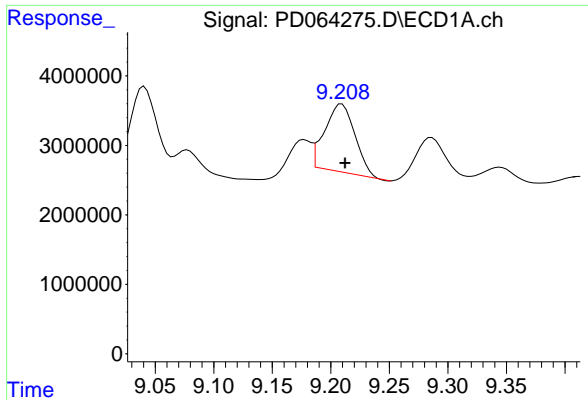
#25 Toxaphene-4  
 R.T.: 6.612 min  
 Delta R.T.: -0.002 min  
 Response: 17451225  
 Conc: 135.85 ng/ml



#26 Toxaphene-5  
 R.T.: 7.806 min  
 Delta R.T.: 0.037 min  
 Response: -1937044  
 Conc: N.D.



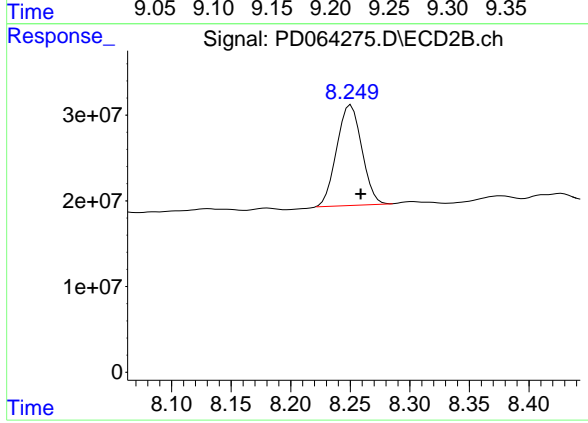
#26 Toxaphene-5  
 R.T.: 7.126 min  
 Delta R.T.: 0.027 min  
 Response: 28815694  
 Conc: 231.54 ng/ml



#27 Decachlorobiphenyl

R.T.: 9.209 min  
Delta R.T.: -0.003 min  
Response: 17482411  
Conc: 16.30 ng/ml

Instrument :  
ECD\_D  
ClientSampleId :



#27 Decachlorobiphenyl

R.T.: 8.251 min  
Delta R.T.: -0.008 min  
Response: 172124135  
Conc: 32.95 ng/ml