

Data Path : Z:\pestpcbsrv\HPCHEM1\ECD_D\Data\PD071522\
 Data File : PD070912.D
 Signal(s) : Signal #1: ECD1A.ch Signal #2: ECD2B.ch
 Acq On : 14 Jul 2022 10:54
 Operator : AR\AJ
 Sample : N3670-01
 Misc : TOX MDL 100 PPB
 ALS Vial : 6 Sample Multiplier: 1

Instrument :
 ECD_D
 ClientSampleId :

Integration File signal 1: autoint1.e
 Integration File signal 2: autoint2.e
 Quant Time: Jul 15 04:15:39 2022
 Quant Method : Z:\pestpcbsrv\HPCHEM1\ECD_D\Method\PD071422CLP.M
 Quant Title : GC Extractables
 QLast Update : Thu Jul 14 05:14:58 2022
 Response via : Initial Calibration
 Integrator: ChemStation

Volume Inj. : 1 µl
 Signal #1 Phase : ZB-MR2 Signal #2 Phase: ZB-MR1
 Signal #1 Info : 30M x 0.32mm x0.2 Signal #2 Info : 30M x 0.32mm x 0.50µm

	Compound	RT#1	RT#2	Resp#1	Resp#2	ng/ml	ng/ml

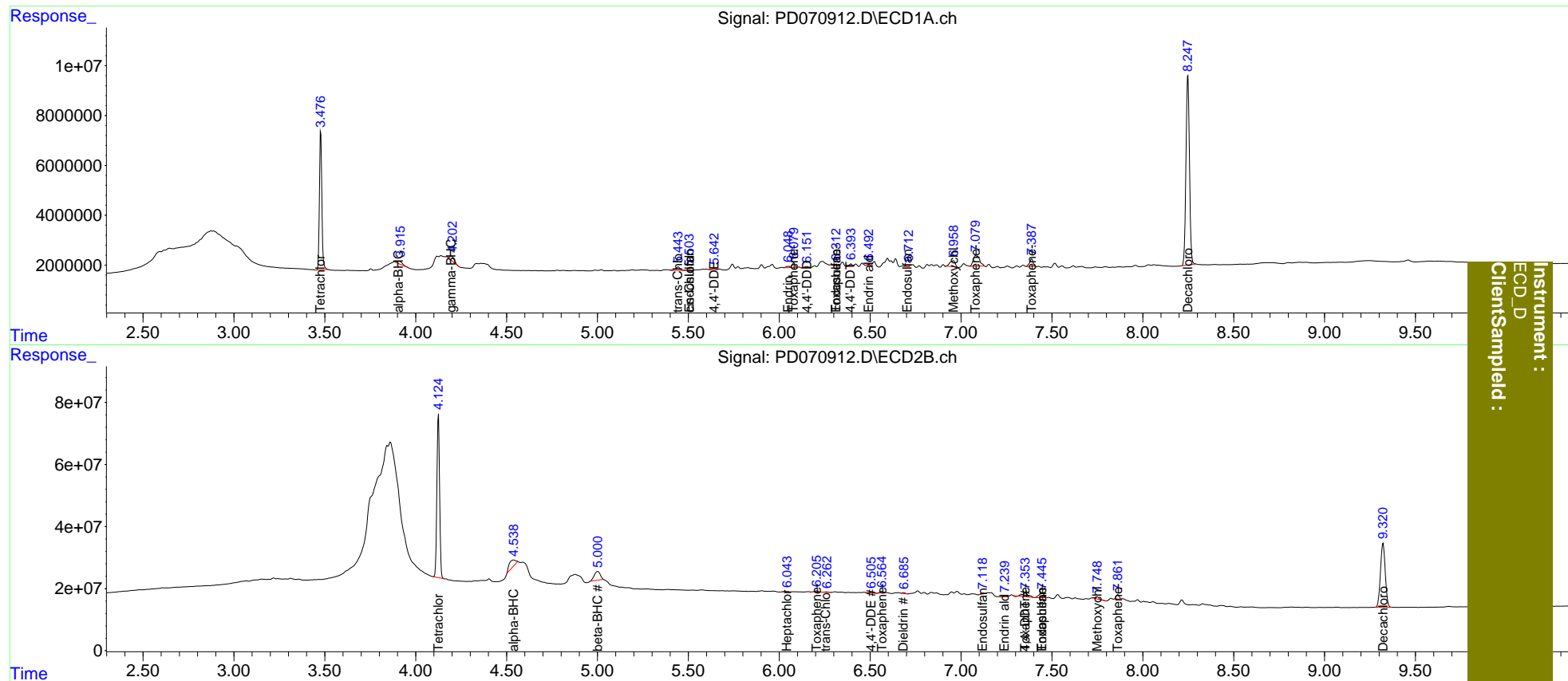
System Monitoring Compounds							
1)	SA Tetrachlo...	3.478	4.125	51934457	543.0E6	21.584	23.138
2)	SA Decachlor...	8.248	9.322	101.5E6	377.3E6	39.991	40.856
Target Compounds							
2)	A alpha-BHC	3.908	4.540	2101825	60045928	0.560	1.989 #
3)	MA gamma-BHC...	4.197	0.000	2506447	0	0.689	N.D. #
6)	B beta-BHC	0.000	5.002	0	65600198	N.D.	4.905
8)	B Heptachlo...	5.193	6.044	214835	2924078	<MDL	0.197 #
9)	A Endosulfan I	5.505	6.410	370627	308330	0.123	<MDL #
10)	B trans-Chl...	5.444	6.261	2656753	1714411	0.763	0.114 #
11)	B cis-Chlor...	5.505	6.340	370627	1116109	0.108	<MDL #
12)	B 4,4'-DDE	5.644	6.506	502101	1621178	0.156	0.118
13)	MA Dieldrin	5.774	6.685	-573337	2735056	N.D.	0.198
14)	MA Endrin	6.051	6.918	757235	216568	0.273	<MDL #
15)	B Endosulfa...	6.311	7.120	715700	3119149	0.261	0.271
16)	A 4,4'-DDD	6.152	7.017	403860	-831914	0.155	N.D. #
17)	MA 4,4'-DDT	6.395	7.354f	1123183	27868153	0.420	2.490 #
18)	B Endrin al...	6.493	7.240	284180	1851606	0.124	0.190 #
19)	B Endosulfa...	6.707	7.446	763856	28834886	0.273	2.543 #
20)	A Methoxychlor	6.959	7.750	4892312	10754484	3.538	2.056 #
22)	Toxaphene-1	5.774f	6.206	-573337	5694959	N.D.	135.260
23)	Toxaphene-2	6.081	6.565	2033055	6536309	132.351	68.757 #
24)	Toxaphene-3	6.311	7.354	715700	27868153	42.845	105.388 #
25)	Toxaphene-4	7.080	7.446	10381185	28834886	147.998	136.344
26)	Toxaphene-5	7.389	7.863	3813155	16857536	104.550	137.001 #

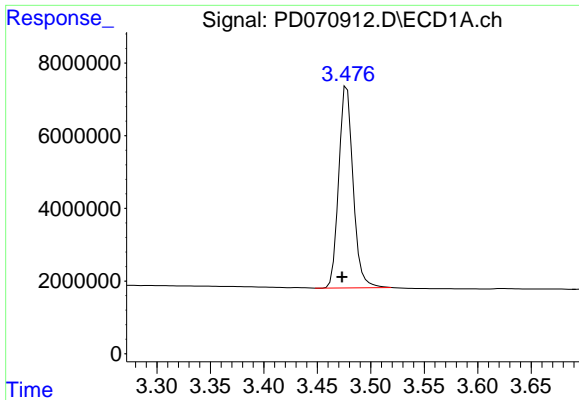
(f)=RT Delta > 1/2 Window (#)=Amounts differ by > 25% (m)=manual int.

Data Path : Z:\pestpcbsrv\HPCHEM1\ECD_D\Data\PD071522\
 Data File : PD070912.D
 Signal(s) : Signal #1: ECD1A.ch Signal #2: ECD2B.ch
 Acq On : 14 Jul 2022 10:54
 Operator : AR\AJ
 Sample : N3670-01
 Misc : TOX MDL 100 PPB
 ALS Vial : 6 Sample Multiplier: 1

Integration File signal 1: autoint1.e
 Integration File signal 2: autoint2.e
 Quant Time: Jul 15 04:15:39 2022
 Quant Method : Z:\pestpcbsrv\HPCHEM1\ECD_D\Method\PD071422CLP.M
 Quant Title : GC Extractables
 QLast Update : Thu Jul 14 05:14:58 2022
 Response via : Initial Calibration
 Integrator: ChemStation

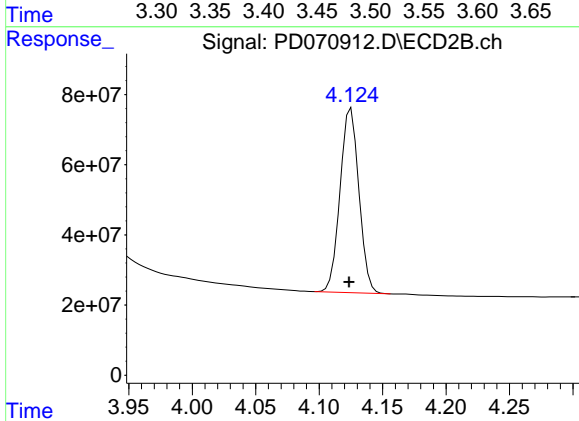
Volume Inj. : 1 µl
 Signal #1 Phase : ZB-MR2 Signal #2 Phase: ZB-MR1
 Signal #1 Info : 30M x 0.32mm x0.2 Signal #2 Info : 30M x 0.32mm x 0.50µm



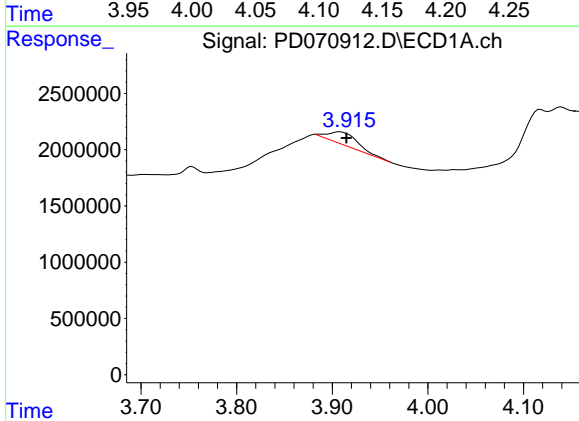


#1 Tetrachloro-m-xylene
 R.T.: 3.478 min
 Delta R.T.: 0.005 min
 Response: 51934457
 Conc: 21.58 ng/ml

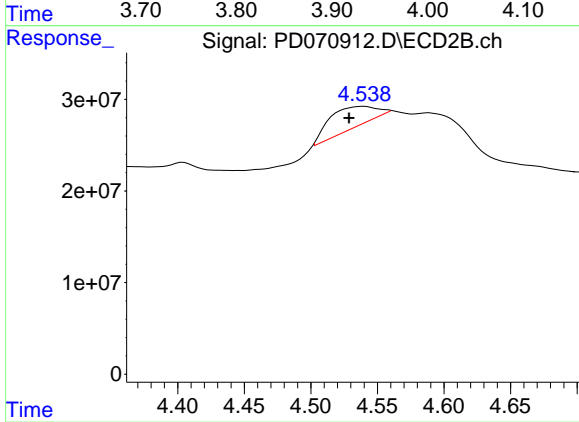
Instrument :
 ECD_D
 ClientSampleId :



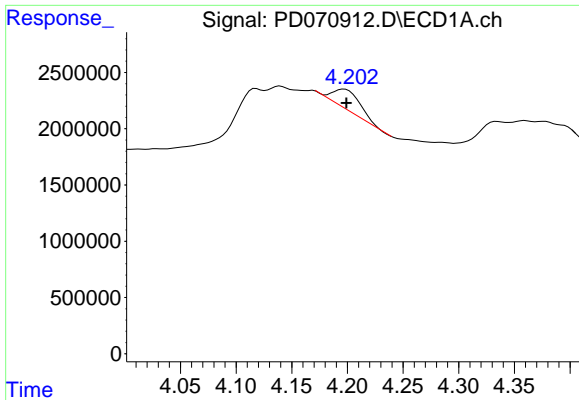
#1 Tetrachloro-m-xylene
 R.T.: 4.125 min
 Delta R.T.: 0.002 min
 Response: 543006704
 Conc: 23.14 ng/ml



#2 alpha-BHC
 R.T.: 3.908 min
 Delta R.T.: -0.007 min
 Response: 2101825
 Conc: 0.56 ng/ml

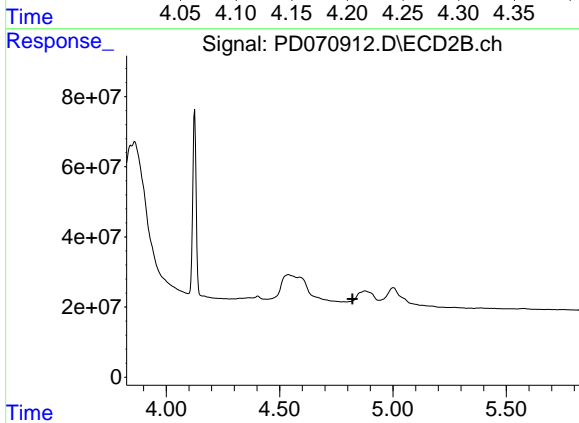


#2 alpha-BHC
 R.T.: 4.540 min
 Delta R.T.: 0.011 min
 Response: 60045928
 Conc: 1.99 ng/ml

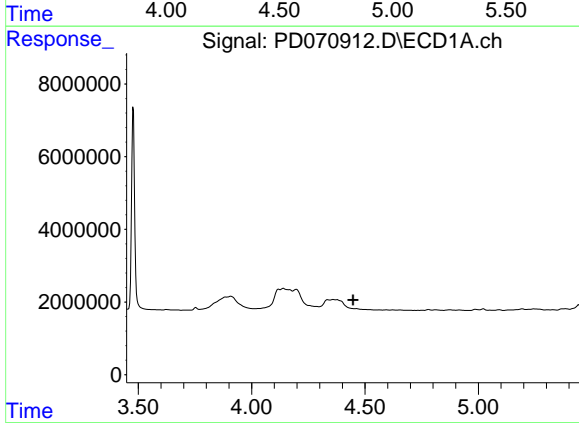


#3 gamma-BHC (Lindane)
 R.T.: 4.197 min
 Delta R.T.: -0.002 min
 Response: 2506447
 Conc: 0.69 ng/ml

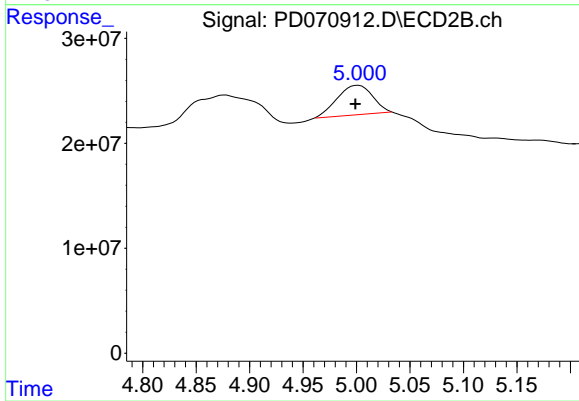
Instrument :
 ECD_D
 ClientSampleId :



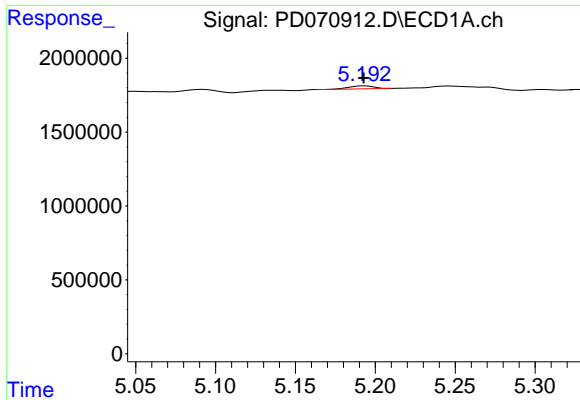
#3 gamma-BHC (Lindane)
 R.T.: 0.000 min
 Exp R.T. : 4.822 min
 Response: 0
 Conc: N.D.



#6 beta-BHC
 R.T.: 0.000 min
 Exp R.T. : 4.448 min
 Response: 0
 Conc: N.D.

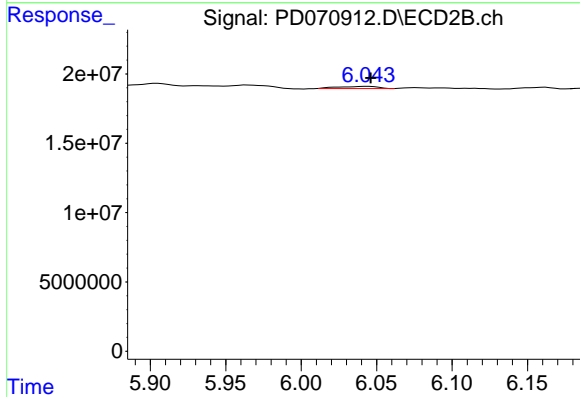


#6 beta-BHC
 R.T.: 5.002 min
 Delta R.T.: 0.003 min
 Response: 65600198
 Conc: 4.91 ng/ml

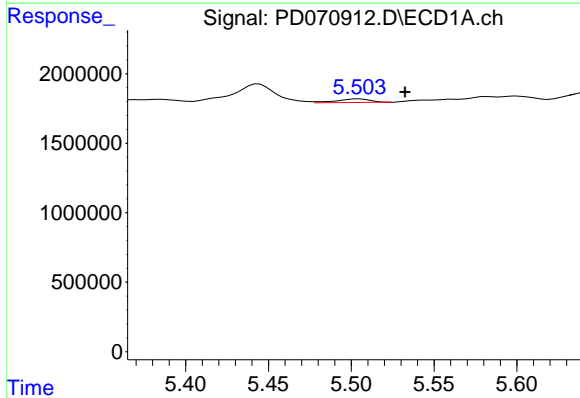


#8 Heptachlor epoxide
 R.T.: 5.193 min
 Delta R.T.: 0.000 min
 Response: 214835
 Conc: N.D.

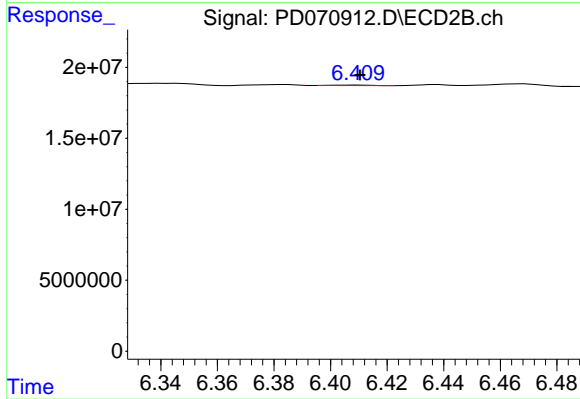
Instrument :
 ECD_D
 ClientSampleId :



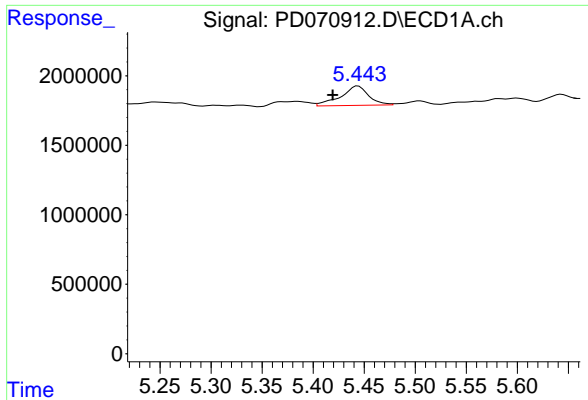
#8 Heptachlor epoxide
 R.T.: 6.044 min
 Delta R.T.: -0.002 min
 Response: 2924078
 Conc: 0.20 ng/ml



#9 Endosulfan I
 R.T.: 5.505 min
 Delta R.T.: -0.028 min
 Response: 370627
 Conc: 0.12 ng/ml



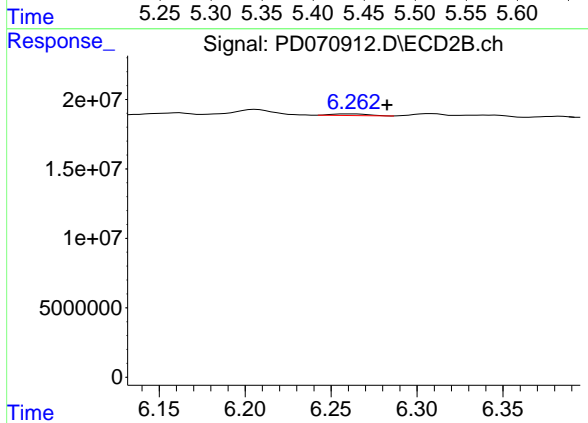
#9 Endosulfan I
 R.T.: 6.410 min
 Delta R.T.: 0.000 min
 Response: 308330
 Conc: N.D.



#10 trans-Chlordane

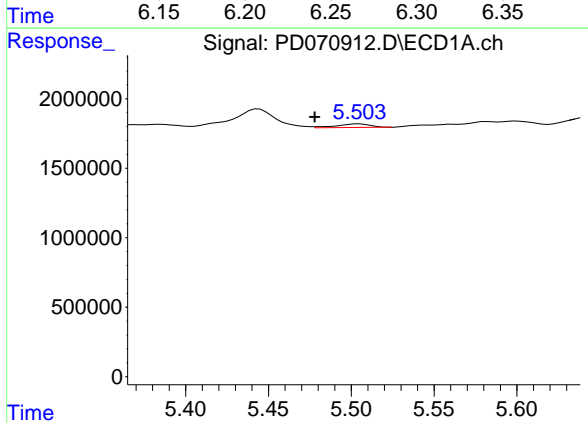
R.T.: 5.444 min
 Delta R.T.: 0.025 min
 Response: 2656753
 Conc: 0.76 ng/ml

Instrument :
 ECD_D
 ClientSampleId :



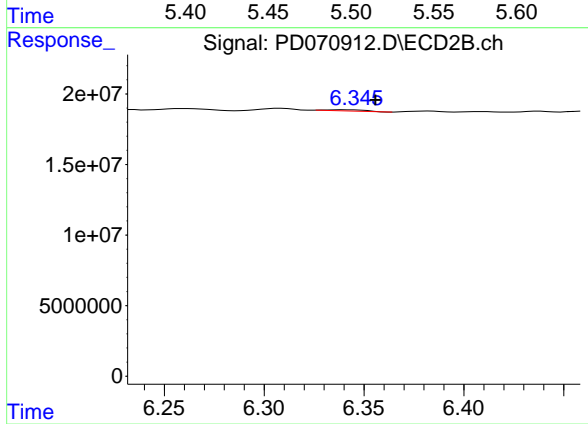
#10 trans-Chlordane

R.T.: 6.261 min
 Delta R.T.: -0.022 min
 Response: 1714411
 Conc: 0.11 ng/ml



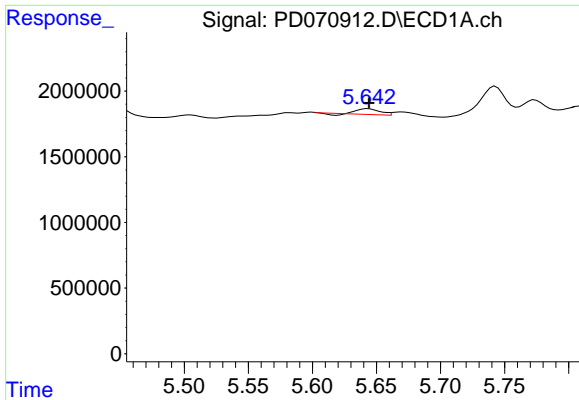
#11 cis-Chlordane

R.T.: 5.505 min
 Delta R.T.: 0.027 min
 Response: 370627
 Conc: 0.11 ng/ml



#11 cis-Chlordane

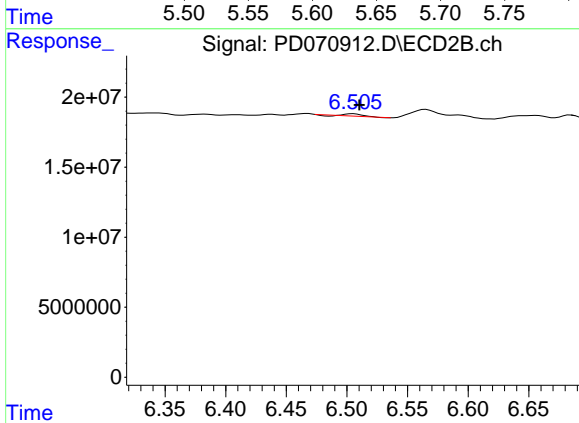
R.T.: 6.340 min
 Delta R.T.: -0.016 min
 Response: 1116109
 Conc: N.D.



#12 4,4'-DDE

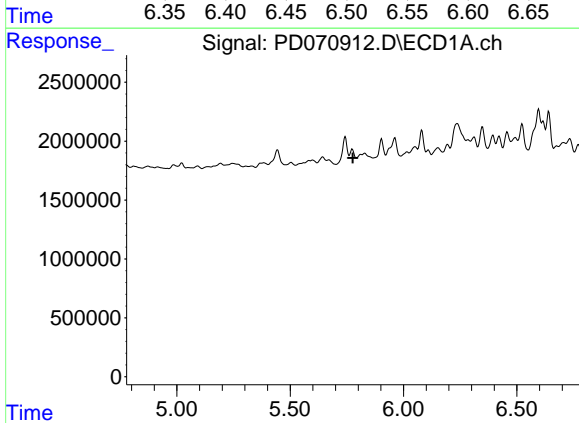
R.T.: 5.644 min
 Delta R.T.: 0.000 min
 Response: 502101
 Conc: 0.16 ng/ml

Instrument :
 ECD_D
 ClientSampleId :



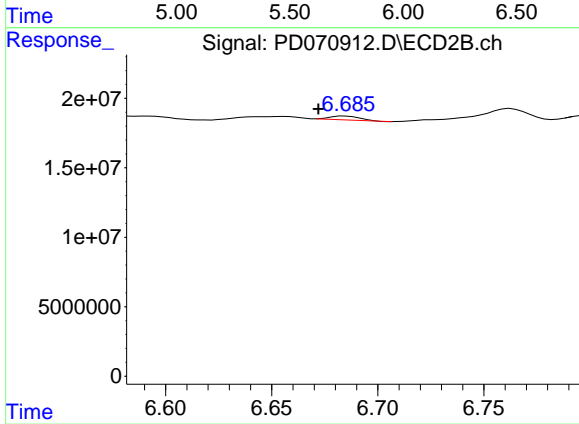
#12 4,4'-DDE

R.T.: 6.506 min
 Delta R.T.: -0.005 min
 Response: 1621178
 Conc: 0.12 ng/ml



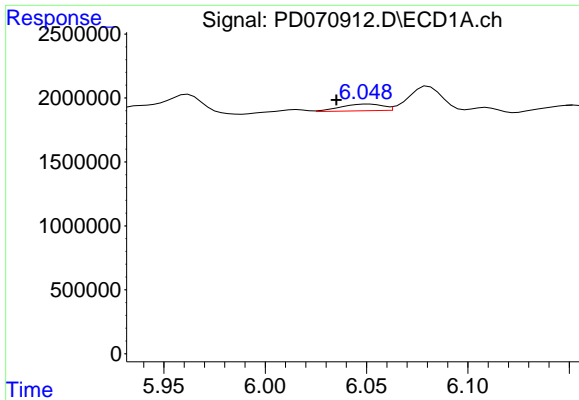
#13 Dieldrin

R.T.: 5.774 min
 Delta R.T.: -0.003 min
 Response: -573337
 Conc: N.D.



#13 Dieldrin

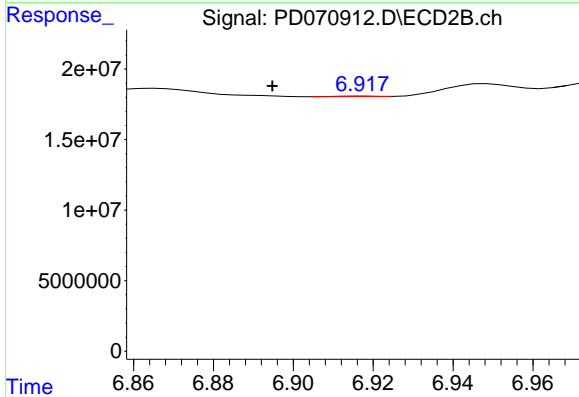
R.T.: 6.685 min
 Delta R.T.: 0.013 min
 Response: 2735056
 Conc: 0.20 ng/ml



#14 Endrin

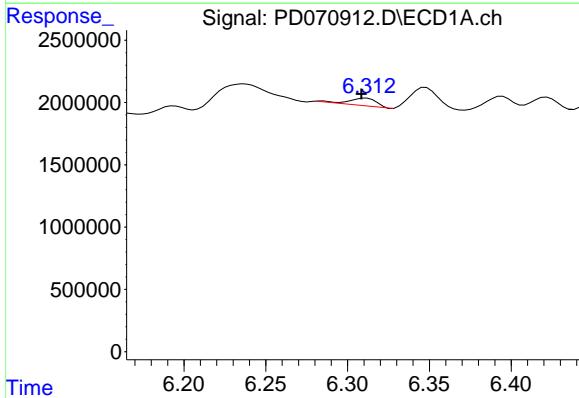
R.T.: 6.051 min
 Delta R.T.: 0.016 min
 Response: 757235
 Conc: 0.27 ng/ml

Instrument :
 ECD_D
 ClientSampleId :



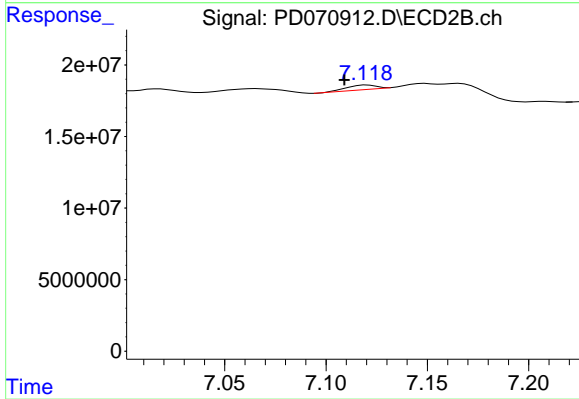
#14 Endrin

R.T.: 6.918 min
 Delta R.T.: 0.023 min
 Response: 216568
 Conc: N.D.



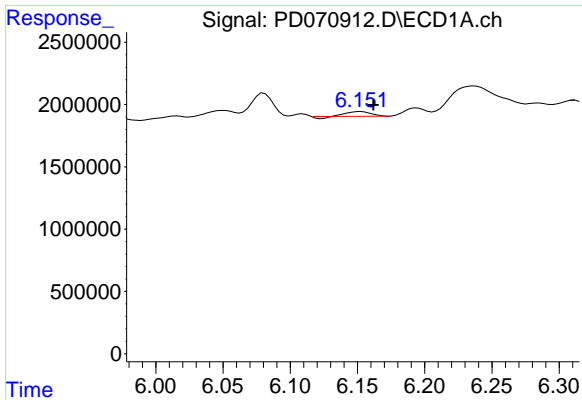
#15 Endosulfan II

R.T.: 6.311 min
 Delta R.T.: 0.003 min
 Response: 715700
 Conc: 0.26 ng/ml



#15 Endosulfan II

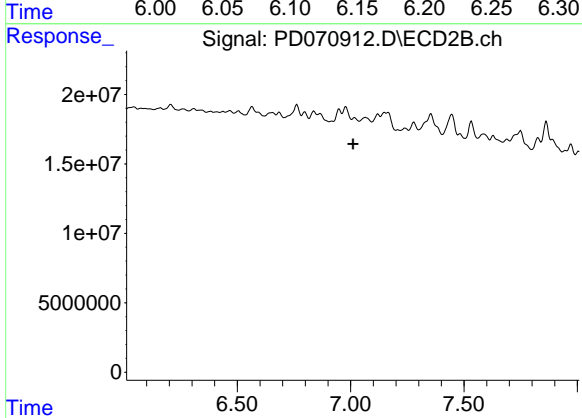
R.T.: 7.120 min
 Delta R.T.: 0.011 min
 Response: 3119149
 Conc: 0.27 ng/ml



#16 4,4'-DDD

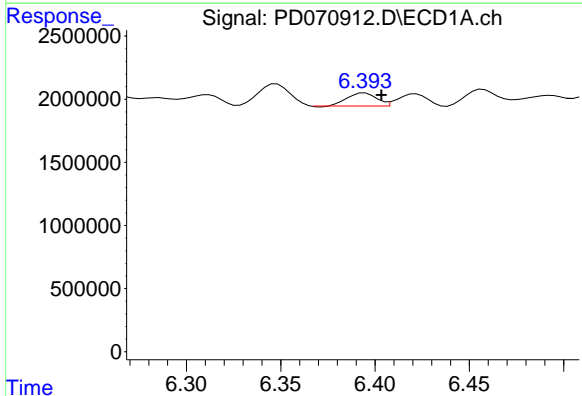
R.T.: 6.152 min
 Delta R.T.: -0.009 min
 Response: 403860
 Conc: 0.16 ng/ml

Instrument :
 ECD_D
 ClientSampleId :



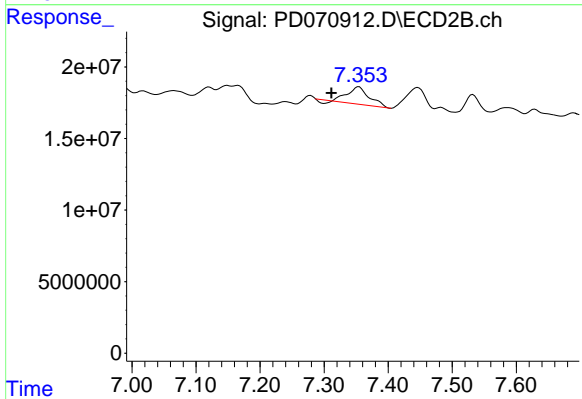
#16 4,4'-DDD

R.T.: 7.017 min
 Delta R.T.: 0.007 min
 Response: -831914
 Conc: N.D.



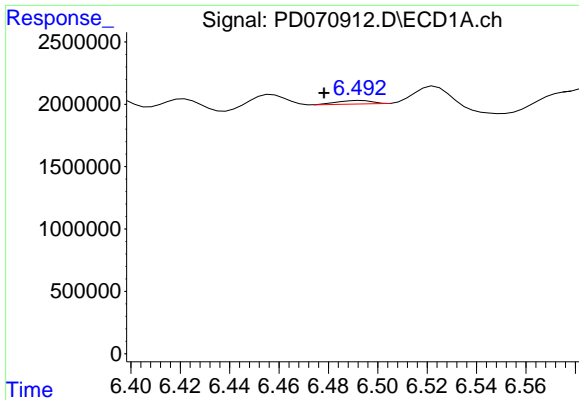
#17 4,4'-DDT

R.T.: 6.395 min
 Delta R.T.: -0.009 min
 Response: 1123183
 Conc: 0.42 ng/ml



#17 4,4'-DDT

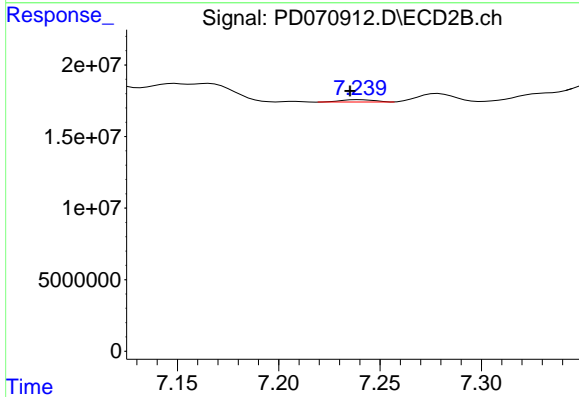
R.T.: 7.354 min
 Delta R.T.: 0.043 min
 Response: 27868153
 Conc: 2.49 ng/ml



#18 Endrin aldehyde

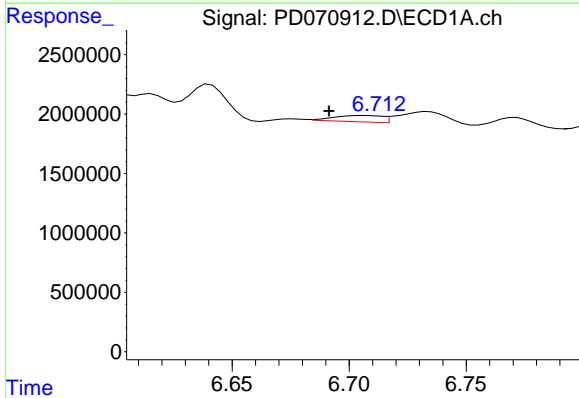
R.T.: 6.493 min
 Delta R.T.: 0.015 min
 Response: 284180
 Conc: 0.12 ng/ml

Instrument :
 ECD_D
 ClientSampleId :



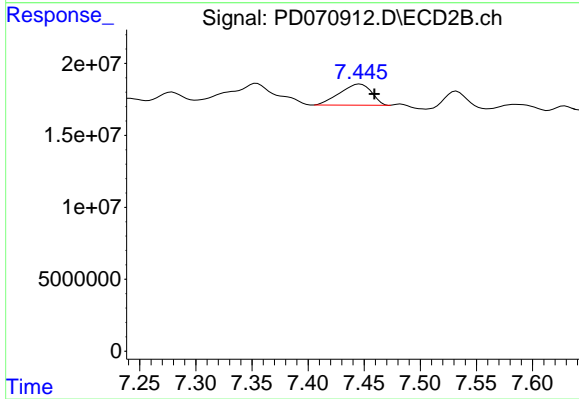
#18 Endrin aldehyde

R.T.: 7.240 min
 Delta R.T.: 0.005 min
 Response: 1851606
 Conc: 0.19 ng/ml



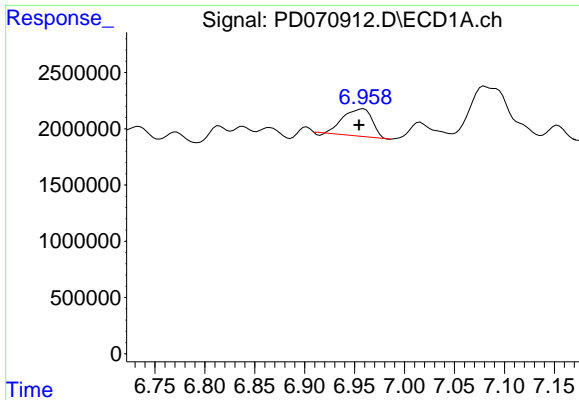
#19 Endosulfan Sulfate

R.T.: 6.707 min
 Delta R.T.: 0.015 min
 Response: 763856
 Conc: 0.27 ng/ml



#19 Endosulfan Sulfate

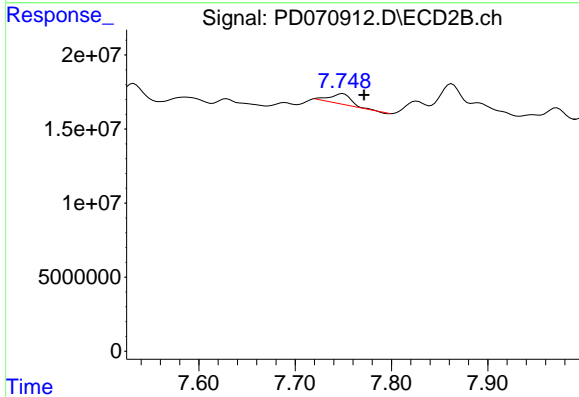
R.T.: 7.446 min
 Delta R.T.: -0.013 min
 Response: 28834886
 Conc: 2.54 ng/ml



#20 Methoxychlor

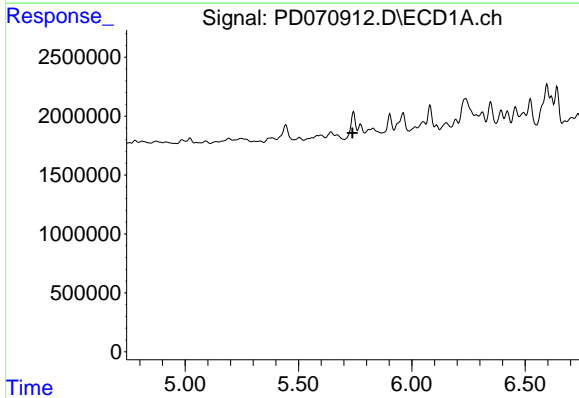
R.T.: 6.959 min
 Delta R.T.: 0.005 min
 Response: 4892312
 Conc: 3.54 ng/ml

Instrument :
 ECD_D
 ClientSampleId :



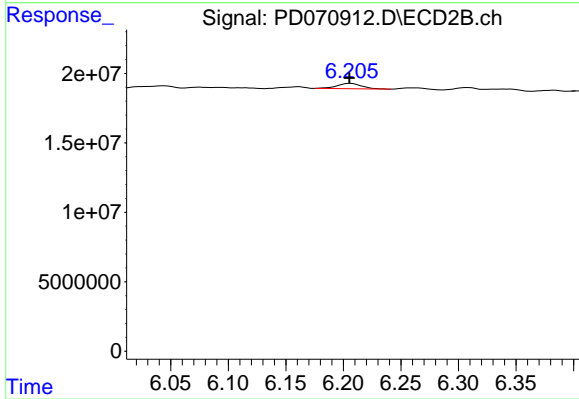
#20 Methoxychlor

R.T.: 7.750 min
 Delta R.T.: -0.022 min
 Response: 10754484
 Conc: 2.06 ng/ml



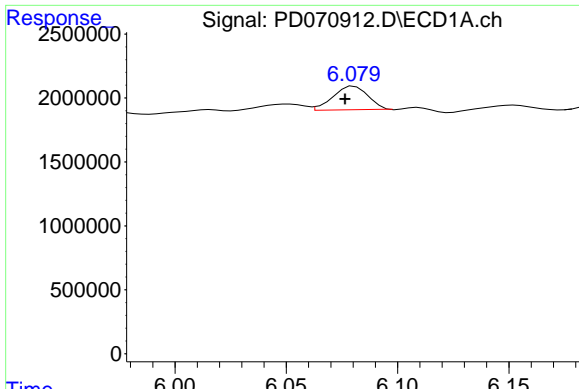
#22 Toxaphene-1

R.T.: 5.774 min
 Delta R.T.: 0.035 min
 Response: -573337
 Conc: N.D.



#22 Toxaphene-1

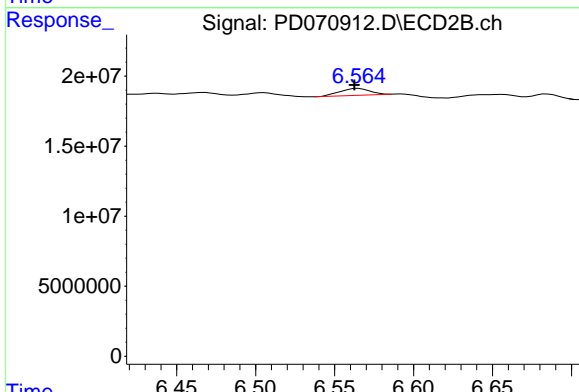
R.T.: 6.206 min
 Delta R.T.: 0.000 min
 Response: 5694959
 Conc: 135.26 ng/ml



#23 Toxaphene-2

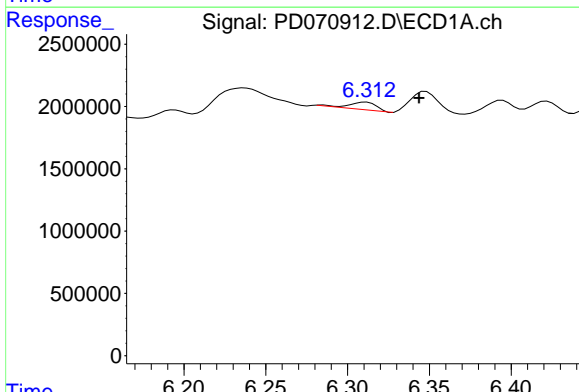
R.T.: 6.081 min
 Delta R.T.: 0.004 min
 Response: 2033055
 Conc: 132.35 ng/ml

Instrument :
 ECD_D
 ClientSampleId :



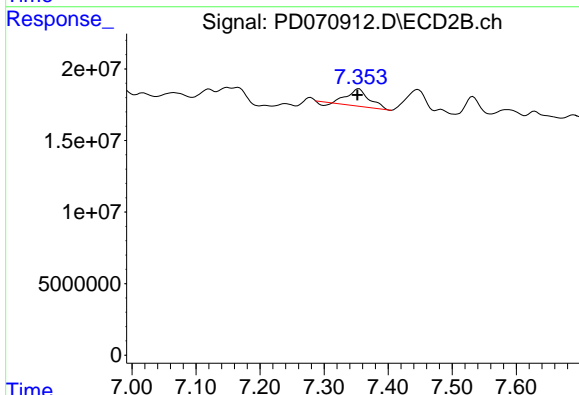
#23 Toxaphene-2

R.T.: 6.565 min
 Delta R.T.: 0.002 min
 Response: 6536309
 Conc: 68.76 ng/ml



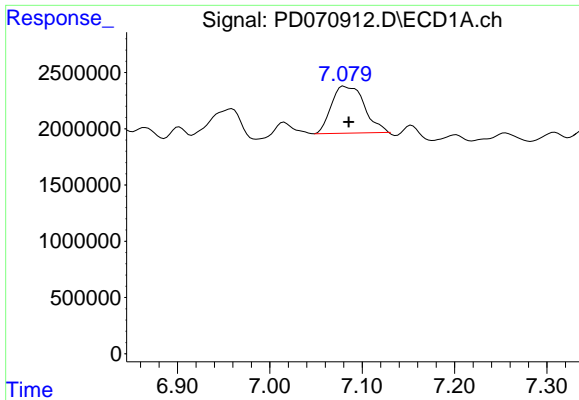
#24 Toxaphene-3

R.T.: 6.311 min
 Delta R.T.: -0.032 min
 Response: 715700
 Conc: 42.85 ng/ml



#24 Toxaphene-3

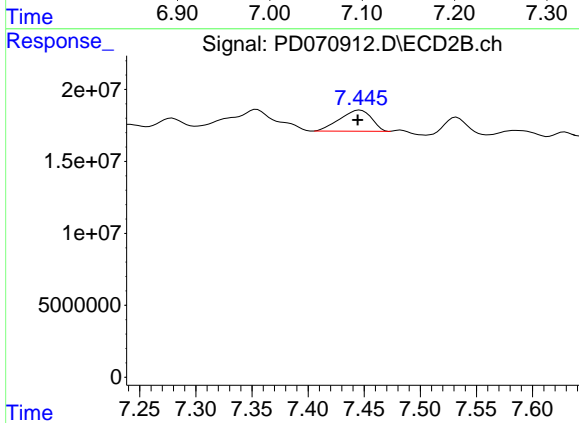
R.T.: 7.354 min
 Delta R.T.: 0.002 min
 Response: 27868153
 Conc: 105.39 ng/ml



#25 Toxaphene-4

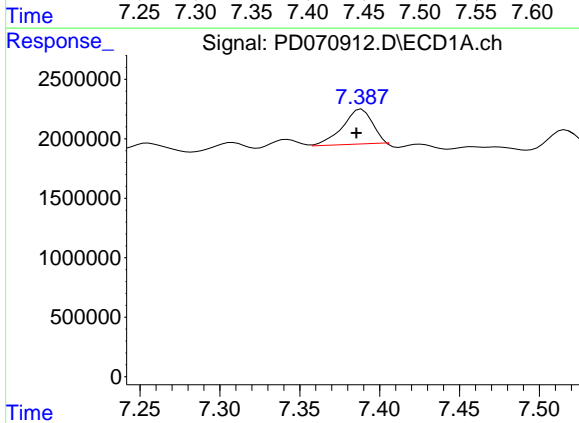
R.T.: 7.080 min
 Delta R.T.: -0.005 min
 Response: 10381185
 Conc: 148.00 ng/ml

Instrument :
 ECD_D
 ClientSampleId :



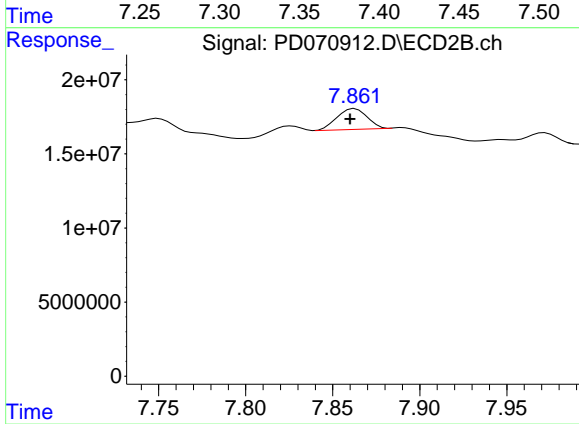
#25 Toxaphene-4

R.T.: 7.446 min
 Delta R.T.: 0.002 min
 Response: 28834886
 Conc: 136.34 ng/ml



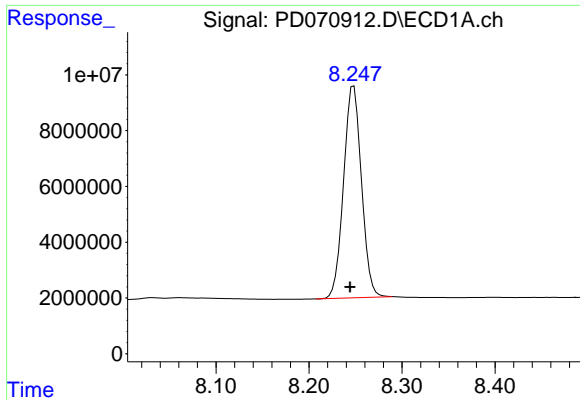
#26 Toxaphene-5

R.T.: 7.389 min
 Delta R.T.: 0.003 min
 Response: 3813155
 Conc: 104.55 ng/ml



#26 Toxaphene-5

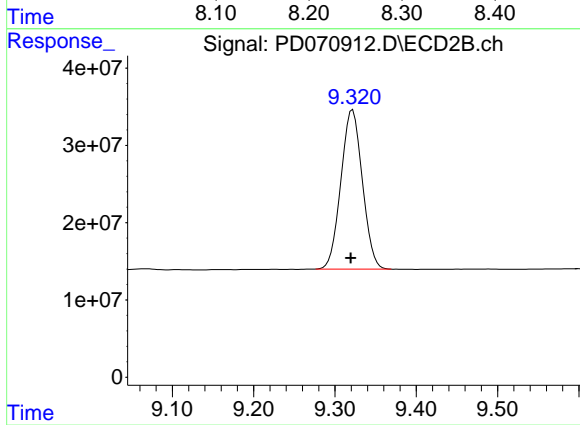
R.T.: 7.863 min
 Delta R.T.: 0.003 min
 Response: 16857536
 Conc: 137.00 ng/ml



#27 Decachlorobiphenyl

R.T.: 8.248 min
Delta R.T.: 0.004 min
Response: 101531073
Conc: 39.99 ng/ml

Instrument :
ECD_D
ClientSampleId :



#27 Decachlorobiphenyl

R.T.: 9.322 min
Delta R.T.: 0.003 min
Response: 377331264
Conc: 40.86 ng/ml