

Data Path : Z:\pestpcbsrv\HPCHEM1\ECD\_D\Data\PD071524\  
 Data File : PD083948.D  
 Signal(s) : Signal #1: ECD1A.ch Signal #2: ECD2B.ch  
 Acq On : 15 Jul 2024 15:21  
 Operator : AR\AJ  
 Sample : PTOXICV500  
 Misc :  
 ALS Vial : 22 Sample Multiplier: 1

Instrument :  
 ECD\_D  
 ClientSampleId :  
 ICVPD071524

Integration File signal 1: autoint1.e  
 Integration File signal 2: autoint2.e  
 Quant Time: Jul 16 04:43:14 2024  
 Quant Method : Z:\pestpcbsrv\HPCHEM1\ECD\_D\Method\DTX071524.M  
 Quant Title : GC Extractables  
 QLast Update : Tue Jul 16 04:40:41 2024  
 Response via : Initial Calibration  
 Integrator: ChemStation

Volume Inj. : 1 µl  
 Signal #1 Phase : ZB-MR1 Signal #2 Phase: ZB-MR2  
 Signal #1 Info : 30M x 0.32mm x 0. Signal #2 Info : 30M x 0.32mm x 0.25µm

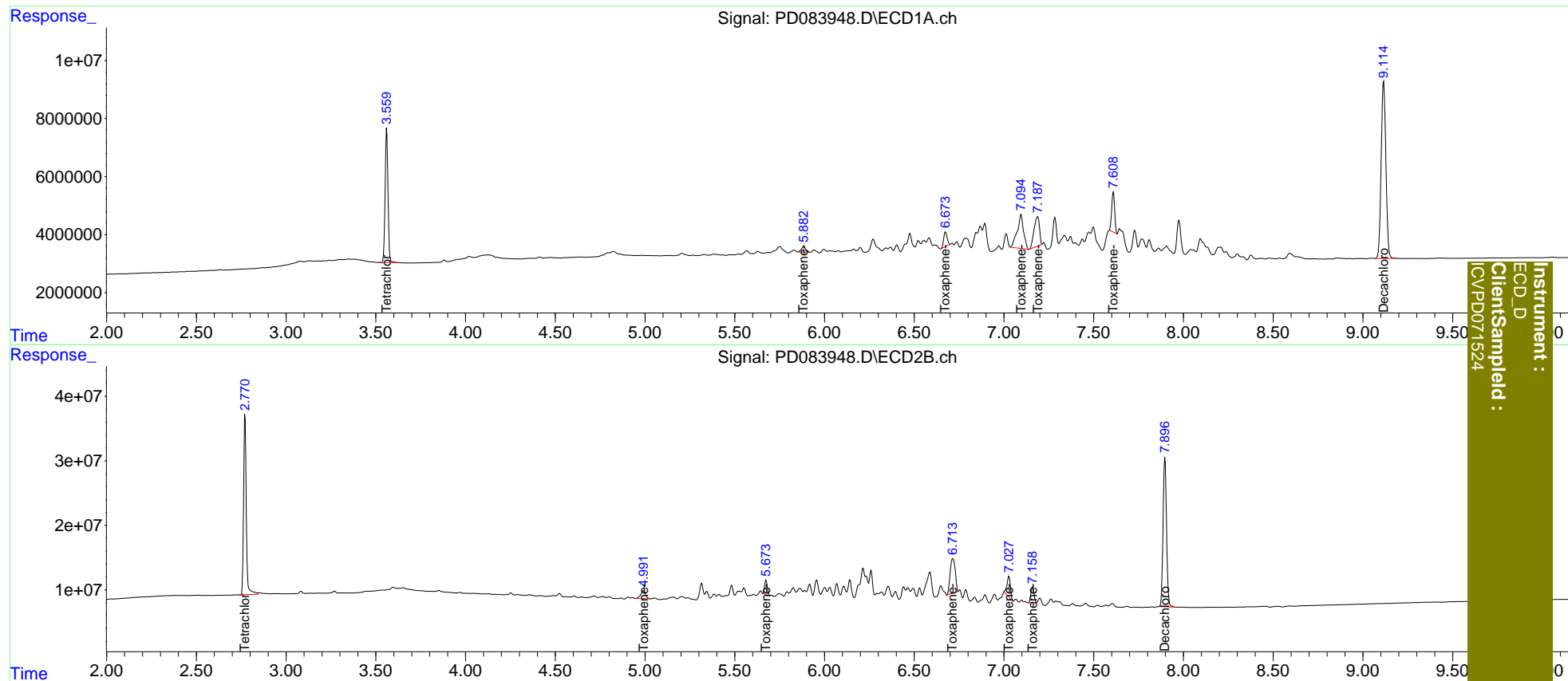
Compound	RT#1	RT#2	Resp#1	Resp#2	ng/ml	ng/ml
-----						
System Monitoring Compounds						
1) SA Tetrachlo...	3.561	2.771	51226640	289.5E6	49.826	49.309
7) SA Decachlor...	9.115	7.897	111.5E6	311.1E6	49.958	50.150
Target Compounds						
2) Toxaphene-1	5.884	4.992	3408590	22939707	501.512	502.108
3) Toxaphene-2	6.674	5.674	6707524	23433631	486.797	508.897
4) Toxaphene-3	7.095	6.715	28578052	104.3E6	496.389	493.967
5) Toxaphene-4	7.188	7.028	21114900	40760363	487.683	516.661
6) Toxaphene-5	7.610	7.159	15754187	29175769	529.306	495.945
-----						

(f)=RT Delta > 1/2 Window (#)=Amounts differ by > 25% (m)=manual int.

Data Path : Z:\pestpcbsrv\HPCHEM1\ECD\_D\Data\PD071524\  
 Data File : PD083948.D  
 Signal(s) : Signal #1: ECD1A.ch Signal #2: ECD2B.ch  
 Acq On : 15 Jul 2024 15:21  
 Operator : AR\AJ  
 Sample : PTOXICV500  
 Misc :  
 ALS Vial : 22 Sample Multiplier: 1

Integration File signal 1: autoint1.e  
 Integration File signal 2: autoint2.e  
 Quant Time: Jul 16 04:43:14 2024  
 Quant Method : Z:\pestpcbsrv\HPCHEM1\ECD\_D\Method\DTX071524.M  
 Quant Title : GC Extractables  
 QLast Update : Tue Jul 16 04:40:41 2024  
 Response via : Initial Calibration  
 Integrator: ChemStation

Volume Inj. : 1 µl  
 Signal #1 Phase : ZB-MR1 Signal #2 Phase: ZB-MR2  
 Signal #1 Info : 30M x 0.32mm x 0. Signal #2 Info : 30M x 0.32mm x0.25µm



Instrument :  
 ECD\_D  
 ClientSampled :  
 ICV/PD071524