

Data Path : Z:\pestpcbsrv\HPCHEM1\ECD\_D\Data\PD071620\  
 Data File : PD058617.D  
 Signal(s) : Signal #1: ECD1A.ch Signal #2: ECD2B.ch  
 Acq On : 16 Jul 2020 09:04  
 Operator : AJ\MA  
 Sample : HEXANE  
 Misc :  
 ALS Vial : 1 Sample Multiplier: 1

Instrument :  
 ECD\_D  
 ClientSampleId :

Integration File signal 1: autoint1.e  
 Integration File signal 2: autoint2.e  
 Quant Time: Jul 17 03:45:51 2020  
 Quant Method : Z:\pestpcbsrv\HPCHEM1\ECD\_D\Method\PD070720.M  
 Quant Title : GC Extractables  
 QLast Update : Wed Jul 08 08:01:25 2020  
 Response via : Initial Calibration  
 Integrator: ChemStation

Volume Inj. : 2 µl  
 Signal #1 Phase : ZB-MR2 Signal #2 Phase: ZB-MR1  
 Signal #1 Info : 30M x 0.32mm x0.2 Signal #2 Info : 30M x 0.32mm x 0.50µm

| Compound | RT#1 | RT#2 | Resp#1 | Resp#2 | ng/ml | ng/ml |
|----------|------|------|--------|--------|-------|-------|
|----------|------|------|--------|--------|-------|-------|

System Monitoring Compounds

Target Compounds

|                    |       |       |   |        |      |         |
|--------------------|-------|-------|---|--------|------|---------|
| 3) MA gamma-BHC... | 0.000 | 4.532 | 0 | 441024 | N.D. | 0.128 # |
|--------------------|-------|-------|---|--------|------|---------|

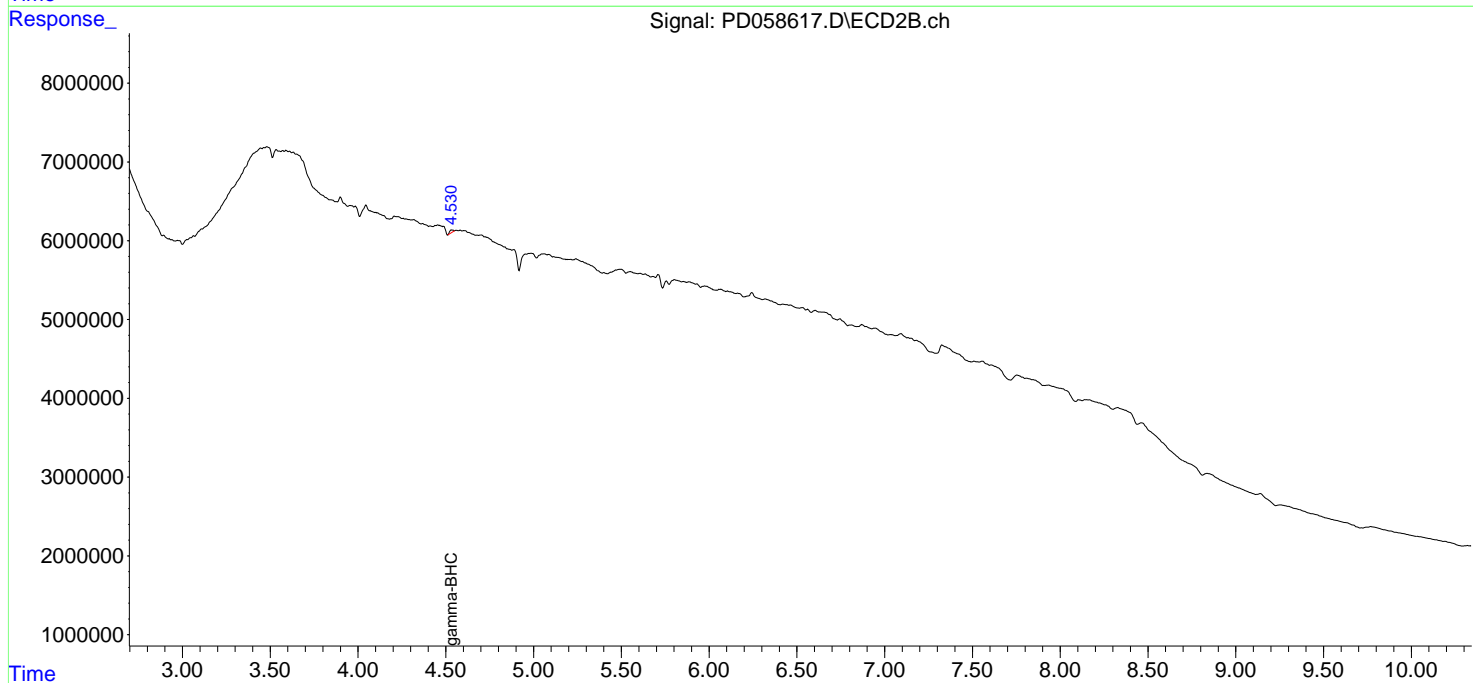
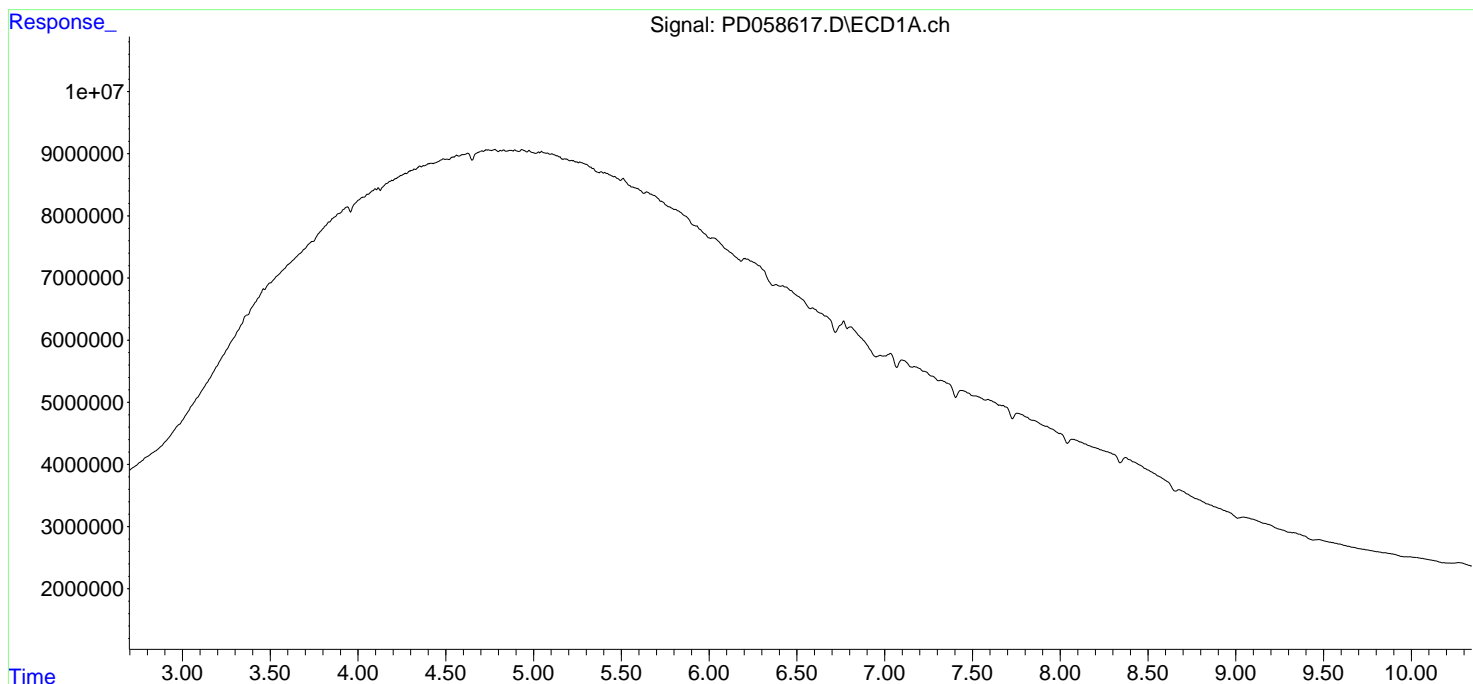
(f)=RT Delta > 1/2 Window (#)=Amounts differ by > 25% (m)=manual int.

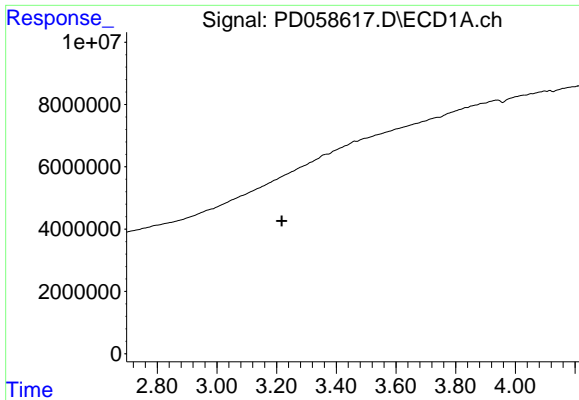
Data Path : Z:\pestpcbsrv\HPCHEM1\ECD\_D\Data\PD071620\  
 Data File : PD058617.D  
 Signal(s) : Signal #1: ECD1A.ch Signal #2: ECD2B.ch  
 Acq On : 16 Jul 2020 09:04  
 Operator : AJ\MA  
 Sample : HEXANE  
 Misc :  
 ALS Vial : 1 Sample Multiplier: 1

Instrument :  
 ECD\_D  
 ClientSampled :

Integration File signal 1: autoint1.e  
 Integration File signal 2: autoint2.e  
 Quant Time: Jul 17 03:45:51 2020  
 Quant Method : Z:\pestpcbsrv\HPCHEM1\ECD\_D\Method\PD070720.M  
 Quant Title : GC Extractables  
 QLast Update : Wed Jul 08 08:01:25 2020  
 Response via : Initial Calibration  
 Integrator: ChemStation

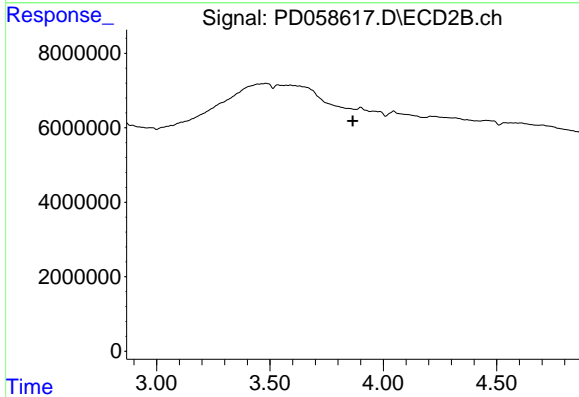
Volume Inj. : 2 µl  
 Signal #1 Phase : ZB-MR2 Signal #2 Phase: ZB-MR1  
 Signal #1 Info : 30M x 0.32mm x 0.2 Signal #2 Info : 30M x 0.32mm x 0.50µm



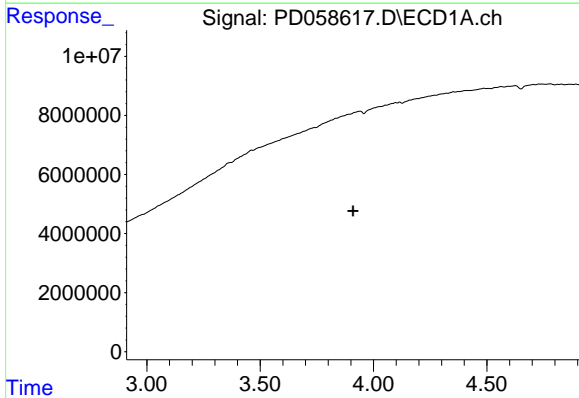


#1 Tetrachloro-m-xylene  
 R.T.: 0.000 min  
 Exp R.T. : 3.217 min  
 Response: 0  
 Conc: N.D.

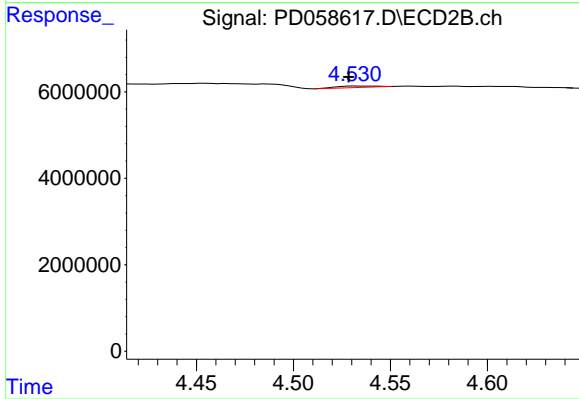
Instrument :  
 ECD\_D  
 ClientSampleId :



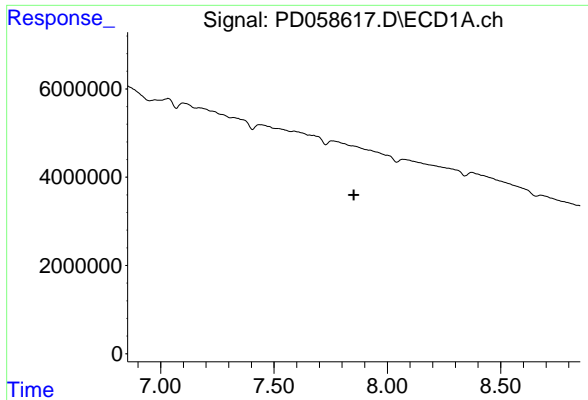
#1 Tetrachloro-m-xylene  
 R.T.: 0.000 min  
 Exp R.T. : 3.866 min  
 Response: 0  
 Conc: N.D.



#3 gamma-BHC (Lindane)  
 R.T.: 0.000 min  
 Exp R.T. : 3.910 min  
 Response: 0  
 Conc: N.D.



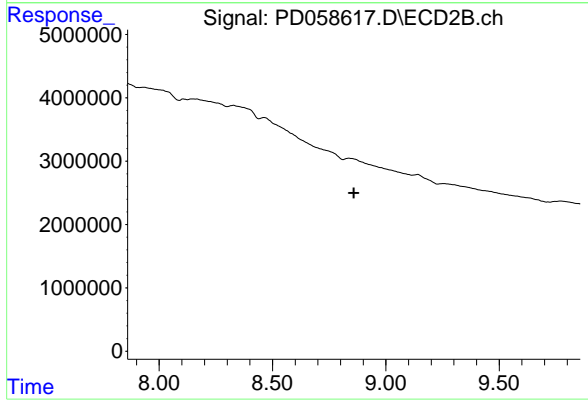
#3 gamma-BHC (Lindane)  
 R.T.: 4.532 min  
 Delta R.T.: 0.003 min  
 Response: 441024  
 Conc: 0.13 ng/ml



#28 Decachlorobiphenyl

R.T.: 0.000 min  
Exp R.T. : 7.852 min  
Response: 0  
Conc: N.D.

Instrument :  
ECD\_D  
ClientSampleId :



#28 Decachlorobiphenyl

R.T.: 0.000 min  
Exp R.T. : 8.859 min  
Response: 0  
Conc: N.D.