

Data Path : Z:\pestpcbsrv\HPCHEM1\ECD_D\Data\PD071620\
 Data File : PD058628.D
 Signal(s) : Signal #1: ECD1A.ch Signal #2: ECD2B.ch
 Acq On : 16 Jul 2020 12:04
 Operator : AJ\MA
 Sample : L3305-01
 Misc :
 ALS Vial : 12 Sample Multiplier: 1

Instrument :
 ECD_D
 ClientSampleId :
 FK-GF-02-057-A

Integration File signal 1: autoint1.e
 Integration File signal 2: autoint2.e
 Quant Time: Jul 17 03:48:36 2020
 Quant Method : Z:\pestpcbsrv\HPCHEM1\ECD_D\Method\PD070720.M
 Quant Title : GC Extractables
 QLast Update : Wed Jul 08 08:01:25 2020
 Response via : Initial Calibration
 Integrator: ChemStation

Volume Inj. : 2 µl
 Signal #1 Phase : ZB-MR2 Signal #2 Phase: ZB-MR1
 Signal #1 Info : 30M x 0.32mm x0.2 Signal #2 Info : 30M x 0.32mm x 0.50µm

Compound	RT#1	RT#2	Resp#1	Resp#2	ng/ml	ng/ml

System Monitoring Compounds						
1) SA Tetrachlo...	3.209	3.865	21863805	28485787	11.991	11.529
28) SA Decachlor...	7.844	8.858	19064605	24027068	10.557	11.020
Target Compounds						
2) A alpha-BHC	0.000	4.257	0	2503716	N.D.	0.664 #
3) MA gamma-BHC...	0.000	4.500f	0	1607249	N.D.	0.465 #
4) MA Heptachlor	4.181	5.028	16308513	17968832	8.994	5.708 #
5) MB Aldrin	4.416	5.327	38747007	49256148	16.266	15.533
6) B beta-BHC	4.181f	4.717f	16308513	-329853	15.917	N.D. #
7) B delta-BHC	0.000	4.938f	0	4131366	N.D.	1.343 #
8) B Heptachlo...	0.000	5.704	0	26074834	N.D.	8.957 #
10) B gamma-Chl...	5.068	5.944	58128640	97867567	26.109	33.631 #
11) B alpha-Chl...	5.124	6.018	71824274	148.4E6	32.437	51.616 #
12) B 4,4'-DDE	5.293	6.174	10199302	21465338	4.726	7.810 #
13) MA Dieldrin	5.414	6.315	10344494	1668412	5.801	0.584 #
14) MA Endrin	5.679	6.532	9350627	8442546	6.566	3.967 #
15) B Endosulfa...	5.940	0.000	25792551	0	14.294	N.D. #
16) A 4,4'-DDD	0.000	6.668	0	14570920	N.D.	6.320 #
17) MA 4,4'-DDT	6.032	6.959	19318041	9333488	13.107	4.067 #
18) B Endrin al...	0.000	6.869	0	1571594	N.D.	0.735 #
19) B Endosulfa...	0.000	7.087	0	2376193	N.D.	1.036 #
21) B Endrin ke...	0.000	7.527f	0	4000608	N.D.	1.470 #
23) Chlordane-1	4.037	4.841	22299783	32120008	382.154	360.895
24) Chlordane-2	4.521	5.307	24826977	23129572	384.077	234.138 #
25) Chlordane-3	5.068	5.944	58128640	97867567	283.979	263.123
26) Chlordane-4	5.124	6.018	71824274	148.4E6	376.381	341.256
27) Chlordane-5	5.940	6.814	25792551	39566273	419.718	496.572

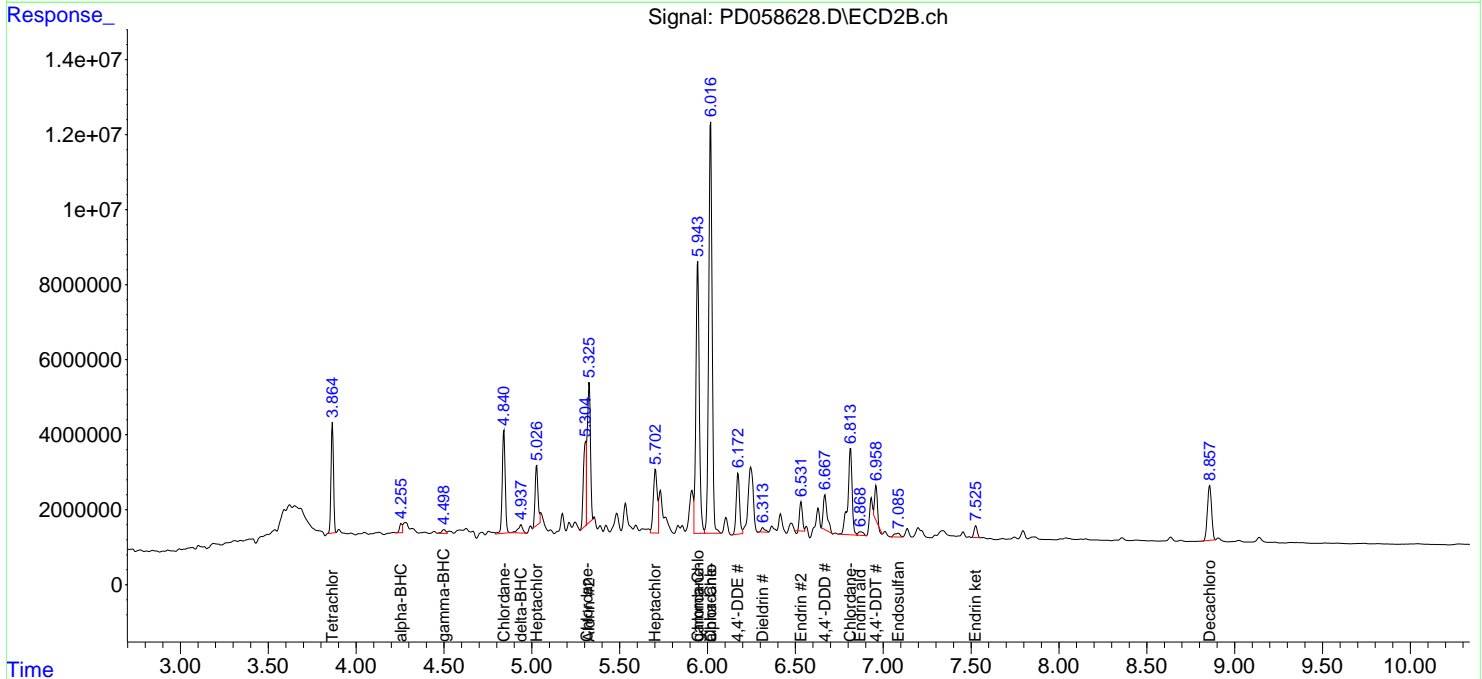
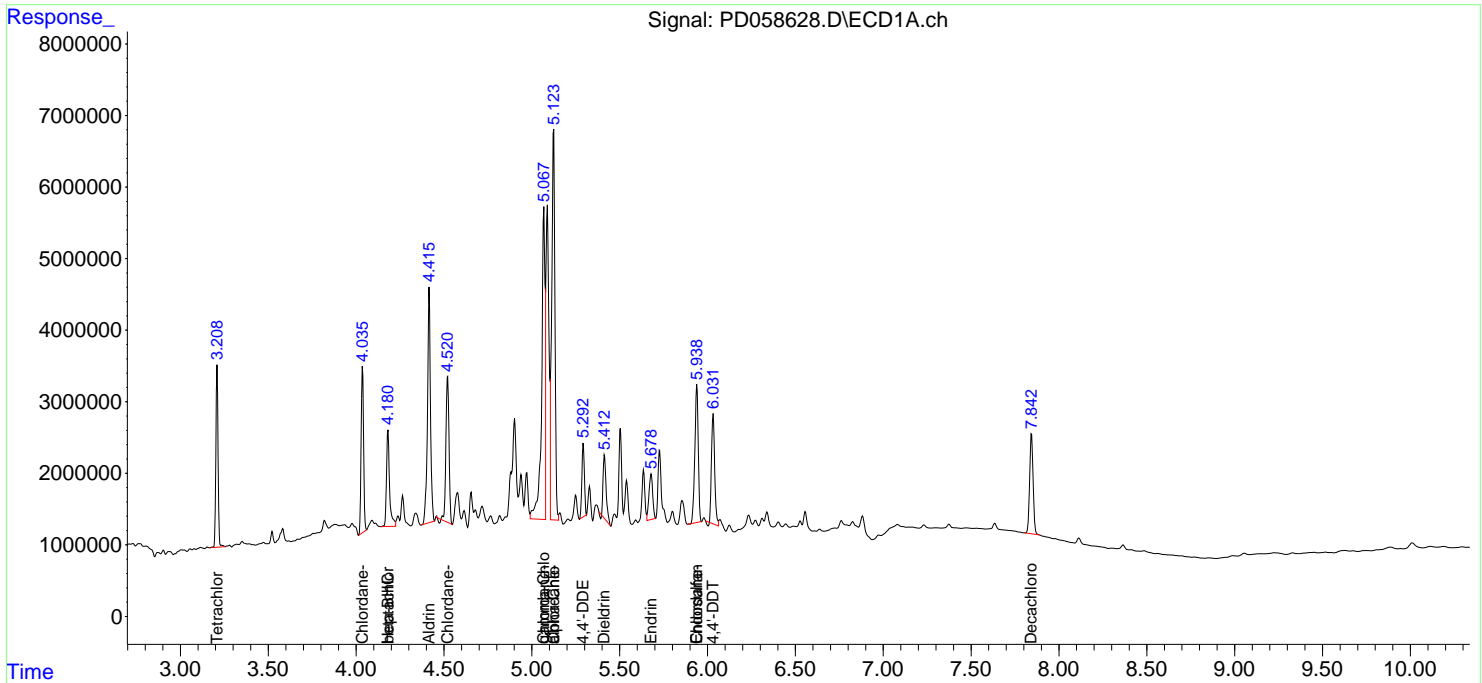
(f)=RT Delta > 1/2 Window (#)=Amounts differ by > 25% (m)=manual int.

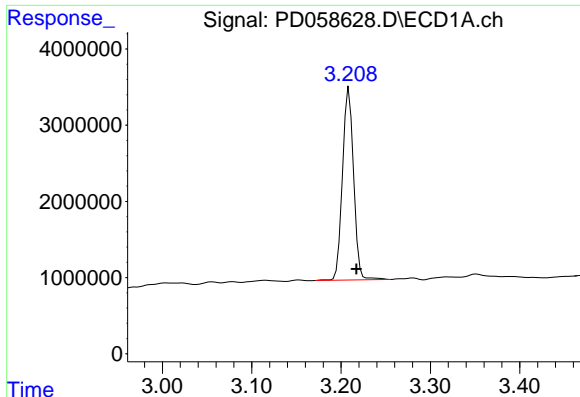
Data Path : Z:\pestpcbsrv\HPCHEM1\ECD_D\Data\PD071620\
 Data File : PD058628.D
 Signal(s) : Signal #1: ECD1A.ch Signal #2: ECD2B.ch
 Acq On : 16 Jul 2020 12:04
 Operator : AJ\MA
 Sample : L3305-01
 Misc :
 ALS Vial : 12 Sample Multiplier: 1

Instrument :
 ECD_D
 Client Sampled :
 FK-GF-02-057-A

Integration File signal 1: autoint1.e
 Integration File signal 2: autoint2.e
 Quant Time: Jul 17 03:48:36 2020
 Quant Method : Z:\pestpcbsrv\HPCHEM1\ECD_D\Method\PD070720.M
 Quant Title : GC Extractables
 QLast Update : Wed Jul 08 08:01:25 2020
 Response via : Initial Calibration
 Integrator: ChemStation

Volume Inj. : 2 µl
 Signal #1 Phase : ZB-MR2 Signal #2 Phase: ZB-MR1
 Signal #1 Info : 30M x 0.32mm x0.2 Signal #2 Info : 30M x 0.32mm x 0.50µm

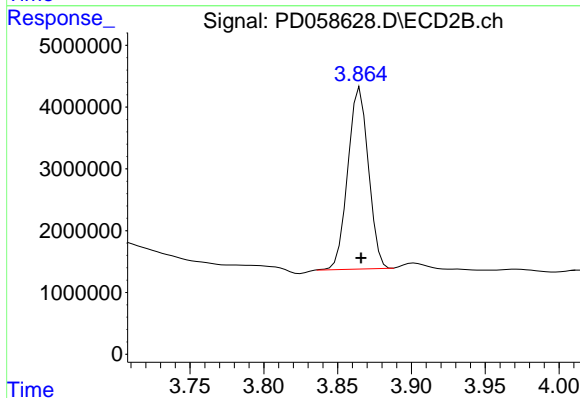




#1 Tetrachloro-m-xylene

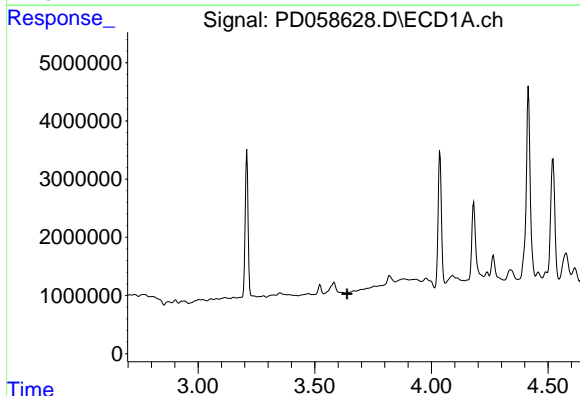
R.T.: 3.209 min
 Delta R.T.: -0.008 min
 Response: 21863805
 Conc: 11.99 ng/ml

Instrument :
 ECD_D
 ClientSampleId :
 FK-GF-02-057-A



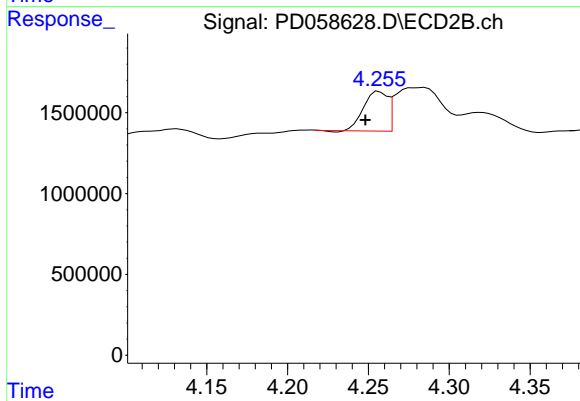
#1 Tetrachloro-m-xylene

R.T.: 3.865 min
 Delta R.T.: 0.000 min
 Response: 28485787
 Conc: 11.53 ng/ml



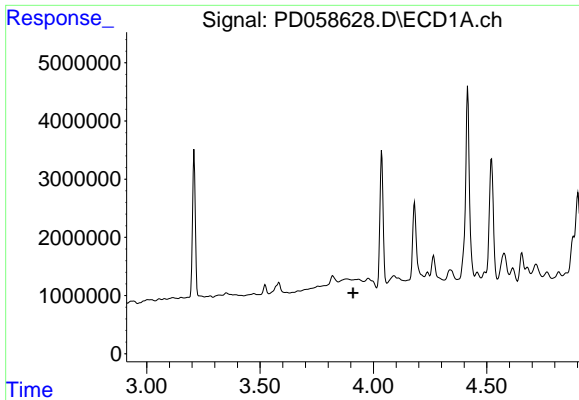
#2 alpha-BHC

R.T.: 0.000 min
 Exp R.T. : 3.639 min
 Response: 0
 Conc: N.D.



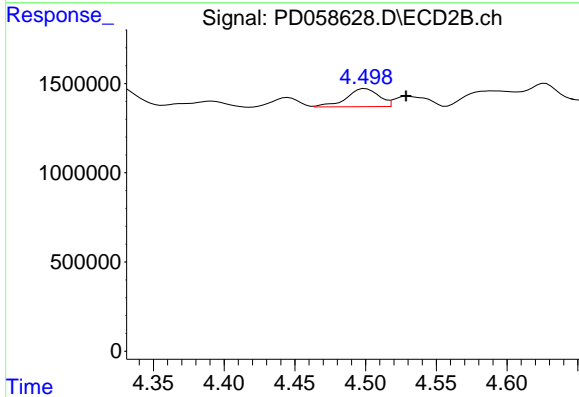
#2 alpha-BHC

R.T.: 4.257 min
 Delta R.T.: 0.009 min
 Response: 2503716
 Conc: 0.66 ng/ml

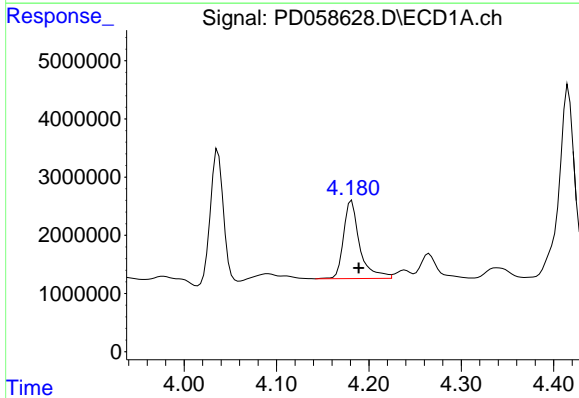


#3 gamma-BHC (Lindane)
 R.T.: 0.000 min
 Exp R.T.: 3.910 min
 Response: 0
 Conc: N.D.

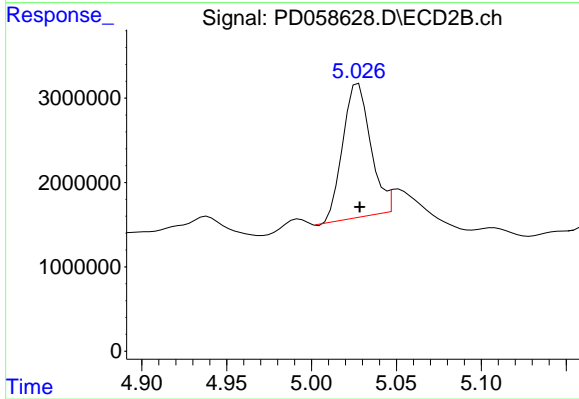
Instrument :
 ECD_D
 ClientSampleId :
 FK-GF-02-057-A



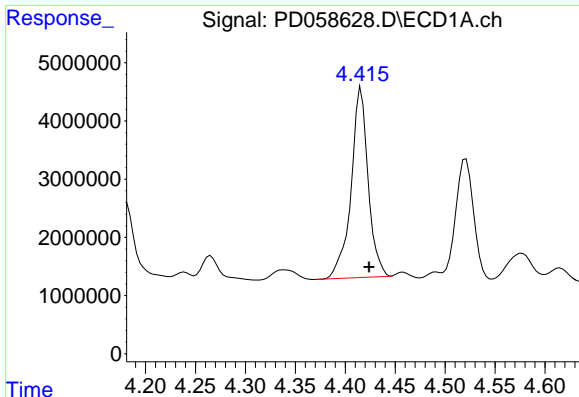
#3 gamma-BHC (Lindane)
 R.T.: 4.500 min
 Delta R.T.: -0.029 min
 Response: 1607249
 Conc: 0.46 ng/ml



#4 Heptachlor
 R.T.: 4.181 min
 Delta R.T.: -0.008 min
 Response: 16308513
 Conc: 8.99 ng/ml



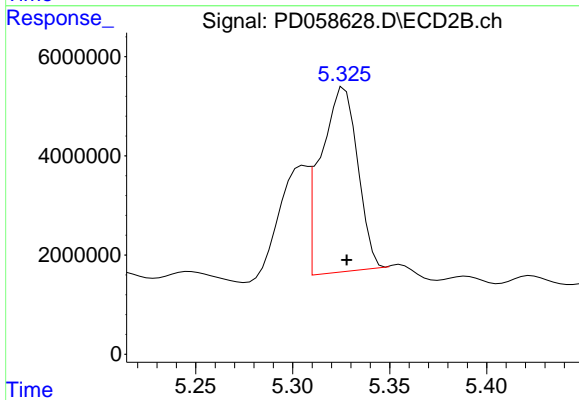
#4 Heptachlor
 R.T.: 5.028 min
 Delta R.T.: 0.000 min
 Response: 17968832
 Conc: 5.71 ng/ml



#5 Aldrin

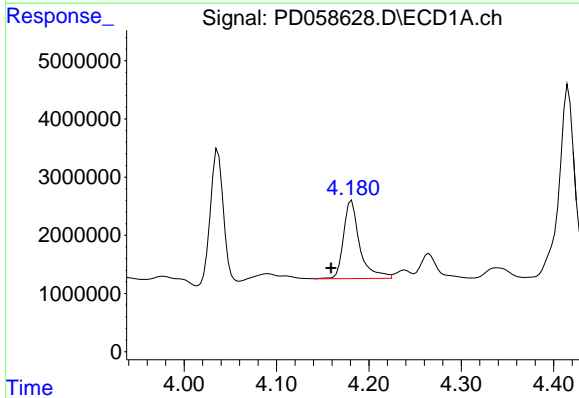
R.T.: 4.416 min
 Delta R.T.: -0.008 min
 Response: 38747007
 Conc: 16.27 ng/ml

Instrument :
 ECD_D
 ClientSampleId :
 FK-GF-02-057-A



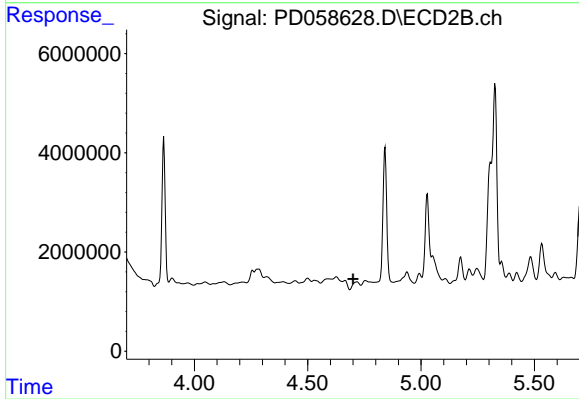
#5 Aldrin

R.T.: 5.327 min
 Delta R.T.: -0.001 min
 Response: 49256148
 Conc: 15.53 ng/ml



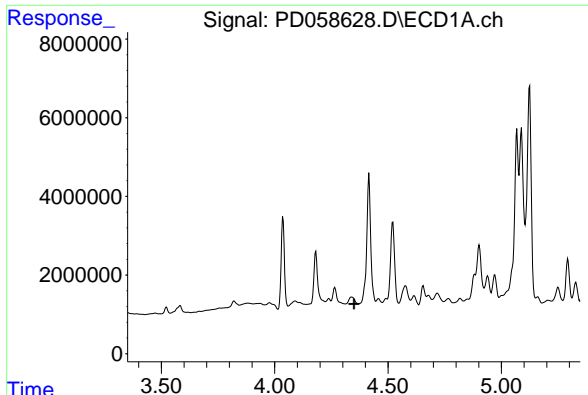
#6 beta-BHC

R.T.: 4.181 min
 Delta R.T.: 0.022 min
 Response: 16308513
 Conc: 15.92 ng/ml



#6 beta-BHC

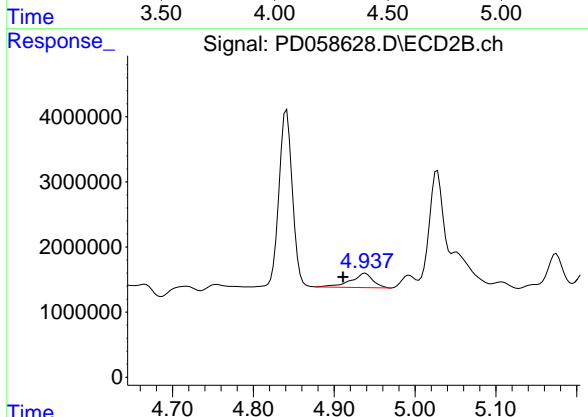
R.T.: 4.717 min
 Delta R.T.: 0.017 min
 Response: -329853
 Conc: N.D.



#7 delta-BHC

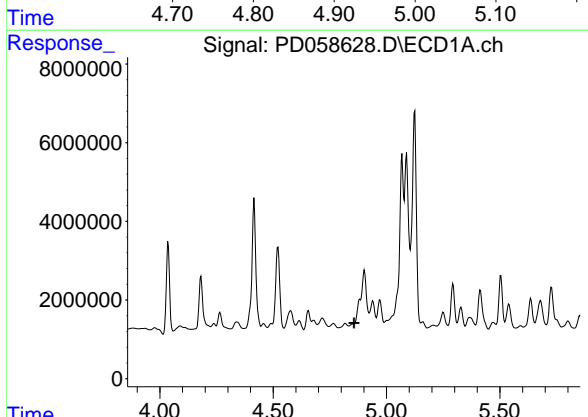
R.T.: 0.000 min
 Exp R.T.: 4.350 min
 Response: 0
 Conc: N.D.

Instrument :
 ECD_D
 ClientSampleId :
 FK-GF-02-057-A



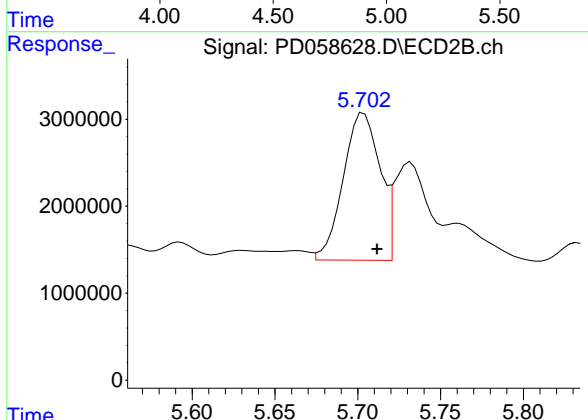
#7 delta-BHC

R.T.: 4.938 min
 Delta R.T.: 0.028 min
 Response: 4131366
 Conc: 1.34 ng/ml



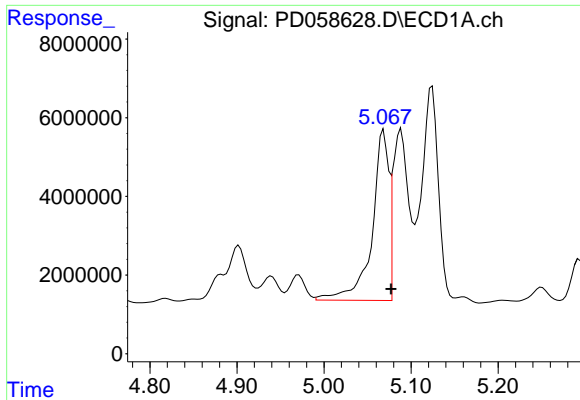
#8 Heptachlor epoxide

R.T.: 0.000 min
 Exp R.T.: 4.857 min
 Response: 0
 Conc: N.D.



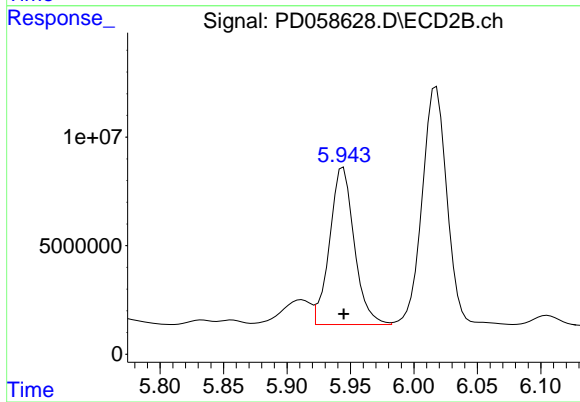
#8 Heptachlor epoxide

R.T.: 5.704 min
 Delta R.T.: -0.008 min
 Response: 26074834
 Conc: 8.96 ng/ml

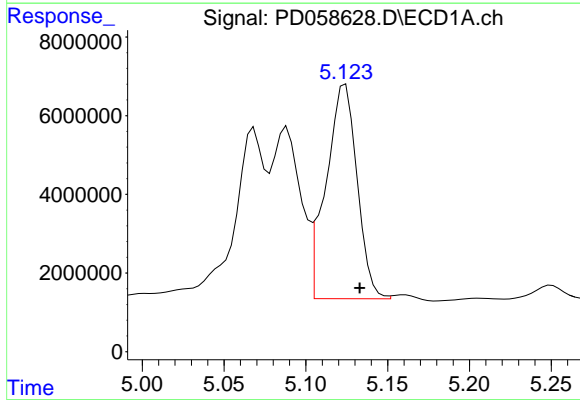


#10 gamma-Chlordane
R.T.: 5.068 min
Delta R.T.: -0.009 min
Response: 58128640
Conc: 26.11 ng/ml

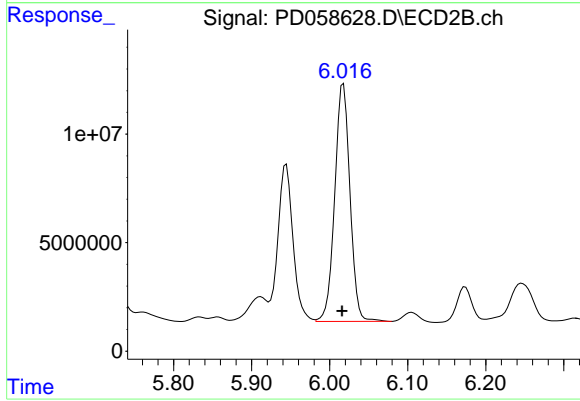
Instrument :
ECD_D
ClientSampleId :
FK-GF-02-057-A



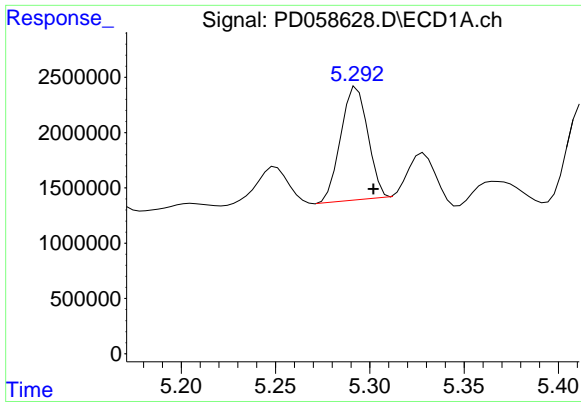
#10 gamma-Chlordane
R.T.: 5.944 min
Delta R.T.: 0.000 min
Response: 97867567
Conc: 33.63 ng/ml



#11 alpha-Chlordane
R.T.: 5.124 min
Delta R.T.: -0.009 min
Response: 71824274
Conc: 32.44 ng/ml



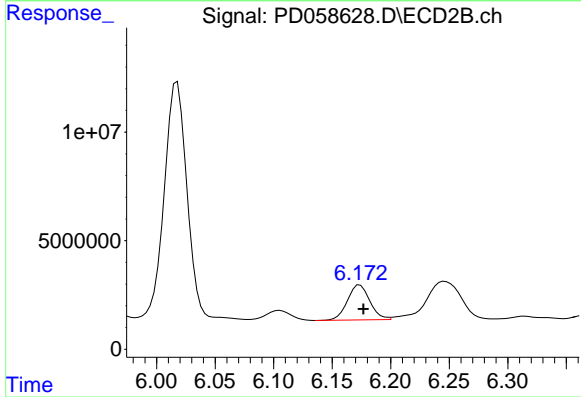
#11 alpha-Chlordane
R.T.: 6.018 min
Delta R.T.: 0.002 min
Response: 148446396
Conc: 51.62 ng/ml



#12 4,4'-DDE

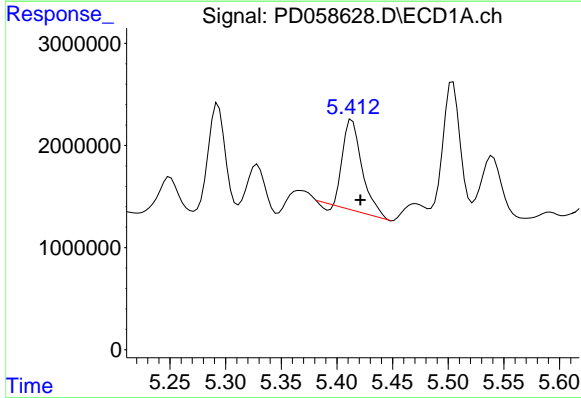
R.T.: 5.293 min
 Delta R.T.: -0.009 min
 Response: 10199302
 Conc: 4.73 ng/ml

Instrument :
 ECD_D
 ClientSampleId :
 FK-GF-02-057-A



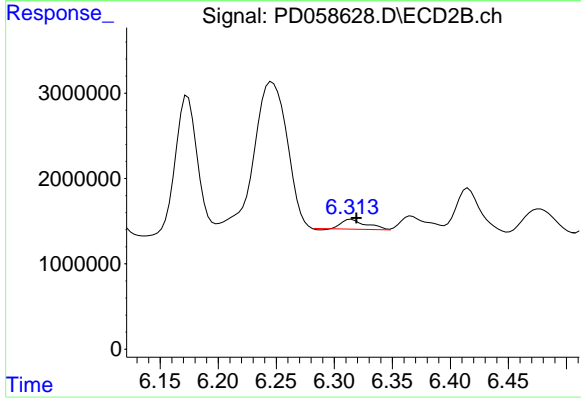
#12 4,4'-DDE

R.T.: 6.174 min
 Delta R.T.: -0.003 min
 Response: 21465338
 Conc: 7.81 ng/ml



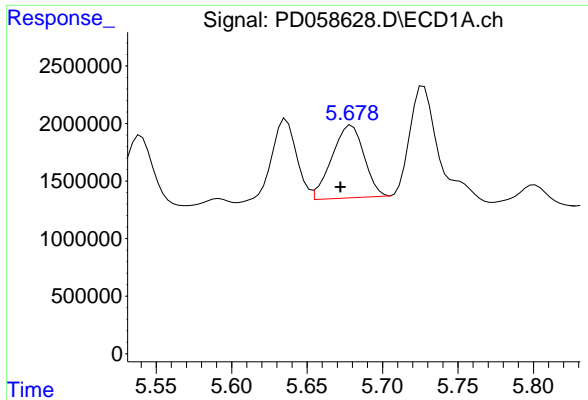
#13 Dieldrin

R.T.: 5.414 min
 Delta R.T.: -0.007 min
 Response: 10344494
 Conc: 5.80 ng/ml



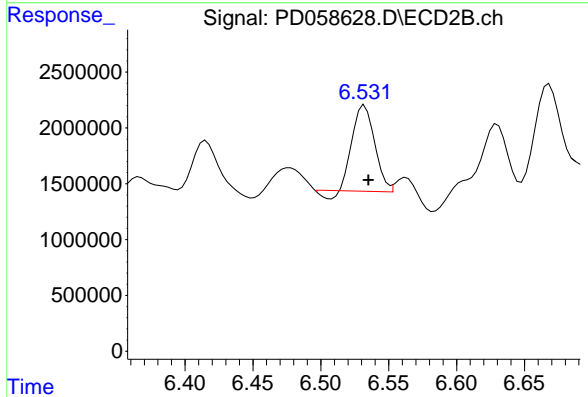
#13 Dieldrin

R.T.: 6.315 min
 Delta R.T.: -0.004 min
 Response: 1668412
 Conc: 0.58 ng/ml

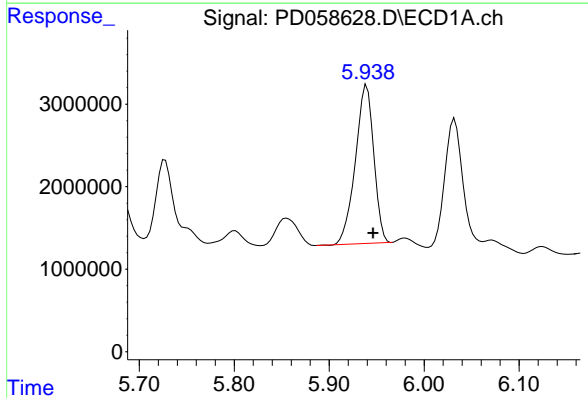


#14 Endrin
 R.T.: 5.679 min
 Delta R.T.: 0.007 min
 Response: 9350627
 Conc: 6.57 ng/ml

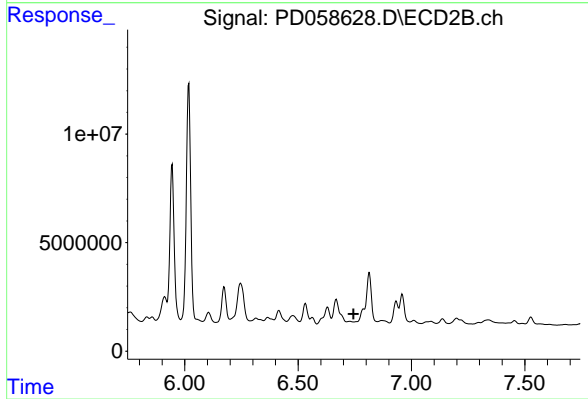
Instrument :
 ECD_D
 ClientSampleId :
 FK-GF-02-057-A



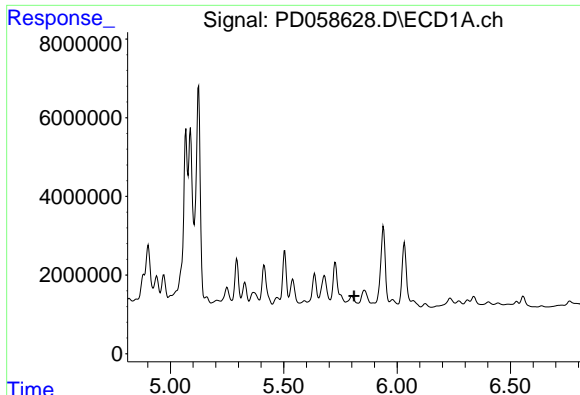
#14 Endrin
 R.T.: 6.532 min
 Delta R.T.: -0.003 min
 Response: 8442546
 Conc: 3.97 ng/ml



#15 Endosulfan II
 R.T.: 5.940 min
 Delta R.T.: -0.006 min
 Response: 25792551
 Conc: 14.29 ng/ml



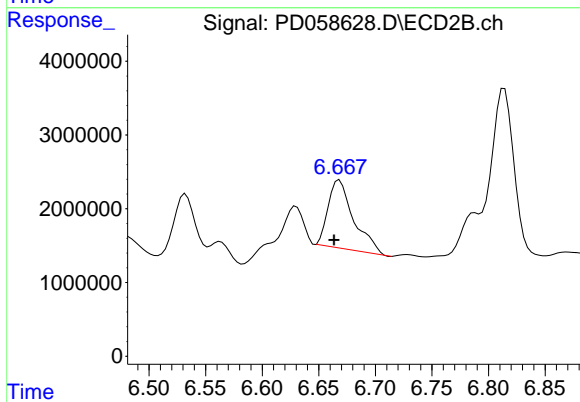
#15 Endosulfan II
 R.T.: 0.000 min
 Exp R.T. : 6.745 min
 Response: 0
 Conc: N.D.



#16 4,4'-DDD

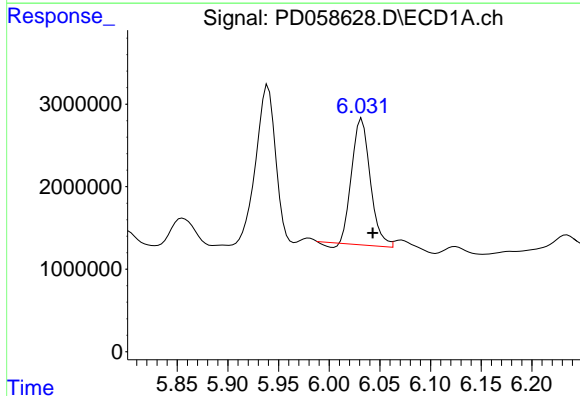
R.T.: 0.000 min
 Exp R.T.: 5.810 min
 Response: 0
 Conc: N.D.

Instrument :
 ECD_D
 ClientSampled :
 FK-GF-02-057-A



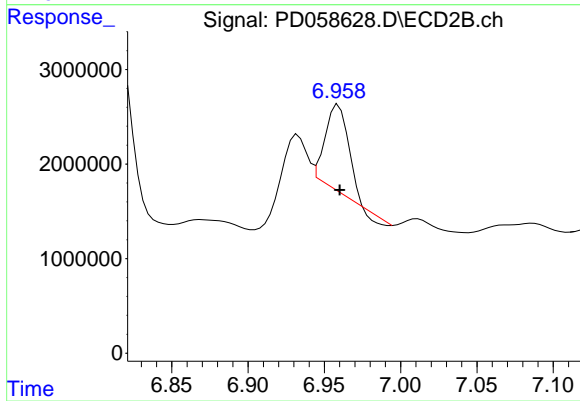
#16 4,4'-DDD

R.T.: 6.668 min
 Delta R.T.: 0.005 min
 Response: 14570920
 Conc: 6.32 ng/ml



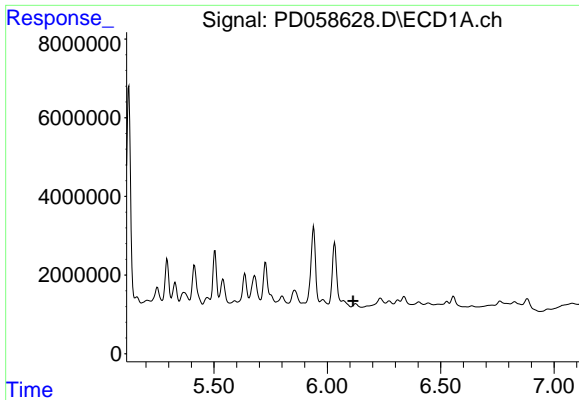
#17 4,4'-DDT

R.T.: 6.032 min
 Delta R.T.: -0.011 min
 Response: 19318041
 Conc: 13.11 ng/ml



#17 4,4'-DDT

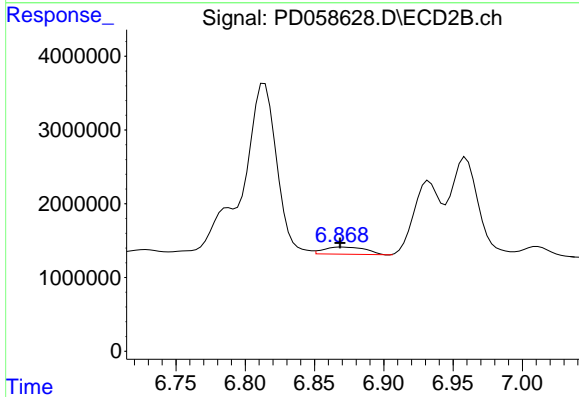
R.T.: 6.959 min
 Delta R.T.: 0.000 min
 Response: 9333488
 Conc: 4.07 ng/ml



#18 Endrin aldehyde

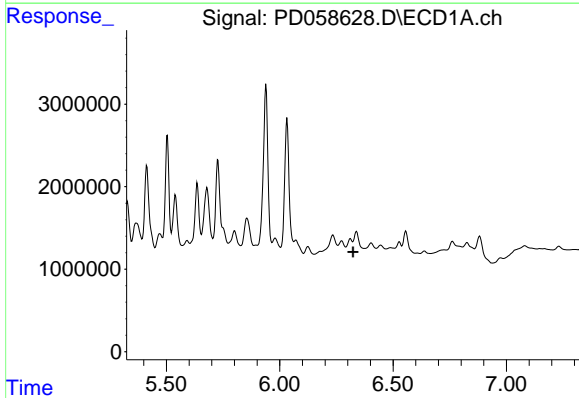
R.T.: 0.000 min
 Exp R.T.: 6.114 min
 Response: 0
 Conc: N.D.

Instrument :
 ECD_D
 ClientSampleId :
 FK-GF-02-057-A



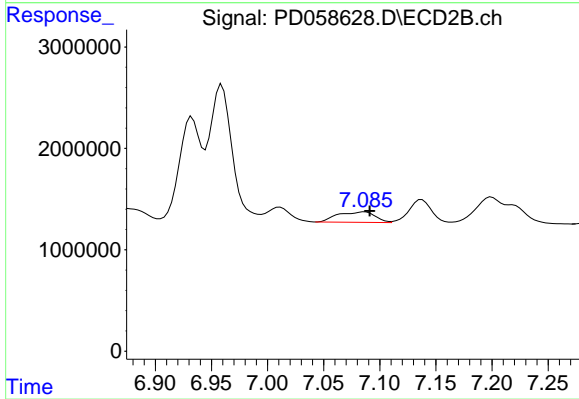
#18 Endrin aldehyde

R.T.: 6.869 min
 Delta R.T.: 0.001 min
 Response: 1571594
 Conc: 0.73 ng/ml



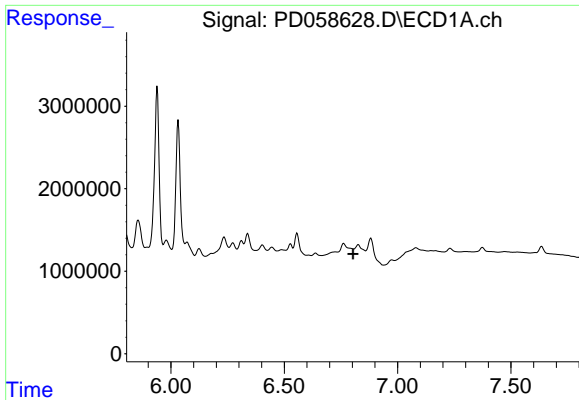
#19 Endosulfan Sulfate

R.T.: 0.000 min
 Exp R.T.: 6.324 min
 Response: 0
 Conc: N.D.



#19 Endosulfan Sulfate

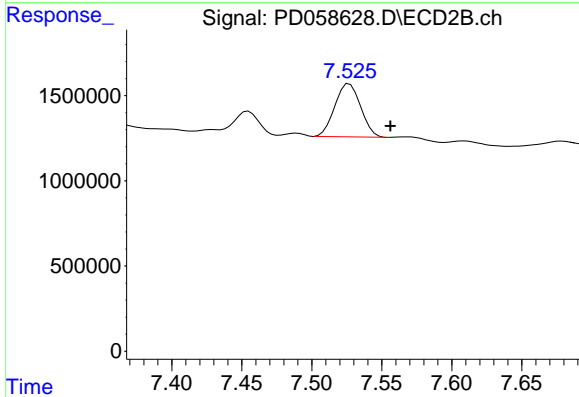
R.T.: 7.087 min
 Delta R.T.: -0.004 min
 Response: 2376193
 Conc: 1.04 ng/ml



#21 Endrin ketone

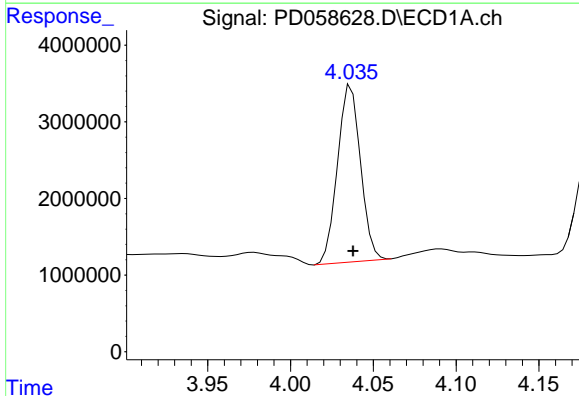
R.T.: 0.000 min
 Exp R.T.: 6.804 min
 Response: 0
 Conc: N.D.

Instrument :
 ECD_D
 ClientSampleId :
 FK-GF-02-057-A



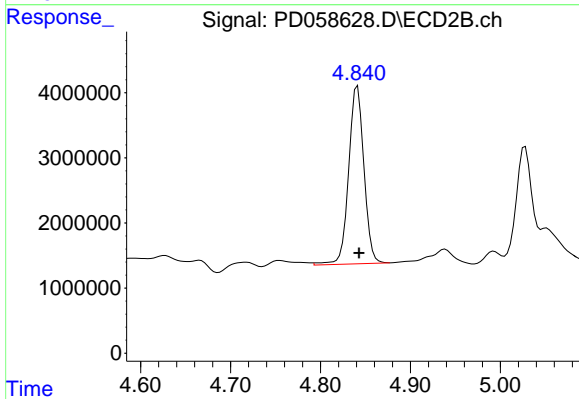
#21 Endrin ketone

R.T.: 7.527 min
 Delta R.T.: -0.029 min
 Response: 4000608
 Conc: 1.47 ng/ml



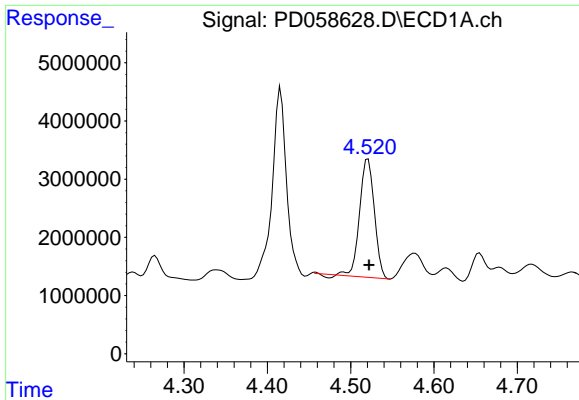
#23 Chlordane-1

R.T.: 4.037 min
 Delta R.T.: -0.001 min
 Response: 22299783
 Conc: 382.15 ng/ml



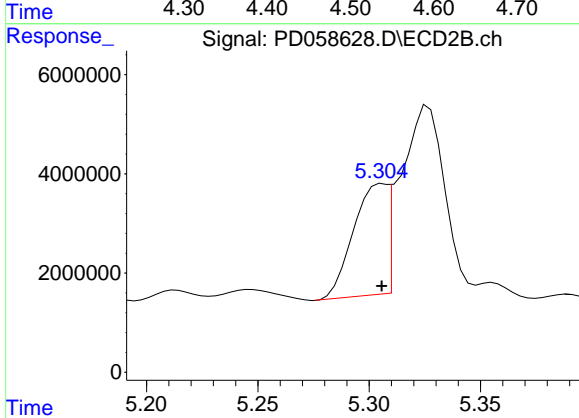
#23 Chlordane-1

R.T.: 4.841 min
 Delta R.T.: -0.002 min
 Response: 32120008
 Conc: 360.89 ng/ml

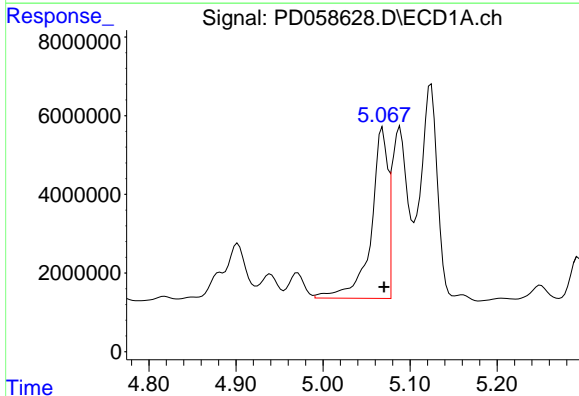


#24 Chlordane-2
R.T.: 4.521 min
Delta R.T.: -0.001 min
Response: 24826977
Conc: 384.08 ng/ml

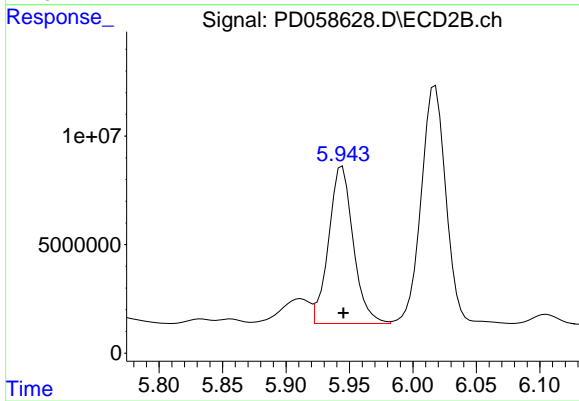
Instrument :
ECD_D
ClientSampleId :
FK-GF-02-057-A



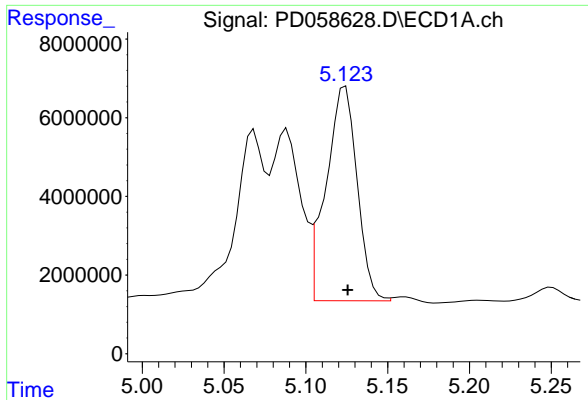
#24 Chlordane-2
R.T.: 5.307 min
Delta R.T.: 0.000 min
Response: 23129572
Conc: 234.14 ng/ml



#25 Chlordane-3
R.T.: 5.068 min
Delta R.T.: -0.002 min
Response: 58128640
Conc: 283.98 ng/ml

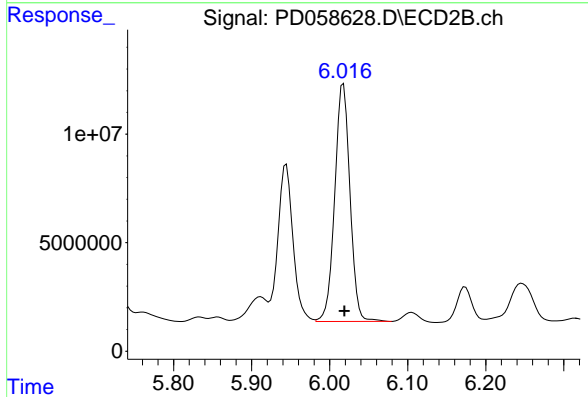


#25 Chlordane-3
R.T.: 5.944 min
Delta R.T.: 0.000 min
Response: 97867567
Conc: 263.12 ng/ml

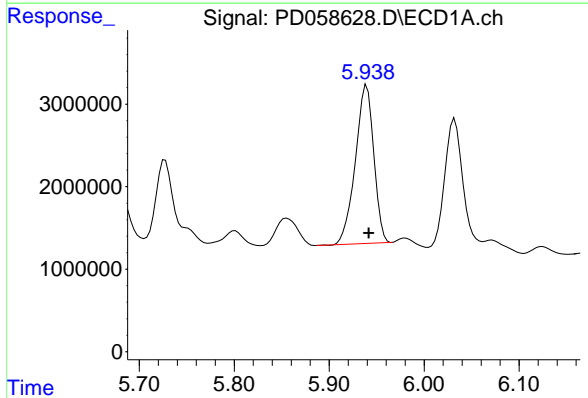


#26 Chlordane-4
R.T.: 5.124 min
Delta R.T.: -0.001 min
Response: 71824274
Conc: 376.38 ng/ml

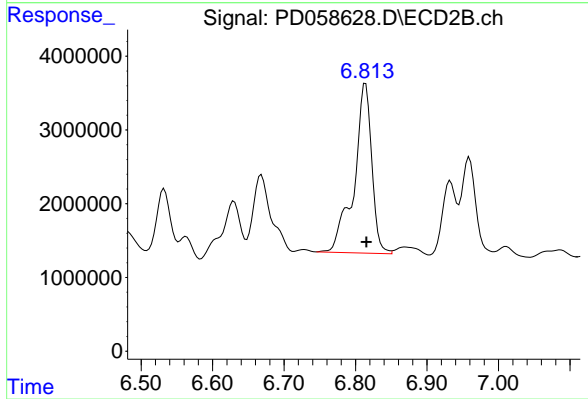
Instrument :
ECD_D
ClientSampleId :
FK-GF-02-057-A



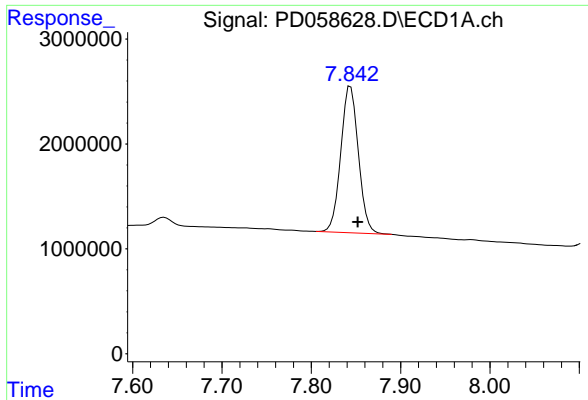
#26 Chlordane-4
R.T.: 6.018 min
Delta R.T.: -0.001 min
Response: 148446396
Conc: 341.26 ng/ml



#27 Chlordane-5
R.T.: 5.940 min
Delta R.T.: -0.002 min
Response: 25792551
Conc: 419.72 ng/ml



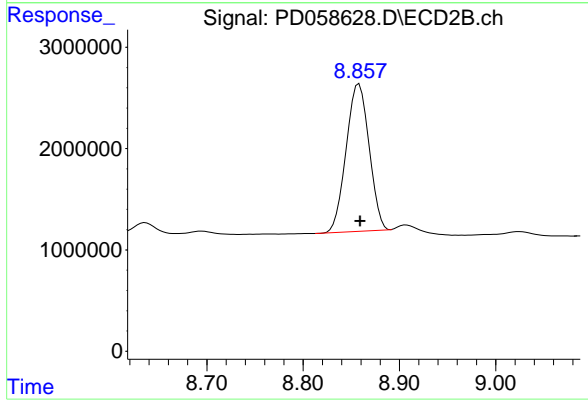
#27 Chlordane-5
R.T.: 6.814 min
Delta R.T.: -0.001 min
Response: 39566273
Conc: 496.57 ng/ml



#28 Decachlorobiphenyl

R.T.: 7.844 min
Delta R.T.: -0.008 min
Response: 19064605
Conc: 10.56 ng/ml

Instrument :
ECD_D
ClientSampled :
FK-GF-02-057-A



#28 Decachlorobiphenyl

R.T.: 8.858 min
Delta R.T.: -0.001 min
Response: 24027068
Conc: 11.02 ng/ml