

Data Path : Z:\pestpcbsrv\HPCHEM1\ECD_D\Data\PD071718\
 Data File : PD048441.D
 Signal(s) : Signal #1: ECD1A.CH Signal #2: ECD2B.CH
 Acq On : 17 Jul 2018 9:14
 Operator : AJ\SJ
 Sample : PB111147BL
 Misc :
 ALS Vial : 5 Sample Multiplier: 1

Instrument :
 ECD_D
 ClientSampleId :
 PBLK47

Integration File signal 1: autoint1.e
 Integration File signal 2: autoint2.e
 Quant Time: Jul 18 04:32:02 2018
 Quant Method : Z:\PESTPCBSRV\HPCHEM1\ECD_D\Method\PD062818CLP.M
 Quant Title : GC Extractables
 QLast Update : Fri Jun 29 16:27:50 2018
 Response via : Initial Calibration
 Integrator: ChemStation 6890 Scale Mode: Large solvent peaks clipped

Volume Inj. : 1 µl
 Signal #1 Phase : ZB-MR2 Signal #2 Phase: ZB-MR1
 Signal #1 Info : 30M x 0.32mm x0.2 Signal #2 Info : 30M x 0.32mm x 0.50µm

Compound	RT#1	RT#2	Resp#1	Resp#2	ng/ml	ng/ml

System Monitoring Compounds						
1) SA Tetrachlo...	3.393	4.006	25170046	389.7E6	20.829	19.143
2) SA Decachlor...	8.084	9.051	58801238	798.1E6	43.986	45.038
Target Compounds						
2) A alpha-BHC	0.000	4.430f	0	5990077	N.D.	0.186
3) MA gamma-BHC...	0.000	4.635f	0	12864243	N.D.	0.443
5) MB Aldrin	0.000	5.466f	0	8285631	N.D.	0.298
6) B beta-BHC	4.321f	4.783f	5631601	2830711	7.532	0.220 #
7) B delta-BHC	0.000	5.037	0	117.9E6	N.D.	3.829
8) B Heptachlo...	0.000	5.849	0	78817365	N.D.	3.070
10) B trans-Chl...	0.000	6.062f	0	4807081	N.D.	0.186
12) B 4,4'-DDE	0.000	6.310	0	11948650	N.D.	0.500
17) MA 4,4'-DDT	0.000	7.120	0	121.1E6	N.D.	6.317
19) B Endosulfa...	6.571	7.200f	2821664	320.4E6	2.031	15.911 #
20) A Methoxychlor	6.751f	7.582	3416128	30749036	4.515	3.631
24) Toxaphene-3	6.448	7.142	14430025	104.6E6	506.729	204.654 #
25) Toxaphene-4	6.751	7.200	3416128	320.4E6	144.472	1055.057 #
26) Toxaphene-5	0.000	7.582	0	30749036	N.D.	153.260

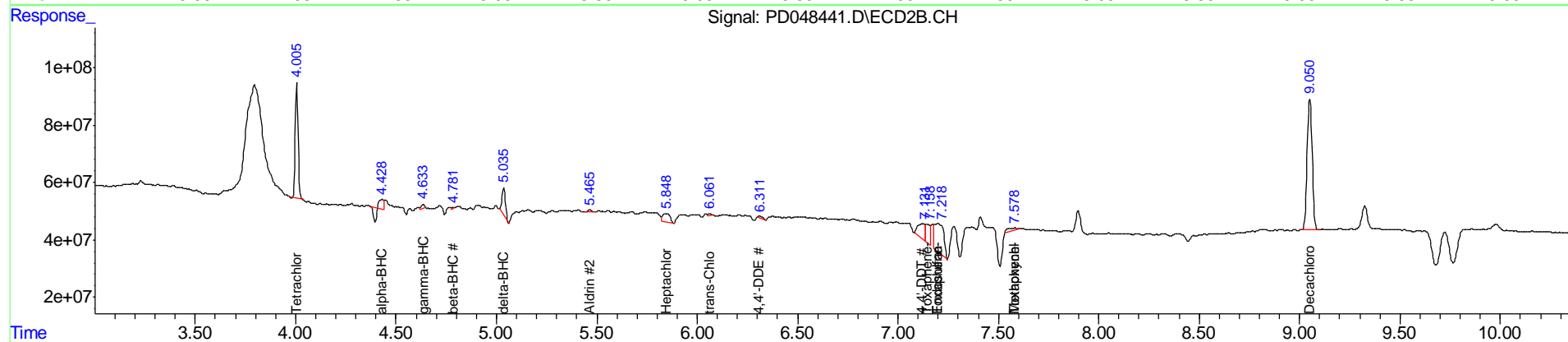
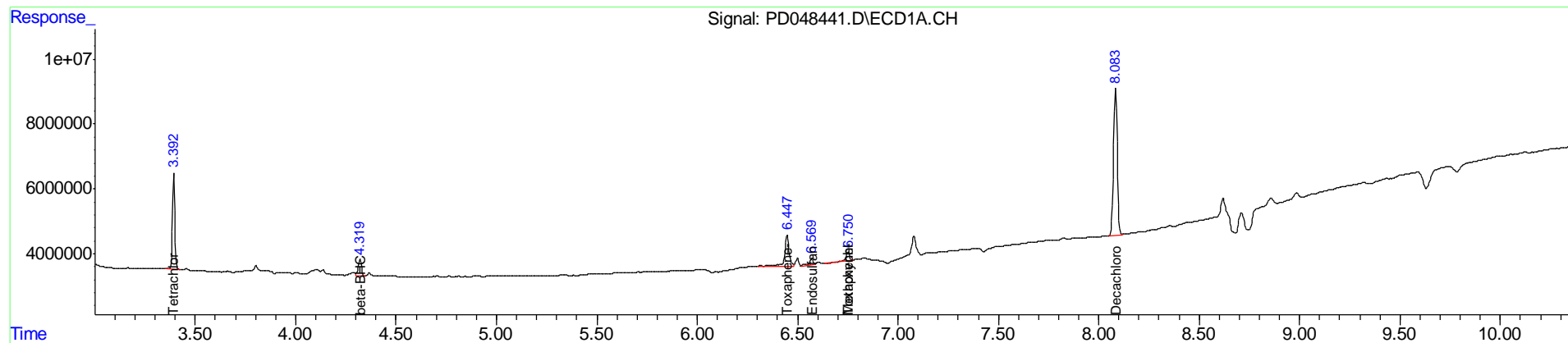
(f)=RT Delta > 1/2 Window (#)=Amounts differ by > 25% (m)=manual int.

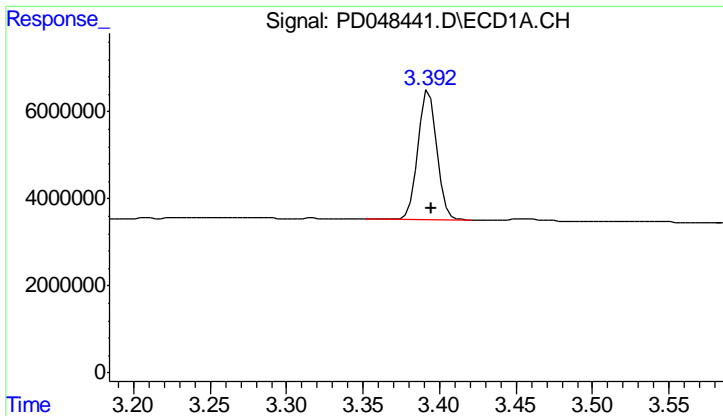
Data Path : Z:\pestpcbsrv\HPCHEM1\ECD_D\Data\PD071718\
 Data File : PD048441.D
 Signal(s) : Signal #1: ECD1A.CH Signal #2: ECD2B.CH
 Acq On : 17 Jul 2018 9:14
 Operator : AJ\SJ
 Sample : PB111147BL
 Misc :
 ALS Vial : 5 Sample Multiplier: 1

Instrument :
 ECD_D
 Client Sampled :
 PBLK47

Integration File signal 1: autoint1.e
 Integration File signal 2: autoint2.e
 Quant Time: Jul 18 04:32:02 2018
 Quant Method : Z:\PESTPCBSRV\HPCHEM1\ECD_D\Method\PD062818CLP.M
 Quant Title : GC Extractables
 QLast Update : Fri Jun 29 16:27:50 2018
 Response via : Initial Calibration
 Integrator: ChemStation 6890 Scale Mode: Large solvent peaks clipped

Volume Inj. : 1 µl
 Signal #1 Phase : ZB-MR2 Signal #2 Phase: ZB-MR1
 Signal #1 Info : 30M x 0.32mm x0.2 Signal #2 Info : 30M x 0.32mm x 0.50µm

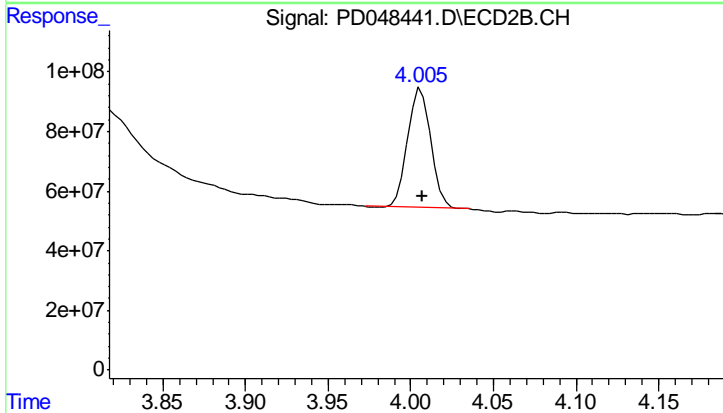




#1 Tetrachloro-m-xylene

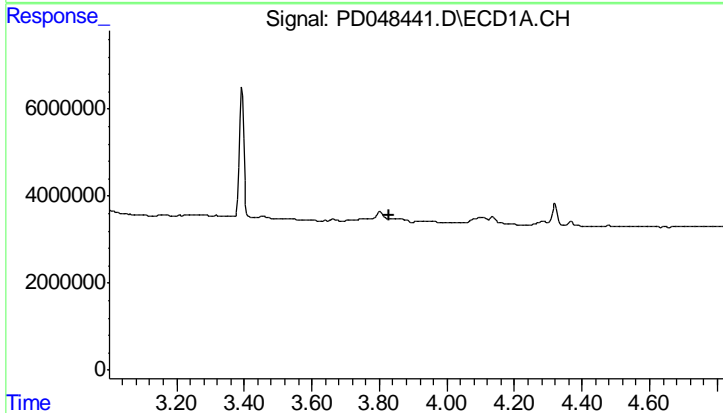
R.T.: 3.393 min
 Delta R.T.: -0.002 min
 Response: 25170046
 Conc: 20.83 ng/ml

Instrument :
 ECD_D
 ClientSampleId :
 PBLK47



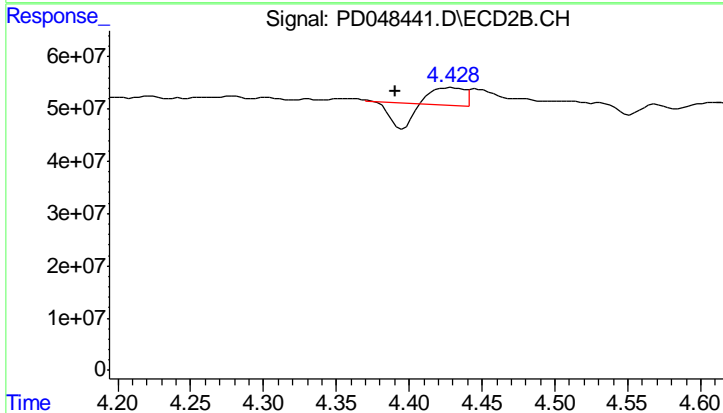
#1 Tetrachloro-m-xylene

R.T.: 4.006 min
 Delta R.T.: 0.000 min
 Response: 389747618
 Conc: 19.14 ng/ml



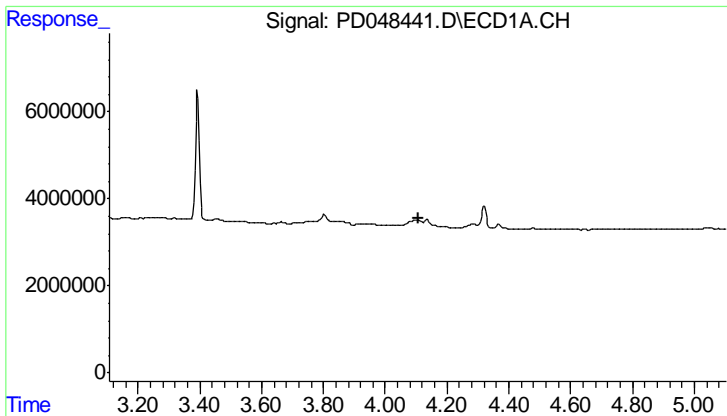
#2 alpha-BHC

R.T.: 0.000 min
 Exp R.T. : 3.828 min
 Response: 0
 Conc: N.D.



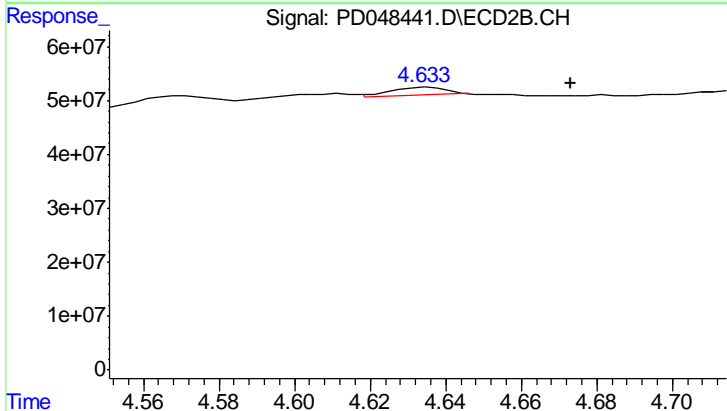
#2 alpha-BHC

R.T.: 4.430 min
 Delta R.T.: 0.038 min
 Response: 5990077
 Conc: 0.19 ng/ml

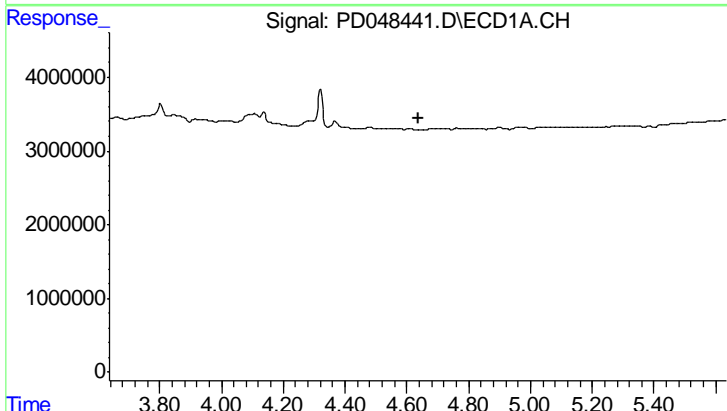


#3 gamma-BHC (Lindane)
 R.T.: 0.000 min
 Exp R.T.: 4.106 min
 Response: 0
 Conc: N.D.

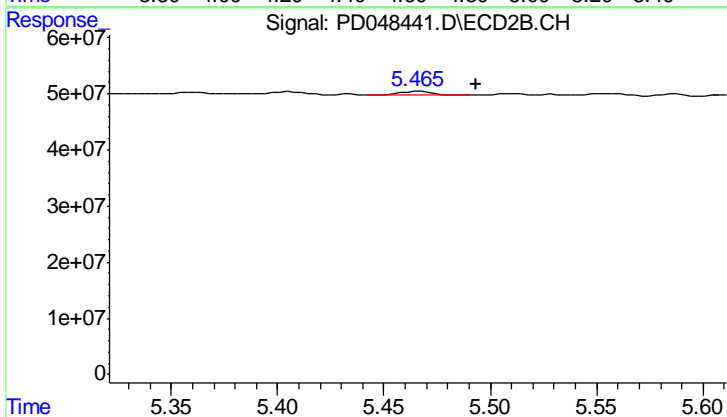
Instrument :
 ECD_D
 ClientSampleId :
 PBLK47



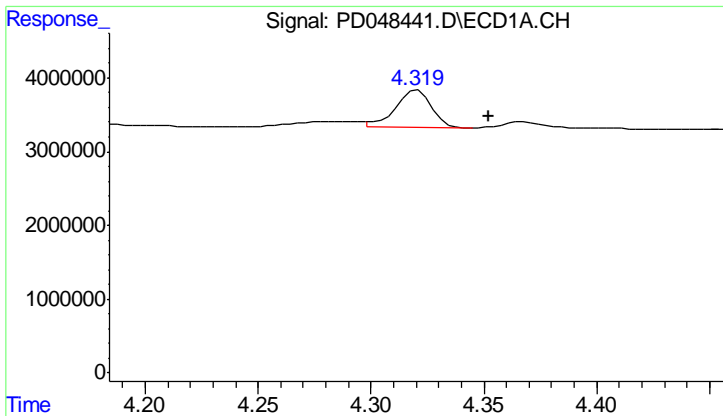
#3 gamma-BHC (Lindane)
 R.T.: 4.635 min
 Delta R.T.: -0.038 min
 Response: 12864243
 Conc: 0.44 ng/ml



#5 Aldrin
 R.T.: 0.000 min
 Exp R.T.: 4.637 min
 Response: 0
 Conc: N.D.



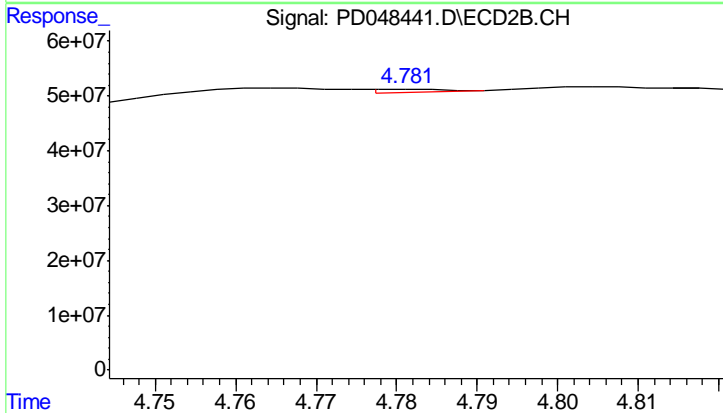
#5 Aldrin
 R.T.: 5.466 min
 Delta R.T.: -0.027 min
 Response: 8285631
 Conc: 0.30 ng/ml



#6 beta-BHC

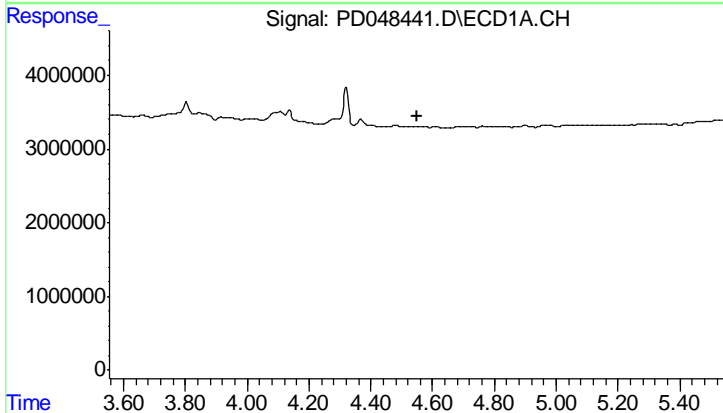
R.T.: 4.321 min
 Delta R.T.: -0.031 min
 Response: 5631601
 Conc: 7.53 ng/ml

Instrument :
 ECD_D
 ClientSampled :
 PBLK47



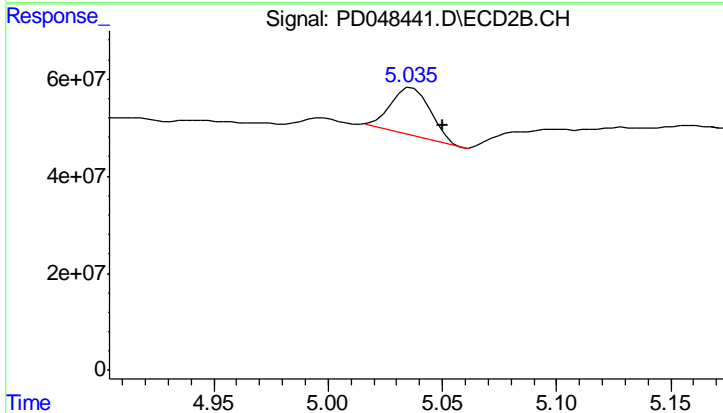
#6 beta-BHC

R.T.: 4.783 min
 Delta R.T.: -0.049 min
 Response: 2830711
 Conc: 0.22 ng/ml



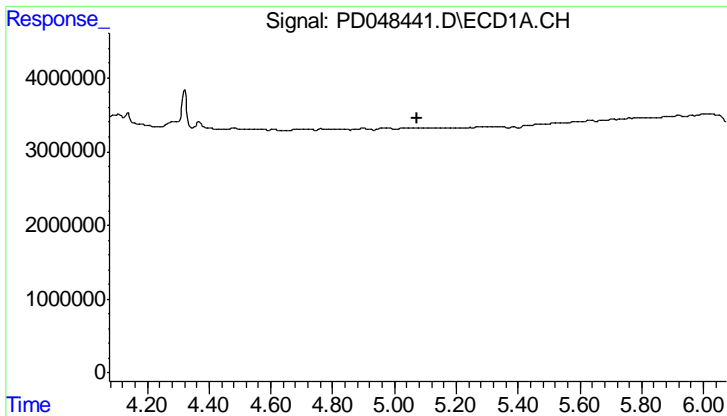
#7 delta-BHC

R.T.: 0.000 min
 Exp R.T. : 4.551 min
 Response: 0
 Conc: N.D.



#7 delta-BHC

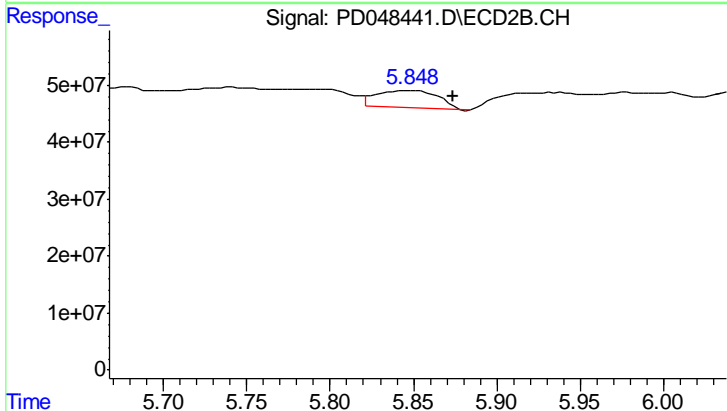
R.T.: 5.037 min
 Delta R.T.: -0.013 min
 Response: 117939201
 Conc: 3.83 ng/ml



#8 Heptachlor epoxide

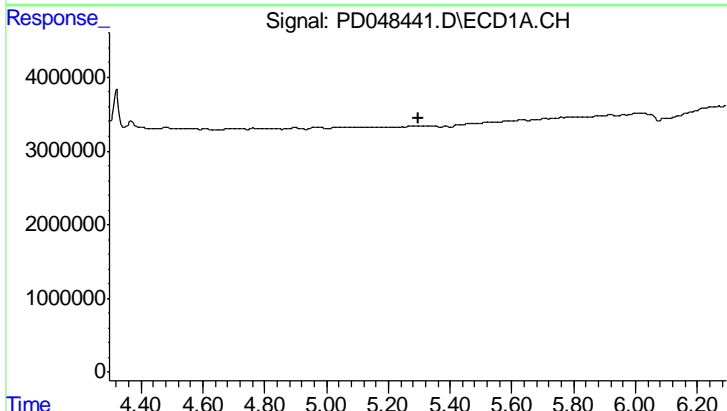
R.T.: 0.000 min
 Exp R.T.: 5.075 min
 Response: 0
 Conc: N.D.

Instrument :
 ECD_D
 ClientSampleId :
 PBLK47



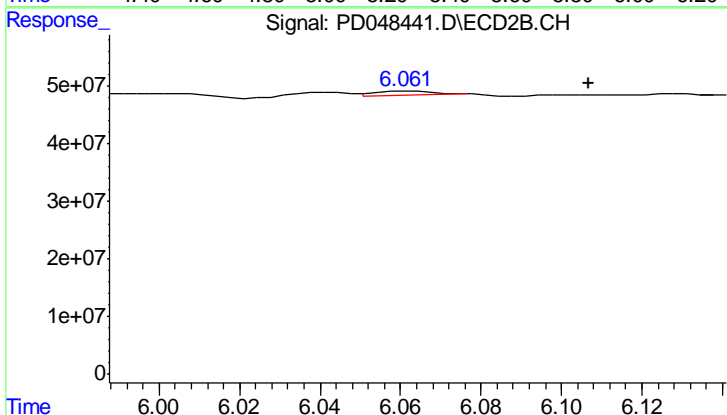
#8 Heptachlor epoxide

R.T.: 5.849 min
 Delta R.T.: -0.025 min
 Response: 78817365
 Conc: 3.07 ng/ml



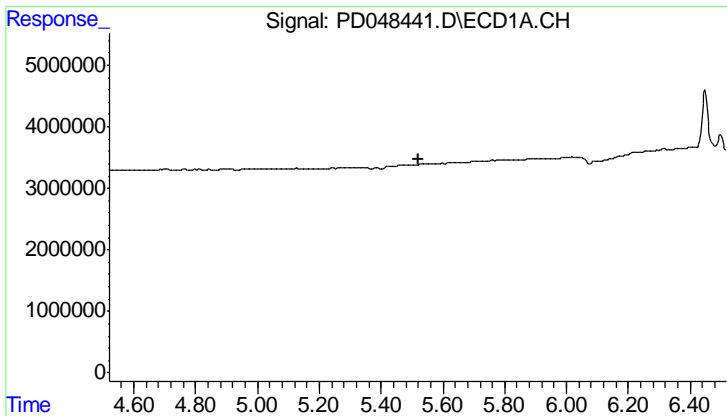
#10 trans-Chlordane

R.T.: 0.000 min
 Exp R.T.: 5.296 min
 Response: 0
 Conc: N.D.



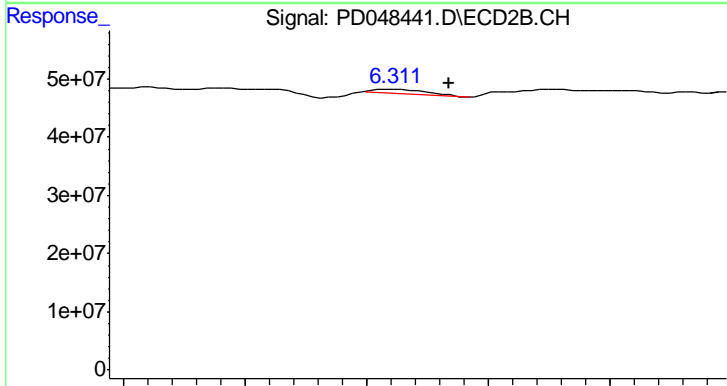
#10 trans-Chlordane

R.T.: 6.062 min
 Delta R.T.: -0.045 min
 Response: 4807081
 Conc: 0.19 ng/ml

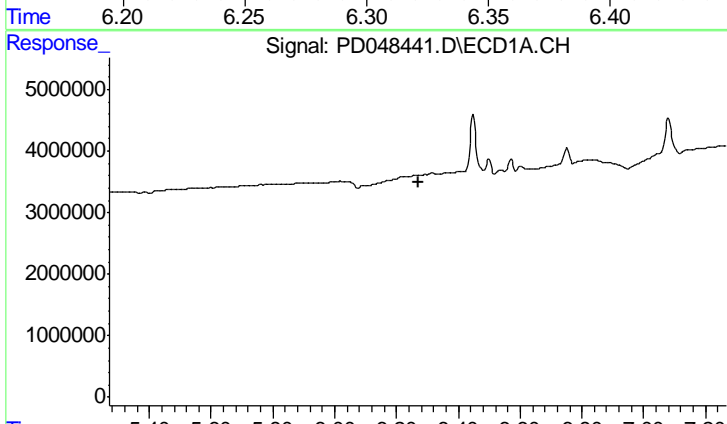


#12 4,4'-DDE
 R.T.: 0.000 min
 Exp R.T.: 5.520 min
 Response: 0
 Conc: N.D.

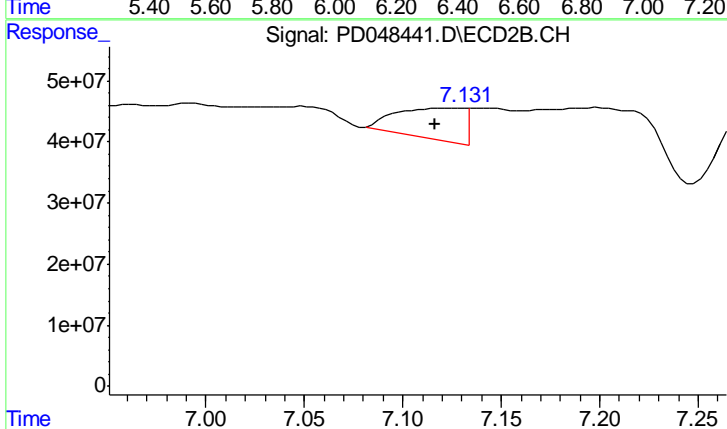
Instrument :
 ECD_D
 ClientSampled :
 PBLK47



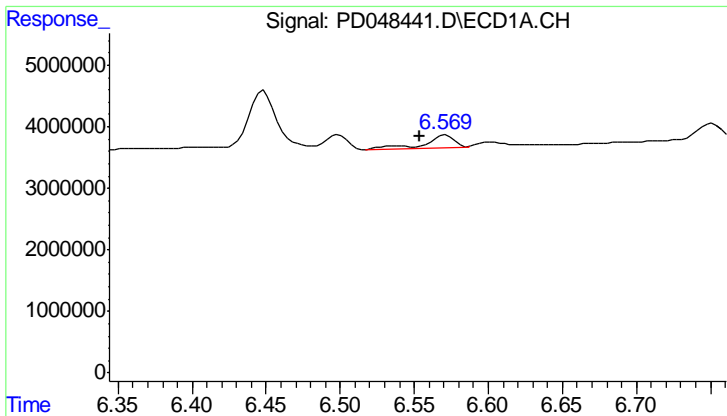
#12 4,4'-DDE
 R.T.: 6.310 min
 Delta R.T.: -0.024 min
 Response: 11948650
 Conc: 0.50 ng/ml



#17 4,4'-DDT
 R.T.: 0.000 min
 Exp R.T.: 6.269 min
 Response: 0
 Conc: N.D.

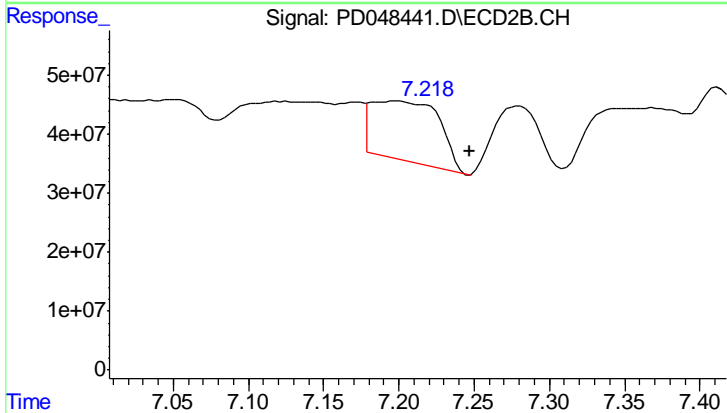


#17 4,4'-DDT
 R.T.: 7.120 min
 Delta R.T.: 0.003 min
 Response: 121118521
 Conc: 6.32 ng/ml

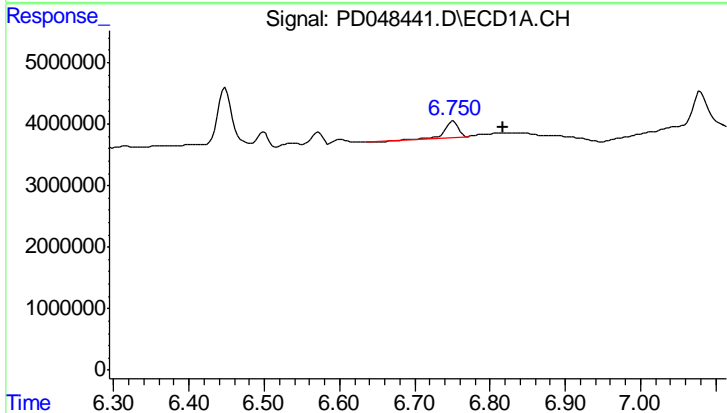


#19 Endosulfan Sulfate
 R.T.: 6.571 min
 Delta R.T.: 0.017 min
 Response: 2821664
 Conc: 2.03 ng/ml

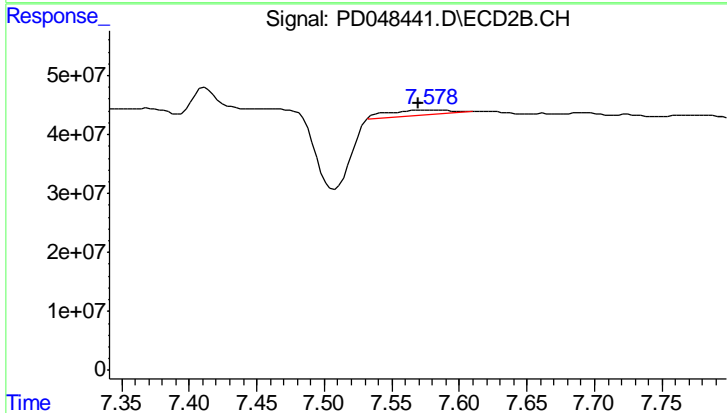
Instrument :
 ECD_D
 ClientSampleId :
 PBLK47



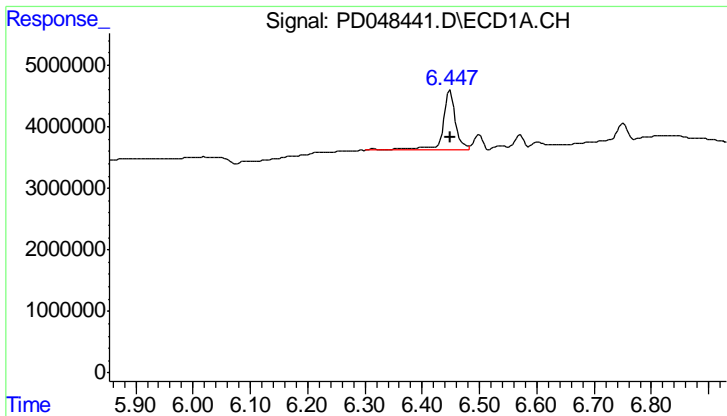
#19 Endosulfan Sulfate
 R.T.: 7.200 min
 Delta R.T.: -0.048 min
 Response: 320423198
 Conc: 15.91 ng/ml



#20 Methoxychlor
 R.T.: 6.751 min
 Delta R.T.: -0.066 min
 Response: 3416128
 Conc: 4.51 ng/ml

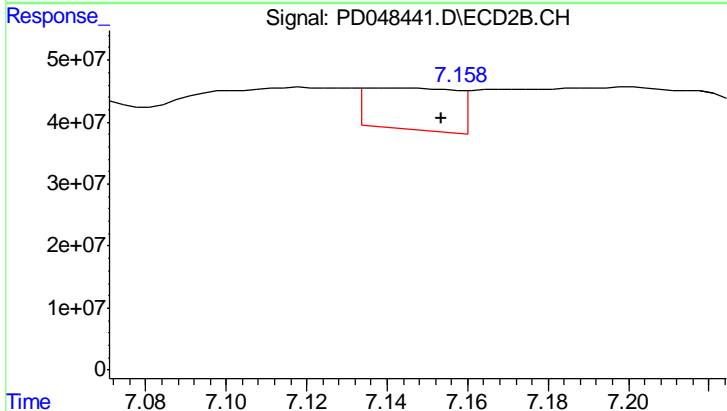


#20 Methoxychlor
 R.T.: 7.582 min
 Delta R.T.: 0.013 min
 Response: 30749036
 Conc: 3.63 ng/ml

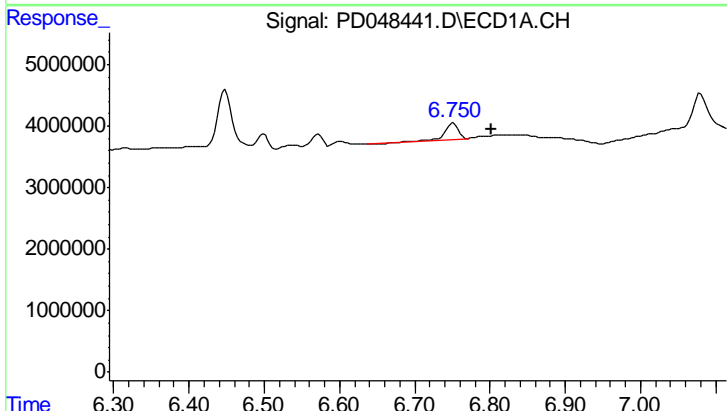


#24 Toxaphene-3
 R.T.: 6.448 min
 Delta R.T.: -0.001 min
 Response: 14430025
 Conc: 506.73 ng/ml

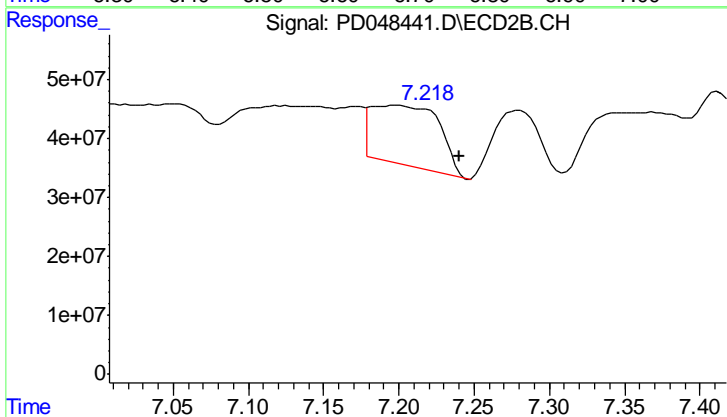
Instrument :
 ECD_D
 ClientSampled :
 PBLK47



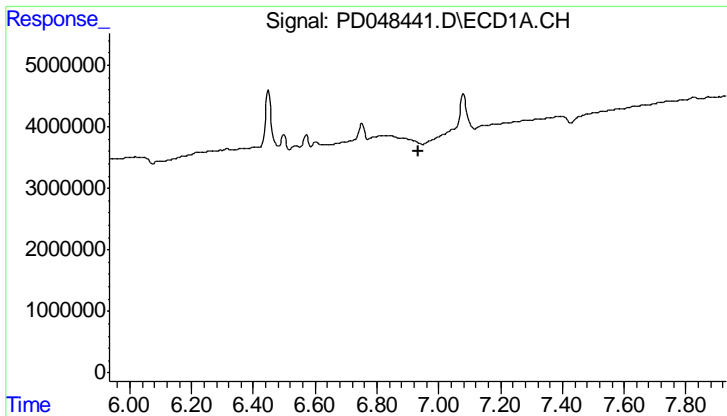
#24 Toxaphene-3
 R.T.: 7.142 min
 Delta R.T.: -0.012 min
 Response: 104622944
 Conc: 204.65 ng/ml



#25 Toxaphene-4
 R.T.: 6.751 min
 Delta R.T.: -0.051 min
 Response: 3416128
 Conc: 144.47 ng/ml



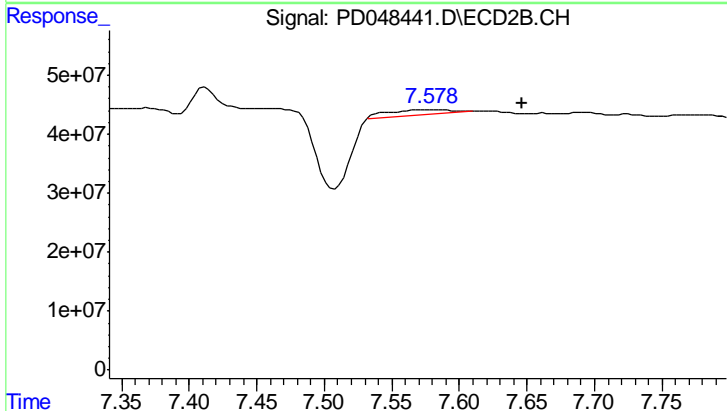
#25 Toxaphene-4
 R.T.: 7.200 min
 Delta R.T.: -0.041 min
 Response: 320423198
 Conc: 1055.06 ng/ml



#26 Toxaphene-5

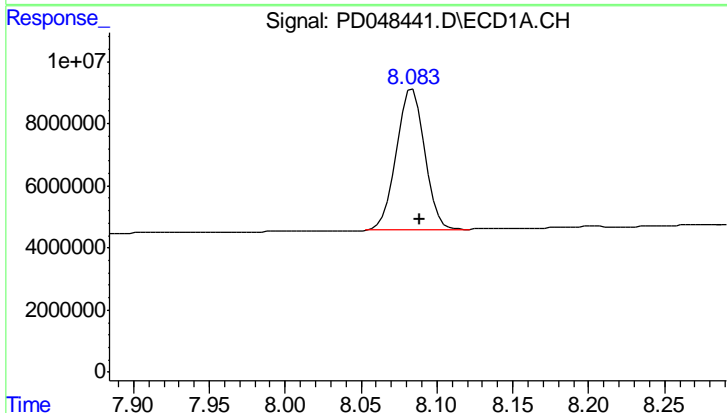
R.T.: 0.000 min
 Exp R.T.: 6.934 min
 Response: 0
 Conc: N.D.

Instrument :
 ECD_D
 ClientSampleId :
 PBLK47



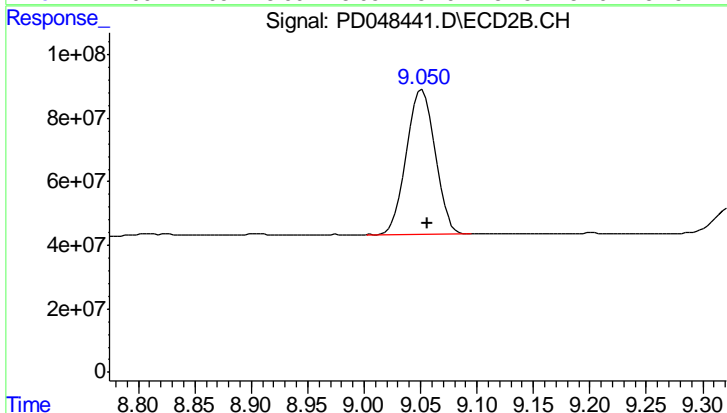
#26 Toxaphene-5

R.T.: 7.582 min
 Delta R.T.: -0.065 min
 Response: 30749036
 Conc: 153.26 ng/ml



#27 Decachlorobiphenyl

R.T.: 8.084 min
 Delta R.T.: -0.005 min
 Response: 58801238
 Conc: 43.99 ng/ml



#27 Decachlorobiphenyl

R.T.: 9.051 min
 Delta R.T.: -0.004 min
 Response: 798079347
 Conc: 45.04 ng/ml