

Data Path : Z:\pestpcbsrv\HPCHEM1\ECD\_D\Data\PD071723\  
 Data File : PD076865.D  
 Signal(s) : Signal #1: ECD1A.ch Signal #2: ECD2B.ch  
 Acq On : 18 Jul 2023 01:20  
 Operator : AR\AJ  
 Sample : 03504-17  
 Misc :  
 ALS Vial : 56 Sample Multiplier: 1

**Instrument :**  
 ECD\_D  
**ClientSampleId :**  
 A46S3

**Manual Integrations**  
**APPROVED**

Reviewed By :Abdul Mirza 07/19/2023  
 Supervised By :Ankita Jodhani 07/19/2023

Integration File signal 1: autoint1.e  
 Integration File signal 2: autoint2.e  
 Quant Time: Jul 18 13:25:01 2023  
 Quant Method : Z:\pestpcbsrv\HPCHEM1\ECD\_D\Method\PD071423CLP.M  
 Quant Title : GC Extractables  
 QLast Update : Fri Jul 14 14:58:34 2023  
 Response via : Initial Calibration  
 Integrator: ChemStation

Volume Inj. : 1 µl  
 Signal #1 Phase : ZB-MR1 Signal #2 Phase: ZB-MR2  
 Signal #1 Info : 30M x 0.32mm x0.5 Signal #2 Info : 30M x 0.32mm x 0.25µm

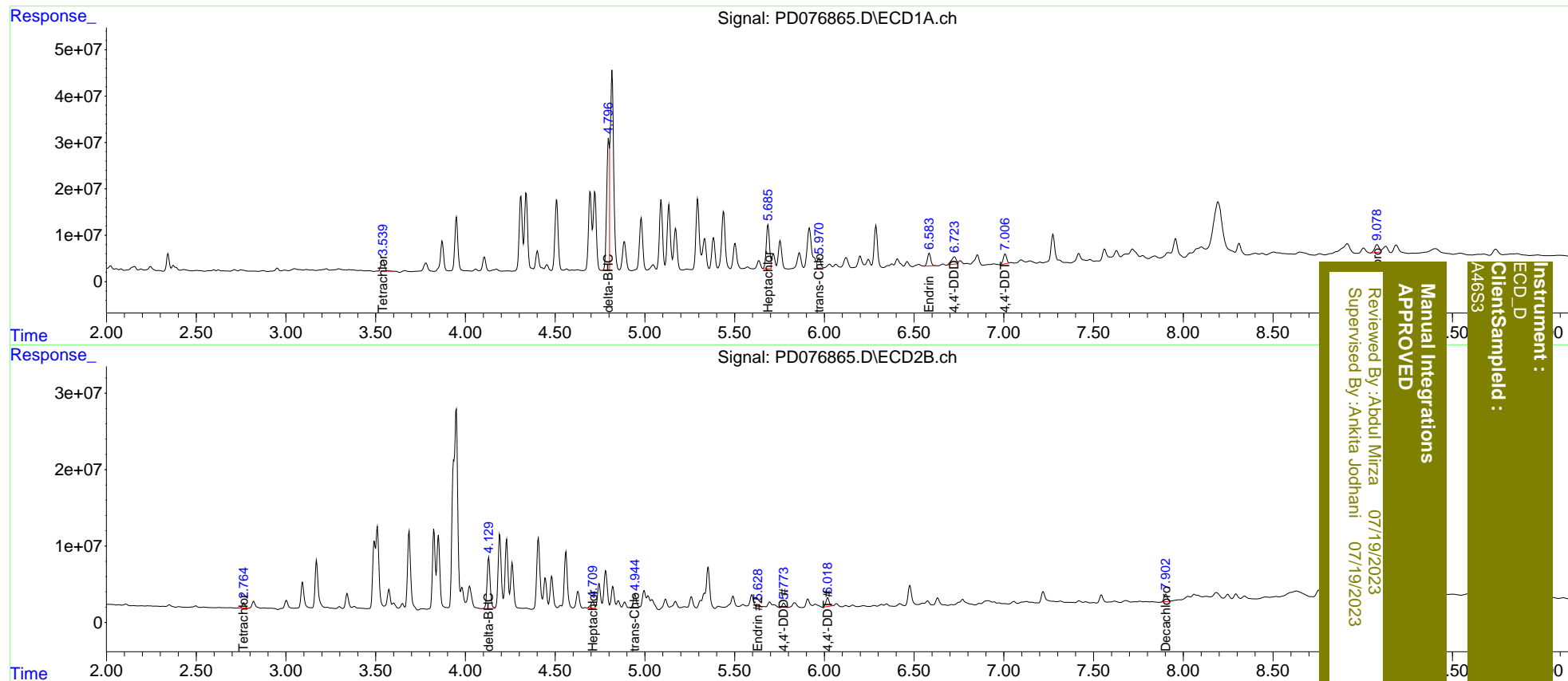
Compound	RT#1	RT#2	Resp#1	Resp#2	ng/ml	ng/ml
-----						
System Monitoring Compounds						
1) SA Tetrachlo...	3.540	2.765	32992783	7515971	15.509	7.041 #
27) SA Decachlor...	9.080	7.903	29527875	12720124	12.154	11.866
Target Compounds						
7) B delta-BHC	4.796	4.130	336.2E6	80049437	100.270m	52.447 #
8) B Heptachlo...	5.685	4.709	122.9E6	11730025	41.019m	8.338m#
10) B trans-Chl...	5.970	4.944	27868072	19935193	9.063m	14.742m#
14) MA Endrin	6.584	5.628	35285841	4010325	13.688	3.243m#
16) A 4,4'-DDD	6.725	5.774	29684206	5745756	13.137	6.063 #
17) MA 4,4'-DDT	7.006	6.019	28004238	13770319	12.542m	14.700
-----						

(f)=RT Delta > 1/2 Window (#)=Amounts differ by > 25% (m)=manual int.

Data Path : Z:\pestpcbsrv\HPCHEM1\ECD\_D\Data\PD071723\  
 Data File : PD076865.D  
 Signal(s) : Signal #1: ECD1A.ch Signal #2: ECD2B.ch  
 Acq On : 18 Jul 2023 01:20  
 Operator : AR\AJ  
 Sample : 03504-17  
 Misc :  
 ALS Vial : 56 Sample Multiplier: 1

Integration File signal 1: autoint1.e  
 Integration File signal 2: autoint2.e  
 Quant Time: Jul 18 13:25:01 2023  
 Quant Method : Z:\pestpcbsrv\HPCHEM1\ECD\_D\Method\PD071423CLP.M  
 Quant Title : GC Extractables  
 QLast Update : Fri Jul 14 14:58:34 2023  
 Response via : Initial Calibration  
 Integrator: ChemStation

Volume Inj. : 1 µl  
 Signal #1 Phase : ZB-MR1 Signal #2 Phase: ZB-MR2  
 Signal #1 Info : 30M x 0.32mm x0.5 Signal #2 Info : 30M x 0.32mm x 0.25µm



Instrument : ECD\_D  
 ClientSampled : A46S3  
 Manual Integrations APPROVED  
 Reviewed By :Abdul Mirza 07/19/2023  
 Supervised By :Ankita Jodhani 07/19/2023