

Data Path : Z:\pestpcbsrv\HPCHEM1\ECD_D\Data\PD071724\
 Data File : PD083969.D
 Signal(s) : Signal #1: ECD1A.ch Signal #2: ECD2B.ch
 Acq On : 16 Jul 2024 11:41
 Operator : AR\AJ
 Sample : P3250-07
 Misc :
 ALS Vial : 7 Sample Multiplier: 1

Instrument :
 ECD_D
 ClientSampleId :

Integration File signal 1: autoint1.e
 Integration File signal 2: autoint2.e
 Quant Time: Jul 17 00:00:21 2024
 Quant Method : Z:\pestpcbsrv\HPCHEM1\ECD_D\Method\PD062624CLP.M
 Quant Title : GC Extractables
 QLast Update : Thu Jun 27 04:33:52 2024
 Response via : Initial Calibration
 Integrator: ChemStation

Volume Inj. : 1 µl
 Signal #1 Phase : ZB-MR1 Signal #2 Phase: ZB-MR2
 Signal #1 Info : 30M x 0.32mm x0.5 Signal #2 Info : 30M x 0.32mm x 0.25µm

Compound	RT#1	RT#2	Resp#1	Resp#2	ng/ml	ng/ml
----------	------	------	--------	--------	-------	-------

System Monitoring Compounds

Target Compounds

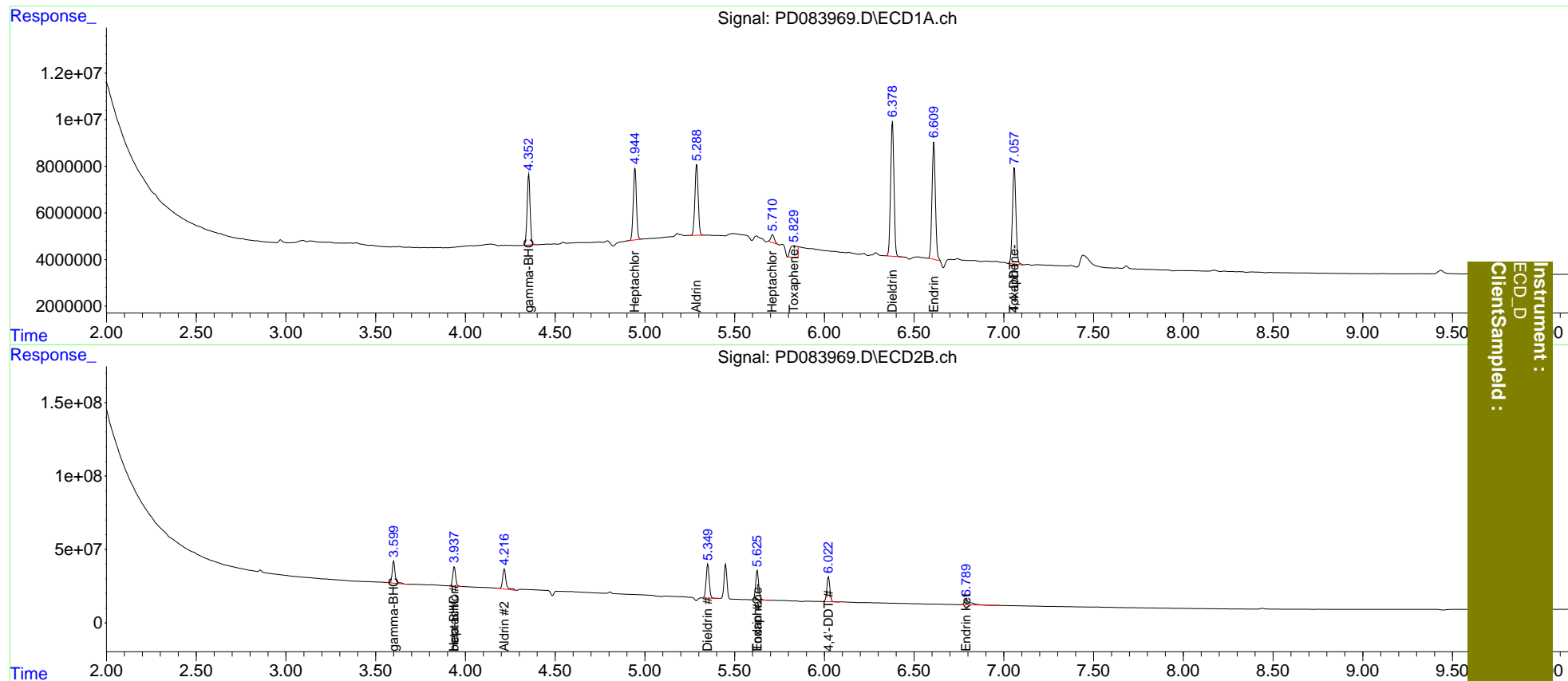
3) MA	gamma-BHC...	4.353	3.600	34640580	166.8E6	18.770	19.482
4) MA	Heptachlor	4.945	3.938	37358783	146.1E6	18.636	17.346
5) MB	Aldrin	5.289	4.217	38797100	182.9E6	19.100	21.685
6) B	beta-BHC	0.000	3.938f	0	146.1E6	N.D.	38.523
8) B	Heptachlo...	5.712	0.000	4571553	0	2.348	N.D. #
13) MA	Dieldrin	6.380	5.351	75424859	277.4E6	37.667	35.826
14) MA	Endrin	6.610	5.626	66019815	242.9E6	39.916	36.672
17) MA	4,4'-DDT	7.059	6.023	55829564	198.7E6	36.920	33.983
21) B	Endrin ke...	0.000	6.790f	0	80272278	N.D.	11.427
22)	Toxaphene-1	5.829f	0.000	13654841	0	2572.679	N.D. #
23)	Toxaphene-2	0.000	5.626f	0	242.9E6	N.D.	6017.988
24)	Toxaphene-3	7.059f	0.000	55829564	0	1170.717	N.D. #

(f)=RT Delta > 1/2 Window (#)=Amounts differ by > 25% (m)=manual int.

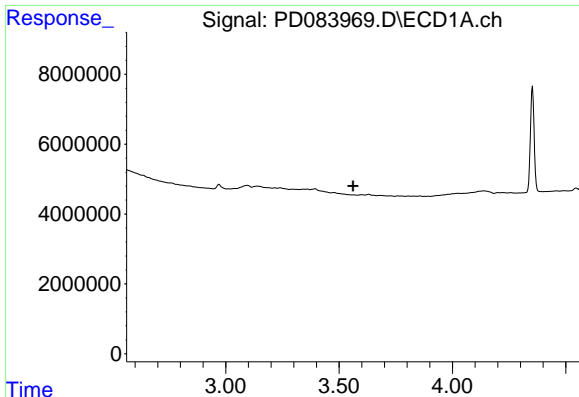
Data Path : Z:\pestpcbsrv\HPCHEM1\ECD_D\Data\PD071724\
 Data File : PD083969.D
 Signal(s) : Signal #1: ECD1A.ch Signal #2: ECD2B.ch
 Acq On : 16 Jul 2024 11:41
 Operator : AR\AJ
 Sample : P3250-07
 Misc :
 ALS Vial : 7 Sample Multiplier: 1

Integration File signal 1: autoint1.e
 Integration File signal 2: autoint2.e
 Quant Time: Jul 17 00:00:21 2024
 Quant Method : Z:\pestpcbsrv\HPCHEM1\ECD_D\Method\PD062624CLP.M
 Quant Title : GC Extractables
 QLast Update : Thu Jun 27 04:33:52 2024
 Response via : Initial Calibration
 Integrator: ChemStation

Volume Inj. : 1 µl
 Signal #1 Phase : ZB-MR1 Signal #2 Phase: ZB-MR2
 Signal #1 Info : 30M x 0.32mm x0.5 Signal #2 Info : 30M x 0.32mm x 0.25µm



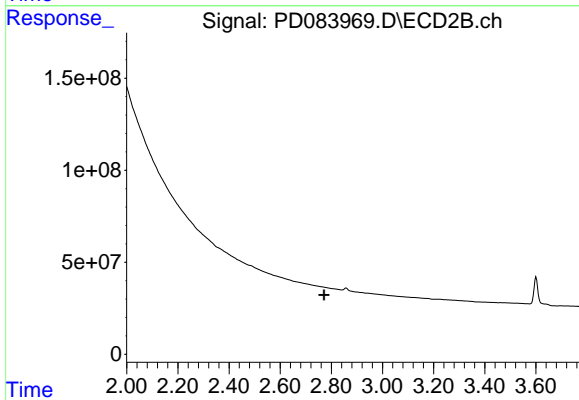
Instrument : ECD_D
 Client/SampleID :



#1 Tetrachloro-m-xylene

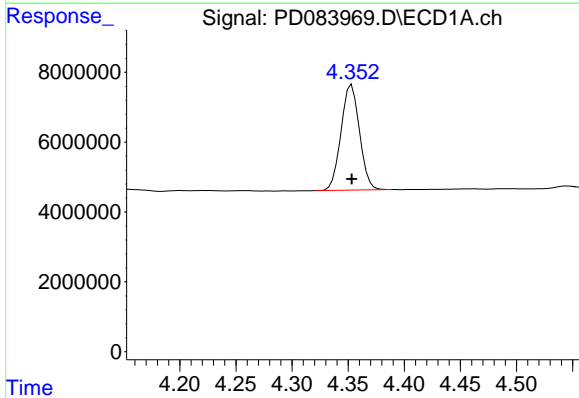
R.T.: 0.000 min
 Exp R.T. : 3.562 min
 Response: 0
 Conc: N.D.

Instrument :
 ECD_D
 ClientSampleId :



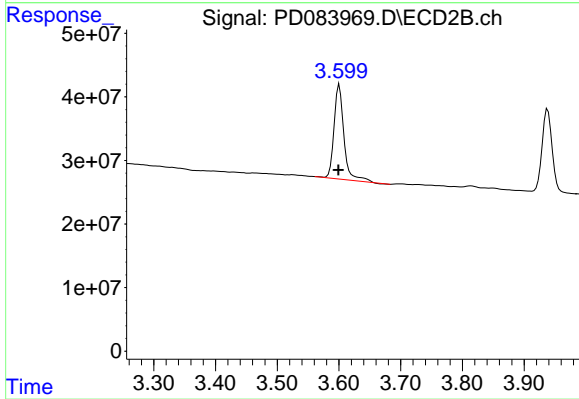
#1 Tetrachloro-m-xylene

R.T.: 0.000 min
 Exp R.T. : 2.772 min
 Response: 0
 Conc: N.D.



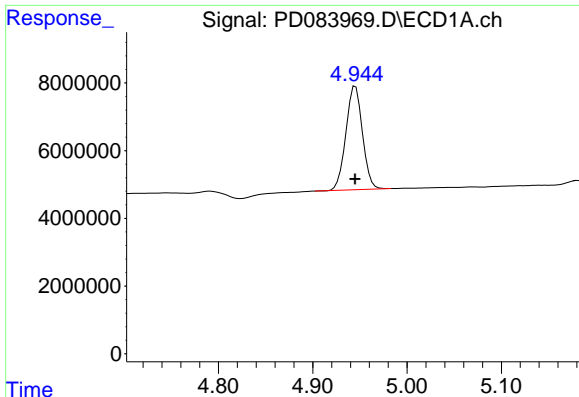
#3 gamma-BHC (Lindane)

R.T.: 4.353 min
 Delta R.T.: 0.000 min
 Response: 34640580
 Conc: 18.77 ng/ml



#3 gamma-BHC (Lindane)

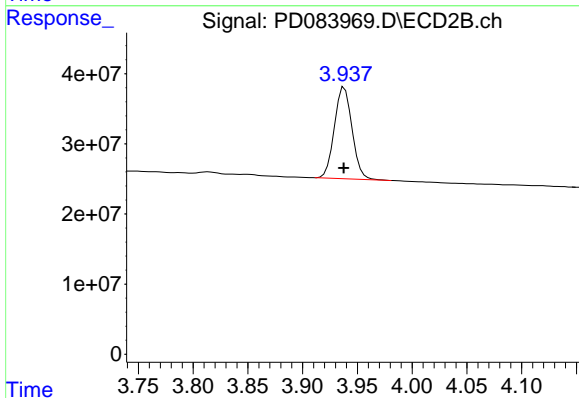
R.T.: 3.600 min
 Delta R.T.: 0.001 min
 Response: 166776086
 Conc: 19.48 ng/ml



#4 Heptachlor

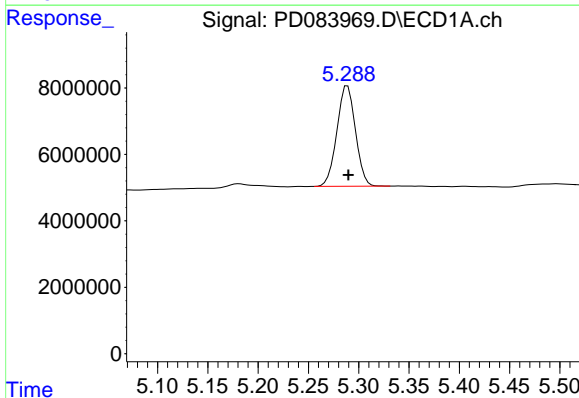
R.T.: 4.945 min
 Delta R.T.: 0.000 min
 Response: 37358783
 Conc: 18.64 ng/ml

Instrument :
 ECD_D
 ClientSampleId :



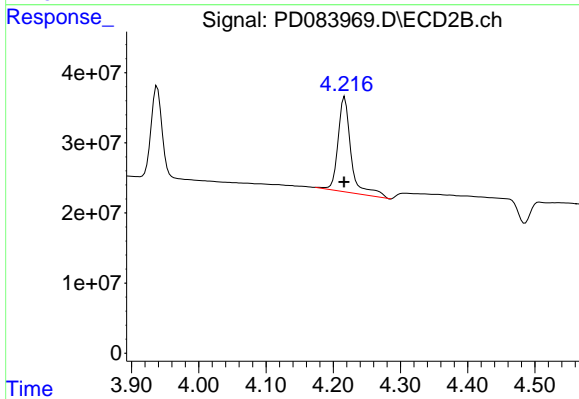
#4 Heptachlor

R.T.: 3.938 min
 Delta R.T.: 0.000 min
 Response: 146054286
 Conc: 17.35 ng/ml



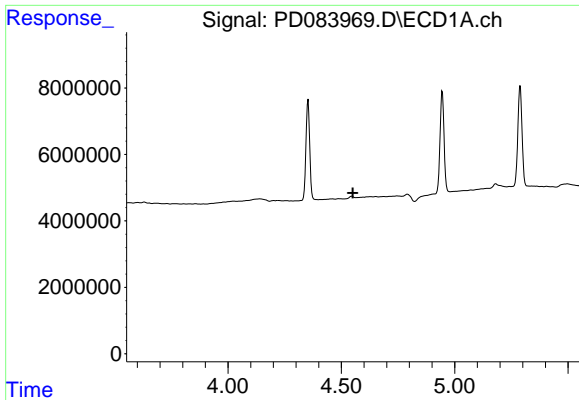
#5 Aldrin

R.T.: 5.289 min
 Delta R.T.: 0.000 min
 Response: 38797100
 Conc: 19.10 ng/ml



#5 Aldrin

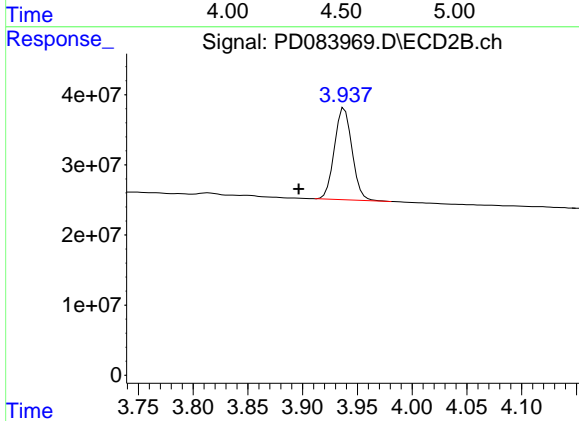
R.T.: 4.217 min
 Delta R.T.: 0.000 min
 Response: 182946177
 Conc: 21.68 ng/ml



#6 beta-BHC

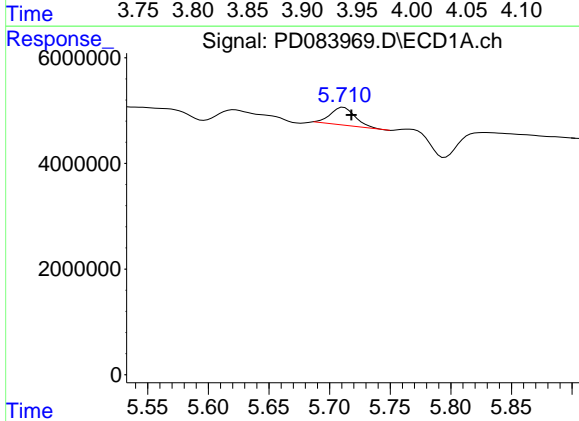
R.T.: 0.000 min
 Exp R.T.: 4.551 min
 Response: 0
 Conc: N.D.

Instrument :
 ECD_D
 ClientSampleId :



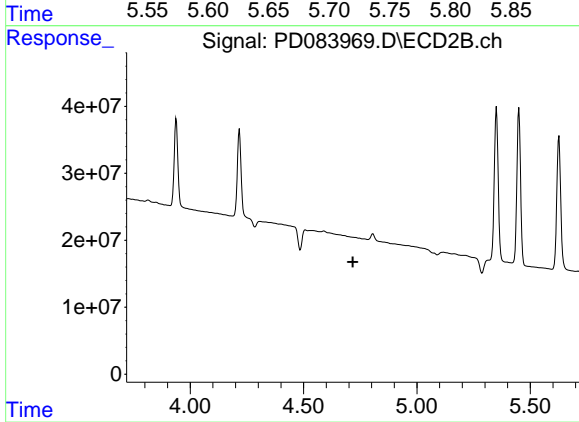
#6 beta-BHC

R.T.: 3.938 min
 Delta R.T.: 0.042 min
 Response: 146054286
 Conc: 38.52 ng/ml



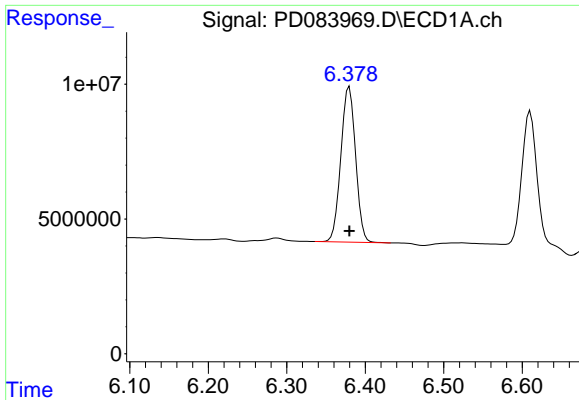
#8 Heptachlor epoxide

R.T.: 5.712 min
 Delta R.T.: -0.006 min
 Response: 4571553
 Conc: 2.35 ng/ml



#8 Heptachlor epoxide

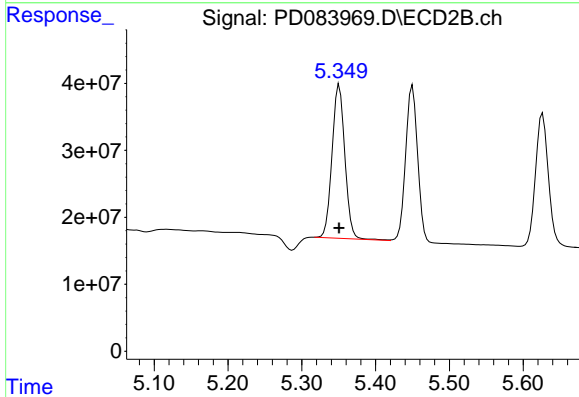
R.T.: 0.000 min
 Exp R.T.: 4.718 min
 Response: 0
 Conc: N.D.



#13 Dieldrin

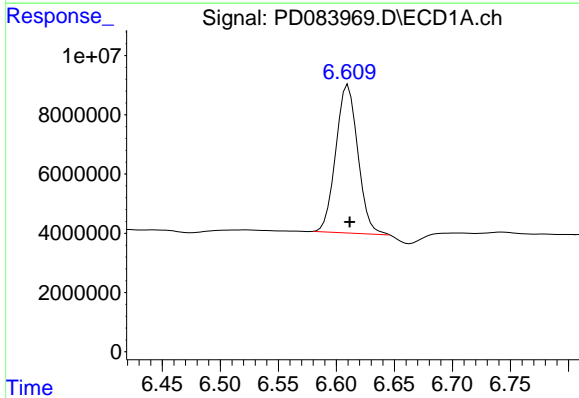
R.T.: 6.380 min
 Delta R.T.: 0.000 min
 Response: 75424859
 Conc: 37.67 ng/ml

Instrument :
 ECD_D
 ClientSampleId :



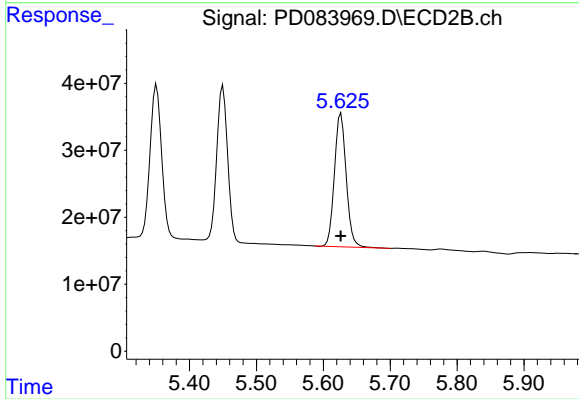
#13 Dieldrin

R.T.: 5.351 min
 Delta R.T.: 0.000 min
 Response: 277359338
 Conc: 35.83 ng/ml



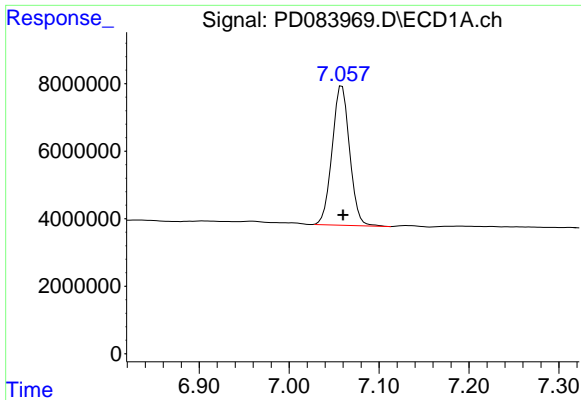
#14 Endrin

R.T.: 6.610 min
 Delta R.T.: -0.001 min
 Response: 66019815
 Conc: 39.92 ng/ml



#14 Endrin

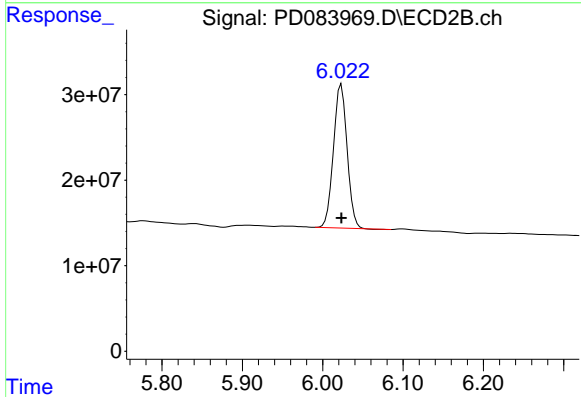
R.T.: 5.626 min
 Delta R.T.: 0.000 min
 Response: 242861942
 Conc: 36.67 ng/ml



#17 4,4'-DDT

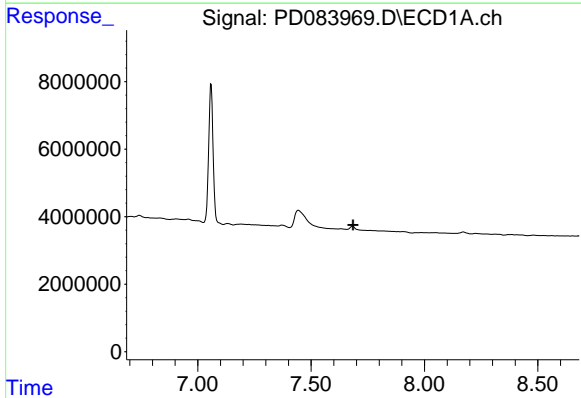
R.T.: 7.059 min
 Delta R.T.: -0.001 min
 Response: 55829564
 Conc: 36.92 ng/ml

Instrument :
 ECD_D
 ClientSampleId :



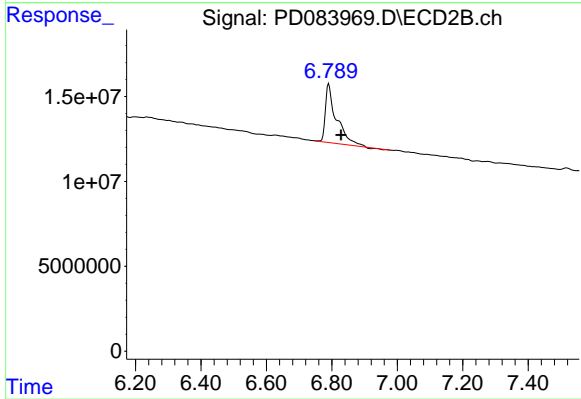
#17 4,4'-DDT

R.T.: 6.023 min
 Delta R.T.: 0.000 min
 Response: 198676863
 Conc: 33.98 ng/ml



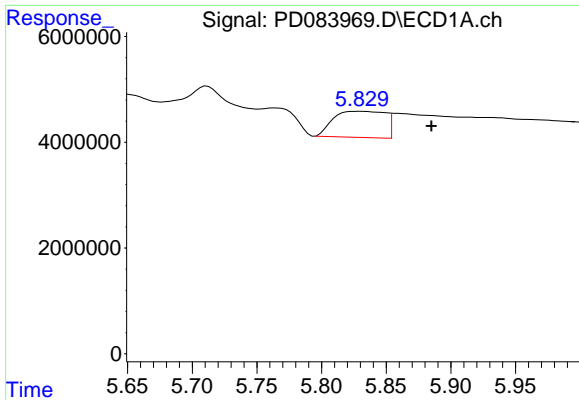
#21 Endrin ketone

R.T.: 0.000 min
 Exp R.T. : 7.685 min
 Response: 0
 Conc: N.D.



#21 Endrin ketone

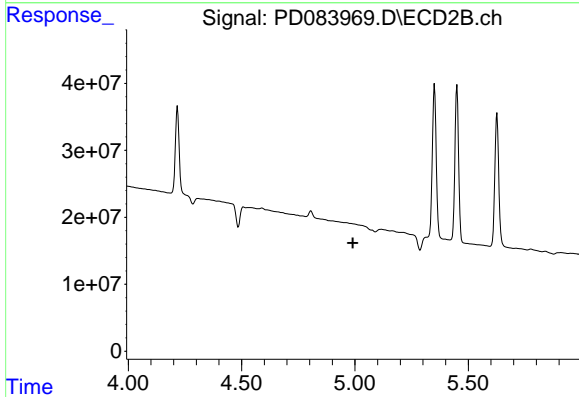
R.T.: 6.790 min
 Delta R.T.: -0.038 min
 Response: 80272278
 Conc: 11.43 ng/ml



#22 Toxaphene-1

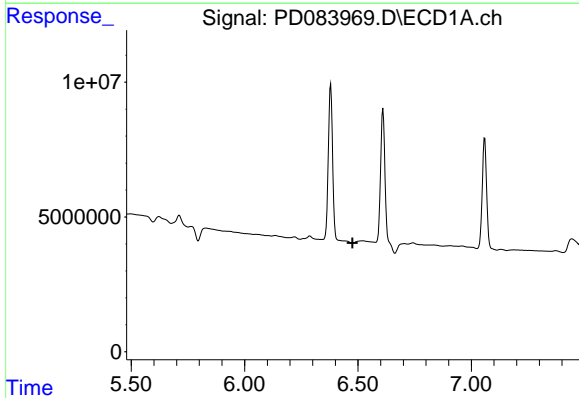
R.T.: 5.829 min
 Delta R.T.: -0.056 min
 Response: 13654841
 Conc: 2572.68 ng/ml

Instrument :
 ECD_D
 ClientSampleId :



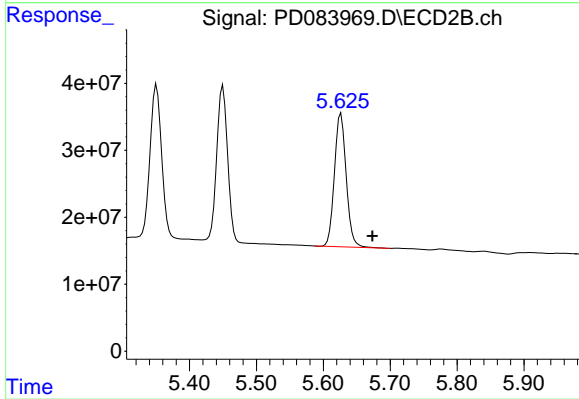
#22 Toxaphene-1

R.T.: 0.000 min
 Exp R.T. : 4.991 min
 Response: 0
 Conc: N.D.



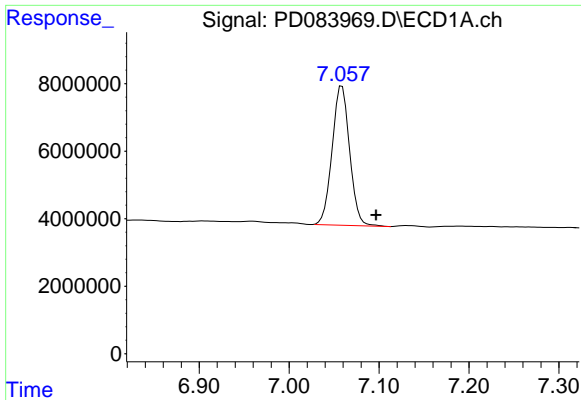
#23 Toxaphene-2

R.T.: 0.000 min
 Exp R.T. : 6.476 min
 Response: 0
 Conc: N.D.



#23 Toxaphene-2

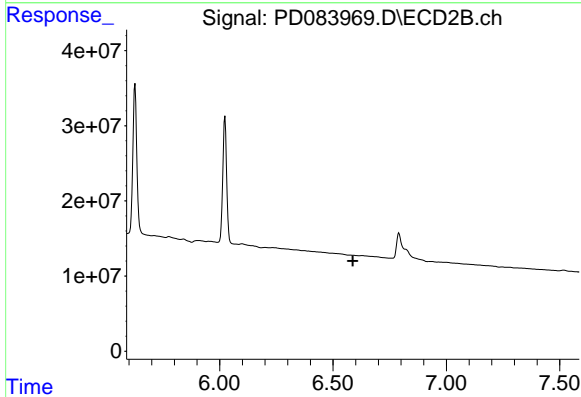
R.T.: 5.626 min
 Delta R.T.: -0.047 min
 Response: 242861942
 Conc: 6017.99 ng/ml



#24 Toxaphene-3

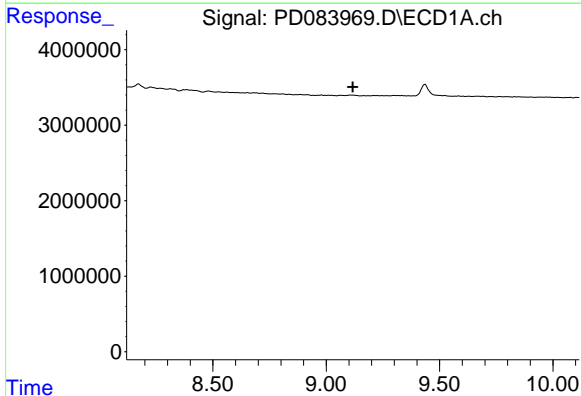
R.T.: 7.059 min
 Delta R.T.: -0.038 min
 Response: 55829564
 Conc: 1170.72 ng/m

Instrument :
 ECD_D
 ClientSampleId :



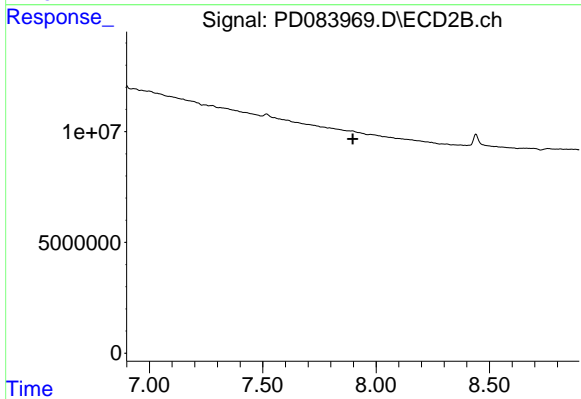
#24 Toxaphene-3

R.T.: 0.000 min
 Exp R.T. : 6.587 min
 Response: 0
 Conc: N.D.



#27 Decachlorobiphenyl

R.T.: 0.000 min
 Exp R.T. : 9.117 min
 Response: 0
 Conc: N.D.



#27 Decachlorobiphenyl

R.T.: 0.000 min
 Exp R.T. : 7.897 min
 Response: 0
 Conc: N.D.