

Data Path : Z:\pestpcbsrv\HPCHEM1\ECD_D\Data\PD071819\
 Data File : PD053959.D
 Signal(s) : Signal #1: ECD1A.CH Signal #2: ECD2B.CH
 Acq On : 18 Jul 2019 12:09
 Operator : SM\AJ
 Sample : TOXAPH101
 Misc :
 ALS Vial : 4 Sample Multiplier: 1

Instrument :
 ECD_D
ClientSampled :
 TOXAPH101

Manual Integrations
APPROVED
 Ankita
 7/19/2019 12:02:51 PM

Integration File signal 1: autoint1.e
 Integration File signal 2: autoint2.e
 Quant Time: Jul 19 06:12:19 2019
 Quant Method : Z:\pestpcbsrv\HPCHEM1\ECD_D\Method\PD071819CLP.M
 Quant Title : GC Extractables
 QLast Update : Fri Jul 19 06:04:29 2019
 Response via : Initial Calibration
 Integrator: ChemStation 6890 Scale Mode: Large solvent peaks clipped

Volume Inj. : 1 µl
 Signal #1 Phase : ZB-MR2 Signal #2 Phase: ZB-MR1
 Signal #1 Info : 30M x 0.32mm x0.2 Signal #2 Info : 30M x 0.32mm x 0.50µm

Compound	RT#1	RT#2	Resp#1	Resp#2	ng/ml	ng/ml

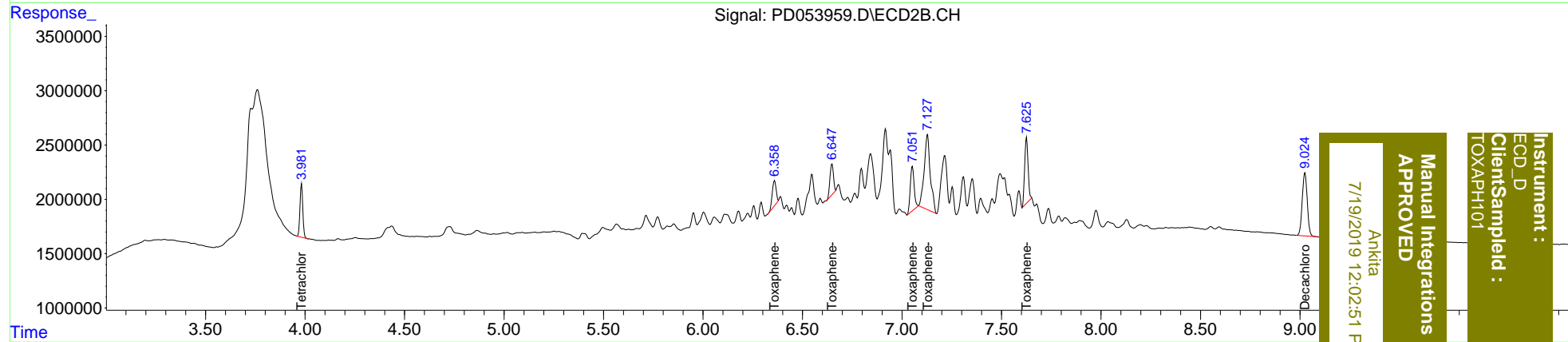
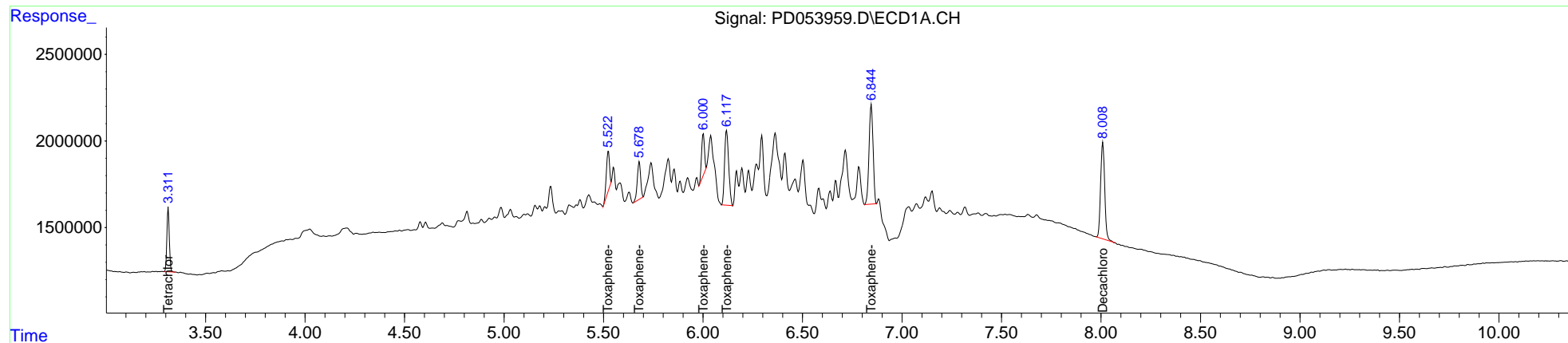
System Monitoring Compounds						
1) SA Tetrachlo...	3.313	3.983	3205776	4770214	5.073	5.029
27) SA Decachlor...	8.009	9.025	7876899	10258661	10.756	10.654
Target Compounds						
22) Toxaphene-1	5.525	6.360	2475266	3247527	501.922	518.142
23) Toxaphene-2	5.680	6.649	2525339	3446191	509.435	472.289
24) Toxaphene-3	6.002	7.051	2398504	5568830	514.990	502.757m
25) Toxaphene-4	6.119	7.128	6197525	14915487	472.977	490.241
26) Toxaphene-5	6.846	7.626	8013634	7386634	498.332	513.640

(f)=RT Delta > 1/2 Window (#)=Amounts differ by > 25% (m)=manual int.

Data Path : Z:\pestpcbsrv\HPCHEM1\ECD_D\Data\PD071819\
 Data File : PD053959.D
 Signal(s) : Signal #1: ECD1A.CH Signal #2: ECD2B.CH
 Acq On : 18 Jul 2019 12:09
 Operator : SM\AJ
 Sample : TOXAPH101
 Misc :
 ALS Vial : 4 Sample Multiplier: 1

Integration File signal 1: autoint1.e
 Integration File signal 2: autoint2.e
 Quant Time: Jul 19 06:12:19 2019
 Quant Method : Z:\pestpcbsrv\HPCHEM1\ECD_D\Method\PD071819CLP.M
 Quant Title : GC Extractables
 QLast Update : Fri Jul 19 06:04:29 2019
 Response via : Initial Calibration
 Integrator: ChemStation 6890 Scale Mode: Large solvent peaks clipped

Volume Inj. : 1 µl
 Signal #1 Phase : ZB-MR2 Signal #2 Phase: ZB-MR1
 Signal #1 Info : 30M x 0.32mm x0.2 Signal #2 Info : 30M x 0.32mm x 0.50µm



Instrument : ECD_D
 Client Sample Id : TOXAPH101
 Manual Integrations APPROVED
 Ankitia
 7/19/2019 12:02:51 PM