

Data Path : Z:\pestpcbsrv\HPCHEM1\ECD_D\Data\PD071824\
 Data File : PD083995.D
 Signal(s) : Signal #1: ECD1A.ch Signal #2: ECD2B.ch
 Acq On : 19 Jul 2024 03:47
 Operator : AR\AJ
 Sample : P3244-07
 Misc :
 ALS Vial : 7 Sample Multiplier: 1

Instrument :
 ECD_D
 ClientSampleId :

Integration File signal 1: autoint1.e
 Integration File signal 2: autoint2.e
 Quant Time: Jul 19 04:14:23 2024
 Quant Method : Z:\pestpcbsrv\HPCHEM1\ECD_D\Method\PD062624CLP.M
 Quant Title : GC Extractables
 QLast Update : Thu Jun 27 04:33:52 2024
 Response via : Initial Calibration
 Integrator: ChemStation

Volume Inj. : 1 µl
 Signal #1 Phase : ZB-MR2 Signal #2 Phase: ZB-MR2
 Signal #1 Info : 30M x 0.32mm x0.5 Signal #2 Info : 30M x 0.32mm x 0.25µm

Compound	RT#1	RT#2	Resp#1	Resp#2	ng/ml	ng/ml

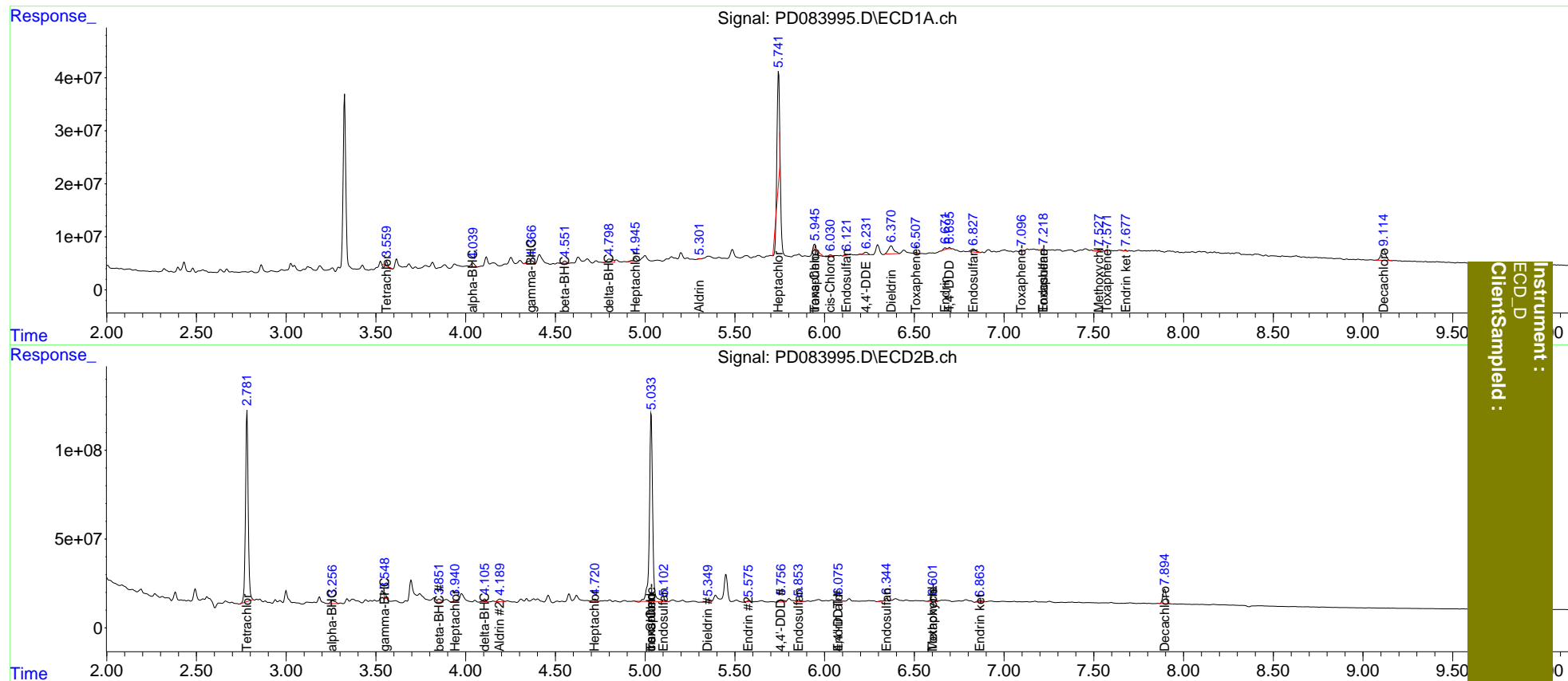
System Monitoring Compounds						
1) SA Tetrachlo...	3.560	2.782	2733222	1116.7E6	2.692	206.042 #
2) SA Decachlor...	9.115	7.895	37658423	105.8E6	17.674	15.840
Target Compounds						
2) A alpha-BHC	4.041	3.257	10222437	32681164	5.403	3.625 #
3) MA gamma-BHC...	4.367	3.550f	10848299	23925586	5.878	2.795 #
4) MA Heptachlor	4.946	3.941	9006467	7505456	4.493	0.891 #
5) MB Aldrin	5.304	4.191f	651517	24251673	0.321	2.875 #
6) B beta-BHC	4.552	3.852f	4436361	25975839	5.282	6.851 #
7) B delta-BHC	4.799	4.106	13581729	14181595	6.407	1.554 #
8) B Heptachlo...	5.744	4.721	154.4E6	21570746	79.327	2.746 #
9) A Endosulfan I	6.124	5.104	1608618	12125194	0.869	1.745 #
10) B trans-Chl...	5.945	5.034f	424720	1330.9E6	0.223	172.244 #
11) B cis-Chlor...	6.032	5.034	2066718	1330.9E6	1.056	169.086 #
12) B 4,4'-DDE	6.232	0.000	7277209	0	3.674	N.D. #
13) MA Dieldrin	6.371	5.351	31362407	15594622	15.662	2.014 #
14) MA Endrin	6.672f	5.578f	3029533	4022014	1.832	0.607 #
15) B Endosulfa...	6.828	5.855f	11214989	12656972	6.152	1.897 #
16) A 4,4'-DDD	6.697f	5.758	1798915	23261041	1.247	3.905 #
17) MA 4,4'-DDT	7.067	6.077f	-113503	16678493	N.D.	2.853
18) B Endrin al...	6.944	6.077	-1897768	16678493	N.D.	3.325
19) B Endosulfa...	7.220	6.345	1925882	17168380	1.087	2.643 #
20) A Methoxychlor	7.529	6.602	444974	21678076	0.500	7.337 #
21) B Endrin ke...	7.678	6.865f	858101	15229966	0.440	2.168 #
22) Toxaphene-1	5.945f	5.034f	424720	1330.9E6	80.021	34836.469 #
23) Toxaphene-2	6.508	0.000	2053074	0	126.436	N.D. #
24) Toxaphene-3	7.098	6.602	1245354	21678076	26.114	165.580 #
25) Toxaphene-4	7.220	0.000	1925882	0	53.264	N.D. #
26) Toxaphene-5	7.574f	0.000	987892	0	37.220	N.D. #

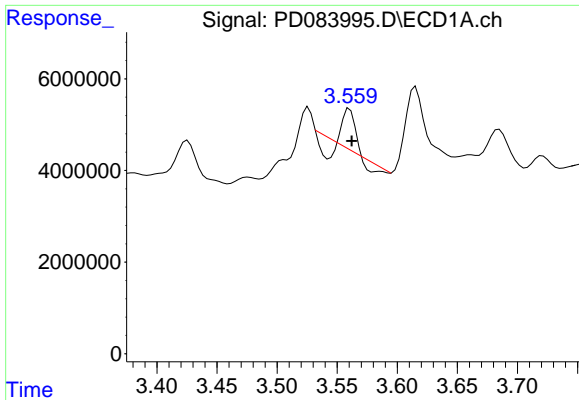
(f)=RT Delta > 1/2 Window (#)=Amounts differ by > 25% (m)=manual int.

Data Path : Z:\pestpcbsrv\HPCHEM1\ECD_D\Data\PD071824\
 Data File : PD083995.D
 Signal(s) : Signal #1: ECD1A.ch Signal #2: ECD2B.ch
 Acq On : 19 Jul 2024 03:47
 Operator : AR\AJ
 Sample : P3244-07
 Misc :
 ALS Vial : 7 Sample Multiplier: 1

Integration File signal 1: autoint1.e
 Integration File signal 2: autoint2.e
 Quant Time: Jul 19 04:14:23 2024
 Quant Method : Z:\pestpcbsrv\HPCHEM1\ECD_D\Method\PD062624CLP.M
 Quant Title : GC Extractables
 QLast Update : Thu Jun 27 04:33:52 2024
 Response via : Initial Calibration
 Integrator: ChemStation

Volume Inj. : 1 µl
 Signal #1 Phase : ZB-MR1 Signal #2 Phase: ZB-MR2
 Signal #1 Info : 30M x 0.32mm x0.5 Signal #2 Info : 30M x 0.32mm x 0.25µm

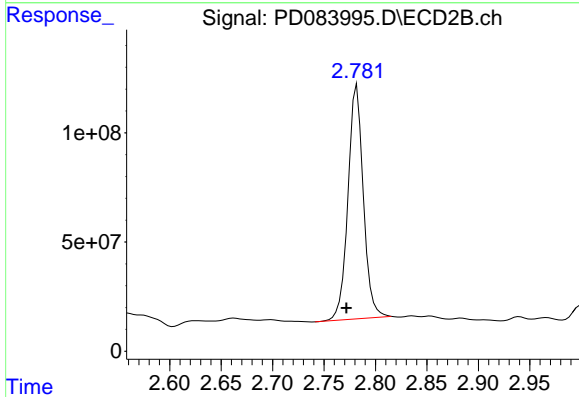




#1 Tetrachloro-m-xylene

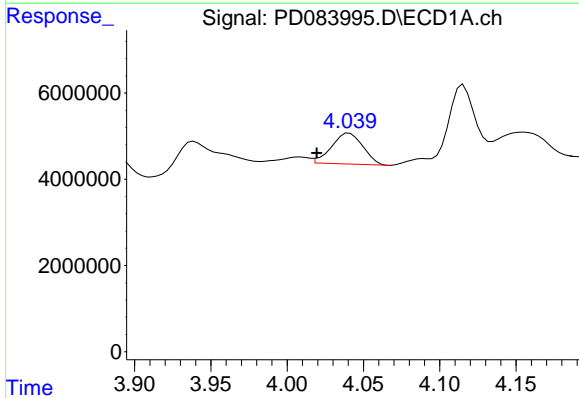
R.T.: 3.560 min
 Delta R.T.: -0.002 min
 Response: 2733222
 Conc: 2.69 ng/ml

Instrument :
 ECD_D
 ClientSampleId :



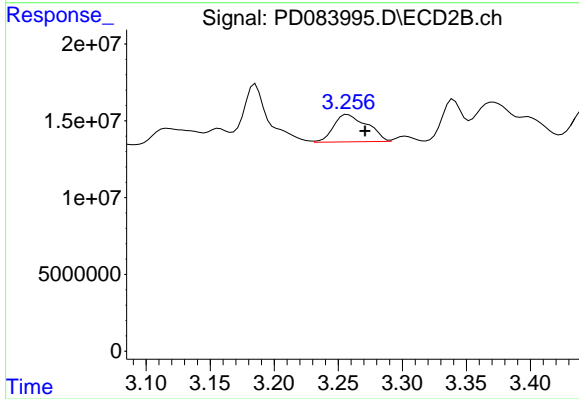
#1 Tetrachloro-m-xylene

R.T.: 2.782 min
 Delta R.T.: 0.010 min
 Response: 1116673752
 Conc: 206.04 ng/ml



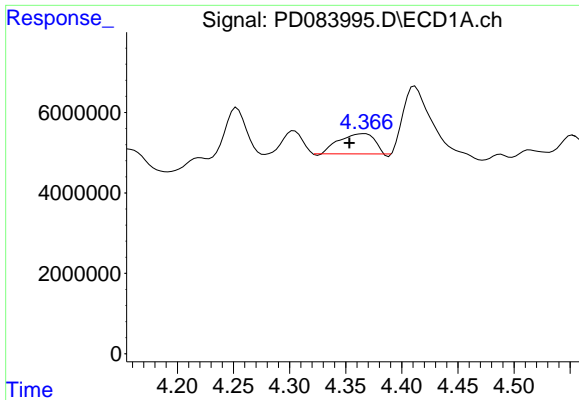
#2 alpha-BHC

R.T.: 4.041 min
 Delta R.T.: 0.021 min
 Response: 10222437
 Conc: 5.40 ng/ml



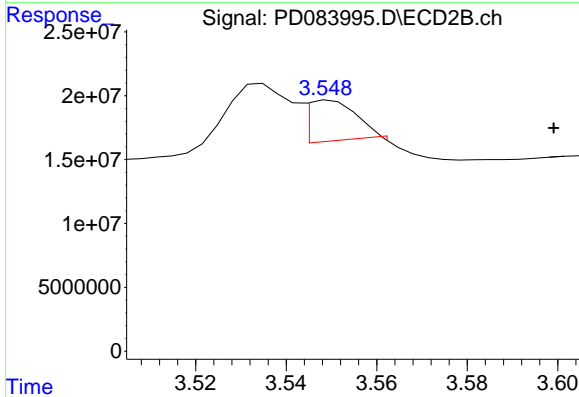
#2 alpha-BHC

R.T.: 3.257 min
 Delta R.T.: -0.014 min
 Response: 32681164
 Conc: 3.63 ng/ml

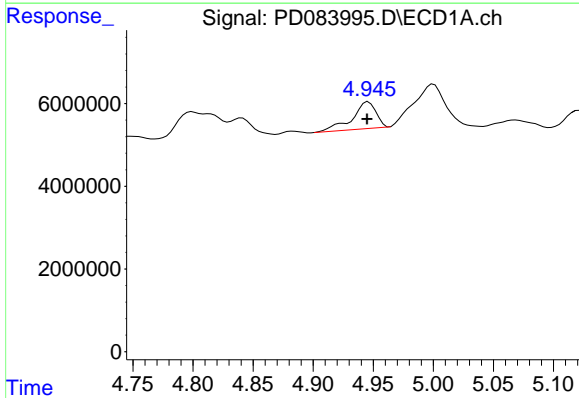


#3 gamma-BHC (Lindane)
 R.T.: 4.367 min
 Delta R.T.: 0.014 min
 Response: 10848299
 Conc: 5.88 ng/ml

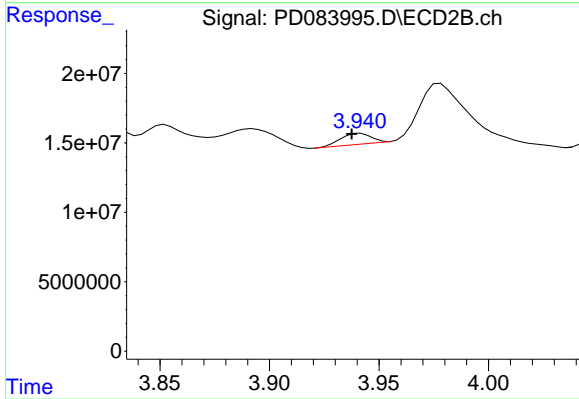
Instrument :
 ECD_D
 ClientSampleId :



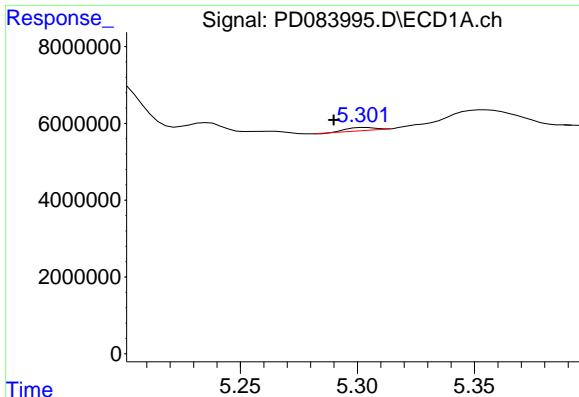
#3 gamma-BHC (Lindane)
 R.T.: 3.550 min
 Delta R.T.: -0.049 min
 Response: 23925586
 Conc: 2.79 ng/ml



#4 Heptachlor
 R.T.: 4.946 min
 Delta R.T.: 0.001 min
 Response: 9006467
 Conc: 4.49 ng/ml

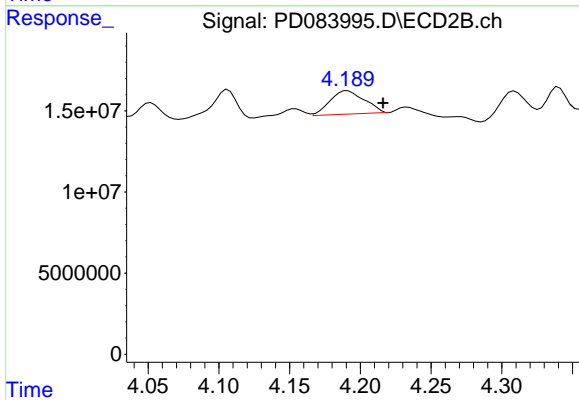


#4 Heptachlor
 R.T.: 3.941 min
 Delta R.T.: 0.004 min
 Response: 7505456
 Conc: 0.89 ng/ml

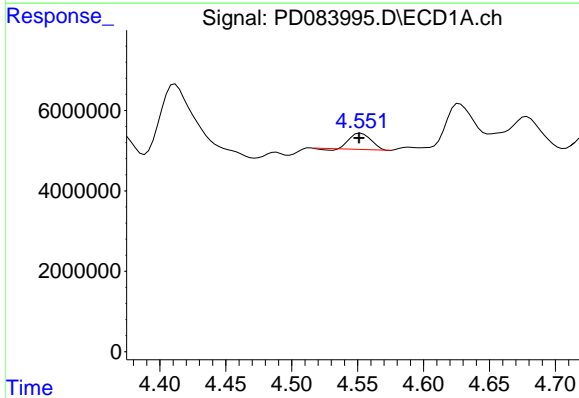


#5 Aldrin
 R.T.: 5.304 min
 Delta R.T.: 0.014 min
 Response: 651517
 Conc: 0.32 ng/ml

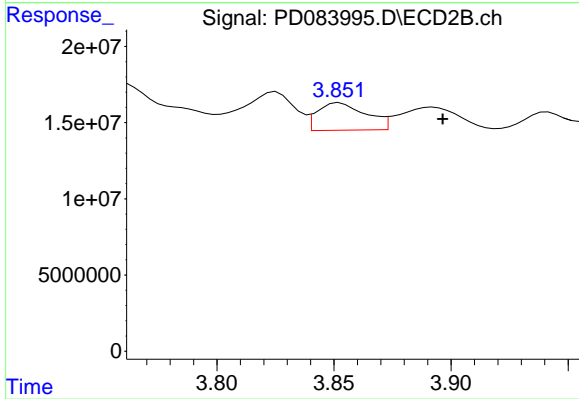
Instrument :
 ECD_D
 ClientSampleId :



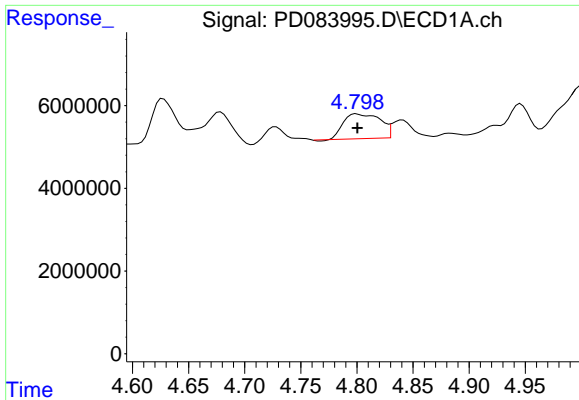
#5 Aldrin
 R.T.: 4.191 min
 Delta R.T.: -0.025 min
 Response: 24251673
 Conc: 2.87 ng/ml



#6 beta-BHC
 R.T.: 4.552 min
 Delta R.T.: 0.001 min
 Response: 4436361
 Conc: 5.28 ng/ml



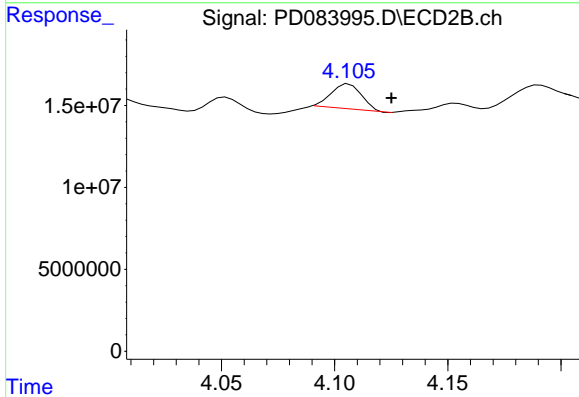
#6 beta-BHC
 R.T.: 3.852 min
 Delta R.T.: -0.044 min
 Response: 25975839
 Conc: 6.85 ng/ml



#7 delta-BHC

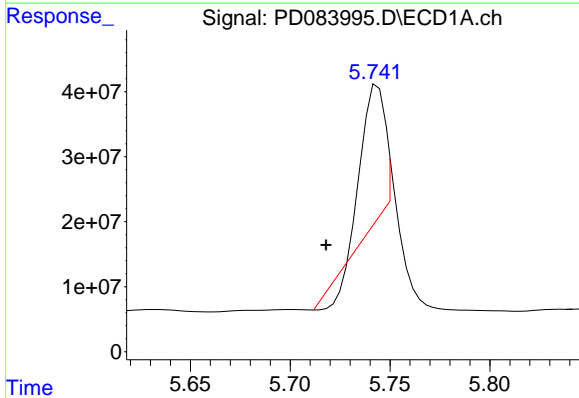
R.T.: 4.799 min
 Delta R.T.: 0.000 min
 Response: 13581729
 Conc: 6.41 ng/ml

Instrument :
 ECD_D
 ClientSampleId :



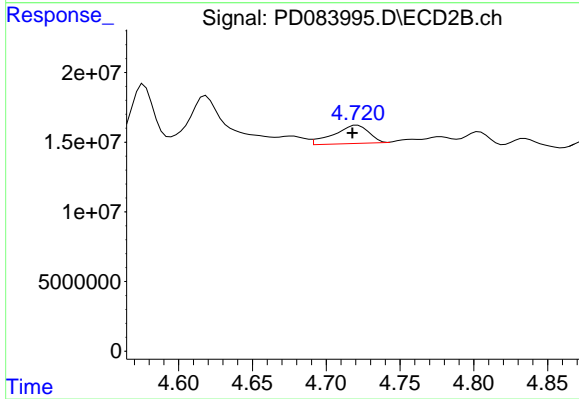
#7 delta-BHC

R.T.: 4.106 min
 Delta R.T.: -0.019 min
 Response: 14181595
 Conc: 1.55 ng/ml



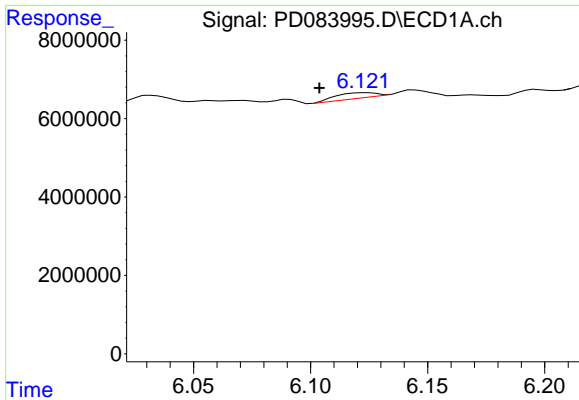
#8 Heptachlor epoxide

R.T.: 5.744 min
 Delta R.T.: 0.026 min
 Response: 154437984
 Conc: 79.33 ng/ml



#8 Heptachlor epoxide

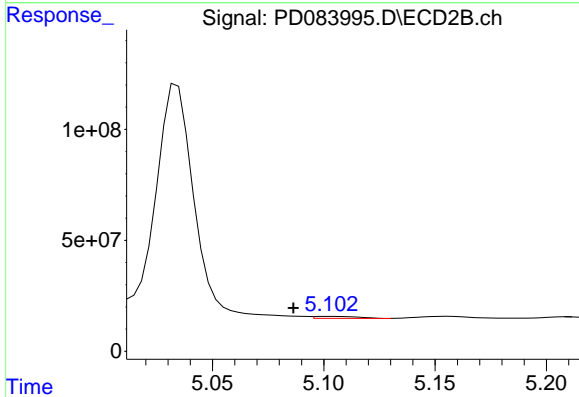
R.T.: 4.721 min
 Delta R.T.: 0.003 min
 Response: 21570746
 Conc: 2.75 ng/ml



#9 Endosulfan I

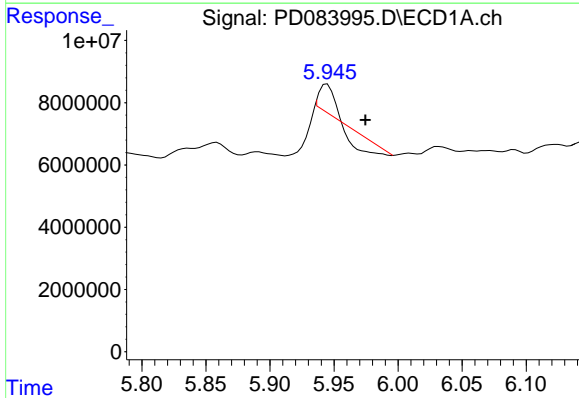
R.T.: 6.124 min
 Delta R.T.: 0.020 min
 Response: 1608618
 Conc: 0.87 ng/ml

Instrument :
 ECD_D
 ClientSampleId :



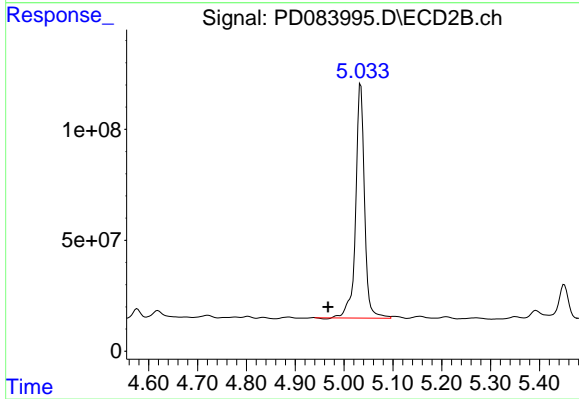
#9 Endosulfan I

R.T.: 5.104 min
 Delta R.T.: 0.017 min
 Response: 12125194
 Conc: 1.74 ng/ml



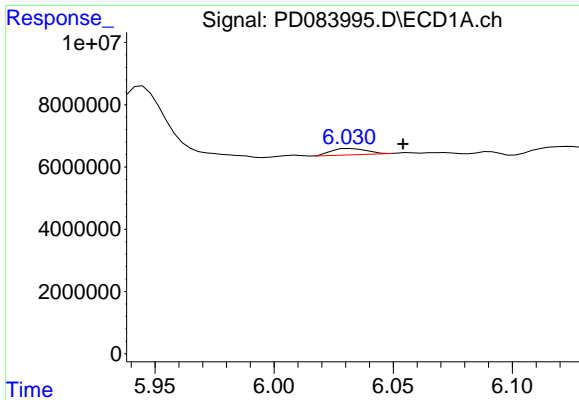
#10 trans-Chlordane

R.T.: 5.945 min
 Delta R.T.: -0.030 min
 Response: 424720
 Conc: 0.22 ng/ml



#10 trans-Chlordane

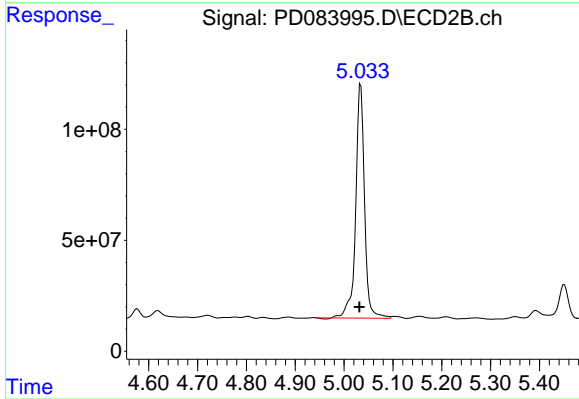
R.T.: 5.034 min
 Delta R.T.: 0.067 min
 Response: 1330897941
 Conc: 172.24 ng/ml



#11 cis-Chlordane

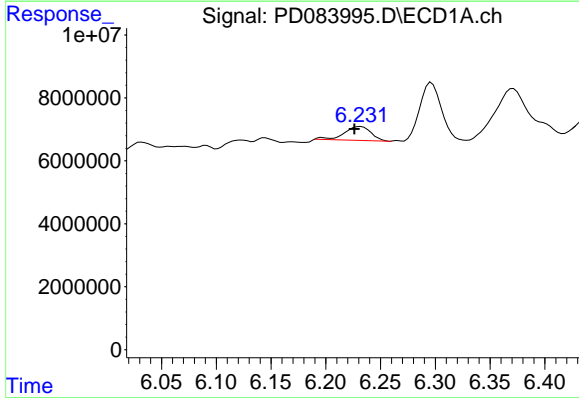
R.T.: 6.032 min
 Delta R.T.: -0.022 min
 Response: 2066718
 Conc: 1.06 ng/ml

Instrument :
 ECD_D
 ClientSampleId :



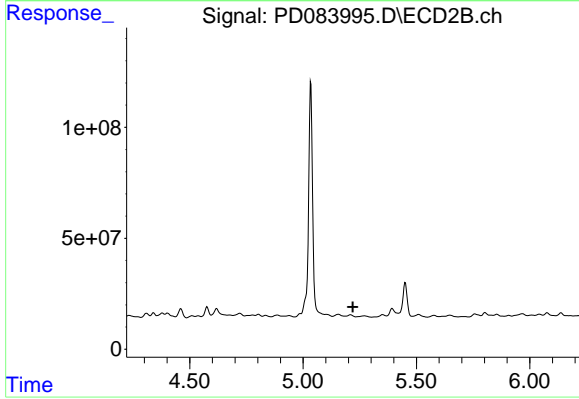
#11 cis-Chlordane

R.T.: 5.034 min
 Delta R.T.: 0.003 min
 Response: 1330897941
 Conc: 169.09 ng/ml



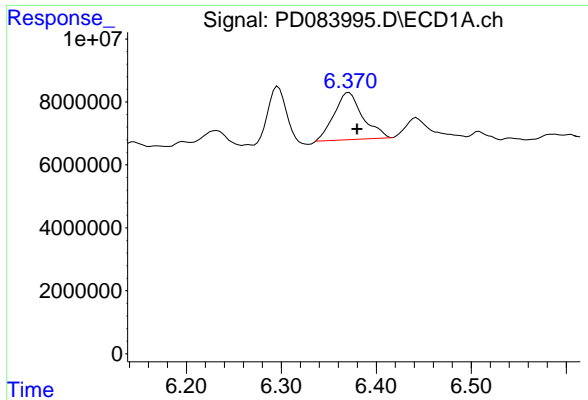
#12 4,4'-DDE

R.T.: 6.232 min
 Delta R.T.: 0.005 min
 Response: 7277209
 Conc: 3.67 ng/ml



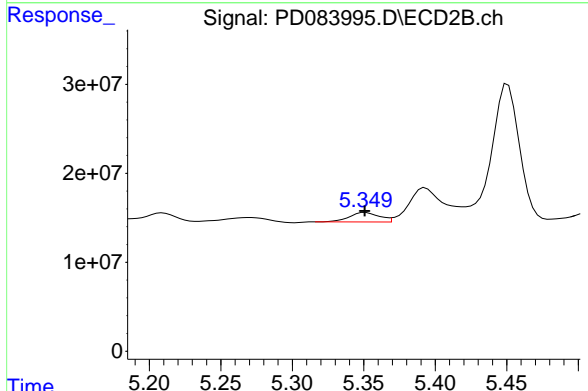
#12 4,4'-DDE

R.T.: 0.000 min
 Exp R.T. : 5.219 min
 Response: 0
 Conc: N.D.

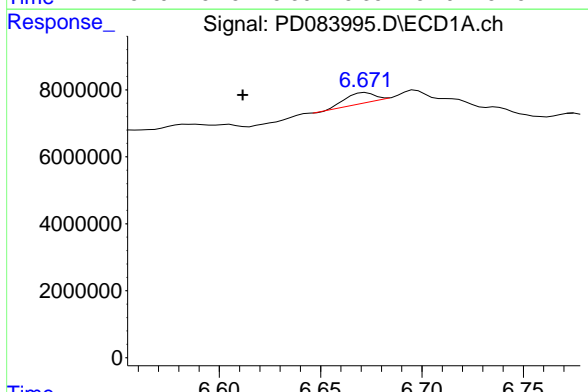


#13 Dieldrin
 R.T.: 6.371 min
 Delta R.T.: -0.008 min
 Response: 31362407
 Conc: 15.66 ng/ml

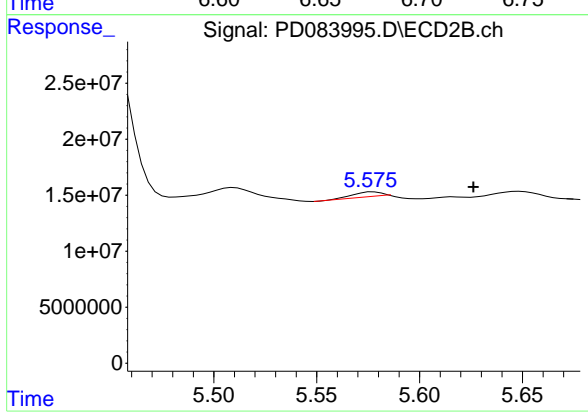
Instrument :
 ECD_D
 ClientSampleId :



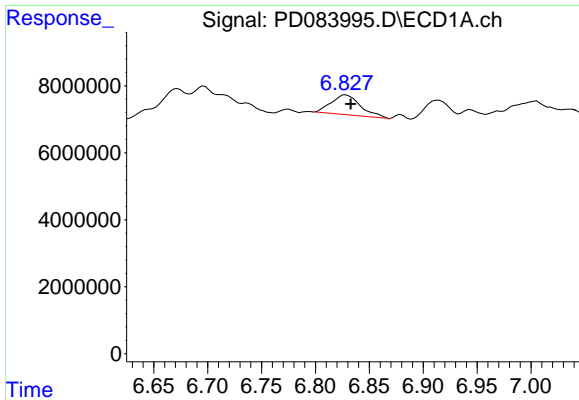
#13 Dieldrin
 R.T.: 5.351 min
 Delta R.T.: 0.000 min
 Response: 15594622
 Conc: 2.01 ng/ml



#14 Endrin
 R.T.: 6.672 min
 Delta R.T.: 0.061 min
 Response: 3029533
 Conc: 1.83 ng/ml



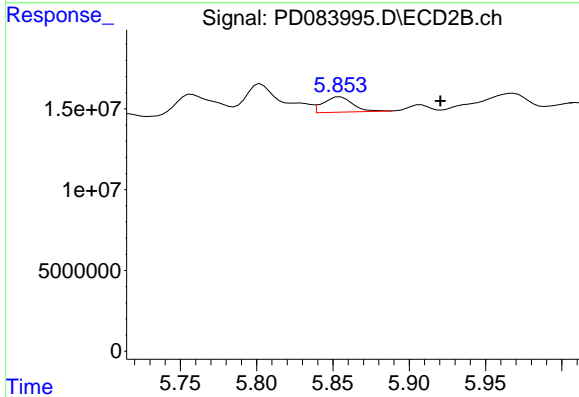
#14 Endrin
 R.T.: 5.578 min
 Delta R.T.: -0.048 min
 Response: 4022014
 Conc: 0.61 ng/ml



#15 Endosulfan II

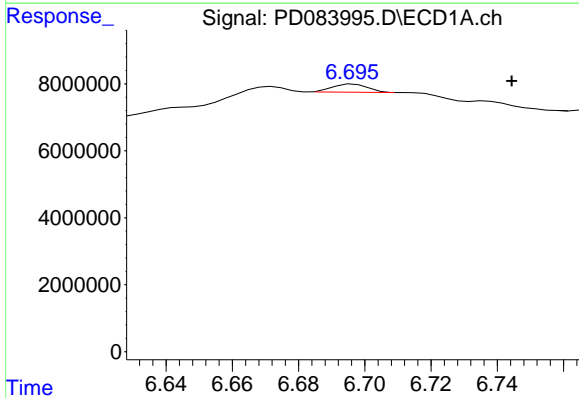
R.T.: 6.828 min
 Delta R.T.: -0.004 min
 Response: 11214989
 Conc: 6.15 ng/ml

Instrument :
 ECD_D
 ClientSampleId :



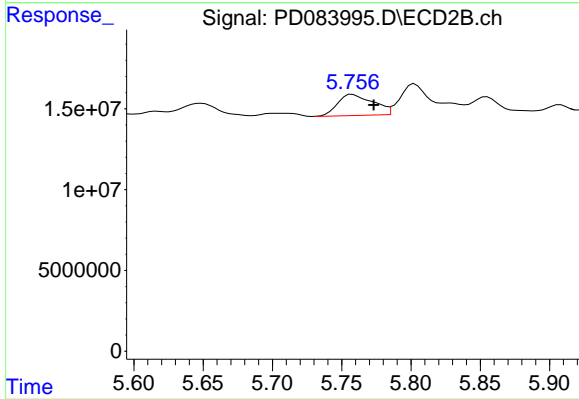
#15 Endosulfan II

R.T.: 5.855 min
 Delta R.T.: -0.066 min
 Response: 12656972
 Conc: 1.90 ng/ml



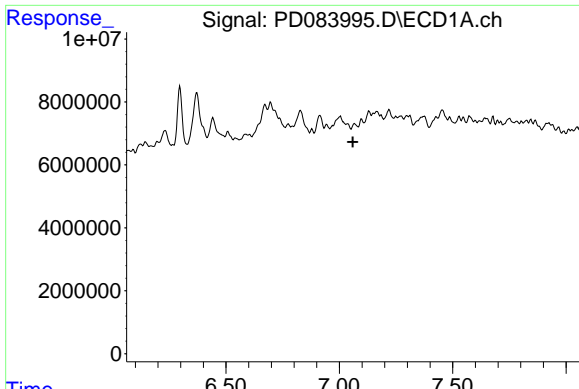
#16 4,4'-DDD

R.T.: 6.697 min
 Delta R.T.: -0.048 min
 Response: 1798915
 Conc: 1.25 ng/ml



#16 4,4'-DDD

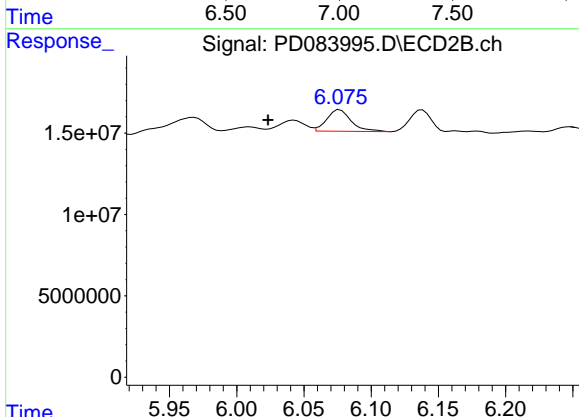
R.T.: 5.758 min
 Delta R.T.: -0.015 min
 Response: 23261041
 Conc: 3.90 ng/ml



#17 4,4'-DDT

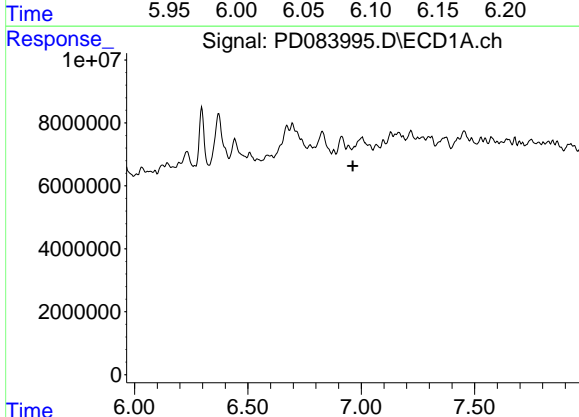
R.T.: 7.067 min
 Delta R.T.: 0.007 min
 Response: -113503
 Conc: N.D.

Instrument :
 ECD_D
 ClientSampleId :



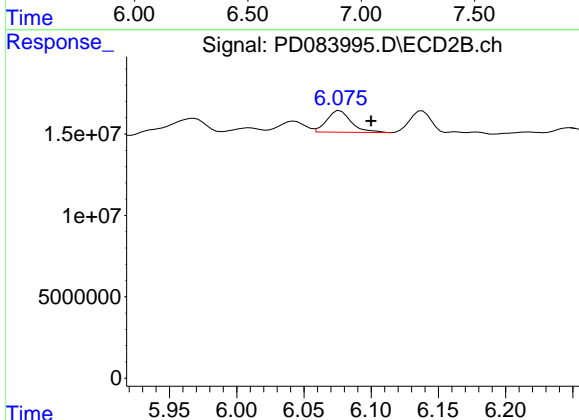
#17 4,4'-DDT

R.T.: 6.077 min
 Delta R.T.: 0.053 min
 Response: 16678493
 Conc: 2.85 ng/ml



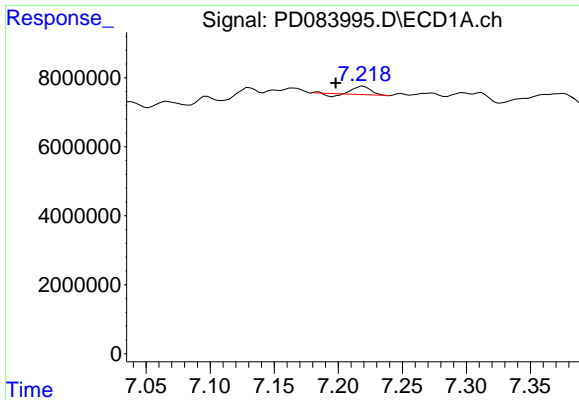
#18 Endrin aldehyde

R.T.: 6.944 min
 Delta R.T.: -0.019 min
 Response: -1897768
 Conc: N.D.



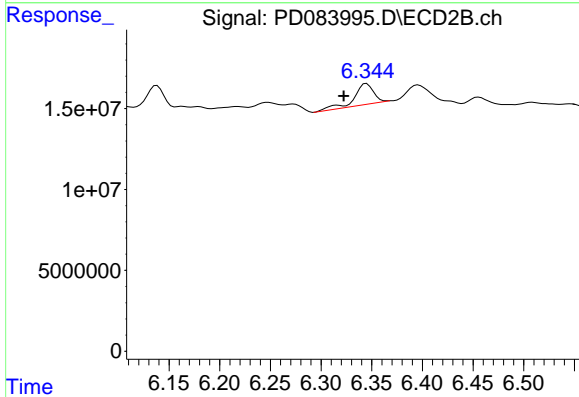
#18 Endrin aldehyde

R.T.: 6.077 min
 Delta R.T.: -0.023 min
 Response: 16678493
 Conc: 3.33 ng/ml

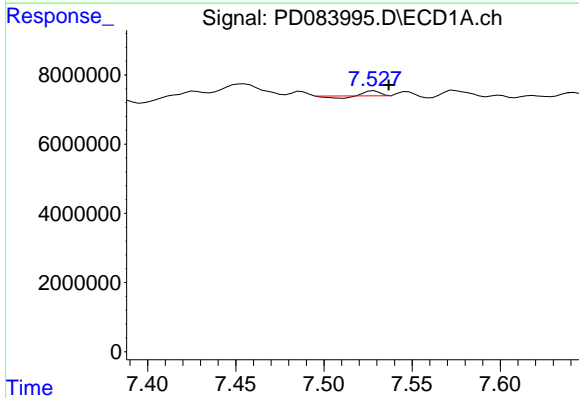


#19 Endosulfan Sulfate
 R.T.: 7.220 min
 Delta R.T.: 0.022 min
 Response: 1925882
 Conc: 1.09 ng/ml

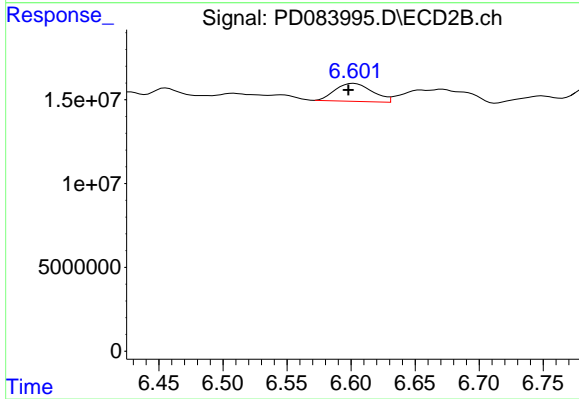
Instrument :
 ECD_D
 ClientSampleId :



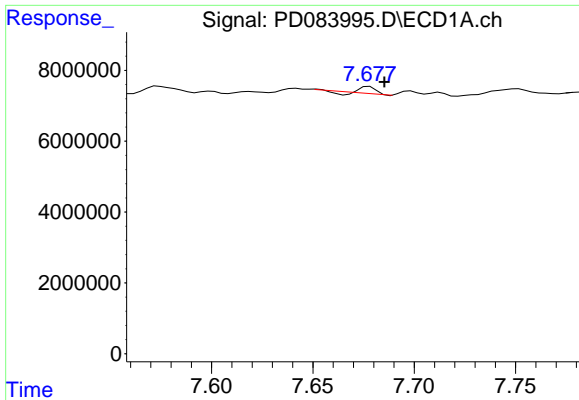
#19 Endosulfan Sulfate
 R.T.: 6.345 min
 Delta R.T.: 0.023 min
 Response: 17168380
 Conc: 2.64 ng/ml



#20 Methoxychlor
 R.T.: 7.529 min
 Delta R.T.: -0.008 min
 Response: 444974
 Conc: 0.50 ng/ml



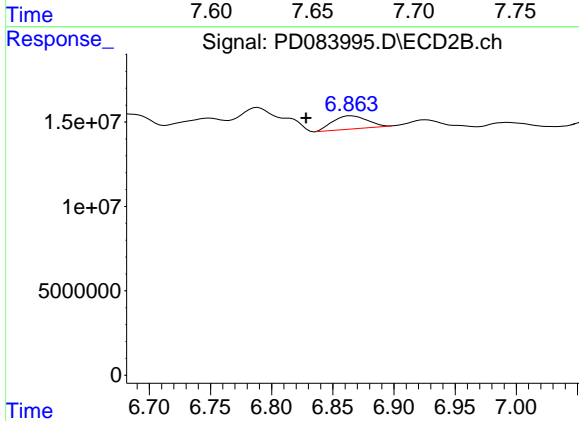
#20 Methoxychlor
 R.T.: 6.602 min
 Delta R.T.: 0.004 min
 Response: 21678076
 Conc: 7.34 ng/ml



#21 Endrin ketone

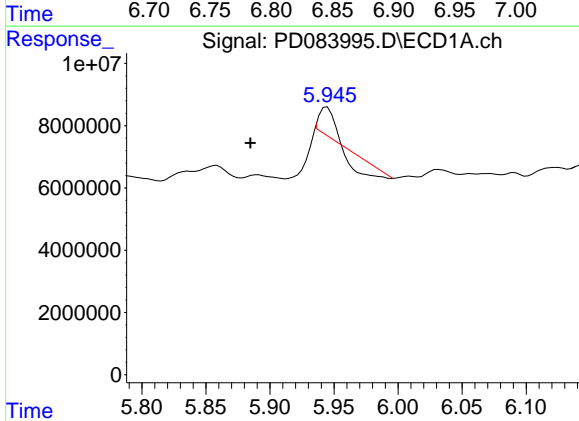
R.T.: 7.678 min
 Delta R.T.: -0.007 min
 Response: 858101
 Conc: 0.44 ng/ml

Instrument :
 ECD_D
 ClientSampleId :



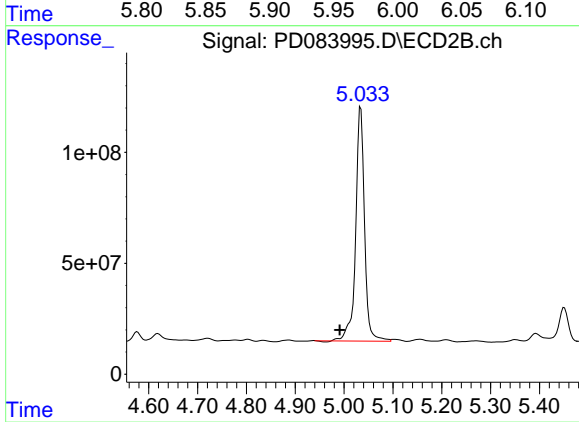
#21 Endrin ketone

R.T.: 6.865 min
 Delta R.T.: 0.037 min
 Response: 15229966
 Conc: 2.17 ng/ml



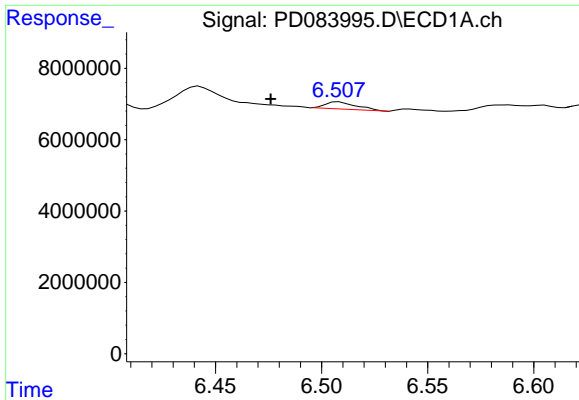
#22 Toxaphene-1

R.T.: 5.945 min
 Delta R.T.: 0.060 min
 Response: 424720
 Conc: 80.02 ng/ml



#22 Toxaphene-1

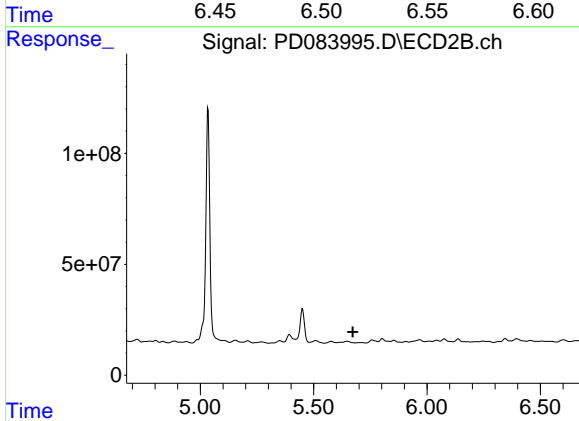
R.T.: 5.034 min
 Delta R.T.: 0.043 min
 Response: 1330897941
 Conc: 34836.47 ng/ml



#23 Toxaphene-2

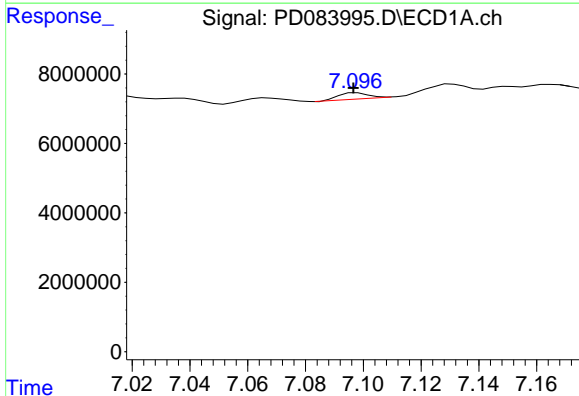
R.T.: 6.508 min
 Delta R.T.: 0.032 min
 Response: 2053074
 Conc: 126.44 ng/ml

Instrument :
 ECD_D
 ClientSampleId :



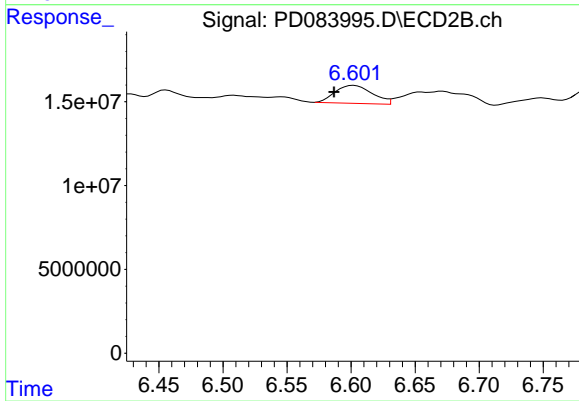
#23 Toxaphene-2

R.T.: 0.000 min
 Exp R.T. : 5.673 min
 Response: 0
 Conc: N.D.



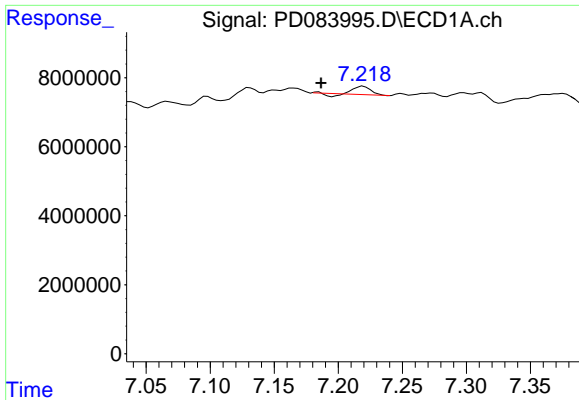
#24 Toxaphene-3

R.T.: 7.098 min
 Delta R.T.: 0.001 min
 Response: 1245354
 Conc: 26.11 ng/ml



#24 Toxaphene-3

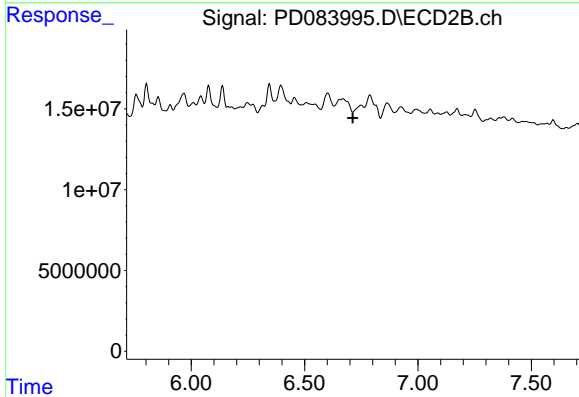
R.T.: 6.602 min
 Delta R.T.: 0.016 min
 Response: 21678076
 Conc: 165.58 ng/ml



#25 Toxaphene-4

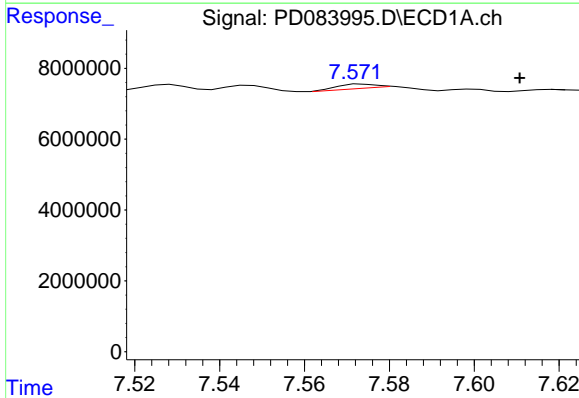
R.T.: 7.220 min
 Delta R.T.: 0.033 min
 Response: 1925882
 Conc: 53.26 ng/ml

Instrument :
 ECD_D
 ClientSampleId :



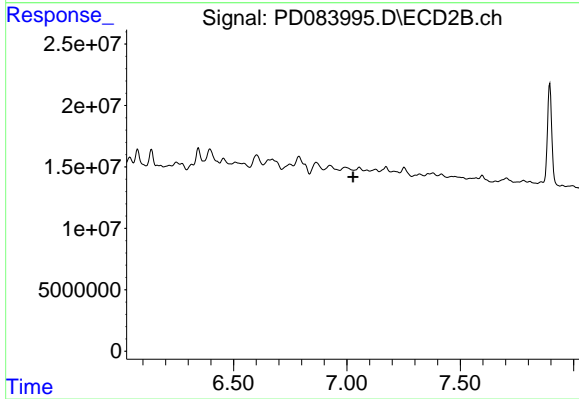
#25 Toxaphene-4

R.T.: 0.000 min
 Exp R.T. : 6.713 min
 Response: 0
 Conc: N.D.



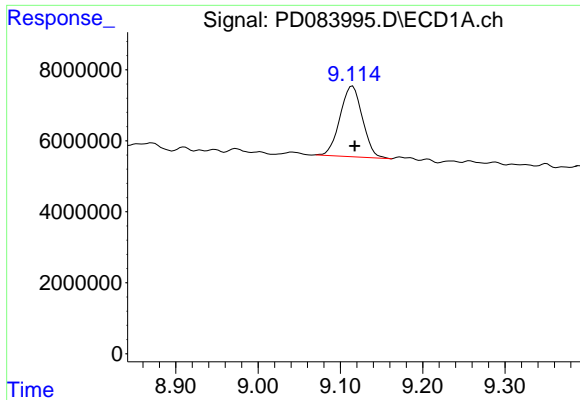
#26 Toxaphene-5

R.T.: 7.574 min
 Delta R.T.: -0.037 min
 Response: 987892
 Conc: 37.22 ng/ml



#26 Toxaphene-5

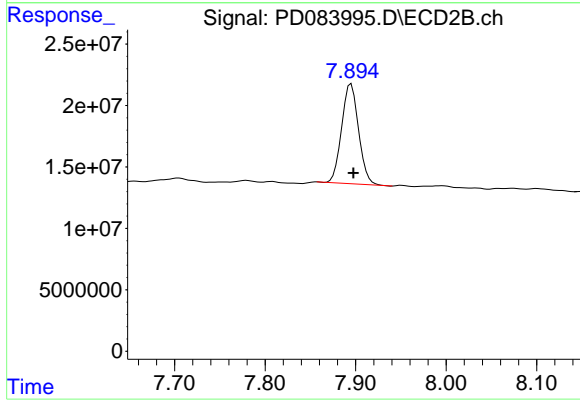
R.T.: 0.000 min
 Exp R.T. : 7.027 min
 Response: 0
 Conc: N.D.



#27 Decachlorobiphenyl

R.T.: 9.115 min
Delta R.T.: -0.003 min
Response: 37658423
Conc: 17.67 ng/ml

Instrument :
ECD_D
ClientSampleId :



#27 Decachlorobiphenyl

R.T.: 7.895 min
Delta R.T.: -0.002 min
Response: 105828023
Conc: 15.84 ng/ml