

Data Path : Z:\pestpcbsrv\HPCHEM1\ECD_D\Data\PD071824\
 Data File : PD083997.D
 Signal(s) : Signal #1: ECD1A.ch Signal #2: ECD2B.ch
 Acq On : 19 Jul 2024 04:13
 Operator : AR\AJ
 Sample : P3287-07
 Misc :
 ALS Vial : 9 Sample Multiplier: 1

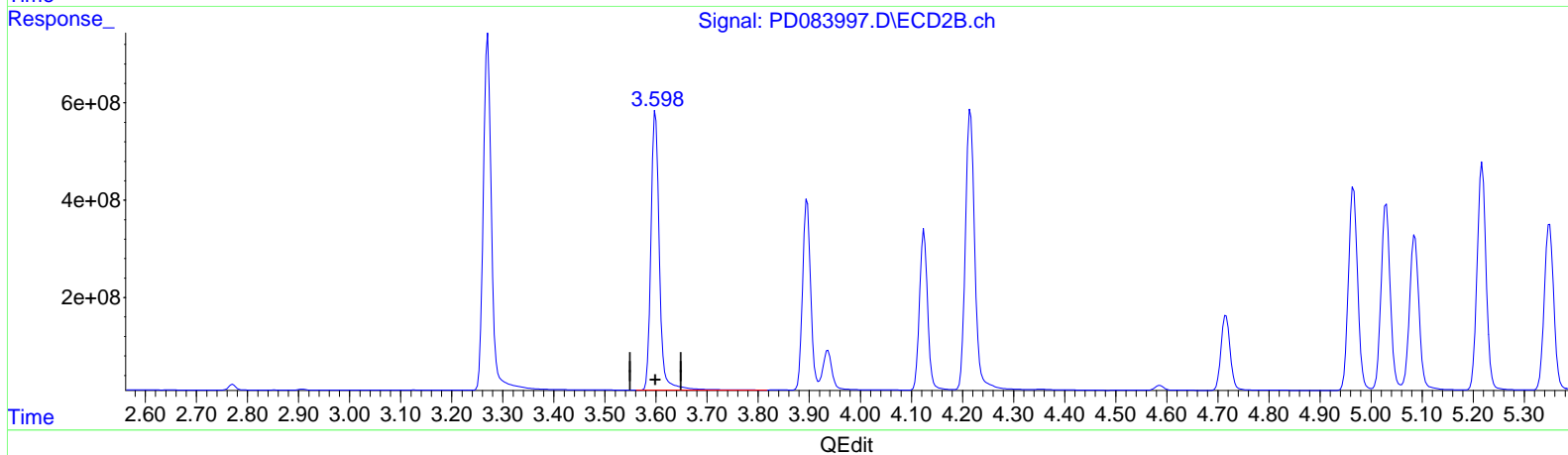
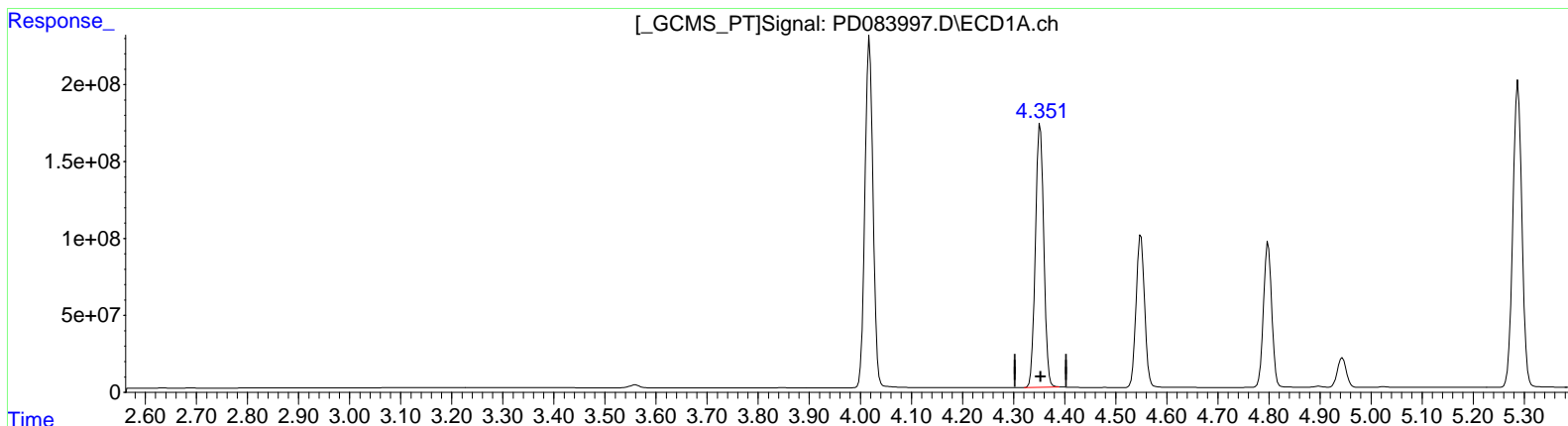
Instrument :
 ECD_D
 ClientSampleId :
 XB506

Manual Integrations APPROVED

Reviewed By : Abdul Mirza 07/22/2024
 Supervised By : Ankita Jodhani 07/22/2024

Integration File signal 1: autoint1.e
 Integration File signal 2: autoint2.e
 Quant Time: Jul 19 05:59:45 2024
 Quant Method : Z:\pestpcbsrv\HPCHEM1\ECD_D\Method\PD062624CLP.M
 Quant Title : GC Extractables
 QLast Update : Thu Jun 27 04:33:52 2024
 Response via : Initial Calibration
 Integrator: ChemStation

Volume Inj. : 1 µl
 Signal #1 Phase : ZB-MR1 Signal #2 Phase: ZB-MR2
 Signal #1 Info : 30M x 0.32mm x 0.5 Signal #2 Info : 30M x 0.32mm x 0.25µm



(3) gamma-BHC (Lindane) (MA)
 4.352min 1052.207 ng/ml
 response 1941887820

(3) gamma-BHC (Lindane) #2 (MA)
 3.599min 762.775 ng/ml
 response 6529820417

Data Path : Z:\pestpcbsrv\HPCHEM1\ECD_D\Data\PD071824\
 Data File : PD083997.D
 Signal(s) : Signal #1: ECD1A.ch Signal #2: ECD2B.ch
 Acq On : 19 Jul 2024 04:13
 Operator : AR\AJ
 Sample : P3287-07
 Misc :
 ALS Vial : 9 Sample Multiplier: 1

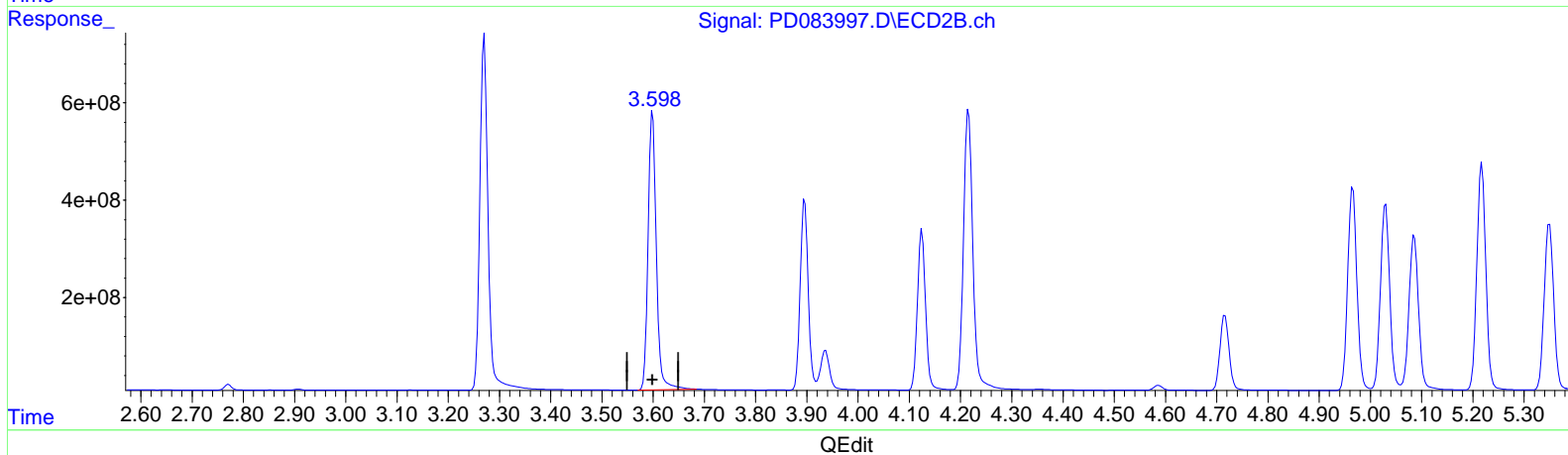
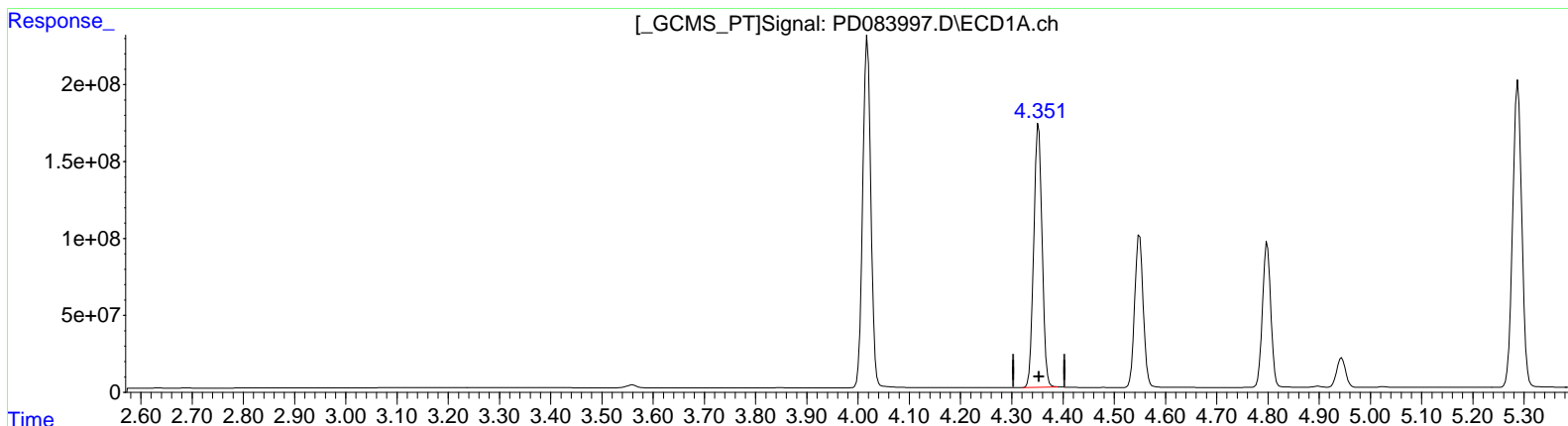
Instrument :
 ECD_D
 ClientSampleId :
 XB506

Manual Integrations APPROVED

Reviewed By : Abdul Mirza 07/22/2024
 Supervised By : Ankita Jodhani 07/22/2024

Integration File signal 1: autoint1.e
 Integration File signal 2: autoint2.e
 Quant Time: Jul 19 05:59:45 2024
 Quant Method : Z:\pestpcbsrv\HPCHEM1\ECD_D\Method\PD062624CLP.M
 Quant Title : GC Extractables
 QLast Update : Thu Jun 27 04:33:52 2024
 Response via : Initial Calibration
 Integrator: ChemStation

Volume Inj. : 1 µl
 Signal #1 Phase : ZB-MR1 Signal #2 Phase: ZB-MR2
 Signal #1 Info : 30M x 0.32mm x 0.5 Signal #2 Info : 30M x 0.32mm x 0.25µm



(3) gamma-BHC (Lindane) (MA)
 4.352min 1052.207 ng/ml
 response 1941887820

(3) gamma-BHC (Lindane) #2 (MA)
 3.598min 750.691 ng/ml m
 response 6426374056

Data Path : Z:\pestpcbsrv\HPCHEM1\ECD_D\Data\PD071824\
 Data File : PD083997.D
 Signal(s) : Signal #1: ECD1A.ch Signal #2: ECD2B.ch
 Acq On : 19 Jul 2024 04:13
 Operator : AR\AJ
 Sample : P3287-07
 Misc :
 ALS Vial : 9 Sample Multiplier: 1

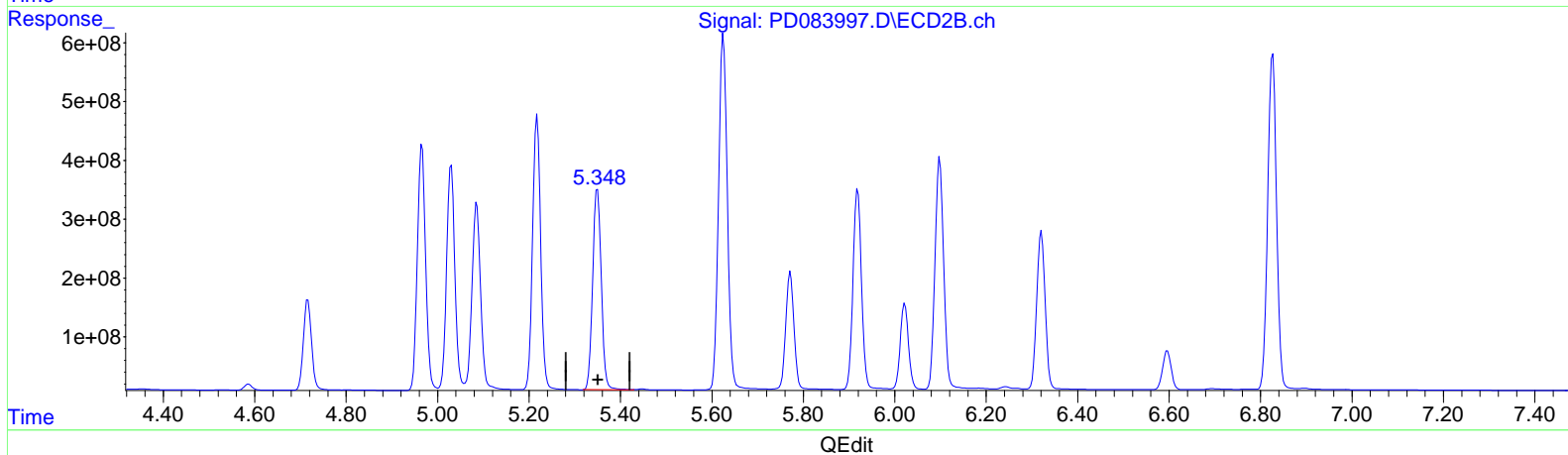
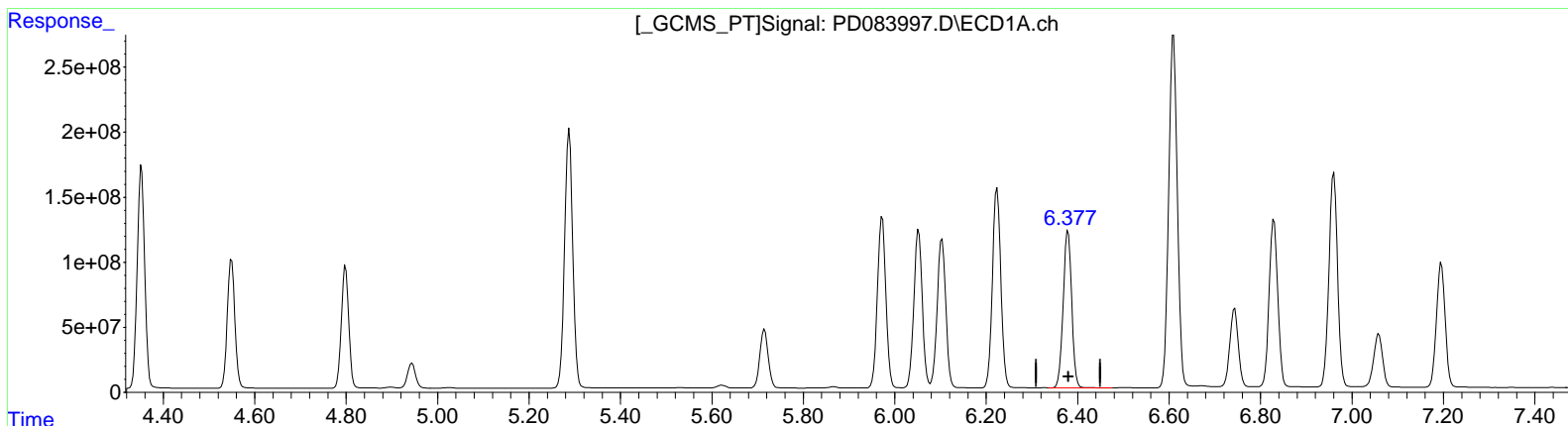
Instrument :
 ECD_D
 ClientSampleId :
 XB506

Manual Integrations APPROVED

Reviewed By : Abdul Mirza 07/22/2024
 Supervised By : Ankita Jodhani 07/22/2024

Integration File signal 1: autoint1.e
 Integration File signal 2: autoint2.e
 Quant Time: Jul 19 05:59:45 2024
 Quant Method : Z:\pestpcbsrv\HPCHEM1\ECD_D\Method\PD062624CLP.M
 Quant Title : GC Extractables
 QLast Update : Thu Jun 27 04:33:52 2024
 Response via : Initial Calibration
 Integrator: ChemStation

Volume Inj. : 1 µl
 Signal #1 Phase : ZB-MR1 Signal #2 Phase: ZB-MR2
 Signal #1 Info : 30M x 0.32mm x 0.5 Signal #2 Info : 30M x 0.32mm x 0.25µm



(13) Dieldrin (MA)
 6.379min 779.365 ng/ml
 response 1560600649

(13) Dieldrin #2 (MA)
 5.350min 575.437 ng/ml
 response 4454997320

Data Path : Z:\pestpcbsrv\HPCHEM1\ECD_D\Data\PD071824\
 Data File : PD083997.D
 Signal(s) : Signal #1: ECD1A.ch Signal #2: ECD2B.ch
 Acq On : 19 Jul 2024 04:13
 Operator : AR\AJ
 Sample : P3287-07
 Misc :
 ALS Vial : 9 Sample Multiplier: 1

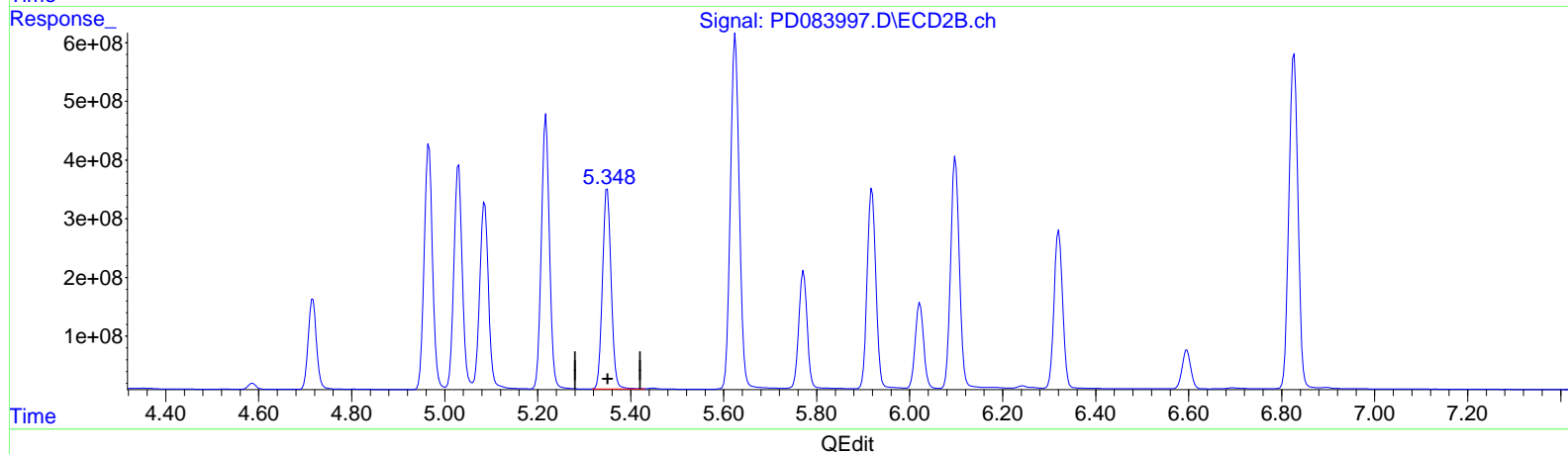
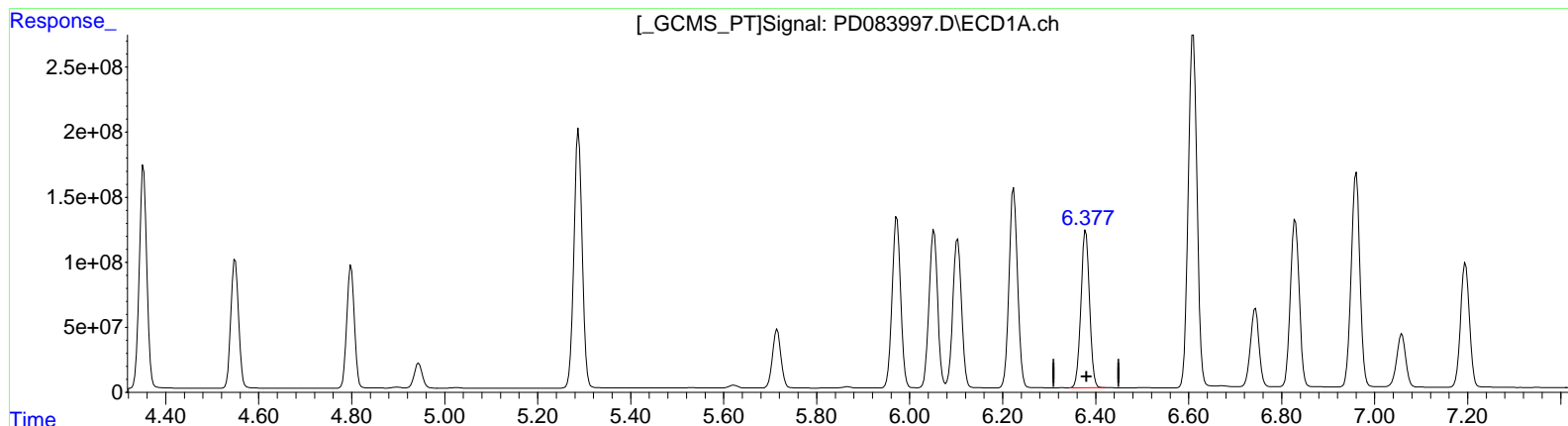
Instrument :
 ECD_D
 ClientSampleId :
 XB506

Manual Integrations APPROVED

Reviewed By : Abdul Mirza 07/22/2024
 Supervised By : Ankita Jodhani 07/22/2024

Integration File signal 1: autoint1.e
 Integration File signal 2: autoint2.e
 Quant Time: Jul 19 05:59:45 2024
 Quant Method : Z:\pestpcbsrv\HPCHEM1\ECD_D\Method\PD062624CLP.M
 Quant Title : GC Extractables
 QLast Update : Thu Jun 27 04:33:52 2024
 Response via : Initial Calibration
 Integrator: ChemStation

Volume Inj. : 1 µl
 Signal #1 Phase : ZB-MR1 Signal #2 Phase: ZB-MR2
 Signal #1 Info : 30M x 0.32mm x 0.5 Signal #2 Info : 30M x 0.32mm x 0.25µm



(13) Dieldrin (MA)
 6.377min 777.604 ng/ml m
 response 1557073176

(13) Dieldrin #2 (MA)
 5.350min 575.437 ng/ml
 response 4454997320

Data Path : Z:\pestpcbsrv\HPCHEM1\ECD_D\Data\PD071824\
 Data File : PD083997.D
 Signal(s) : Signal #1: ECD1A.ch Signal #2: ECD2B.ch
 Acq On : 19 Jul 2024 04:13
 Operator : AR\AJ
 Sample : P3287-07
 Misc :
 ALS Vial : 9 Sample Multiplier: 1

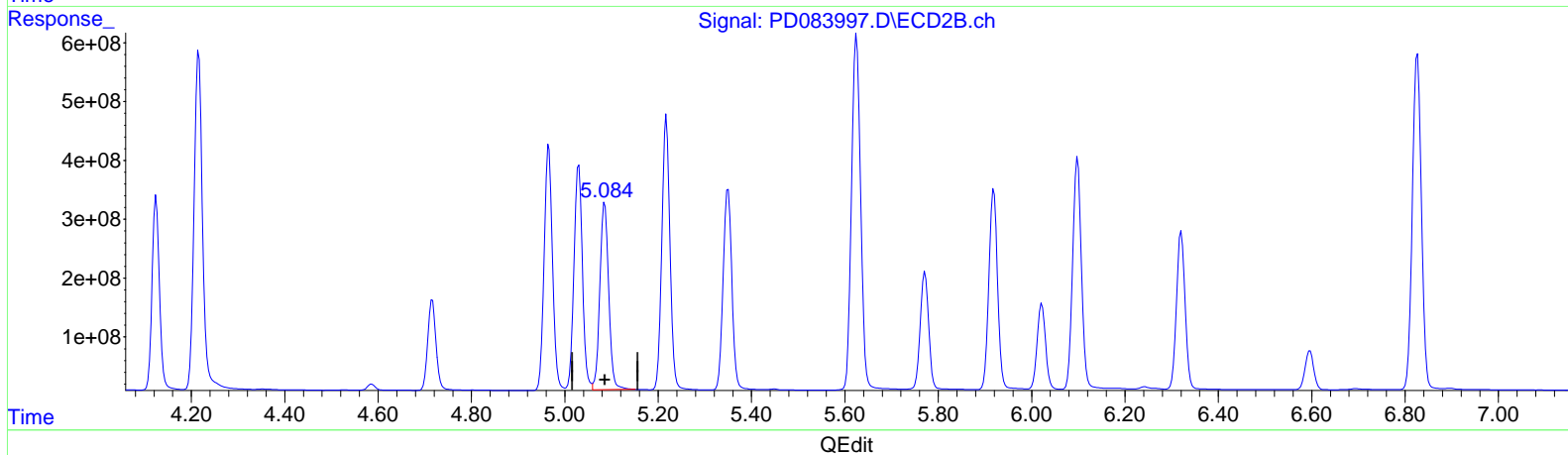
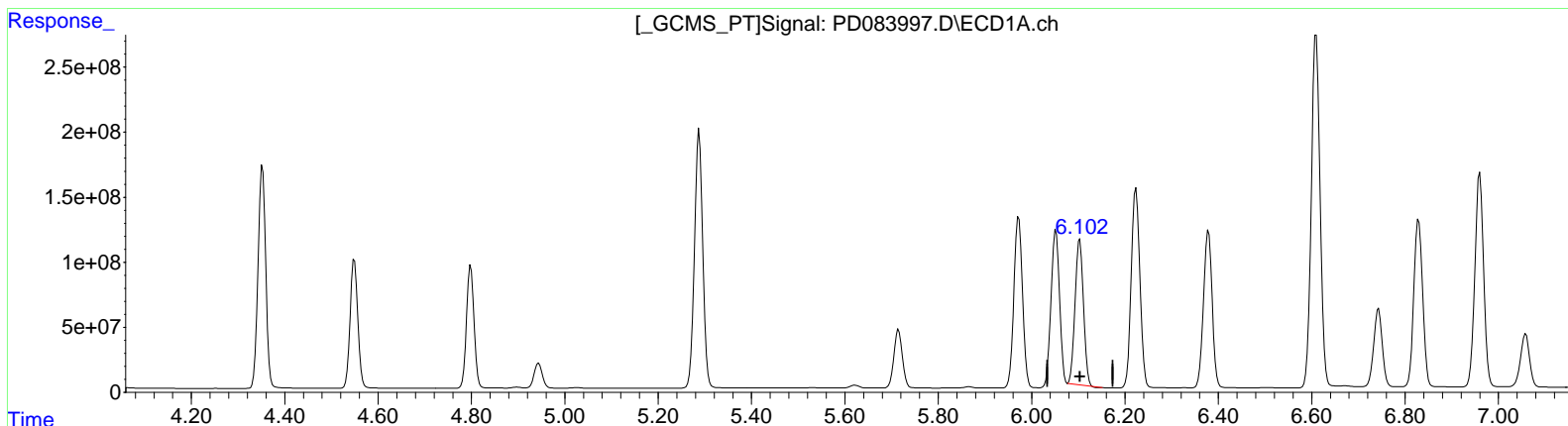
Instrument :
 ECD_D
 ClientSampleId :
 XB506

Manual Integrations APPROVED

Reviewed By : Abdul Mirza 07/22/2024
 Supervised By : Ankita Jodhani 07/22/2024

Integration File signal 1: autoint1.e
 Integration File signal 2: autoint2.e
 Quant Time: Jul 19 05:59:45 2024
 Quant Method : Z:\pestpcbsrv\HPCHEM1\ECD_D\Method\PD062624CLP.M
 Quant Title : GC Extractables
 QLast Update : Thu Jun 27 04:33:52 2024
 Response via : Initial Calibration
 Integrator: ChemStation

Volume Inj. : 1 µl
 Signal #1 Phase : ZB-MR1 Signal #2 Phase: ZB-MR2
 Signal #1 Info : 30M x 0.32mm x 0.5 Signal #2 Info : 30M x 0.32mm x 0.25µm



(9) Endosulfan I (A)
 6.103min 761.787 ng/ml
 response 1410941903

(9) Endosulfan I #2 (A)
 5.086min 598.280 ng/ml
 response 4157221914

Data Path : Z:\pestpcbsrv\HPCHEM1\ECD_D\Data\PD071824\
 Data File : PD083997.D
 Signal(s) : Signal #1: ECD1A.ch Signal #2: ECD2B.ch
 Acq On : 19 Jul 2024 04:13
 Operator : AR\AJ
 Sample : P3287-07
 Misc :
 ALS Vial : 9 Sample Multiplier: 1

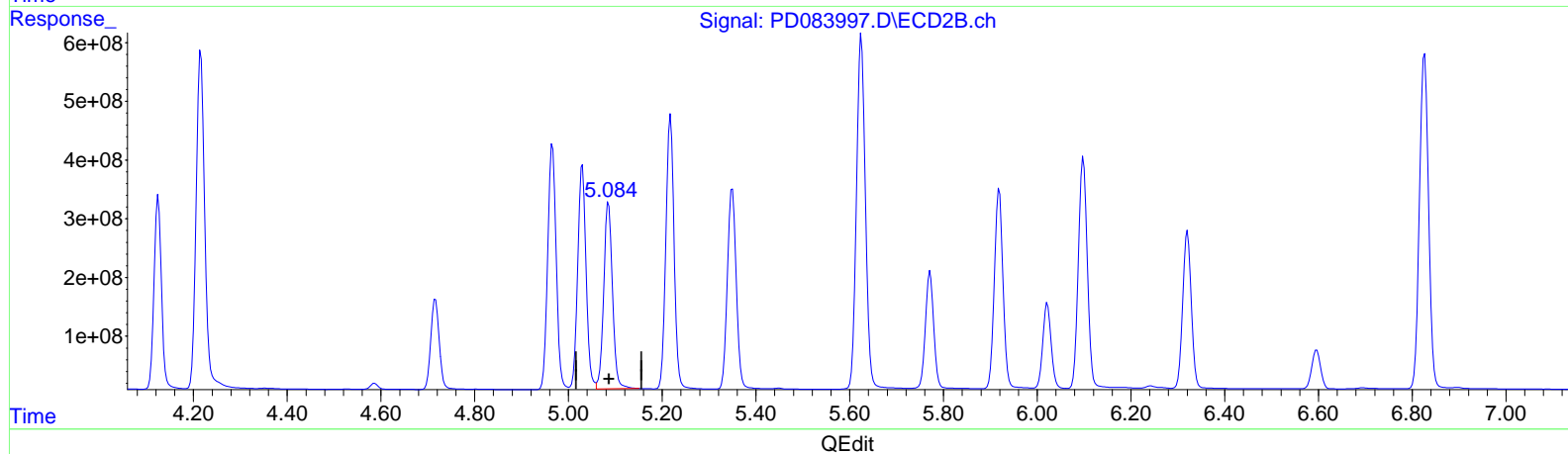
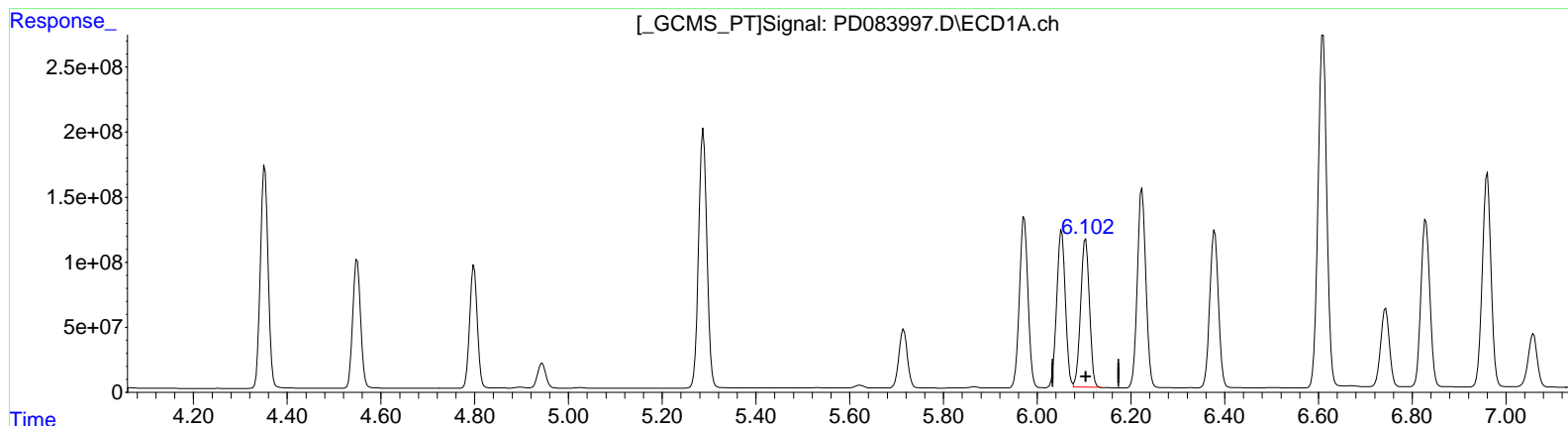
Instrument :
 ECD_D
 ClientSampleId :
 XB506

Manual Integrations APPROVED

Reviewed By : Abdul Mirza 07/22/2024
 Supervised By : Ankita Jodhani 07/22/2024

Integration File signal 1: autoint1.e
 Integration File signal 2: autoint2.e
 Quant Time: Jul 19 05:59:45 2024
 Quant Method : Z:\pestpcbsrv\HPCHEM1\ECD_D\Method\PD062624CLP.M
 Quant Title : GC Extractables
 QLast Update : Thu Jun 27 04:33:52 2024
 Response via : Initial Calibration
 Integrator: ChemStation

Volume Inj. : 1 µl
 Signal #1 Phase : ZB-MR1 Signal #2 Phase: ZB-MR2
 Signal #1 Info : 30M x 0.32mm x 0.5 Signal #2 Info : 30M x 0.32mm x 0.25µm



(9) Endosulfan I (A)
 6.102min 794.758 ng/ml m
 response 1472007697

(9) Endosulfan I #2 (A)
 5.086min 598.280 ng/ml
 response 4157221914

Data Path : Z:\pestpcbsrv\HPCHEM1\ECD_D\Data\PD071824\
 Data File : PD083997.D
 Signal(s) : Signal #1: ECD1A.ch Signal #2: ECD2B.ch
 Acq On : 19 Jul 2024 04:13
 Operator : AR\AJ
 Sample : P3287-07
 Misc :
 ALS Vial : 9 Sample Multiplier: 1

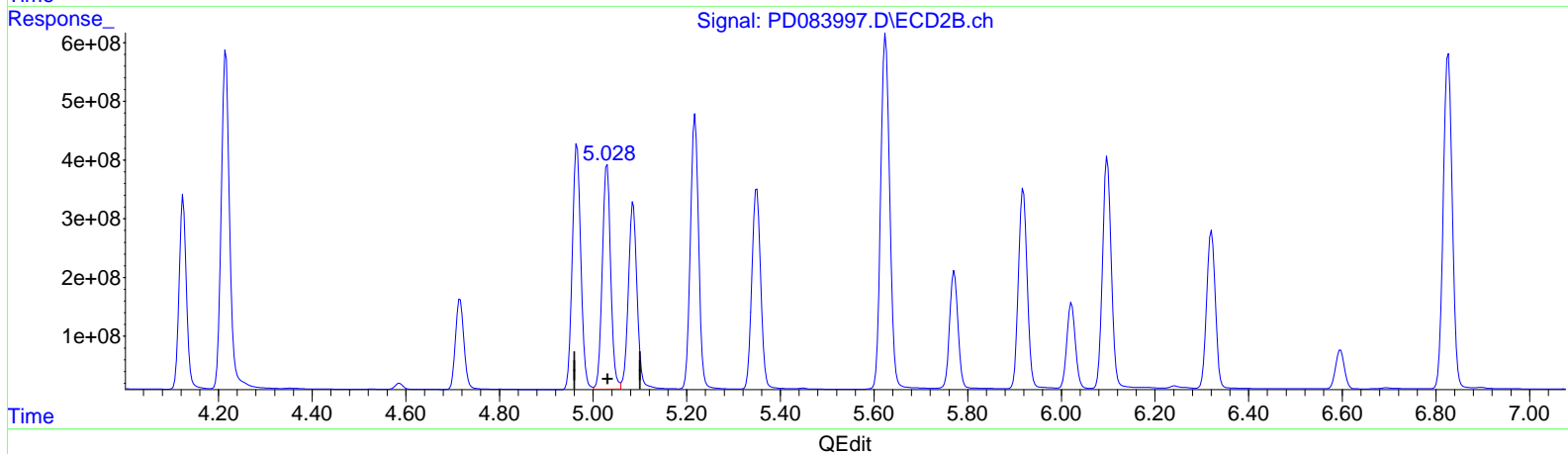
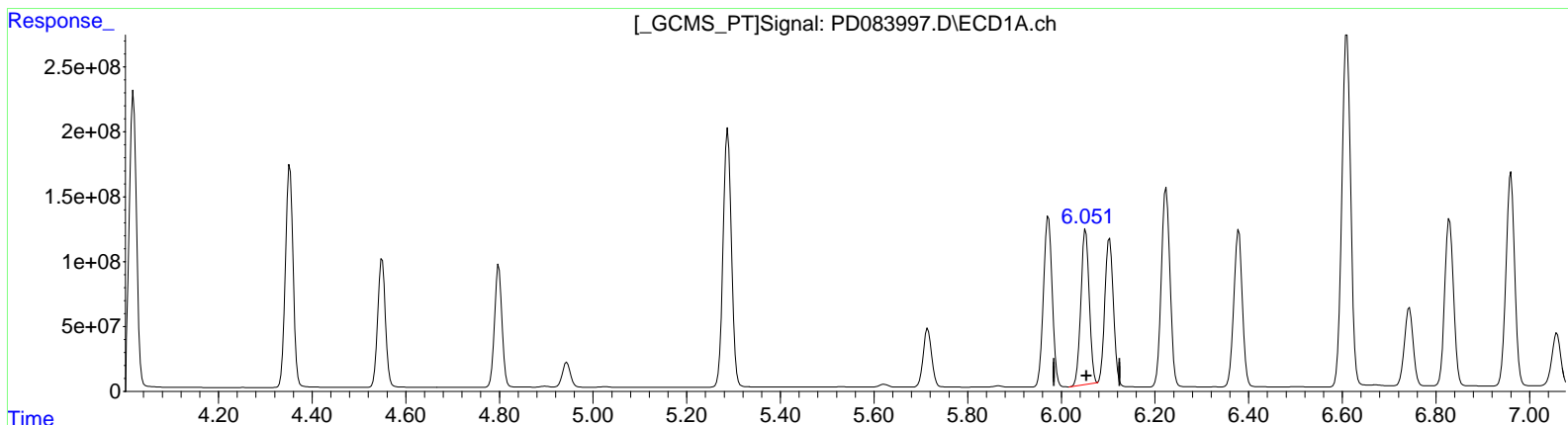
Instrument :
 ECD_D
 ClientSampleId :
 XB506

Manual Integrations APPROVED

Reviewed By : Abdul Mirza 07/22/2024
 Supervised By : Ankita Jodhani 07/22/2024

Integration File signal 1: autoint1.e
 Integration File signal 2: autoint2.e
 Quant Time: Jul 19 05:59:45 2024
 Quant Method : Z:\pestpcbsrv\HPCHEM1\ECD_D\Method\PD062624CLP.M
 Quant Title : GC Extractables
 QLast Update : Thu Jun 27 04:33:52 2024
 Response via : Initial Calibration
 Integrator: ChemStation

Volume Inj. : 1 µl
 Signal #1 Phase : ZB-MR1 Signal #2 Phase: ZB-MR2
 Signal #1 Info : 30M x 0.32mm x 0.5 Signal #2 Info : 30M x 0.32mm x 0.25µm



(11) cis-Chlordane (B)
 6.052min 761.849 ng/ml
 response 1491265328

(11) cis-Chlordane #2 (B)
 5.030min 612.191 ng/ml
 response 4818642284

Data Path : Z:\pestpcbsrv\HPCHEM1\ECD_D\Data\PD071824\
 Data File : PD083997.D
 Signal(s) : Signal #1: ECD1A.ch Signal #2: ECD2B.ch
 Acq On : 19 Jul 2024 04:13
 Operator : AR\AJ
 Sample : P3287-07
 Misc :
 ALS Vial : 9 Sample Multiplier: 1

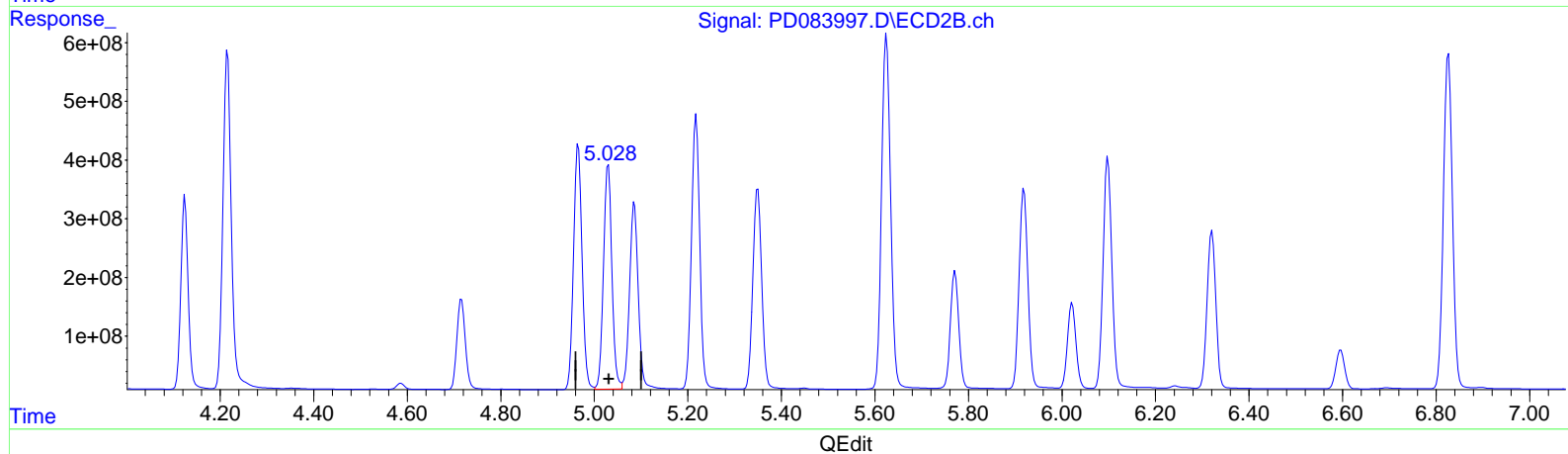
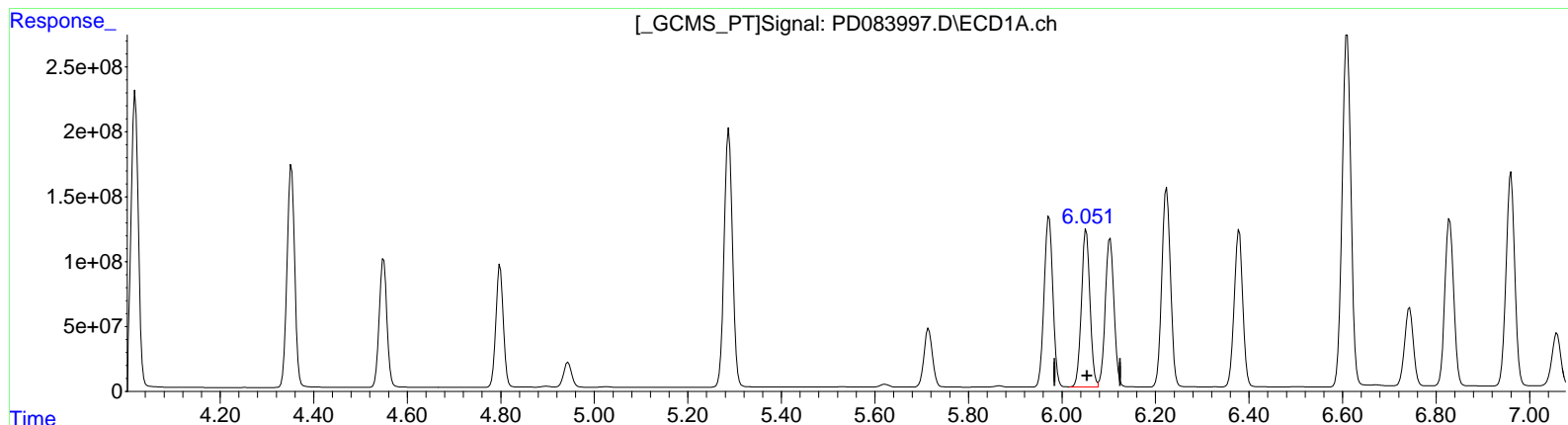
Instrument :
 ECD_D
 ClientSampleId :
 XB506

Manual Integrations APPROVED

Reviewed By : Abdul Mirza 07/22/2024
 Supervised By : Ankita Jodhani 07/22/2024

Integration File signal 1: autoint1.e
 Integration File signal 2: autoint2.e
 Quant Time: Jul 19 05:59:45 2024
 Quant Method : Z:\pestpcbsrv\HPCHEM1\ECD_D\Method\PD062624CLP.M
 Quant Title : GC Extractables
 QLast Update : Thu Jun 27 04:33:52 2024
 Response via : Initial Calibration
 Integrator: ChemStation

Volume Inj. : 1 µl
 Signal #1 Phase : ZB-MR1 Signal #2 Phase: ZB-MR2
 Signal #1 Info : 30M x 0.32mm x 0.5 Signal #2 Info : 30M x 0.32mm x 0.25µm



(11) cis-Chlordane (B)
 6.051min 800.930 ng/ml m
 response 1567762962

(11) cis-Chlordane #2 (B)
 5.030min 612.191 ng/ml
 response 4818642284