

Data Path : Z:\pestpcbsrv\HPCHEM1\ECD_D\Data\PD071919\
 Data File : PD053999.D
 Signal(s) : Signal #1: ECD1A.CH Signal #2: ECD2B.CH
 Acq On : 18 Jul 2019 21:24
 Operator : SM\AJ
 Sample : PEM
 Misc :
 ALS Vial : 21 Sample Multiplier: 1

Instrument :
 ECD_D
ClientSampled :
 PEM

Manual Integrations
APPROVED
 Ankita
 7/19/2019 12:03:44 PM

Integration File signal 1: autoint1.e
 Integration File signal 2: autoint2.e
 Quant Time: Jul 19 05:09:59 2019
 Quant Method : Z:\pestpcbsrv\HPCHEM1\ECD_D\Method\PD071919.M
 Quant Title : GC Extractables
 QLast Update : Fri Jul 19 04:33:23 2019
 Response via : Initial Calibration
 Integrator: ChemStation 6890 Scale Mode: Large solvent peaks clipped

Volume Inj. : 2 µl
 Signal #1 Phase : ZB-MR2 Signal #2 Phase: ZB-MR1
 Signal #1 Info : 30M x 0.32mm x0.2 Signal #2 Info : 30M x 0.32mm x 0.50µm

Compound	RT#1	RT#2	Resp#1	Resp#2	ng/ml	ng/ml

System Monitoring Compounds						
1) SA Tetrachlo...	3.313	3.983	12378337	19127476	21.507	21.957
28) SA Decachlor...	8.008	9.025	14091807	19744568	20.933	21.298
Target Compounds						
2) A alpha-BHC	3.742	4.369	8561075	12552251	9.885	9.951
3) MA gamma-BHC...	4.019	4.652	8506768	12827332	10.370	10.458
6) B beta-BHC	4.269	4.819	3753332	6107406	10.656	10.908
12) B 4,4'-DDE	5.435	6.308	135644	292032	0.171m	0.238m#
14) MA Endrin	5.813	6.676	37539574	51970009	50.127	49.585
16) A 4,4'-DDD	5.950	6.798	159449	273810	0.266m	0.271m
17) MA 4,4'-DDT	6.184	7.095	63518525	105.1E6	110.295	106.641
18) B Endrin al...	6.256	7.005	332249	405473	0.523m	0.408m
20) A Methoxychlor	6.732	7.550	73405640	129.9E6	256.864m	242.169
21) B Endrin ke...	6.952	7.695	529642	932908	0.661m	0.767m

(f)=RT Delta > 1/2 Window (#)=Amounts differ by > 25% (m)=manual int.

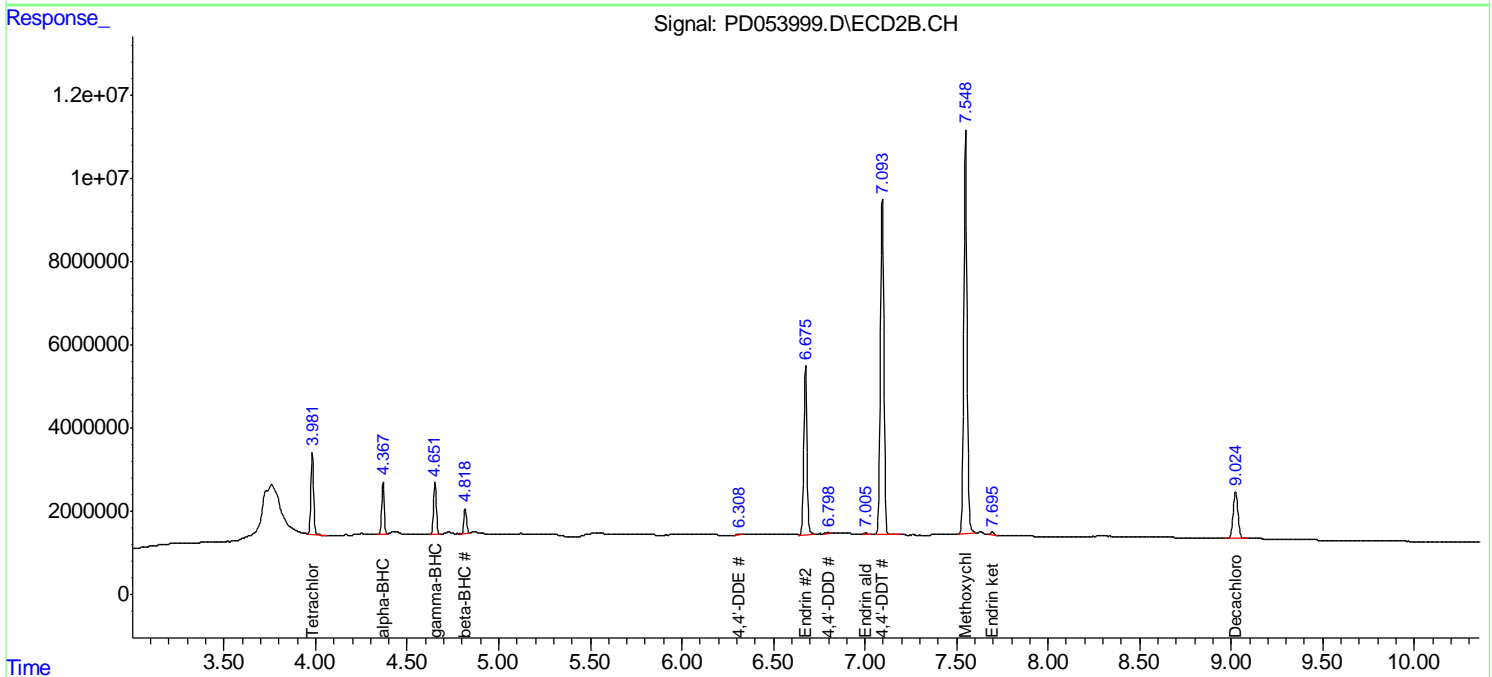
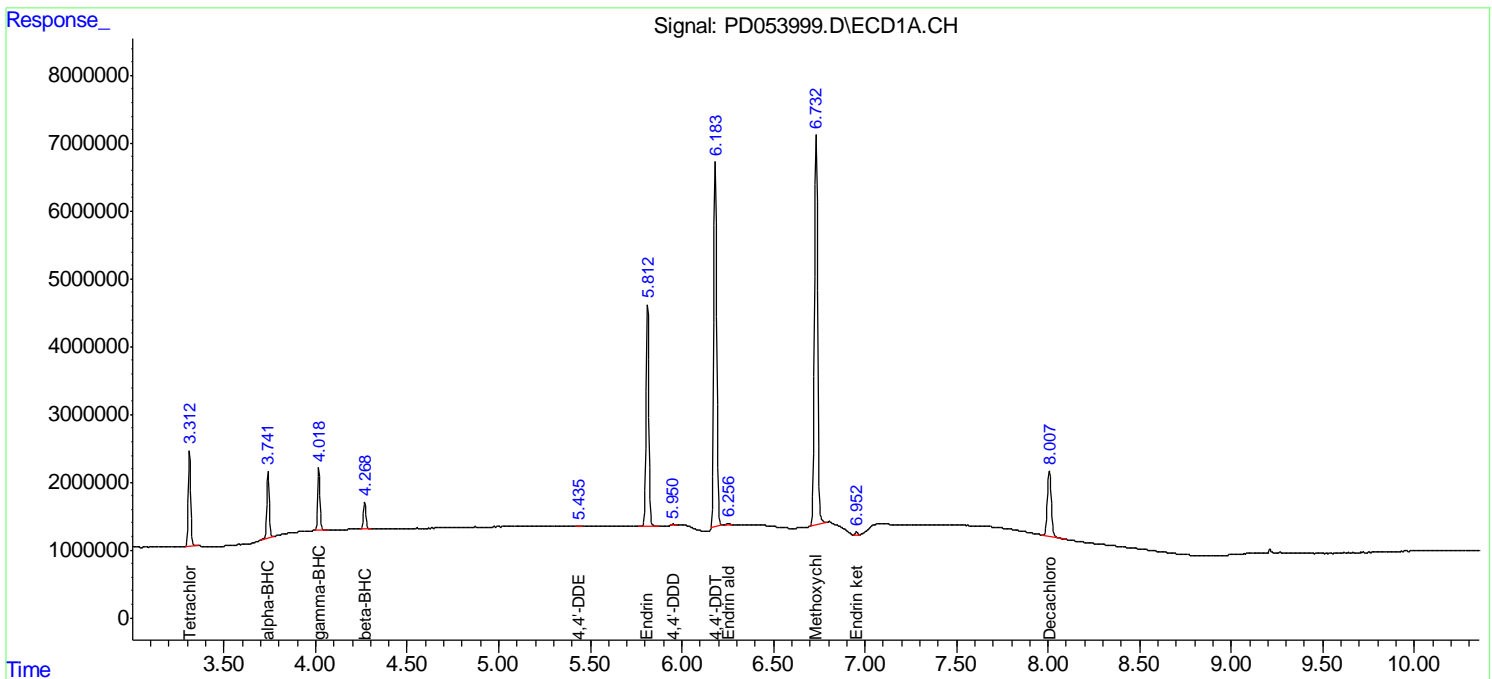
Data Path : Z:\pestpcbsrv\HPCHEM1\ECD_D\Data\PD071919\
 Data File : PD053999.D
 Signal(s) : Signal #1: ECD1A.CH Signal #2: ECD2B.CH
 Acq On : 18 Jul 2019 21:24
 Operator : SM\AJ
 Sample : PEM
 Misc :
 ALS Vial : 21 Sample Multiplier: 1

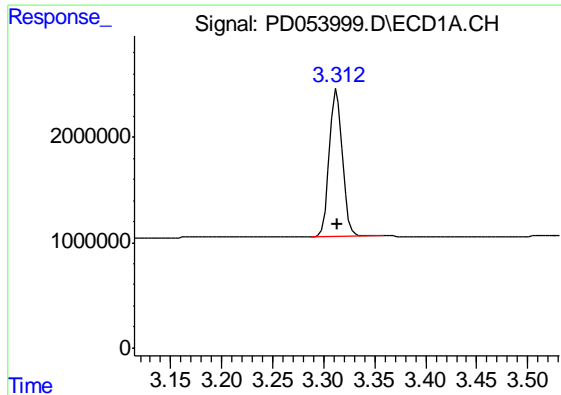
Instrument :
 ECD_D
Client Sampled :
 PEM

Manual Integrations
APPROVED
 Ankita
 7/19/2019 12:03:44 PM

Integration File signal 1: autoint1.e
 Integration File signal 2: autoint2.e
 Quant Time: Jul 19 05:09:59 2019
 Quant Method : Z:\pestpcbsrv\HPCHEM1\ECD_D\Method\PD071919.M
 Quant Title : GC Extractables
 QLast Update : Fri Jul 19 04:33:23 2019
 Response via : Initial Calibration
 Integrator: ChemStation 6890 Scale Mode: Large solvent peaks clipped

Volume Inj. : 2 µl
 Signal #1 Phase : ZB-MR2 Signal #2 Phase: ZB-MR1
 Signal #1 Info : 30M x 0.32mm x0.2 Signal #2 Info : 30M x 0.32mm x 0.50µm





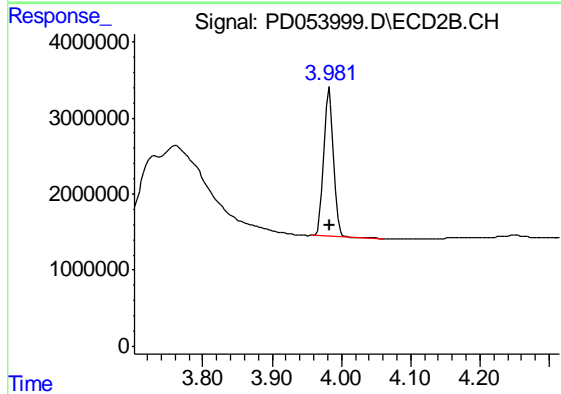
#1 Tetrachloro-m-xylene

R.T.: 3.313 min
 Delta R.T.: 0.000 min
 Response: 12378337
 Conc: 21.51 ng/ml

Instrument :
 ECD_D
 ClientSampled :
 PEM

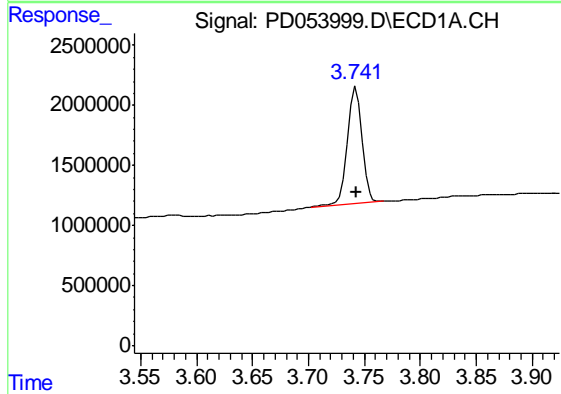
Manual Integrations
 APPROVED

Ankita
 7/19/2019 12:03:44 PM



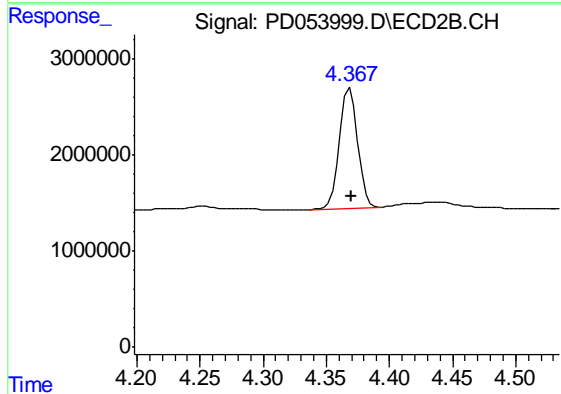
#1 Tetrachloro-m-xylene

R.T.: 3.983 min
 Delta R.T.: 0.000 min
 Response: 19127476
 Conc: 21.96 ng/ml



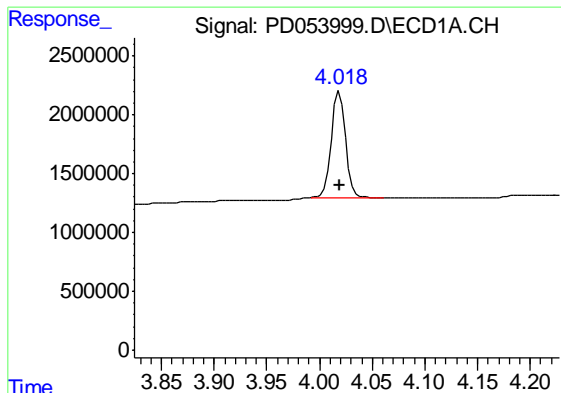
#2 alpha-BHC

R.T.: 3.742 min
 Delta R.T.: 0.000 min
 Response: 8561075
 Conc: 9.88 ng/ml



#2 alpha-BHC

R.T.: 4.369 min
 Delta R.T.: 0.000 min
 Response: 12552251
 Conc: 9.95 ng/ml



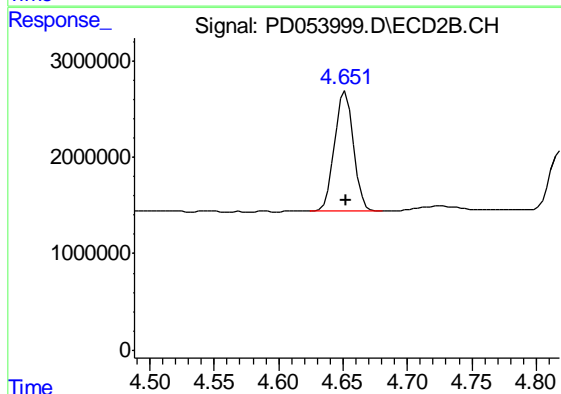
#3 gamma-BHC (Lindane)

R.T.: 4.019 min
 Delta R.T.: 0.000 min
 Response: 8506768
 Conc: 10.37 ng/ml

Instrument :
 ECD_D
 ClientSampleId :
 PEM

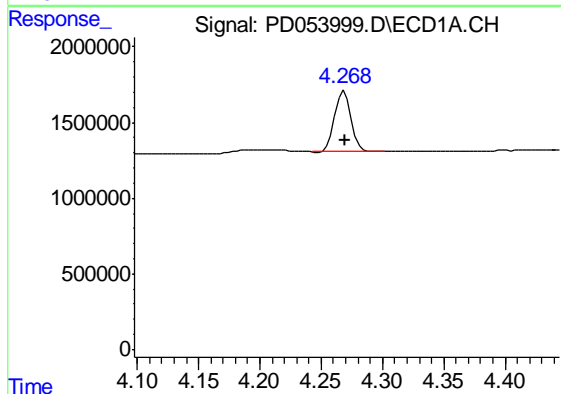
Manual Integrations
 APPROVED

Ankita
 7/19/2019 12:03:44 PM



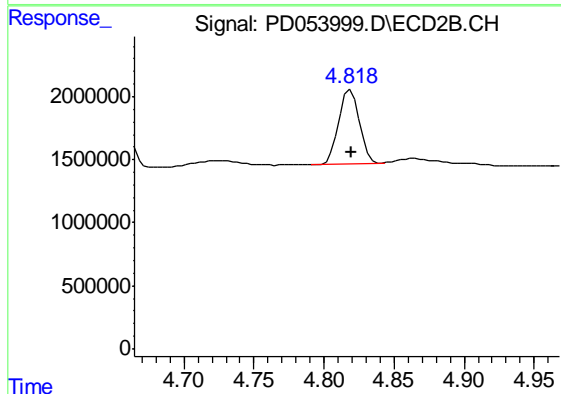
#3 gamma-BHC (Lindane)

R.T.: 4.652 min
 Delta R.T.: 0.000 min
 Response: 12827332
 Conc: 10.46 ng/ml



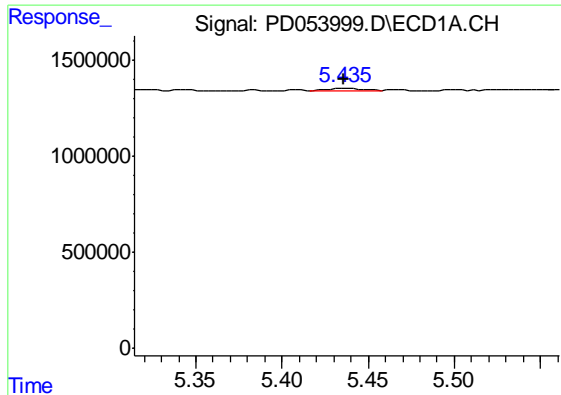
#6 beta-BHC

R.T.: 4.269 min
 Delta R.T.: 0.000 min
 Response: 3753332
 Conc: 10.66 ng/ml



#6 beta-BHC

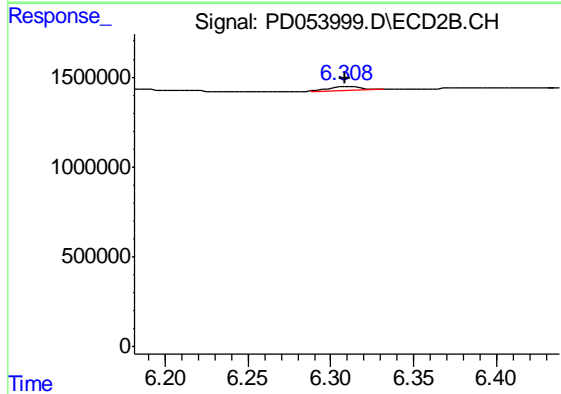
R.T.: 4.819 min
 Delta R.T.: 0.000 min
 Response: 6107406
 Conc: 10.91 ng/ml



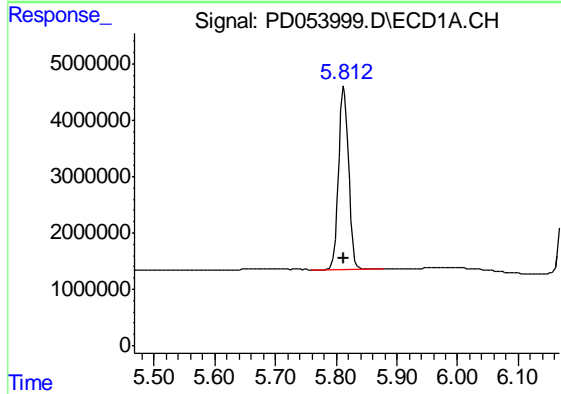
#12 4,4'-DDE
 R.T.: 5.435 min
 Delta R.T.: -0.001 min
 Response: 135644
 Conc: 0.17 ng/ml m

Instrument :
 ECD_D
 ClientSampled :
 PEM

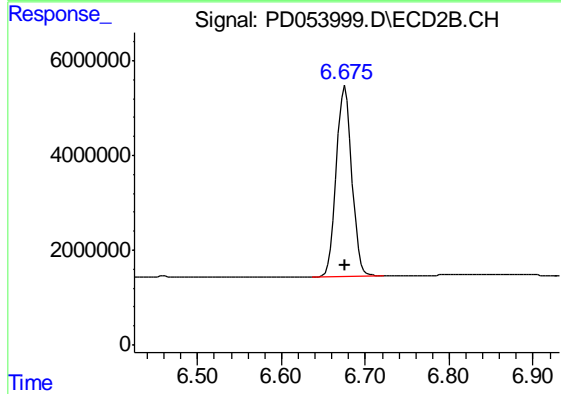
Manual Integrations
 APPROVED
 Ankita
 7/19/2019 12:03:44 PM



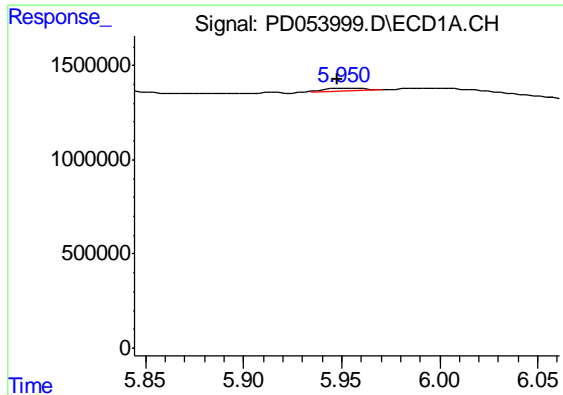
#12 4,4'-DDE
 R.T.: 6.308 min
 Delta R.T.: 0.000 min
 Response: 292032
 Conc: 0.24 ng/ml m



#14 Endrin
 R.T.: 5.813 min
 Delta R.T.: 0.000 min
 Response: 37539574
 Conc: 50.13 ng/ml



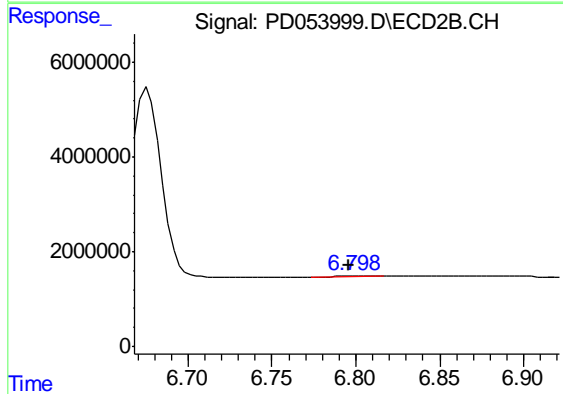
#14 Endrin
 R.T.: 6.676 min
 Delta R.T.: 0.000 min
 Response: 51970009
 Conc: 49.58 ng/ml



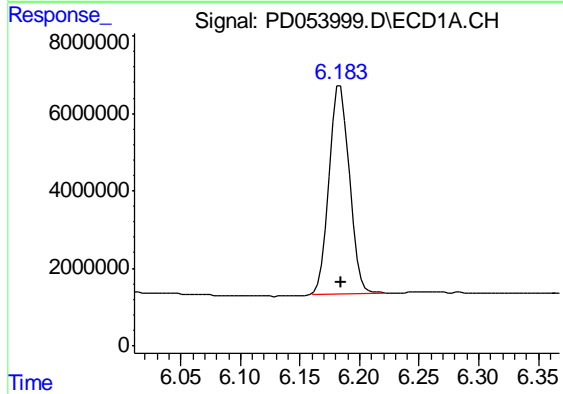
#16 4,4'-DDD
 R.T.: 5.950 min
 Delta R.T.: 0.002 min
 Response: 159449
 Conc: 0.27 ng/ml m

Instrument :
 ECD_D
ClientSampled :
 PEM

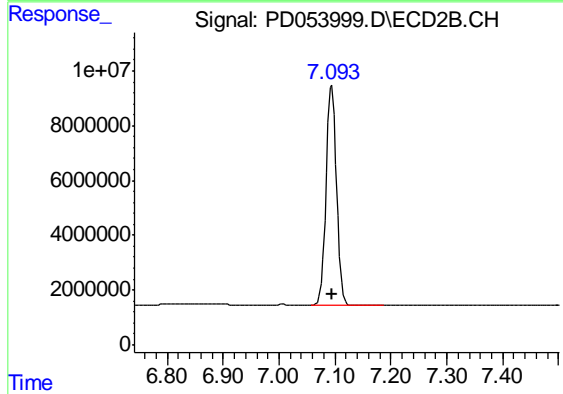
Manual Integrations
APPROVED
 Ankita
 7/19/2019 12:03:44 PM



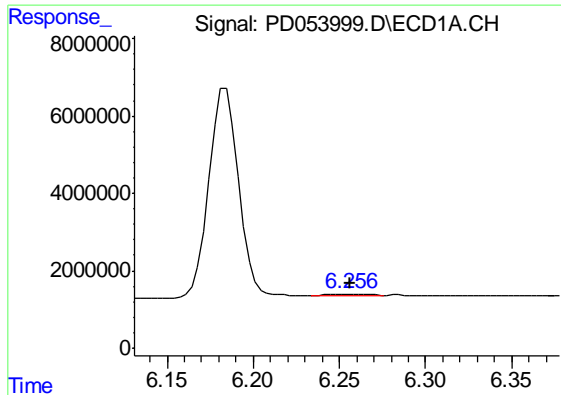
#16 4,4'-DDD
 R.T.: 6.798 min
 Delta R.T.: 0.002 min
 Response: 273810
 Conc: 0.27 ng/ml m



#17 4,4'-DDT
 R.T.: 6.184 min
 Delta R.T.: 0.000 min
 Response: 63518525
 Conc: 110.30 ng/ml



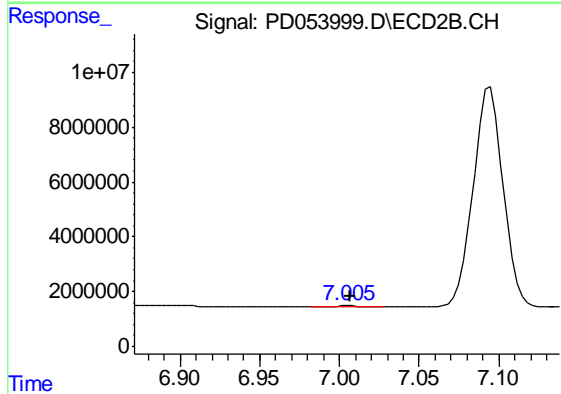
#17 4,4'-DDT
 R.T.: 7.095 min
 Delta R.T.: 0.000 min
 Response: 105055838
 Conc: 106.64 ng/ml



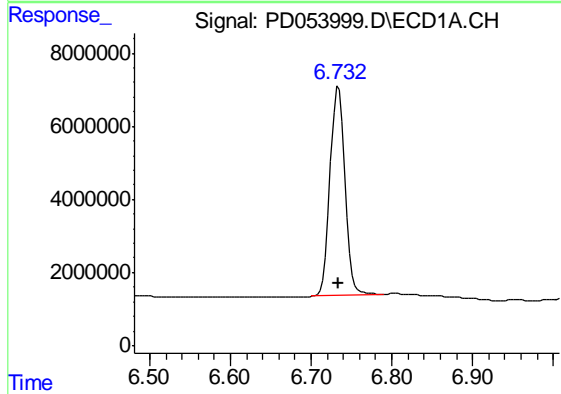
#18 Endrin aldehyde
 R.T.: 6.256 min
 Delta R.T.: 0.000 min
 Response: 332249
 Conc: 0.52 ng/ml m

Instrument :
 ECD_D
ClientSampled :
 PEM

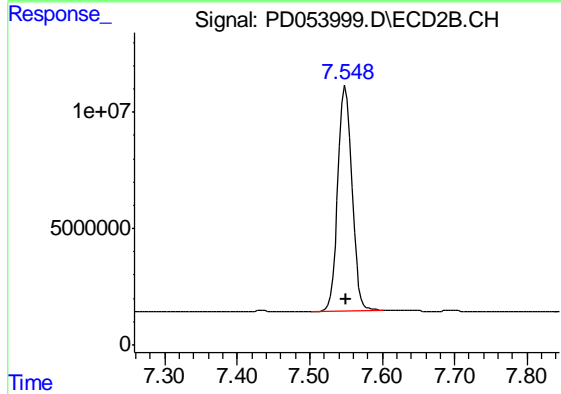
Manual Integrations
APPROVED
 Ankita
 7/19/2019 12:03:44 PM



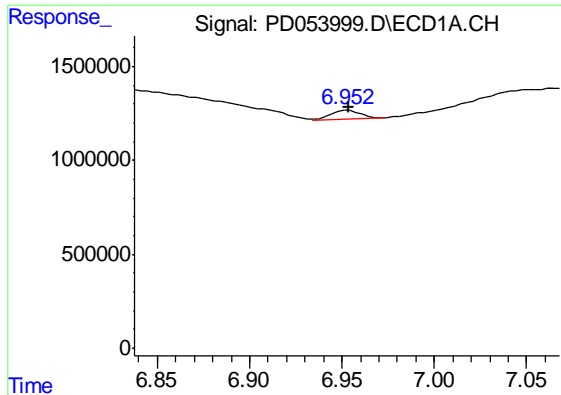
#18 Endrin aldehyde
 R.T.: 7.005 min
 Delta R.T.: -0.002 min
 Response: 405473
 Conc: 0.41 ng/ml m



#20 Methoxychlor
 R.T.: 6.732 min
 Delta R.T.: -0.002 min
 Response: 73405640
 Conc: 256.86 ng/ml m



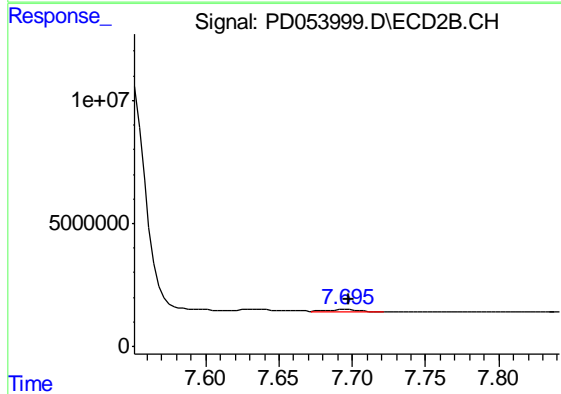
#20 Methoxychlor
 R.T.: 7.550 min
 Delta R.T.: 0.000 min
 Response: 129936316
 Conc: 242.17 ng/ml



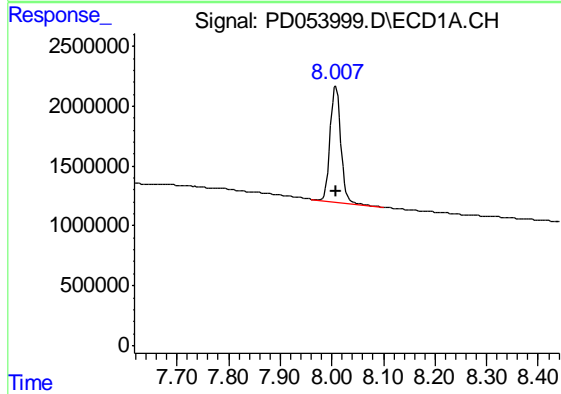
#21 Endrin ketone
 R.T.: 6.952 min
 Delta R.T.: -0.002 min
 Response: 529642
 Conc: 0.66 ng/ml m

Instrument :
 ECD_D
ClientSampled :
 PEM

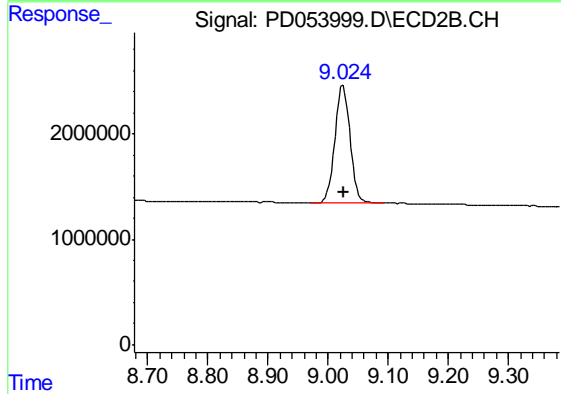
Manual Integrations
APPROVED
 Ankita
 7/19/2019 12:03:44 PM



#21 Endrin ketone
 R.T.: 7.695 min
 Delta R.T.: -0.003 min
 Response: 932908
 Conc: 0.77 ng/ml m



#28 Decachlorobiphenyl
 R.T.: 8.008 min
 Delta R.T.: 0.000 min
 Response: 14091807
 Conc: 20.93 ng/ml



#28 Decachlorobiphenyl
 R.T.: 9.025 min
 Delta R.T.: 0.000 min
 Response: 19744568
 Conc: 21.30 ng/ml