

Data Path : Z:\pestpcbsrv\HPCHEM1\ECD\_D\Data\PD072023\  
 Data File : PD076926.D  
 Signal(s) : Signal #1: ECD1A.ch Signal #2: ECD2B.ch  
 Acq On : 20 Jul 2023 15:06  
 Operator : AR\AJ  
 Sample : 03534-18  
 Misc :  
 ALS Vial : 23 Sample Multiplier: 1

**Instrument :**  
 ECD\_D  
**ClientSampleId :**  
 A4736

**Manual Integrations**  
**APPROVED**

Reviewed By :Abdul Mirza 07/21/2023  
 Supervised By :Ankita Jodhani 07/21/2023

Integration File signal 1: autoint1.e  
 Integration File signal 2: autoint2.e  
 Quant Time: Jul 20 21:43:26 2023  
 Quant Method : Z:\pestpcbsrv\HPCHEM1\ECD\_D\Method\PD071423CLP.M  
 Quant Title : GC Extractables  
 QLast Update : Fri Jul 14 14:58:34 2023  
 Response via : Initial Calibration  
 Integrator: ChemStation

Volume Inj. : 1 µl  
 Signal #1 Phase : ZB-MR1 Signal #2 Phase: ZB-MR2  
 Signal #1 Info : 30M x 0.32mm x0.5 Signal #2 Info : 30M x 0.32mm x 0.25µm

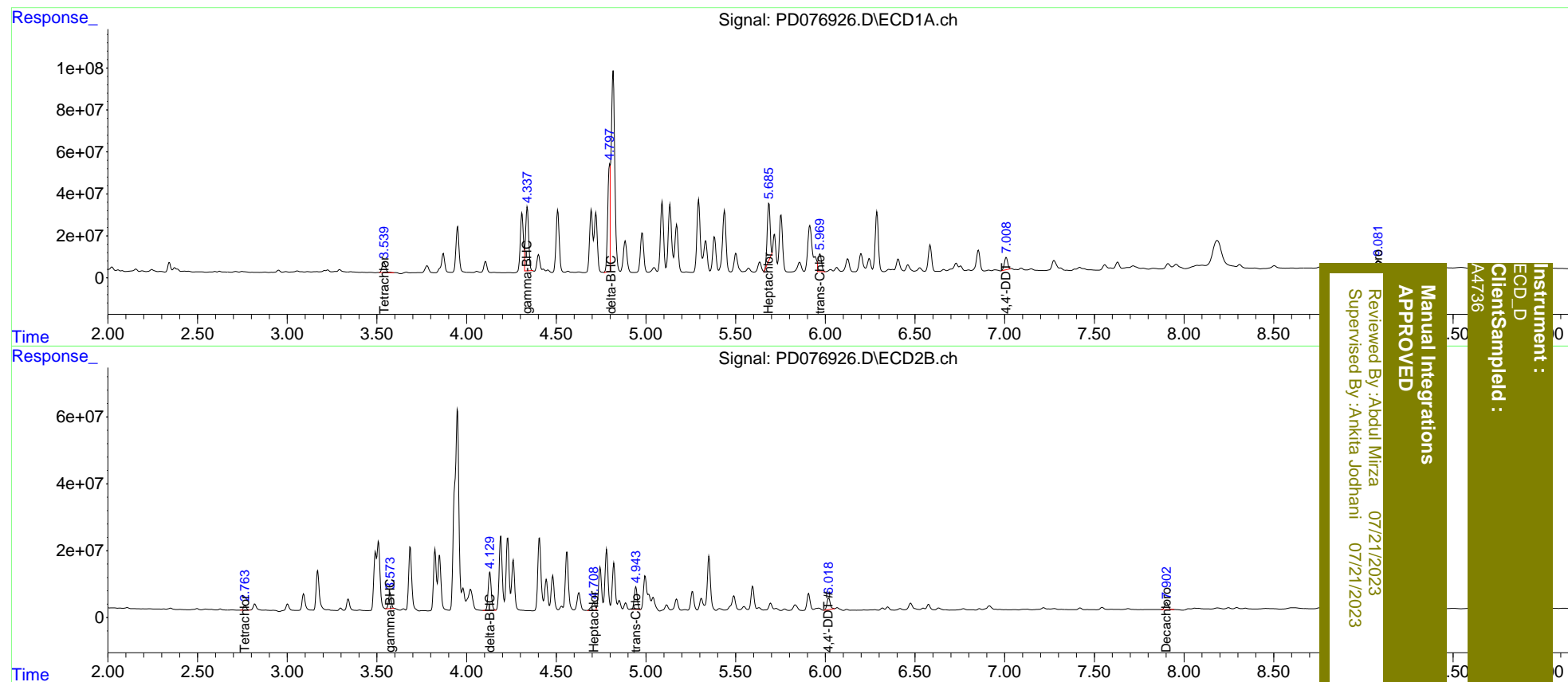
Compound	RT#1	RT#2	Resp#1	Resp#2	ng/ml	ng/ml
-----						
System Monitoring Compounds						
1) SA Tetrachlo...	3.540	2.765	68487363	15433103	32.194	14.458 #
27) SA Decachlor...	9.082	7.902	64532685	28240896	26.562	26.345m
Target Compounds						
3) MA gamma-BHC...	4.337	3.573	350.7E6	48747611	105.728m	32.539m#
7) B delta-BHC	4.797	4.130	526.6E6	134.9E6	157.035m	88.394 #
8) B Heptachlo...	5.685	4.708	304.5E6	32925286	101.626m	23.403m#
10) B trans-Chl...	5.969	4.943	104.8E6	76087036	34.078m	56.268m#
17) MA 4,4'-DDT	7.008	6.018	75963287	43673081	34.022m	46.620m#
-----						

(f)=RT Delta > 1/2 Window (#)=Amounts differ by > 25% (m)=manual int.

Data Path : Z:\pestpcbsrv\HPCHEM1\ECD\_D\Data\PD072023\  
 Data File : PD076926.D  
 Signal(s) : Signal #1: ECD1A.ch Signal #2: ECD2B.ch  
 Acq On : 20 Jul 2023 15:06  
 Operator : AR\AJ  
 Sample : 03534-18  
 Misc :  
 ALS Vial : 23 Sample Multiplier: 1

Integration File signal 1: autoint1.e  
 Integration File signal 2: autoint2.e  
 Quant Time: Jul 20 21:43:26 2023  
 Quant Method : Z:\pestpcbsrv\HPCHEM1\ECD\_D\Method\PD071423CLP.M  
 Quant Title : GC Extractables  
 QLast Update : Fri Jul 14 14:58:34 2023  
 Response via : Initial Calibration  
 Integrator: ChemStation

Volume Inj. : 1 µl  
 Signal #1 Phase : ZB-MR1 Signal #2 Phase: ZB-MR2  
 Signal #1 Info : 30M x 0.32mm x0.5 Signal #2 Info : 30M x 0.32mm x 0.25µm



Instrument : ECD\_D  
 ClientSampled : A4736  
 Manual Integrations APPROVED  
 Reviewed By :Abdul Mirza 07/21/2023  
 Supervised By :Ankita Jodhani 07/21/2023