

Data Path : Z:\pestpcbsrv\HPCHEM1\ECD_D\Data\PD072125\
 Data File : PD089551.D
 Signal(s) : Signal #1: ECD1A.ch Signal #2: ECD2B.ch
 Acq On : 21 Jul 2025 15:19
 Operator : AR\AJ
 Sample : PTOXICC750
 Misc :
 ALS Vial : 16 Sample Multiplier: 1

Instrument :
 ECD_D
 ClientSampleId :
 PTOXICC750

Integration File signal 1: autoint1.e
 Integration File signal 2: autoint2.e
 Quant Time: Jul 22 05:11:38 2025
 Quant Method : Z:\pestpcbsrv\HPCHEM1\ECD_D\Method\DTX072125.M
 Quant Title : GC Extractables
 QLast Update : Tue Jul 22 05:10:39 2025
 Response via : Initial Calibration
 Integrator: ChemStation

Volume Inj. : 1 µl
 Signal #1 Phase : ZB-MR1 Signal #2 Phase: ZB-MR2
 Signal #1 Info : 30M x 0.32mm x 0. Signal #2 Info : 30M x 0.32mm x 0.25µm

Compound	RT#1	RT#2	Resp#1	Resp#2	ng/ml	ng/ml

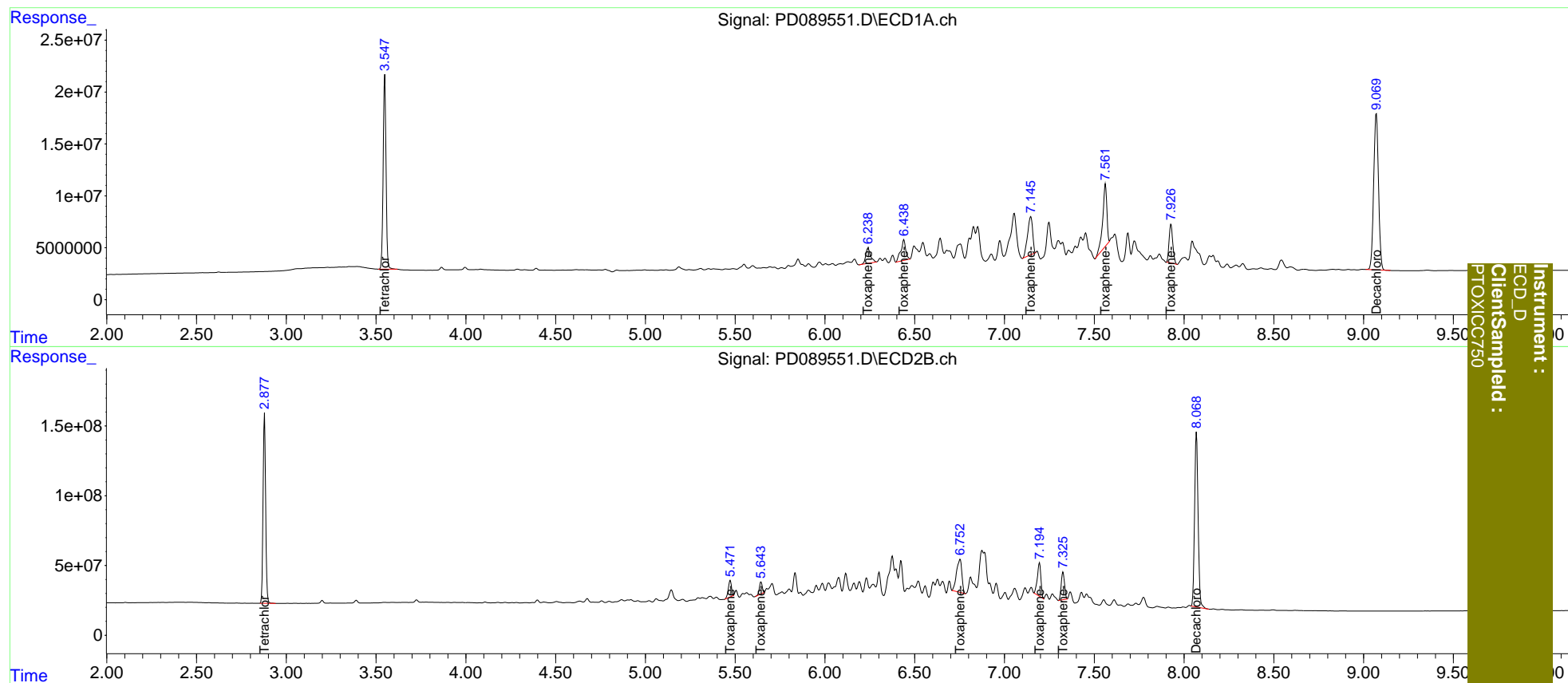
System Monitoring Compounds						
1) SA Tetrachlo...	3.548	2.879	207.9E6	1362.1E6	73.228	71.577
7) SA Decachlor...	9.071	8.069	281.6E6	1697.3E6	71.430	71.466
Target Compounds						
2) Toxaphene-1	6.240	5.472	27417071	142.1E6	709.361	710.297
3) Toxaphene-2	6.440	5.644	37347055	95080064	703.783	730.054
4) Toxaphene-3	7.146	6.753	72228611	484.7E6	715.873	726.350
5) Toxaphene-4	7.562	7.195	95775455	330.2E6	725.622	723.047
6) Toxaphene-5	7.927	7.326	53067618	250.5E6	717.859	730.425

(f)=RT Delta > 1/2 Window (#)=Amounts differ by > 25% (m)=manual int.

Data Path : Z:\pestpcbsrv\HPCHEM1\ECD_D\Data\PD072125\
 Data File : PD089551.D
 Signal(s) : Signal #1: ECD1A.ch Signal #2: ECD2B.ch
 Acq On : 21 Jul 2025 15:19
 Operator : AR\AJ
 Sample : PTOXICC750
 Misc :
 ALS Vial : 16 Sample Multiplier: 1

Integration File signal 1: autoint1.e
 Integration File signal 2: autoint2.e
 Quant Time: Jul 22 05:11:38 2025
 Quant Method : Z:\pestpcbsrv\HPCHEM1\ECD_D\Method\DTX072125.M
 Quant Title : GC Extractables
 QLast Update : Tue Jul 22 05:10:39 2025
 Response via : Initial Calibration
 Integrator: ChemStation

Volume Inj. : 1 µl
 Signal #1 Phase : ZB-MR1 Signal #2 Phase: ZB-MR2
 Signal #1 Info : 30M x 0.32mm x 0. Signal #2 Info : 30M x 0.32mm x0.25µm



Instrument :
 ECD_D
 ClientSampled :
 PTOXICC750