

Data Path : Z:\pestpcbsrv\HPCHEM1\ECD_D\Data\PD072125\
 Data File : PD089553.D
 Signal(s) : Signal #1: ECD1A.ch Signal #2: ECD2B.ch
 Acq On : 21 Jul 2025 15:46
 Operator : AR\AJ
 Sample : PTOXICC250
 Misc :
 ALS Vial : 18 Sample Multiplier: 1

Instrument :

ECD_D

ClientSampleId :

PTOXICC250

Manual Integrations**APPROVED**

Reviewed By :Abdul Mirza 07/22/2025

Supervised By :mohammad ahmed 07/23/2025

Integration File signal 1: autoint1.e
 Integration File signal 2: autoint2.e
 Quant Time: Jul 22 05:12:02 2025
 Quant Method : Z:\pestpcbsrv\HPCHEM1\ECD_D\Method\DTX072125.M
 Quant Title : GC Extractables
 QLast Update : Tue Jul 22 05:10:39 2025
 Response via : Initial Calibration
 Integrator: ChemStation

Volume Inj. : 1 µl
 Signal #1 Phase : ZB-MR1 Signal #2 Phase: ZB-MR2
 Signal #1 Info : 30M x 0.32mm x 0. Signal #2 Info : 30M x 0.32mm x 0.25µm

Compound	RT#1	RT#2	Resp#1	Resp#2	ng/ml	ng/ml

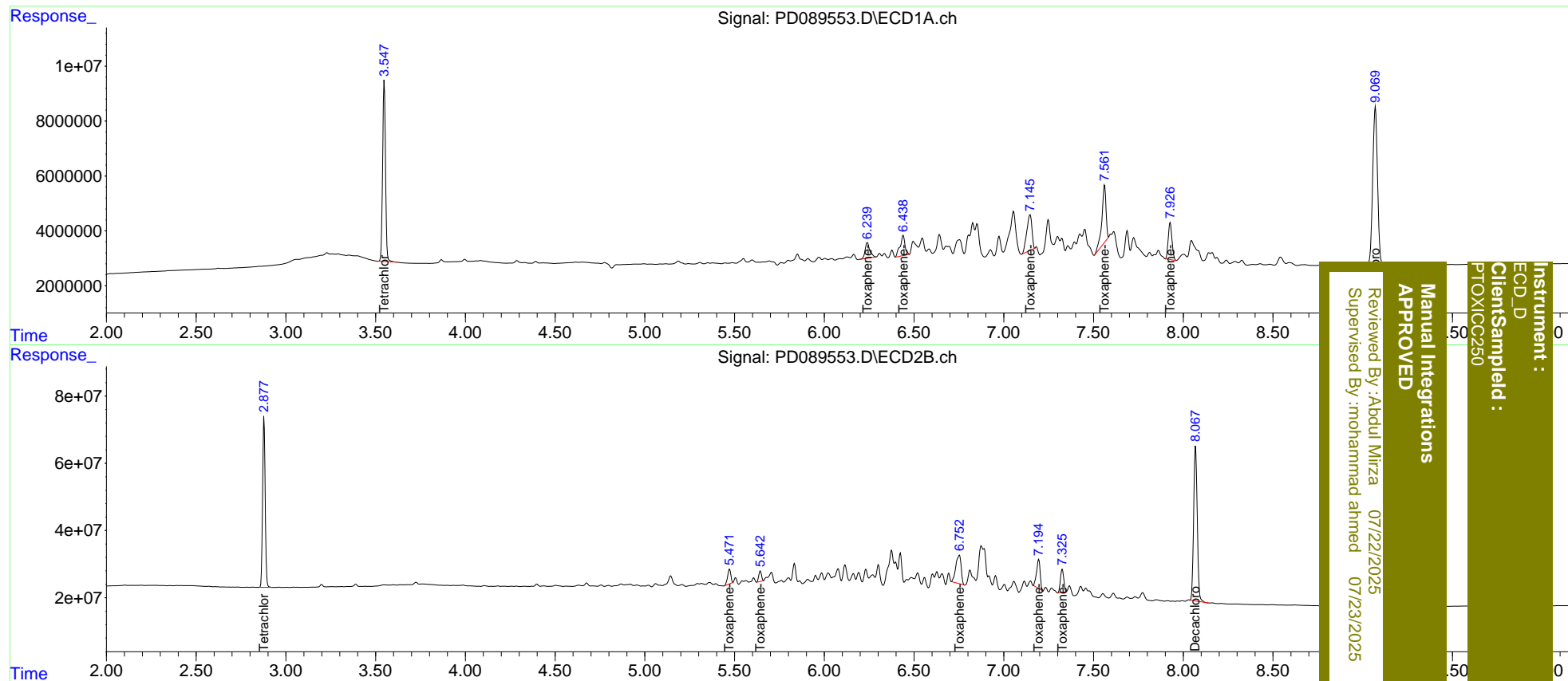
System Monitoring Compounds						
1) SA Tetrachlo...	3.548	2.878	73280569	504.5E6	25.805	26.508
7) SA Decachlor...	9.071	8.069	106.8E6	641.0E6	27.075	26.989
Target Compounds						
2) Toxaphene-1	6.240	5.472	10337910	54017760	267.472	269.954
3) Toxaphene-2	6.440	5.642	13964838	32334772	263.159	248.276m
4) Toxaphene-3	7.147	6.753	26015436	173.8E6	257.844	260.507
5) Toxaphene-4	7.562	7.195	33180498	121.3E6	251.385	265.618
6) Toxaphene-5	7.927	7.326	19306400	87708109	261.163	255.762

(f)=RT Delta > 1/2 Window (#)=Amounts differ by > 25% (m)=manual int.

Data Path : Z:\pestpcbsrv\HPCHEM1\ECD_D\Data\PD072125\
 Data File : PD089553.D
 Signal(s) : Signal #1: ECD1A.ch Signal #2: ECD2B.ch
 Acq On : 21 Jul 2025 15:46
 Operator : AR\AJ
 Sample : PTOXICC250
 Misc :
 ALS Vial : 18 Sample Multiplier: 1

Integration File signal 1: autoint1.e
 Integration File signal 2: autoint2.e
 Quant Time: Jul 22 05:12:02 2025
 Quant Method : Z:\pestpcbsrv\HPCHEM1\ECD_D\Method\DTX072125.M
 Quant Title : GC Extractables
 QLast Update : Tue Jul 22 05:10:39 2025
 Response via : Initial Calibration
 Integrator: ChemStation

Volume Inj. : 1 µl
 Signal #1 Phase : ZB-MR1 Signal #2 Phase: ZB-MR2
 Signal #1 Info : 30M x 0.32mm x 0. Signal #2 Info : 30M x 0.32mm x0.25µm



Instrument : ECD_D
 Client Sampled : PTOXICC250
 Manual Integrations APPROVED
 Reviewed By: Abdul Mirza 07/22/2025
 Supervised By: mohammad ahmed 07/23/2025