

Data Path : Z:\pestpcbsrv\HPCHEM1\ECD_D\Data\PD072319\
Data File : PD054071.D
Signal(s) : Signal #1: ECD1A.CH Signal #2: ECD2B.CH
Acq On : 23 Jul 2019 9:39
Operator : SM\AJ
Sample : K3917-11
Misc :
ALS Vial : 6 Sample Multiplier: 1

Instrument :
ECD_D
ClientSampleId :
PEST-GPC2-BLANK

Integration File signal 1: autoint1.e
Integration File signal 2: autoint2.e
Quant Time: Jul 24 01:02:01 2019
Quant Method : Z:\pestpcbsrv\HPCHEM1\ECD_D\Method\PD071819CLP.M
Quant Title : GC Extractables
QLast Update : Fri Jul 19 07:29:30 2019
Response via : Initial Calibration
Integrator: ChemStation 6890 Scale Mode: Large solvent peaks clipped

Volume Inj. : 1 µl
Signal #1 Phase : ZB-MR2 Signal #2 Phase: ZB-MR1
Signal #1 Info : 30M x 0.32mm x 0.2 Signal #2 Info : 30M x 0.32mm x 0.50µm

Compound	RT#1	RT#2	Resp#1	Resp#2	ng/ml	ng/ml
----------	------	------	--------	--------	-------	-------

System Monitoring Compounds

Target Compounds

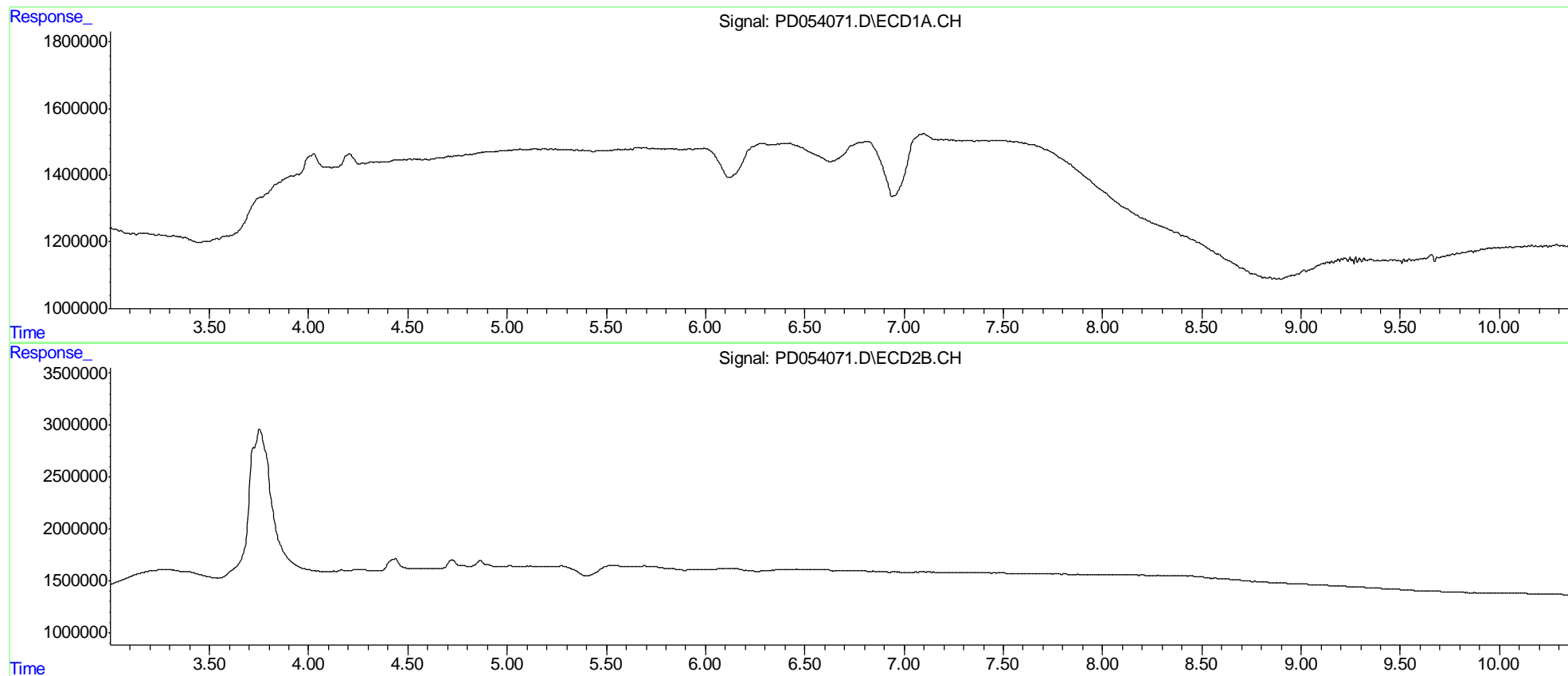
(f)=RT Delta > 1/2 Window (#)=Amounts differ by > 25% (m)=manual int.

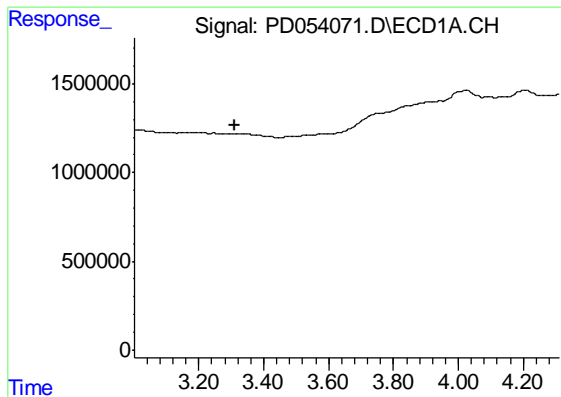
Data Path : Z:\pestpcbsrv\HPCHEM1\ECD_D\Data\PD072319\
Data File : PD054071.D
Signal(s) : Signal #1: ECD1A.CH Signal #2: ECD2B.CH
Acq On : 23 Jul 2019 9:39
Operator : SM\AJ
Sample : K3917-11
Misc :
ALS Vial : 6 Sample Multiplier: 1

Instrument :
ECD_D
ClientSampled :
PEST-GPC2-BLANK

Integration File signal 1: autoint1.e
Integration File signal 2: autoint2.e
Quant Time: Jul 24 01:02:01 2019
Quant Method : Z:\pestpcbsrv\HPCHEM1\ECD_D\Method\PD071819CLP.M
Quant Title : GC Extractables
QLast Update : Fri Jul 19 07:29:30 2019
Response via : Initial Calibration
Integrator: ChemStation 6890 Scale Mode: Large solvent peaks clipped

Volume Inj. : 1 µl
Signal #1 Phase : ZB-MR2 Signal #2 Phase: ZB-MR1
Signal #1 Info : 30M x 0.32mm x0.2 Signal #2 Info : 30M x 0.32mm x 0.50µm

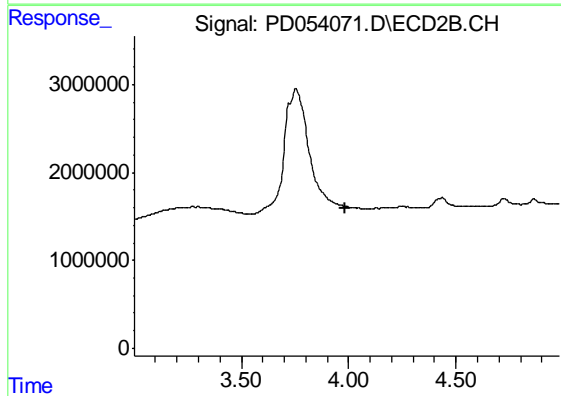




#1 Tetrachloro-m-xylene

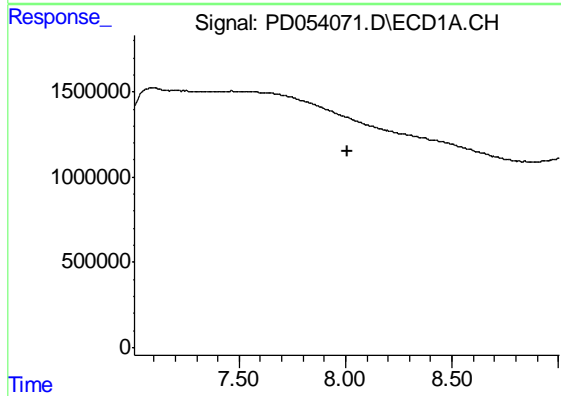
R.T.: 0.000 min
 Exp R.T. : 3.313 min
 Response: 0
 Conc: N.D.

Instrument :
 ECD_D
 ClientSampleId :
 PEST-GPC2-BLANK



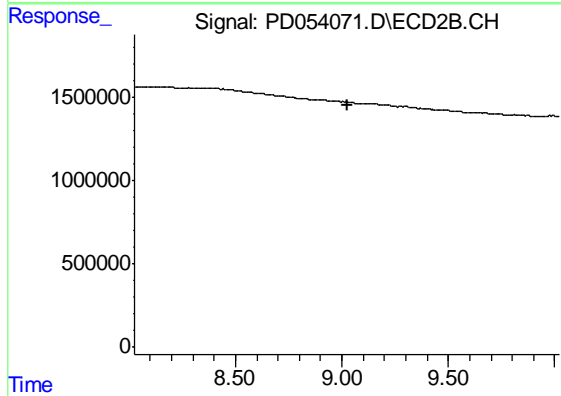
#1 Tetrachloro-m-xylene

R.T.: 0.000 min
 Exp R.T. : 3.983 min
 Response: 0
 Conc: N.D.



#27 Decachlorobiphenyl

R.T.: 0.000 min
 Exp R.T. : 8.008 min
 Response: 0
 Conc: N.D.



#27 Decachlorobiphenyl

R.T.: 0.000 min
 Exp R.T. : 9.024 min
 Response: 0
 Conc: N.D.