

Data Path : Z:\pestpcbsrv\HPCHEM1\ECD_D\Data\PD072324\
Data File : PD084058.D
Signal(s) : Signal #1: ECD1A.ch Signal #2: ECD2B.ch
Acq On : 23 Jul 2024 10:08
Operator : AR\AJ
Sample : P3323-06
Misc :
ALS Vial : 32 Sample Multiplier: 1

Instrument :
ECD_D
ClientSampleId :
PEST-GPC-BLANK

Integration File signal 1: autoint1.e
Integration File signal 2: autoint2.e
Quant Time: Jul 24 01:13:26 2024
Quant Method : Z:\pestpcbsrv\HPCHEM1\ECD_D\Method\PD062624CLP.M
Quant Title : GC Extractables
QLast Update : Thu Jun 27 04:33:52 2024
Response via : Initial Calibration
Integrator: ChemStation

Volume Inj. : 1 µl
Signal #1 Phase : ZB-MR1 Signal #2 Phase: ZB-MR2
Signal #1 Info : 30M x 0.32mm x0.5 Signal #2 Info : 30M x 0.32mm x 0.25µm

Compound	RT#1	RT#2	Resp#1	Resp#2	ng/ml	ng/ml
----------	------	------	--------	--------	-------	-------

System Monitoring Compounds

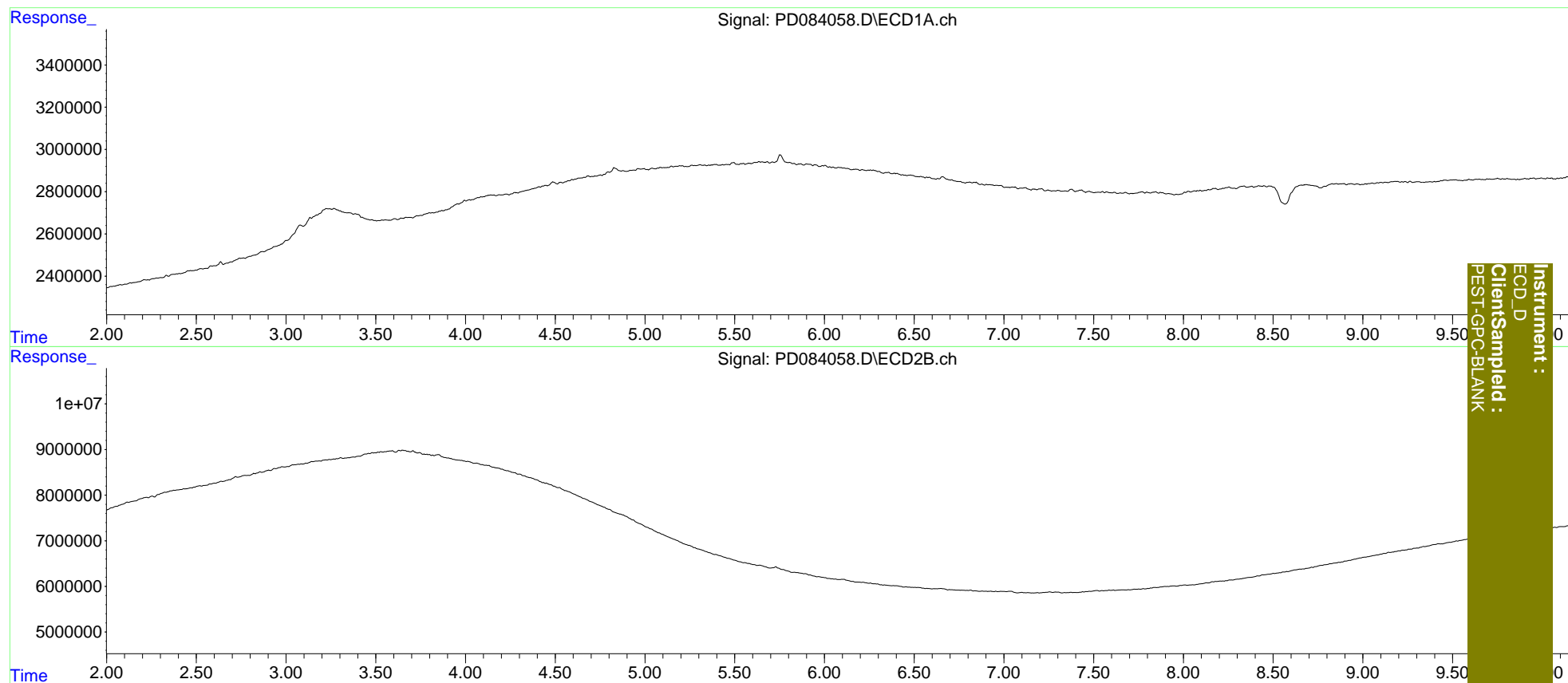
Target Compounds

(f)=RT Delta > 1/2 Window (#)=Amounts differ by > 25% (m)=manual int.

Data Path : Z:\pestpcbsrv\HPCHEM1\ECD_D\Data\PD072324\
Data File : PD084058.D
Signal(s) : Signal #1: ECD1A.ch Signal #2: ECD2B.ch
Acq On : 23 Jul 2024 10:08
Operator : AR\AJ
Sample : P3323-06
Misc :
ALS Vial : 32 Sample Multiplier: 1

Integration File signal 1: autoint1.e
Integration File signal 2: autoint2.e
Quant Time: Jul 24 01:13:26 2024
Quant Method : Z:\pestpcbsrv\HPCHEM1\ECD_D\Method\PD062624CLP.M
Quant Title : GC Extractables
QLast Update : Thu Jun 27 04:33:52 2024
Response via : Initial Calibration
Integrator: ChemStation

Volume Inj. : 1 µl
Signal #1 Phase : ZB-MR1 Signal #2 Phase: ZB-MR2
Signal #1 Info : 30M x 0.32mm x 0.5 Signal #2 Info : 30M x 0.32mm x 0.25µm



Instrument :
ECD_D
ClientSampleId :
PEST-GPC-BLANK