

Data Path : Z:\pestpcbsrv\HPCHEM1\ECD_D\Data\PD072424\
 Data File : PD084084.D
 Signal(s) : Signal #1: ECD1A.ch Signal #2: ECD2B.ch
 Acq On : 24 Jul 2024 14:51
 Operator : AR\AJ
 Sample : PEM148
 Misc :
 ALS Vial : 3 Sample Multiplier: 1

Instrument :
 ECD_D
ClientSampleId :
 PEM063

Manual Integrations
APPROVED
 Reviewed By :Abdul Mirza 07/26/2024
 Supervised By :Ankita Jodhani 07/26/2024

Integration File signal 1: autoint1.e
 Integration File signal 2: autoint2.e
 Quant Time: Jul 25 10:57:35 2024
 Quant Method : Z:\pestpcbsrv\HPCHEM1\ECD_D\Method\PD072424CLP.M
 Quant Title : GC Extractables
 QLast Update : Thu Jul 25 10:53:26 2024
 Response via : Initial Calibration
 Integrator: ChemStation

Volume Inj. : 1 µl
 Signal #1 Phase : ZB-MR1 Signal #2 Phase: ZB-MR2
 Signal #1 Info : 30M x 0.32mm x0.5 Signal #2 Info : 30M x 0.32mm x 0.25µm

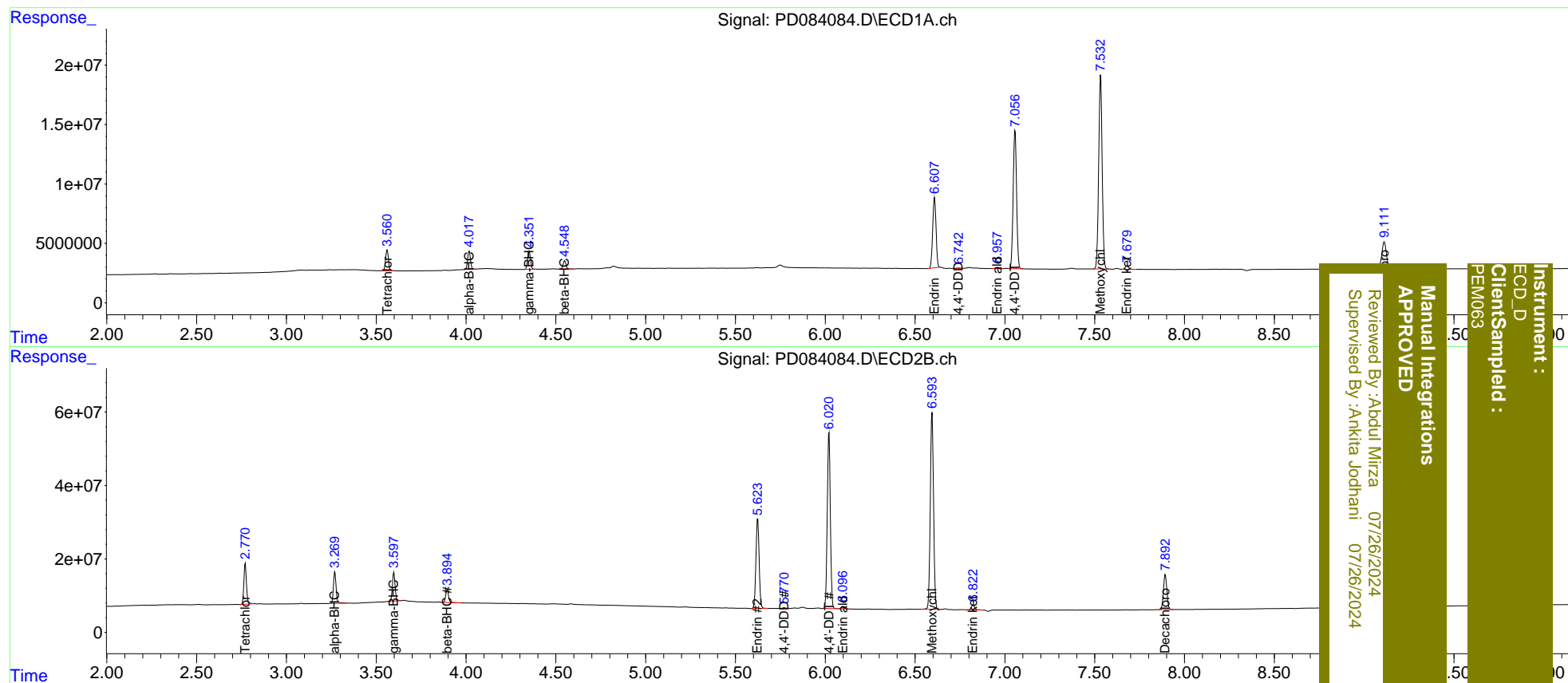
| Compound | RT#1 | RT#2 | Resp#1 | Resp#2 | ng/ml | ng/ml |
|-----------------------------|-------|-------|----------|----------|---------|---------|
| ----- | | | | | | |
| System Monitoring Compounds | | | | | | |
| 1) SA Tetrachlo... | 3.561 | 2.771 | 19324768 | 112.8E6 | 21.583 | 21.620 |
| 27) SA Decachlor... | 9.112 | 7.893 | 41089962 | 127.0E6 | 21.408 | 22.035 |
| Target Compounds | | | | | | |
| 2) A alpha-BHC | 4.018 | 3.270 | 17055982 | 89304611 | 10.251 | 10.447 |
| 3) MA gamma-BHC... | 4.352 | 3.598 | 17207120 | 82189674 | 10.416 | 10.477 |
| 6) B beta-BHC | 4.549 | 3.896 | 7814003 | 38314771 | 10.455 | 10.722 |
| 14) MA Endrin | 6.609 | 5.624 | 76169907 | 303.4E6 | 47.790 | 49.747 |
| 16) A 4,4'-DDD | 6.742 | 5.770 | 380602 | 2322424 | 0.290m | 0.444m# |
| 17) MA 4,4'-DDT | 7.057 | 6.021 | 154.2E6 | 572.0E6 | 108.854 | 109.524 |
| 18) B Endrin al... | 6.959 | 6.096 | 1550308 | 8232709 | 1.236 | 1.861m# |
| 20) A Methoxychlor | 7.533 | 6.595 | 219.1E6 | 677.1E6 | 260.637 | 262.472 |
| 21) B Endrin ke... | 7.680 | 6.824 | 3637948 | 16905192 | 2.019 | 2.715 # |

(f)=RT Delta > 1/2 Window (#)=Amounts differ by > 25% (m)=manual int.

Data Path : Z:\pestpcbsrv\HPCHEM1\ECD_D\Data\PD072424\
 Data File : PD084084.D
 Signal(s) : Signal #1: ECD1A.ch Signal #2: ECD2B.ch
 Acq On : 24 Jul 2024 14:51
 Operator : AR\AJ
 Sample : PEM148
 Misc :
 ALS Vial : 3 Sample Multiplier: 1

Integration File signal 1: autoint1.e
 Integration File signal 2: autoint2.e
 Quant Time: Jul 25 10:57:35 2024
 Quant Method : Z:\pestpcbsrv\HPCHEM1\ECD_D\Method\PD072424CLP.M
 Quant Title : GC Extractables
 QLast Update : Thu Jul 25 10:53:26 2024
 Response via : Initial Calibration
 Integrator: ChemStation

Volume Inj. : 1 µl
 Signal #1 Phase : ZB-MR1 Signal #2 Phase: ZB-MR2
 Signal #1 Info : 30M x 0.32mm x0.5 Signal #2 Info : 30M x 0.32mm x 0.25µm



Instrument : ECD_D
 Client/Sample : PEM063
 Manual Integrations APPROVED
 Reviewed By : Aboul Mirza 07/26/2024
 Supervised By : Ankita Jodhani 07/26/2024