

Data Path : Z:\pestpcbsrv\HPCHEM1\ECD\_D\Data\PD072523\  
 Data File : PD076943.D  
 Signal(s) : Signal #1: ECD1A.ch Signal #2: ECD2B.ch  
 Acq On : 25 Jul 2023 08:00  
 Operator : AR\AJ  
 Sample : PEM135  
 Misc :  
 ALS Vial : 3 Sample Multiplier: 1

Instrument :  
 ECD\_D  
 ClientSampleId :  
 PEM145

Manual Integrations  
 APPROVED

Reviewed By :Abdul Mirza 07/26/2023  
 Supervised By :Ankita Jodhani 07/26/2023

Integration File signal 1: autoint1.e  
 Integration File signal 2: autoint2.e  
 Quant Time: Jul 25 21:29:55 2023  
 Quant Method : Z:\pestpcbsrv\HPCHEM1\ECD\_D\Method\PD071423CLP.M  
 Quant Title : GC Extractables  
 QLast Update : Fri Jul 14 14:58:34 2023  
 Response via : Initial Calibration  
 Integrator: ChemStation

Volume Inj. : 1 µl  
 Signal #1 Phase : ZB-MR1 Signal #2 Phase: ZB-MR2  
 Signal #1 Info : 30M x 0.32mm x0.5 Signal #2 Info : 30M x 0.32mm x 0.25µm

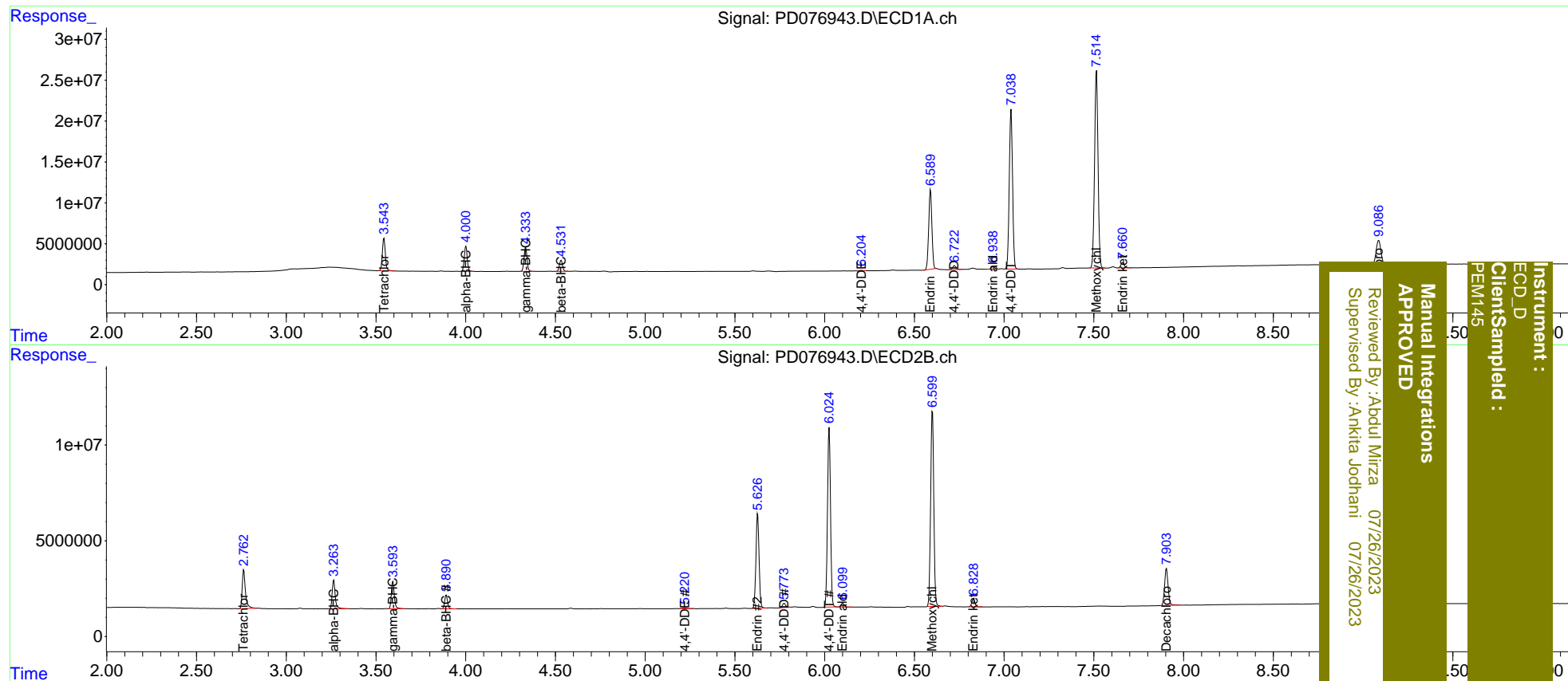
	Compound	RT#1	RT#2	Resp#1	Resp#2	ng/ml	ng/ml
-----							
System Monitoring Compounds							
1)	SA Tetrachlo...	3.545	2.764	46072532	25070213	21.657	23.487
27)	SA Decachlor...	9.088	7.905	53179714	26373315	21.889	24.602
Target Compounds							
2)	A alpha-BHC	4.001	3.265	36011173	17556896	10.160	11.095
3)	MA gamma-BHC...	4.335	3.595	34237909	16376088	10.322	10.931
6)	B beta-BHC	4.532	3.892	16442059	8140811	10.817	11.364
12)	B 4,4'-DDE	6.204	5.221	820249	529192	0.282m	0.438 #
14)	MA Endrin	6.590	5.627	120.9E6	59796615	46.894	48.356
16)	A 4,4'-DDD	6.724	5.774	6147978	2756895	2.721	2.909
17)	MA 4,4'-DDT	7.039	6.025	247.8E6	109.8E6	110.988	117.238
18)	B Endrin al...	6.940	6.101	4108427	2308707	2.197	2.752 #
20)	A Methoxychlor	7.515	6.601	324.0E6	125.0E6	244.794	234.285
21)	B Endrin ke...	7.661	6.830	8567408	5021597	3.094	3.924 #

(f)=RT Delta > 1/2 Window (#)=Amounts differ by > 25% (m)=manual int.

Data Path : Z:\pestpcbsrv\HPCHEM1\ECD\_D\Data\PD072523\  
 Data File : PD076943.D  
 Signal(s) : Signal #1: ECD1A.ch Signal #2: ECD2B.ch  
 Acq On : 25 Jul 2023 08:00  
 Operator : AR\AJ  
 Sample : PEM135  
 Misc :  
 ALS Vial : 3 Sample Multiplier: 1

Integration File signal 1: autoint1.e  
 Integration File signal 2: autoint2.e  
 Quant Time: Jul 25 21:29:55 2023  
 Quant Method : Z:\pestpcbsrv\HPCHEM1\ECD\_D\Method\PD071423CLP.M  
 Quant Title : GC Extractables  
 QLast Update : Fri Jul 14 14:58:34 2023  
 Response via : Initial Calibration  
 Integrator: ChemStation

Volume Inj. : 1 µl  
 Signal #1 Phase : ZB-MR1 Signal #2 Phase: ZB-MR2  
 Signal #1 Info : 30M x 0.32mm x0.5 Signal #2 Info : 30M x 0.32mm x 0.25µm



Instrument : ECD\_D  
 Client/Sampled : PEM145  
 Manual Integrations APPROVED  
 Reviewed By : Aboul Mirza 07/26/2023  
 Supervised By : Ankita Jodhani 07/26/2023