

Data Path : Z:\pestpcbsrv\HPCHEM1\ECD\_D\Data\PD072618\  
 Data File : PD048522.D  
 Signal(s) : Signal #1: ECD1A.CH Signal #2: ECD2B.CH  
 Acq On : 25 Jul 2018 21:40  
 Operator : AJ\SJ  
 Sample : PTOXICV500  
 Misc :  
 ALS Vial : 22 Sample Multiplier: 1

Instrument :  
 ECD\_D  
 ClientSampleId :  
 ICVPD072618TOX

Integration File signal 1: autoint1.e  
 Integration File signal 2: autoint2.e  
 Quant Time: Jul 30 14:48:39 2018  
 Quant Method : Z:\pestpcbsrv\HPCHEM1\ECD\_D\Method\DTX072618.M  
 Quant Title : GC Extractables  
 QLast Update : Mon Jul 30 14:48:14 2018  
 Response via : Initial Calibration  
 Integrator: ChemStation 6890 Scale Mode: Large solvent peaks clipped

Volume Inj. : 1 µl  
 Signal #1 Phase : ZB-MR2 Signal #2 Phase: ZB-MR1  
 Signal #1 Info : 30M x 0.32mm x0.2 Signal #2 Info : 30M x 0.32mm x 0.50µm

Compound	RT#1	RT#2	Resp#1	Resp#2	ng/ml	ng/ml
-----						
System Monitoring Compounds						
1) SA Tetrachlo...	3.361	3.967	62949535	678.6E6	48.407	50.162
7) SA Decachlor...	8.043	8.987	70480282	842.5E6	48.351	47.572
Target Compounds						
2) Toxaphene-1	5.568	7.024	4833181	73581967	484.659	492.148
3) Toxaphene-2	5.724	7.101	5423753	200.0E6	498.794	515.212
4) Toxaphene-3	6.757	7.186	11458836	116.8E6	484.770	505.086
5) Toxaphene-4	6.887	7.592	16105406	83203497	476.137	494.730
6) Toxaphene-5	7.193	7.943	2299696	36227535	460.772	542.936
-----						

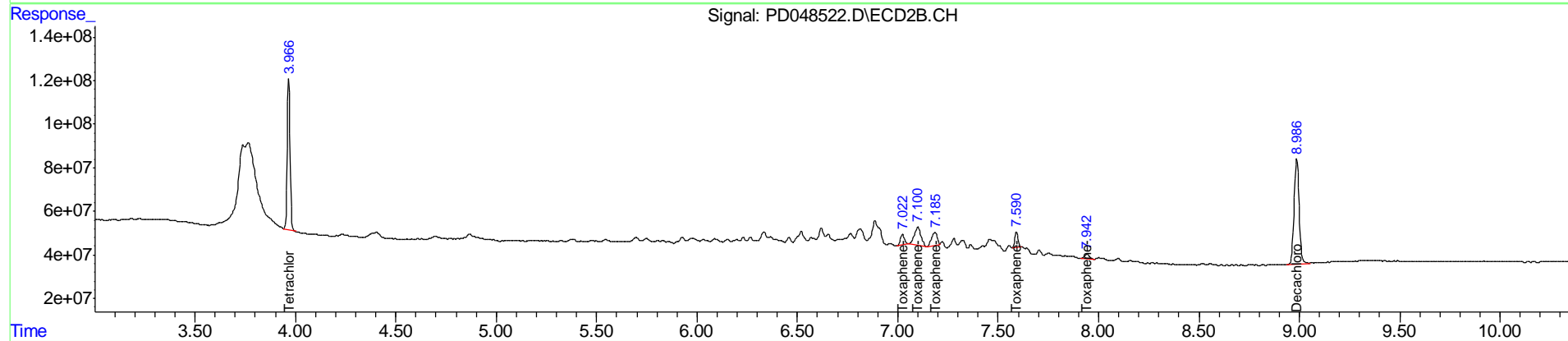
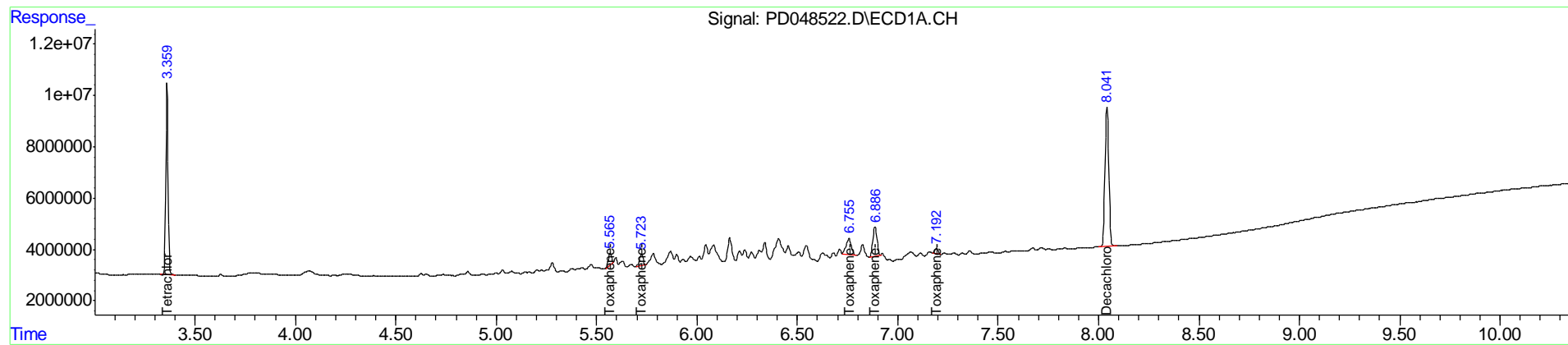
(f)=RT Delta > 1/2 Window (#)=Amounts differ by > 25% (m)=manual int.

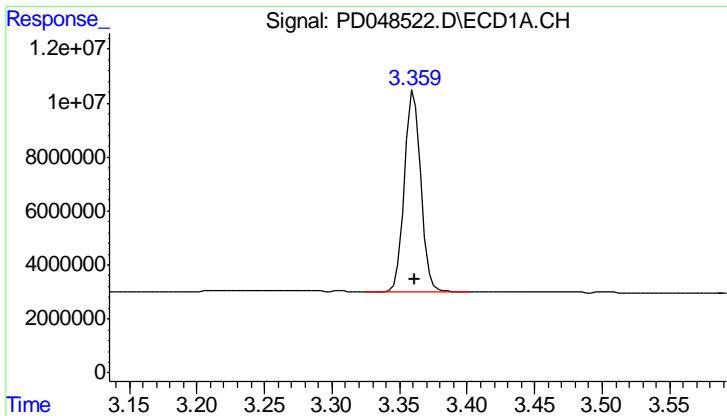
Data Path : Z:\pestpcbsrv\HPCHEM1\ECD\_D\Data\PD072618\  
 Data File : PD048522.D  
 Signal(s) : Signal #1: ECD1A.CH Signal #2: ECD2B.CH  
 Acq On : 25 Jul 2018 21:40  
 Operator : AJ\SJ  
 Sample : PTOXICV500  
 Misc :  
 ALS Vial : 22 Sample Multiplier: 1

Instrument :  
 ECD\_D  
 Client Sampled :  
 ICVPD072618TOX

Integration File signal 1: autoint1.e  
 Integration File signal 2: autoint2.e  
 Quant Time: Jul 30 14:48:39 2018  
 Quant Method : Z:\pestpcbsrv\HPCHEM1\ECD\_D\Method\DTX072618.M  
 Quant Title : GC Extractables  
 QLast Update : Mon Jul 30 14:48:14 2018  
 Response via : Initial Calibration  
 Integrator: ChemStation 6890 Scale Mode: Large solvent peaks clipped

Volume Inj. : 1 µl  
 Signal #1 Phase : ZB-MR2 Signal #2 Phase: ZB-MR1  
 Signal #1 Info : 30M x 0.32mm x0.2 Signal #2 Info : 30M x 0.32mm x 0.50µm

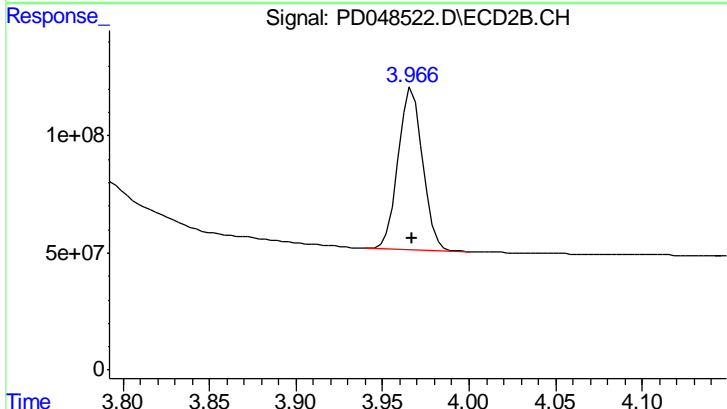




#1 Tetrachloro-m-xylene

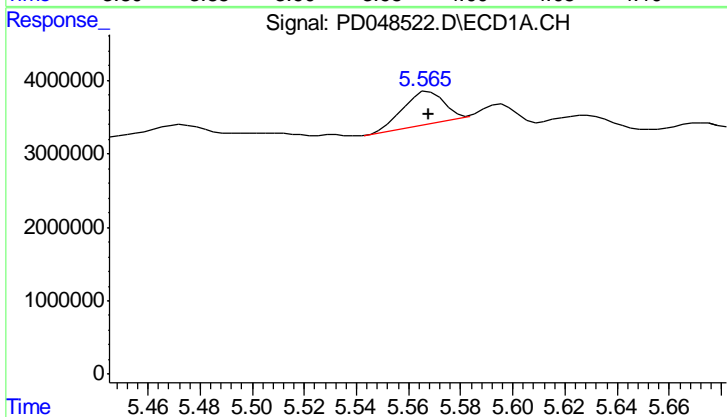
R.T.: 3.361 min  
 Delta R.T.: 0.000 min  
 Response: 62949535  
 Conc: 48.41 ng/ml

Instrument :  
 ECD\_D  
 ClientSampleId :  
 ICVPD072618TOX



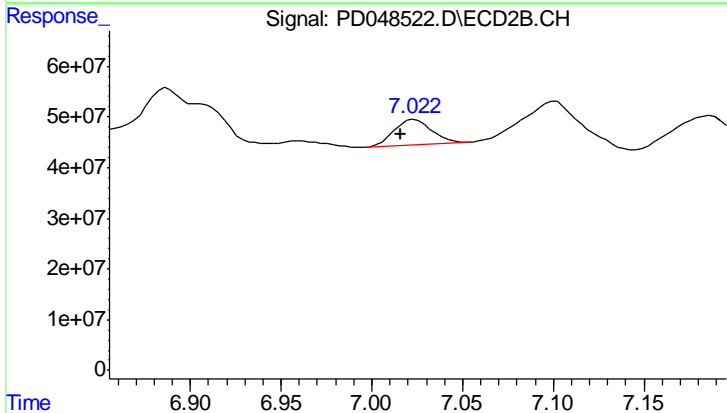
#1 Tetrachloro-m-xylene

R.T.: 3.967 min  
 Delta R.T.: 0.000 min  
 Response: 678561236  
 Conc: 50.16 ng/ml



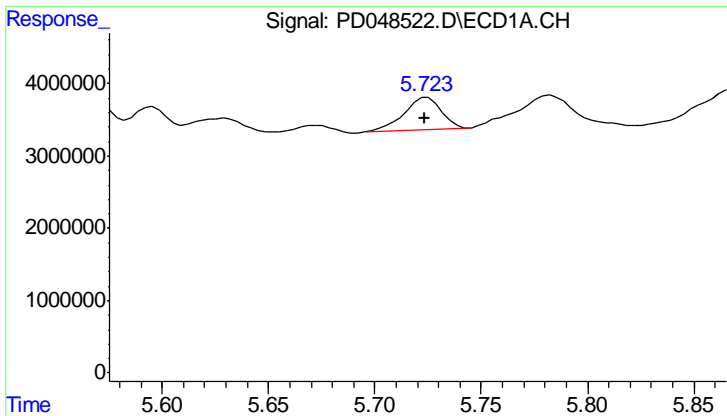
#2 Toxaphene-1

R.T.: 5.568 min  
 Delta R.T.: 0.000 min  
 Response: 4833181  
 Conc: 484.66 ng/ml



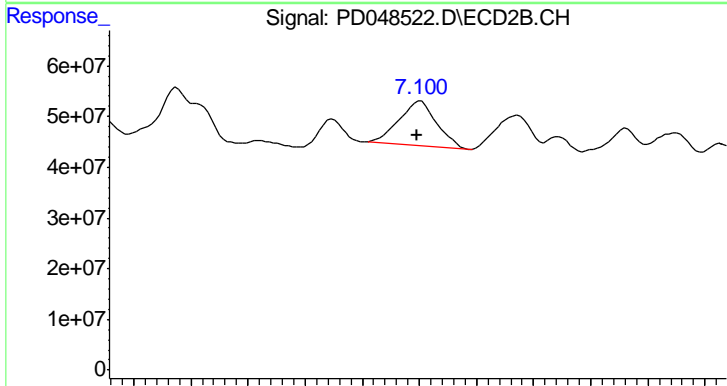
#2 Toxaphene-1

R.T.: 7.024 min  
 Delta R.T.: 0.008 min  
 Response: 73581967  
 Conc: 492.15 ng/ml

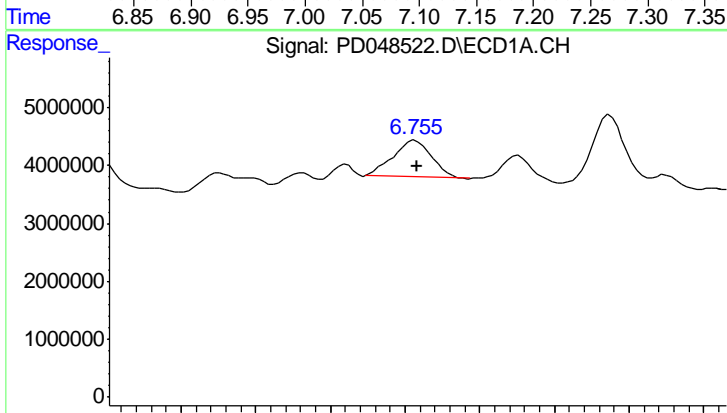


#3 Toxaphene-2  
 R.T.: 5.724 min  
 Delta R.T.: 0.001 min  
 Response: 5423753  
 Conc: 498.79 ng/ml

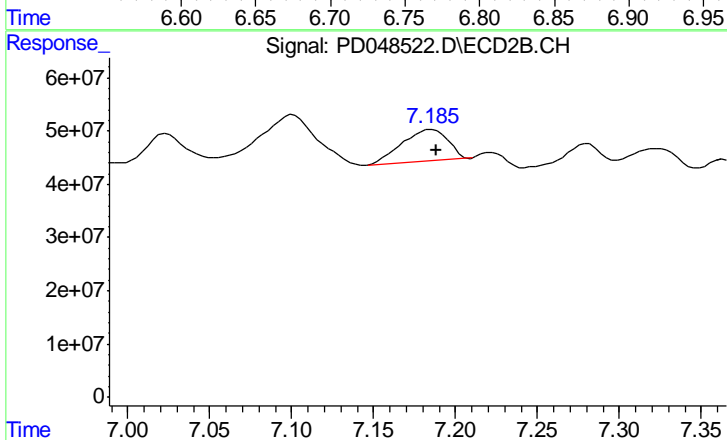
Instrument :  
 ECD\_D  
 ClientSampleId :  
 ICVPD072618TOX



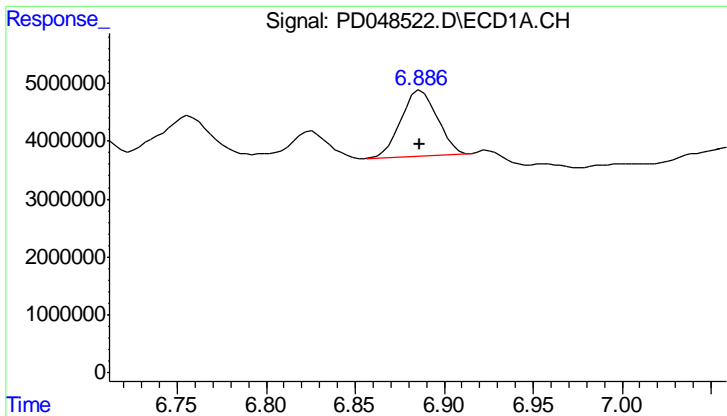
#3 Toxaphene-2  
 R.T.: 7.101 min  
 Delta R.T.: 0.003 min  
 Response: 199990938  
 Conc: 515.21 ng/ml



#4 Toxaphene-3  
 R.T.: 6.757 min  
 Delta R.T.: -0.001 min  
 Response: 11458836  
 Conc: 484.77 ng/ml

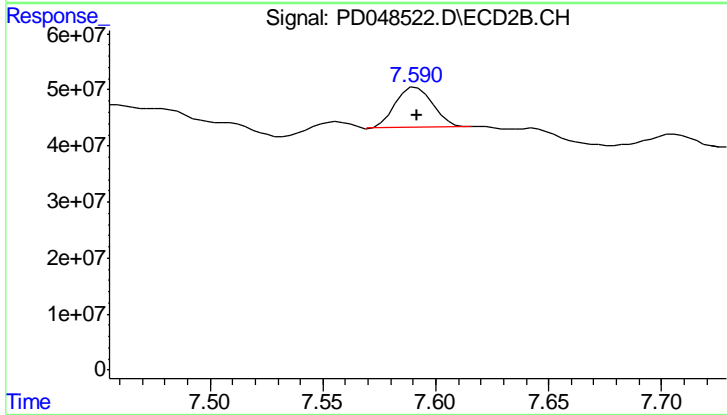


#4 Toxaphene-3  
 R.T.: 7.186 min  
 Delta R.T.: -0.003 min  
 Response: 116757639  
 Conc: 505.09 ng/ml

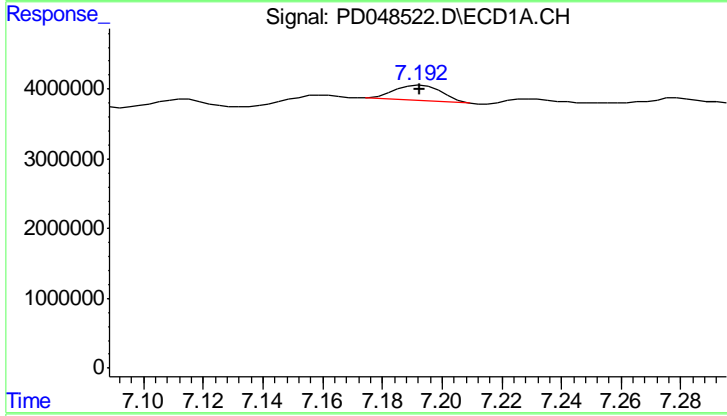


#5 Toxaphene-4  
 R.T.: 6.887 min  
 Delta R.T.: 0.000 min  
 Response: 16105406  
 Conc: 476.14 ng/ml

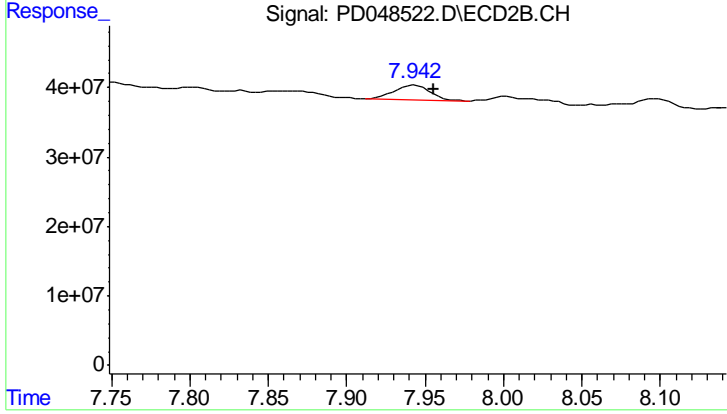
Instrument :  
 ECD\_D  
 ClientSampleId :  
 ICVPD072618TOX



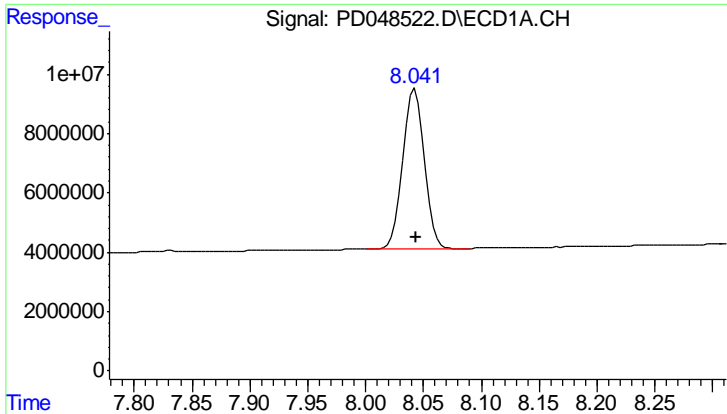
#5 Toxaphene-4  
 R.T.: 7.592 min  
 Delta R.T.: 0.000 min  
 Response: 83203497  
 Conc: 494.73 ng/ml



#6 Toxaphene-5  
 R.T.: 7.193 min  
 Delta R.T.: 0.000 min  
 Response: 2299696  
 Conc: 460.77 ng/ml



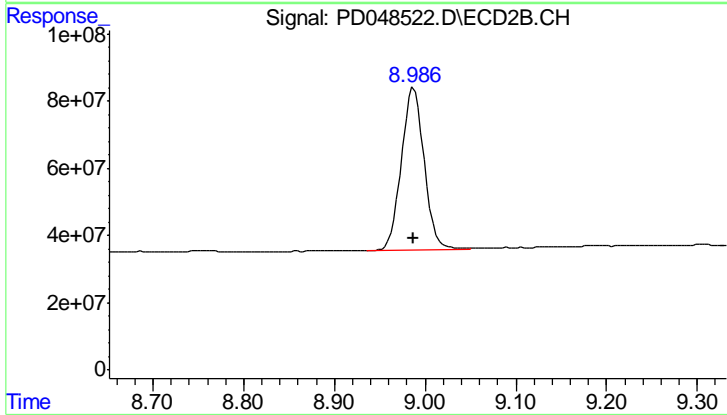
#6 Toxaphene-5  
 R.T.: 7.943 min  
 Delta R.T.: -0.012 min  
 Response: 36227535  
 Conc: 542.94 ng/ml



#7 Decachlorobiphenyl

R.T.: 8.043 min  
 Delta R.T.: 0.000 min  
 Response: 70480282  
 Conc: 48.35 ng/ml

Instrument :  
 ECD\_D  
 ClientSampled :  
 ICVPD072618TOX



#7 Decachlorobiphenyl

R.T.: 8.987 min  
 Delta R.T.: 0.000 min  
 Response: 842535584  
 Conc: 47.57 ng/ml