

Data Path : Z:\pestpcbsrv\HPCHEM1\ECD D\Data\PD072618\
 Data File : PD048539.D
 Signal(s) : Signal #1: ECD1A.CH Signal #2: ECD2B.CH
 Acq On : 26 Jul 2018 1:33
 Operator : AJ\SJ
 Sample : PB111429BL
 Misc :
 ALS Vial : 37 Sample Multiplier: 1

Instrument :
 ECD_D
 ClientSampleId :
 PB111429BL

Integration File signal 1: autoint1.e
 Integration File signal 2: autoint2.e
 Quant Time: Jul 26 05:35:54 2018
 Quant Method : Z:\pestpcbsrv\HPCHEM1\ECD_D\Method\DTX072618.M
 Quant Title : GC Extractables
 QLast Update : Thu Jul 26 04:24:23 2018
 Response via : Initial Calibration
 Integrator: ChemStation 6890 Scale Mode: Large solvent peaks clipped

Volume Inj. : 1 µl
 Signal #1 Phase : ZB-MR2 Signal #2 Phase: ZB-MR1
 Signal #1 Info : 30M x 0.32mm x0.2 Signal #2 Info : 30M x 0.32mm x 0.50µm

Compound	RT#1	RT#2	Resp#1	Resp#2	ng/ml	ng/ml

System Monitoring Compounds						
1) SA Tetrachlo...	3.361	3.967	22938887	241.1E6	17.534	17.804
7) SA Decachlor...	8.044	8.989	24955751	331.0E6	17.151	18.745

Target Compounds

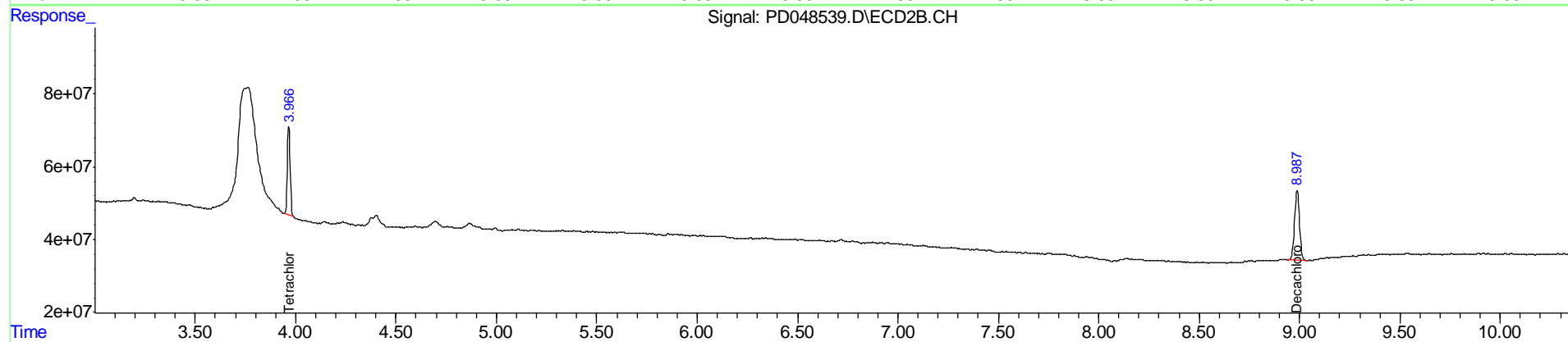
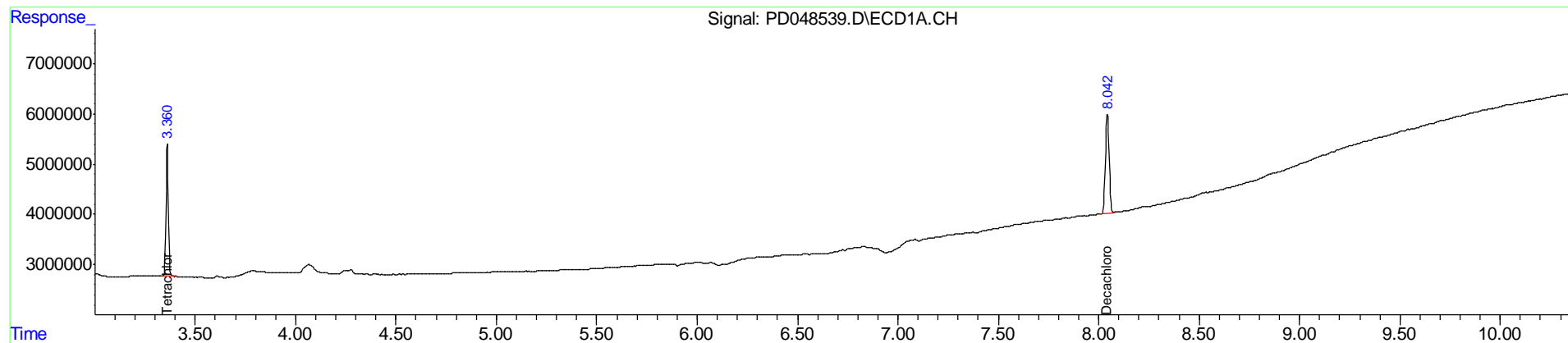
(f)=RT Delta > 1/2 Window (#)=Amounts differ by > 25% (m)=manual int.

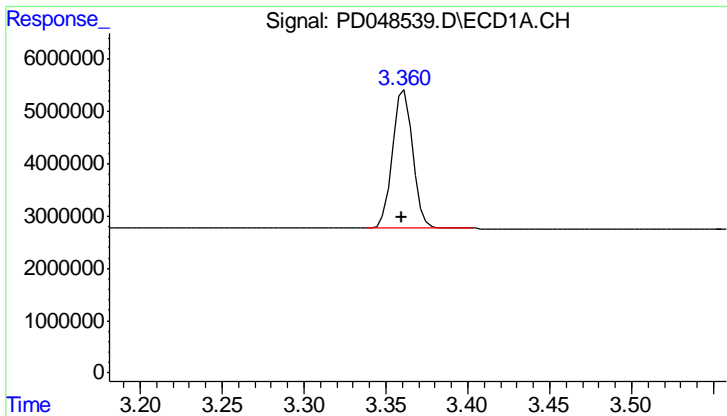
Data Path : Z:\pestpcbsrv\HPCHEM1\ECD D\Data\PD072618\
 Data File : PD048539.D
 Signal(s) : Signal #1: ECD1A.CH Signal #2: ECD2B.CH
 Acq On : 26 Jul 2018 1:33
 Operator : AJ\SJ
 Sample : PB111429BL
 Misc :
 ALS Vial : 37 Sample Multiplier: 1

Instrument :
 ECD_D
ClientSampled :
 PB111429BL

Integration File signal 1: autoint1.e
 Integration File signal 2: autoint2.e
 Quant Time: Jul 26 05:35:54 2018
 Quant Method : Z:\pestpcbsrv\HPCHEM1\ECD_D\Method\DTX072618.M
 Quant Title : GC Extractables
 QLast Update : Thu Jul 26 04:24:23 2018
 Response via : Initial Calibration
 Integrator: ChemStation 6890 Scale Mode: Large solvent peaks clipped

Volume Inj. : 1 ul
 Signal #1 Phase : ZB-MR2 Signal #2 Phase: ZB-MR1
 Signal #1 Info : 30M x 0.32mm x0.2 Signal #2 Info : 30M x 0.32mm x 0.50µm

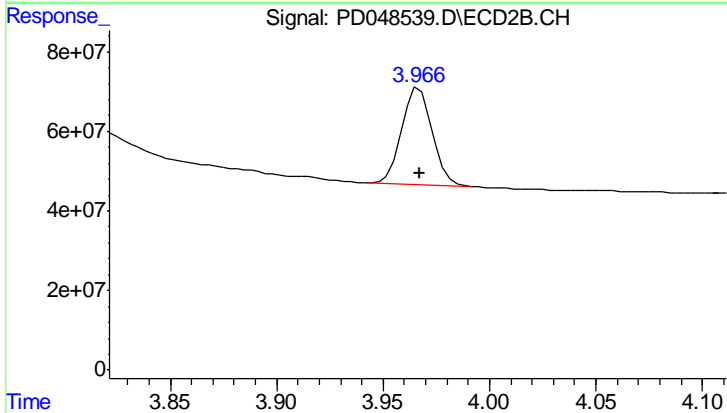




#1 Tetrachloro-m-xylene

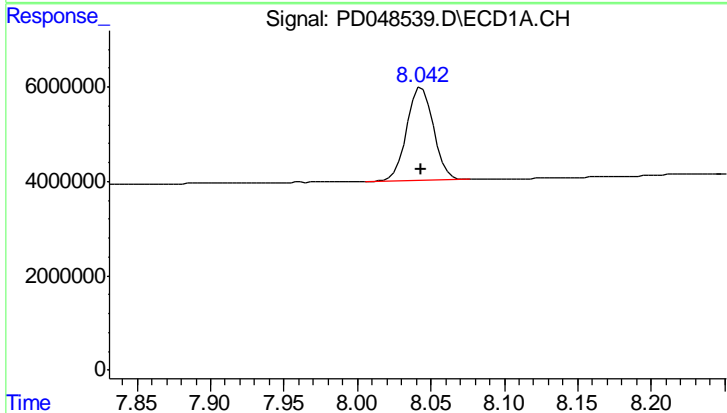
R.T.: 3.361 min
 Delta R.T.: 0.002 min
 Response: 22938887
 Conc: 17.53 ng/ml

Instrument :
 ECD_D
 ClientSampleId :
 PB111429BL



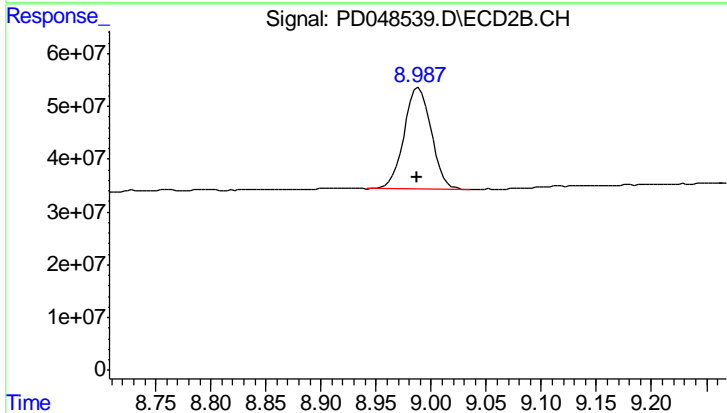
#1 Tetrachloro-m-xylene

R.T.: 3.967 min
 Delta R.T.: 0.000 min
 Response: 241065448
 Conc: 17.80 ng/ml



#7 Decachlorobiphenyl

R.T.: 8.044 min
 Delta R.T.: 0.000 min
 Response: 24955751
 Conc: 17.15 ng/ml



#7 Decachlorobiphenyl

R.T.: 8.989 min
 Delta R.T.: 0.000 min
 Response: 330956825
 Conc: 18.75 ng/ml