

Data Path : Z:\pestpcbsrv\HPCHEM1\ECD\_D\Data\PD072720\  
 Data File : PD058715.D  
 Signal(s) : Signal #1: ECD1A.ch Signal #2: ECD2B.ch  
 Acq On : 27 Jul 2020 13:52  
 Operator : AJ\MA  
 Sample : INDA311  
 Misc :  
 ALS Vial : 10 Sample Multiplier: 1

Instrument :  
 ECD\_D  
 ClientSampleId :

Integration File signal 1: autoint1.e  
 Integration File signal 2: autoint2.e  
 Quant Time: Jul 28 00:58:29 2020  
 Quant Method : Z:\pestpcbsrv\HPCHEM1\ECD\_D\Method\PD070220CLP.M  
 Quant Title : GC Extractables  
 QLast Update : Thu Jul 02 16:12:43 2020  
 Response via : Initial Calibration  
 Integrator: ChemStation

Volume Inj. : 1 µl  
 Signal #1 Phase : ZB-MR2 Signal #2 Phase: ZB-MR1  
 Signal #1 Info : 30M x 0.32mm x0.2 Signal #2 Info : 30M x 0.32mm x 0.50µm

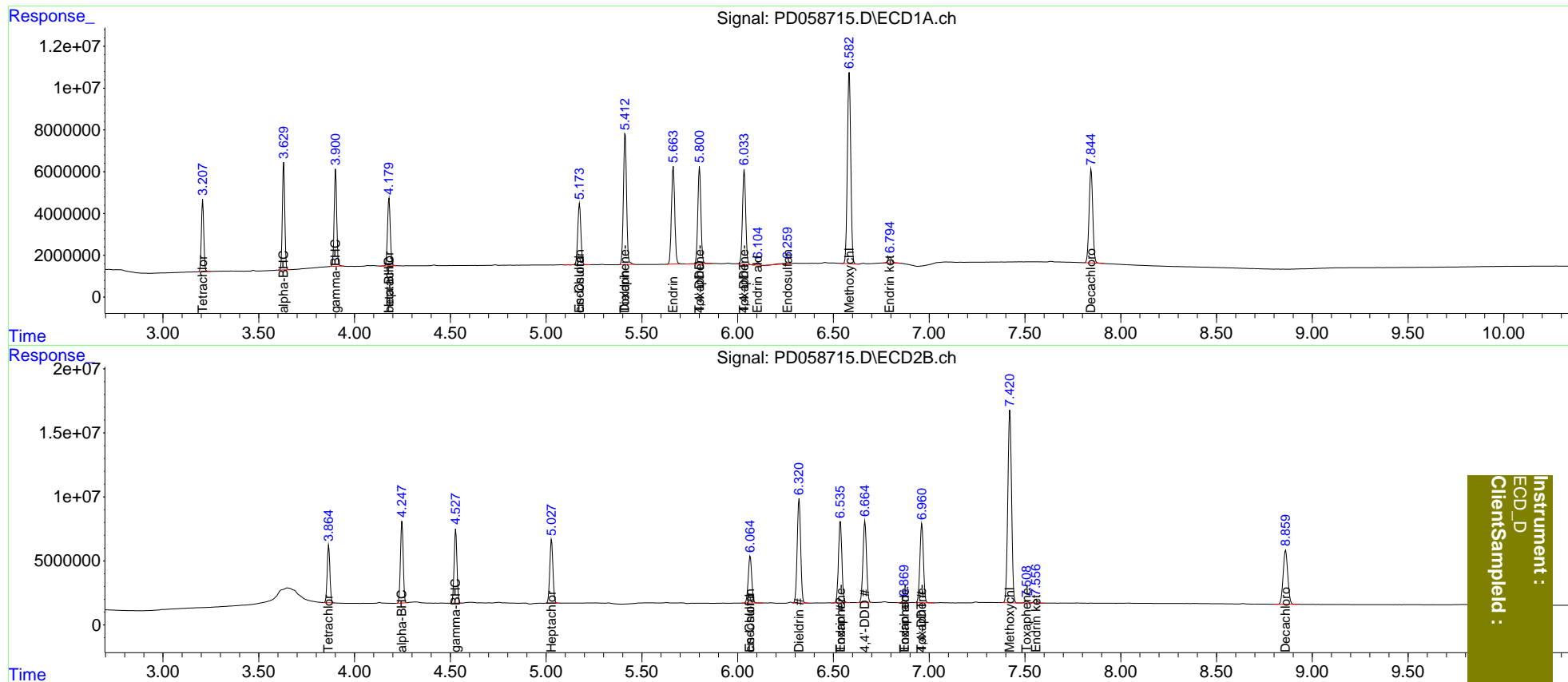
Compound	RT#1	RT#2	Resp#1	Resp#2	ng/ml	ng/ml
-----						
System Monitoring Compounds						
1) SA Tetrachlo...	3.208	3.866	29713963	43764556	17.678	19.206
2) SA Decachlor...	7.846	8.861	59676444	70529262	33.755	33.196
Target Compounds						
2) A alpha-BHC	3.631	4.248	44857901	63187004	18.027	18.669
3) MA gamma-BHC...	3.902	4.528	42077968	58833373	18.045	18.982
4) MA Heptachlor	4.181	5.029	32686713	56203432	20.648	19.335
6) B beta-BHC	4.181f	0.000	32686713	0	34.489	N.D. #
9) A Endosulfan I	5.175	6.066	33029438	46423034	18.368	19.013
11) B cis-Chlor...	5.175f	6.066f	33029438	46423034	16.670	17.698
13) MA Dieldrin	5.413	6.321	71535049	102.5E6	41.481	37.630
14) MA Endrin	5.664	6.536	55835852	79642085	37.798	34.868
16) A 4,4'-DDD	5.802	6.665	52145636	81060691	43.148	37.299
17) MA 4,4'-DDT	6.035	6.962	52615217	78410675	37.072	34.779
18) B Endrin al...	6.106	6.870	1438695	2129870	1.178	1.118
19) B Endosulfa...	6.261f	0.000	1518321	0	1.000	N.D. #
20) A Methoxychlor	6.583	7.422	113.4E6	203.4E6	207.883	173.855
21) B Endrin ke...	6.795	7.558	4137621	3668204	2.567	1.531 #
22) Toxaphene-1	5.413	0.000	71535049	0	7937.151	N.D. #
23) Toxaphene-2	0.000	6.536	0	79642085	N.D.	4808.488
24) Toxaphene-3	5.802	6.870	52145636	2129870	7026.170	103.061 #
25) Toxaphene-4	6.035	6.962	52615217	78410675	1982.848	1310.609 #
26) Toxaphene-5	0.000	7.509	0	1825290	N.D.	65.685

(f)=RT Delta > 1/2 Window (#)=Amounts differ by > 25% (m)=manual int.

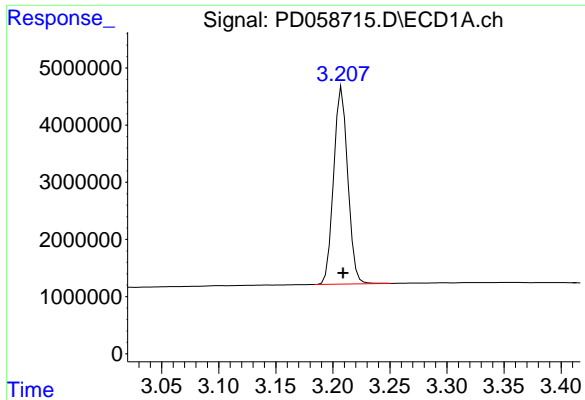
Data Path : Z:\pestpcbsrv\HPCHEM1\ECD\_D\Data\PD072720\  
 Data File : PD058715.D  
 Signal(s) : Signal #1: ECD1A.ch Signal #2: ECD2B.ch  
 Acq On : 27 Jul 2020 13:52  
 Operator : AJ\MA  
 Sample : INDA311  
 Misc :  
 ALS Vial : 10 Sample Multiplier: 1

Integration File signal 1: autoint1.e  
 Integration File signal 2: autoint2.e  
 Quant Time: Jul 28 00:58:29 2020  
 Quant Method : Z:\pestpcbsrv\HPCHEM1\ECD\_D\Method\PD070220CLP.M  
 Quant Title : GC Extractables  
 QLast Update : Thu Jul 02 16:12:43 2020  
 Response via : Initial Calibration  
 Integrator: ChemStation

Volume Inj. : 1 µl  
 Signal #1 Phase : ZB-MR2 Signal #2 Phase: ZB-MR1  
 Signal #1 Info : 30M x 0.32mm x0.2 Signal #2 Info : 30M x 0.32mm x 0.50µm

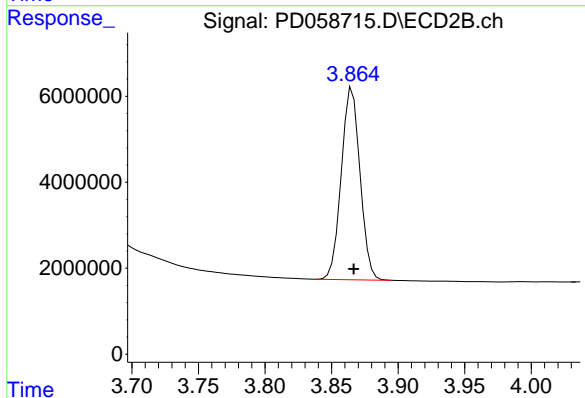


Instrument :  
 ECD\_D  
 ClientSampleId :

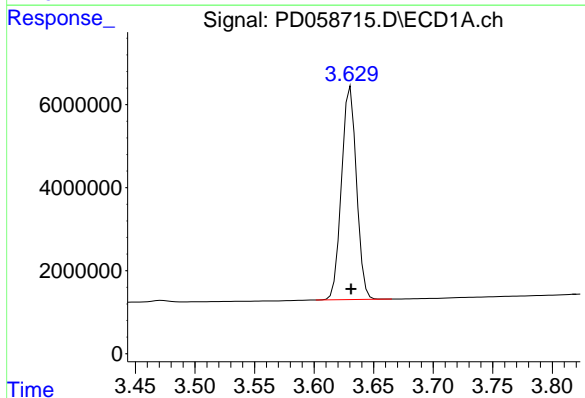


#1 Tetrachloro-m-xylene  
 R.T.: 3.208 min  
 Delta R.T.: 0.000 min  
 Response: 29713963  
 Conc: 17.68 ng/ml

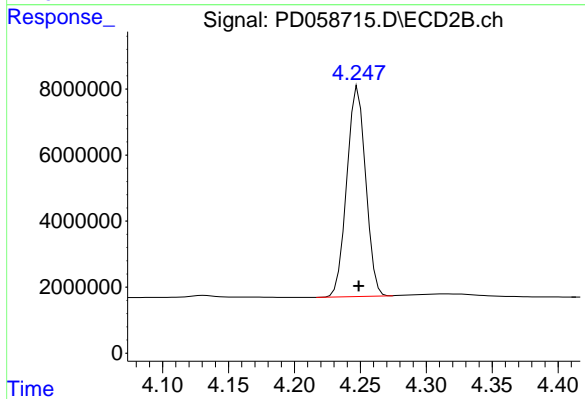
Instrument :  
 ECD\_D  
 ClientSampleId :



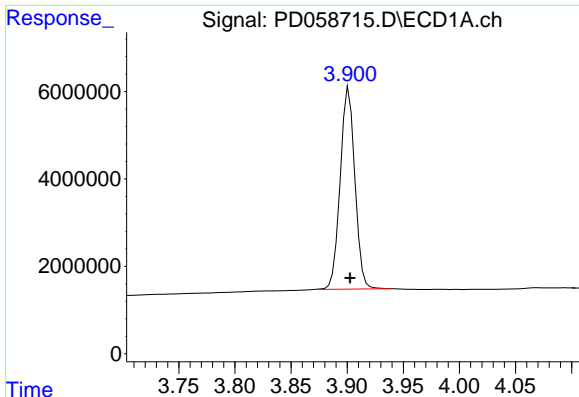
#1 Tetrachloro-m-xylene  
 R.T.: 3.866 min  
 Delta R.T.: 0.000 min  
 Response: 43764556  
 Conc: 19.21 ng/ml



#2 alpha-BHC  
 R.T.: 3.631 min  
 Delta R.T.: 0.000 min  
 Response: 44857901  
 Conc: 18.03 ng/ml



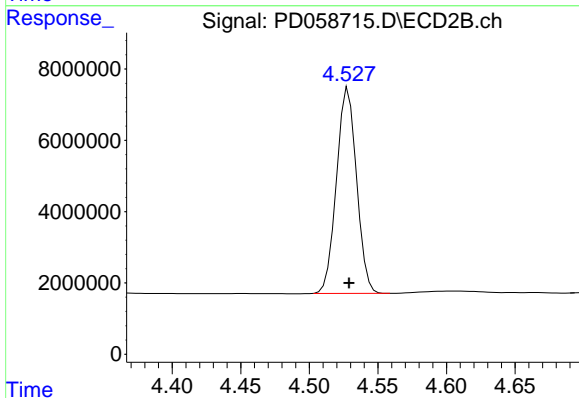
#2 alpha-BHC  
 R.T.: 4.248 min  
 Delta R.T.: 0.000 min  
 Response: 63187004  
 Conc: 18.67 ng/ml



#3 gamma-BHC (Lindane)

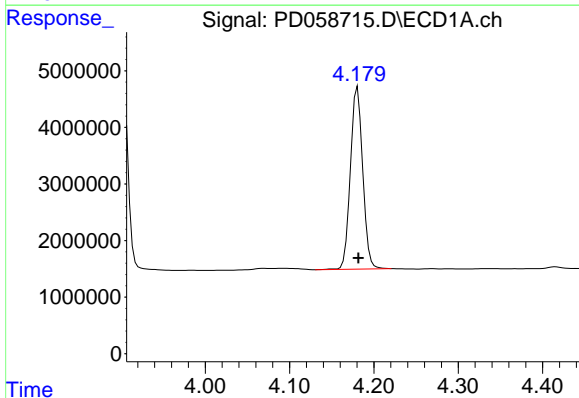
R.T.: 3.902 min  
Delta R.T.: 0.000 min  
Response: 42077968  
Conc: 18.04 ng/ml

Instrument :  
ECD\_D  
ClientSampleId :



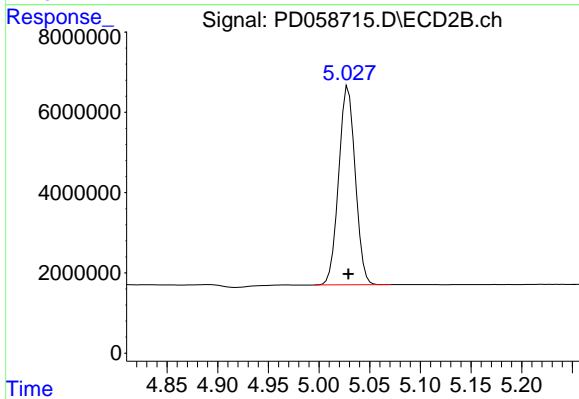
#3 gamma-BHC (Lindane)

R.T.: 4.528 min  
Delta R.T.: 0.000 min  
Response: 58833373  
Conc: 18.98 ng/ml



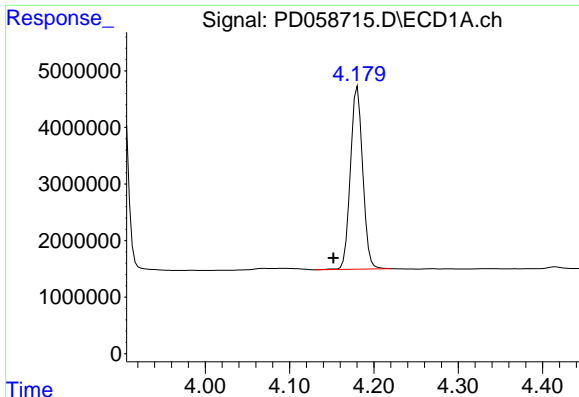
#4 Heptachlor

R.T.: 4.181 min  
Delta R.T.: -0.001 min  
Response: 32686713  
Conc: 20.65 ng/ml



#4 Heptachlor

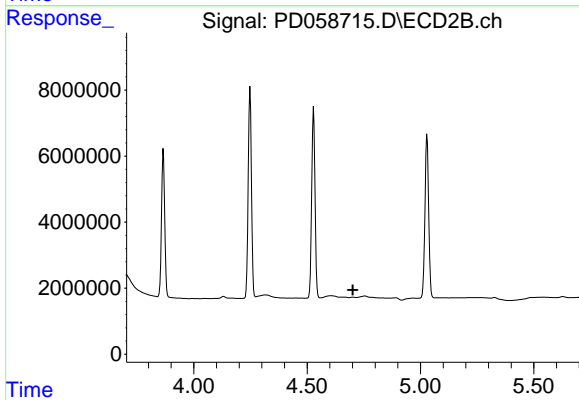
R.T.: 5.029 min  
Delta R.T.: 0.000 min  
Response: 56203432  
Conc: 19.33 ng/ml



#6 beta-BHC

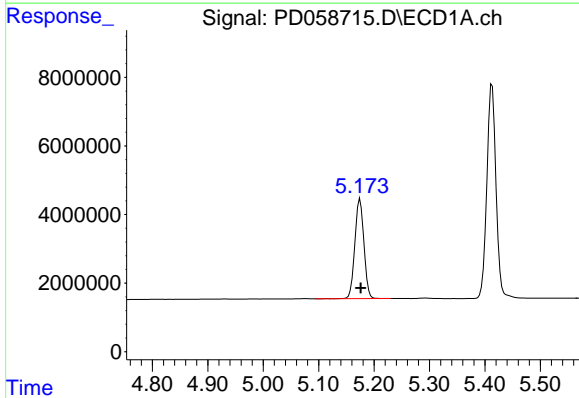
R.T.: 4.181 min  
 Delta R.T.: 0.029 min  
 Response: 32686713  
 Conc: 34.49 ng/ml

Instrument :  
 ECD\_D  
 ClientSampled :



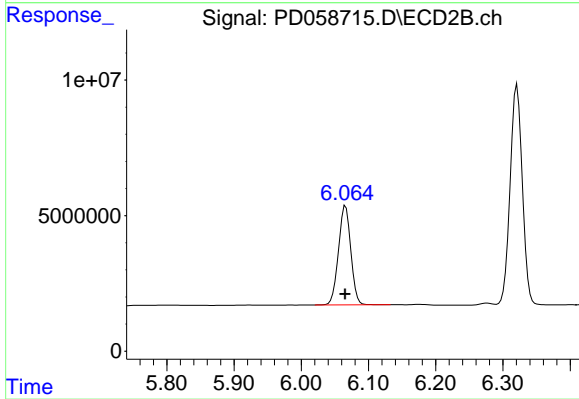
#6 beta-BHC

R.T.: 0.000 min  
 Exp R.T. : 4.701 min  
 Response: 0  
 Conc: N.D.



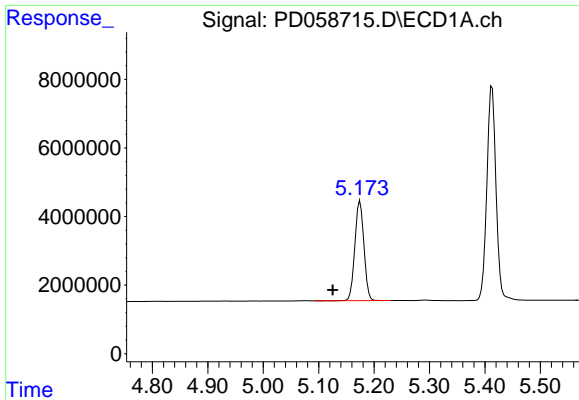
#9 Endosulfan I

R.T.: 5.175 min  
 Delta R.T.: -0.001 min  
 Response: 33029438  
 Conc: 18.37 ng/ml



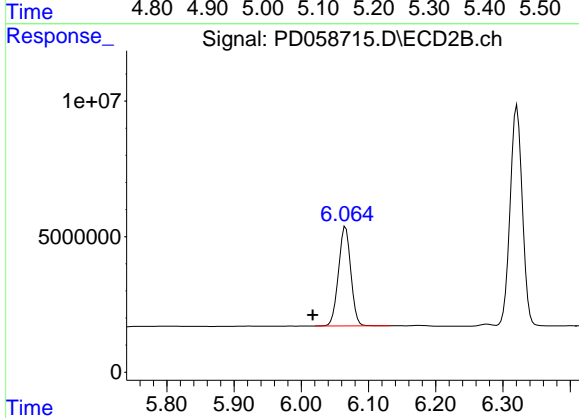
#9 Endosulfan I

R.T.: 6.066 min  
 Delta R.T.: 0.000 min  
 Response: 46423034  
 Conc: 19.01 ng/ml

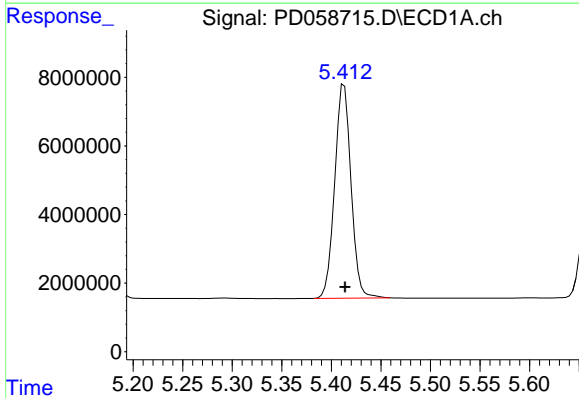


#11 cis-Chlordane  
R.T.: 5.175 min  
Delta R.T.: 0.049 min  
Response: 33029438  
Conc: 16.67 ng/ml

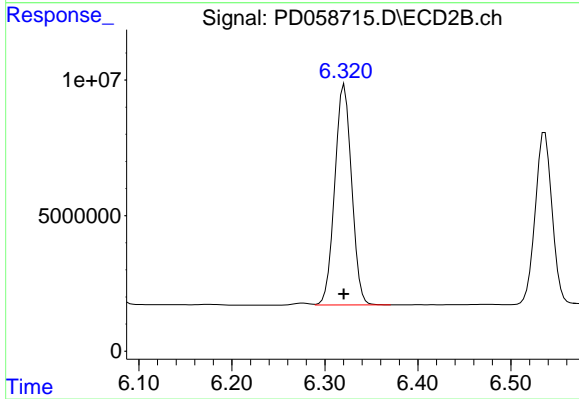
Instrument :  
ECD\_D  
ClientSampled :



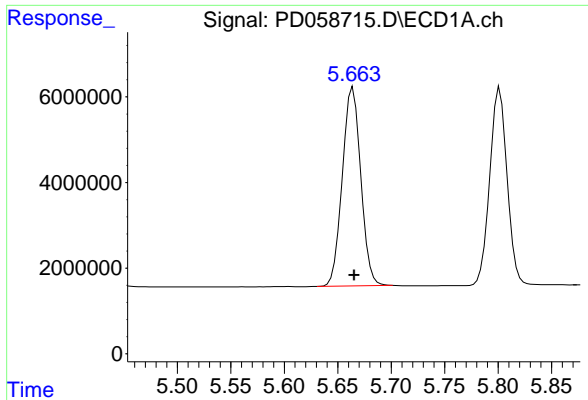
#11 cis-Chlordane  
R.T.: 6.066 min  
Delta R.T.: 0.049 min  
Response: 46423034  
Conc: 17.70 ng/ml



#13 Dieldrin  
R.T.: 5.413 min  
Delta R.T.: 0.000 min  
Response: 71535049  
Conc: 41.48 ng/ml

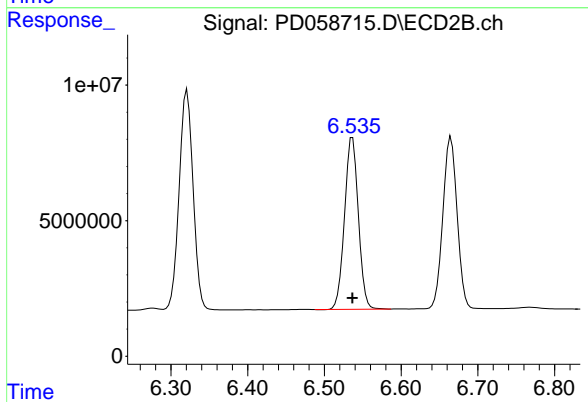


#13 Dieldrin  
R.T.: 6.321 min  
Delta R.T.: 0.000 min  
Response: 102459257  
Conc: 37.63 ng/ml

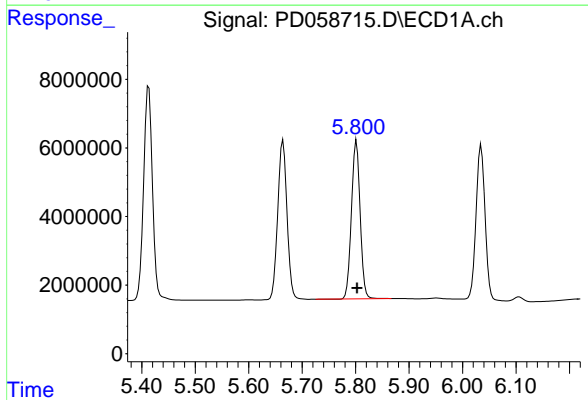


#14 Endrin  
R.T.: 5.664 min  
Delta R.T.: 0.000 min  
Response: 55835852  
Conc: 37.80 ng/ml

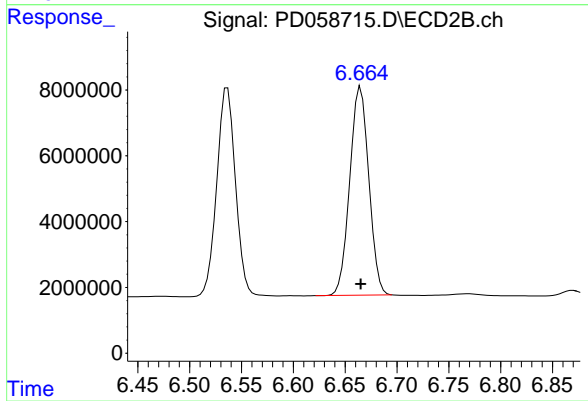
Instrument :  
ECD\_D  
ClientSampleId :



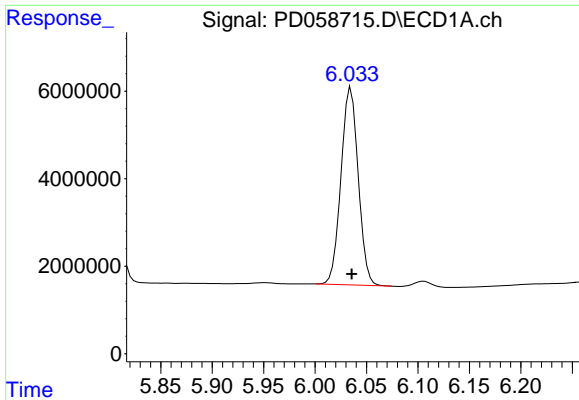
#14 Endrin  
R.T.: 6.536 min  
Delta R.T.: 0.000 min  
Response: 79642085  
Conc: 34.87 ng/ml



#16 4,4'-DDD  
R.T.: 5.802 min  
Delta R.T.: -0.001 min  
Response: 52145636  
Conc: 43.15 ng/ml



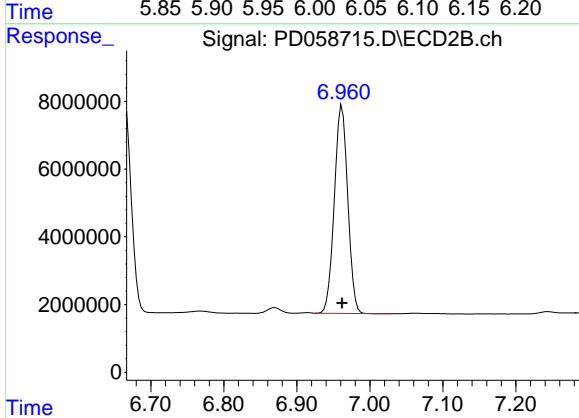
#16 4,4'-DDD  
R.T.: 6.665 min  
Delta R.T.: 0.000 min  
Response: 81060691  
Conc: 37.30 ng/ml



#17 4,4'-DDT

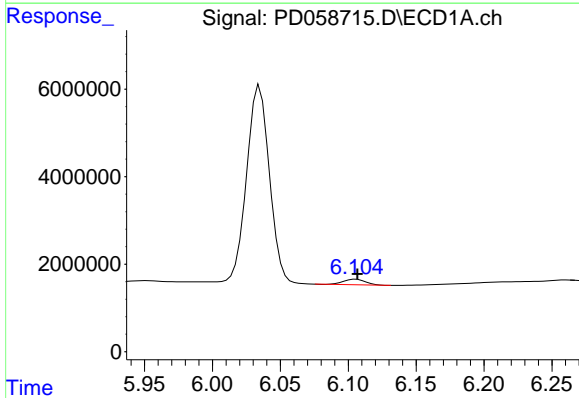
R.T.: 6.035 min  
 Delta R.T.: 0.000 min  
 Response: 52615217  
 Conc: 37.07 ng/ml

Instrument :  
 ECD\_D  
 ClientSampled :



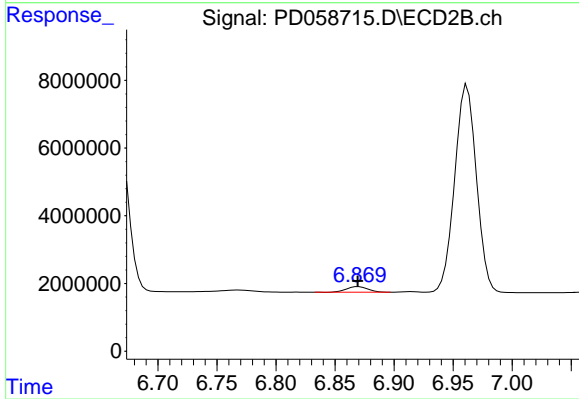
#17 4,4'-DDT

R.T.: 6.962 min  
 Delta R.T.: 0.000 min  
 Response: 78410675  
 Conc: 34.78 ng/ml



#18 Endrin aldehyde

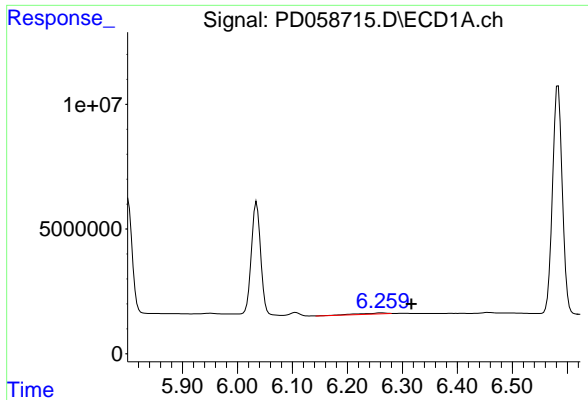
R.T.: 6.106 min  
 Delta R.T.: 0.000 min  
 Response: 1438695  
 Conc: 1.18 ng/ml



#18 Endrin aldehyde

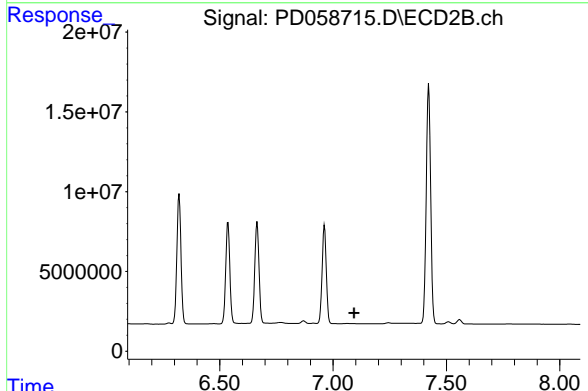
R.T.: 6.870 min  
 Delta R.T.: 0.000 min  
 Response: 2129870  
 Conc: 1.12 ng/ml



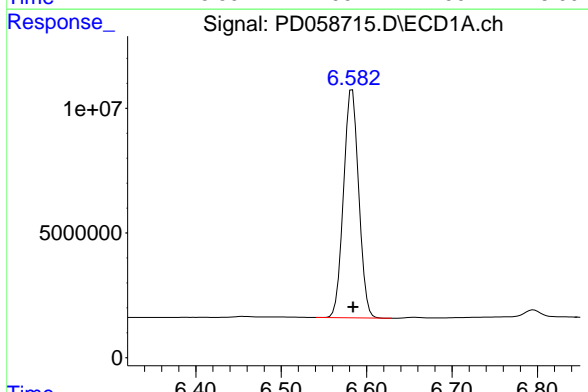


#19 Endosulfan Sulfate  
 R.T.: 6.261 min  
 Delta R.T.: -0.056 min  
 Response: 1518321  
 Conc: 1.00 ng/ml

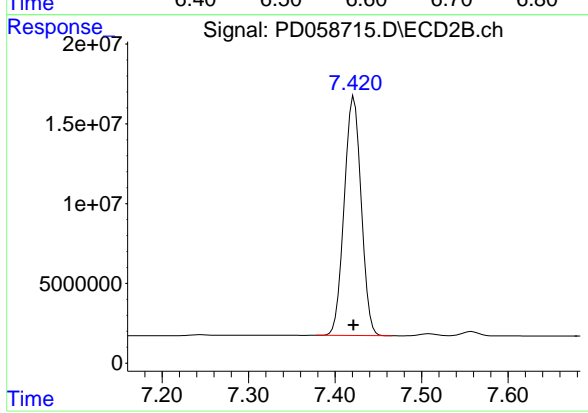
Instrument :  
 ECD\_D  
 ClientSampleId :



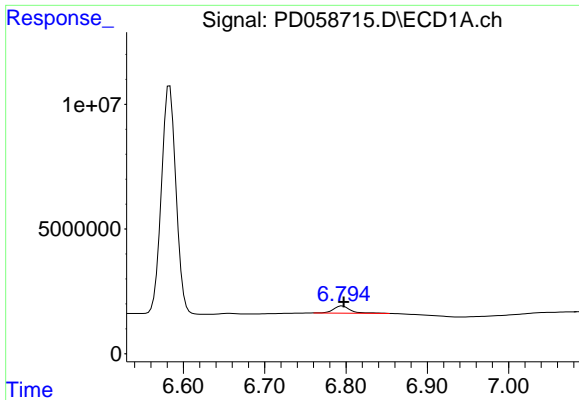
#19 Endosulfan Sulfate  
 R.T.: 0.000 min  
 Exp R.T. : 7.092 min  
 Response: 0  
 Conc: N.D.



#20 Methoxychlor  
 R.T.: 6.583 min  
 Delta R.T.: 0.000 min  
 Response: 113377967  
 Conc: 207.88 ng/ml



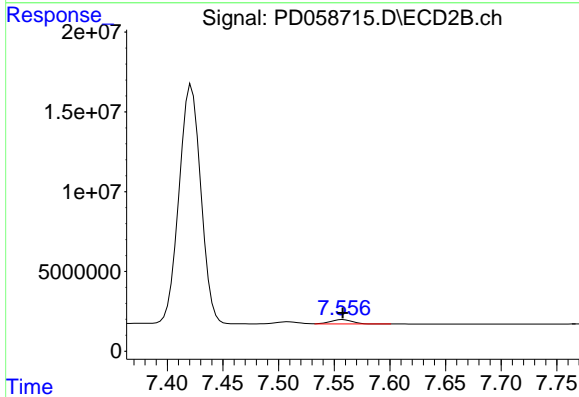
#20 Methoxychlor  
 R.T.: 7.422 min  
 Delta R.T.: 0.000 min  
 Response: 203381527  
 Conc: 173.85 ng/ml



#21 Endrin ketone

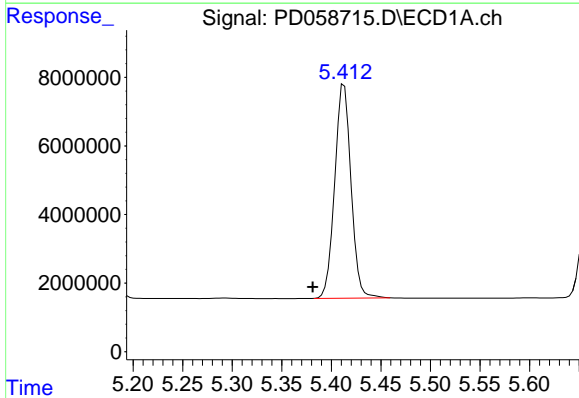
R.T.: 6.795 min  
 Delta R.T.: -0.002 min  
 Response: 4137621  
 Conc: 2.57 ng/ml

Instrument :  
 ECD\_D  
 ClientSampled :



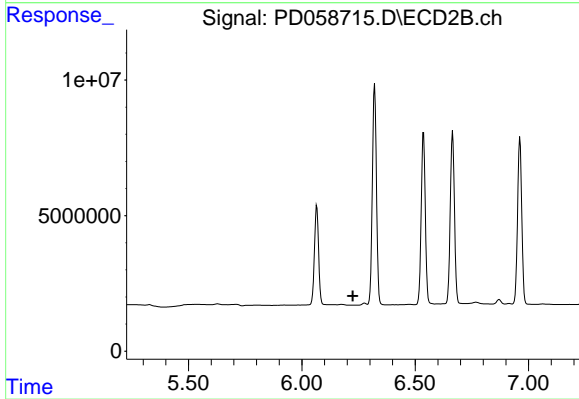
#21 Endrin ketone

R.T.: 7.558 min  
 Delta R.T.: 0.000 min  
 Response: 3668204  
 Conc: 1.53 ng/ml



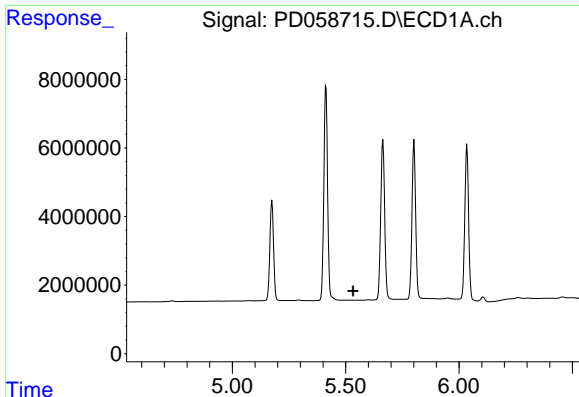
#22 Toxaphene-1

R.T.: 5.413 min  
 Delta R.T.: 0.032 min  
 Response: 71535049  
 Conc: 7937.15 ng/ml



#22 Toxaphene-1

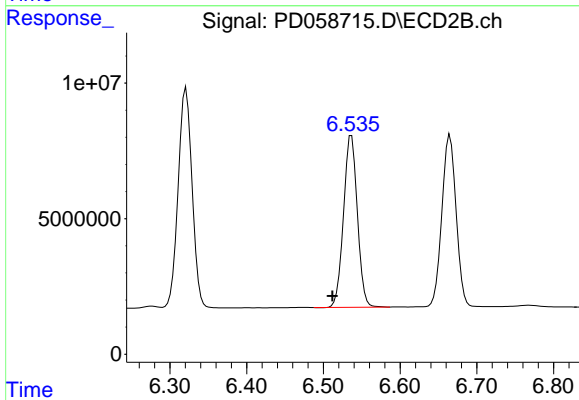
R.T.: 0.000 min  
 Exp R.T.: 6.224 min  
 Response: 0  
 Conc: N.D.



#23 Toxaphene-2

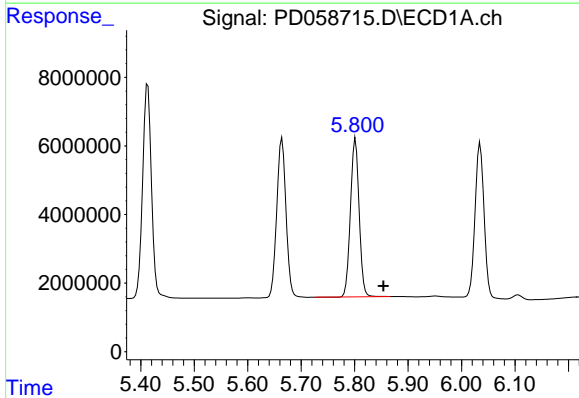
R.T.: 0.000 min  
 Exp R.T.: 5.533 min  
 Response: 0  
 Conc: N.D.

Instrument :  
 ECD\_D  
 ClientSampled :



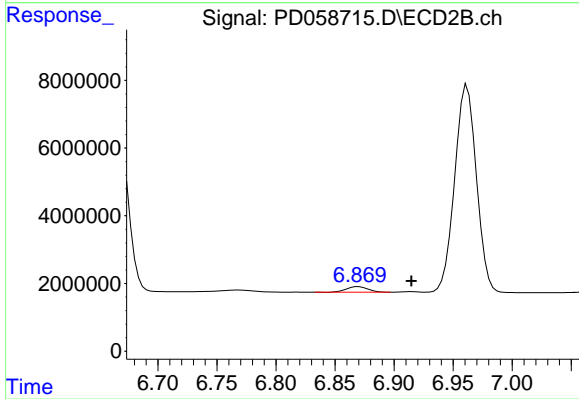
#23 Toxaphene-2

R.T.: 6.536 min  
 Delta R.T.: 0.025 min  
 Response: 79642085  
 Conc: 4808.49 ng/ml



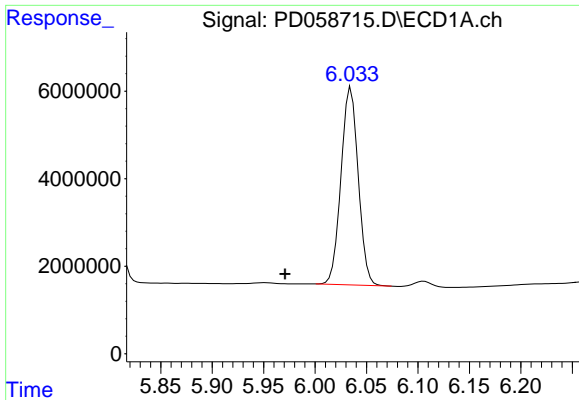
#24 Toxaphene-3

R.T.: 5.802 min  
 Delta R.T.: -0.052 min  
 Response: 52145636  
 Conc: 7026.17 ng/ml



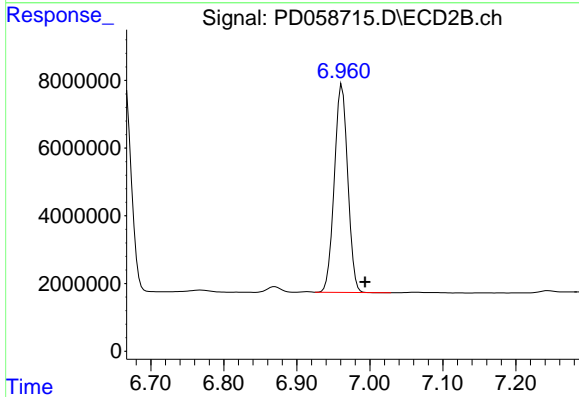
#24 Toxaphene-3

R.T.: 6.870 min  
 Delta R.T.: -0.045 min  
 Response: 2129870  
 Conc: 103.06 ng/ml

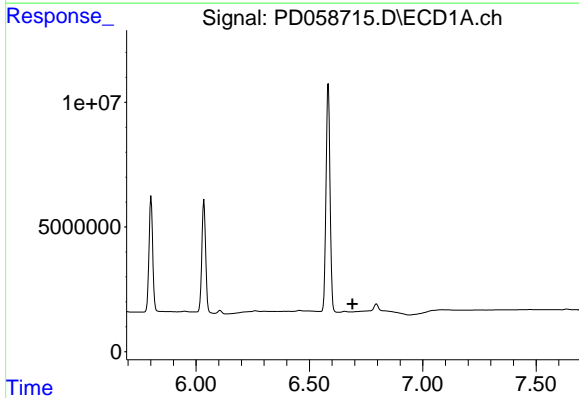


#25 Toxaphene-4  
 R.T.: 6.035 min  
 Delta R.T.: 0.064 min  
 Response: 52615217  
 Conc: 1982.85 ng/ml

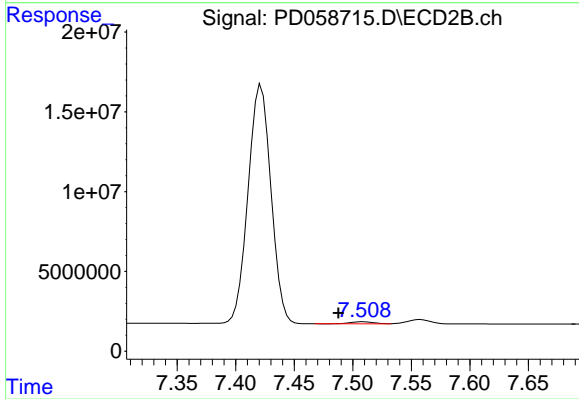
Instrument :  
 ECD\_D  
 ClientSampleId :



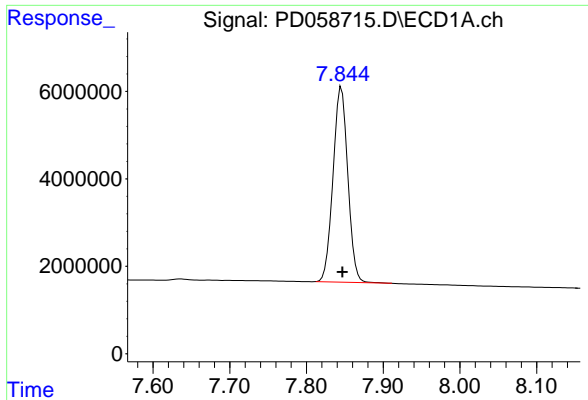
#25 Toxaphene-4  
 R.T.: 6.962 min  
 Delta R.T.: -0.032 min  
 Response: 78410675  
 Conc: 1310.61 ng/ml



#26 Toxaphene-5  
 R.T.: 0.000 min  
 Exp R.T. : 6.690 min  
 Response: 0  
 Conc: N.D.



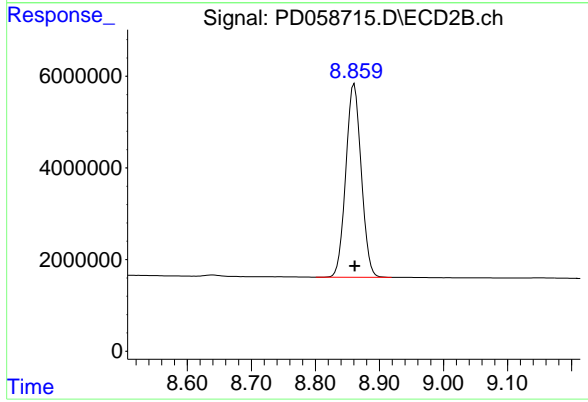
#26 Toxaphene-5  
 R.T.: 7.509 min  
 Delta R.T.: 0.021 min  
 Response: 1825290  
 Conc: 65.69 ng/ml



#27 Decachlorobiphenyl

R.T.: 7.846 min  
Delta R.T.: -0.001 min  
Response: 59676444  
Conc: 33.76 ng/ml

Instrument :  
ECD\_D  
ClientSampleId :



#27 Decachlorobiphenyl

R.T.: 8.861 min  
Delta R.T.: 0.000 min  
Response: 70529262  
Conc: 33.20 ng/ml