

Data Path : Z:\pestpcbsrv\HPCHEM1\ECD\_D\Data\PD072721\  
 Data File : PD064458.D  
 Signal(s) : Signal #1: ECD1A.ch Signal #2: ECD2B.ch  
 Acq On : 28 Jul 2021 08:47  
 Operator : AR\AJ  
 Sample : M3087-11  
 Misc :  
 ALS Vial : 20 Sample Multiplier: 1

Instrument :  
 ECD\_D  
 ClientSampleId :  
 PEST-GPC2-BLANK

Integration File signal 1: autoint1.e  
 Integration File signal 2: autoint2.e  
 Quant Time: Jul 28 09:30:17 2021  
 Quant Method : Z:\pestpcbsrv\HPCHEM1\ECD\_D\Method\PD072721CLP.M  
 Quant Title : GC Extractables  
 QLast Update : Wed Jul 28 07:07:14 2021  
 Response via : Initial Calibration  
 Integrator: ChemStation

Volume Inj. : 1 µl  
 Signal #1 Phase : ZB-MR2 Signal #2 Phase: ZB-MR1  
 Signal #1 Info : 30M x 0.32mm x 0.2 Signal #2 Info : 30M x 0.32mm x 0.50µm

Compound	RT#1	RT#2	Resp#1	Resp#2	ng/ml	ng/ml
----------	------	------	--------	--------	-------	-------

-----  
 System Monitoring Compounds

Target Compounds

2) A	alpha-BHC	0.000	5.323	0	177810	N.D.	<MDL
3) MA	gamma-BHC...	0.000	5.754	0	2793927	N.D.	0.245
4) MA	Heptachlor	0.000	6.121f	0	4879194	N.D.	0.430
6) B	beta-BHC	0.000	6.121	0	4879194	N.D.	0.804
7) B	delta-BHC	6.873f	6.394	4134403	2111747	2.376	0.194 #
9) A	Endosulfan I	0.000	7.514f	0	1372281	N.D.	0.178
10) B	trans-Chl...	0.000	7.377f	0	1517173	N.D.	0.167
11) B	cis-Chlor...	0.000	7.377	0	1517173	N.D.	0.171
13) MA	Dieldrin	0.000	7.727	0	2119532	N.D.	0.264
14) MA	Endrin	0.000	7.956f	0	141442	N.D.	<MDL
15) B	Endosulfa...	0.000	8.269f	0	14174245	N.D.	2.456
16) A	4,4'-DDD	8.922f	8.192	3455266	499136	2.815	<MDL #
17) MA	4,4'-DDT	0.000	8.461	0	397468	N.D.	<MDL
18) B	Endrin al...	0.000	8.562f	0	152945	N.D.	<MDL
19) B	Endosulfa...	9.488f	8.736	516852	864853	0.375	0.160 #
20) A	Methoxychlor	0.000	9.039	0	3263620	N.D.	1.275
22)	Toxaphene-1	0.000	7.727	0	2119532	N.D.	56.332
23)	Toxaphene-2	0.000	7.956	0	141442	N.D.	1.675
25)	Toxaphene-4	0.000	8.736	0	864853	N.D.	15.353
26)	Toxaphene-5	0.000	9.156	0	5271080	N.D.	41.929

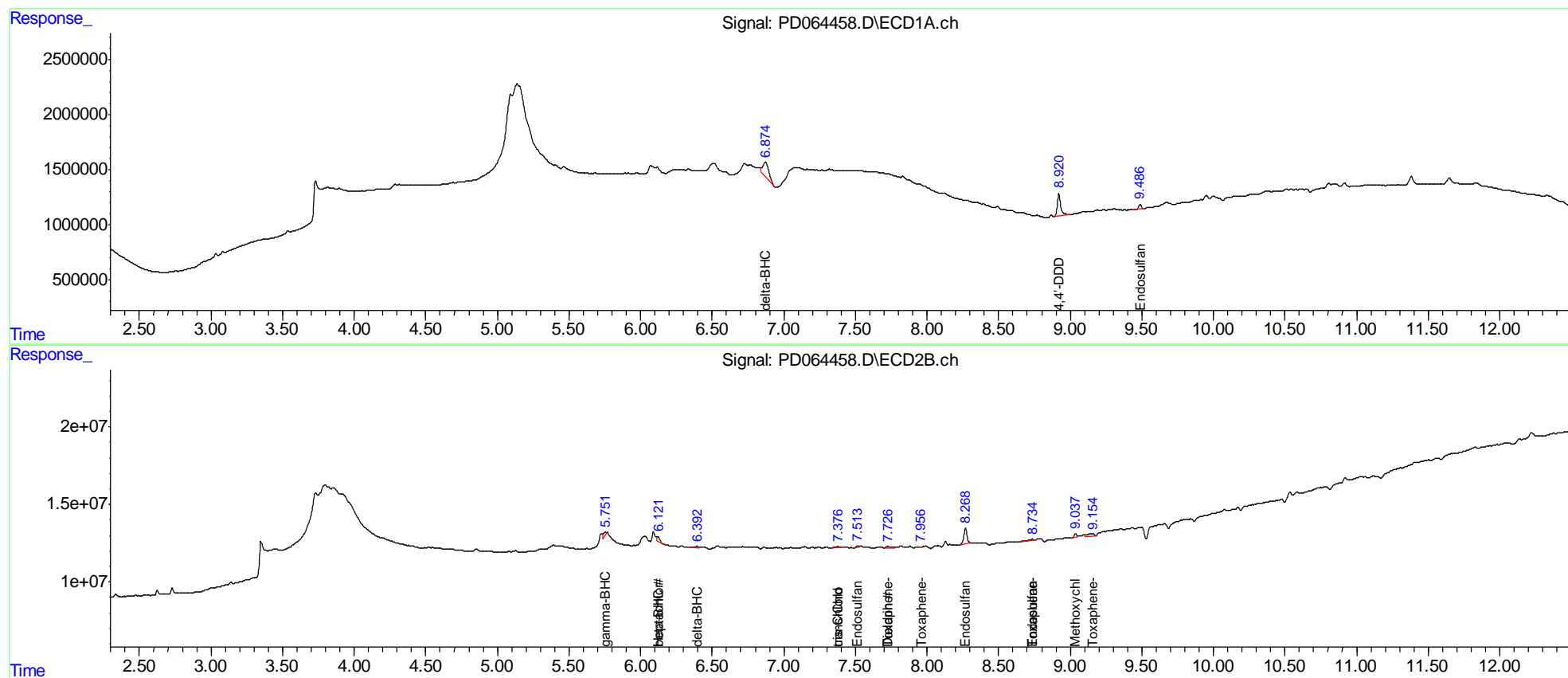
-----  
 (f)=RT Delta > 1/2 Window (#)=Amounts differ by > 25% (m)=manual int.

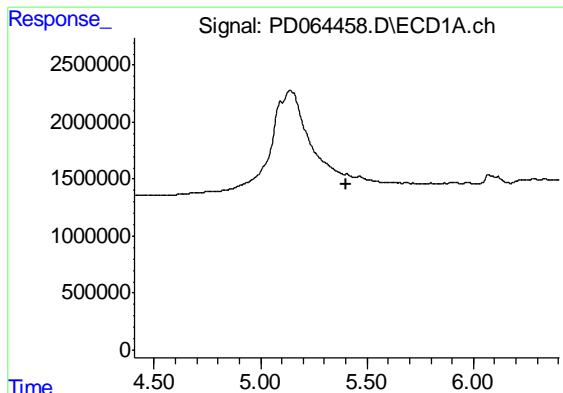
Data Path : Z:\pestpcbsrv\HPCHEM1\ECD\_D\Data\PD072721\  
 Data File : PD064458.D  
 Signal(s) : Signal #1: ECD1A.ch Signal #2: ECD2B.ch  
 Acq On : 28 Jul 2021 08:47  
 Operator : AR\AJ  
 Sample : M3087-11  
 Misc :  
 ALS Vial : 20 Sample Multiplier: 1

Instrument :  
 ECD\_D  
 ClientSampled :  
 PEST-GPC2-BLANK

Integration File signal 1: autoint1.e  
 Integration File signal 2: autoint2.e  
 Quant Time: Jul 28 09:30:17 2021  
 Quant Method : Z:\pestpcbsrv\HPCHEM1\ECD\_D\Method\PD072721CLP.M  
 Quant Title : GC Extractables  
 QLast Update : Wed Jul 28 07:07:14 2021  
 Response via : Initial Calibration  
 Integrator: ChemStation

Volume Inj. : 1 µl  
 Signal #1 Phase : ZB-MR2 Signal #2 Phase: ZB-MR1  
 Signal #1 Info : 30M x 0.32mm x0.2 Signal #2 Info : 30M x 0.32mm x 0.50µm

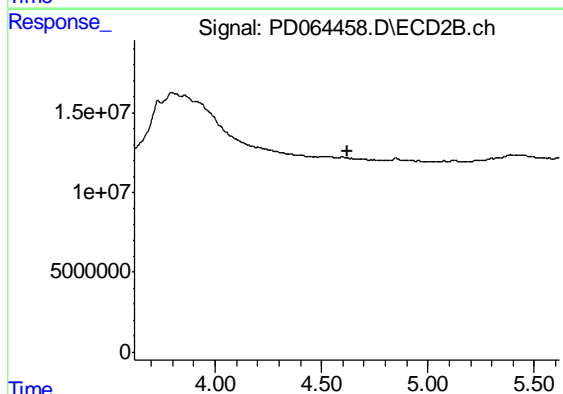




#1 Tetrachloro-m-xylene

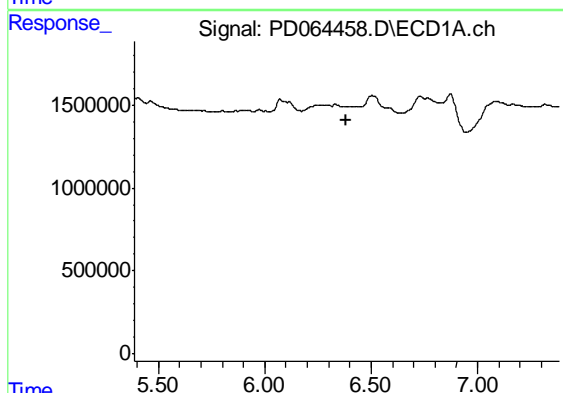
R.T.: 0.000 min  
 Exp R.T. : 5.405 min  
 Response: 0  
 Conc: N.D.

Instrument :  
 ECD\_D  
 ClientSampleId :  
 PEST-GPC2-BLANK



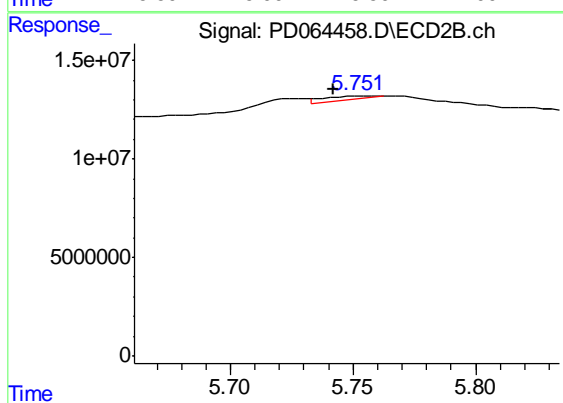
#1 Tetrachloro-m-xylene

R.T.: 0.000 min  
 Exp R.T. : 4.620 min  
 Response: 0  
 Conc: N.D.



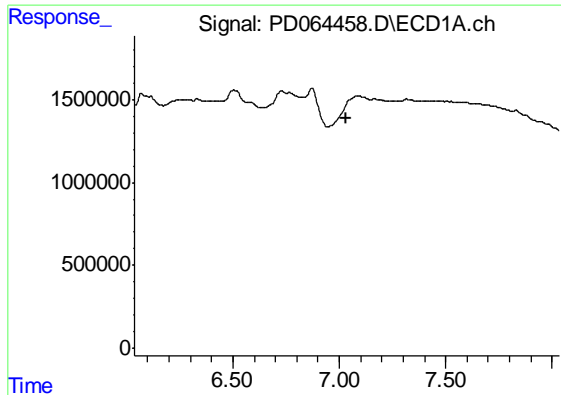
#3 gamma-BHC (Lindane)

R.T.: 0.000 min  
 Exp R.T. : 6.385 min  
 Response: 0  
 Conc: N.D.



#3 gamma-BHC (Lindane)

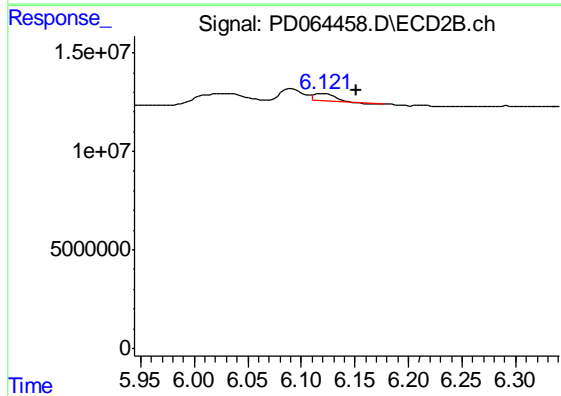
R.T.: 5.754 min  
 Delta R.T.: 0.012 min  
 Response: 2793927  
 Conc: 0.25 ng/ml



#4 Heptachlor

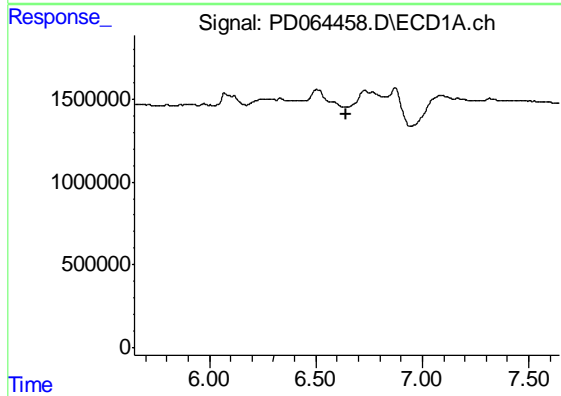
R.T.: 0.000 min  
 Exp R.T. : 7.035 min  
 Response: 0  
 Conc: N.D.

Instrument :  
 ECD\_D  
 ClientSampleId :  
 PEST-GPC2-BLANK



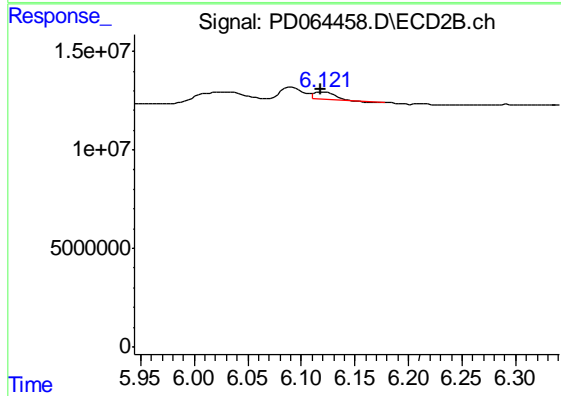
#4 Heptachlor

R.T.: 6.121 min  
 Delta R.T.: -0.030 min  
 Response: 4879194  
 Conc: 0.43 ng/ml



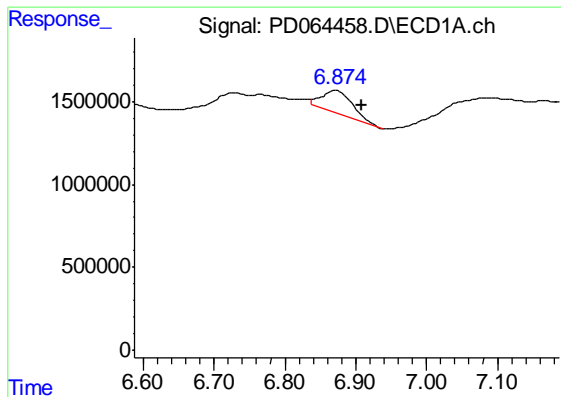
#6 beta-BHC

R.T.: 0.000 min  
 Exp R.T. : 6.644 min  
 Response: 0  
 Conc: N.D.



#6 beta-BHC

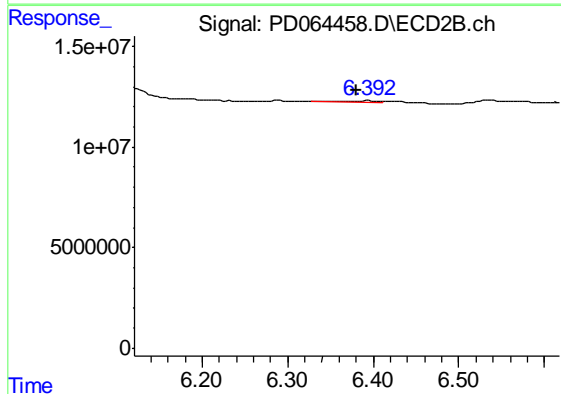
R.T.: 6.121 min  
 Delta R.T.: 0.003 min  
 Response: 4879194  
 Conc: 0.80 ng/ml



#7 delta-BHC

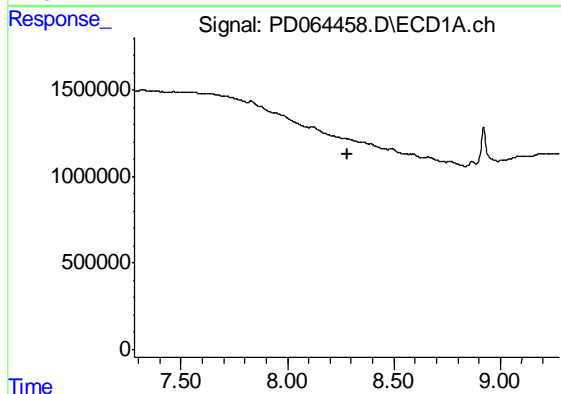
R.T.: 6.873 min  
 Delta R.T.: -0.036 min  
 Response: 4134403  
 Conc: 2.38 ng/ml

Instrument :  
 ECD\_D  
 ClientSampleId :  
 PEST-GPC2-BLANK



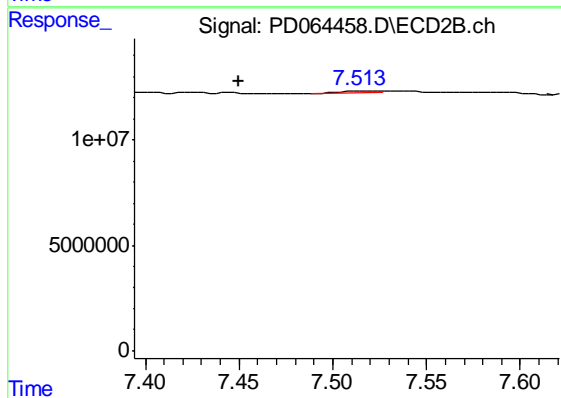
#7 delta-BHC

R.T.: 6.394 min  
 Delta R.T.: 0.014 min  
 Response: 2111747  
 Conc: 0.19 ng/ml



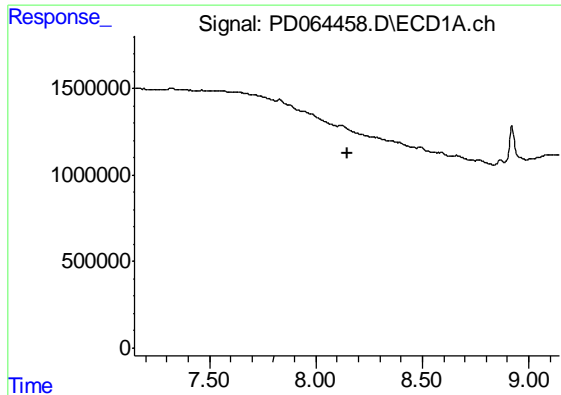
#9 Endosulfan I

R.T.: 0.000 min  
 Exp R.T. : 8.279 min  
 Response: 0  
 Conc: N.D.



#9 Endosulfan I

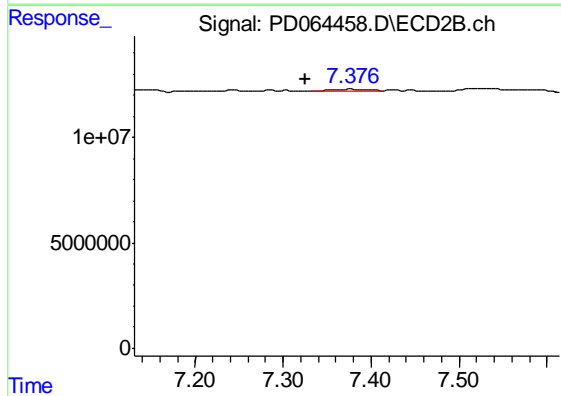
R.T.: 7.514 min  
 Delta R.T.: 0.064 min  
 Response: 1372281  
 Conc: 0.18 ng/ml



#10 trans-Chlordane

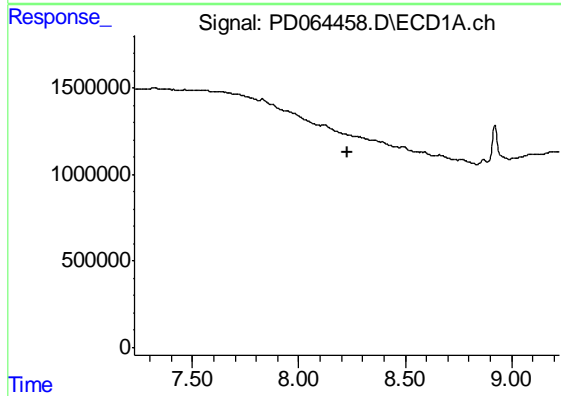
R.T.: 0.000 min  
 Exp R.T. : 8.146 min  
 Response: 0  
 Conc: N.D.

Instrument :  
 ECD\_D  
 ClientSampleId :  
 PEST-GPC2-BLANK



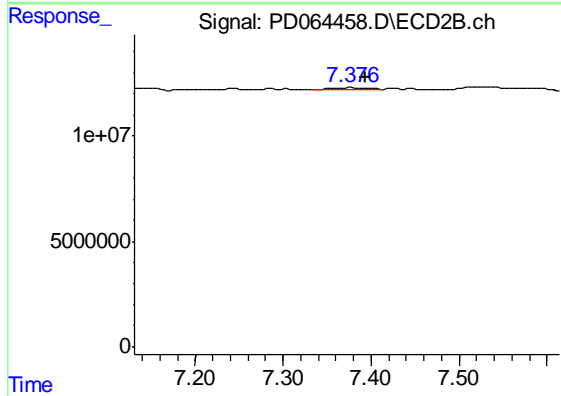
#10 trans-Chlordane

R.T.: 7.377 min  
 Delta R.T.: 0.052 min  
 Response: 1517173  
 Conc: 0.17 ng/ml



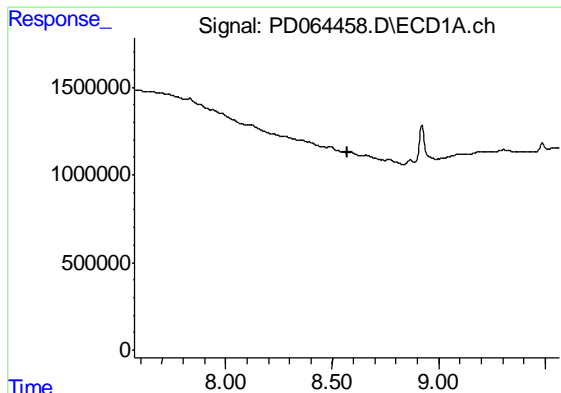
#11 cis-Chlordane

R.T.: 0.000 min  
 Exp R.T. : 8.227 min  
 Response: 0  
 Conc: N.D.



#11 cis-Chlordane

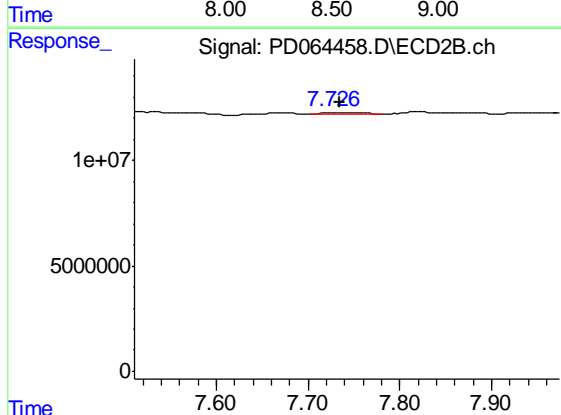
R.T.: 7.377 min  
 Delta R.T.: -0.017 min  
 Response: 1517173  
 Conc: 0.17 ng/ml



#13 Dieldrin

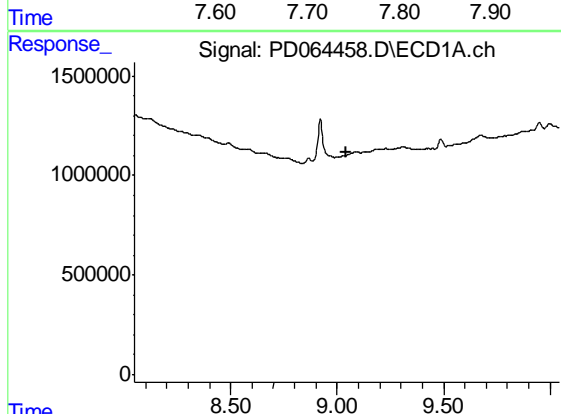
R.T.: 0.000 min  
 Exp R.T. : 8.570 min  
 Response: 0  
 Conc: N.D.

Instrument :  
 ECD\_D  
 ClientSampleId :  
 PEST-GPC2-BLANK



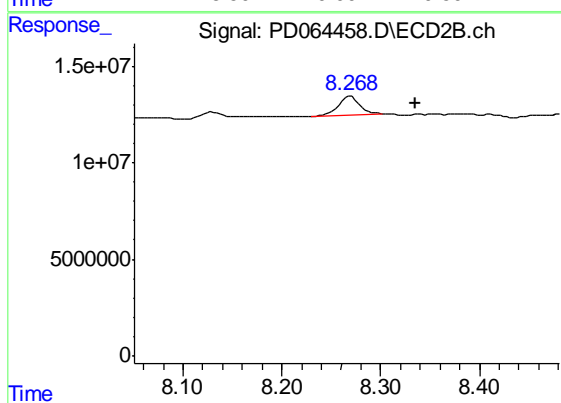
#13 Dieldrin

R.T.: 7.727 min  
 Delta R.T.: -0.008 min  
 Response: 2119532  
 Conc: 0.26 ng/ml



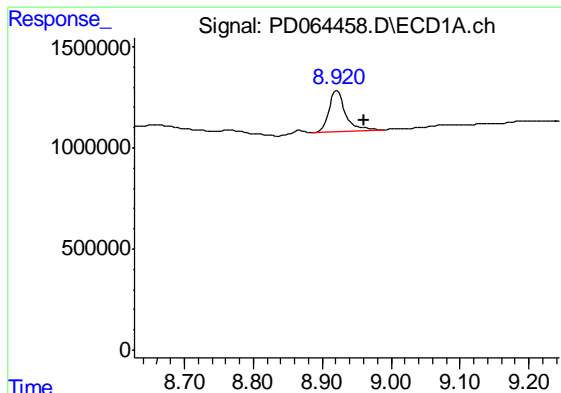
#15 Endosulfan II

R.T.: 0.000 min  
 Exp R.T. : 9.045 min  
 Response: 0  
 Conc: N.D.



#15 Endosulfan II

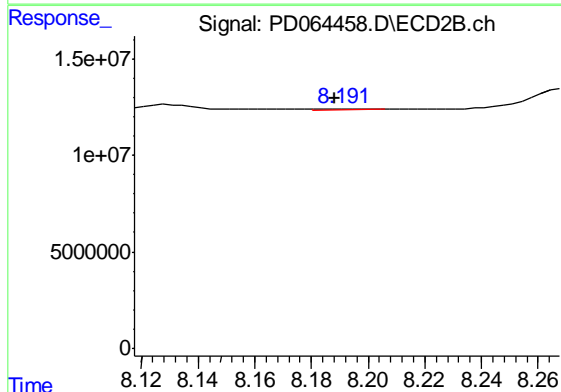
R.T.: 8.269 min  
 Delta R.T.: -0.065 min  
 Response: 14174245  
 Conc: 2.46 ng/ml



#16 4,4'-DDD

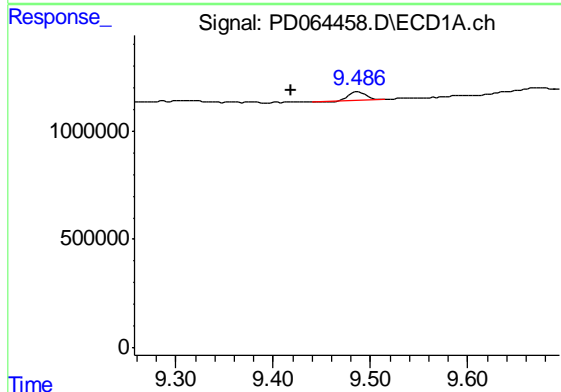
R.T.: 8.922 min  
 Delta R.T.: -0.040 min  
 Response: 3455266  
 Conc: 2.81 ng/ml

Instrument :  
 ECD\_D  
 ClientSampleId :  
 PEST-GPC2-BLANK



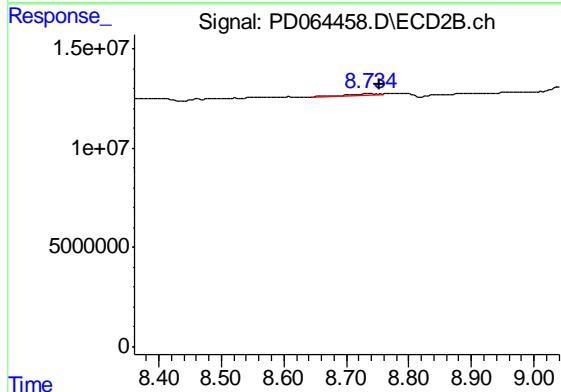
#16 4,4'-DDD

R.T.: 8.192 min  
 Delta R.T.: 0.004 min  
 Response: 499136  
 Conc: N.D.



#19 Endosulfan Sulfate

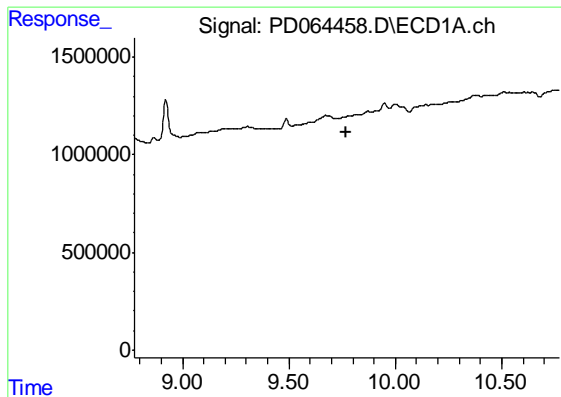
R.T.: 9.488 min  
 Delta R.T.: 0.069 min  
 Response: 516852  
 Conc: 0.38 ng/ml



#19 Endosulfan Sulfate

R.T.: 8.736 min  
 Delta R.T.: -0.016 min  
 Response: 864853  
 Conc: 0.16 ng/ml

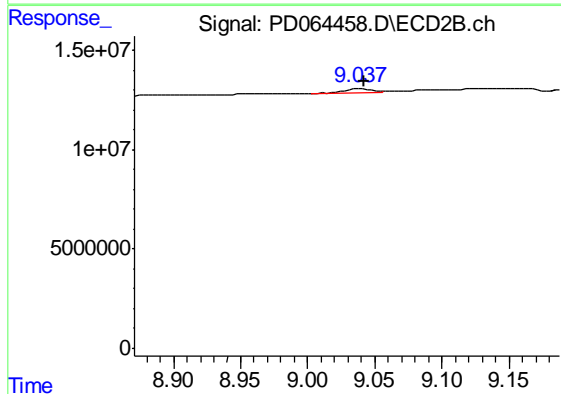




#20 Methoxychlor

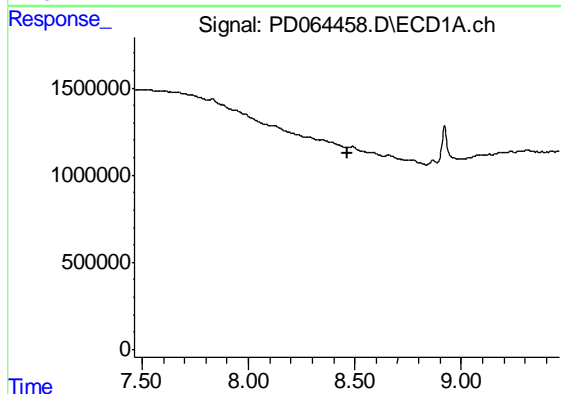
R.T.: 0.000 min  
 Exp R.T. : 9.771 min  
 Response: 0  
 Conc: N.D.

Instrument :  
 ECD\_D  
 ClientSampleId :  
 PEST-GPC2-BLANK



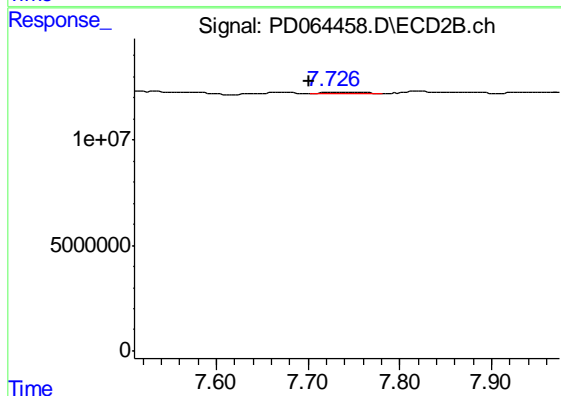
#20 Methoxychlor

R.T.: 9.039 min  
 Delta R.T.: -0.003 min  
 Response: 3263620  
 Conc: 1.27 ng/ml



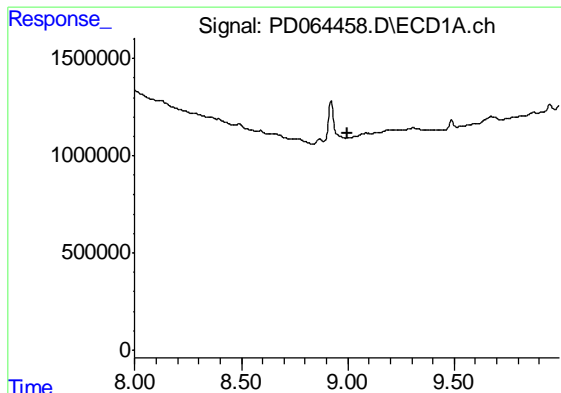
#22 Toxaphene-1

R.T.: 0.000 min  
 Exp R.T. : 8.463 min  
 Response: 0  
 Conc: N.D.



#22 Toxaphene-1

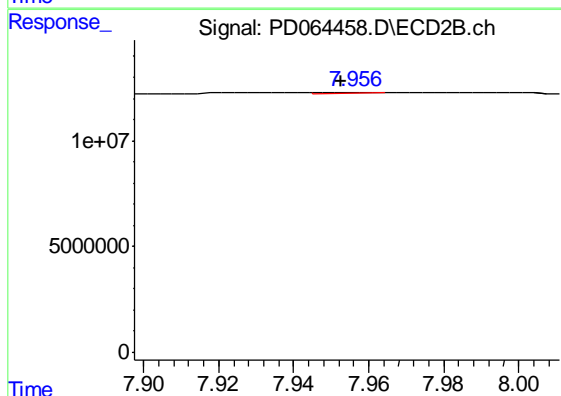
R.T.: 7.727 min  
 Delta R.T.: 0.026 min  
 Response: 2119532  
 Conc: 56.33 ng/ml



#23 Toxaphene-2

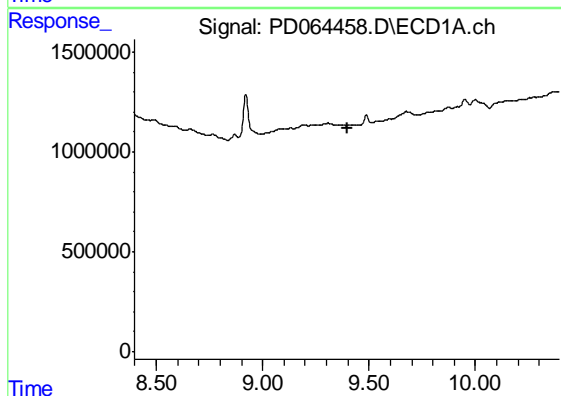
R.T.: 0.000 min  
 Exp R.T. : 8.996 min  
 Response: 0  
 Conc: N.D.

Instrument :  
 ECD\_D  
 ClientSampleId :  
 PEST-GPC2-BLANK



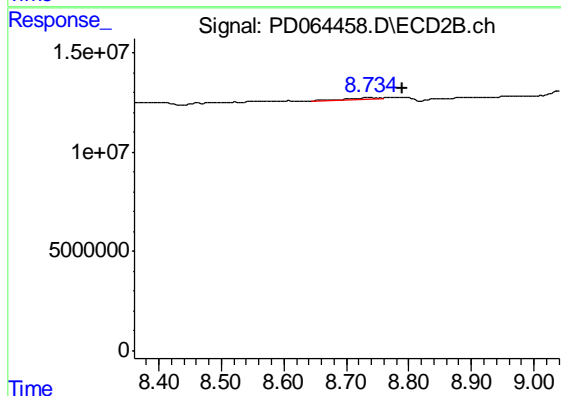
#23 Toxaphene-2

R.T.: 7.956 min  
 Delta R.T.: 0.003 min  
 Response: 141442  
 Conc: 1.67 ng/ml



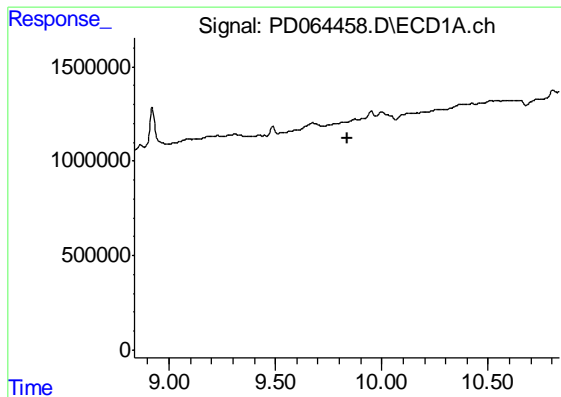
#25 Toxaphene-4

R.T.: 0.000 min  
 Exp R.T. : 9.397 min  
 Response: 0  
 Conc: N.D.



#25 Toxaphene-4

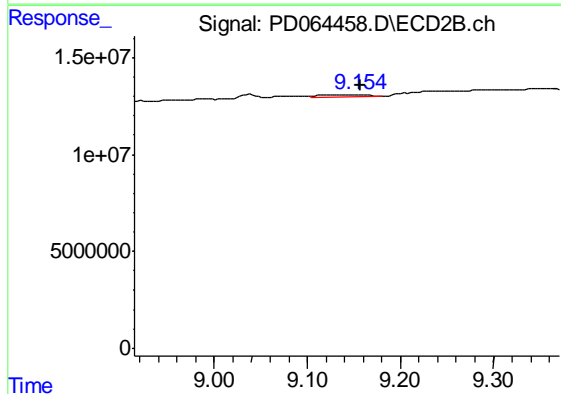
R.T.: 8.736 min  
 Delta R.T.: -0.054 min  
 Response: 864853  
 Conc: 15.35 ng/ml



#26 Toxaphene-5

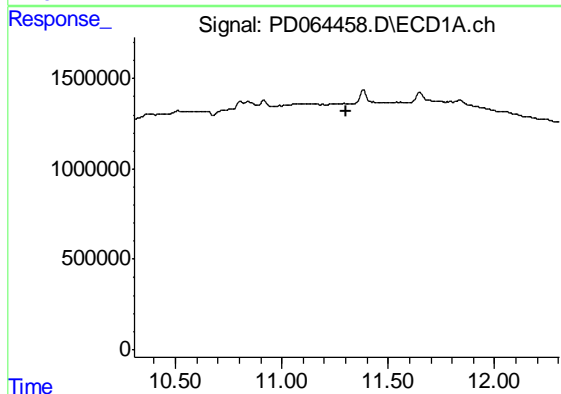
R.T.: 0.000 min  
 Exp R.T. : 9.836 min  
 Response: 0  
 Conc: N.D.

Instrument :  
 ECD\_D  
 ClientSampleId :  
 PEST-GPC2-BLANK



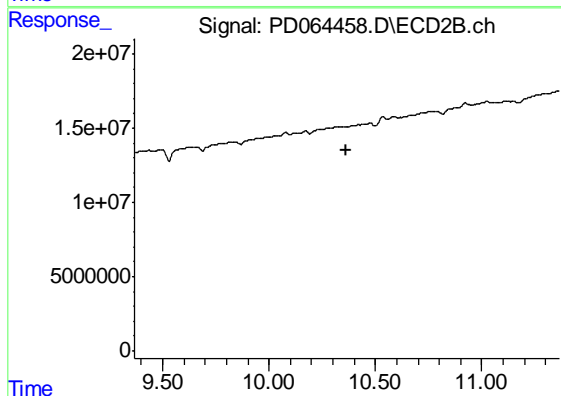
#26 Toxaphene-5

R.T.: 9.156 min  
 Delta R.T.: -0.001 min  
 Response: 5271080  
 Conc: 41.93 ng/ml



#27 Decachlorobiphenyl

R.T.: 0.000 min  
 Exp R.T. : 11.305 min  
 Response: 0  
 Conc: N.D.



#27 Decachlorobiphenyl

R.T.: 0.000 min  
 Exp R.T. : 10.365 min  
 Response: 0  
 Conc: N.D.