

Data Path : Z:\pestpcbsrv\HPCHEM1\ECD\_D\Data\PD072721\  
 Data File : PD064469.D  
 Signal(s) : Signal #1: ECD1A.ch Signal #2: ECD2B.ch  
 Acq On : 28 Jul 2021 12:53  
 Operator : AR\AJ  
 Sample : M3062-04  
 Misc :  
 ALS Vial : 33 Sample Multiplier: 1

Instrument :  
 ECD\_D  
 ClientSampleId :  
 JLX89

Integration File signal 1: autoint1.e  
 Integration File signal 2: autoint2.e  
 Quant Time: Jul 29 04:22:06 2021  
 Quant Method : Z:\pestpcbsrv\HPCHEM1\ECD\_D\Method\PD072721CLP.M  
 Quant Title : GC Extractables  
 QLast Update : Wed Jul 28 07:07:14 2021  
 Response via : Initial Calibration  
 Integrator: ChemStation

Volume Inj. : 1 µl  
 Signal #1 Phase : ZB-MR2 Signal #2 Phase: ZB-MR1  
 Signal #1 Info : 30M x 0.32mm x0.2 Signal #2 Info : 30M x 0.32mm x 0.50µm

	Compound	RT#1	RT#2	Resp#1	Resp#2	ng/ml	ng/ml
-----							
System Monitoring Compounds							
1)	SA Tetrachlo...	5.404	4.619	12844940	103.2E6	10.768	11.292
27)	SA Decachlor...	11.303	10.364	20875697	98489718	15.858	16.562
Target Compounds							
2)	A alpha-BHC	5.972	5.341	1781225	919684	1.093	<MDL #
3)	MA gamma-BHC...	0.000	5.765	0	10152606	N.D.	0.890
4)	MA Heptachlor	0.000	6.120f	0	8774568	N.D.	0.774
6)	B beta-BHC	0.000	6.120	0	8774568	N.D.	1.446
7)	B delta-BHC	6.874f	6.378	4456200	1277567	2.561	0.118 #
8)	B Heptachlo...	0.000	7.049	0	1008198	N.D.	0.109
9)	A Endosulfan I	0.000	7.450	0	1045445	N.D.	0.136
10)	B trans-Chl...	0.000	7.373f	0	3008511	N.D.	0.332
11)	B cis-Chlor...	0.000	7.388	0	2672289	N.D.	0.300
12)	B 4,4'-DDE	0.000	7.603	0	1856599	N.D.	0.246
13)	MA Dieldrin	0.000	7.736	0	1092328	N.D.	0.136
14)	MA Endrin	0.000	7.983f	0	323094	N.D.	<MDL
15)	B Endosulfa...	9.078	8.269f	247426	14494225	0.191	2.511 #
16)	A 4,4'-DDD	8.920f	8.187	4860379	755748	3.959	0.131 #
20)	A Methoxychlor	0.000	9.042	0	864440	N.D.	0.338
21)	B Endrin ke...	0.000	9.270	0	393654	N.D.	<MDL
22)	Toxaphene-1	0.000	7.736	0	1092328	N.D.	29.032
23)	Toxaphene-2	0.000	7.967	0	2594693	N.D.	30.725
26)	Toxaphene-5	0.000	9.159	0	1623617	N.D.	12.915

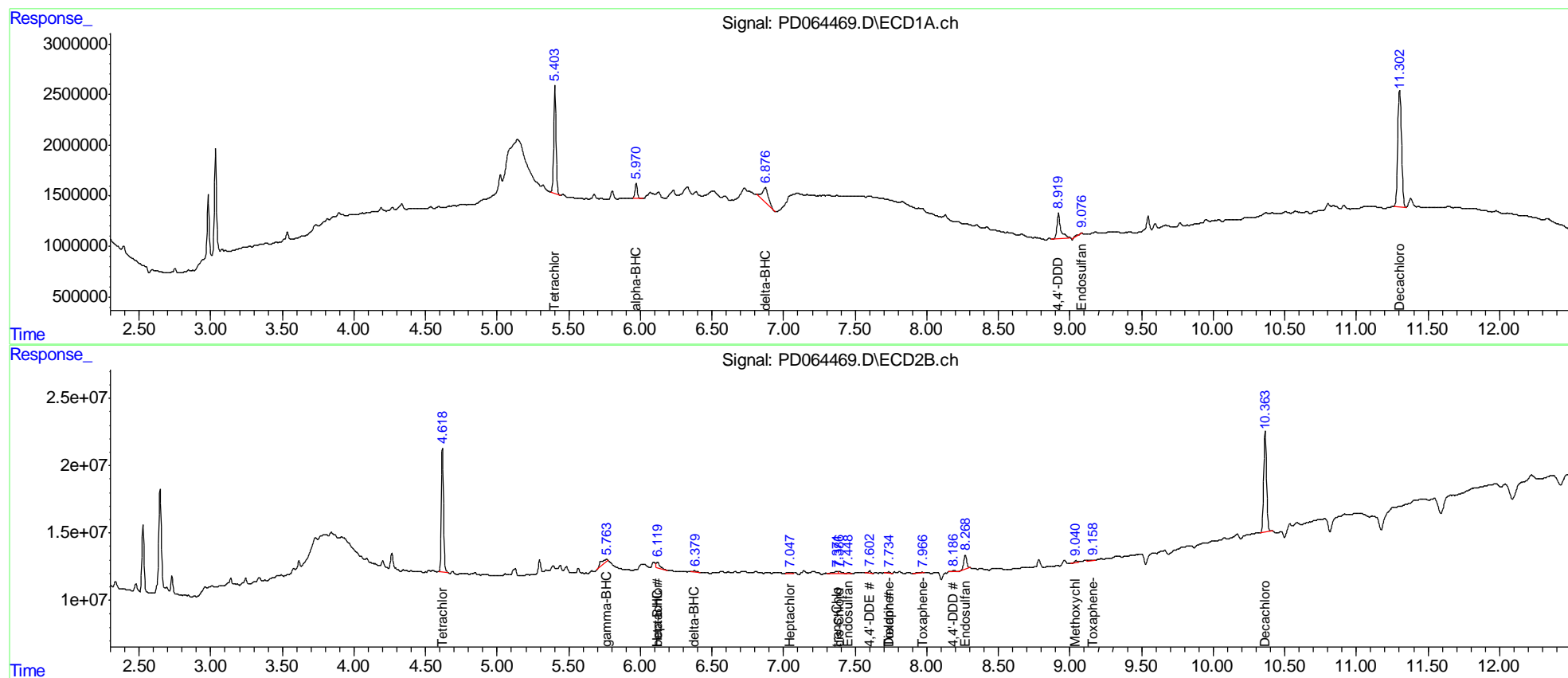
(f)=RT Delta > 1/2 Window (#)=Amounts differ by > 25% (m)=manual int.

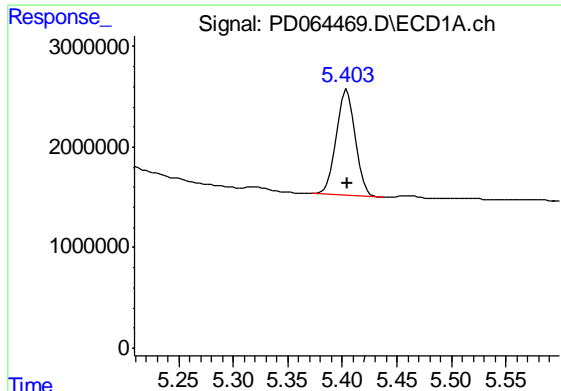
Data Path : Z:\pestpcbsrv\HPCHEM1\ECD\_D\Data\PD072721\  
 Data File : PD064469.D  
 Signal(s) : Signal #1: ECD1A.ch Signal #2: ECD2B.ch  
 Acq On : 28 Jul 2021 12:53  
 Operator : AR\AJ  
 Sample : M3062-04  
 Misc :  
 ALS Vial : 33 Sample Multiplier: 1

Instrument :  
 ECD\_D  
 ClientSampleId :  
 JLX89

Integration File signal 1: autoint1.e  
 Integration File signal 2: autoint2.e  
 Quant Time: Jul 29 04:22:06 2021  
 Quant Method : Z:\pestpcbsrv\HPCHEM1\ECD\_D\Method\PD072721CLP.M  
 Quant Title : GC Extractables  
 QLast Update : Wed Jul 28 07:07:14 2021  
 Response via : Initial Calibration  
 Integrator: ChemStation

Volume Inj. : 1 µl  
 Signal #1 Phase : ZB-MR2 Signal #2 Phase: ZB-MR1  
 Signal #1 Info : 30M x 0.32mm x0.2 Signal #2 Info : 30M x 0.32mm x 0.50µm

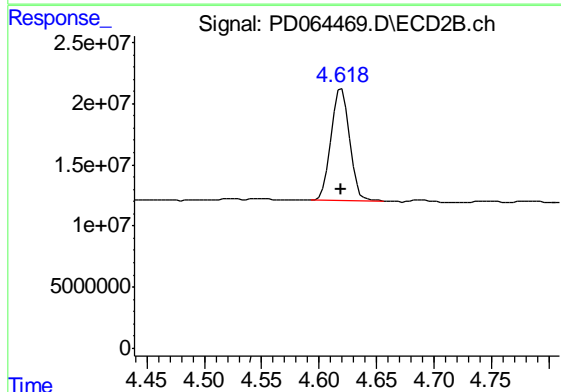




#1 Tetrachloro-m-xylene

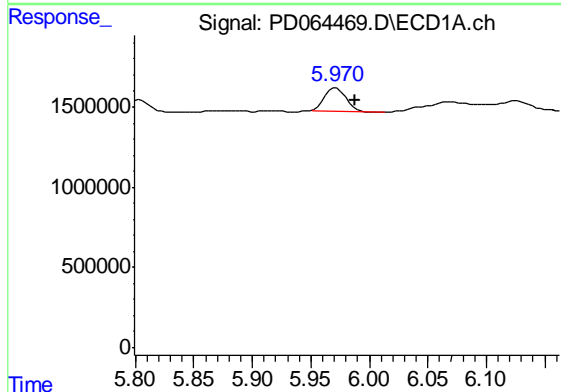
R.T.: 5.404 min  
 Delta R.T.: 0.000 min  
 Response: 12844940  
 Conc: 10.77 ng/ml

Instrument :  
 ECD\_D  
 ClientSampled :  
 JLX89



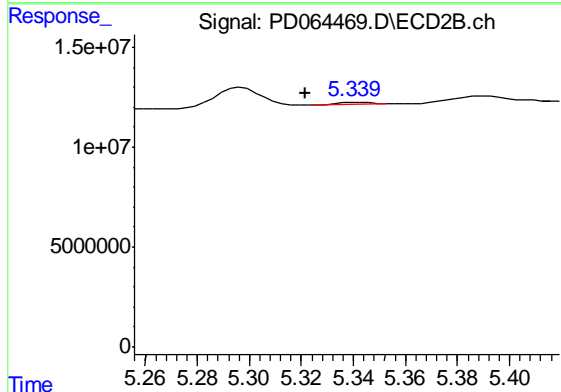
#1 Tetrachloro-m-xylene

R.T.: 4.619 min  
 Delta R.T.: 0.000 min  
 Response: 103185005  
 Conc: 11.29 ng/ml



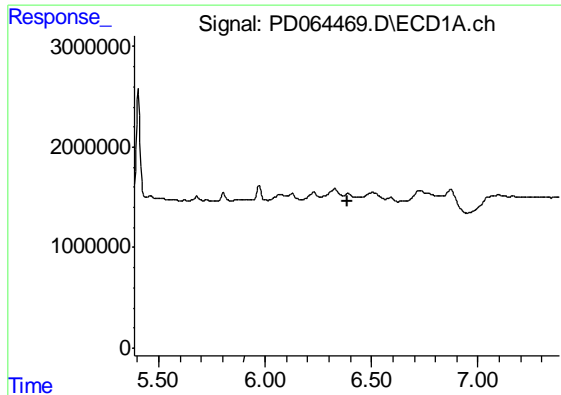
#2 alpha-BHC

R.T.: 5.972 min  
 Delta R.T.: -0.016 min  
 Response: 1781225  
 Conc: 1.09 ng/ml



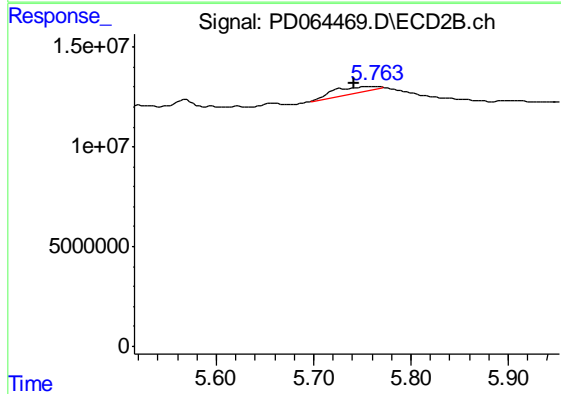
#2 alpha-BHC

R.T.: 5.341 min  
 Delta R.T.: 0.020 min  
 Response: 919684  
 Conc: N.D.

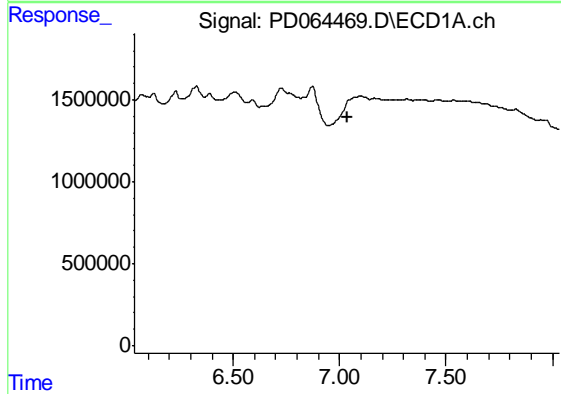


#3 gamma-BHC (Lindane)  
 R.T.: 0.000 min  
 Exp R.T. : 6.385 min  
 Response: 0  
 Conc: N.D.

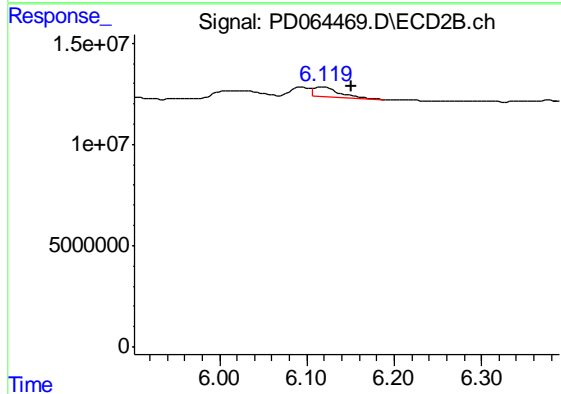
Instrument :  
 ECD\_D  
 ClientSampleId :  
 JLX89



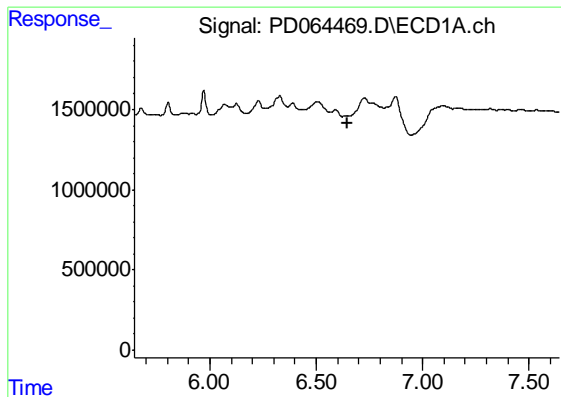
#3 gamma-BHC (Lindane)  
 R.T.: 5.765 min  
 Delta R.T.: 0.023 min  
 Response: 10152606  
 Conc: 0.89 ng/ml



#4 Heptachlor  
 R.T.: 0.000 min  
 Exp R.T. : 7.035 min  
 Response: 0  
 Conc: N.D.



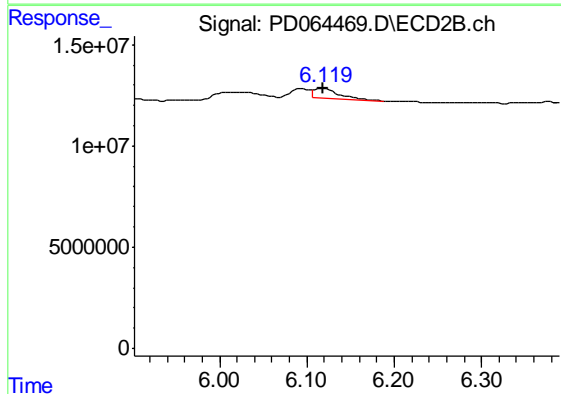
#4 Heptachlor  
 R.T.: 6.120 min  
 Delta R.T.: -0.032 min  
 Response: 8774568  
 Conc: 0.77 ng/ml



#6 beta-BHC

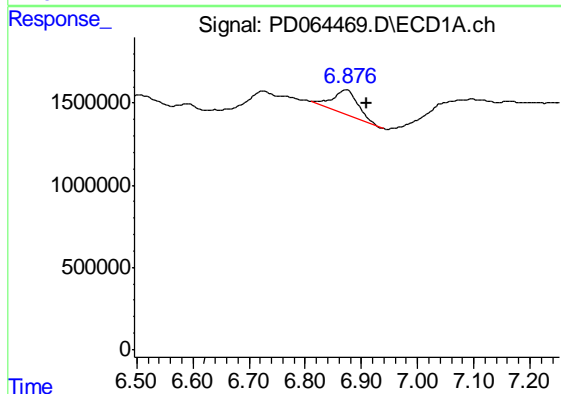
R.T.: 0.000 min  
 Exp R.T. : 6.644 min  
 Response: 0  
 Conc: N.D.

Instrument :  
 ECD\_D  
 ClientSampleId :  
 JLX89



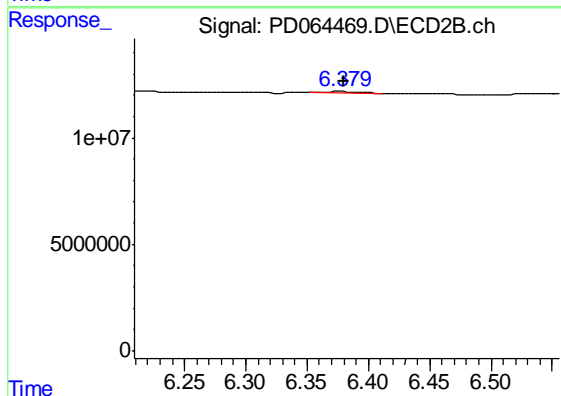
#6 beta-BHC

R.T.: 6.120 min  
 Delta R.T.: 0.001 min  
 Response: 8774568  
 Conc: 1.45 ng/ml



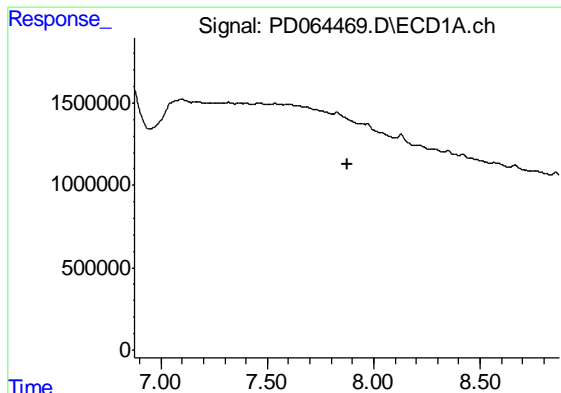
#7 delta-BHC

R.T.: 6.874 min  
 Delta R.T.: -0.034 min  
 Response: 4456200  
 Conc: 2.56 ng/ml



#7 delta-BHC

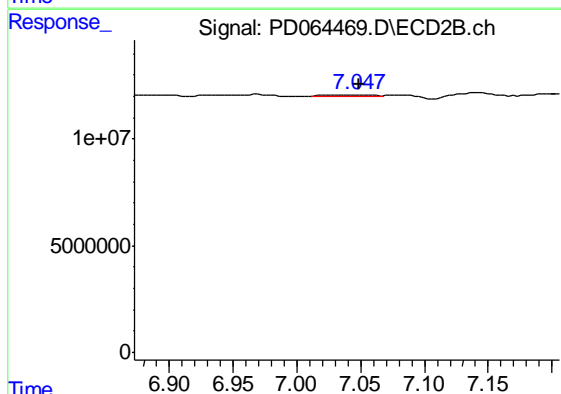
R.T.: 6.378 min  
 Delta R.T.: -0.001 min  
 Response: 1277567  
 Conc: 0.12 ng/ml



#8 Heptachlor epoxide

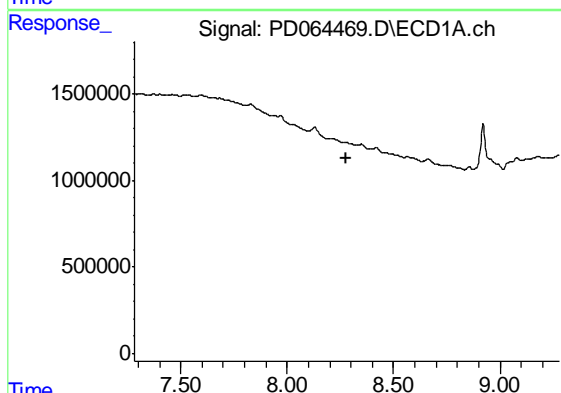
R.T.: 0.000 min  
 Exp R.T. : 7.876 min  
 Response: 0  
 Conc: N.D.

Instrument :  
 ECD\_D  
 ClientSampleId :  
 JLX89



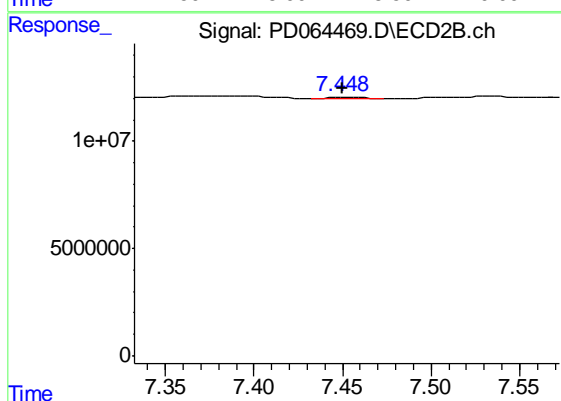
#8 Heptachlor epoxide

R.T.: 7.049 min  
 Delta R.T.: 0.000 min  
 Response: 1008198  
 Conc: 0.11 ng/ml



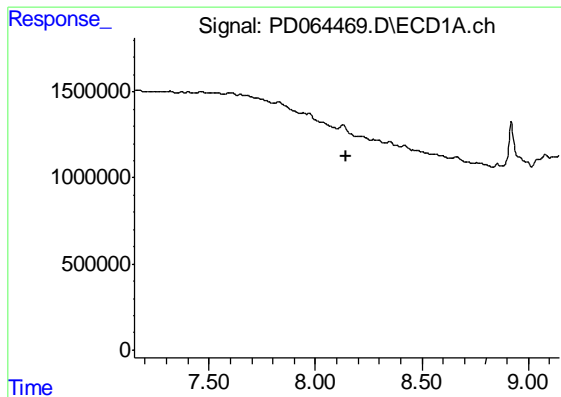
#9 Endosulfan I

R.T.: 0.000 min  
 Exp R.T. : 8.279 min  
 Response: 0  
 Conc: N.D.



#9 Endosulfan I

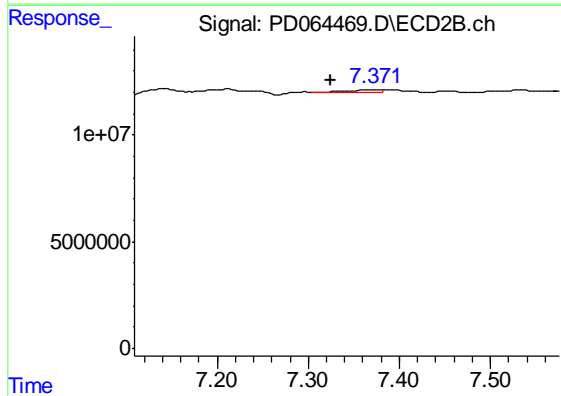
R.T.: 7.450 min  
 Delta R.T.: 0.000 min  
 Response: 1045445  
 Conc: 0.14 ng/ml



#10 trans-Chlordane

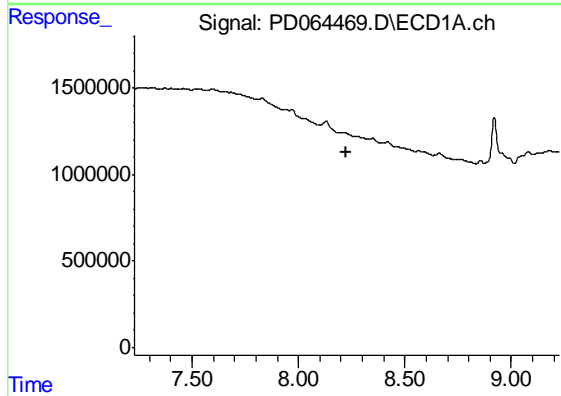
R.T.: 0.000 min  
 Exp R.T. : 8.146 min  
 Response: 0  
 Conc: N.D.

Instrument :  
 ECD\_D  
 ClientSampleId :  
 JLX89



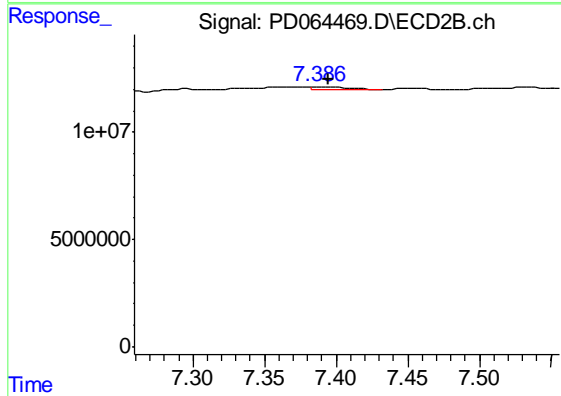
#10 trans-Chlordane

R.T.: 7.373 min  
 Delta R.T.: 0.048 min  
 Response: 3008511  
 Conc: 0.33 ng/ml



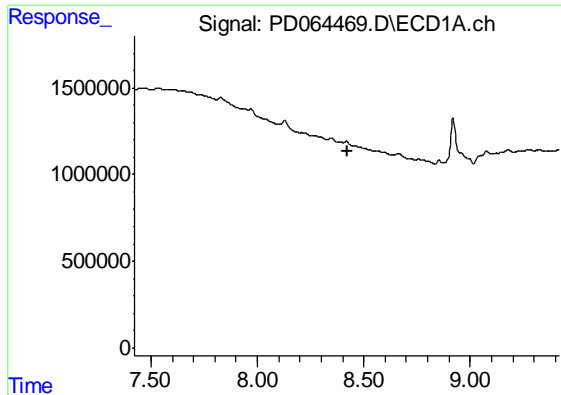
#11 cis-Chlordane

R.T.: 0.000 min  
 Exp R.T. : 8.227 min  
 Response: 0  
 Conc: N.D.



#11 cis-Chlordane

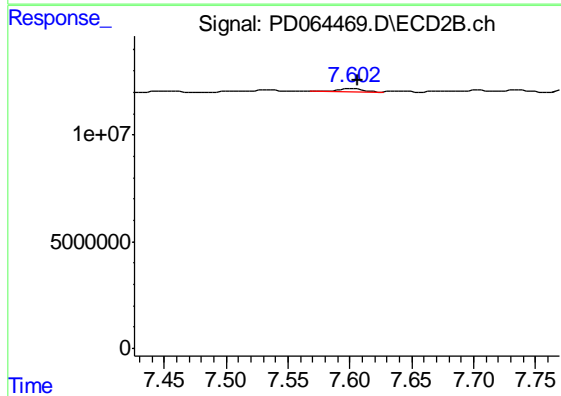
R.T.: 7.388 min  
 Delta R.T.: -0.006 min  
 Response: 2672289  
 Conc: 0.30 ng/ml



#12 4,4'-DDE

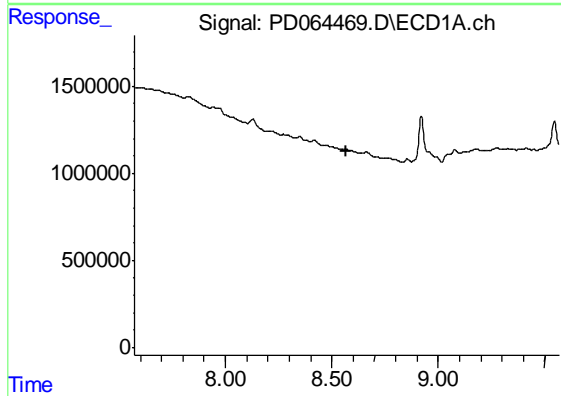
R.T.: 0.000 min  
 Exp R.T. : 8.422 min  
 Response: 0  
 Conc: N.D.

Instrument :  
 ECD\_D  
 ClientSampleId :  
 JLX89



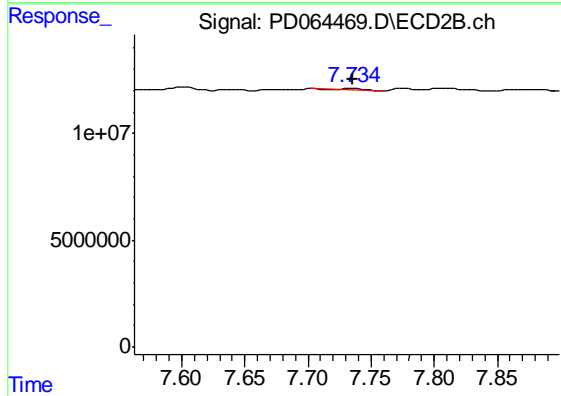
#12 4,4'-DDE

R.T.: 7.603 min  
 Delta R.T.: -0.003 min  
 Response: 1856599  
 Conc: 0.25 ng/ml



#13 Dieldrin

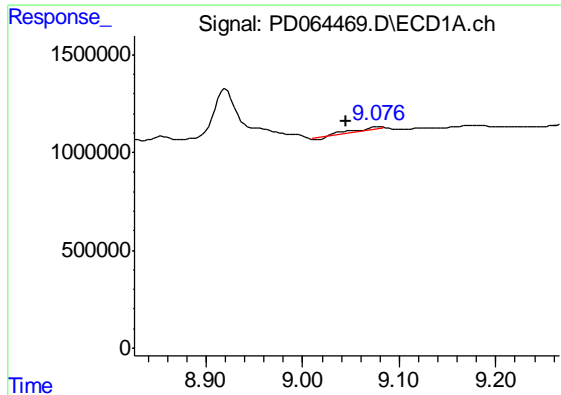
R.T.: 0.000 min  
 Exp R.T. : 8.570 min  
 Response: 0  
 Conc: N.D.



#13 Dieldrin

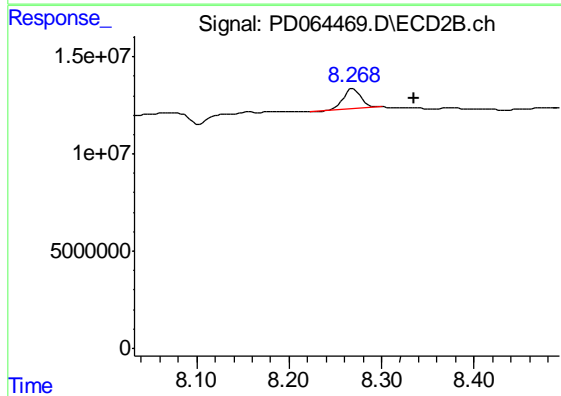
R.T.: 7.736 min  
 Delta R.T.: 0.000 min  
 Response: 1092328  
 Conc: 0.14 ng/ml



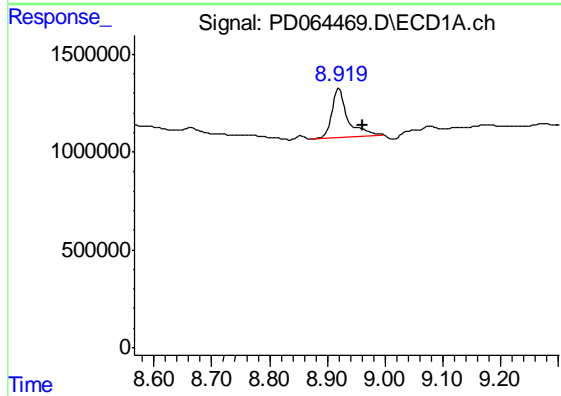


#15 Endosulfan II  
 R.T.: 9.078 min  
 Delta R.T.: 0.033 min  
 Response: 247426  
 Conc: 0.19 ng/ml

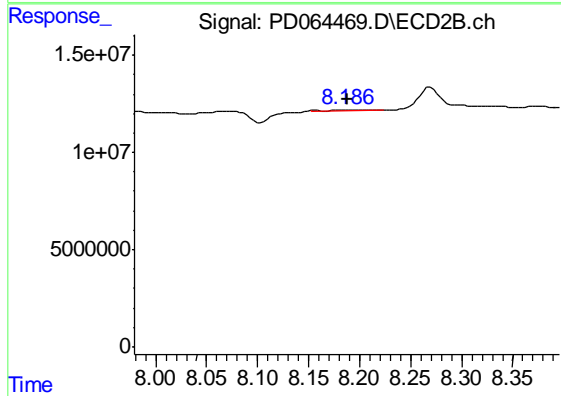
Instrument :  
 ECD\_D  
 ClientSampleId :  
 JLX89



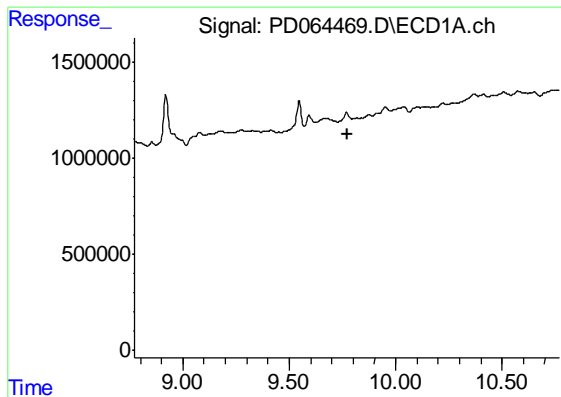
#15 Endosulfan II  
 R.T.: 8.269 min  
 Delta R.T.: -0.065 min  
 Response: 14494225  
 Conc: 2.51 ng/ml



#16 4,4'-DDD  
 R.T.: 8.920 min  
 Delta R.T.: -0.041 min  
 Response: 4860379  
 Conc: 3.96 ng/ml



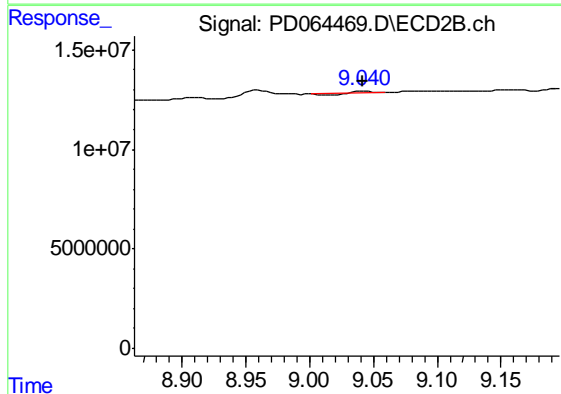
#16 4,4'-DDD  
 R.T.: 8.187 min  
 Delta R.T.: 0.000 min  
 Response: 755748  
 Conc: 0.13 ng/ml



#20 Methoxychlor

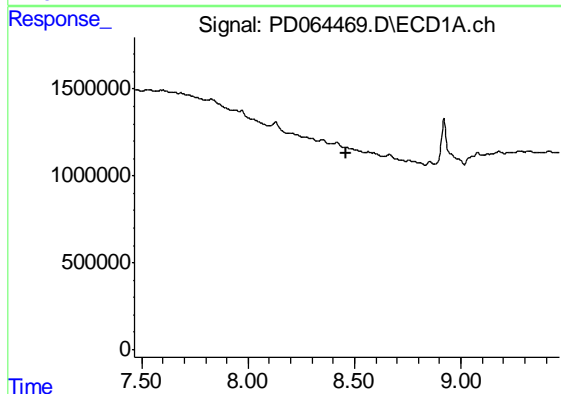
R.T.: 0.000 min  
 Exp R.T. : 9.771 min  
 Response: 0  
 Conc: N.D.

Instrument :  
 ECD\_D  
 ClientSampleId :  
 JLX89



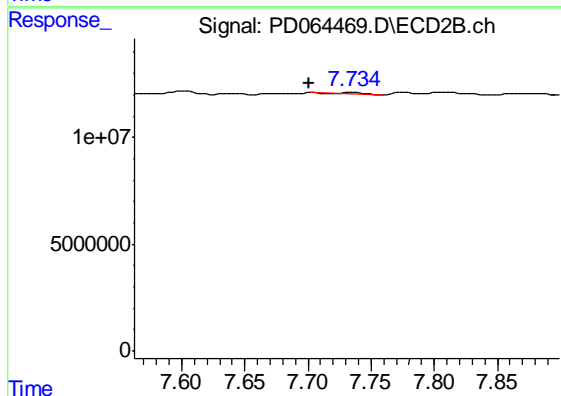
#20 Methoxychlor

R.T.: 9.042 min  
 Delta R.T.: 0.000 min  
 Response: 864440  
 Conc: 0.34 ng/ml



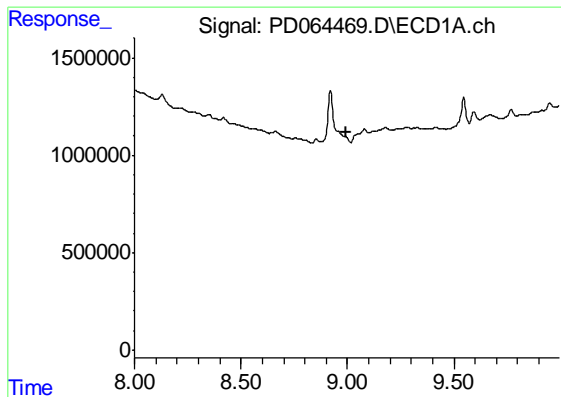
#22 Toxaphene-1

R.T.: 0.000 min  
 Exp R.T. : 8.463 min  
 Response: 0  
 Conc: N.D.



#22 Toxaphene-1

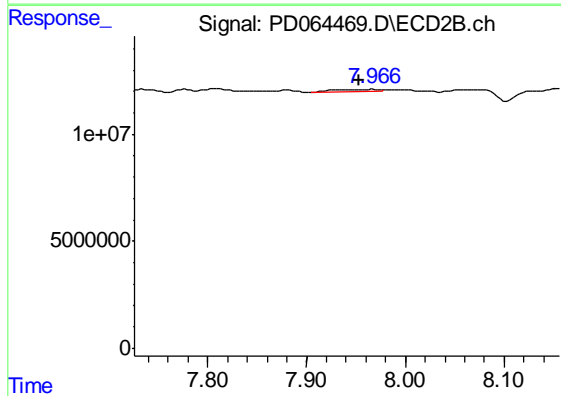
R.T.: 7.736 min  
 Delta R.T.: 0.035 min  
 Response: 1092328  
 Conc: 29.03 ng/ml



#23 Toxaphene-2

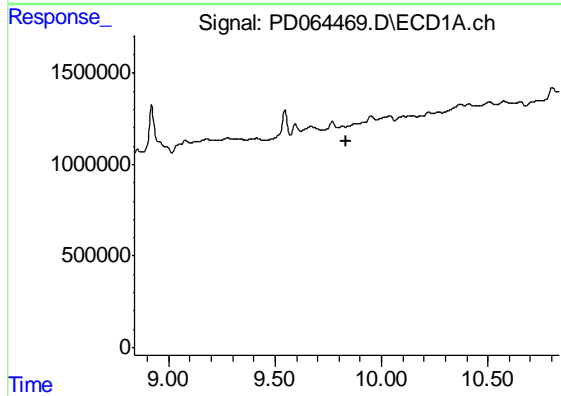
R.T.: 0.000 min  
 Exp R.T. : 8.996 min  
 Response: 0  
 Conc: N.D.

Instrument :  
 ECD\_D  
 ClientSampleId :  
 JLX89



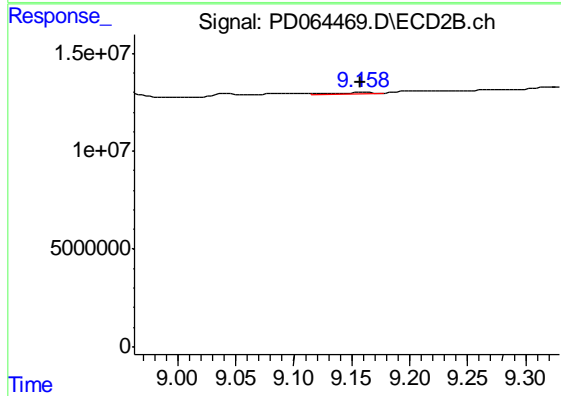
#23 Toxaphene-2

R.T.: 7.967 min  
 Delta R.T.: 0.014 min  
 Response: 2594693  
 Conc: 30.73 ng/ml



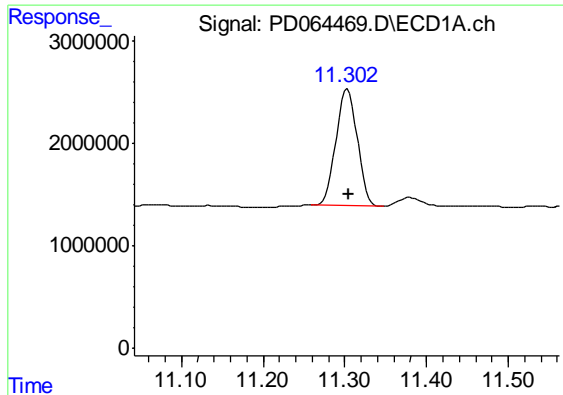
#26 Toxaphene-5

R.T.: 0.000 min  
 Exp R.T. : 9.836 min  
 Response: 0  
 Conc: N.D.



#26 Toxaphene-5

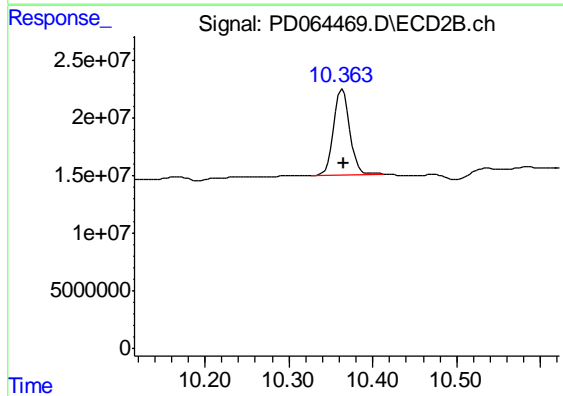
R.T.: 9.159 min  
 Delta R.T.: 0.002 min  
 Response: 1623617  
 Conc: 12.92 ng/ml



#27 Decachlorobiphenyl

R.T.: 11.303 min  
Delta R.T.: -0.002 min  
Response: 20875697  
Conc: 15.86 ng/ml

Instrument :  
ECD\_D  
ClientSampleId :  
JLX89



#27 Decachlorobiphenyl

R.T.: 10.364 min  
Delta R.T.: -0.001 min  
Response: 98489718  
Conc: 16.56 ng/ml