

Data Path : Z:\pestpcbsrv\HPCHEM1\ECD\_D\Data\PD072722\  
 Data File : PD071176.D  
 Signal(s) : Signal #1: ECD1A.ch Signal #2: ECD2B.ch  
 Acq On : 26 Jul 2022 12:44  
 Operator : AR\AJ  
 Sample : N3709-17  
 Misc :  
 ALS Vial : 10 Sample Multiplier: 1

Instrument :  
 ECD\_D  
 ClientSampleId :

Integration File signal 1: autoint1.e  
 Integration File signal 2: autoint2.e  
 Quant Time: Jul 27 03:22:50 2022  
 Quant Method : Z:\pestpcbsrv\HPCHEM1\ECD\_D\Method\PD071422CLP.M  
 Quant Title : GC Extractables  
 QLast Update : Thu Jul 14 05:14:58 2022  
 Response via : Initial Calibration  
 Integrator: ChemStation

Volume Inj. : 1 µl  
 Signal #1 Phase : ZB-MR2 Signal #2 Phase: ZB-MR1  
 Signal #1 Info : 30M x 0.32mm x0.2 Signal #2 Info : 30M x 0.32mm x 0.50µm

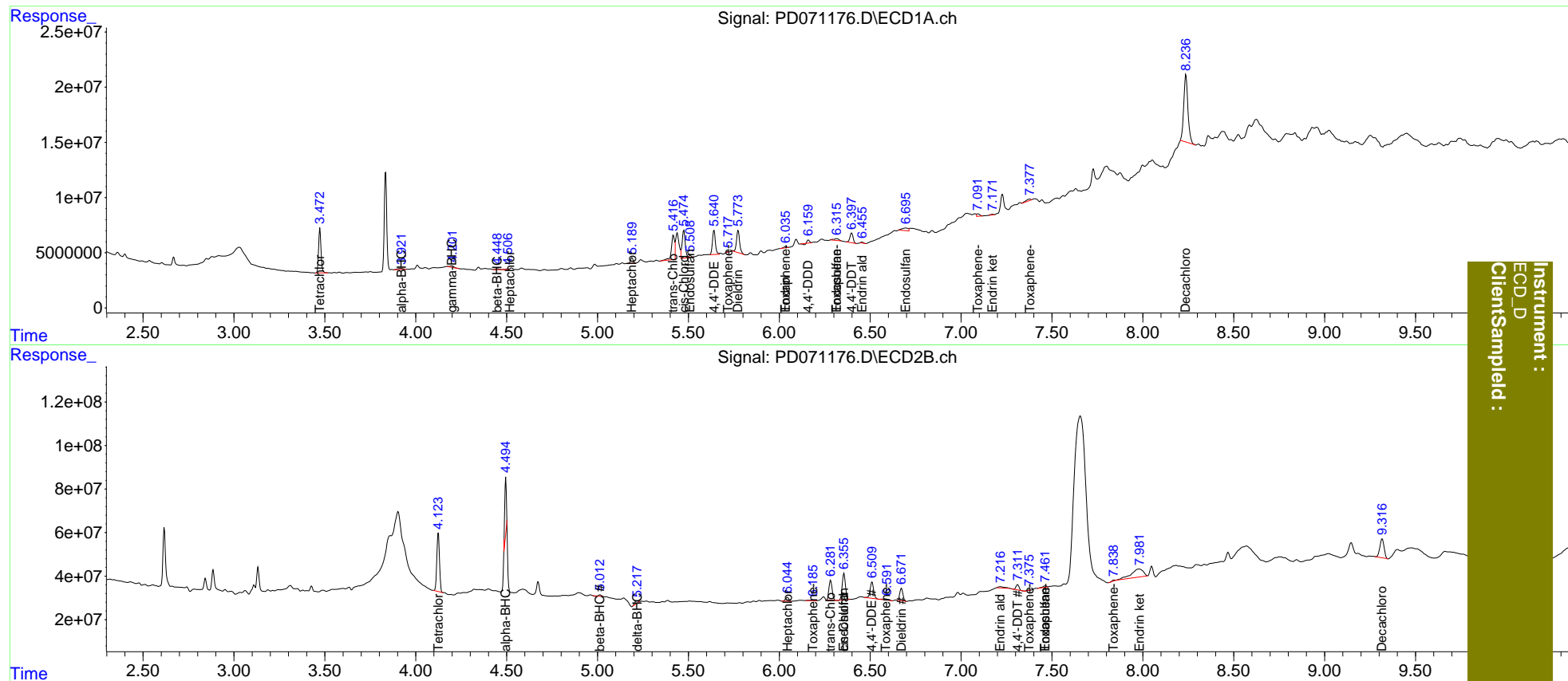
	Compound	RT#1	RT#2	Resp#1	Resp#2	ng/ml	ng/ml
-----							
System Monitoring Compounds							
1)	SA Tetrachlo...	3.473	4.125	37699183	275.0E6	15.668	11.716 #
2)	SA Decachlor...	8.237	9.317	96557392	139.9E6	38.032	15.149 #
Target Compounds							
2)	A alpha-BHC	3.922	4.496f	2011923	173.1E6	0.536	5.735 #
3)	MA gamma-BHC...	4.200	4.813	1873687	618539	0.515	<MDL #
6)	B beta-BHC	4.450	5.014	765498	6323889	0.489	0.473
7)	B delta-BHC	4.623f	5.218	137264	15565744	<MDL	0.686 #
8)	B Heptachlo...	5.190	6.045	5020671	22042533	1.508	1.484
9)	A Endosulfan I	5.511	6.356f	1709455	148.6E6	0.567	11.204 #
10)	B trans-Chl...	5.417	6.283	26356445	111.8E6	7.573	7.427
11)	B cis-Chlor...	5.475	6.356	30385790	148.6E6	8.891	10.287
12)	B 4,4'-DDE	5.641	6.511	24516795	100.2E6	7.620	7.304
13)	MA Dieldrin	5.774	6.672	23817701	69775040	7.112	5.039 #
15)	B Endosulfa...	6.317	7.117	3118677	-3325961	1.137	N.D. #
16)	A 4,4'-DDD	6.160	7.012	1717796	-794583	0.660	N.D. #
17)	MA 4,4'-DDT	6.398	7.312	10678934	26983877	3.991	2.411 #
18)	B Endrin al...	6.456	7.218	734470	13969174	0.321	1.437 #
19)	B Endosulfa...	6.696	7.464	5592058	9717340	1.996	0.857 #
21)	B Endrin ke...	7.173	7.981f	742361	173.2E6	0.239	14.024 #
22)	Toxaphene-1	5.718	6.186	321736	5000218	20.766	118.760 #
23)	Toxaphene-2	6.037f	6.583	1205775	11336238	78.495	119.248 #
24)	Toxaphene-3	6.317	7.376	3118677	1361412	186.698	5.148 #
25)	Toxaphene-4	7.092	7.464	2635725	9717340	37.576	45.948
26)	Toxaphene-5	7.378	7.842	2558310	3092437	70.145	25.132 #

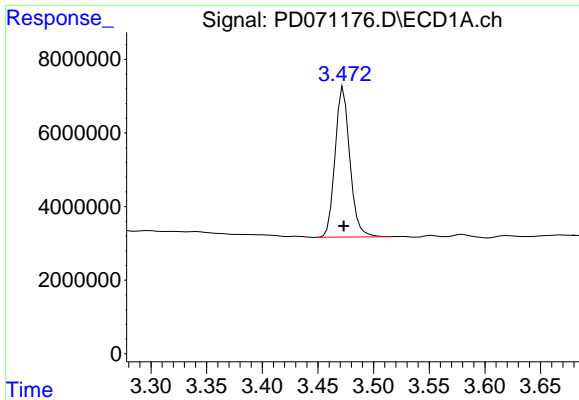
(f)=RT Delta > 1/2 Window (#)=Amounts differ by > 25% (m)=manual int.

Data Path : Z:\pestpcbsrv\HPCHEM1\ECD\_D\Data\PD072722\  
 Data File : PD071176.D  
 Signal(s) : Signal #1: ECD1A.ch Signal #2: ECD2B.ch  
 Acq On : 26 Jul 2022 12:44  
 Operator : AR\AJ  
 Sample : N3709-17  
 Misc :  
 ALS Vial : 10 Sample Multiplier: 1

Integration File signal 1: autoint1.e  
 Integration File signal 2: autoint2.e  
 Quant Time: Jul 27 03:22:50 2022  
 Quant Method : Z:\pestpcbsrv\HPCHEM1\ECD\_D\Method\PD071422CLP.M  
 Quant Title : GC Extractables  
 QLast Update : Thu Jul 14 05:14:58 2022  
 Response via : Initial Calibration  
 Integrator: ChemStation

Volume Inj. : 1 µl  
 Signal #1 Phase : ZB-MR2 Signal #2 Phase: ZB-MR1  
 Signal #1 Info : 30M x 0.32mm x0.2 Signal #2 Info : 30M x 0.32mm x 0.50µm

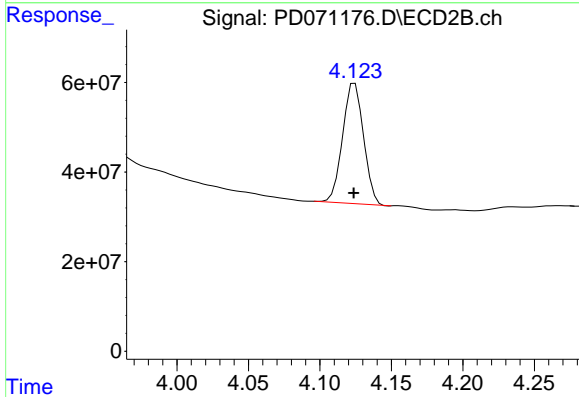




#1 Tetrachloro-m-xylene

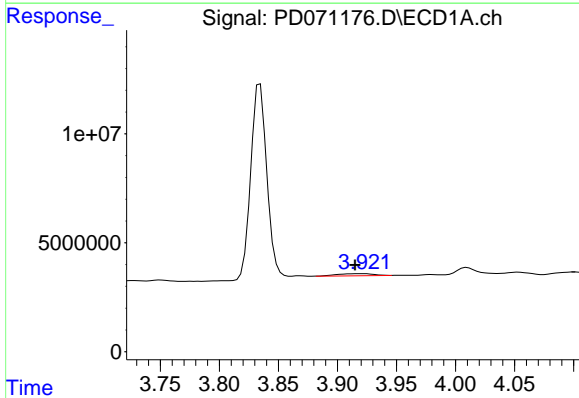
R.T.: 3.473 min  
 Delta R.T.: 0.000 min  
 Response: 37699183  
 Conc: 15.67 ng/ml

Instrument :  
 ECD\_D  
 ClientSampleId :



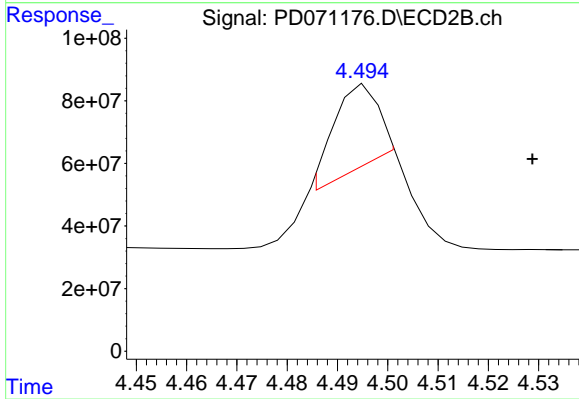
#1 Tetrachloro-m-xylene

R.T.: 4.125 min  
 Delta R.T.: 0.000 min  
 Response: 274963905  
 Conc: 11.72 ng/ml



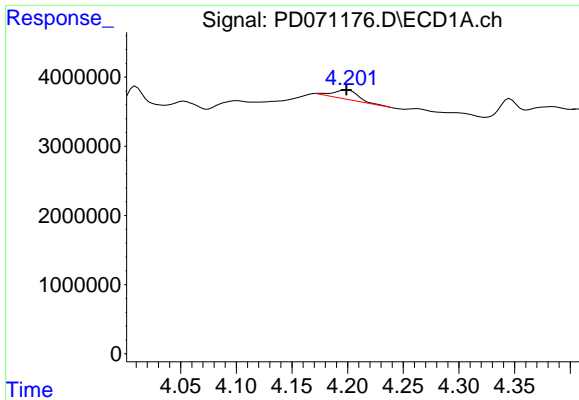
#2 alpha-BHC

R.T.: 3.922 min  
 Delta R.T.: 0.007 min  
 Response: 2011923  
 Conc: 0.54 ng/ml



#2 alpha-BHC

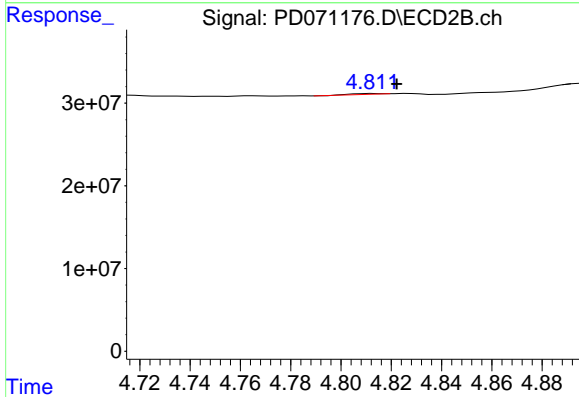
R.T.: 4.496 min  
 Delta R.T.: -0.033 min  
 Response: 173085324  
 Conc: 5.73 ng/ml



#3 gamma-BHC (Lindane)

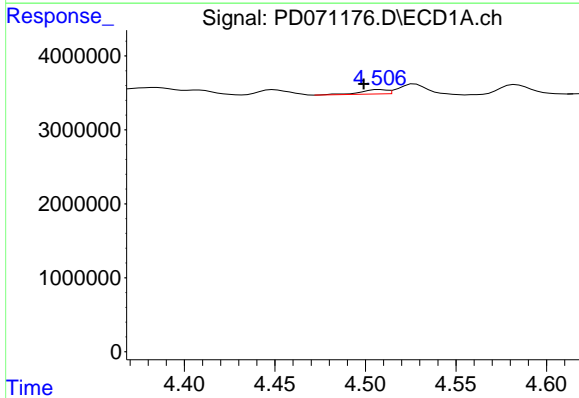
R.T.: 4.200 min  
 Delta R.T.: 0.000 min  
 Response: 1873687  
 Conc: 0.51 ng/ml

Instrument :  
 ECD\_D  
 ClientSampleId :



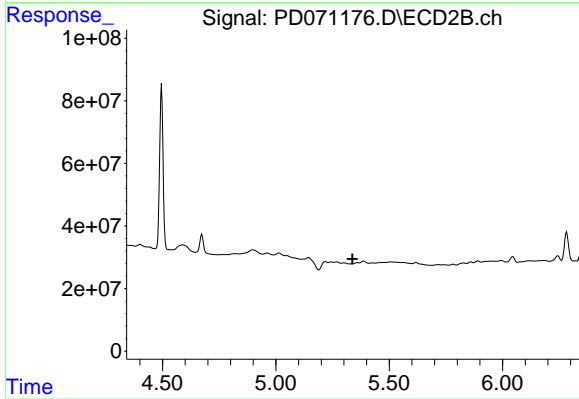
#3 gamma-BHC (Lindane)

R.T.: 4.813 min  
 Delta R.T.: -0.009 min  
 Response: 618539  
 Conc: N.D.



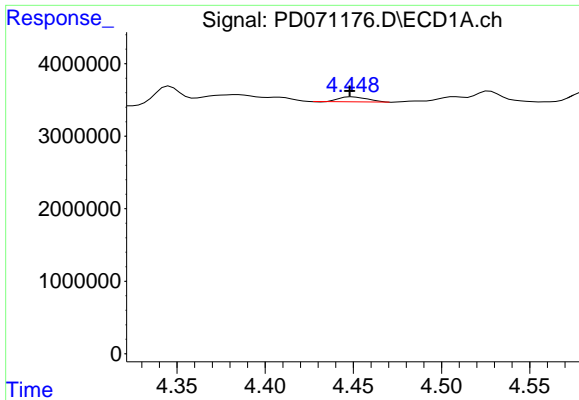
#4 Heptachlor

R.T.: 4.508 min  
 Delta R.T.: 0.009 min  
 Response: 599437  
 Conc: 0.17 ng/ml



#4 Heptachlor

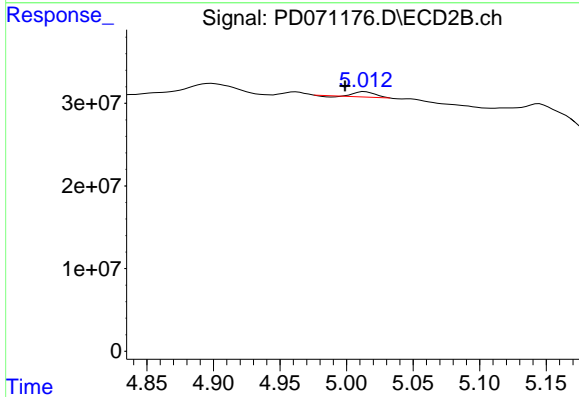
R.T.: 5.360 min  
 Delta R.T.: 0.021 min  
 Response: -4603787  
 Conc: N.D.



#6 beta-BHC

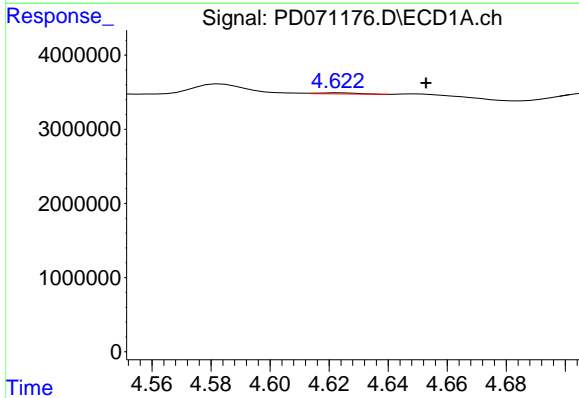
R.T.: 4.450 min  
 Delta R.T.: 0.001 min  
 Response: 765498  
 Conc: 0.49 ng/ml

Instrument :  
 ECD\_D  
 ClientSampleId :



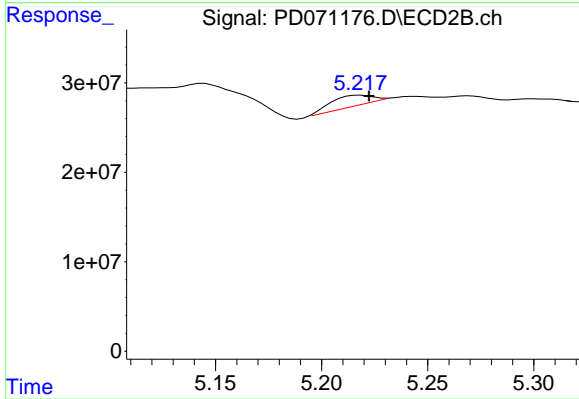
#6 beta-BHC

R.T.: 5.014 min  
 Delta R.T.: 0.015 min  
 Response: 6323889  
 Conc: 0.47 ng/ml



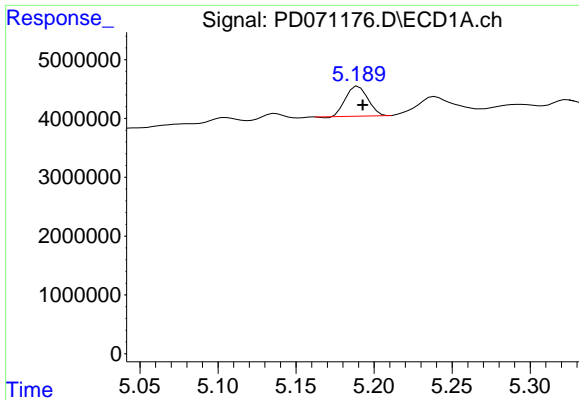
#7 delta-BHC

R.T.: 4.623 min  
 Delta R.T.: -0.030 min  
 Response: 137264  
 Conc: N.D.



#7 delta-BHC

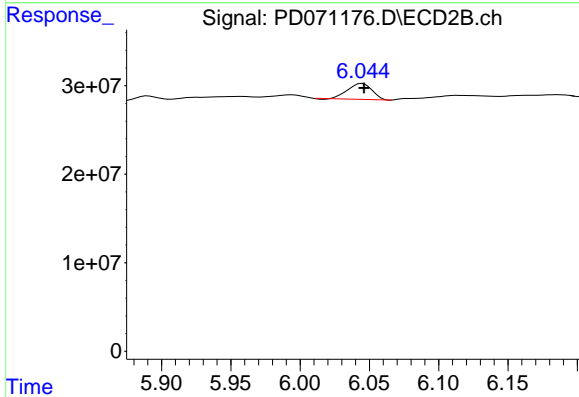
R.T.: 5.218 min  
 Delta R.T.: -0.004 min  
 Response: 15565744  
 Conc: 0.69 ng/ml



#8 Heptachlor epoxide

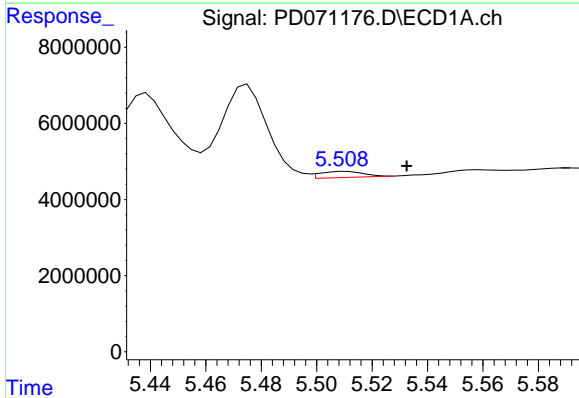
R.T.: 5.190 min  
 Delta R.T.: -0.003 min  
 Response: 5020671  
 Conc: 1.51 ng/ml

Instrument :  
 ECD\_D  
 ClientSampleId :



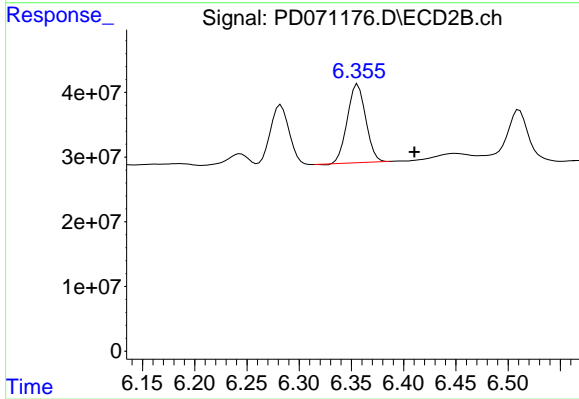
#8 Heptachlor epoxide

R.T.: 6.045 min  
 Delta R.T.: -0.001 min  
 Response: 22042533  
 Conc: 1.48 ng/ml



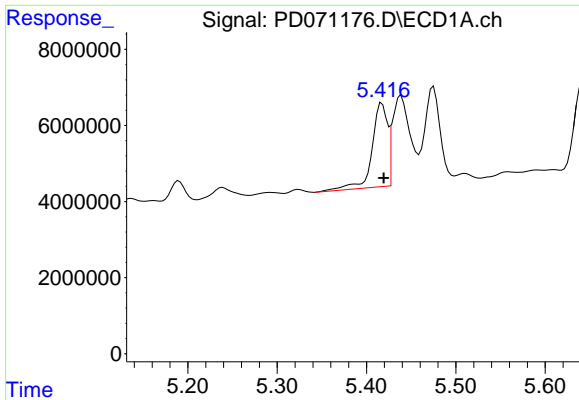
#9 Endosulfan I

R.T.: 5.511 min  
 Delta R.T.: -0.022 min  
 Response: 1709455  
 Conc: 0.57 ng/ml



#9 Endosulfan I

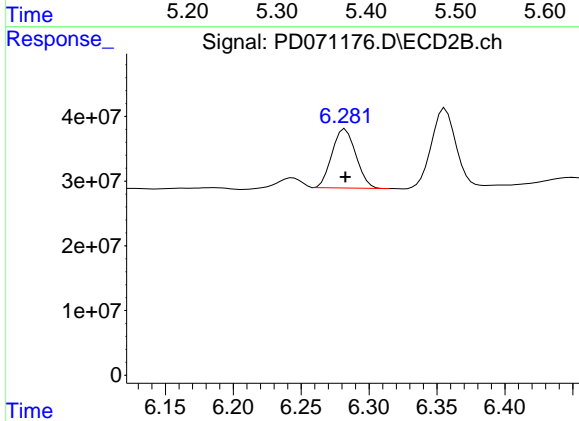
R.T.: 6.356 min  
 Delta R.T.: -0.054 min  
 Response: 148577636  
 Conc: 11.20 ng/ml



#10 trans-Chlordane

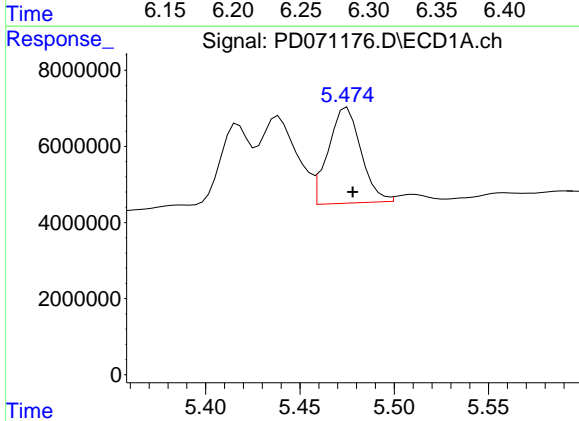
R.T.: 5.417 min  
 Delta R.T.: -0.002 min  
 Response: 26356445  
 Conc: 7.57 ng/ml

Instrument :  
 ECD\_D  
 ClientSampleId :



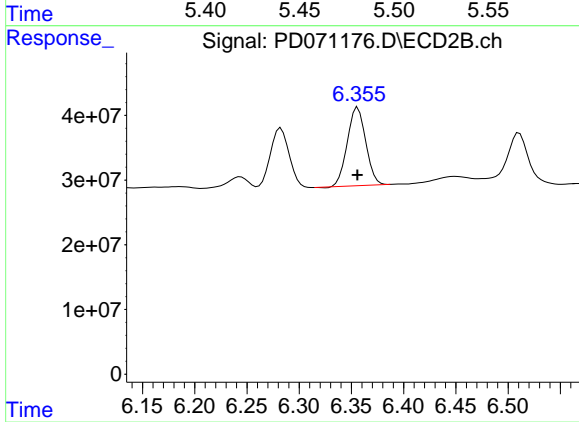
#10 trans-Chlordane

R.T.: 6.283 min  
 Delta R.T.: 0.000 min  
 Response: 111835640  
 Conc: 7.43 ng/ml



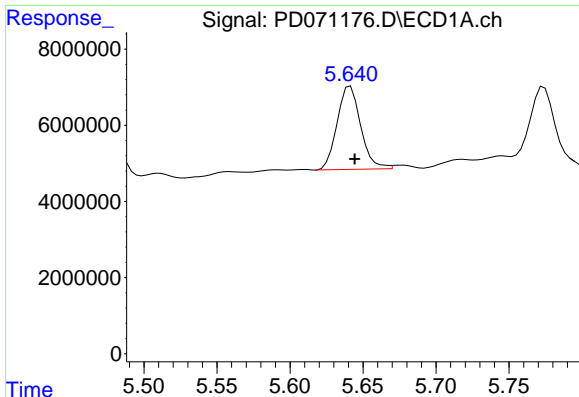
#11 cis-Chlordane

R.T.: 5.475 min  
 Delta R.T.: -0.003 min  
 Response: 30385790  
 Conc: 8.89 ng/ml



#11 cis-Chlordane

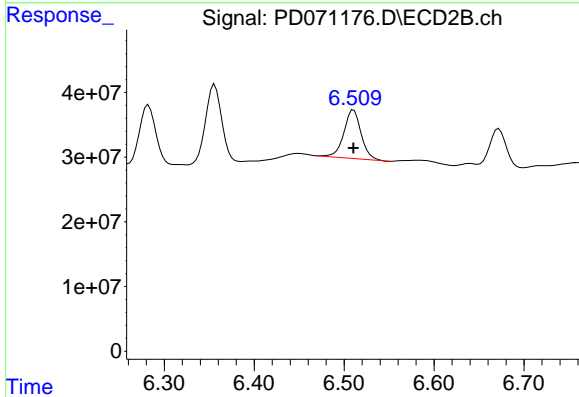
R.T.: 6.356 min  
 Delta R.T.: 0.000 min  
 Response: 148577636  
 Conc: 10.29 ng/ml



#12 4,4'-DDE

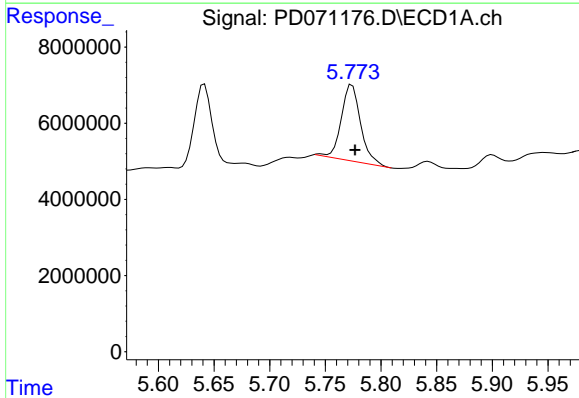
R.T.: 5.641 min  
 Delta R.T.: -0.003 min  
 Response: 24516795  
 Conc: 7.62 ng/ml

Instrument :  
 ECD\_D  
 ClientSampleId :



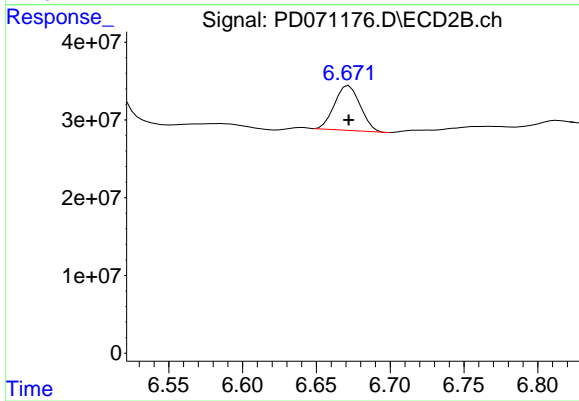
#12 4,4'-DDE

R.T.: 6.511 min  
 Delta R.T.: 0.000 min  
 Response: 100183308  
 Conc: 7.30 ng/ml



#13 Dieldrin

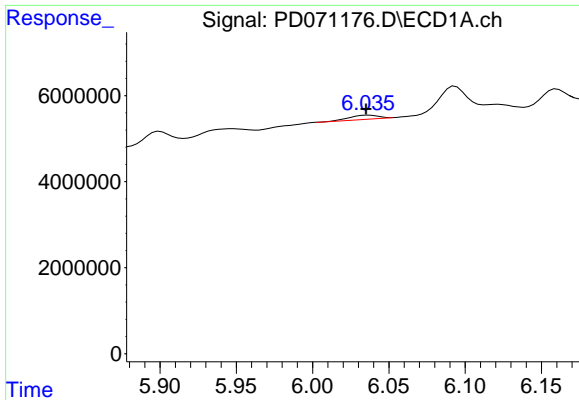
R.T.: 5.774 min  
 Delta R.T.: -0.003 min  
 Response: 23817701  
 Conc: 7.11 ng/ml



#13 Dieldrin

R.T.: 6.672 min  
 Delta R.T.: 0.000 min  
 Response: 69775040  
 Conc: 5.04 ng/ml

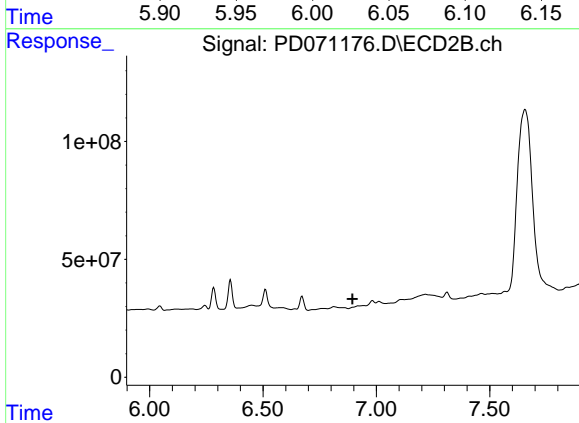




#14 Endrin

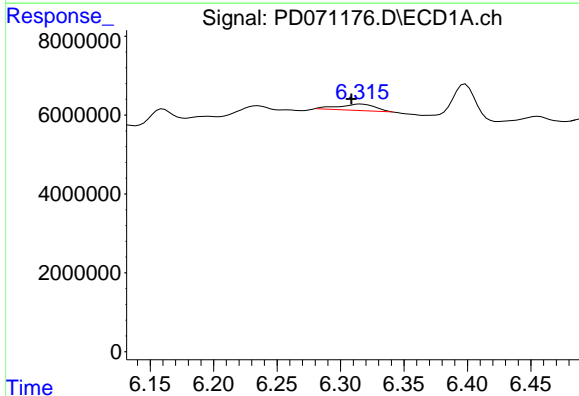
R.T.: 6.037 min  
 Delta R.T.: 0.002 min  
 Response: 1205775  
 Conc: 0.43 ng/ml

Instrument :  
 ECD\_D  
 ClientSampleId :



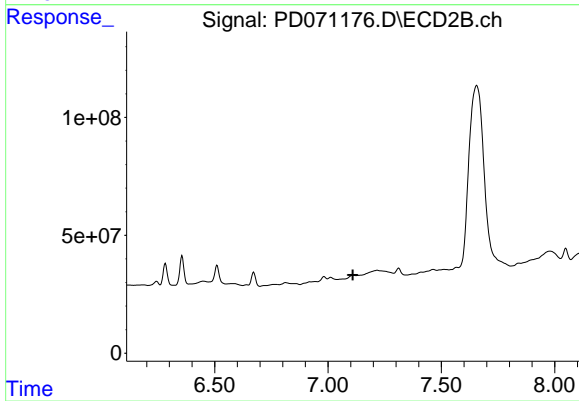
#14 Endrin

R.T.: 6.920 min  
 Delta R.T.: 0.025 min  
 Response: -5686743  
 Conc: N.D.



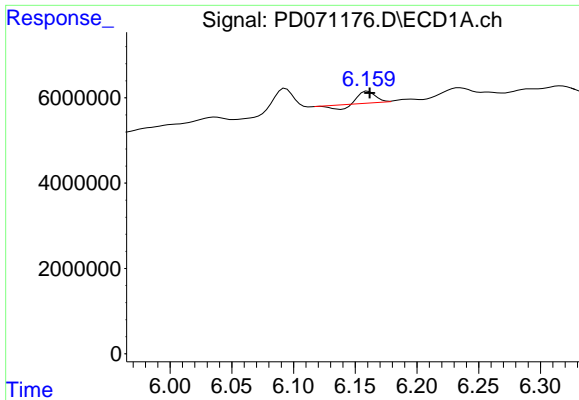
#15 Endosulfan II

R.T.: 6.317 min  
 Delta R.T.: 0.008 min  
 Response: 3118677  
 Conc: 1.14 ng/ml



#15 Endosulfan II

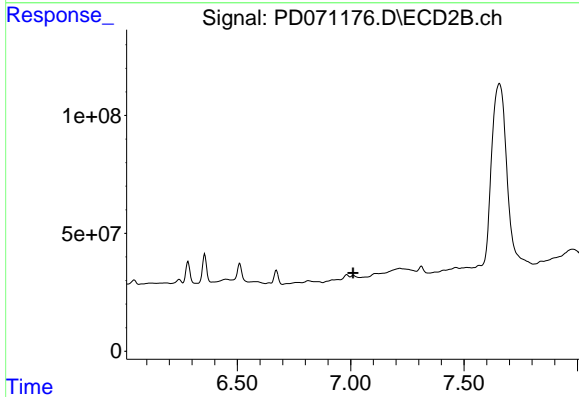
R.T.: 7.117 min  
 Delta R.T.: 0.008 min  
 Response: -3325961  
 Conc: N.D.



#16 4,4'-DDD

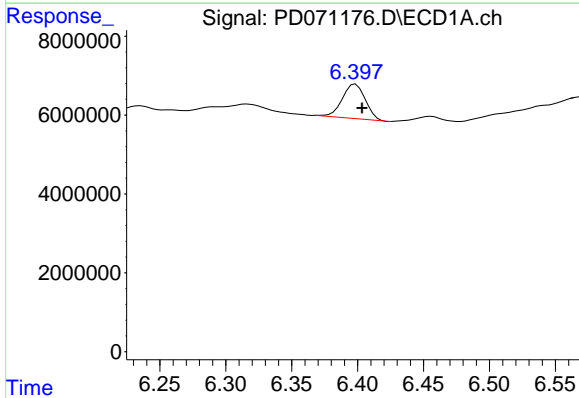
R.T.: 6.160 min  
 Delta R.T.: -0.002 min  
 Response: 1717796  
 Conc: 0.66 ng/ml

Instrument :  
 ECD\_D  
 ClientSampleId :



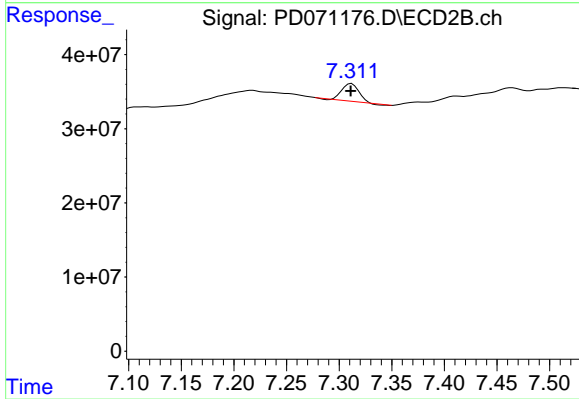
#16 4,4'-DDD

R.T.: 7.012 min  
 Delta R.T.: 0.002 min  
 Response: -794583  
 Conc: N.D.



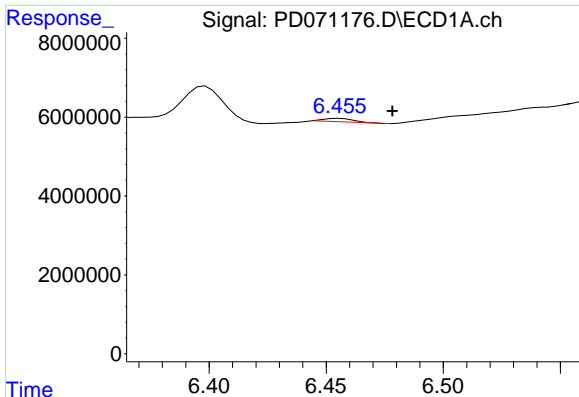
#17 4,4'-DDT

R.T.: 6.398 min  
 Delta R.T.: -0.005 min  
 Response: 10678934  
 Conc: 3.99 ng/ml



#17 4,4'-DDT

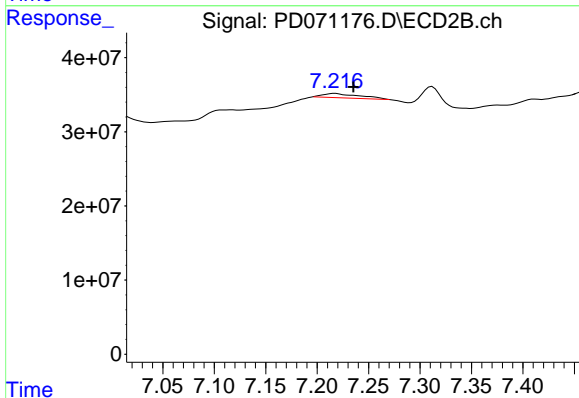
R.T.: 7.312 min  
 Delta R.T.: 0.000 min  
 Response: 26983877  
 Conc: 2.41 ng/ml



#18 Endrin aldehyde

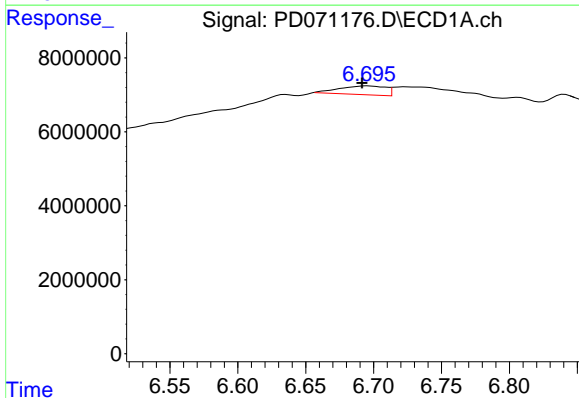
R.T.: 6.456 min  
 Delta R.T.: -0.023 min  
 Response: 734470  
 Conc: 0.32 ng/ml

Instrument :  
 ECD\_D  
 ClientSampleId :



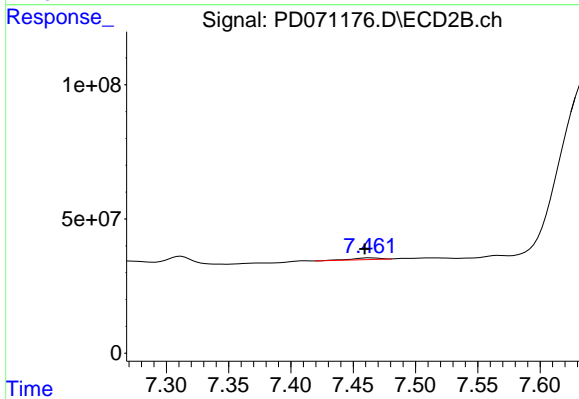
#18 Endrin aldehyde

R.T.: 7.218 min  
 Delta R.T.: -0.018 min  
 Response: 13969174  
 Conc: 1.44 ng/ml



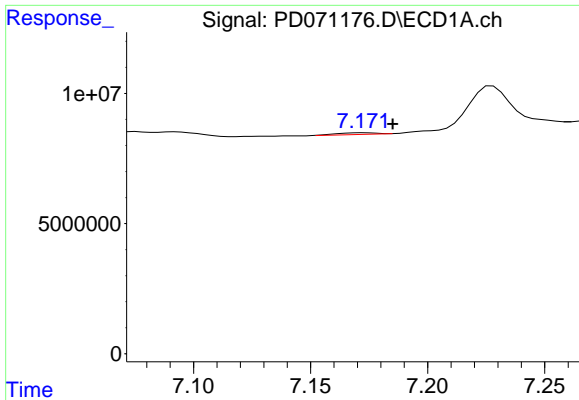
#19 Endosulfan Sulfate

R.T.: 6.696 min  
 Delta R.T.: 0.004 min  
 Response: 5592058  
 Conc: 2.00 ng/ml



#19 Endosulfan Sulfate

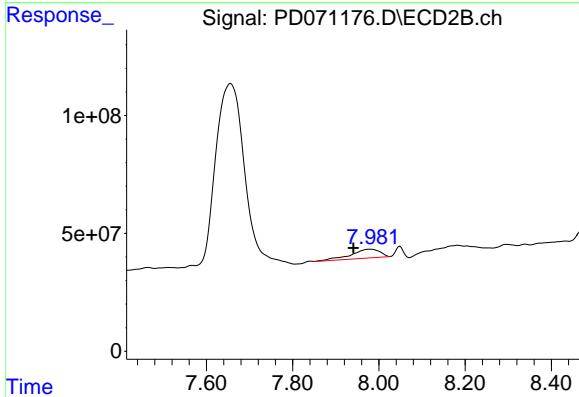
R.T.: 7.464 min  
 Delta R.T.: 0.005 min  
 Response: 9717340  
 Conc: 0.86 ng/ml



#21 Endrin ketone

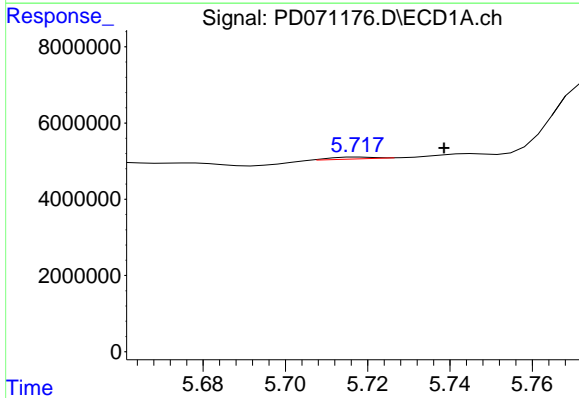
R.T.: 7.173 min  
 Delta R.T.: -0.012 min  
 Response: 742361  
 Conc: 0.24 ng/ml

Instrument :  
 ECD\_D  
 ClientSampleId :



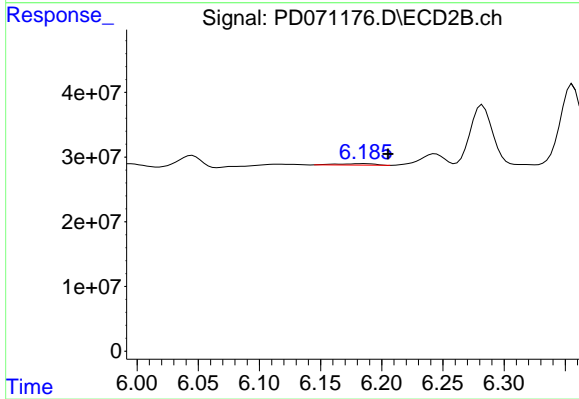
#21 Endrin ketone

R.T.: 7.981 min  
 Delta R.T.: 0.040 min  
 Response: 173177594  
 Conc: 14.02 ng/ml



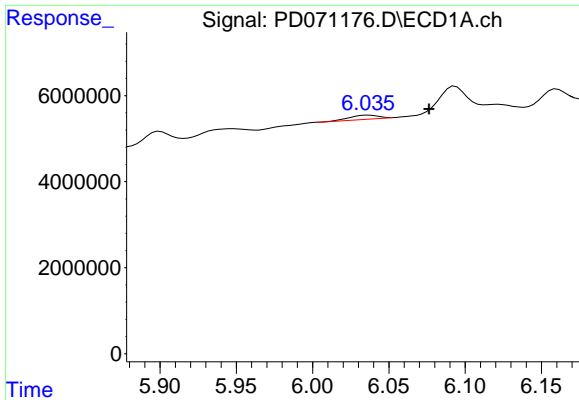
#22 Toxaphene-1

R.T.: 5.718 min  
 Delta R.T.: -0.020 min  
 Response: 321736  
 Conc: 20.77 ng/ml



#22 Toxaphene-1

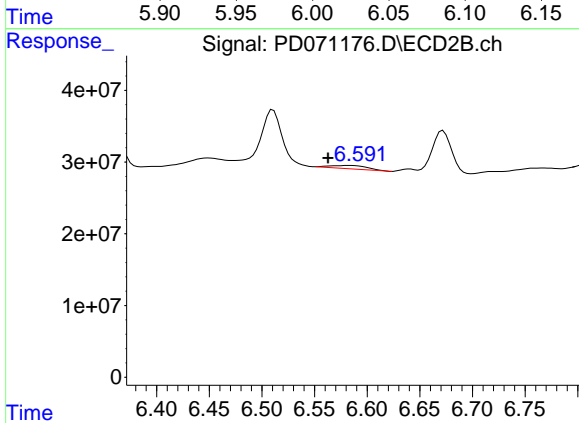
R.T.: 6.186 min  
 Delta R.T.: -0.019 min  
 Response: 5000218  
 Conc: 118.76 ng/ml



#23 Toxaphene-2

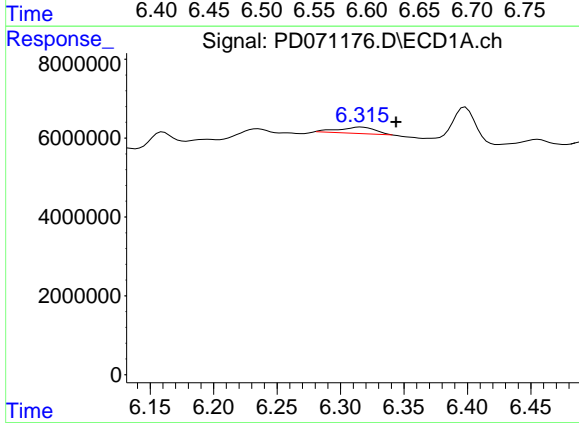
R.T.: 6.037 min  
 Delta R.T.: -0.039 min  
 Response: 1205775  
 Conc: 78.50 ng/ml

Instrument :  
 ECD\_D  
 ClientSampleId :



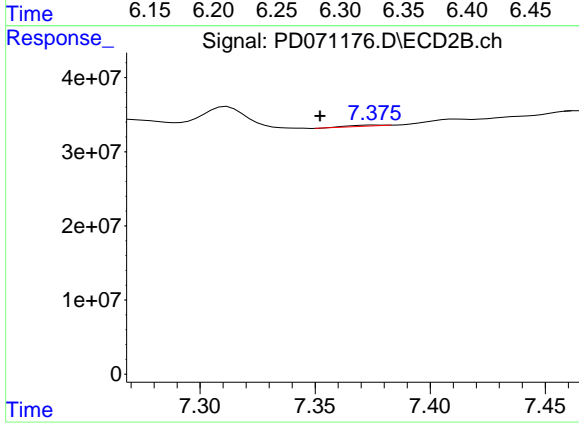
#23 Toxaphene-2

R.T.: 6.583 min  
 Delta R.T.: 0.021 min  
 Response: 11336238  
 Conc: 119.25 ng/ml



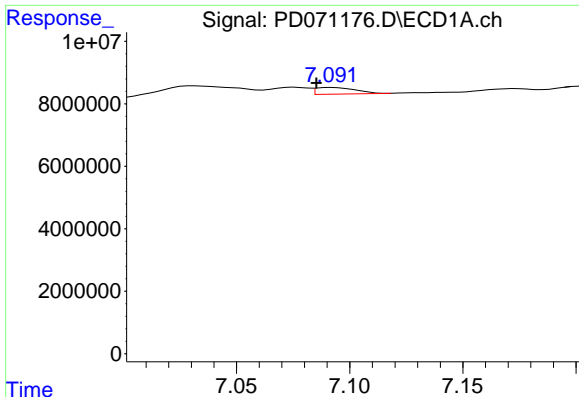
#24 Toxaphene-3

R.T.: 6.317 min  
 Delta R.T.: -0.027 min  
 Response: 3118677  
 Conc: 186.70 ng/ml



#24 Toxaphene-3

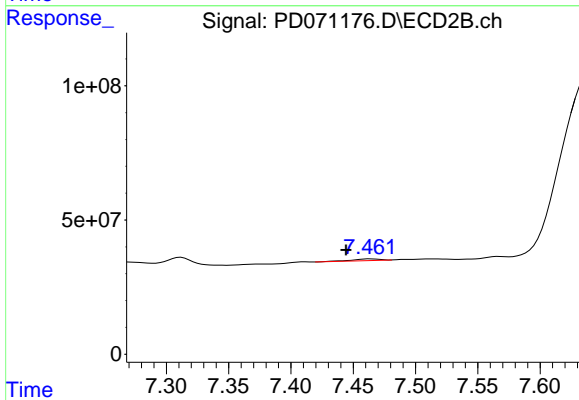
R.T.: 7.376 min  
 Delta R.T.: 0.024 min  
 Response: 1361412  
 Conc: 5.15 ng/ml



#25 Toxaphene-4

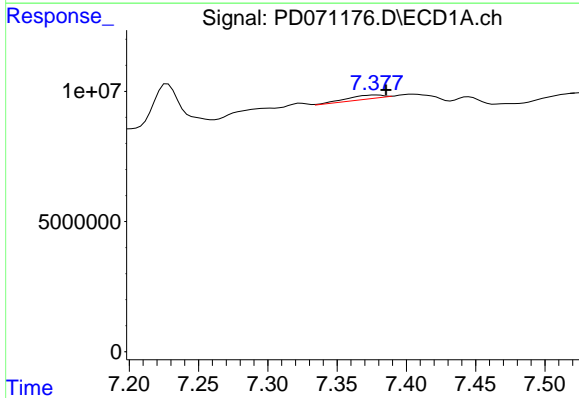
R.T.: 7.092 min  
 Delta R.T.: 0.007 min  
 Response: 2635725  
 Conc: 37.58 ng/ml

Instrument :  
 ECD\_D  
 ClientSampleId :



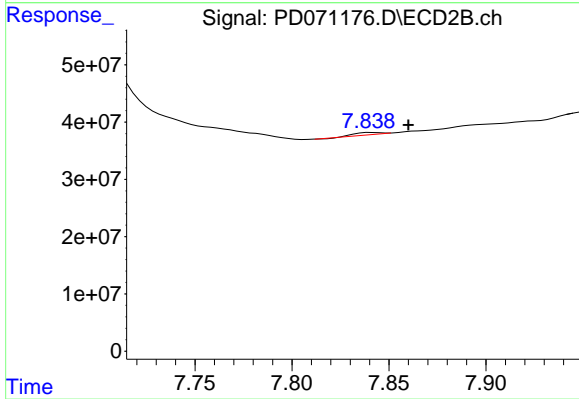
#25 Toxaphene-4

R.T.: 7.464 min  
 Delta R.T.: 0.020 min  
 Response: 9717340  
 Conc: 45.95 ng/ml



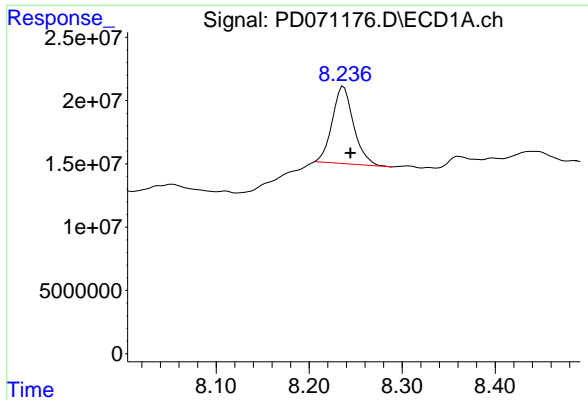
#26 Toxaphene-5

R.T.: 7.378 min  
 Delta R.T.: -0.007 min  
 Response: 2558310  
 Conc: 70.14 ng/ml



#26 Toxaphene-5

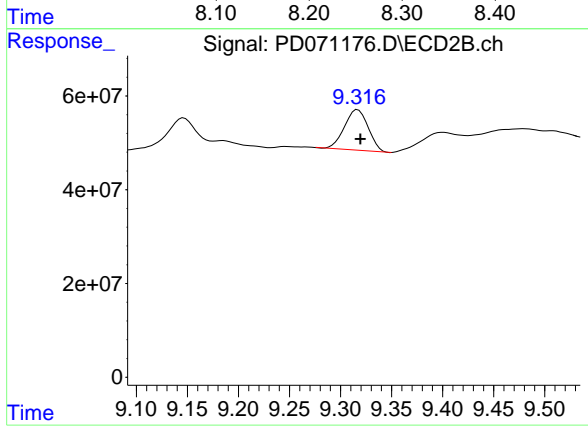
R.T.: 7.842 min  
 Delta R.T.: -0.019 min  
 Response: 3092437  
 Conc: 25.13 ng/ml



#27 Decachlorobiphenyl

R.T.: 8.237 min  
Delta R.T.: -0.007 min  
Response: 96557392  
Conc: 38.03 ng/ml

Instrument :  
ECD\_D  
ClientSampleId :



#27 Decachlorobiphenyl

R.T.: 9.317 min  
Delta R.T.: -0.002 min  
Response: 139909407  
Conc: 15.15 ng/ml