

Data Path : Z:\pestpcbsrv\HPCHEM1\ECD_D\Data\PD072722\
 Data File : PD071182.D
 Signal(s) : Signal #1: ECD1A.ch Signal #2: ECD2B.ch
 Acq On : 26 Jul 2022 16:46
 Operator : AR\AJ
 Sample : INDB308
 Misc :
 ALS Vial : 16 Sample Multiplier: 1

Instrument :
 ECD_D
 ClientSampleId :

Integration File signal 1: autoint1.e
 Integration File signal 2: autoint2.e
 Quant Time: Jul 27 03:25:06 2022
 Quant Method : Z:\pestpcbsrv\HPCHEM1\ECD_D\Method\PD071422CLP.M
 Quant Title : GC Extractables
 QLast Update : Thu Jul 14 05:14:58 2022
 Response via : Initial Calibration
 Integrator: ChemStation

Volume Inj. : 1 µl
 Signal #1 Phase : ZB-MR2 Signal #2 Phase: ZB-MR1
 Signal #1 Info : 30M x 0.32mm x0.2 Signal #2 Info : 30M x 0.32mm x 0.50µm

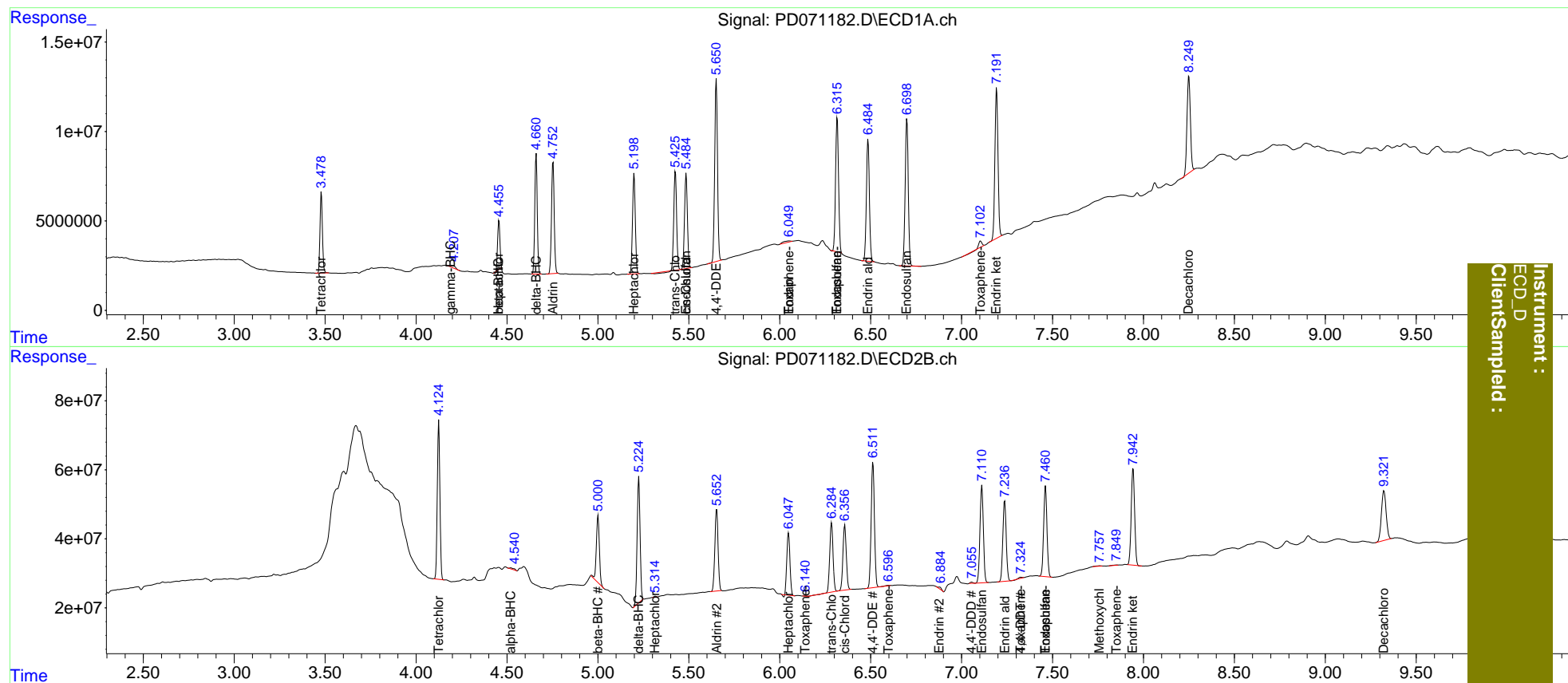
Compound	RT#1	RT#2	Resp#1	Resp#2	ng/ml	ng/ml
System Monitoring Compounds						
1) SA Tetrachlo...	3.480	4.125	41502600	455.6E6	17.249	19.413
27) SA Decachlor...	8.250	9.323	69416588	259.6E6	27.342	28.109
Target Compounds						
2) A alpha-BHC	0.000	4.521	0	6884601	N.D.	0.228
3) MA gamma-BHC...	4.193	4.801	2378285	86277	0.653	<MDL #
4) MA Heptachlor	4.456f	5.316	24371867	2308588	6.995	0.115 #
5) MB Aldrin	4.754	5.653	64254520	292.8E6	17.781	16.823
6) B beta-BHC	4.456	5.001	24371867	219.7E6	15.556	16.430
7) B delta-BHC	4.661	5.225	63311604	411.2E6	18.174	18.131
8) B Heptachlo...	5.199	6.048	59377238	214.9E6	17.833	14.472
9) A Endosulfan I	5.486f	6.439	58305781	-175247	19.342	N.D. #
10) B trans-Chl...	5.426	6.285	57228948	253.8E6	16.444	16.853
11) B cis-Chlor...	5.486	6.358	58305781	241.6E6	17.060	16.730
12) B 4,4'-DDE	5.651	6.513	109.2E6	456.0E6	33.934	33.245
13) MA Dieldrin	0.000	6.661	0	926779	N.D.	<MDL
14) MA Endrin	6.051	6.879	2244720	7630391	0.810	0.731
15) B Endosulfa...	6.316	7.112	84868605	365.0E6	30.946	31.688
16) A 4,4'-DDD	0.000	7.056f	0	3418370	N.D.	0.313
17) MA 4,4'-DDT	0.000	7.325	0	2737882	N.D.	0.245
18) B Endrin al...	6.486	7.237	77769656	303.5E6	33.950	31.221
19) B Endosulfa...	6.699	7.461	97045416	335.5E6	34.644	29.593
20) A Methoxychlor	0.000	7.760	0	2282832	N.D.	0.436
21) B Endrin ke...	7.193	7.943	98532253	366.8E6	31.785	29.703
22) Toxaphene-1	0.000	6.141f	0	655876	N.D.	15.578
23) Toxaphene-2	6.051	6.597	2244720	1993834	146.130	20.973 #
24) Toxaphene-3	6.316	7.325	84868605	2737882	5080.626	10.354 #
25) Toxaphene-4	7.104	7.461	2963244	335.5E6	42.245	1586.387 #

(f)=RT Delta > 1/2 Window (#)=Amounts differ by > 25% (m)=manual int.

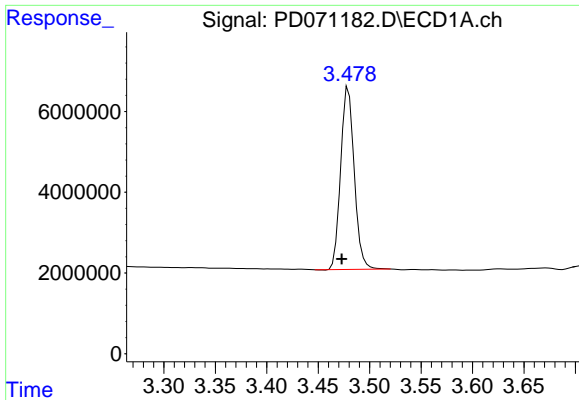
Data Path : Z:\pestpcbsrv\HPCHEM1\ECD_D\Data\PD072722\
 Data File : PD071182.D
 Signal(s) : Signal #1: ECD1A.ch Signal #2: ECD2B.ch
 Acq On : 26 Jul 2022 16:46
 Operator : AR\AJ
 Sample : INDB308
 Misc :
 ALS Vial : 16 Sample Multiplier: 1

Integration File signal 1: autoint1.e
 Integration File signal 2: autoint2.e
 Quant Time: Jul 27 03:25:06 2022
 Quant Method : Z:\pestpcbsrv\HPCHEM1\ECD_D\Method\PD071422CLP.M
 Quant Title : GC Extractables
 QLast Update : Thu Jul 14 05:14:58 2022
 Response via : Initial Calibration
 Integrator: ChemStation

Volume Inj. : 1 µl
 Signal #1 Phase : ZB-MR2 Signal #2 Phase: ZB-MR1
 Signal #1 Info : 30M x 0.32mm x0.2 Signal #2 Info : 30M x 0.32mm x 0.50µm



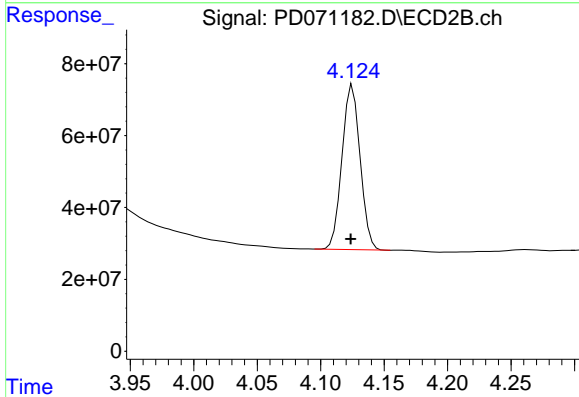
Instrument :
 ECD_D
 ClientSampled :



#1 Tetrachloro-m-xylene

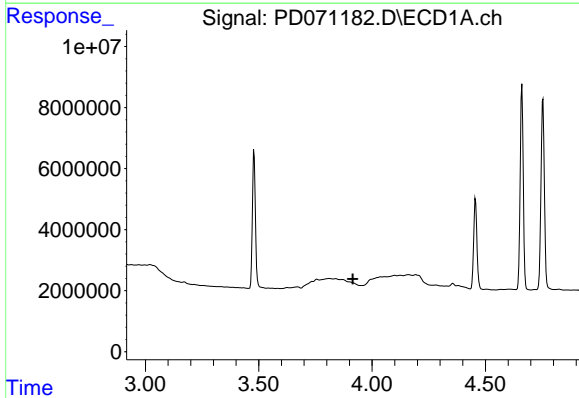
R.T.: 3.480 min
 Delta R.T.: 0.007 min
 Response: 41502600
 Conc: 17.25 ng/ml

Instrument :
 ECD_D
 ClientSampleId :



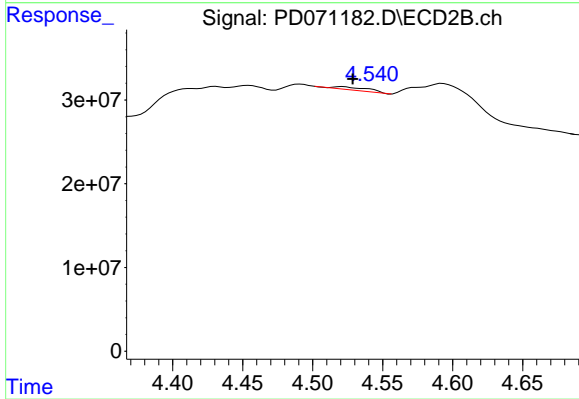
#1 Tetrachloro-m-xylene

R.T.: 4.125 min
 Delta R.T.: 0.002 min
 Response: 455599288
 Conc: 19.41 ng/ml



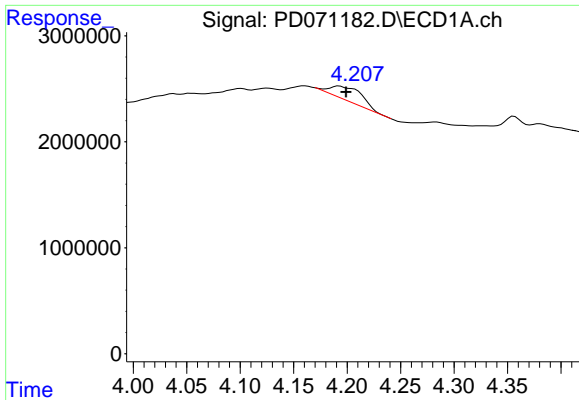
#2 alpha-BHC

R.T.: 0.000 min
 Exp R.T. : 3.915 min
 Response: 0
 Conc: N.D.



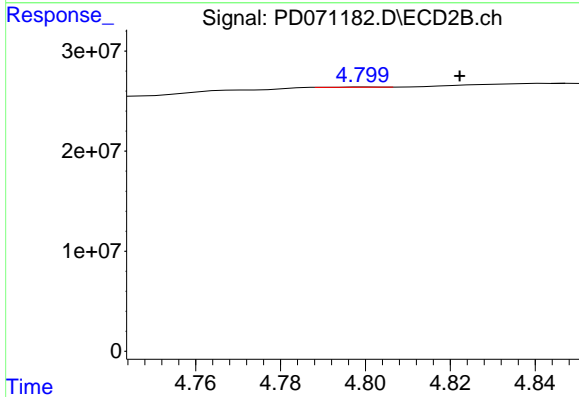
#2 alpha-BHC

R.T.: 4.521 min
 Delta R.T.: -0.007 min
 Response: 6884601
 Conc: 0.23 ng/ml

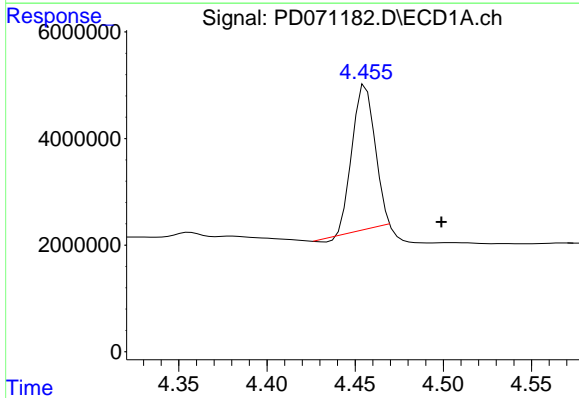


#3 gamma-BHC (Lindane)
 R.T.: 4.193 min
 Delta R.T.: -0.006 min
 Response: 2378285
 Conc: 0.65 ng/ml

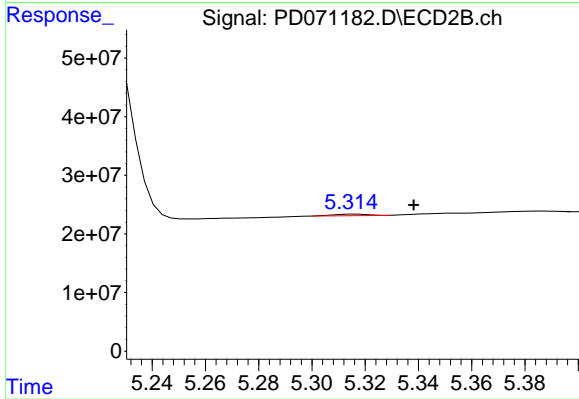
Instrument :
 ECD_D
 ClientSampleId :



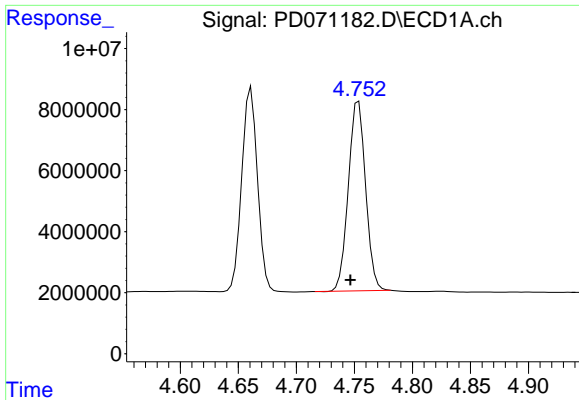
#3 gamma-BHC (Lindane)
 R.T.: 4.801 min
 Delta R.T.: -0.022 min
 Response: 86277
 Conc: N.D.



#4 Heptachlor
 R.T.: 4.456 min
 Delta R.T.: -0.043 min
 Response: 24371867
 Conc: 6.99 ng/ml



#4 Heptachlor
 R.T.: 5.316 min
 Delta R.T.: -0.022 min
 Response: 2308588
 Conc: 0.12 ng/ml



#5 Aldrin

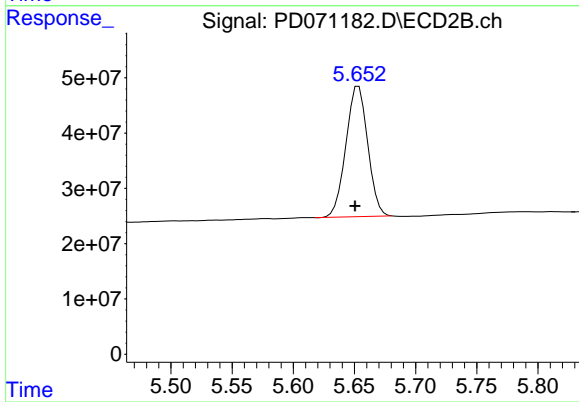
R.T.: 4.754 min

Delta R.T.: 0.007 min

Response: 64254520

Conc: 17.78 ng/ml

Instrument :
ECD_D
ClientSampleId :



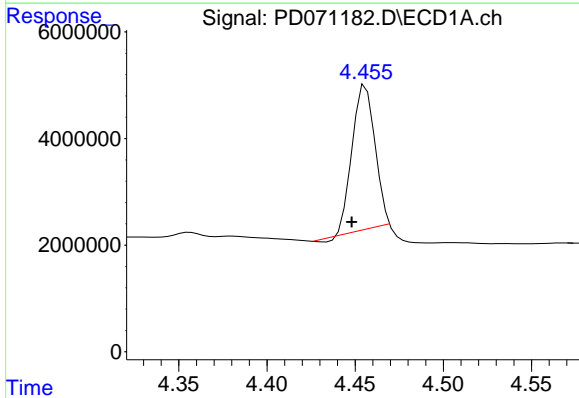
#5 Aldrin

R.T.: 5.653 min

Delta R.T.: 0.003 min

Response: 292777723

Conc: 16.82 ng/ml



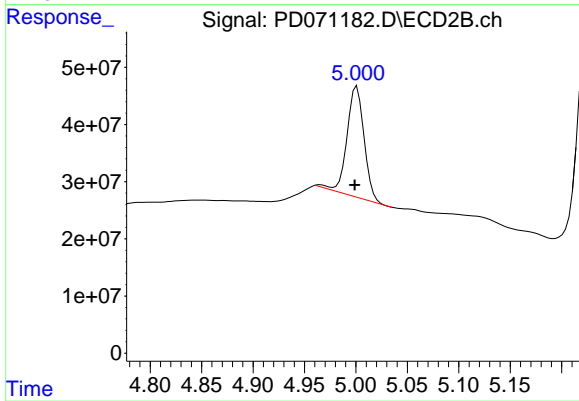
#6 beta-BHC

R.T.: 4.456 min

Delta R.T.: 0.008 min

Response: 24371867

Conc: 15.56 ng/ml



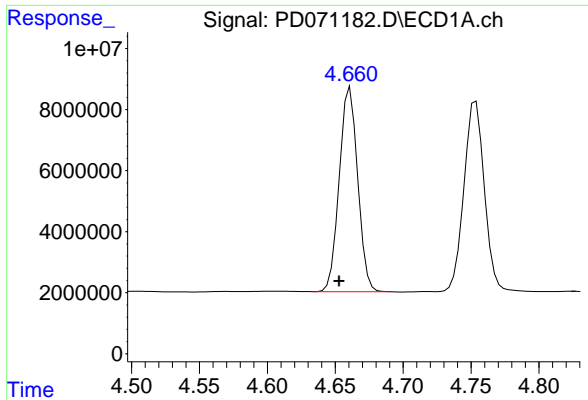
#6 beta-BHC

R.T.: 5.001 min

Delta R.T.: 0.002 min

Response: 219729698

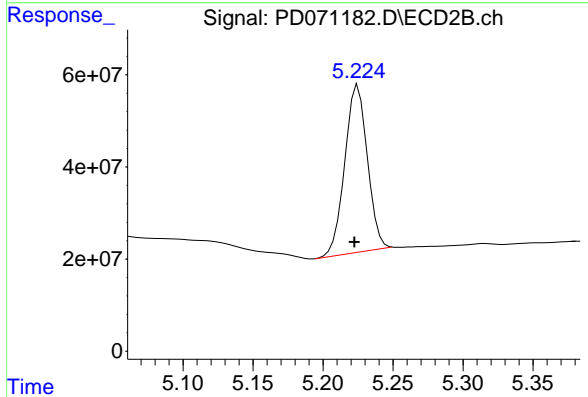
Conc: 16.43 ng/ml



#7 delta-BHC

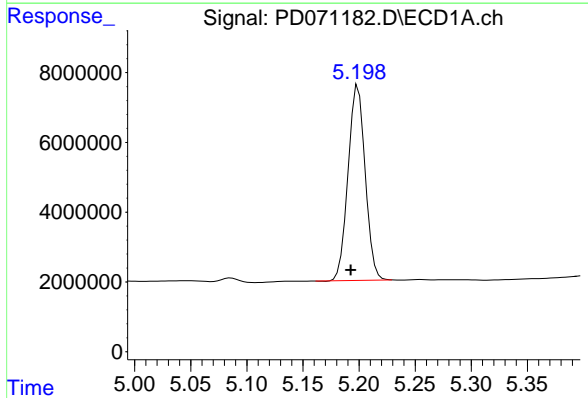
R.T.: 4.661 min
 Delta R.T.: 0.008 min
 Response: 63311604
 Conc: 18.17 ng/ml

Instrument :
 ECD_D
 ClientSampleId :



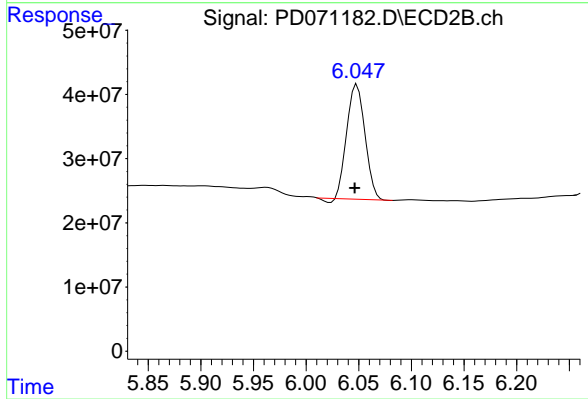
#7 delta-BHC

R.T.: 5.225 min
 Delta R.T.: 0.003 min
 Response: 411234670
 Conc: 18.13 ng/ml



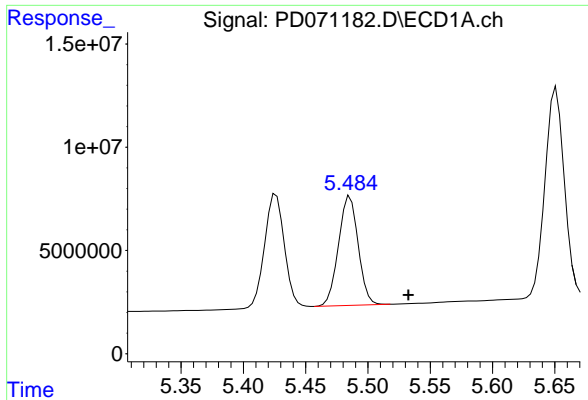
#8 Heptachlor epoxide

R.T.: 5.199 min
 Delta R.T.: 0.006 min
 Response: 59377238
 Conc: 17.83 ng/ml



#8 Heptachlor epoxide

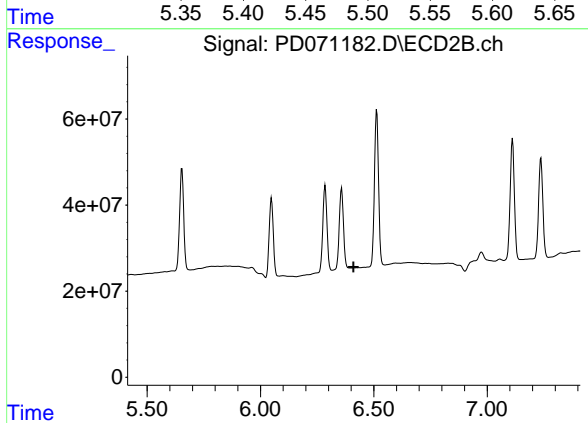
R.T.: 6.048 min
 Delta R.T.: 0.002 min
 Response: 214915884
 Conc: 14.47 ng/ml



#9 Endosulfan I

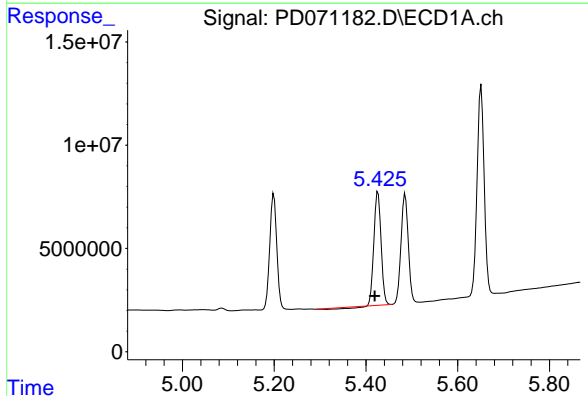
R.T.: 5.486 min
 Delta R.T.: -0.047 min
 Response: 58305781
 Conc: 19.34 ng/ml

Instrument :
 ECD_D
 ClientSampleId :



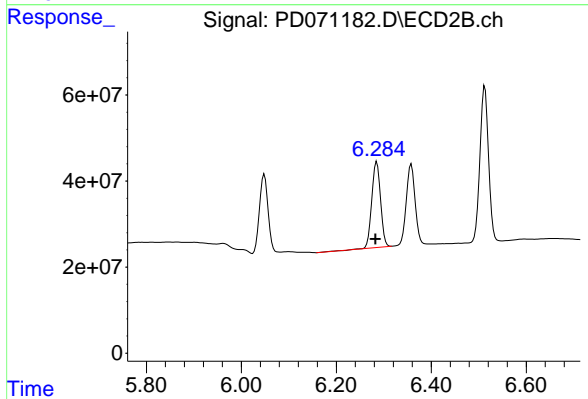
#9 Endosulfan I

R.T.: 6.439 min
 Delta R.T.: 0.029 min
 Response: -175247
 Conc: N.D.



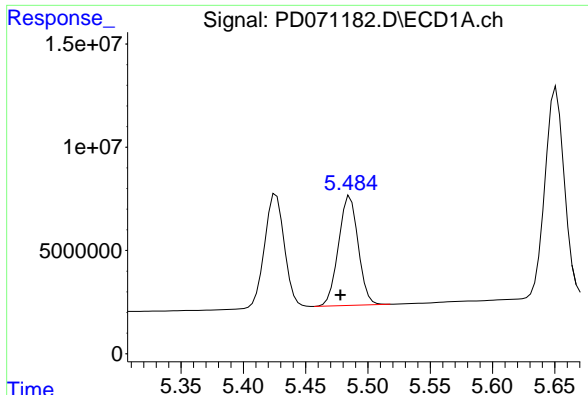
#10 trans-Chlordane

R.T.: 5.426 min
 Delta R.T.: 0.007 min
 Response: 57228948
 Conc: 16.44 ng/ml



#10 trans-Chlordane

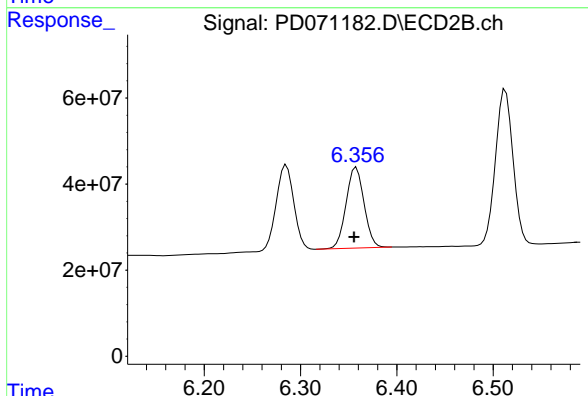
R.T.: 6.285 min
 Delta R.T.: 0.003 min
 Response: 253761140
 Conc: 16.85 ng/ml



#11 cis-Chlordane

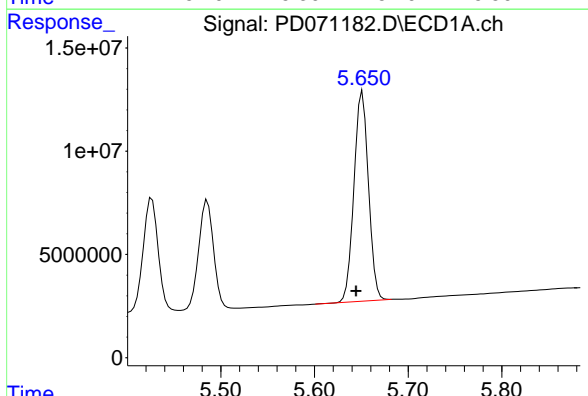
R.T.: 5.486 min
 Delta R.T.: 0.008 min
 Response: 58305781
 Conc: 17.06 ng/ml

Instrument :
 ECD_D
 ClientSampleId :



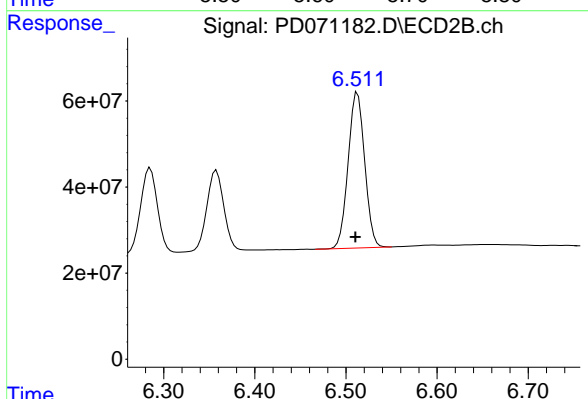
#11 cis-Chlordane

R.T.: 6.358 min
 Delta R.T.: 0.002 min
 Response: 241642257
 Conc: 16.73 ng/ml



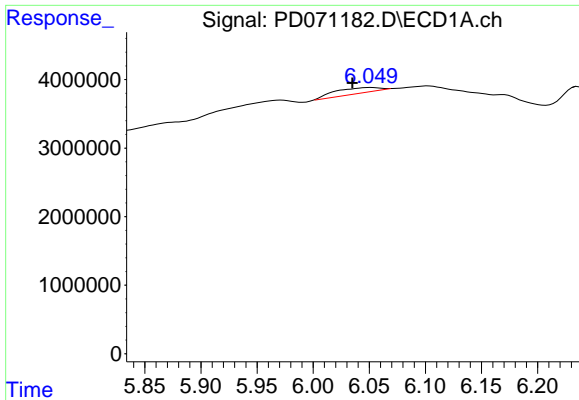
#12 4,4'-DDE

R.T.: 5.651 min
 Delta R.T.: 0.007 min
 Response: 109184135
 Conc: 33.93 ng/ml



#12 4,4'-DDE

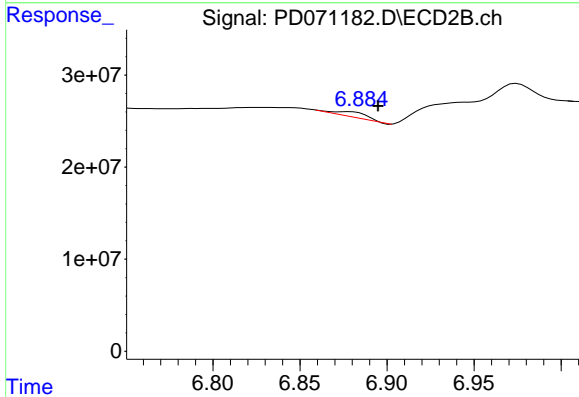
R.T.: 6.513 min
 Delta R.T.: 0.002 min
 Response: 455971912
 Conc: 33.24 ng/ml



#14 Endrin

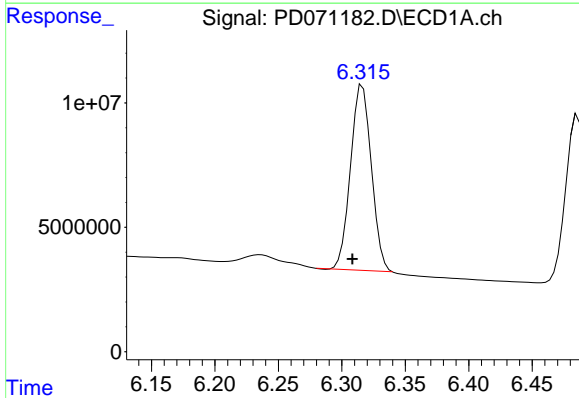
R.T.: 6.051 min
 Delta R.T.: 0.016 min
 Response: 2244720
 Conc: 0.81 ng/ml

Instrument :
 ECD_D
 ClientSampleId :



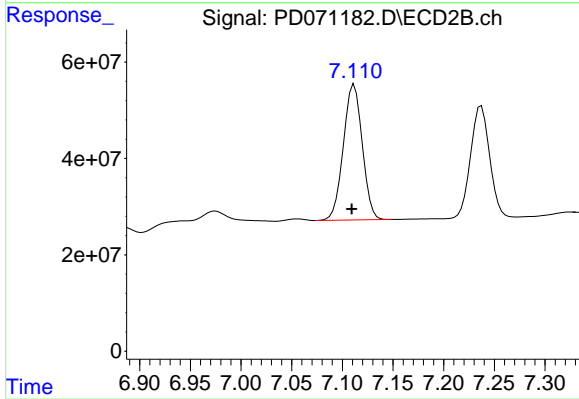
#14 Endrin

R.T.: 6.879 min
 Delta R.T.: -0.016 min
 Response: 7630391
 Conc: 0.73 ng/ml



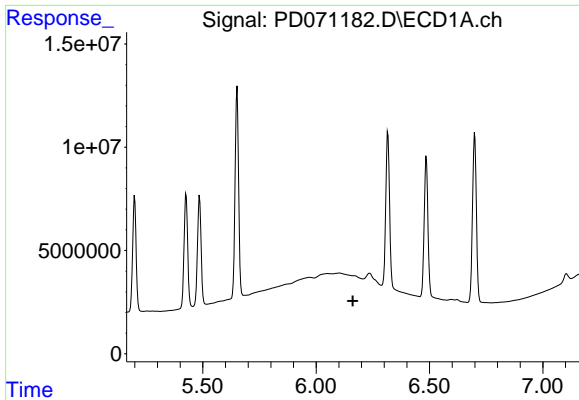
#15 Endosulfan II

R.T.: 6.316 min
 Delta R.T.: 0.008 min
 Response: 84868605
 Conc: 30.95 ng/ml



#15 Endosulfan II

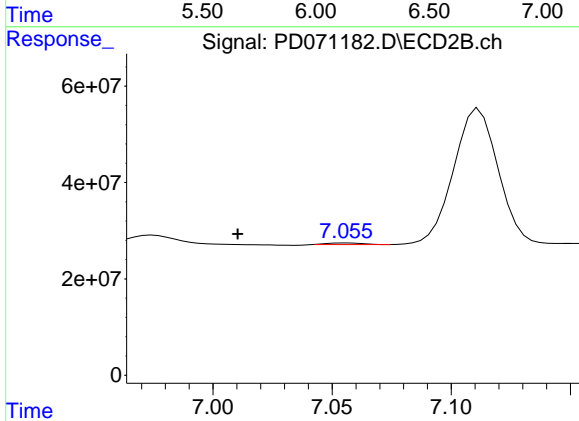
R.T.: 7.112 min
 Delta R.T.: 0.003 min
 Response: 364985267
 Conc: 31.69 ng/ml



#16 4,4'-DDD

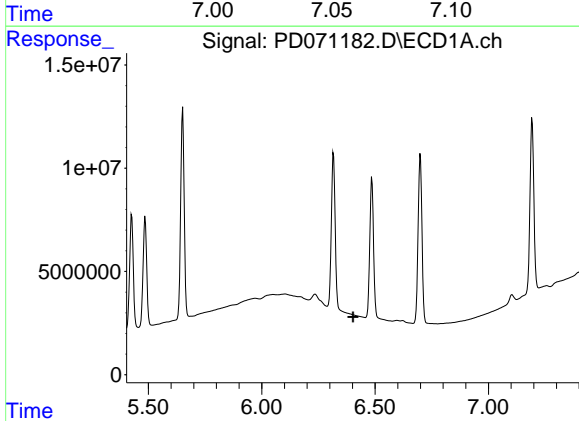
R.T.: 0.000 min
 Exp R.T.: 6.162 min
 Response: 0
 Conc: N.D.

Instrument :
 ECD_D
 ClientSampleId :



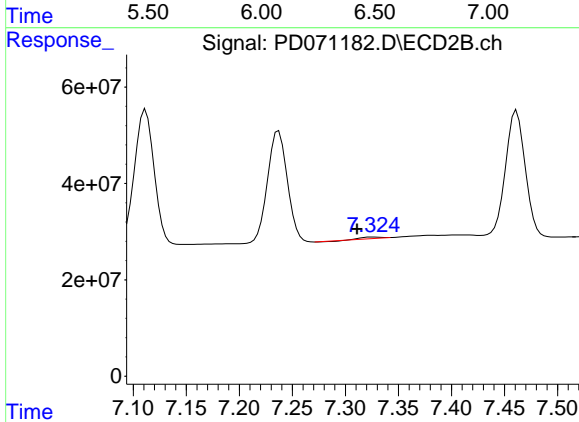
#16 4,4'-DDD

R.T.: 7.056 min
 Delta R.T.: 0.046 min
 Response: 3418370
 Conc: 0.31 ng/ml



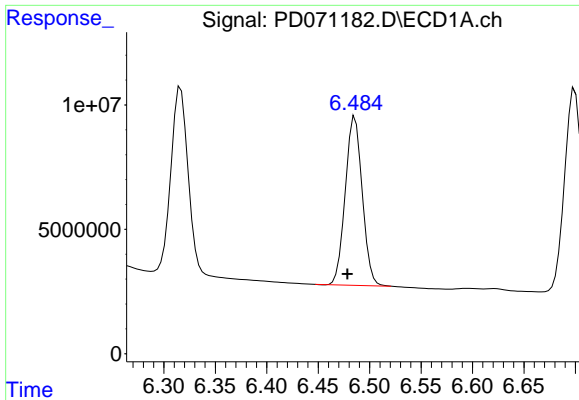
#17 4,4'-DDT

R.T.: 0.000 min
 Exp R.T.: 6.403 min
 Response: 0
 Conc: N.D.



#17 4,4'-DDT

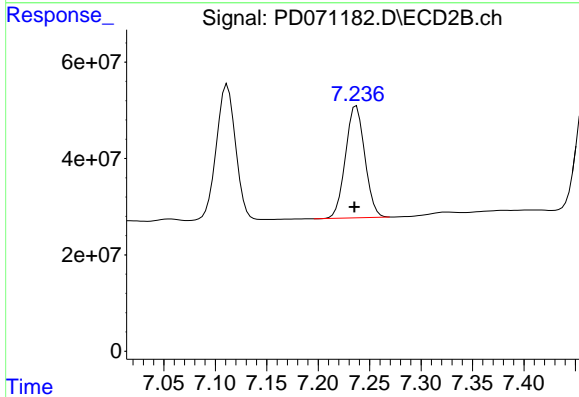
R.T.: 7.325 min
 Delta R.T.: 0.014 min
 Response: 2737882
 Conc: 0.24 ng/ml



#18 Endrin aldehyde

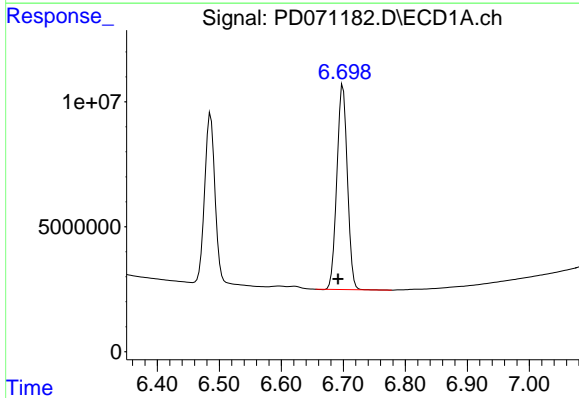
R.T.: 6.486 min
 Delta R.T.: 0.008 min
 Response: 77769656
 Conc: 33.95 ng/ml

Instrument :
 ECD_D
 ClientSampleId :



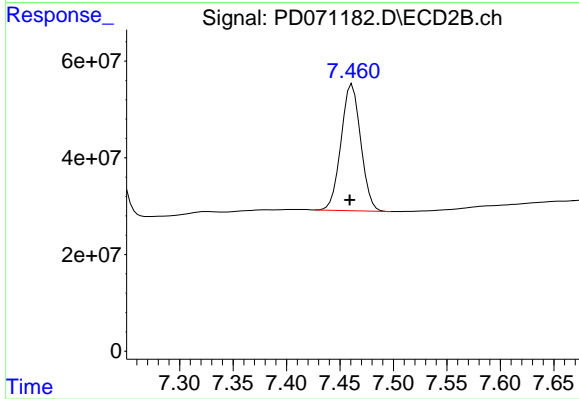
#18 Endrin aldehyde

R.T.: 7.237 min
 Delta R.T.: 0.002 min
 Response: 303546000
 Conc: 31.22 ng/ml



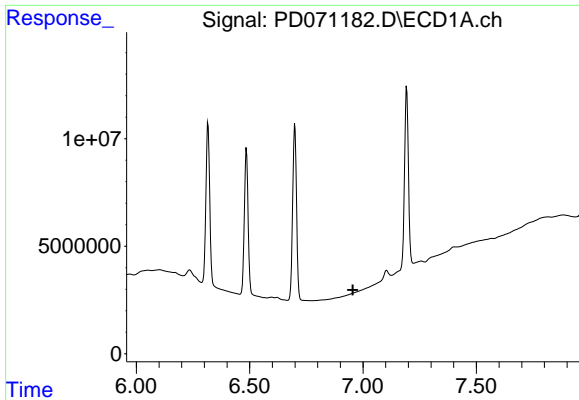
#19 Endosulfan Sulfate

R.T.: 6.699 min
 Delta R.T.: 0.008 min
 Response: 97045416
 Conc: 34.64 ng/ml



#19 Endosulfan Sulfate

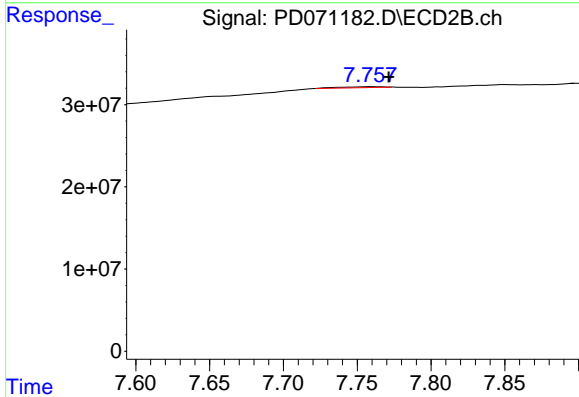
R.T.: 7.461 min
 Delta R.T.: 0.002 min
 Response: 335498976
 Conc: 29.59 ng/ml



#20 Methoxychlor

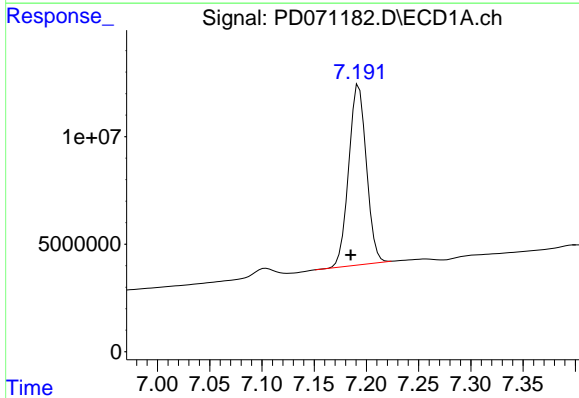
R.T.: 0.000 min
 Exp R.T.: 6.954 min
 Response: 0
 Conc: N.D.

Instrument :
 ECD_D
 ClientSampleId :



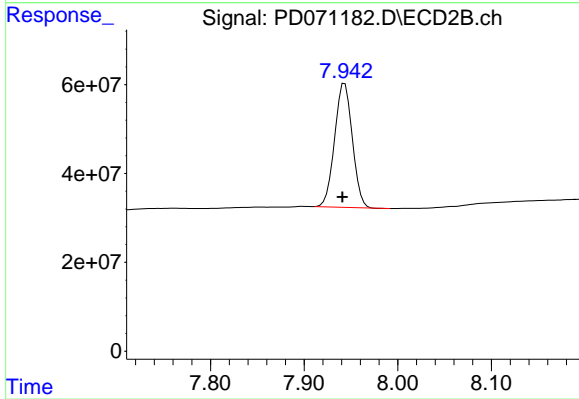
#20 Methoxychlor

R.T.: 7.760 min
 Delta R.T.: -0.011 min
 Response: 2282832
 Conc: 0.44 ng/ml



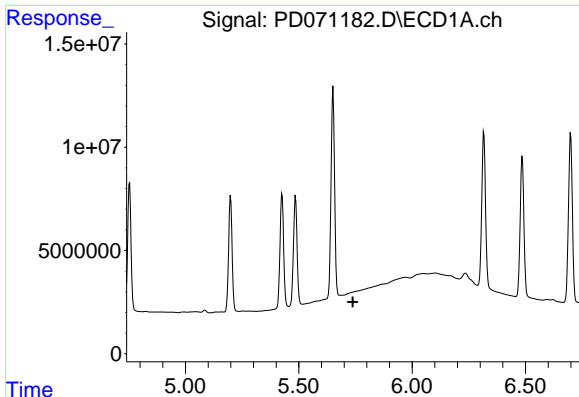
#21 Endrin ketone

R.T.: 7.193 min
 Delta R.T.: 0.008 min
 Response: 98532253
 Conc: 31.79 ng/ml



#21 Endrin ketone

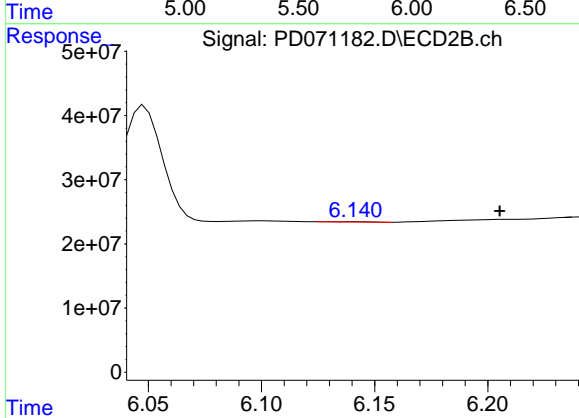
R.T.: 7.943 min
 Delta R.T.: 0.002 min
 Response: 366776605
 Conc: 29.70 ng/ml



#22 Toxaphene-1

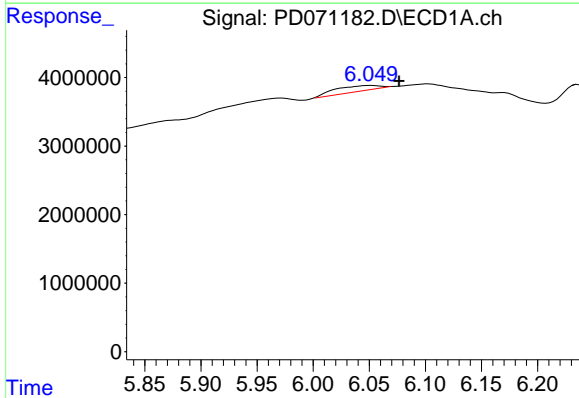
R.T.: 0.000 min
 Exp R.T.: 5.739 min
 Response: 0
 Conc: N.D.

Instrument :
 ECD_D
 ClientSampleId :



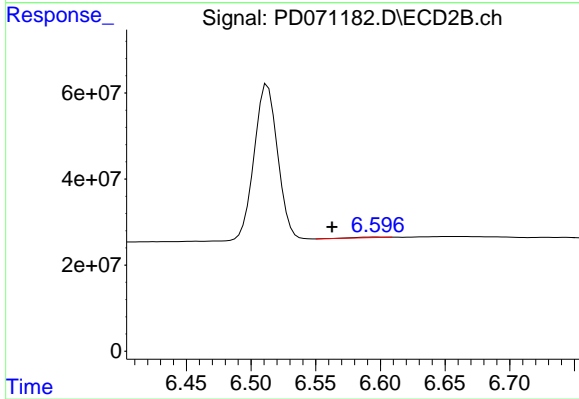
#22 Toxaphene-1

R.T.: 6.141 min
 Delta R.T.: -0.064 min
 Response: 655876
 Conc: 15.58 ng/ml



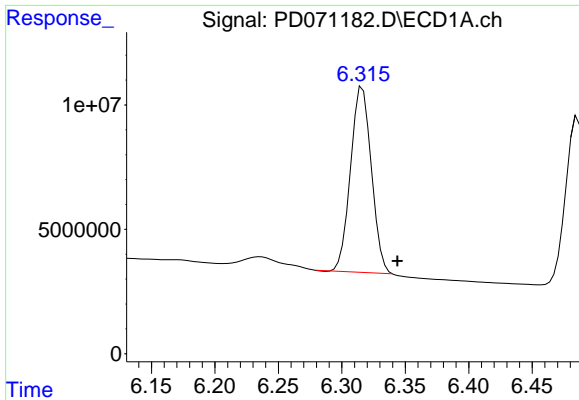
#23 Toxaphene-2

R.T.: 6.051 min
 Delta R.T.: -0.026 min
 Response: 2244720
 Conc: 146.13 ng/ml



#23 Toxaphene-2

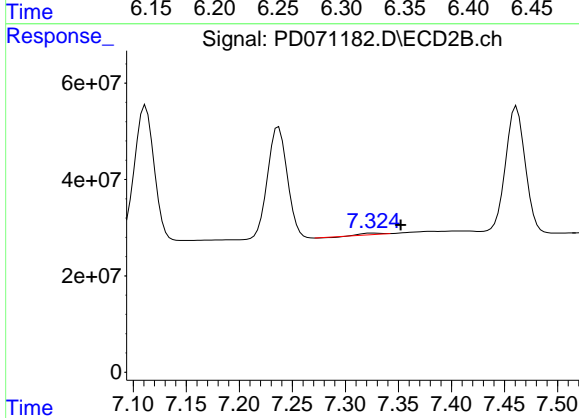
R.T.: 6.597 min
 Delta R.T.: 0.034 min
 Response: 1993834
 Conc: 20.97 ng/ml



#24 Toxaphene-3

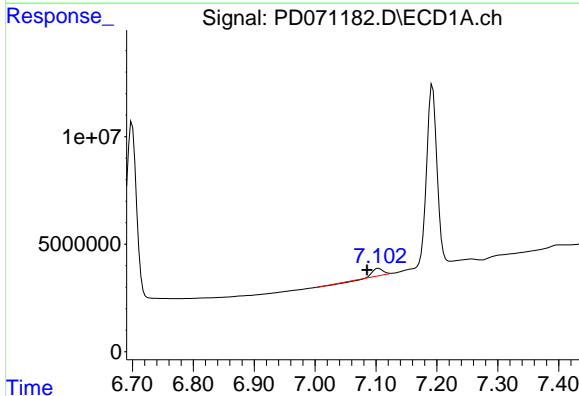
R.T.: 6.316 min
 Delta R.T.: -0.027 min
 Response: 84868605
 Conc: 5080.63 ng/ml

Instrument :
 ECD_D
 ClientSampleId :



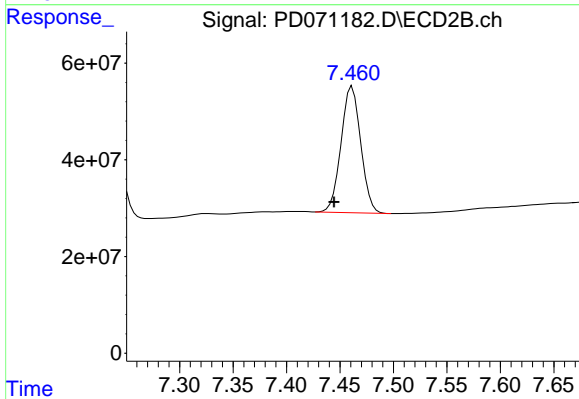
#24 Toxaphene-3

R.T.: 7.325 min
 Delta R.T.: -0.027 min
 Response: 2737882
 Conc: 10.35 ng/ml



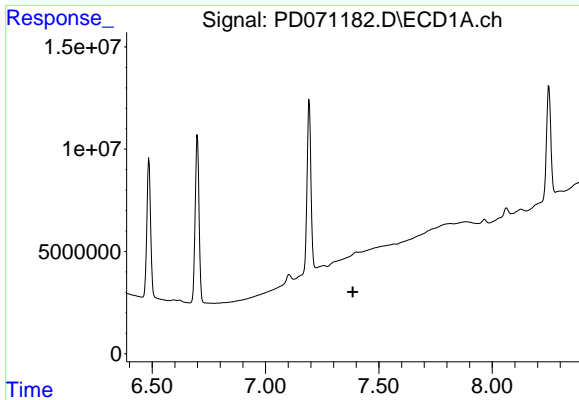
#25 Toxaphene-4

R.T.: 7.104 min
 Delta R.T.: 0.019 min
 Response: 2963244
 Conc: 42.25 ng/ml



#25 Toxaphene-4

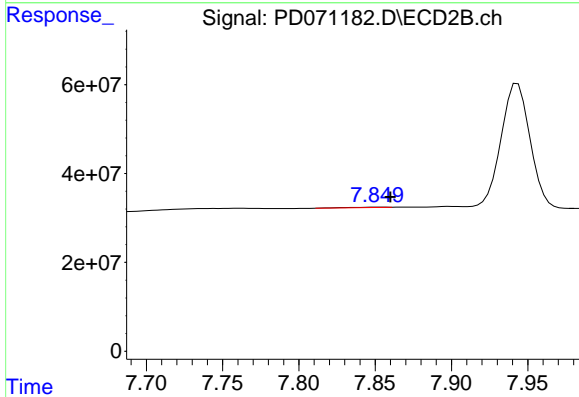
R.T.: 7.461 min
 Delta R.T.: 0.017 min
 Response: 335498976
 Conc: 1586.39 ng/ml



#26 Toxaphene-5

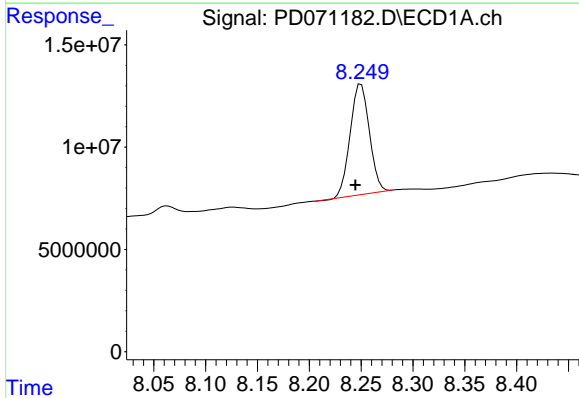
R.T.: 7.402 min
 Delta R.T.: 0.017 min
 Response: -3745947
 Conc: N.D.

Instrument :
 ECD_D
 ClientSampleId :



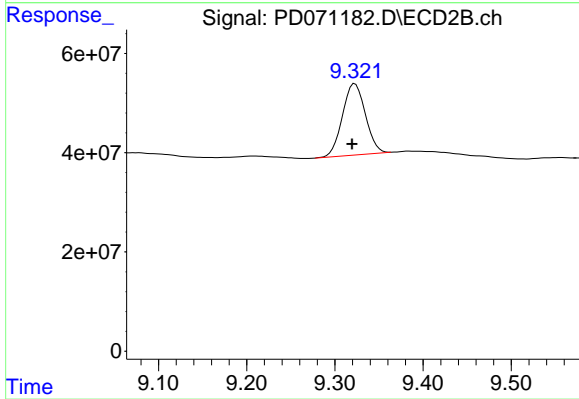
#26 Toxaphene-5

R.T.: 7.851 min
 Delta R.T.: -0.009 min
 Response: 1489300
 Conc: 12.10 ng/ml



#27 Decachlorobiphenyl

R.T.: 8.250 min
 Delta R.T.: 0.006 min
 Response: 69416588
 Conc: 27.34 ng/ml



#27 Decachlorobiphenyl

R.T.: 9.323 min
 Delta R.T.: 0.003 min
 Response: 259599004
 Conc: 28.11 ng/ml