

Data Path : Z:\pestpcbsrv\HPCHEM1\ECD_D\Data\PD072722\
 Data File : PD071196.D
 Signal(s) : Signal #1: ECD1A.ch Signal #2: ECD2B.ch
 Acq On : 26 Jul 2022 22:47
 Operator : AR\AJ
 Sample : N3741-10
 Misc :
 ALS Vial : 27 Sample Multiplier: 1

Instrument :
 ECD_D
 ClientSampleId :
 H0B35

Manual Integrations
 APPROVED

Reviewed By :Abdul Mirza 07/28/2022
 Supervised By :Ankita Jodhani 07/28/2022

Integration File signal 1: autoint1.e
 Integration File signal 2: autoint2.e
 Quant Time: Jul 27 03:31:08 2022
 Quant Method : Z:\pestpcbsrv\HPCHEM1\ECD_D\Method\PD071422CLP.M
 Quant Title : GC Extractables
 QLast Update : Thu Jul 14 05:14:58 2022
 Response via : Initial Calibration
 Integrator: ChemStation

Volume Inj. : 1 µl
 Signal #1 Phase : ZB-MR2 Signal #2 Phase: ZB-MR1
 Signal #1 Info : 30M x 0.32mm x0.2 Signal #2 Info : 30M x 0.32mm x 0.50µm

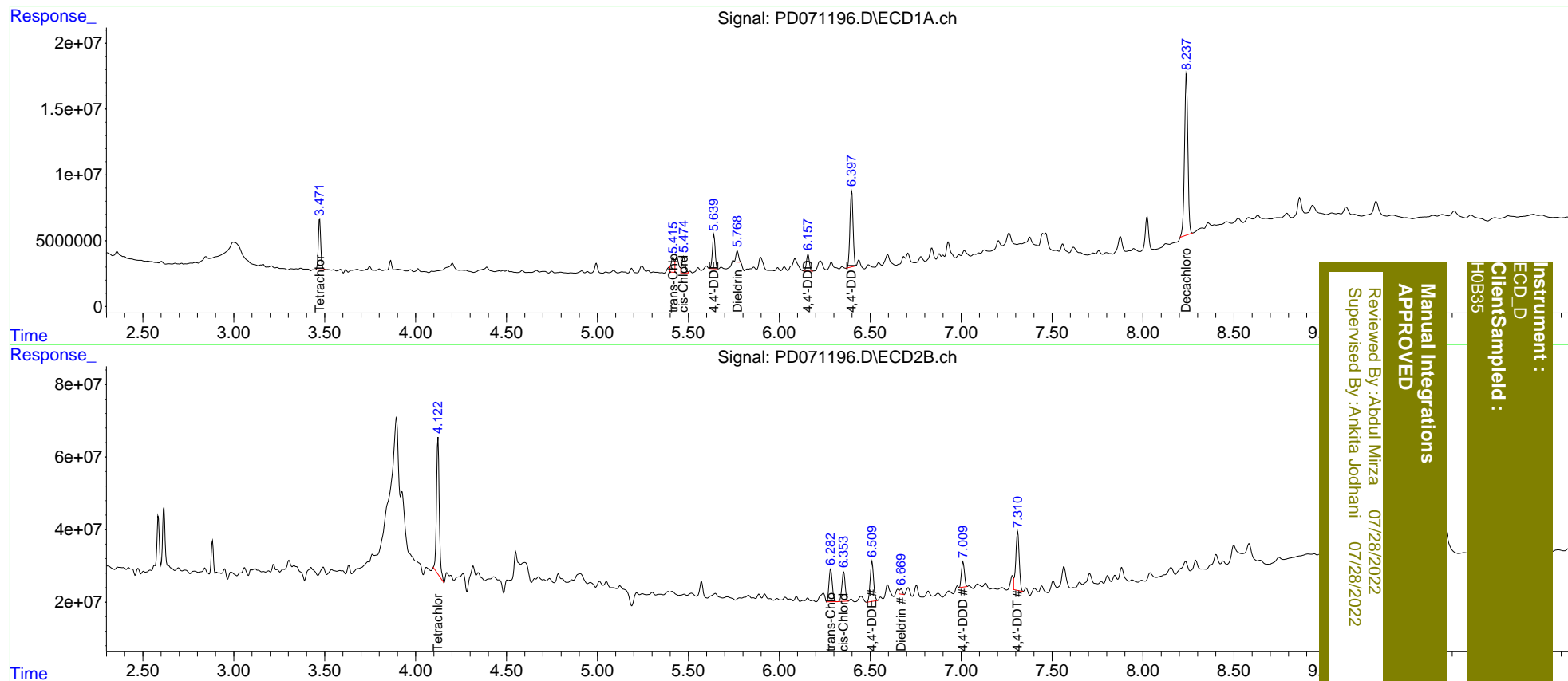
| Compound | RT#1 | RT#2 | Resp#1 | Resp#2 | ng/ml | ng/ml |
|-----------------------------|-------|-------|----------|----------|--------|----------|
| ----- | | | | | | |
| System Monitoring Compounds | | | | | | |
| 1) SA Tetrachlo... | 3.473 | 4.123 | 36118790 | 397.4E6 | 15.011 | 16.931 |
| 27) SA Decachlor... | 8.239 | 9.319 | 156.7E6 | 528.4E6 | 61.727 | 57.216 |
| Target Compounds | | | | | | |
| 10) B trans-Chl... | 5.415 | 6.283 | 15873216 | 112.8E6 | 4.561m | 7.493 # |
| 11) B cis-Chlor... | 5.475 | 6.355 | 15653831 | 101.3E6 | 4.580 | 7.016 # |
| 12) B 4,4'-DDE | 5.639 | 6.509 | 26797581 | 143.5E6 | 8.328m | 10.461m# |
| 13) MA Dieldrin | 5.768 | 6.669 | 8651712 | 15468308 | 2.584m | 1.117m# |
| 16) A 4,4'-DDD | 6.157 | 7.009 | 14123450 | 80358169 | 5.423m | 7.348m# |
| 17) MA 4,4'-DDT | 6.398 | 7.310 | 67991826 | 214.8E6 | 25.412 | 19.192m |
| ----- | | | | | | |

(f)=RT Delta > 1/2 Window (#)=Amounts differ by > 25% (m)=manual int.

Data Path : Z:\pestpcbsrv\HPCHEM1\ECD_D\Data\PD072722\
 Data File : PD071196.D
 Signal(s) : Signal #1: ECD1A.ch Signal #2: ECD2B.ch
 Acq On : 26 Jul 2022 22:47
 Operator : AR\AJ
 Sample : N3741-10
 Misc :
 ALS Vial : 27 Sample Multiplier: 1

Integration File signal 1: autoint1.e
 Integration File signal 2: autoint2.e
 Quant Time: Jul 27 03:31:08 2022
 Quant Method : Z:\pestpcbsrv\HPCHEM1\ECD_D\Method\PD071422CLP.M
 Quant Title : GC Extractables
 QLast Update : Thu Jul 14 05:14:58 2022
 Response via : Initial Calibration
 Integrator: ChemStation

Volume Inj. : 1 µl
 Signal #1 Phase : ZB-MR2 Signal #2 Phase: ZB-MR1
 Signal #1 Info : 30M x 0.32mm x0.2 Signal #2 Info : 30M x 0.32mm x 0.50µm



Instrument : ECD_D
 Client/SampleID : H0B35

Manual Integrations
 APPROVED

Reviewed By : Aboul Mirza 07/28/2022
 Supervised By : Ankita Jodhani 07/28/2022