

Data Path : Z:\pestpcbsrv\HPCHEM1\ECD\_D\Data\PD072821\  
 Data File : PD064496.D  
 Signal(s) : Signal #1: ECD1A.ch Signal #2: ECD2B.ch  
 Acq On : 29 Jul 2021 05:46  
 Operator : AR\AJ  
 Sample : M3084-05MS  
 Misc :  
 ALS Vial : 17 Sample Multiplier: 1

Instrument :  
 ECD\_D  
 ClientSampleId :  
 C0024MS

Integration File signal 1: autoint1.e  
 Integration File signal 2: autoint2.e  
 Quant Time: Jul 29 06:49:11 2021  
 Quant Method : Z:\pestpcbsrv\HPCHEM1\ECD\_D\Method\PD072721CLP.M  
 Quant Title : GC Extractables  
 QLast Update : Wed Jul 28 07:07:14 2021  
 Response via : Initial Calibration  
 Integrator: ChemStation

Volume Inj. : 1 µl  
 Signal #1 Phase : ZB-MR2 Signal #2 Phase: ZB-MR1  
 Signal #1 Info : 30M x 0.32mm x0.2 Signal #2 Info : 30M x 0.32mm x 0.50µm

Compound	RT#1	RT#2	Resp#1	Resp#2	ng/ml	ng/ml
-----						
System Monitoring Compounds						
1) SA Tetrachlo...	5.406	4.619	17602857	159.2E6	14.756	17.417
27) SA Decachlor...	11.305	10.364	27900706	162.7E6	21.195	27.367 #
Target Compounds						
2) A alpha-BHC	5.988	5.322	63070185	460.5E6	38.715	37.359
3) MA gamma-BHC...	6.385	5.742	58415603	383.4E6	37.246	33.623
4) MA Heptachlor	7.035	6.151	59826335	349.3E6	35.598	30.812
5) MB Aldrin	7.405	6.475	56895163	377.3E6	36.120	35.869
6) B beta-BHC	6.644	6.117	26642413	94354934	34.150	15.553 #
7) B delta-BHC	6.909	6.379	58810555	397.0E6	33.796	36.544
8) B Heptachlor...	7.875	7.048	62104939	317.4E6	36.174	34.291
9) A Endosulfan I	8.279	7.450	47228368	274.7E6	33.503	35.721
10) B trans-Chl...	8.142	7.322	76452960	418.5E6	47.709	46.144
11) B cis-Chlor...	8.227	7.393	48677986	298.6E6	31.242	33.563
12) B 4,4'-DDE	8.421	7.605	110.1E6	521.0E6	76.373	69.054
13) MA Dieldrin	8.570	7.736	153.9E6	511.3E6	103.176	63.664 #
14) MA Endrin	8.809	8.026	111.8E6	438.7E6	87.327	76.372
15) B Endosulfa...	9.043	8.334	107.2E6	473.4E6	82.552	82.005
16) A 4,4'-DDD	8.963	8.187	251.2E6	411.3E6	204.623	71.418 #
17) MA 4,4'-DDT	9.280	8.444	-19612826	994.4E6	N.D.	180.647
18) B Endrin al...	9.180	8.521	91397073	-124154912	80.674	N.D. #
19) B Endosulfa...	9.418	8.752	89488396	749.5E6	64.932	139.039 #
20) A Methoxychlor	9.771	9.041	252.0E6	501.7E6	352.188	195.912 #
21) B Endrin ke...	9.913	9.270	113.5E6	332.6E6	75.014	55.456 #
22) Toxaphene-1	8.421	7.736	110.1E6	511.3E6	11796.672	13590.125
23) Toxaphene-2	8.963	7.968	251.2E6	1859257	14408.940	22.017 #
24) Toxaphene-3	9.180	8.391	91397073	106.0E6	7539.960	925.227 #
25) Toxaphene-4	9.388	8.781	45266849	29805849	1884.326	529.113 #
26) Toxaphene-5	9.802	9.158	18007699	4762717	975.346	37.886 #

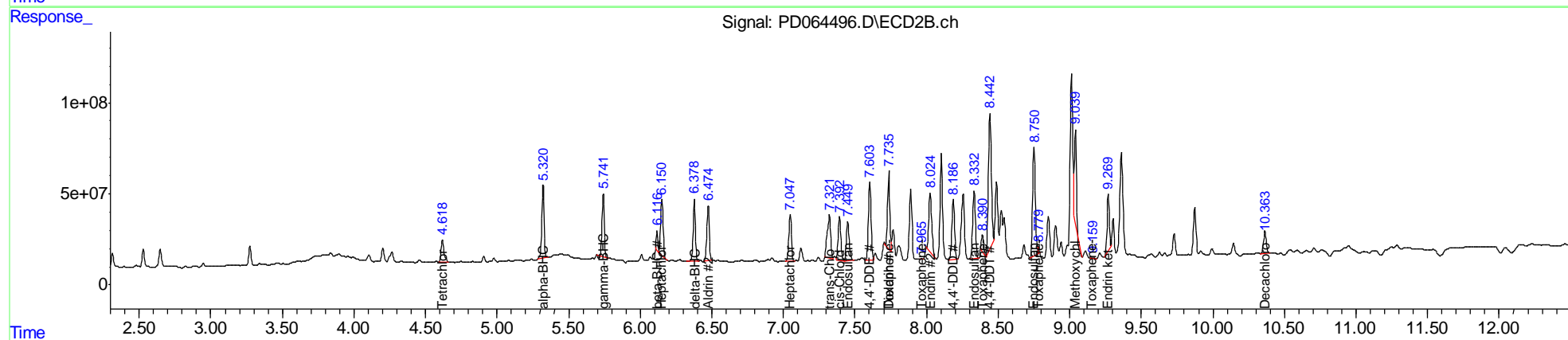
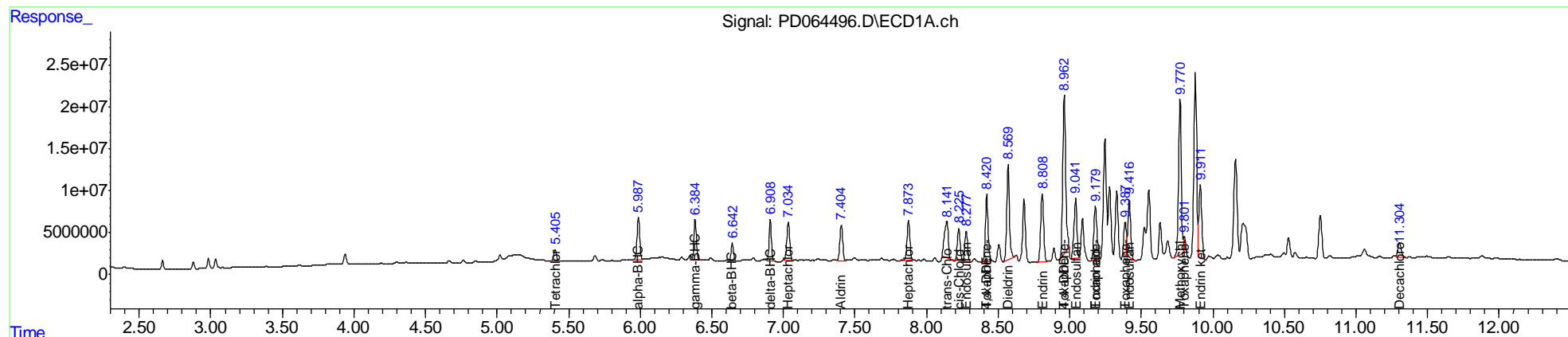
(f)=RT Delta > 1/2 Window (#)=Amounts differ by > 25% (m)=manual int.

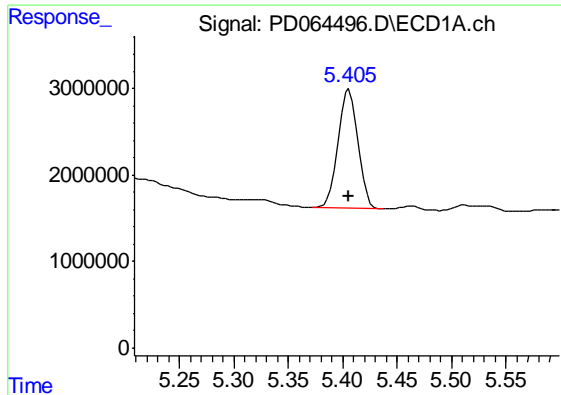
Data Path : Z:\pestpcbsrv\HPCHEM1\ECD\_D\Data\PD072821\  
 Data File : PD064496.D  
 Signal(s) : Signal #1: ECD1A.ch Signal #2: ECD2B.ch  
 Acq On : 29 Jul 2021 05:46  
 Operator : AR\AJ  
 Sample : M3084-05MS  
 Misc :  
 ALS Vial : 17 Sample Multiplier: 1

Instrument :  
 ECD\_D  
 ClientSampleId :  
 C0024MS

Integration File signal 1: autoint1.e  
 Integration File signal 2: autoint2.e  
 Quant Time: Jul 29 06:49:11 2021  
 Quant Method : Z:\pestpcbsrv\HPCHEM1\ECD\_D\Method\PD072721CLP.M  
 Quant Title : GC Extractables  
 QLast Update : Wed Jul 28 07:07:14 2021  
 Response via : Initial Calibration  
 Integrator: ChemStation

Volume Inj. : 1 µl  
 Signal #1 Phase : ZB-MR2 Signal #2 Phase: ZB-MR1  
 Signal #1 Info : 30M x 0.32mm x0.2 Signal #2 Info : 30M x 0.32mm x 0.50µm

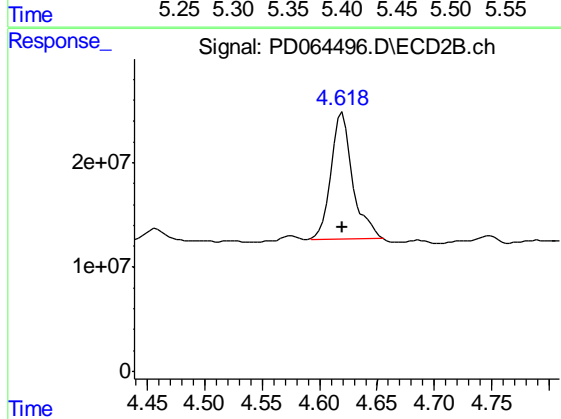




#1 Tetrachloro-m-xylene

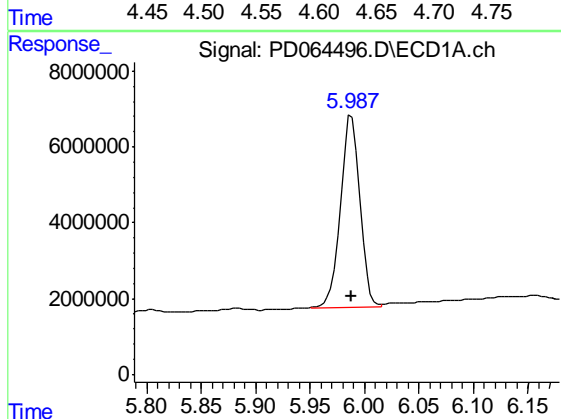
R.T.: 5.406 min  
 Delta R.T.: 0.001 min  
 Response: 17602857  
 Conc: 14.76 ng/ml

Instrument :  
 ECD\_D  
 ClientSampleId :  
 C0024MS



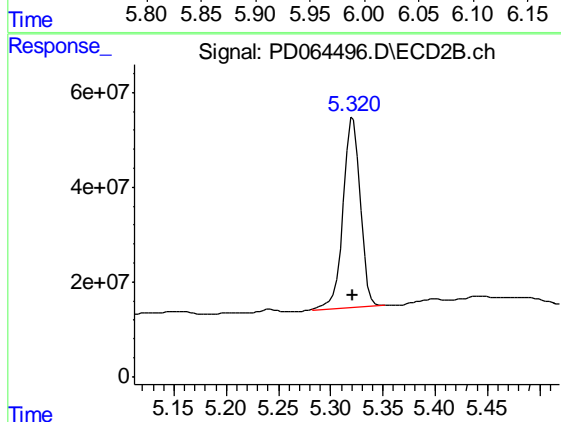
#1 Tetrachloro-m-xylene

R.T.: 4.619 min  
 Delta R.T.: 0.000 min  
 Response: 159153810  
 Conc: 17.42 ng/ml



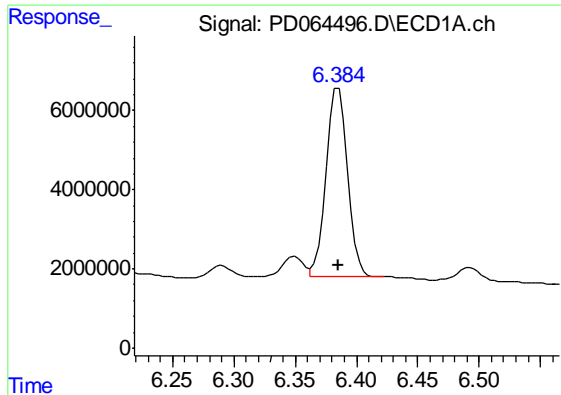
#2 alpha-BHC

R.T.: 5.988 min  
 Delta R.T.: 0.000 min  
 Response: 63070185  
 Conc: 38.71 ng/ml



#2 alpha-BHC

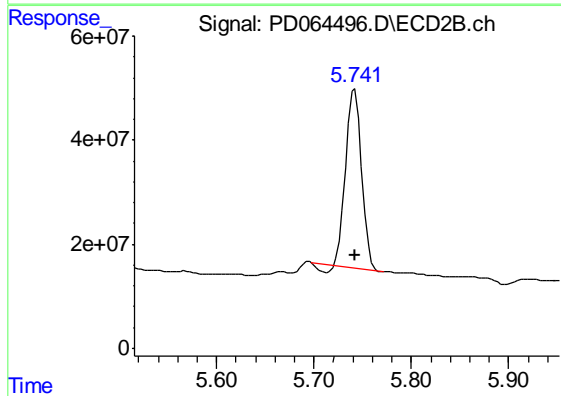
R.T.: 5.322 min  
 Delta R.T.: 0.000 min  
 Response: 460467720  
 Conc: 37.36 ng/ml



#3 gamma-BHC (Lindane)

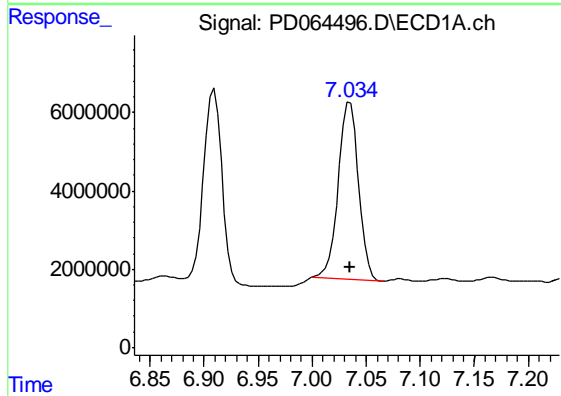
R.T.: 6.385 min  
 Delta R.T.: 0.000 min  
 Response: 58415603  
 Conc: 37.25 ng/ml

Instrument :  
 ECD\_D  
 ClientSampleId :  
 C0024MS



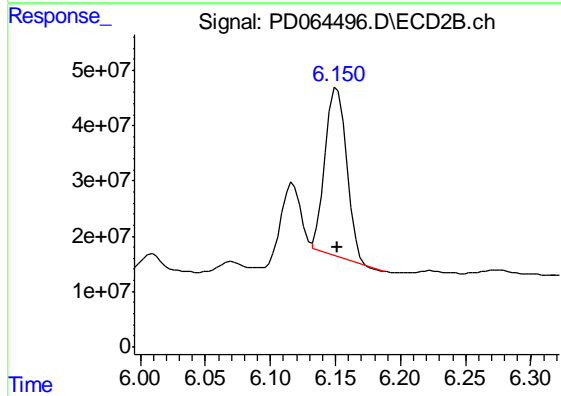
#3 gamma-BHC (Lindane)

R.T.: 5.742 min  
 Delta R.T.: 0.000 min  
 Response: 383416006  
 Conc: 33.62 ng/ml



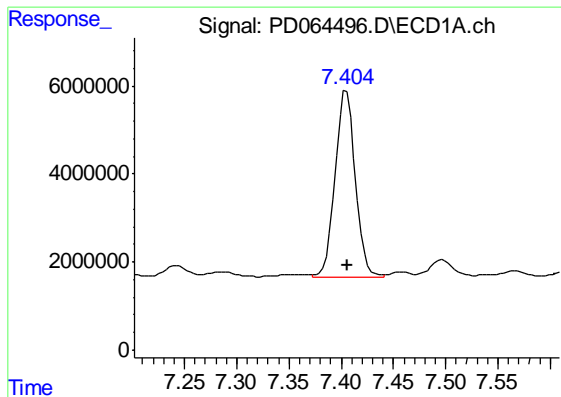
#4 Heptachlor

R.T.: 7.035 min  
 Delta R.T.: 0.000 min  
 Response: 59826335  
 Conc: 35.60 ng/ml



#4 Heptachlor

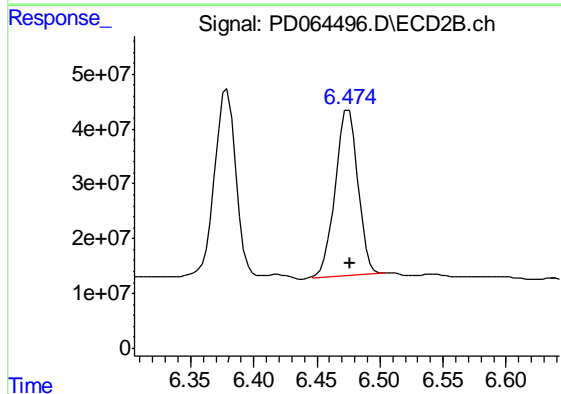
R.T.: 6.151 min  
 Delta R.T.: 0.000 min  
 Response: 349339006  
 Conc: 30.81 ng/ml



#5 Aldrin

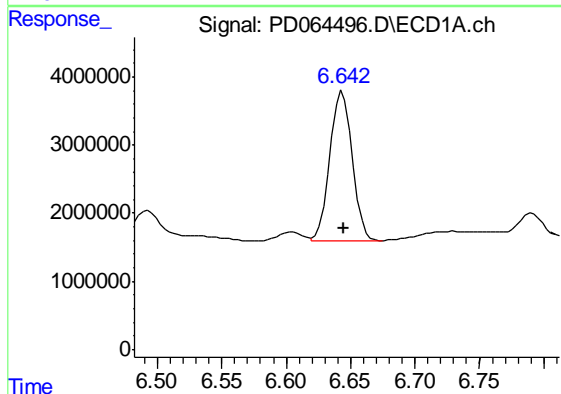
R.T.: 7.405 min  
 Delta R.T.: 0.000 min  
 Response: 56895163  
 Conc: 36.12 ng/ml

Instrument :  
 ECD\_D  
 ClientSampleId :  
 C0024MS



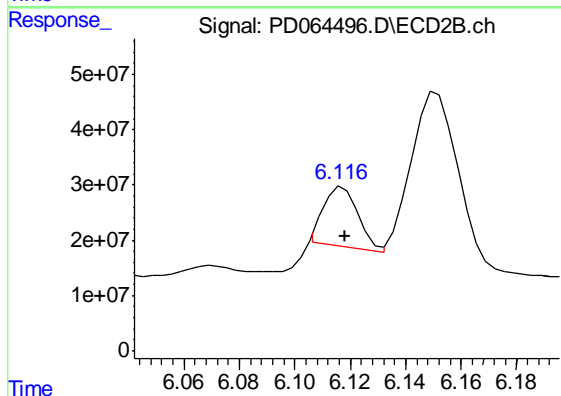
#5 Aldrin

R.T.: 6.475 min  
 Delta R.T.: -0.001 min  
 Response: 377313617  
 Conc: 35.87 ng/ml



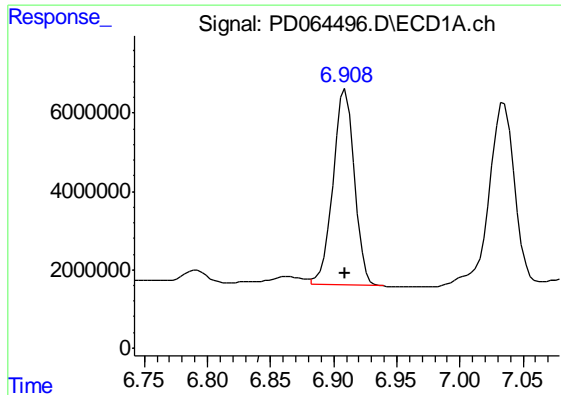
#6 beta-BHC

R.T.: 6.644 min  
 Delta R.T.: 0.000 min  
 Response: 26642413  
 Conc: 34.15 ng/ml



#6 beta-BHC

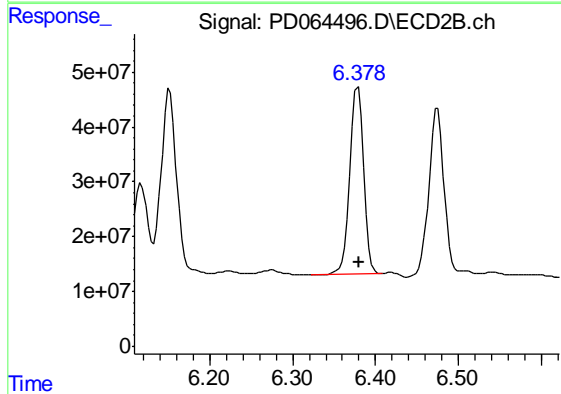
R.T.: 6.117 min  
 Delta R.T.: 0.000 min  
 Response: 94354934  
 Conc: 15.55 ng/ml



#7 delta-BHC

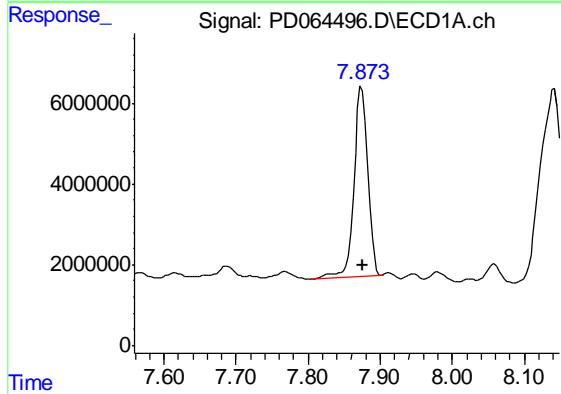
R.T.: 6.909 min  
Delta R.T.: 0.000 min  
Response: 58810555  
Conc: 33.80 ng/ml

Instrument :  
ECD\_D  
ClientSampleId :  
C0024MS



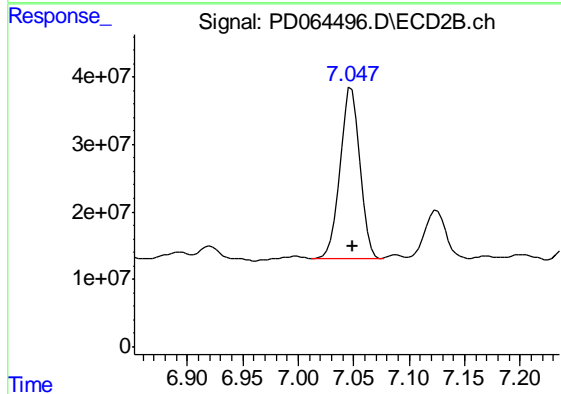
#7 delta-BHC

R.T.: 6.379 min  
Delta R.T.: 0.000 min  
Response: 396995875  
Conc: 36.54 ng/ml



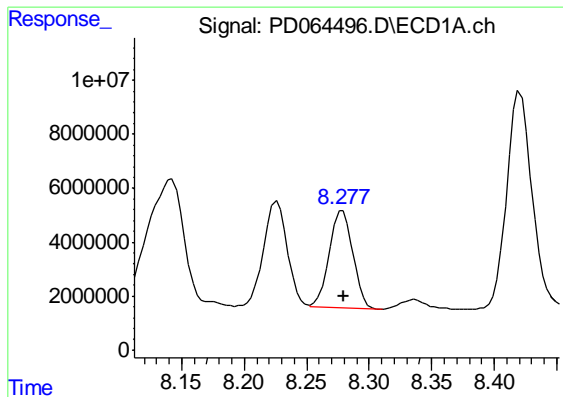
#8 Heptachlor epoxide

R.T.: 7.875 min  
Delta R.T.: -0.001 min  
Response: 62104939  
Conc: 36.17 ng/ml



#8 Heptachlor epoxide

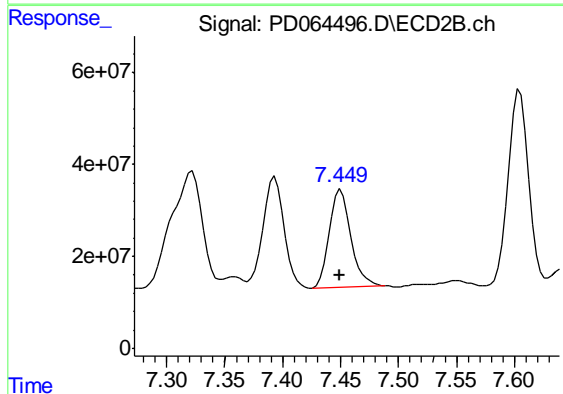
R.T.: 7.048 min  
Delta R.T.: 0.000 min  
Response: 317433152  
Conc: 34.29 ng/ml



#9 Endosulfan I

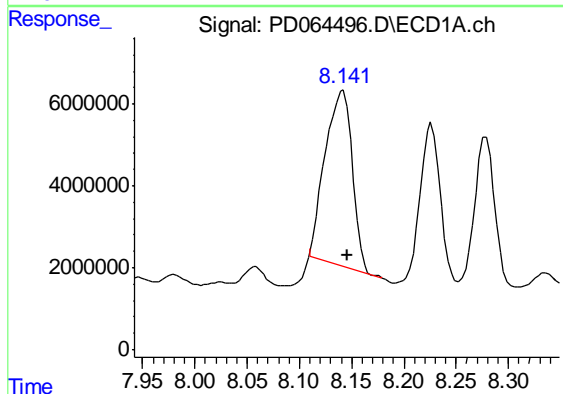
R.T.: 8.279 min  
 Delta R.T.: 0.000 min  
 Response: 47228368  
 Conc: 33.50 ng/ml

Instrument :  
 ECD\_D  
 ClientSampleId :  
 C0024MS



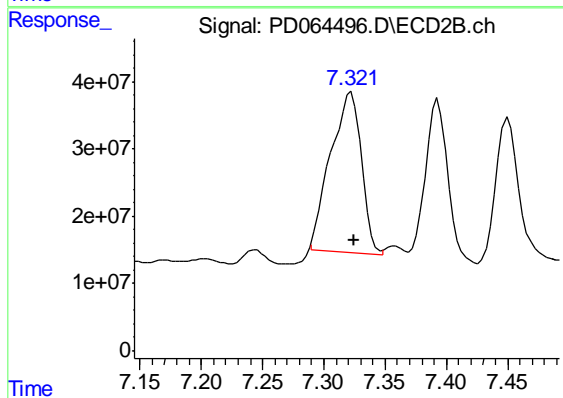
#9 Endosulfan I

R.T.: 7.450 min  
 Delta R.T.: 0.000 min  
 Response: 274678302  
 Conc: 35.72 ng/ml



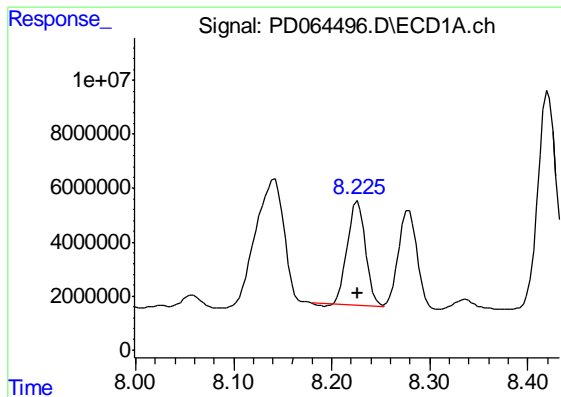
#10 trans-Chlordane

R.T.: 8.142 min  
 Delta R.T.: -0.004 min  
 Response: 76452960  
 Conc: 47.71 ng/ml



#10 trans-Chlordane

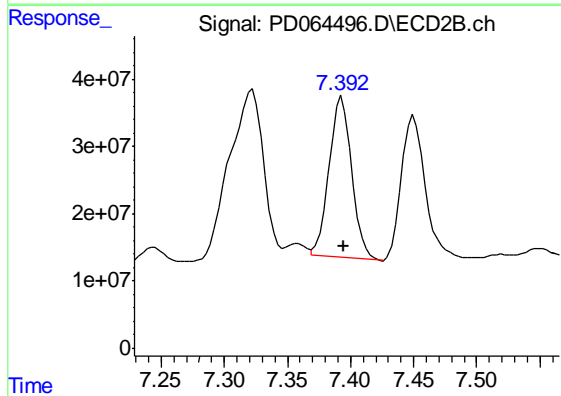
R.T.: 7.322 min  
 Delta R.T.: -0.003 min  
 Response: 418531129  
 Conc: 46.14 ng/ml



#11 cis-Chlordane

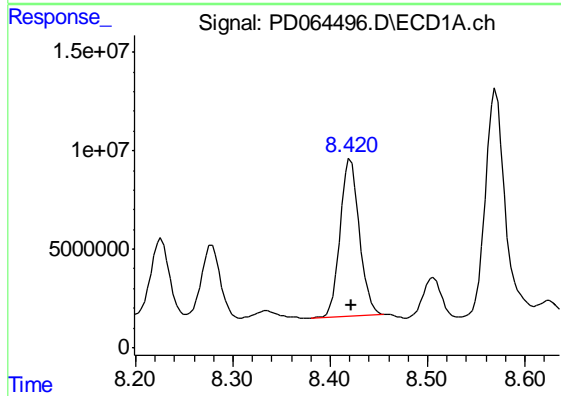
R.T.: 8.227 min  
 Delta R.T.: 0.000 min  
 Response: 48677986  
 Conc: 31.24 ng/ml

Instrument :  
 ECD\_D  
 ClientSampleId :  
 C0024MS



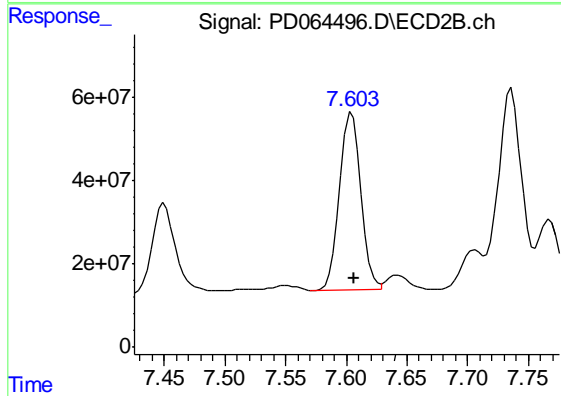
#11 cis-Chlordane

R.T.: 7.393 min  
 Delta R.T.: -0.001 min  
 Response: 298564446  
 Conc: 33.56 ng/ml



#12 4,4'-DDE

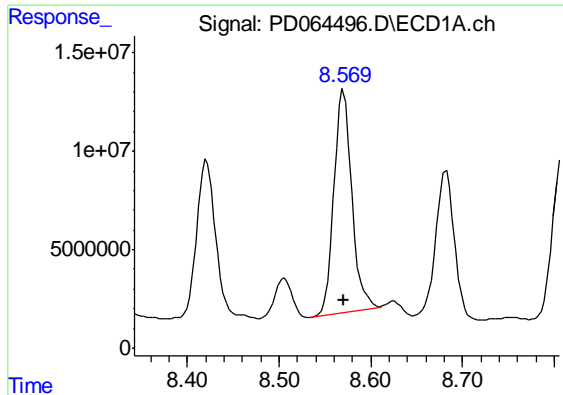
R.T.: 8.421 min  
 Delta R.T.: -0.001 min  
 Response: 110077138  
 Conc: 76.37 ng/ml



#12 4,4'-DDE

R.T.: 7.605 min  
 Delta R.T.: -0.001 min  
 Response: 521027777  
 Conc: 69.05 ng/ml

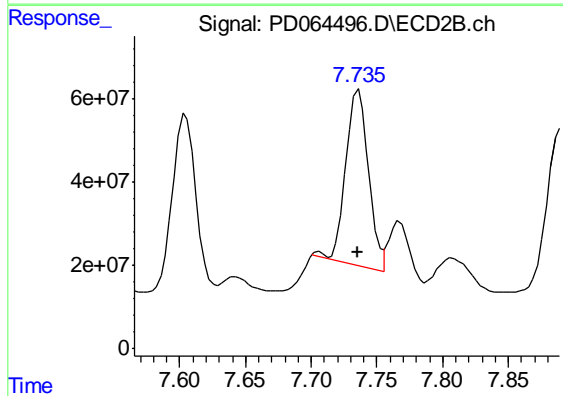




#13 Dieldrin

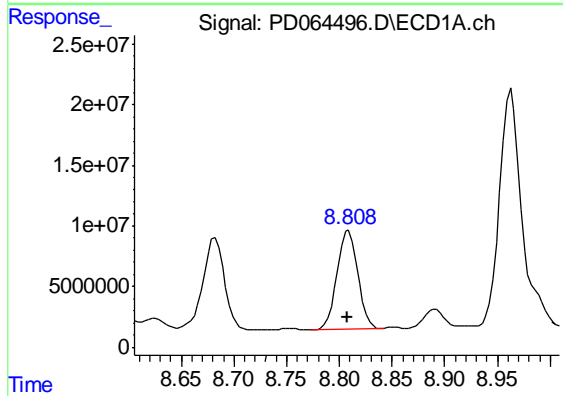
R.T.: 8.570 min  
 Delta R.T.: 0.000 min  
 Response: 153865265  
 Conc: 103.18 ng/ml

Instrument :  
 ECD\_D  
 ClientSampleId :  
 C0024MS



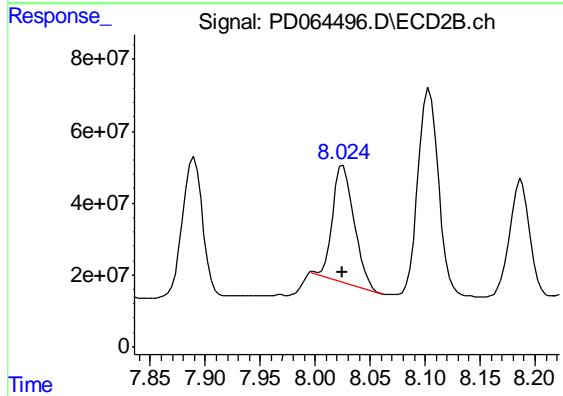
#13 Dieldrin

R.T.: 7.736 min  
 Delta R.T.: 0.000 min  
 Response: 511335011  
 Conc: 63.66 ng/ml



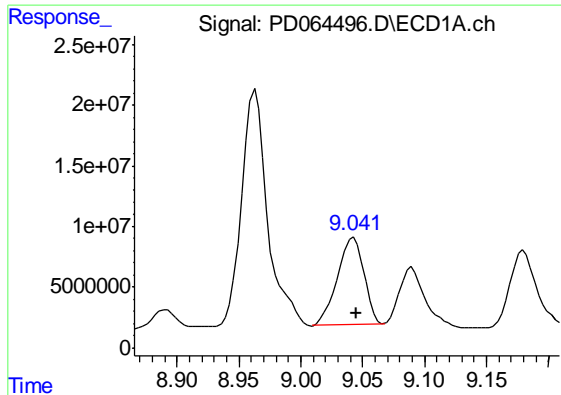
#14 Endrin

R.T.: 8.809 min  
 Delta R.T.: 0.001 min  
 Response: 111812658  
 Conc: 87.33 ng/ml



#14 Endrin

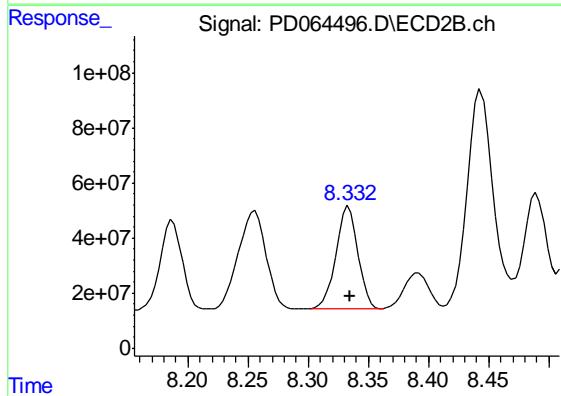
R.T.: 8.026 min  
 Delta R.T.: 0.000 min  
 Response: 438721649  
 Conc: 76.37 ng/ml



#15 Endosulfan II

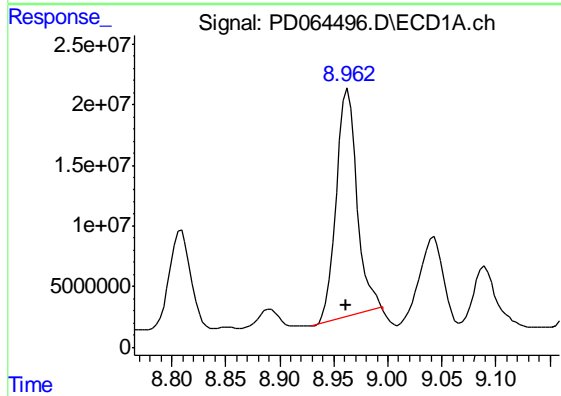
R.T.: 9.043 min  
 Delta R.T.: -0.002 min  
 Response: 107201724  
 Conc: 82.55 ng/ml

Instrument :  
 ECD\_D  
 ClientSampled :  
 C0024MS



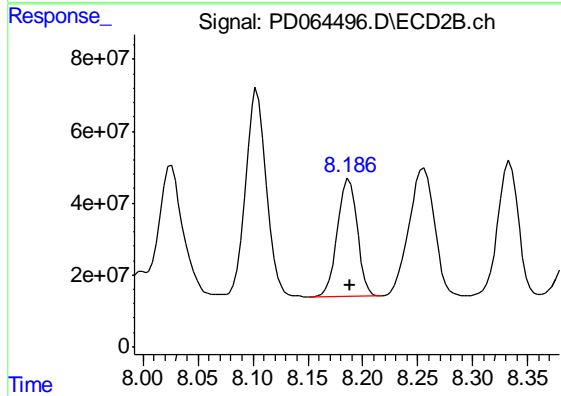
#15 Endosulfan II

R.T.: 8.334 min  
 Delta R.T.: 0.000 min  
 Response: 473366540  
 Conc: 82.00 ng/ml



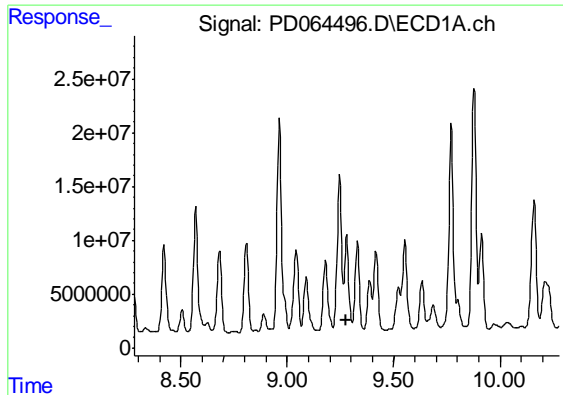
#16 4,4'-DDD

R.T.: 8.963 min  
 Delta R.T.: 0.001 min  
 Response: 251184822  
 Conc: 204.62 ng/ml



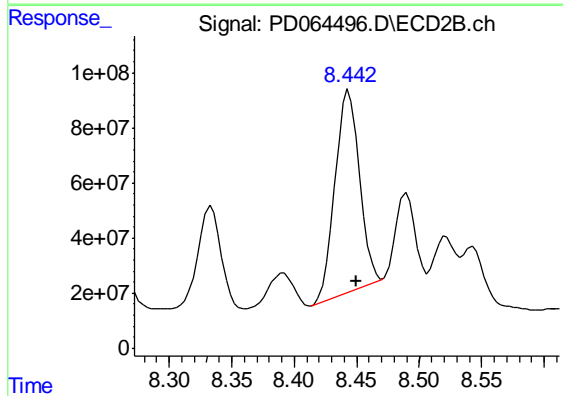
#16 4,4'-DDD

R.T.: 8.187 min  
 Delta R.T.: 0.000 min  
 Response: 411332307  
 Conc: 71.42 ng/ml

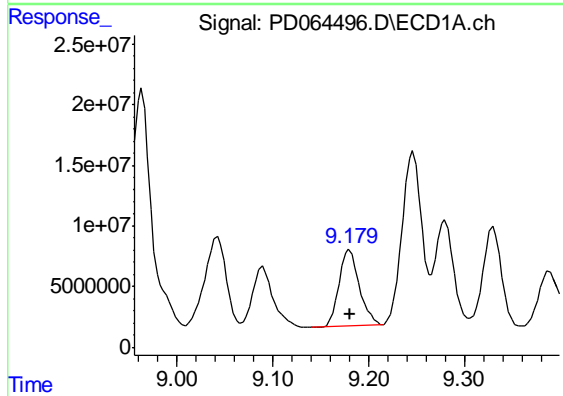


#17 4,4'-DDT  
 R.T.: 9.280 min  
 Delta R.T.: 0.000 min  
 Response: -19612826  
 Conc: N.D.

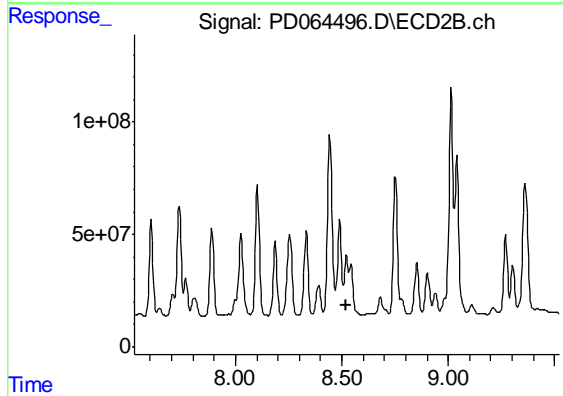
Instrument :  
 ECD\_D  
 ClientSampleId :  
 C0024MS



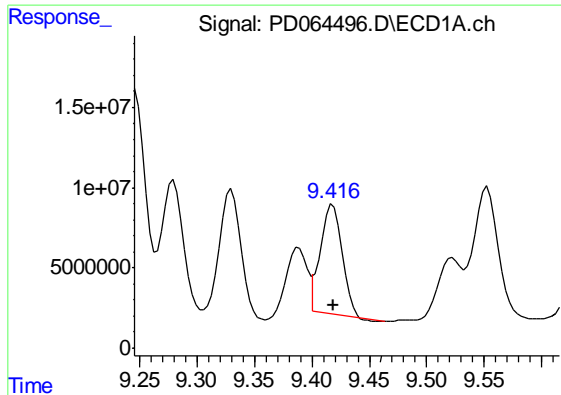
#17 4,4'-DDT  
 R.T.: 8.444 min  
 Delta R.T.: -0.006 min  
 Response: 994389660  
 Conc: 180.65 ng/ml



#18 Endrin aldehyde  
 R.T.: 9.180 min  
 Delta R.T.: 0.000 min  
 Response: 91397073  
 Conc: 80.67 ng/ml



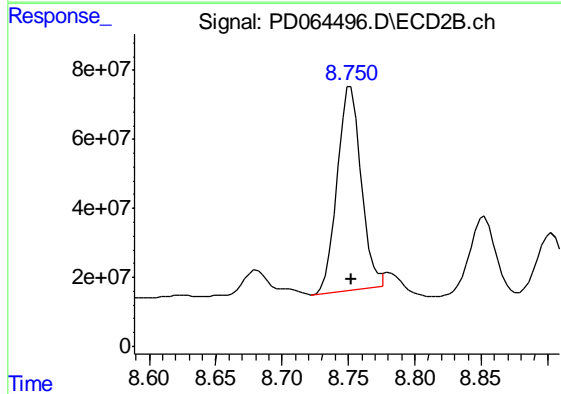
#18 Endrin aldehyde  
 R.T.: 8.521 min  
 Delta R.T.: 0.000 min  
 Response: -124154912  
 Conc: N.D.



#19 Endosulfan Sulfate

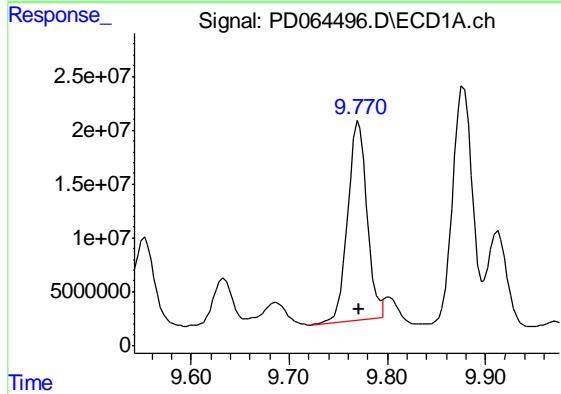
R.T.: 9.418 min  
 Delta R.T.: 0.000 min  
 Response: 89488396  
 Conc: 64.93 ng/ml

Instrument :  
 ECD\_D  
 ClientSampleId :  
 C0024MS



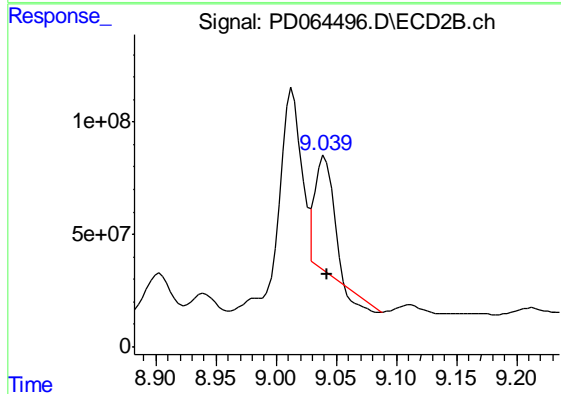
#19 Endosulfan Sulfate

R.T.: 8.752 min  
 Delta R.T.: 0.000 min  
 Response: 749451304  
 Conc: 139.04 ng/ml



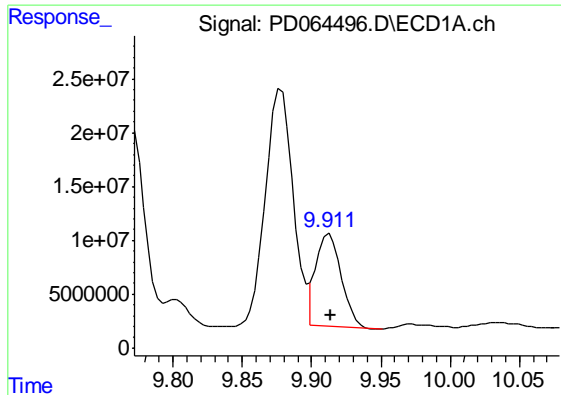
#20 Methoxychlor

R.T.: 9.771 min  
 Delta R.T.: 0.000 min  
 Response: 252012038  
 Conc: 352.19 ng/ml



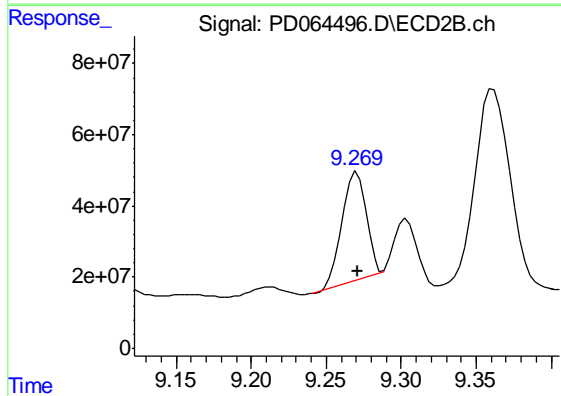
#20 Methoxychlor

R.T.: 9.041 min  
 Delta R.T.: -0.001 min  
 Response: 501653899  
 Conc: 195.91 ng/ml

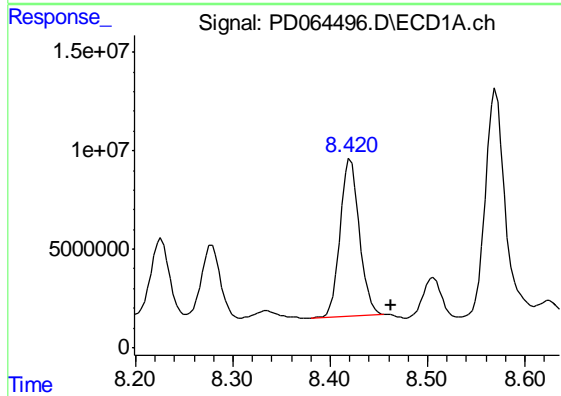


#21 Endrin ketone  
 R.T.: 9.913 min  
 Delta R.T.: 0.000 min  
 Response: 113487283  
 Conc: 75.01 ng/ml

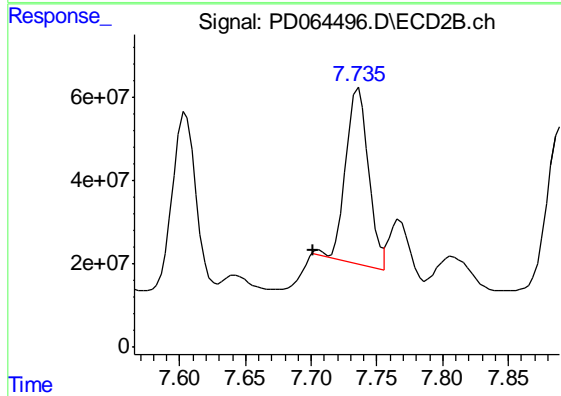
Instrument :  
 ECD\_D  
 ClientSampleId :  
 C0024MS



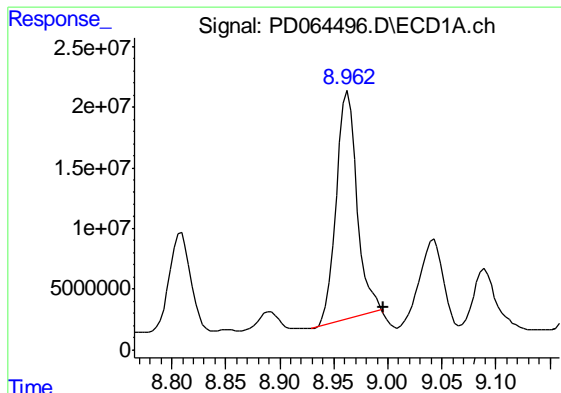
#21 Endrin ketone  
 R.T.: 9.270 min  
 Delta R.T.: 0.000 min  
 Response: 332645634  
 Conc: 55.46 ng/ml



#22 Toxaphene-1  
 R.T.: 8.421 min  
 Delta R.T.: -0.042 min  
 Response: 110077138  
 Conc: 11796.67 ng/ml



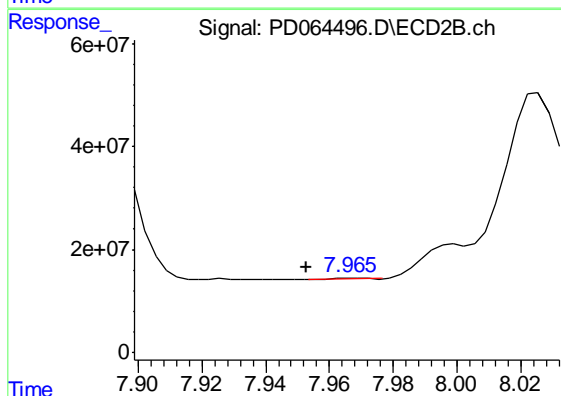
#22 Toxaphene-1  
 R.T.: 7.736 min  
 Delta R.T.: 0.035 min  
 Response: 511335011  
 Conc: 13590.13 ng/ml



#23 Toxaphene-2

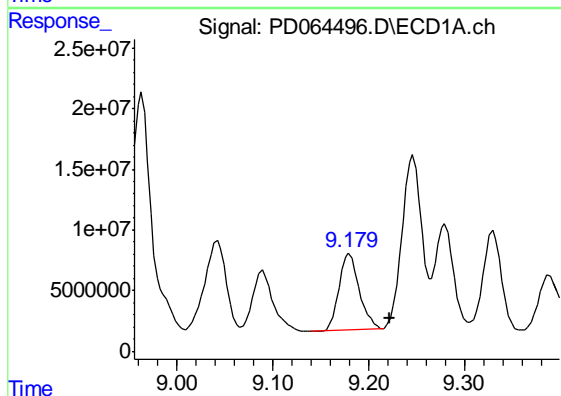
R.T.: 8.963 min  
 Delta R.T.: -0.033 min  
 Response: 251184822  
 Conc: 14408.94 ng/ml

Instrument :  
 ECD\_D  
 ClientSampleId :  
 C0024MS



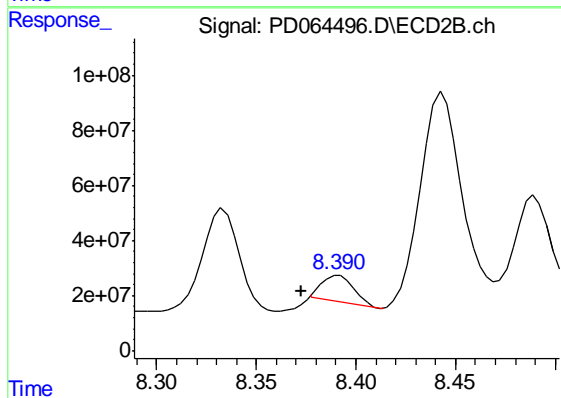
#23 Toxaphene-2

R.T.: 7.968 min  
 Delta R.T.: 0.016 min  
 Response: 1859257  
 Conc: 22.02 ng/ml



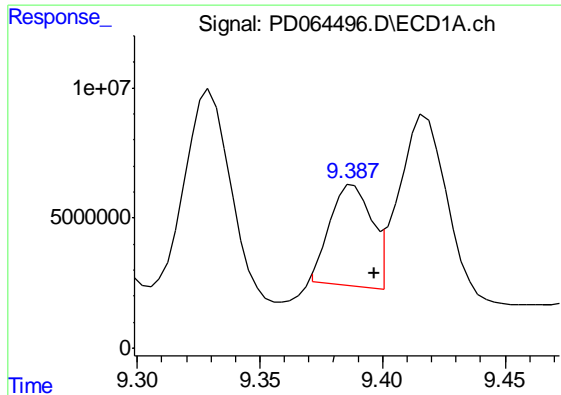
#24 Toxaphene-3

R.T.: 9.180 min  
 Delta R.T.: -0.041 min  
 Response: 91397073  
 Conc: 7539.96 ng/ml



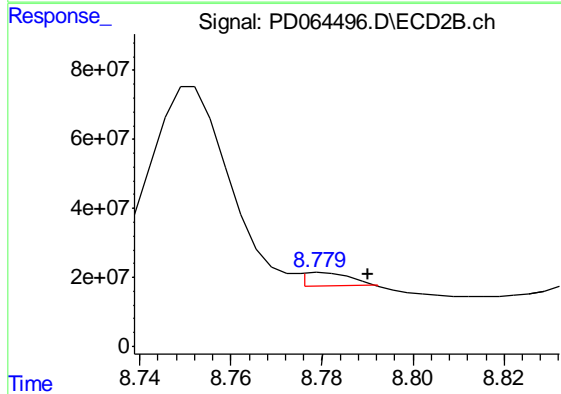
#24 Toxaphene-3

R.T.: 8.391 min  
 Delta R.T.: 0.019 min  
 Response: 106009940  
 Conc: 925.23 ng/ml

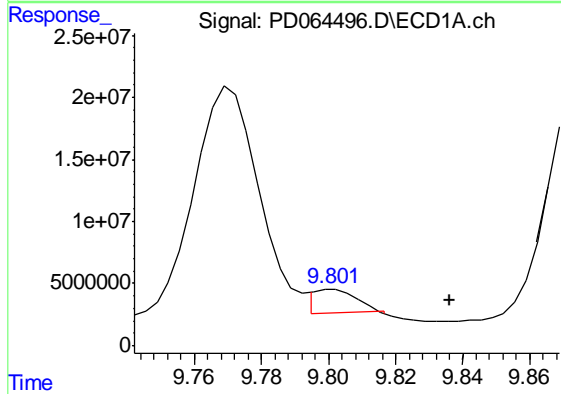


#25 Toxaphene-4  
 R.T.: 9.388 min  
 Delta R.T.: -0.008 min  
 Response: 45266849  
 Conc: 1884.33 ng/ml

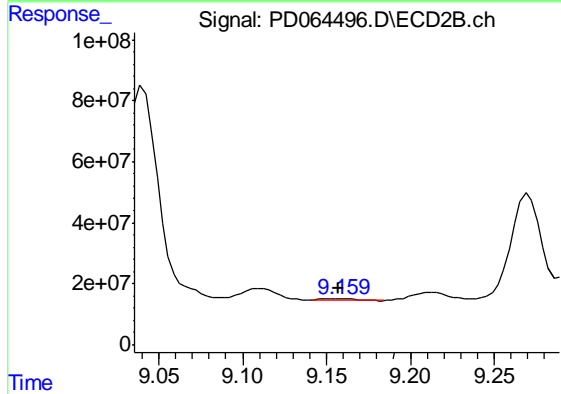
Instrument :  
 ECD\_D  
 ClientSampleId :  
 C0024MS



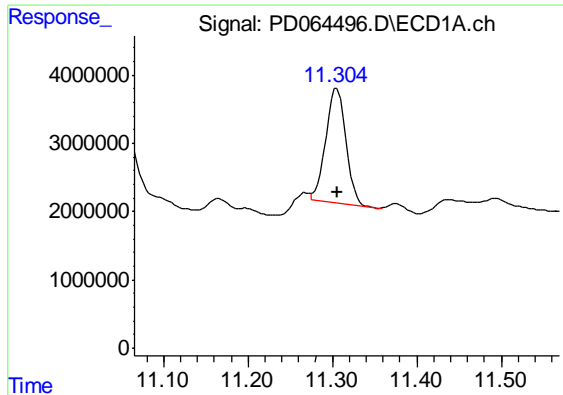
#25 Toxaphene-4  
 R.T.: 8.781 min  
 Delta R.T.: -0.009 min  
 Response: 29805849  
 Conc: 529.11 ng/ml



#26 Toxaphene-5  
 R.T.: 9.802 min  
 Delta R.T.: -0.034 min  
 Response: 18007699  
 Conc: 975.35 ng/ml



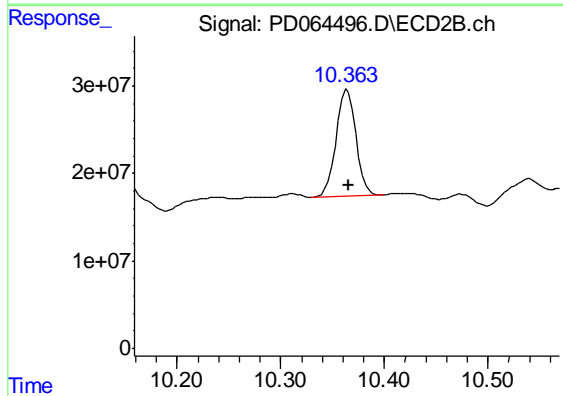
#26 Toxaphene-5  
 R.T.: 9.158 min  
 Delta R.T.: 0.001 min  
 Response: 4762717  
 Conc: 37.89 ng/ml



#27 Decachlorobiphenyl

R.T.: 11.305 min  
Delta R.T.: 0.000 min  
Response: 27900706  
Conc: 21.19 ng/ml

Instrument :  
ECD\_D  
ClientSampleId :  
C0024MS



#27 Decachlorobiphenyl

R.T.: 10.364 min  
Delta R.T.: 0.000 min  
Response: 162746197  
Conc: 27.37 ng/ml