

Data Path : Z:\pestpcbsrv\HPCHEM1\ECD\_D\Data\PD072821\  
 Data File : PD064496.D  
 Signal(s) : Signal #1: ECD1A.ch Signal #2: ECD2B.ch  
 Acq On : 29 Jul 2021 05:46  
 Operator : AR\AJ  
 Sample : M3084-05MS  
 Misc :  
 ALS Vial : 17 Sample Multiplier: 1

**Instrument :**  
 ECD\_D  
**ClientSampleId :**  
 C0024MS

**Manual Integrations**  
**APPROVED**  
 mohammad  
 7/30/2021 2:28:00 PM

Integration File signal 1: autoint1.e  
 Integration File signal 2: autoint2.e  
 Quant Time: Jul 29 06:49:11 2021  
 Quant Method : Z:\pestpcbsrv\HPCHEM1\ECD\_D\Method\PD072721CLP.M  
 Quant Title : GC Extractables  
 QLast Update : Wed Jul 28 07:07:14 2021  
 Response via : Initial Calibration  
 Integrator: ChemStation

Volume Inj. : 1 µl  
 Signal #1 Phase : ZB-MR2 Signal #2 Phase: ZB-MR1  
 Signal #1 Info : 30M x 0.32mm x0.2 Signal #2 Info : 30M x 0.32mm x 0.50µm

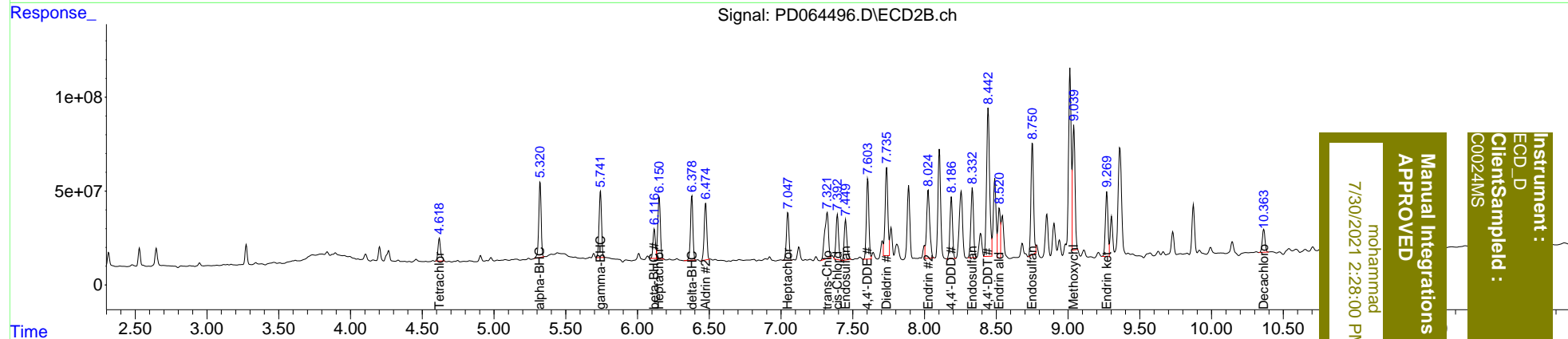
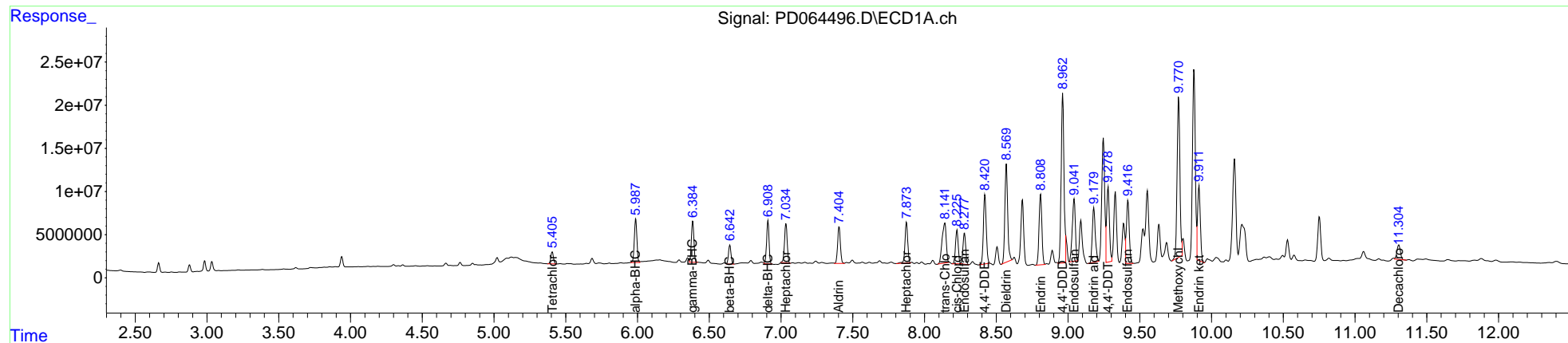
Compound	RT#1	RT#2	Resp#1	Resp#2	ng/ml	ng/ml
-----						
System Monitoring Compounds						
1) SA Tetrachlo...	5.406	4.619	17602857	159.2E6	14.756	17.417
27) SA Decachlor...	11.305	10.364	27900706	162.7E6	21.195	27.367 #
Target Compounds						
2) A alpha-BHC	5.988	5.322	63070185	460.5E6	38.715	37.359
3) MA gamma-BHC...	6.385	5.741	58415603	420.1E6	37.246	36.839m
4) MA Heptachlor	7.035	6.150	59826335	412.8E6	35.598	36.411m
5) MB Aldrin	7.405	6.475	56895163	377.3E6	36.120	35.869
6) B beta-BHC	6.644	6.116	26642413	192.0E6	34.150	31.643m
7) B delta-BHC	6.909	6.379	58810555	397.0E6	33.796	36.544
8) B Heptachlo...	7.875	7.048	62104939	317.4E6	36.174	34.291
9) A Endosulfan I	8.279	7.450	47228368	274.7E6	33.503	35.721
10) B trans-Chl...	8.141	7.321	91905847	445.3E6	57.353m	49.100m
11) B cis-Chlor...	8.225	7.393	51475620	298.6E6	33.037m	33.563
12) B 4,4'-DDE	8.421	7.605	110.1E6	521.0E6	76.373	69.054
13) MA Dieldrin	8.570	7.735	153.9E6	607.6E6	103.176	75.655m#
14) MA Endrin	8.809	8.024	111.8E6	551.8E6	87.327	96.059m
15) B Endosulfa...	9.043	8.334	107.2E6	473.4E6	82.552	82.005
16) A 4,4'-DDD	8.962	8.187	268.1E6	411.3E6	218.401m	71.418 #
17) MA 4,4'-DDT	9.278	8.442	114.4E6	1175.2E6	87.595m	213.489m#
18) B Endrin al...	9.180	8.520	91397073	313.5E6	80.674	63.517m
19) B Endosulfa...	9.416	8.752	99025600	749.5E6	71.852m	139.039 #
20) A Methoxychlor	9.771	9.039	252.0E6	798.3E6	352.188	311.766m
21) B Endrin ke...	9.913	9.269	113.5E6	426.2E6	75.014	71.045m

(f)=RT Delta > 1/2 Window (#)=Amounts differ by > 25% (m)=manual int.

Data Path : Z:\pestpcbsrv\HPCHEM1\ECD\_D\Data\PD072821\  
 Data File : PD064496.D  
 Signal(s) : Signal #1: ECD1A.ch Signal #2: ECD2B.ch  
 Acq On : 29 Jul 2021 05:46  
 Operator : AR\AJ  
 Sample : M3084-05MS  
 Misc :  
 ALS Vial : 17 Sample Multiplier: 1

Integration File signal 1: autoint1.e  
 Integration File signal 2: autoint2.e  
 Quant Time: Jul 29 06:49:11 2021  
 Quant Method : Z:\pestpcbsrv\HPCHEM1\ECD\_D\Method\PD072721CLP.M  
 Quant Title : GC Extractables  
 QLast Update : Wed Jul 28 07:07:14 2021  
 Response via : Initial Calibration  
 Integrator: ChemStation

Volume Inj. : 1 µl  
 Signal #1 Phase : ZB-MR2 Signal #2 Phase: ZB-MR1  
 Signal #1 Info : 30M x 0.32mm x0.2 Signal #2 Info : 30M x 0.32mm x 0.50µm



Instrument : ECD\_D  
 Client Sample Id : C0024MS  
 Manual Integrations APPROVED  
 mohammad  
 7/30/2021 2:28:00 PM