

Data Path : Z:\pestpcbsrv\HPCHEM1\ECD_D\Data\PD072821\
 Data File : PD064497.D
 Signal(s) : Signal #1: ECD1A.ch Signal #2: ECD2B.ch
 Acq On : 29 Jul 2021 06:02
 Operator : AR\AJ
 Sample : M3084-06MSD
 Misc :
 ALS Vial : 18 Sample Multiplier: 1

Instrument :
 ECD_D
 ClientSampleID :
 C0024MSD

Manual Integrations
 APPROVED

mohammad
 7/30/2021 2:28:03 PM

Integration File signal 1: autoint1.e
 Integration File signal 2: autoint2.e
 Quant Time: Jul 29 06:49:40 2021
 Quant Method : Z:\pestpcbsrv\HPCHEM1\ECD_D\Method\PD072721CLP.M
 Quant Title : GC Extractables
 QLast Update : Wed Jul 28 07:07:14 2021
 Response via : Initial Calibration
 Integrator: ChemStation

Volume Inj. : 1 µl
 Signal #1 Phase : ZB-MR1 Signal #2 Phase: ZB-MR1
 Signal #1 Info : 30M x 0.32mm x0.2 Signal #2 Info : 30M x 0.32mm x 0.50µm

	Compound	RT#1	RT#2	Resp#1	Resp#2	ng/ml	ng/ml

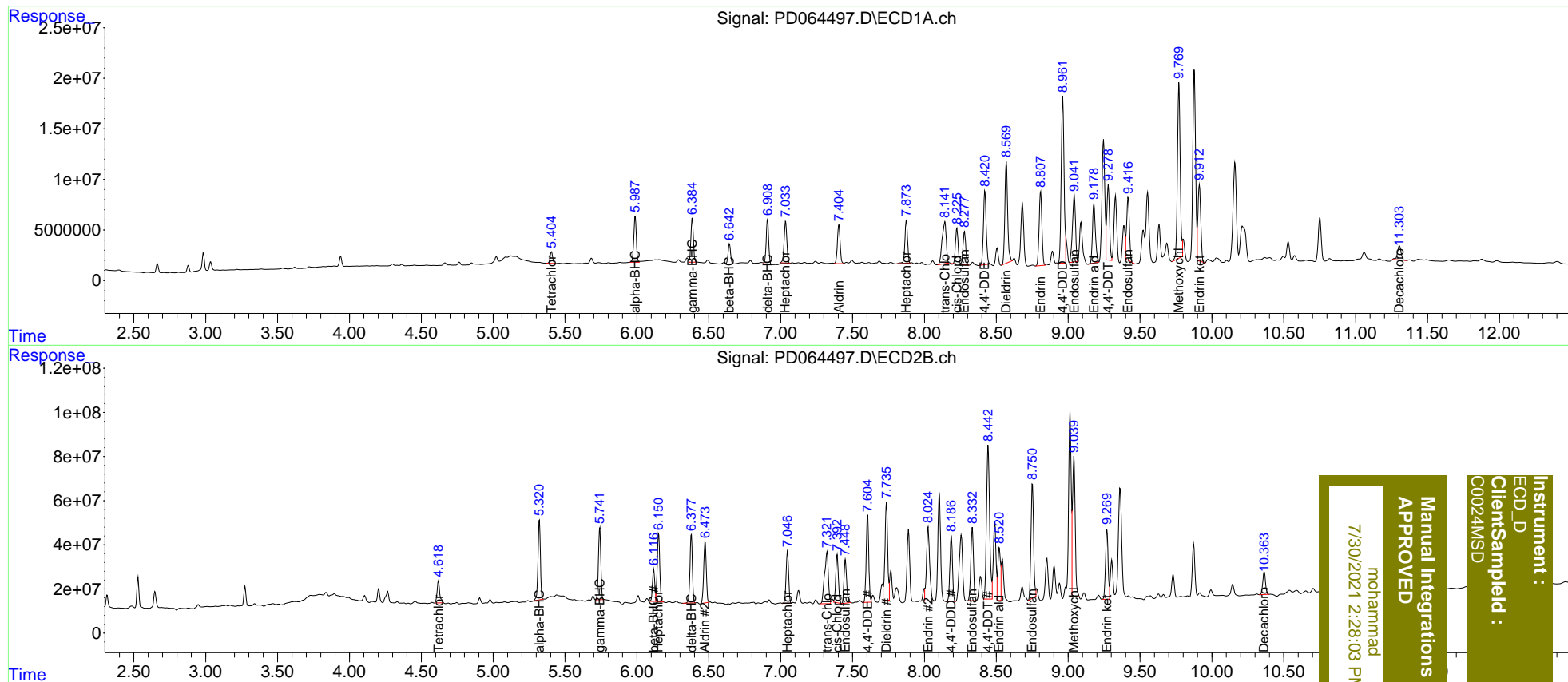
System Monitoring Compounds							
1)	SA Tetrachlo...	5.406	4.620	13956299	129.6E6	11.700	14.187
27)	SA Decachlor...	11.305	10.364	23982946	135.5E6	18.219	22.789 #
Target Compounds							
2)	A alpha-BHC	5.988	5.322	56206108	419.3E6	34.502	34.022
3)	MA gamma-BHC...	6.385	5.741	52229388	380.9E6	33.302	33.404m
4)	MA Heptachlor	7.035	6.150	53895795	377.1E6	32.069	33.260m
5)	MB Aldrin	7.405	6.475	51213958	345.8E6	32.513	32.875
6)	B beta-BHC	6.644	6.116	23949152	177.6E6	30.697	29.278m
7)	B delta-BHC	6.909	6.378	52530954	360.3E6	30.187	33.165
8)	Heptachlo...	7.875	7.048	55217947	289.4E6	32.162	31.265
9)	A Endosulfan I	8.279	7.450	42950975	250.0E6	30.469	32.508
10)	B trans-Chl...	8.141	7.321	80893443	429.3E6	50.480m	47.334m
11)	B cis-Chlor...	8.226	7.393	44994823	273.8E6	28.878	30.780
12)	B 4,4'-DDE	8.421	7.605	98471518	485.2E6	68.321	64.311
13)	MA Dieldrin	8.570	7.735	135.1E6	595.5E6	90.624	74.147m
14)	MA Endrin	8.809	8.024	99186511	509.9E6	77.466	88.757m
15)	B Endosulfa...	9.043	8.334	96203709	427.0E6	74.083	73.979
16)	A 4,4'-DDD	8.961	8.188	228.6E6	374.3E6	186.264m	64.980 #
17)	MA 4,4'-DDT	9.278	8.442	96763582	1037.8E6	74.122m	188.528m#
18)	B Endrin al...	9.179	8.520	82993869	315.8E6	73.257	63.983m
19)	B Endosulfa...	9.418	8.751	83395534	652.2E6	60.511	121.002 #
20)	A Methoxychlor	9.771	9.039	230.5E6	808.7E6	322.183	315.835m
21)	B Endrin ke...	9.913	9.269	102.6E6	392.1E6	67.814	65.368m

(f)=RT Delta > 1/2 Window (#)=Amounts differ by > 25% (m)=manual int.

Data Path : Z:\pestpcbsrv\HPCHEM1\ECD_D\Data\PD072821\
 Data File : PD064497.D
 Signal(s) : Signal #1: ECD1A.ch Signal #2: ECD2B.ch
 Acq On : 29 Jul 2021 06:02
 Operator : AR\AJ
 Sample : M3084-06MSD
 Misc :
 ALS Vial : 18 Sample Multiplier: 1

Integration File signal 1: autoint1.e
 Integration File signal 2: autoint2.e
 Quant Time: Jul 29 06:49:40 2021
 Quant Method : Z:\pestpcbsrv\HPCHEM1\ECD_D\Method\PD072721CLP.M
 Quant Title : GC Extractables
 QLast Update : Wed Jul 28 07:07:14 2021
 Response via : Initial Calibration
 Integrator: ChemStation

Volume Inj. : 1 µl
 Signal #1 Phase : ZB-MR2 Signal #2 Phase: ZB-MR1
 Signal #1 Info : 30M x 0.32mm x0.2 Signal #2 Info : 30M x 0.32mm x 0.50µm



Instrument :
 ECD_D
 Client Sample Id :
 C0024MSD

Manual Integrations
 APPROVED
 mohammed
 7/30/2021 2:28:03 PM