

Data Path : Z:\pestpcbsrv\HPCHEM1\ECD\_D\Data\PD072821\  
 Data File : PD064498.D  
 Signal(s) : Signal #1: ECD1A.ch Signal #2: ECD2B.ch  
 Acq On : 29 Jul 2021 06:18  
 Operator : AR\AJ  
 Sample : M3084-07  
 Misc :  
 ALS Vial : 19 Sample Multiplier: 1

Instrument :  
 ECD\_D  
 ClientSampleId :  
 C0025

Manual Integrations  
 APPROVED

mohammad  
 7/30/2021 2:28:06 PM

Integration File signal 1: autoint1.e  
 Integration File signal 2: autoint2.e  
 Quant Time: Jul 29 06:50:09 2021  
 Quant Method : Z:\pestpcbsrv\HPCHEM1\ECD\_D\Method\PD072721CLP.M  
 Quant Title : GC Extractables  
 QLast Update : Wed Jul 28 07:07:14 2021  
 Response via : Initial Calibration  
 Integrator: ChemStation

Volume Inj. : 1 µl  
 Signal #1 Phase : ZB-MR2 Signal #2 Phase: ZB-MR1  
 Signal #1 Info : 30M x 0.32mm x0.2 Signal #2 Info : 30M x 0.32mm x 0.50µm

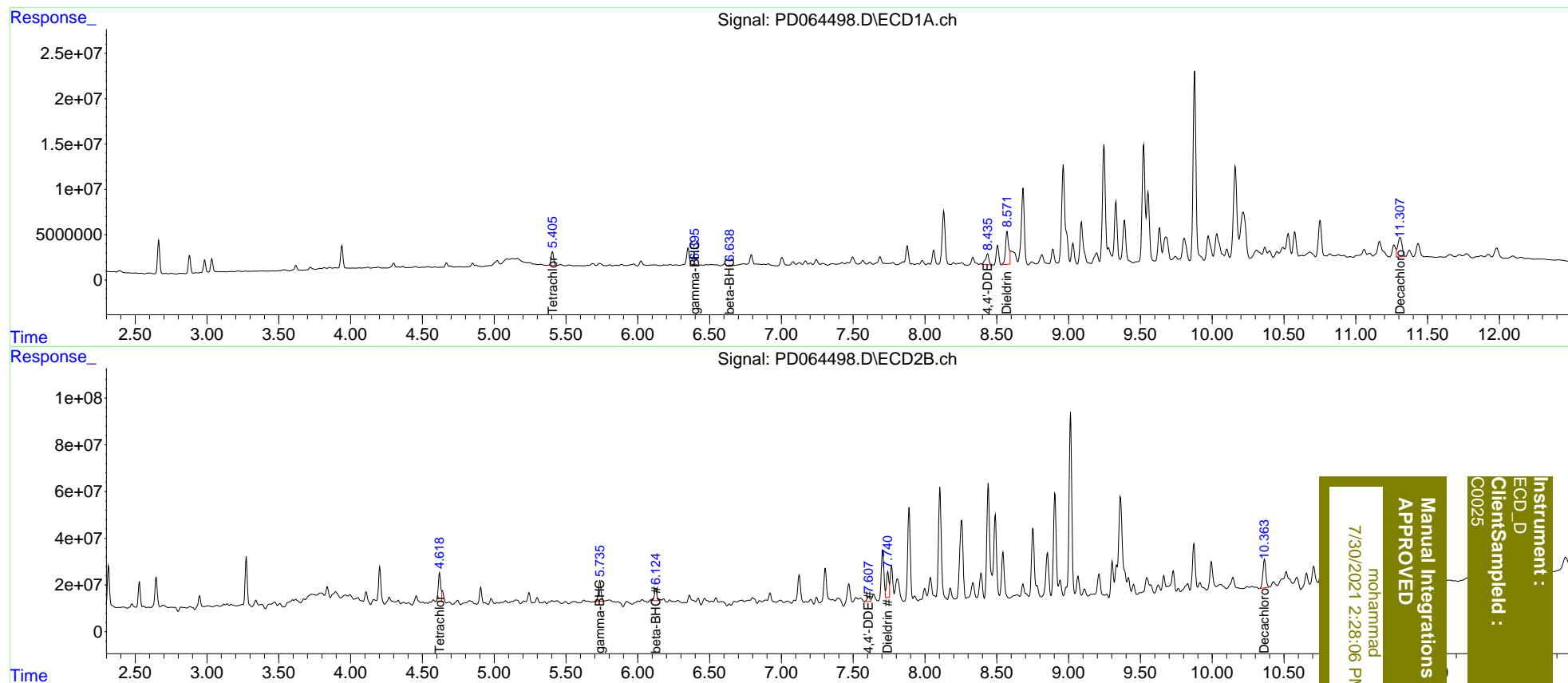
Compound	RT#1	RT#2	Resp#1	Resp#2	ng/ml	ng/ml
-----						
System Monitoring Compounds						
1) SA Tetrachlo...	5.406	4.618	18730814	141.4E6	15.702	15.475m
27) SA Decachlor...	11.307	10.364	44679942	172.2E6	33.941m	28.953
Target Compounds						
3) MA gamma-BHC...	6.396	5.736	2035006	110.0E6	1.298	9.643 #
6) B beta-BHC	6.640	6.124	687843	56047811	0.882	9.238m#
12) B 4,4'-DDE	8.435	7.607	19638383	30746200	13.625m	4.075m#
13) MA Dieldrin	8.571	7.740	58594948	137.2E6	39.292m	17.078m#
-----						

(f)=RT Delta > 1/2 Window (#)=Amounts differ by > 25% (m)=manual int.

Data Path : Z:\pestpcbsrv\HPCHEM1\ECD\_D\Data\PD072821\  
 Data File : PD064498.D  
 Signal(s) : Signal #1: ECD1A.ch Signal #2: ECD2B.ch  
 Acq On : 29 Jul 2021 06:18  
 Operator : AR\AJ  
 Sample : M3084-07  
 Misc :  
 ALS Vial : 19 Sample Multiplier: 1

Integration File signal 1: autoint1.e  
 Integration File signal 2: autoint2.e  
 Quant Time: Jul 29 06:50:09 2021  
 Quant Method : Z:\pestpcbsrv\HPCHEM1\ECD\_D\Method\PD072721CLP.M  
 Quant Title : GC Extractables  
 QLast Update : Wed Jul 28 07:07:14 2021  
 Response via : Initial Calibration  
 Integrator: ChemStation

Volume Inj. : 1 µl  
 Signal #1 Phase : ZB-MR2 Signal #2 Phase: ZB-MR1  
 Signal #1 Info : 30M x 0.32mm x0.2 Signal #2 Info : 30M x 0.32mm x 0.50µm



Instrument : ECD\_D  
 ClientSampleId : C0025  
 mohammad  
 7/30/2021 2:28:06 PM  
 Manual Integrations APPROVED