

Data Path : Z:\pestpcbsrv\HPCHEM1\ECD_D\Data\PD072922\
 Data File : PD071221.D
 Signal(s) : Signal #1: ECD1A.ch Signal #2: ECD2B.ch
 Acq On : 28 Jul 2022 09:58
 Operator : AR\AJ
 Sample : N3882-12
 Misc :
 ALS Vial : 5 Sample Multiplier: 1

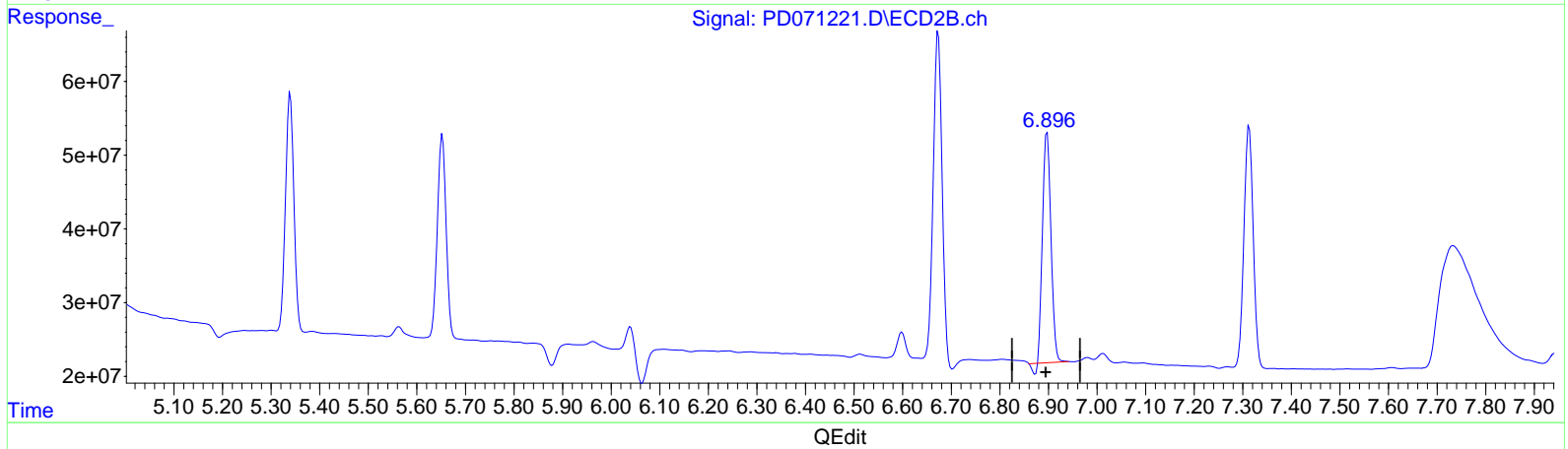
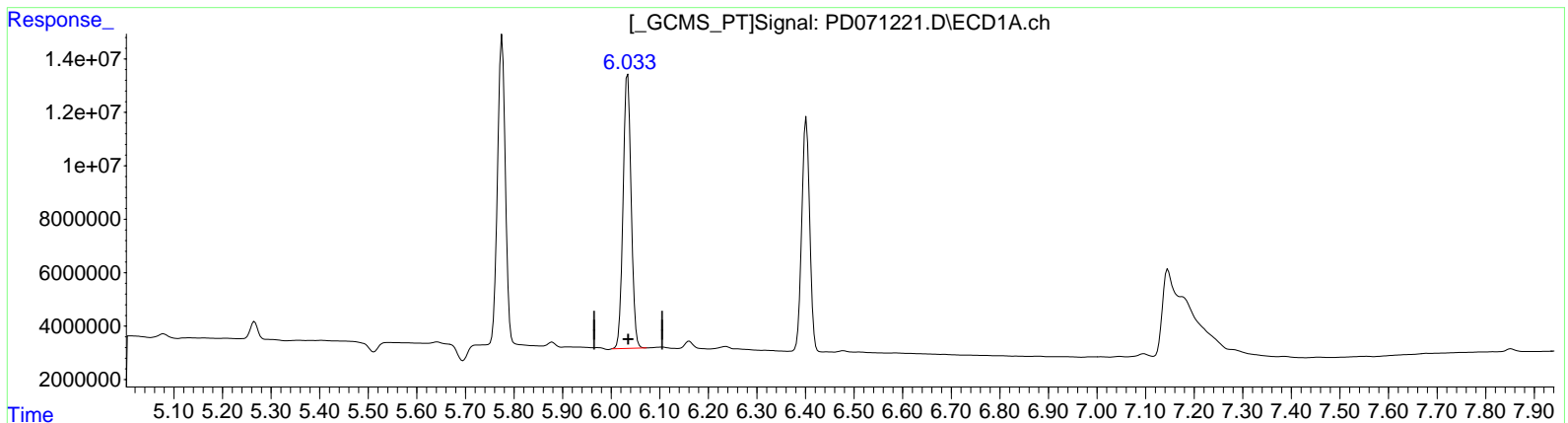
Instrument :
 ECD_D
ClientSampleId :
 PEST-GPC2-BLANK-SPIKE

Manual IntegrationsAPPROVED

Reviewed By :Abdul Mirza 07/29/2022
 Supervised By :Ankita Jodhani 07/29/2022

Integration File signal 1: autoint1.e
 Integration File signal 2: autoint2.e
 Quant Time: Jul 29 02:49:03 2022
 Quant Method : Z:\pestpcbsrv\HPCHEM1\ECD_D\Method\PD071422CLP.M
 Quant Title : GC Extractables
 QLast Update : Thu Jul 14 05:14:58 2022
 Response via : Initial Calibration
 Integrator: ChemStation

Volume Inj. : 1 µl
 Signal #1 Phase : ZB-MR2 Signal #2 Phase: ZB-MR1
 Signal #1 Info : 30M x 0.32mm x0.2 Signal #2 Info : 30M x 0.32mm x 0.50µm



(14) Endrin (MA)
 6.034min 42.896 ng/ml
 response 118918730

(14) Endrin #2 (MA)
 6.897min 35.680 ng/ml
 response 372547802

Data Path : Z:\pestpcbsrv\HPCHEM1\ECD_D\Data\PD072922\
 Data File : PD071221.D
 Signal(s) : Signal #1: ECD1A.ch Signal #2: ECD2B.ch
 Acq On : 28 Jul 2022 09:58
 Operator : AR\AJ
 Sample : N3882-12
 Misc :
 ALS Vial : 5 Sample Multiplier: 1

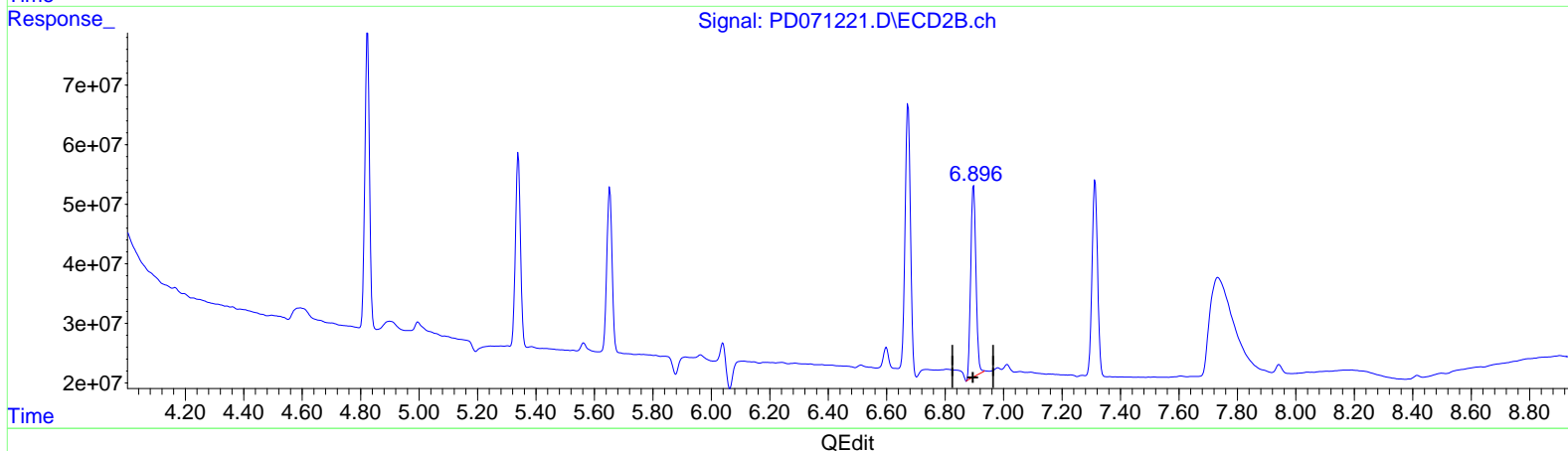
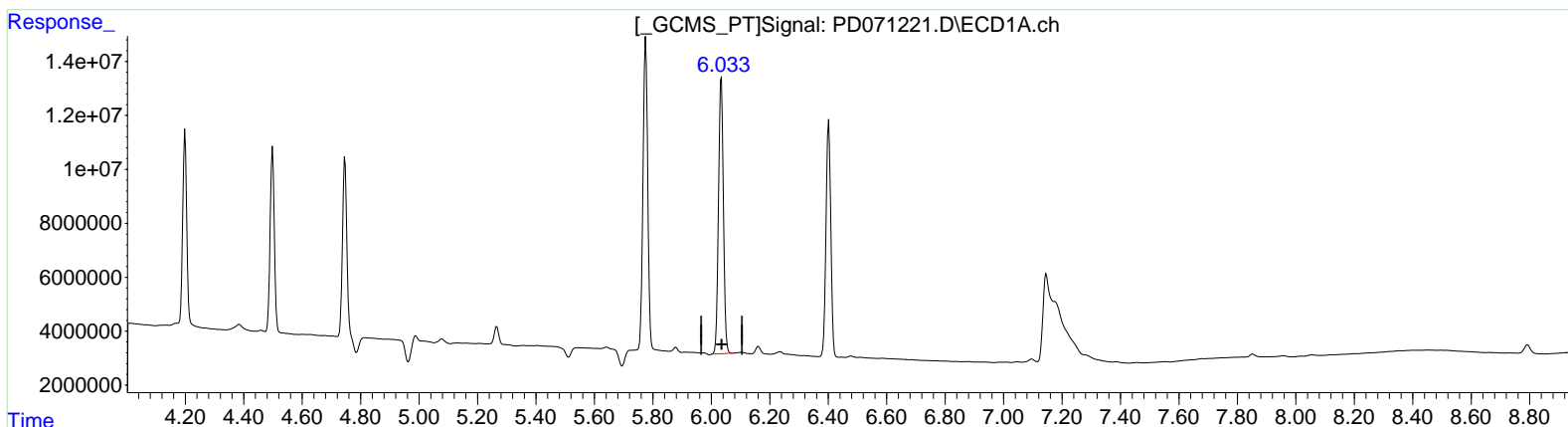
Instrument :
 ECD_D
ClientSampleId :
 PEST-GPC2-BLANK-SPIKE

Manual IntegrationsAPPROVED

Reviewed By :Abdul Mirza 07/29/2022
 Supervised By :Ankita Jodhani 07/29/2022

Integration File signal 1: autoint1.e
 Integration File signal 2: autoint2.e
 Quant Time: Jul 29 02:49:03 2022
 Quant Method : Z:\pestpcbsrv\HPCHEM1\ECD_D\Method\PD071422CLP.M
 Quant Title : GC Extractables
 QLast Update : Thu Jul 14 05:14:58 2022
 Response via : Initial Calibration
 Integrator: ChemStation

Volume Inj. : 1 µl
 Signal #1 Phase : ZB-MR2 Signal #2 Phase: ZB-MR1
 Signal #1 Info : 30M x 0.32mm x0.2 Signal #2 Info : 30M x 0.32mm x 0.50µm



(14) Endrin (MA)
 6.034min 42.896 ng/ml
 response 118918730

(14) Endrin #2 (MA)
 6.896min 38.494 ng/ml m
 response 401931757