

Data Path : Z:\pestpcbsrv\HPCHEM1\ECD\_D\Data\PD073019\  
 Data File : PD054134.D  
 Signal(s) : Signal #1: ECD1A.CH Signal #2: ECD2B.CH  
 Acq On : 30 Jul 2019 16:07  
 Operator : SM\AJ  
 Sample : PB121782BL  
 Misc :  
 ALS Vial : 26 Sample Multiplier: 1

Instrument :  
 ECD\_D  
 ClientSampleId :  
 PBLK82

Integration File signal 1: autoint1.e  
 Integration File signal 2: autoint2.e  
 Quant Time: Jul 31 02:37:57 2019  
 Quant Method : Z:\pestpcbsrv\HPCHEM1\ECD\_D\Method\PD071819CLP.M  
 Quant Title : GC Extractables  
 QLast Update : Fri Jul 19 07:29:30 2019  
 Response via : Initial Calibration  
 Integrator: ChemStation 6890 Scale Mode: Large solvent peaks clipped

Volume Inj. : 1 µl  
 Signal #1 Phase : ZB-MR2 Signal #2 Phase: ZB-MR1  
 Signal #1 Info : 30M x 0.32mm x0.2 Signal #2 Info : 30M x 0.32mm x 0.50µm

Compound	RT#1	RT#2	Resp#1	Resp#2	ng/ml	ng/ml
-----						
System Monitoring Compounds						
1) SA Tetrachlo...	3.312	3.982	13794263	20935587	22.425	22.845
27) SA Decachlor...	8.006	9.024	26639253	36577821	38.042	38.962

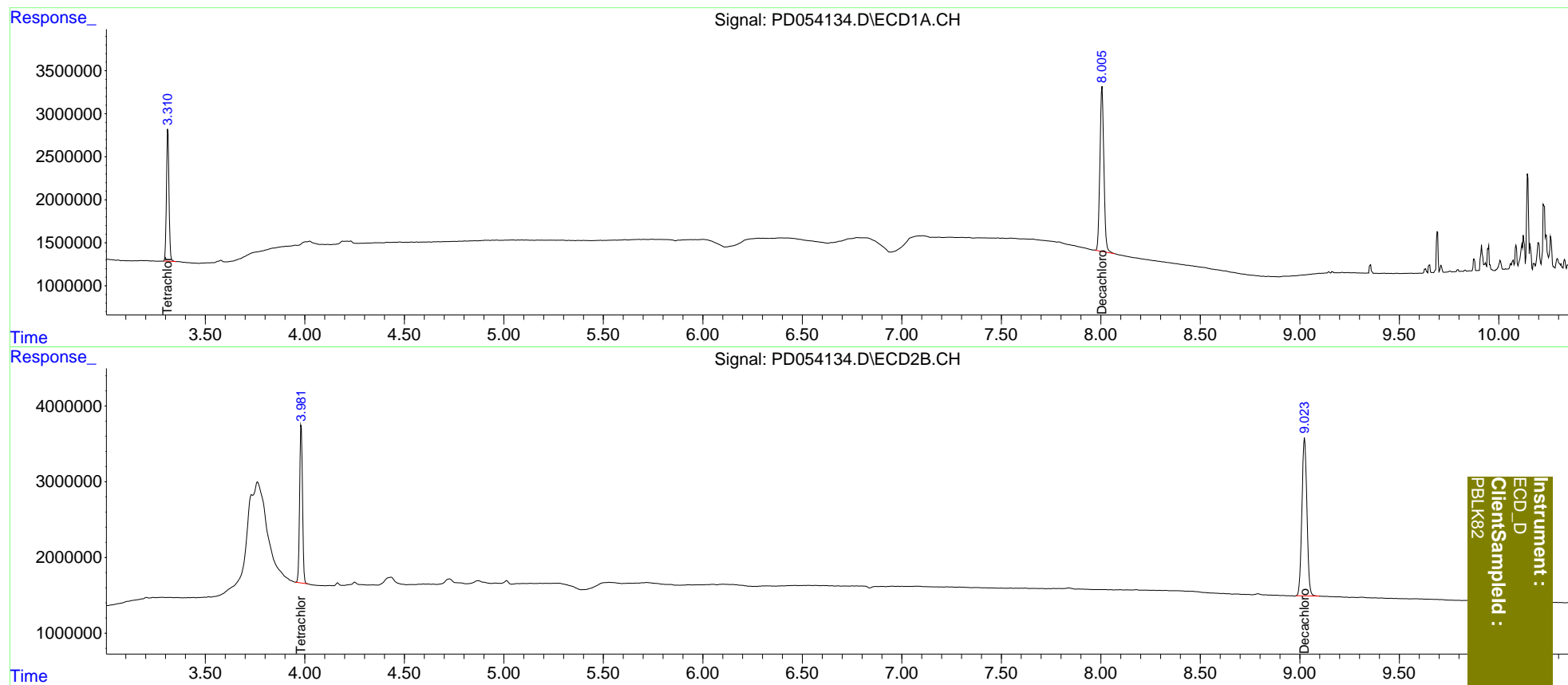
Target Compounds

(f)=RT Delta > 1/2 Window (#)=Amounts differ by > 25% (m)=manual int.

Data Path : Z:\pestpcbsrv\HPCHEM1\ECD\_D\Data\PD073019\  
Data File : PD054134.D  
Signal(s) : Signal #1: ECD1A.CH Signal #2: ECD2B.CH  
Acq On : 30 Jul 2019 16:07  
Operator : SM\AJ  
Sample : PB121782BL  
Misc :  
ALS Vial : 26 Sample Multiplier: 1

Integration File signal 1: autoint1.e  
Integration File signal 2: autoint2.e  
Quant Time: Jul 31 02:37:57 2019  
Quant Method : Z:\pestpcbsrv\HPCHEM1\ECD\_D\Method\PD071819CLP.M  
Quant Title : GC Extractables  
QLast Update : Fri Jul 19 07:29:30 2019  
Response via : Initial Calibration  
Integrator: ChemStation 6890 Scale Mode: Large solvent peaks clipped

Volume Inj. : 1 µl  
Signal #1 Phase : ZB-MR2 Signal #2 Phase: ZB-MR1  
Signal #1 Info : 30M x 0.32mm x 0.2 Signal #2 Info : 30M x 0.32mm x 0.50µm



Instrument :  
ECD\_D  
ClientSampled :  
PBLK82