

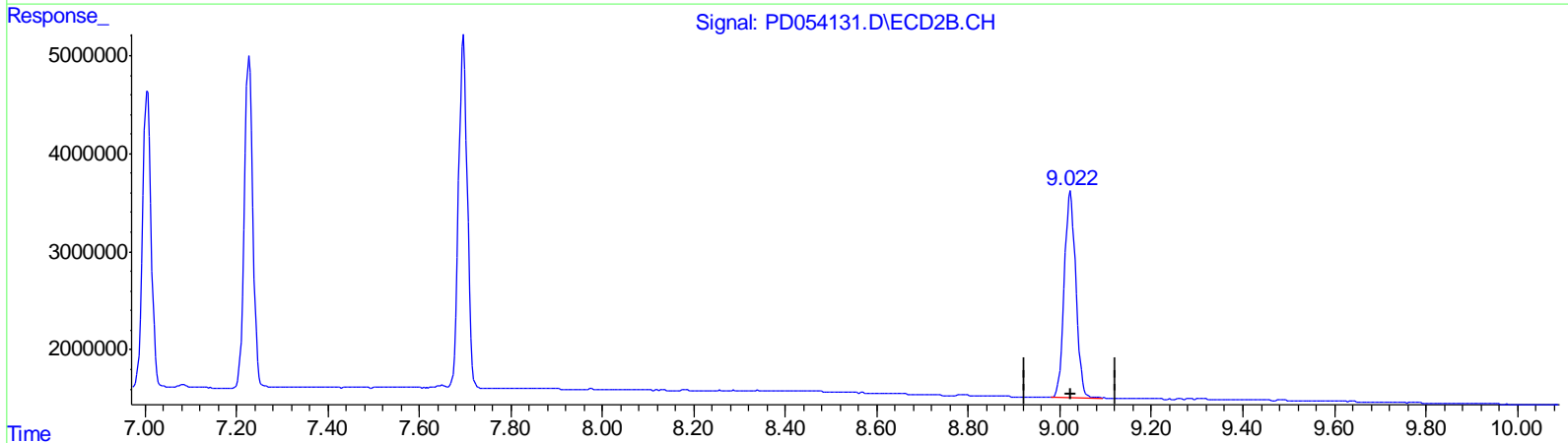
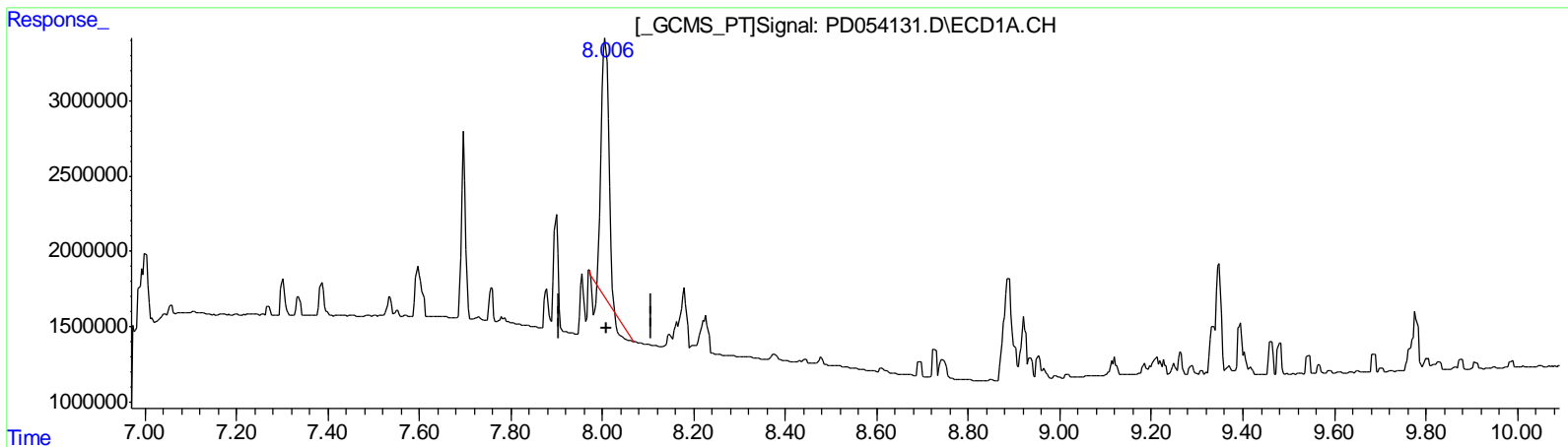
Data Path : Z:\pestpcbsrv\HPCHEM1\ECD\_D\Data\PD073019\  
 Data File : PD054131.D  
 Signal(s) : Signal #1: ECD1A.CH Signal #2: ECD2B.CH  
 Acq On : 30 Jul 2019 15:26  
 Operator : SM\AJ  
 Sample : INDB333  
 Misc :  
 ALS Vial : 25 Sample Multiplier: 1

**Instrument :**  
 ECD\_D  
**LabSampleId :**  
 INDB333

**Manual Integrations**  
**APPROVED**  
 Ankita  
 8/1/2019 10:56:44 AM

Integration File signal 1: autoint1.e  
 Integration File signal 2: autoint2.e  
 Quant Time: Jul 31 02:37:10 2019  
 Quant Method : Z:\pestpcbsrv\HPCHEM1\ECD\_D\Method\PD071819CLP.M  
 Quant Title : GC Extractables  
 QLast Update : Fri Jul 19 07:29:30 2019  
 Response via : Initial Calibration  
 Integrator: ChemStation 6890 Scale Mode: Large solvent peaks clipped

Volume Inj. : 1 µl  
 Signal #1 Phase : ZB-MR2 Signal #2 Phase: ZB-MR1  
 Signal #1 Info : 30M x 0.32mm x0.2 Signal #2 Info : 30M x 0.32mm x 0.50µm



QEdit

(27) Decachlorobiphenyl (SA)

8.007min 24.674 ng/ml

response 17277886

(27) Decachlorobiphenyl #2 (SA)

9.023min 39.234 ng/ml

response 36833140

(+) = Expected Retention Time

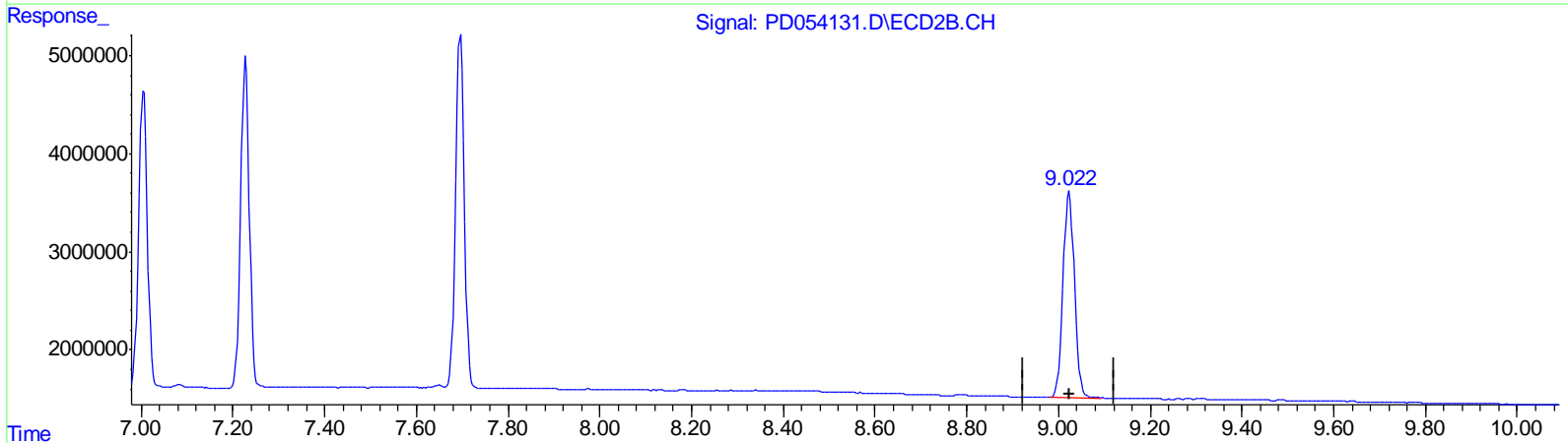
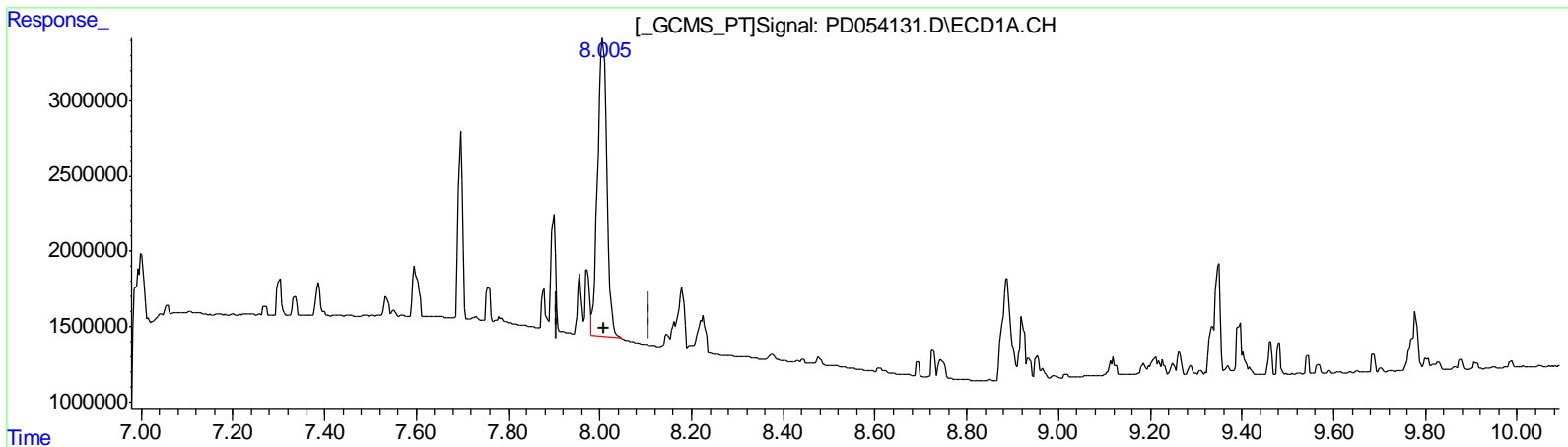
Data Path : Z:\pestpcbsrv\HPCHEM1\ECD\_D\Data\PD073019\  
 Data File : PD054131.D  
 Signal(s) : Signal #1: ECD1A.CH Signal #2: ECD2B.CH  
 Acq On : 30 Jul 2019 15:26  
 Operator : SM\AJ  
 Sample : INDB333  
 Misc :  
 ALS Vial : 25 Sample Multiplier: 1

**Instrument :**  
 ECD\_D  
**LabSampleId :**  
 INDB333

**Manual Integrations**  
**APPROVED**  
 Ankita  
 8/1/2019 10:56:44 AM

Integration File signal 1: autoint1.e  
 Integration File signal 2: autoint2.e  
 Quant Time: Jul 31 02:37:10 2019  
 Quant Method : Z:\pestpcbsrv\HPCHEM1\ECD\_D\Method\PD071819CLP.M  
 Quant Title : GC Extractables  
 QLast Update : Fri Jul 19 07:29:30 2019  
 Response via : Initial Calibration  
 Integrator: ChemStation 6890 Scale Mode: Large solvent peaks clipped

Volume Inj. : 1 µl  
 Signal #1 Phase : ZB-MR2 Signal #2 Phase: ZB-MR1  
 Signal #1 Info : 30M x 0.32mm x0.2 Signal #2 Info : 30M x 0.32mm x 0.50µm



QEdit

(27) Decachlorobiphenyl (SA)

8.005min 39.409 ng/ml m

response 27596457

(27) Decachlorobiphenyl #2 (SA)

9.023min 39.234 ng/ml

response 36833140

(+) = Expected Retention Time

Data Path : Z:\pestpcbsrv\HPCHEM1\ECD\_D\Data\PD073019\  
 Data File : PD054131.D  
 Signal(s) : Signal #1: ECD1A.CH Signal #2: ECD2B.CH  
 Acq On : 30 Jul 2019 15:26  
 Operator : SM\AJ  
 Sample : INDB333  
 Misc :  
 ALS Vial : 25 Sample Multiplier: 1

**Instrument :**  
 ECD\_D  
**LabSampleId :**  
 INDB333

Integration File signal 1: autoint1.e  
 Integration File signal 2: autoint2.e  
 Quant Time: Jul 31 02:37:10 2019  
 Quant Method : Z:\pestpcbsrv\HPCHEM1\ECD\_D\Method\PD071819CLP.M  
 Quant Title : GC Extractables  
 QLast Update : Fri Jul 19 07:29:30 2019  
 Response via : Initial Calibration  
 Integrator: ChemStation 6890 Scale Mode: Large solvent peaks clipped

**Manual Integrations**  
**APPROVED**

Ankita  
 8/1/2019 10:56:44 AM

Volume Inj. : 1 µl  
 Signal #1 Phase : ZB-MR1 Signal #2 Phase: ZB-MR1  
 Signal #1 Info : 30M x 0.32mm x0.2 Signal #2 Info : 30M x 0.32mm x 0.50µm

*Handwritten:*  
 } AJ  
 -----  
 08/01/19

Compound	RT#1	RT#2	Resp#1	Resp#2	ng/ml	ng/ml
-----						
System Monitoring Compounds						
1) SA Tetrachlo...	3.312	3.983	13027613	19704613	21.178	21.501
27) SA Decachlor...	8.005	9.023	27596457	36833140	39.409m	39.234
Target Compounds						
5) MB Aldrin	4.547	5.464	18329000	27326892	21.723	20.907
6) B beta-BHC	4.268	4.819	8607663	13126296	21.748	21.402
7) B delta-BHC	4.464	5.035	18930581	28775688	21.176	21.042
8) B Heptachlo...	4.985	5.847	17239376	26165126	21.216	20.517
10) B trans-Chl...	5.207	6.080	18041045	27262406	20.958	20.227
11) B cis-Chlor...	5.265	6.153	17558645	26693526	21.024	20.179
12) B 4,4'-DDE	5.434	6.308	35281696	52603629	39.984	39.532
15) B Endosulfa...	6.086	6.882	32474371	47738342	40.278	39.473
18) B Endrin al...	6.254	7.005	26368561	39684483	39.374	38.882
19) B Endosulfa...	6.466	7.228	29075128	43951903	38.333	38.605
21) B Endrin ke...	6.952	7.696	31786525	47836358	38.283	38.365

(f)=RT Delta > 1/2 Window (#)=Amounts differ by > 25% (m)=manual int.