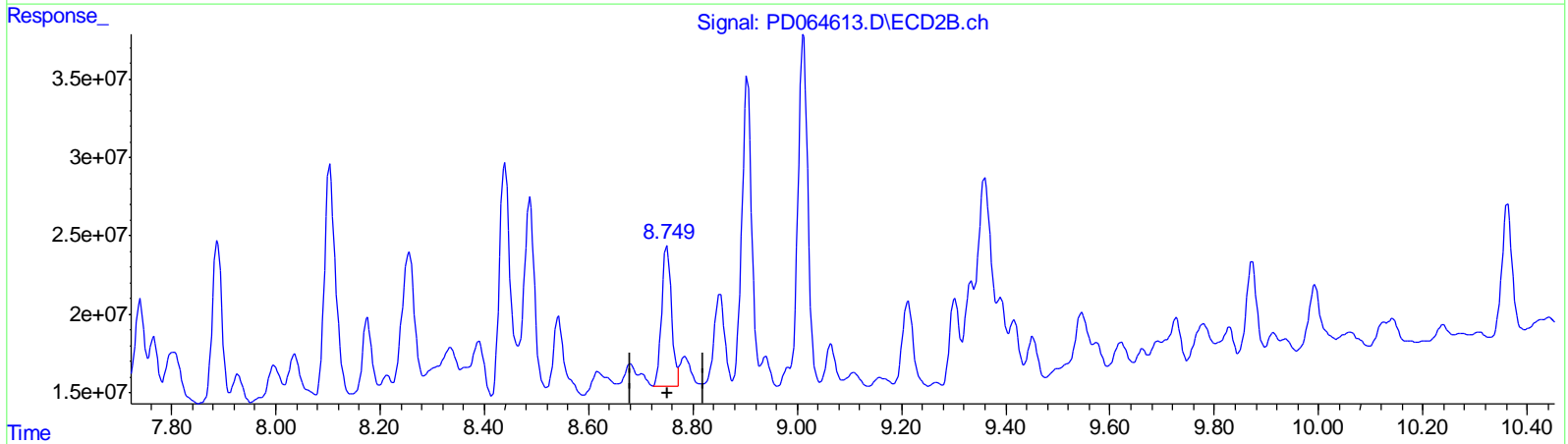
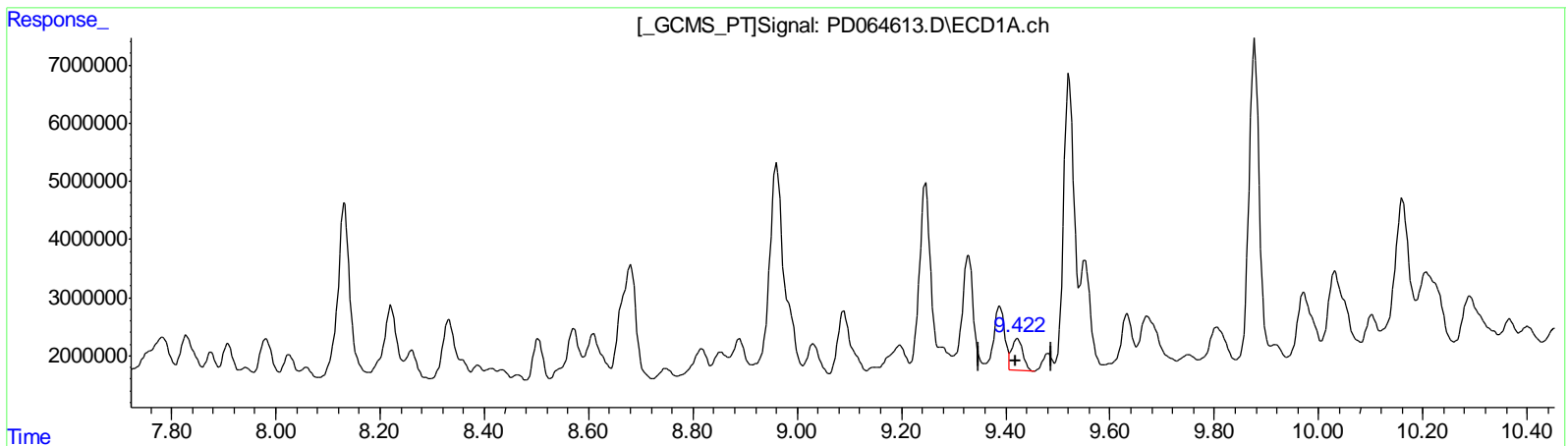


Data Path : Z:\pestpcbsrv\HPCHEM1\ECD_D\Data\PD073021\
 Data File : PD064613.D
 Signal(s) : Signal #1: ECD1A.ch Signal #2: ECD2B.ch
 Acq On : 31 Jul 2021 05:03
 Operator : AR\AJ
 Sample : M3123-02
 Misc :
 ALS Vial : 45 Sample Multiplier: 1

Integration File signal 1: autoint1.e
 Integration File signal 2: autoint2.e
 Quant Time: Aug 02 04:30:19 2021
 Quant Method : Z:\pestpcbsrv\HPCHEM1\ECD_D\Method\PD072721CLP.M
 Quant Title : GC Extractables
 QLast Update : Wed Jul 28 07:07:14 2021
 Response via : Initial Calibration
 Integrator: ChemStation

Volume Inj. : 1 µl
 Signal #1 Phase : ZB-MR2 Signal #2 Phase: ZB-MR1
 Signal #1 Info : 30M x 0.32mm x0.2 Signal #2 Info : 30M x 0.32mm x 0.50µm



QEdit

(19) Endosulfan Sulfate (B)

9.422min 5.751 ng/ml m

response 7926545

(19) Endosulfan Sulfate #2 (B)

8.749min 21.395 ng/ml m

response 115325731

(+) = Expected Retention Time