

Data Path : Z:\pestpcbsrv\HPCHEM1\ECD\_D\Data\PD073021\  
 Data File : PD064570.D  
 Signal(s) : Signal #1: ECD1A.ch Signal #2: ECD2B.ch  
 Acq On : 30 Jul 2021 17:07  
 Operator : AR\AJ  
 Sample : PB137953BS  
 Misc :  
 ALS Vial : 5 Sample Multiplier: 1

**Instrument :**  
 ECD\_D  
**ClientSampled :**  
 PLCS953

**Manual Integrations**  
**APPROVED**  
 mohammad  
 8/2/2021 12:36:32 PM

Integration File signal 1: autoint1.e  
 Integration File signal 2: autoint2.e  
 Quant Time: Jul 31 01:13:17 2021  
 Quant Method : Z:\pestpcbsrv\HPCHEM1\ECD\_D\Method\PD072721CLP.M  
 Quant Title : GC Extractables  
 QLast Update : Wed Jul 28 07:07:14 2021  
 Response via : Initial Calibration  
 Integrator: ChemStation

Volume Inj. : 1 µl  
 Signal #1 Phase : ZB-MR2 Signal #2 Phase: ZB-MR1  
 Signal #1 Info : 30M x 0.32mm x0.2 Signal #2 Info : 30M x 0.32mm x 0.50µm

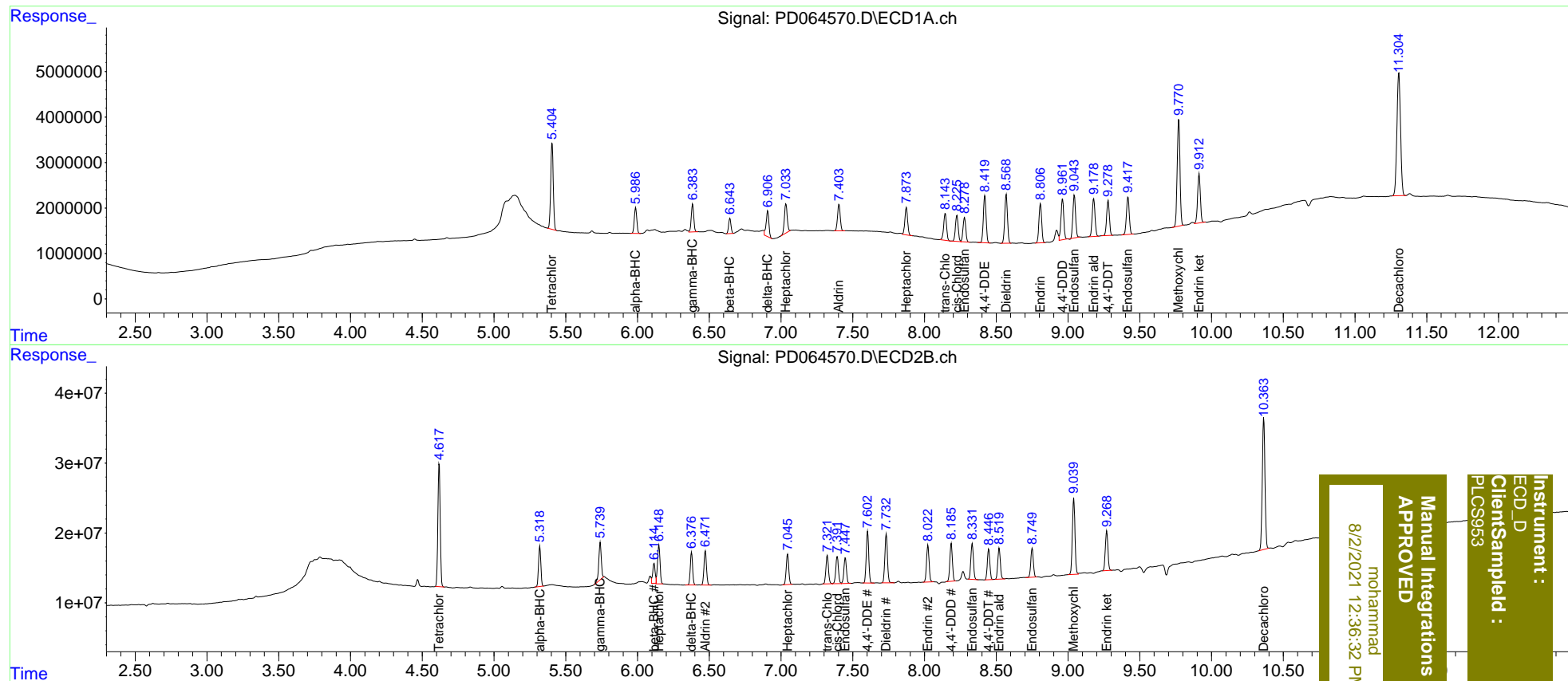
Compound	RT#1	RT#2	Resp#1	Resp#2	ng/ml	ng/ml
System Monitoring Compounds						
1) SA Tetrachlo...	5.405	4.618	23351478	198.9E6	19.576	21.766
27) SA Decachlor...	11.305	10.364	47427794	245.2E6	36.029	41.227
Target Compounds						
2) A alpha-BHC	5.987	5.319	6893900	64321091	4.232	5.219
3) MA gamma-BHC...	6.384	5.740	7395002	66364159	4.715	5.820
4) MA Heptachlor	7.035	6.148	8688379	67525818	5.170	5.956m
5) MB Aldrin	7.404	6.473	7609753	59297843	4.831	5.637
6) B beta-BHC	6.644	6.114	3852551	35155430	4.938	5.795m
7) B delta-BHC	6.906	6.377	7556771	52499897	4.343m	4.833
8) B Heptachlo...	7.874	7.046	7968358	53366949	4.641	5.765
9) A Endosulfan I	8.279	7.448	7104610	45573645	5.040	5.927
10) B trans-Chl...	8.145	7.323	8244030	51018207	5.145	5.625
11) B cis-Chlor...	8.226	7.392	7803810	50377024	5.009	5.663
12) B 4,4'-DDE	8.420	7.604	13687923	88929772	9.497	11.786
13) MA Dieldrin	8.569	7.734	14222683	87663032	9.537	10.915
14) MA Endrin	8.806	8.024	11431927	65582823	8.928m	11.417 #
15) B Endosulfa...	9.044	8.333	12235693	64352060	9.422	11.148
16) A 4,4'-DDD	8.962	8.186	12259994	66582000	9.987	11.560
17) MA 4,4'-DDT	9.280	8.448	10238499	53026466	7.843	9.633
18) B Endrin al...	9.179	8.520	11391250	55115080	10.055	11.168
19) B Endosulfa...	9.418	8.751	11407869	51444338	8.277	9.544
20) A Methoxychlor	9.772	9.040	31666830	138.0E6	44.254	53.912
21) B Endrin ke...	9.914	9.270	14497629	71154211	9.583	11.862

(f)=RT Delta > 1/2 Window (#)=Amounts differ by > 25% (m)=manual int.

Data Path : Z:\pestpcbsrv\HPCHEM1\ECD\_D\Data\PD073021\  
 Data File : PD064570.D  
 Signal(s) : Signal #1: ECD1A.ch Signal #2: ECD2B.ch  
 Acq On : 30 Jul 2021 17:07  
 Operator : AR\AJ  
 Sample : PB137953BS  
 Misc :  
 ALS Vial : 5 Sample Multiplier: 1

Integration File signal 1: autoint1.e  
 Integration File signal 2: autoint2.e  
 Quant Time: Jul 31 01:13:17 2021  
 Quant Method : Z:\pestpcbsrv\HPCHEM1\ECD\_D\Method\PD072721CLP.M  
 Quant Title : GC Extractables  
 QLast Update : Wed Jul 28 07:07:14 2021  
 Response via : Initial Calibration  
 Integrator: ChemStation

Volume Inj. : 1 µl  
 Signal #1 Phase : ZB-MR2 Signal #2 Phase: ZB-MR1  
 Signal #1 Info : 30M x 0.32mm x0.2 Signal #2 Info : 30M x 0.32mm x 0.50µm



Instrument : ECD\_D  
 Client Sample Id : PLC5953  
 mohammad  
 8/2/2021 12:36:32 PM  
**Manual Integrations APPROVED**