

Data Path : Z:\pestpcbsrv\HPCHEM1\ECD_D\Data\PD073021\
 Data File : PD064583.D
 Signal(s) : Signal #1: ECD1A.ch Signal #2: ECD2B.ch
 Acq On : 30 Jul 2021 20:34
 Operator : AR\AJ
 Sample : M3091-15
 Misc :
 ALS Vial : 18 Sample Multiplier: 1

Instrument :
 ECD_D
ClientSampleID :
 C0053

Manual Integrations
APPROVED
 mohammad
 8/2/2021 12:37:05 PM

Integration File signal 1: autoint1.e
 Integration File signal 2: autoint2.e
 Quant Time: Jul 31 05:38:26 2021
 Quant Method : Z:\pestpcbsrv\HPCHEM1\ECD_D\Method\PD072721CLP.M
 Quant Title : GC Extractables
 QLast Update : Wed Jul 28 07:07:14 2021
 Response via : Initial Calibration
 Integrator: ChemStation

Volume Inj. : 1 µl
 Signal #1 Phase : ZB-MR2 Signal #2 Phase: ZB-MR1
 Signal #1 Info : 30M x 0.32mm x0.2 Signal #2 Info : 30M x 0.32mm x 0.50µm

Compound	RT#1	RT#2	Resp#1	Resp#2	ng/ml	ng/ml

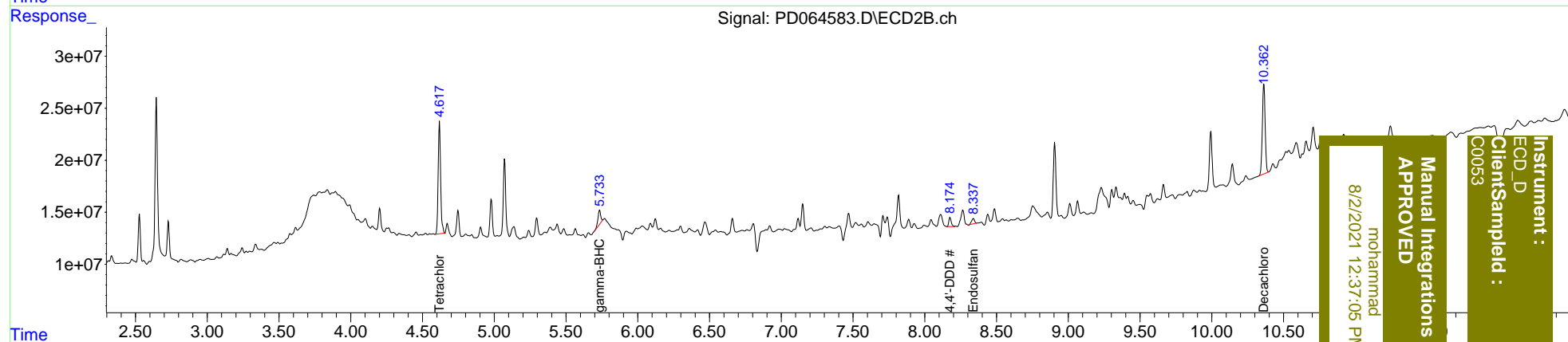
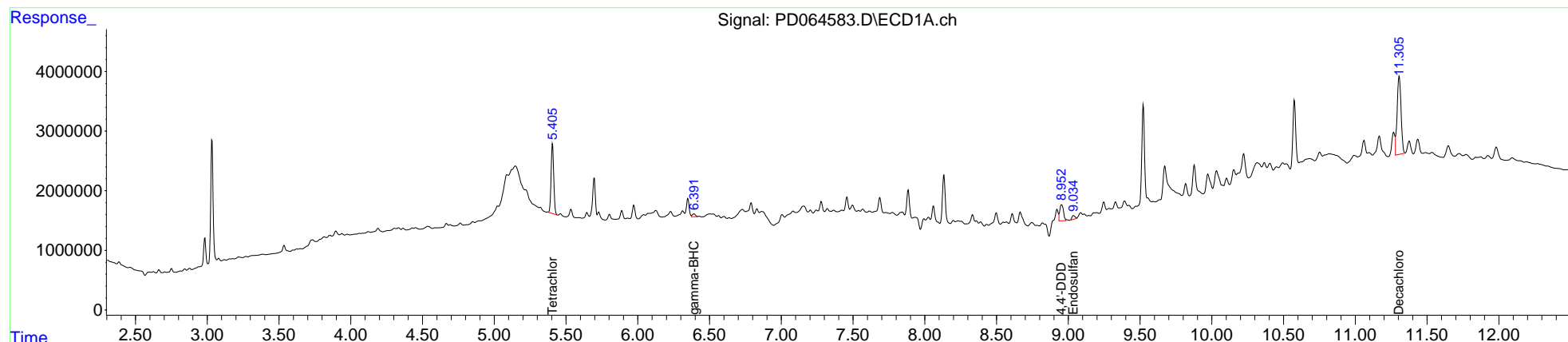
System Monitoring Compounds						
1) SA Tetrachlo...	5.406	4.619	14750234	127.7E6	12.365	13.977
2) SA Decachlor...	11.306	10.363	25131615	117.4E6	19.091	19.735
Target Compounds						
3) MA gamma-BHC...	6.391	5.734	722564	17589814	0.461m	1.542 #
15) B Endosulfa...	9.034	8.339	935263	6898034	0.720m	1.195 #
16) A 4,4'-DDD	8.952	8.176	4762219	10421129	3.879m	1.809 #

(f)=RT Delta > 1/2 Window (#)=Amounts differ by > 25% (m)=manual int.

Data Path : Z:\pestpcbsrv\HPCHEM1\ECD_D\Data\PD073021\
 Data File : PD064583.D
 Signal(s) : Signal #1: ECD1A.ch Signal #2: ECD2B.ch
 Acq On : 30 Jul 2021 20:34
 Operator : AR\AJ
 Sample : M3091-15
 Misc :
 ALS Vial : 18 Sample Multiplier: 1

Integration File signal 1: autoint1.e
 Integration File signal 2: autoint2.e
 Quant Time: Jul 31 05:38:26 2021
 Quant Method : Z:\pestpcbsrv\HPCHEM1\ECD_D\Method\PD072721CLP.M
 Quant Title : GC Extractables
 QLast Update : Wed Jul 28 07:07:14 2021
 Response via : Initial Calibration
 Integrator: ChemStation

Volume Inj. : 1 µl
 Signal #1 Phase : ZB-MR2 Signal #2 Phase: ZB-MR1
 Signal #1 Info : 30M x 0.32mm x 0.2 Signal #2 Info : 30M x 0.32mm x 0.50µm



Instrument :
 ECD_D
 ClientSampleId :
 C0053

Manual Integrations
 APPROVED
 mohammad
 8/2/2021 12:37:05 PM