

Data Path : Z:\pestpcbsrv\HPCHEM1\ECD_D\Data\PD073024\
 Data File : PD084142.D
 Signal(s) : Signal #1: ECD1A.ch Signal #2: ECD2B.ch
 Acq On : 30 Jul 2024 09:15
 Operator : AR\AJ
 Sample : PB162346BS
 Misc :
 ALS Vial : 5 Sample Multiplier: 1

Instrument :
 ECD_D
ClientSampleId :
 PLCS346

Manual Integrations
APPROVED
 Reviewed By :Abdul Mirza 07/31/2024
 Supervised By :Ankita Jodhani 07/31/2024

Integration File signal 1: autoint1.e
 Integration File signal 2: autoint2.e
 Quant Time: Jul 31 04:36:53 2024
 Quant Method : Z:\pestpcbsrv\HPCHEM1\ECD_D\Method\PD072424CLP.M
 Quant Title : GC Extractables
 QLast Update : Thu Jul 25 11:17:53 2024
 Response via : Initial Calibration
 Integrator: ChemStation

Volume Inj. : 1 µl
 Signal #1 Phase : ZB-MR1 Signal #2 Phase: ZB-MR2
 Signal #1 Info : 30M x 0.32mm x0.5 Signal #2 Info : 30M x 0.32mm x 0.25µm

Compound	RT#1	RT#2	Resp#1	Resp#2	ng/ml	ng/ml

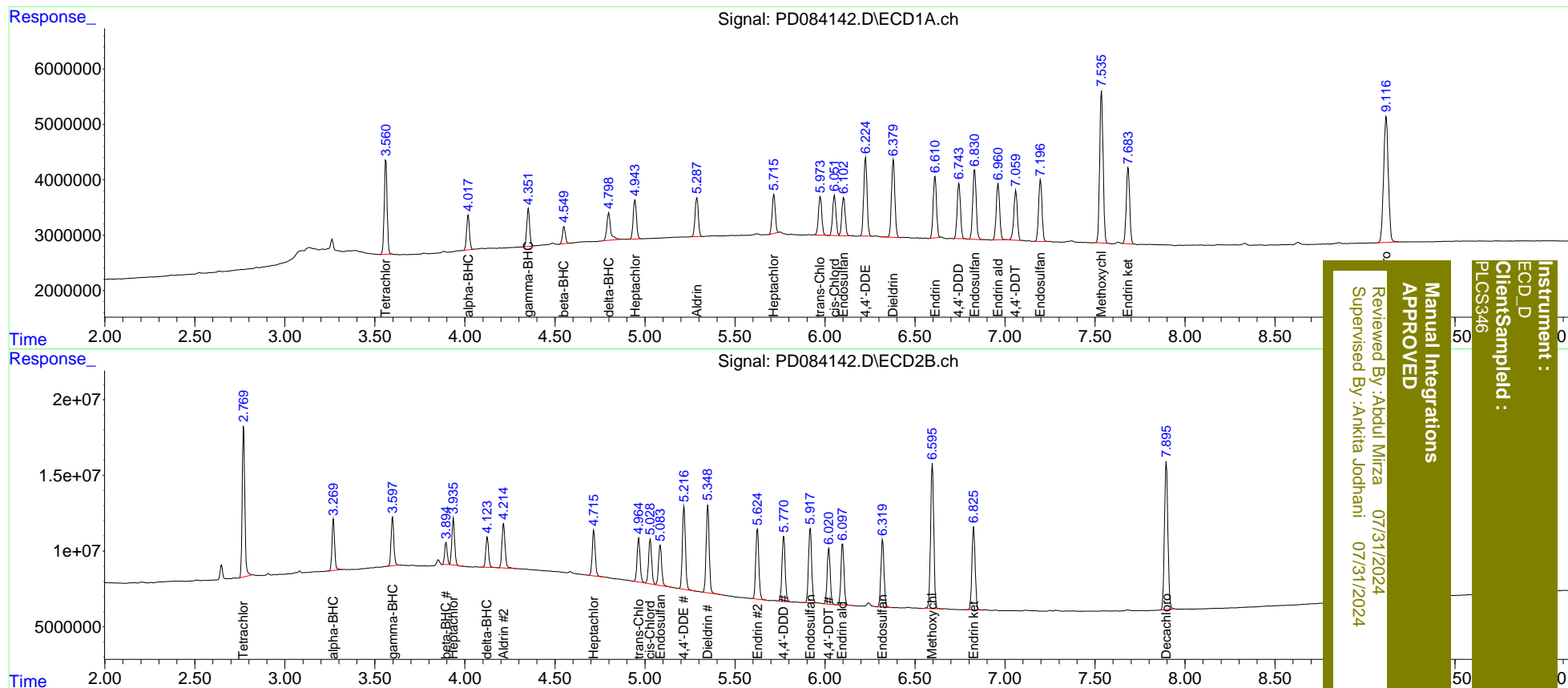
System Monitoring Compounds						
1) SA Tetrachlo...	3.561	2.771	18987164	101.3E6	21.206	19.420
2) SA Decachlor...	9.117	7.896	41565423	130.1E6	21.655	22.576
Target Compounds						
2) A alpha-BHC	4.018	3.270	6949773	34312695	4.177	4.014
3) MA gamma-BHC...	4.353	3.598	7601218	34003612	4.601	4.334
4) MA Heptachlor	4.945	3.936	9079395	33354841	4.943	4.301
5) MB Aldrin	5.289	4.215	8895712	35092629	4.818	4.458
6) B beta-BHC	4.549	3.894	3505369	14435492	4.690m	4.040m
7) B delta-BHC	4.798	4.124	7314588	21691041	3.648m	2.546 #
8) B Heptachlo...	5.717	4.716	8605841	34364158	4.656	4.738
9) A Endosulfan I	6.104	5.085	8935342	32294040	5.171	4.996
10) B trans-Chl...	5.974	4.965	9125887	34393334	5.143	4.856
11) B cis-Chlor...	6.053	5.029	9401772	35383096	5.153	4.894
12) B 4,4'-DDE	6.226	5.217	18118507	64869195	9.852	9.442
13) MA Dieldrin	6.380	5.349	18285531	68370179	9.818	9.648
14) MA Endrin	6.611	5.625	14265920	55620627	8.951	9.121
15) B Endosulfa...	6.831	5.918	16839422	59278796	9.583	9.874
16) A 4,4'-DDD	6.744	5.771	12867050	53057153	9.809	10.140
17) MA 4,4'-DDT	7.060	6.022	12128531	44227436	8.563	8.469
18) B Endrin al...	6.962	6.098	13435872	48397188	10.713	10.937
19) B Endosulfa...	7.197	6.320	14724674	53969073	9.052	9.402
20) A Methoxychlor	7.536	6.596	36639012	119.2E6	43.595	46.218
21) B Endrin ke...	7.684	6.826	18115607	67912999	10.054	10.907

(f)=RT Delta > 1/2 Window (#)=Amounts differ by > 25% (m)=manual int.

Data Path : Z:\pestpcbsrv\HPCHEM1\ECD_D\Data\PD073024\
 Data File : PD084142.D
 Signal(s) : Signal #1: ECD1A.ch Signal #2: ECD2B.ch
 Acq On : 30 Jul 2024 09:15
 Operator : AR\AJ
 Sample : PB162346BS
 Misc :
 ALS Vial : 5 Sample Multiplier: 1

Integration File signal 1: autoint1.e
 Integration File signal 2: autoint2.e
 Quant Time: Jul 31 04:36:53 2024
 Quant Method : Z:\pestpcbsrv\HPCHEM1\ECD_D\Method\PD072424CLP.M
 Quant Title : GC Extractables
 QLast Update : Thu Jul 25 11:17:53 2024
 Response via : Initial Calibration
 Integrator: ChemStation

Volume Inj. : 1 µl
 Signal #1 Phase : ZB-MR1 Signal #2 Phase: ZB-MR2
 Signal #1 Info : 30M x 0.32mm x0.5 Signal #2 Info : 30M x 0.32mm x 0.25µm



Instrument : ECD_D
Client/Sample ID : PLCS346
Manual Integrations APPROVED
 Reviewed By: Aboul Mirza 07/31/2024
 Supervised By: Ankita Jodhani 07/31/2024